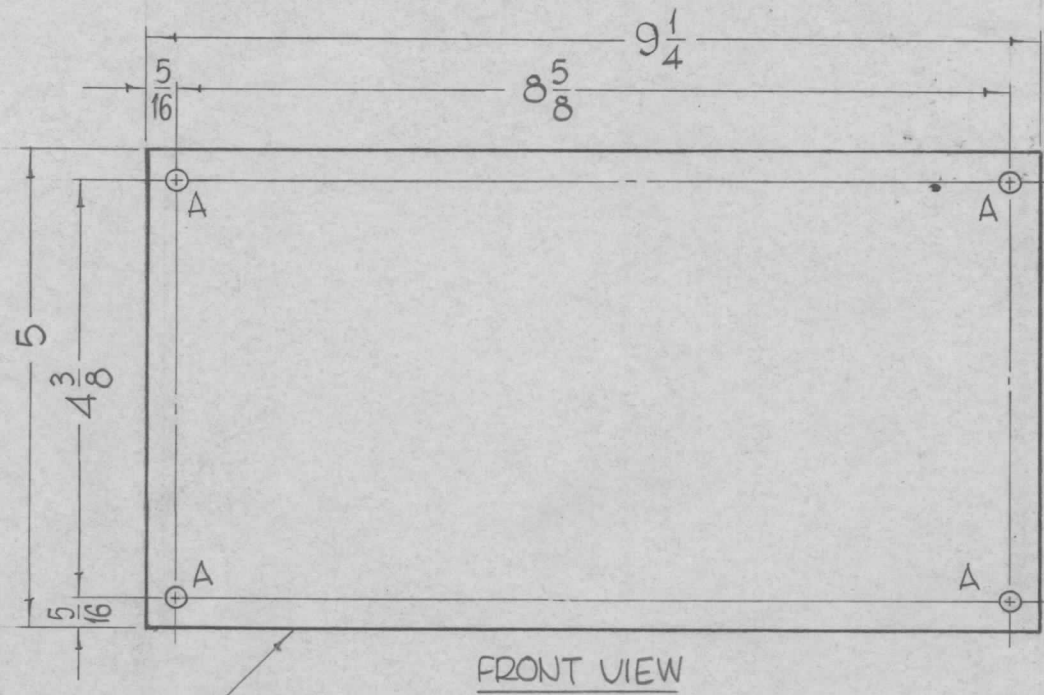


REQ. PER UNIT	USED ON			MS-3054 ○
	MODEL	ASS'Y. NO.	DATE	
1	GPT-200K	AX-444	1-2-64	



HOLE'S REQ.
A-13/64 DIA. 4

FINISH NOTES
BLUE TEXTURE VINYL (FRONT AND EDGES ONLY.)

METAL STAMP TMC
PART NO. 1/8 HIGH
GOTHIC, ON REAR
WITH LATEST REVISION

							REQ. ITEM	PART NO.	F. BUDETTI	DESCRIPTION	SYMBOL	
								16 GAUGE	THE TECHNICAL MATERIEL CORP.			
								STEEL	MAMARONECK, NEW YORK			
									COVER ACCESS			
○	ORIGINAL RELEASE FOR PRODUCTION	5/27/64	○	A.M.								
SYM	DESCRIPTION	DATE	CH. NO.	DRAFTS	CHECKER	ENG. APP.	MATERIAL					
UNLESS OTHERWISE SPECIFIED DIMENSIONS ARE IN INCHES AND INCLUDE CHEMICALLY APPLIED OR PLATED FINISHES		SCALE							John C Biele	aa	RJL	
DECIMALS .X ± .05 .XX ± .01 .XXX ± .005		FRACTIONS ± 1/64 ANGLES ± 0° 30'		CODE A			TYPE & TEMPER	HEAT TREAT. SPEC.	DRAWN	CHECKED	FINAL APPROVAL	
TOLERANCES							SEE NOTES				MS-3054 ○	
							FINISH & SPEC. NO.		ELEC. DES. APP.	MECH. DES. APP.		