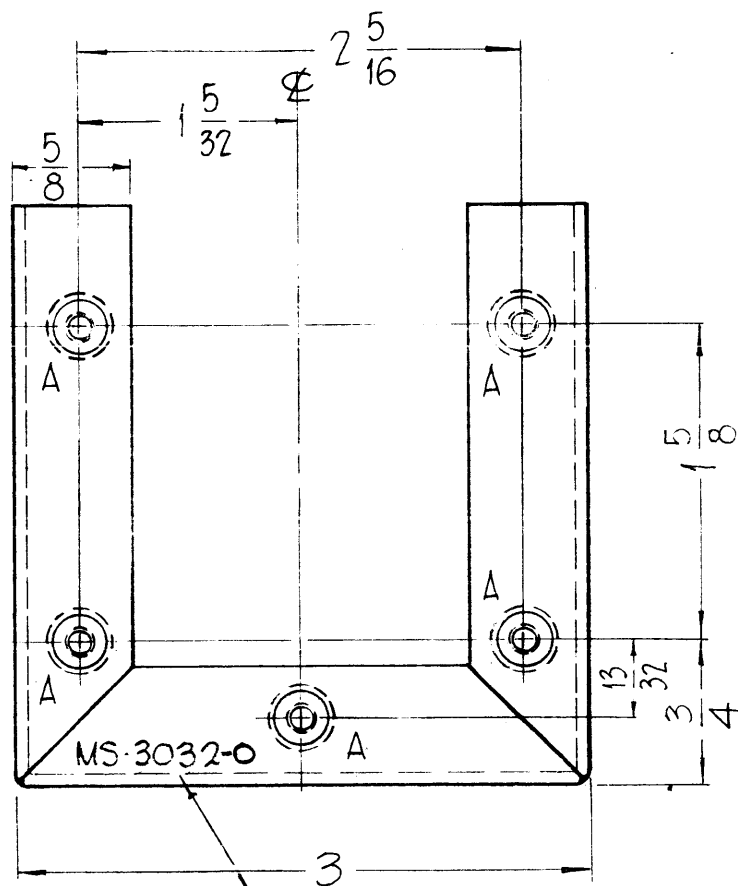
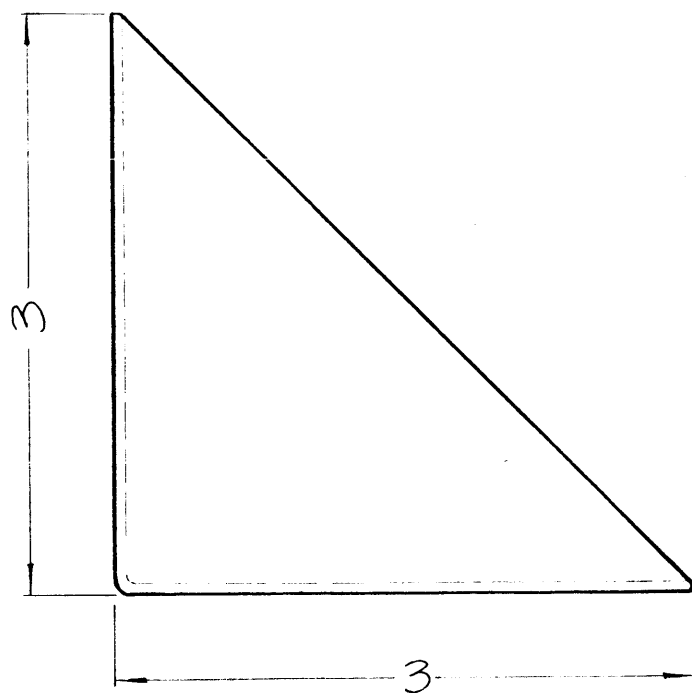


MS-3032-O



METAL STAMP TMC PART NO.
1/8 HIGH GOTHIC.

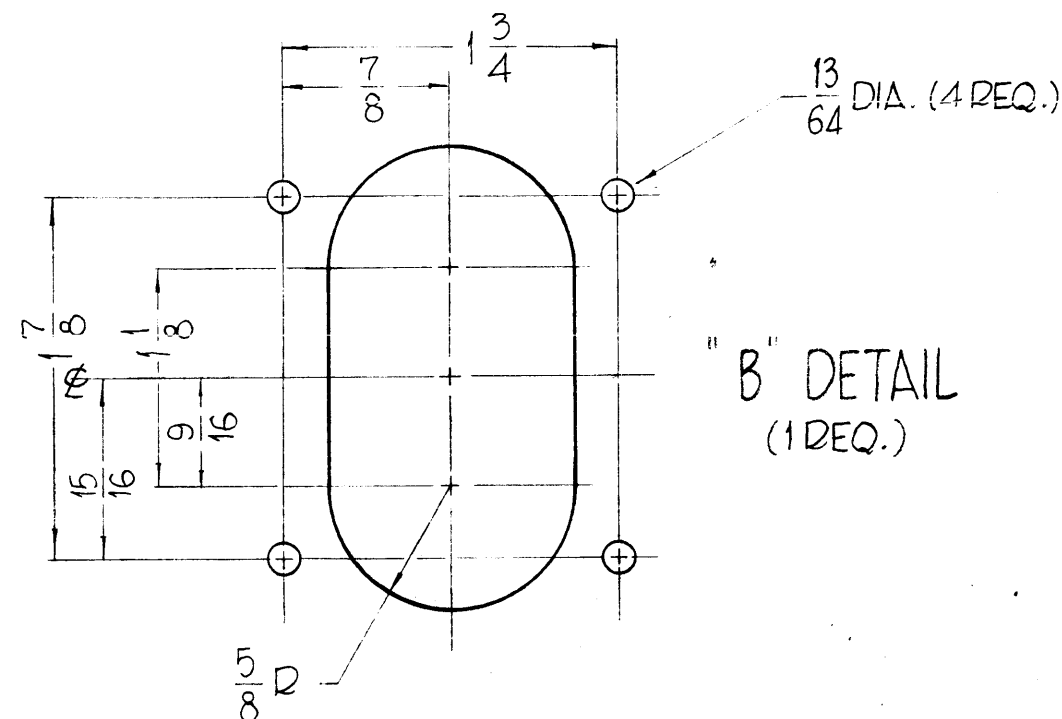


REF - TMC DWG. LD-1155

REVISIONS					
SYM	DESCRIPTION	DATE	E.M.N. NO.	DRAFT	CHKD APPD
0	ORIGINAL RELEASE FOR PRODUCTION	3-264		AM	

HOLES — A- .221 MIN., .224 MAX. DIA'S

5 REQ.



REQ'D.	ITEM	PART NUMBER	DESCRIPTION	SYMBOL
5	1	NT-129-8-32-4	NUT, ROUND, SWAGE TYPE	A

F. BUDETTI

LIST OF MATERIAL

MATERIAL .064 THICK, ALUMINUM, 5052-H-32	TITLE BRACKET, TRANSFORMED MTG.
FINISH 5404, IRIDITE	THE TECHNICAL MATERIEL CORP. MAMARONECK, NEW YORK

USE MATL THICKNESS FOR MAXIMUM RADIUS
ON ALL BENDS.
MOUNT INSERTS AFTER FINISHING.

NOTES

1	GPT-200K	AX-398
Q'TY./UNIT	MODEL USED ON	ASS'Y. NO.
SCALE 1:1	CODE A	

THE CONTENTS OF THIS DRAWING ARE THE EXCLUSIVE PROPERTY
OF THE TECHNICAL MATERIEL CORP. ITS UNAUTHORIZED USE OR
REPRODUCTION IN WHOLE OR IN PART IS STRICTLY FORBIDDEN.

UNLESS OTHERWISE SPECIFIED
DIMENSIONS ARE IN INCHES AND INCLUDE
CHEMICALLY APPLIED OR PLATED FINISHES

DECIMALS .X ± .05 .XX ± .01 .XXX ± .005	TOLERANCES	FRACTIONS ± 1/64 ANGLES ± 0° 30'
--	------------	---

DRAWN John C. Biele	DATE 7/7/62	FINAL APPROVAL KAC	DATE
CHECKED JCB	DATE 2/10/64		
ELECT. DES. JCB	DATE 2/10/64	MS-3032	0
MECH. DES. JCB	DATE 2/10/64	SHEET	REV. LTR.