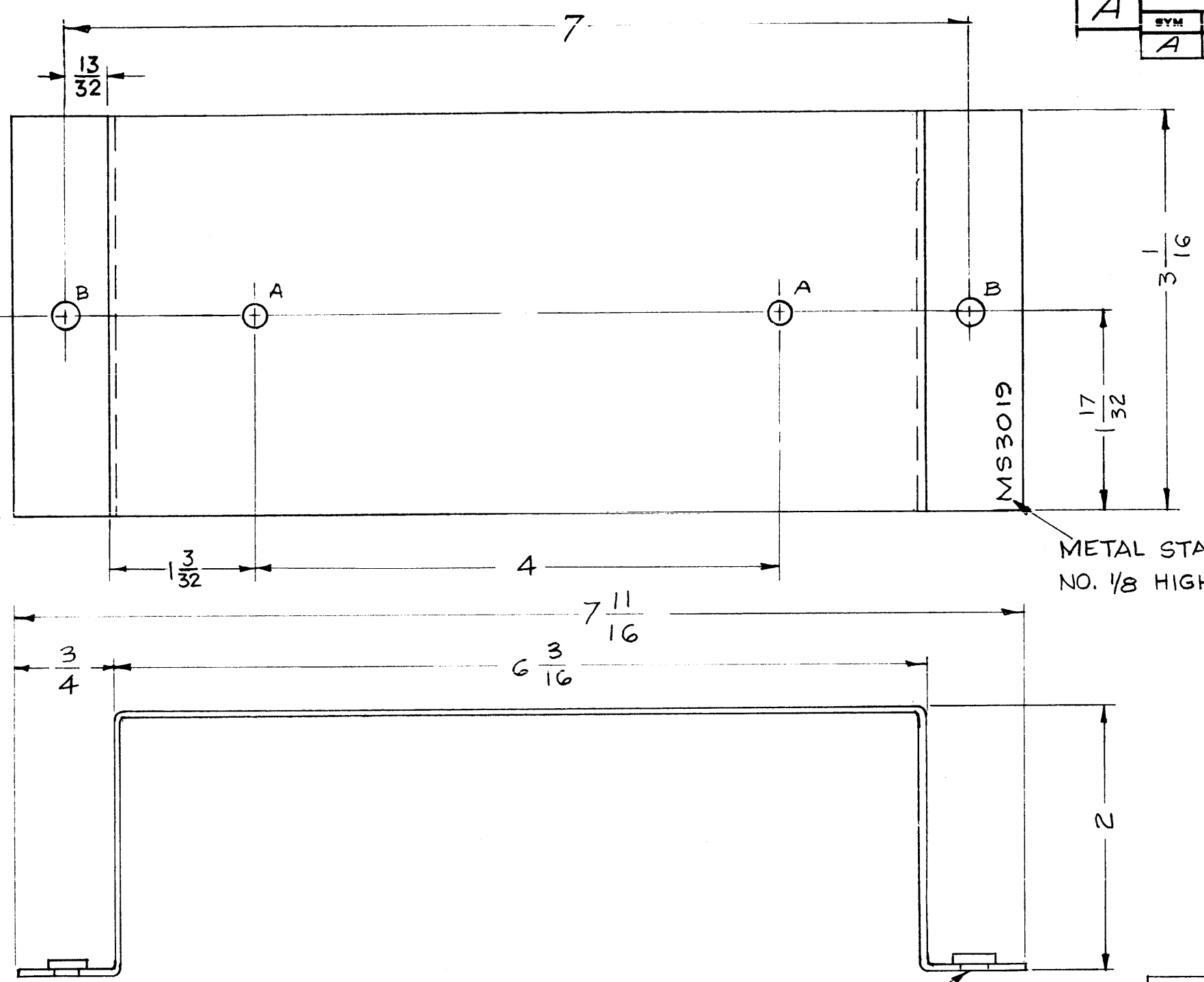


REVISIONS					
SYM	DESCRIPTION	DATE	E.M.N. NO.	DRAFT	CHKD APPD
A	7" DIMENSION WAS 6 7/8	7.13.72	20789	GE	CL. CL.



LEGEND		
HOLE	DESCRIPTION	REQ.
A	3/16 DIA.	2
B	.224-.221 DIA.	2

METAL STAMP TMC PART NO. 1/8 HIGH GOTHIC.

USE MATERIAL THICKNESS FOR MAX. RADIUS ON ALL BENDS UNLESS OTHERWISE SPECIFIED MOUNT INSERTS AFTER FINISHING

MOUNT ITEM 1 IN ALL "B" HOLES

2	1	NT-129-832-4	NUT, ROUND SWAGE TYPE	
REQ'D.	ITEM	PART NUMBER	DESCRIPTION	SYMBOL
STRUCKER LIST OF MATERIAL				
MATERIAL .064 THICK 5052-H32 ALUMINUM			THE TECHNICAL MATERIEL CORP. MAMARONECK, NEW YORK	
FINISH S404-YEL. IRIDITE			TITLE MOUNTING BRACKET	
UNLESS OTHERWISE SPECIFIED DIMENSIONS ARE IN INCHES AND INCLUDE CHEMICALLY APPLIED OR PLATED FINISHES			DRAWN W.S.	DATE 7/26/62
			CHECKED [Signature]	DATE 4-1-63
			ELECT. [Signature]	DATE 4-1-63
			MECH. [Signature]	DATE 4-1-63
DECIMALS .X ± .05 .XX ± .01 .XXX ± .005				FRACTIONS ± 1/64 ANGLES ± 0° 30'
TOLERANCES				FINAL APPROVAL [Signature]
THE CONTENTS OF THIS DRAWING ARE THE EXCLUSIVE PROPERTY OF THE TECHNICAL MATERIEL CORP. ITS UNAUTHORIZED USE OR REPRODUCTION IN WHOLE OR IN PART IS STRICTLY FORBIDDEN.				MS-3019
NOTES				REV. LTR. A