

THE CONTENTS OF THIS DRAWING ARE THE EXCLUSIVE PROPERTY OF THE TECHNICAL MATERIEL CORP. ITS UNAUTHORIZED USE OR REPRODUCTION IN WHOLE OR IN PART IS STRICTLY FORBIDDEN.

REQ. PER UNIT

1

USED ON

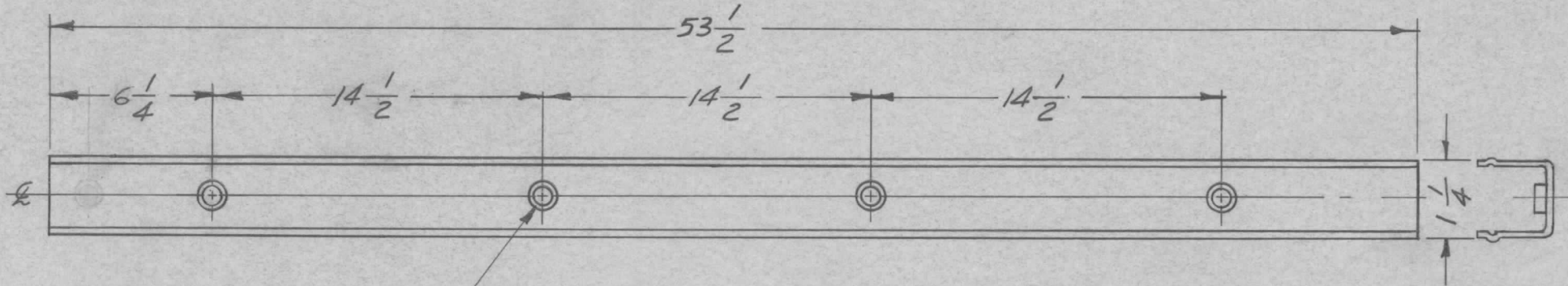
MODEL

RAK-20

ASS'Y. NO.

DATE

MS-2800



A ~ .191-.194 DIA. HOLES (FOR NT-129-632-3) 4 REQ.

UNLESS OTHERWISE SPECIFIED DIMENSIONS ARE IN INCHES AND INCLUDE CHEMICALLY APPLIED OR PLATED FINISHES

DECIMALS	FRACTIONS
.X ± .05	± 1/64
.XX ± .01	ANGLES
.XXX ± .005	± 0° 30'

TOLERANCES

REF. TMC. #PO-160

CUT HERE GUARANTEED 2-66

4	1	NT-129-632-3	NUT ROUND, SWAGE TYPE										
REQ.	ITEM	PART NO.	DESCRIPTION	SYMBOL									
			THE TECHNICAL MATERIEL CORP. MAMARONECK, NEW YORK										
			STRIP, CHANNEL AC										
SYM	DESCRIPTION	DATE	CH. NO.	DRAFTS	CHECKER	ENG. APP.	MATERIAL						
UNLESS OTHERWISE SPECIFIED: DIMENSIONS ARE IN INCHES TOLERANCES ON		SCALE:		TYPE & TEMPER		HEAT TREAT. SPEC.		DRAWN		CHECKED		FINAL APPROVAL	
FRAC. ± 1/64 DEC. ± .005 ANGLES ± 1/2°		MAXIMUM ALLOWABLE TOLERANCES HAVE BEEN DETERMINED AND ANY DEVIATIONS WILL BE CAUSE FOR REJECTION. REMOVE ALL BURRS AND SHARP EDGES						W.S.I.		A. De P.		S.M.	
								MS-2800					
								ELEC. DES. APP.		MECH. DES. APP.			

THE CONTENTS OF THIS DRAWING ARE THE EXCLUSIVE PROPERTY OF THE TECHNICAL MATERIEL CORP. ITS UNAUTHORIZED USE OR REPRODUCTION IN WHOLE OR IN PART IS STRICTLY FORBIDDEN.

REQ. PER UNIT

USED ON

MODEL

ASS'Y. NO.

DATE

2

CLL

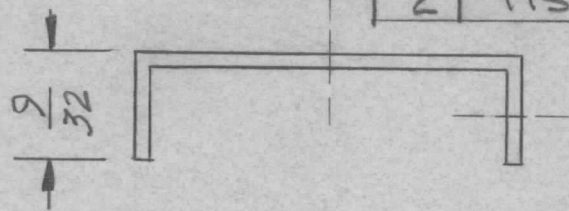
11-29-61

MS-2802

2

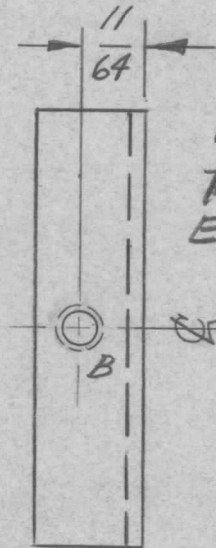
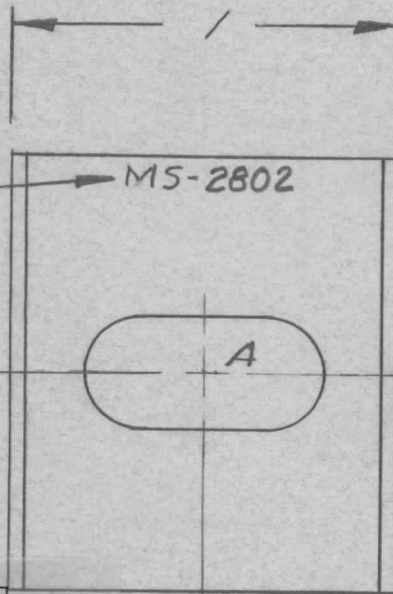
TIS-3

11-29-61



HOLES:
 A- $\frac{5}{8} \times \frac{2}{32}$ SLOT 1 REQ
 B- 5-40 LEFT-HAND THREAD 1 REQ.

METAL STAMP TMC
 PART NO. $\frac{1}{8}$ HIGH
 GOTHIC, AS SHOWN.



NOTE
 REMOVE ALL SHARP
 EDGES & CORNERS

REF: PM-738

UNLESS OTHERWISE SPECIFIED
 DIMENSIONS ARE IN INCHES AND INCLUDE
 CHEMICALLY APPLIED OR PLATED FINISHES

DECIMALS	TOLERANCES	FRACTIONS
.X ± .05		± 1/64
.XX ± .01		ANGLES
.XXX ± .005		± 0° 30'

CUT HERE
 GUARANTEED
 2-66

REQ.	ITEM	PART NO.	DESCRIPTION	SYMBOL					
		.062	THE TECHNICAL MATERIEL CORP.						
		STOCK SIZE	MAMARONECK, NEW YORK						
		C.R. STEEL	HANDLE, SLIDE RELEASE						
		MATERIAL							
SYM	DESCRIPTION	DATE	CH. NO.	DRAFTS	CHECKER	ENG. APP.			
UNLESS OTHERWISE SPECIFIED: DIMENSIONS ARE IN INCHES TOLERANCES ON FRAC. ± 1/64 DEC. ± .005 ANGLES ± 1/2°		SCALE: DO NOT SCALE		TYPE & TEMPER		HEAT TREAT. SPEC.	DRAWN	CHECKED	FINAL APPROVAL
		MAXIMUM ALLOWABLE TOLERANCES HAVE BEEN DETERMINED AND ANY DEVIATIONS WILL BE CAUSE FOR REJECTION. REMOVE ALL BURRS AND SHARP EDGES		5404 YEL. IRIDITE					MS-2802
				FINISH & SPEC. NO.		ELEC. DES. APP.	MECH. DES. APP.		

THE CONTENTS OF THIS DRAWING ARE THE EXCLUSIVE PROPERTY OF THE TECHNICAL MATERIEL CORP. ITS UNAUTHORIZED USE OR REPRODUCTION IN WHOLE OR IN PART IS STRICTLY FORBIDDEN.

REQ. PER UNIT

USED ON

MODEL

ASS'Y. NO.

DATE

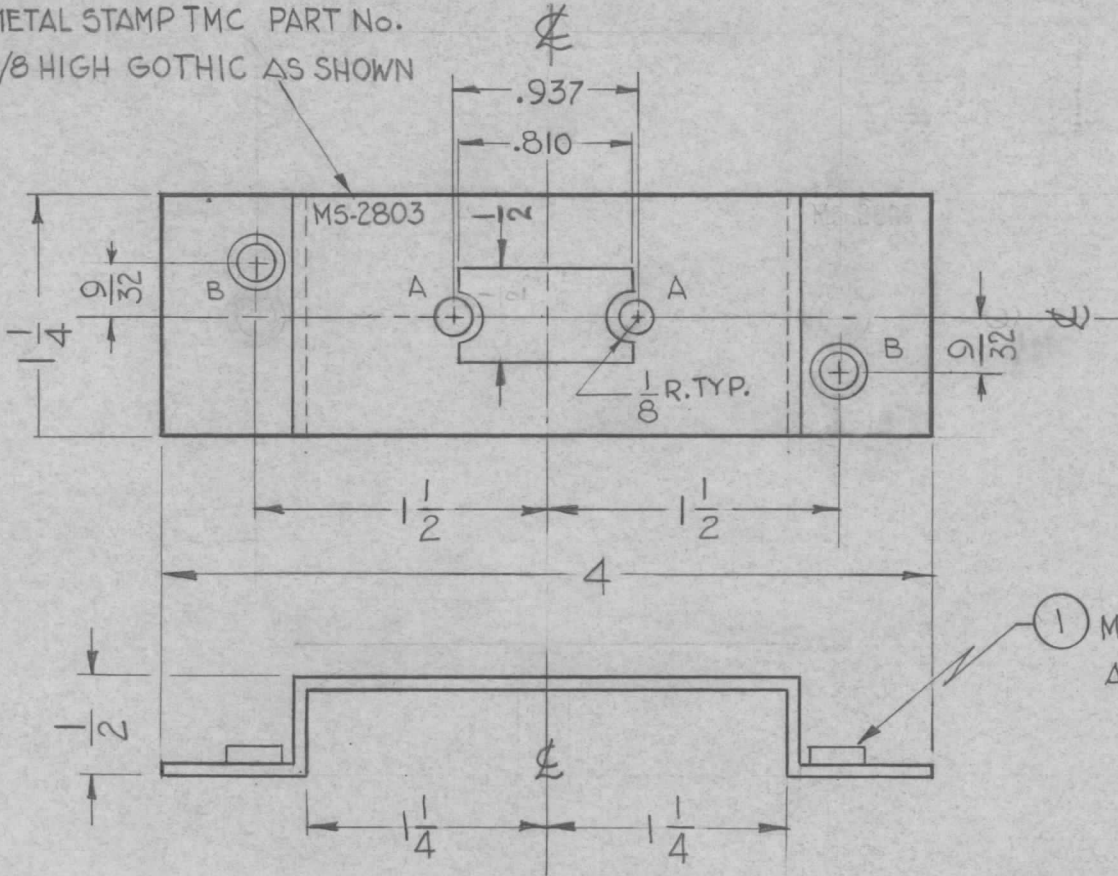
1

TER-25K

1-29-62

MS-2803

METAL STAMP TMC PART No. 1/8 HIGH GOTHIC AS SHOWN



LEGEND		
HOLE	DESCRIPTION	REQ.
A	.171 DIA.	2
B	.191-.194 DIA.	2

USE MATERIAL THICKNESS FOR MAX. RADIUS ON ALL BENDS UNLESS OTHERWISE SPECIFIED

MOUNT INSERTS AFTER FINISHING

1 MOUNT IN ALL "B" HOLES AFTER FINISH AS SHOWN

TOLERANCES	
DECIMALS	FRACTIONS
.X ± .05	± 1/64
.XX ± .01	ANGLES
.XXX ± .005	± 0° 30'

CUT HERE GUARANTEED 2-66

REQ.	ITEM	PART NO.	DESCRIPTION	SYMBOL		
2	1	NT-129-632-4	NUT, ROUND SWAGE TYPE	B		
		.064	THE TECHNICAL MATERIEL CORP.			
		STOCK SIZE	MAMARONECK, NEW YORK			
		ALUMINUM	BRACKET, CONNECTOR SUPPORT			
		MATERIAL				
SYM	DESCRIPTION	DATE	CH. NO.	DRAFTS	CHECKER	ENG. APP.
UNLESS OTHERWISE SPECIFIED: DIMENSIONS ARE IN INCHES TOLERANCES ON		SCALE: DO NOT SCALE				
FRAC. ± 1/64 DEC. ± .005 ANGLES ± 1/2°		MAXIMUM ALLOWABLE TOLERANCES HAVE BEEN DETERMINED AND ANY DEVIATIONS WILL BE CAUSE FOR REJECTION. REMOVE ALL BURRS AND SHARP EDGES				
	5052-H2		G.D.L.	<i>[Signature]</i>	<i>[Signature]</i>	
	TYPE & TEMPER	HEAT TREAT. SPEC.	DRAWN	CHECKED	FINAL APPROVAL	
	3404 YELLOW IRIDITE		LB	<i>[Signature]</i>	MS-2803	
	FINISH & SPEC. NO.		ELEC. DES. APP.	MECH. DES. APP.		

THE CONTENTS OF THIS DRAWING ARE THE EXCLUSIVE PROPERTY OF THE TECHNICAL MATERIEL CORP. ITS UNAUTHORIZED USE OR REPRODUCTION IN WHOLE OR IN PART IS STRICTLY FORBIDDEN.

REQ. PER UNIT

USED ON

MODEL

ASS'Y. NO.

DATE

1

SBS-1

12-27-61

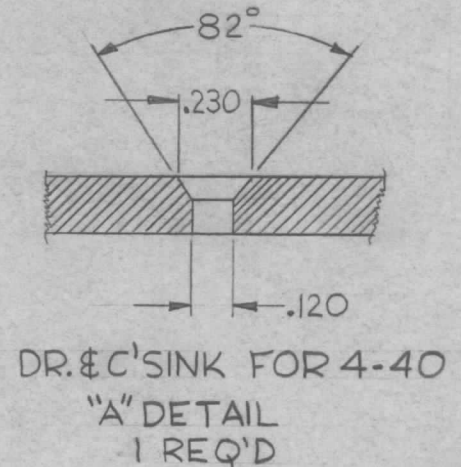
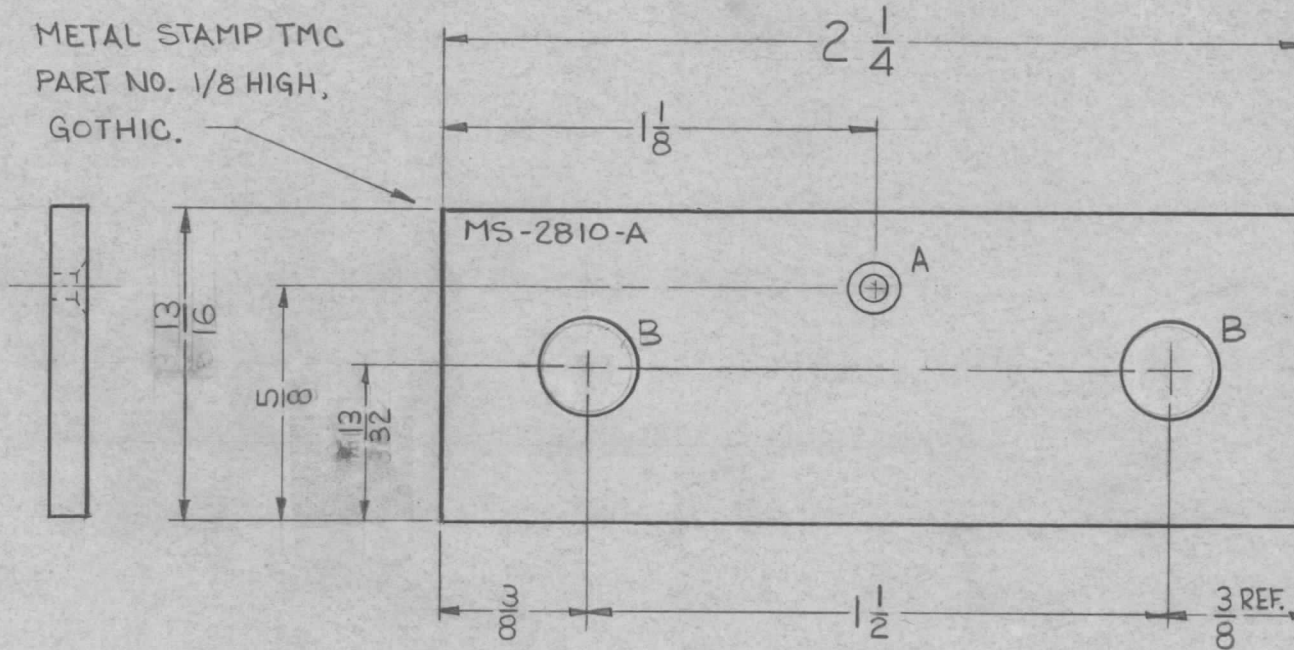
MS-2810

A

LEGEND

HOLE	DESCRIPTION	REQ'D.
A	SEE DETAIL	1
B	1/2" DIA.	2

METAL STAMP TMC
PART NO. 1/8 HIGH,
GOTHIC.



UNLESS OTHERWISE SPECIFIED
DIMENSIONS ARE IN INCHES AND INCLUDE
CHEMICALLY APPLIED OR PLATED FINISHES

DECIMALS	FRACTIONS
.X ± .05	± 1/64
.XX ± .01	ANGLES ± 0° 30'
.XXX ± .005	

TOLERANCES

CUT HERE
GUARANTEED
2-66

REQ.	ITEM	PART NO.	DESCRIPTION	SYMBOL				
		.051	THE TECHNICAL MATERIEL CORP.					
		STOCK SIZE	MAMARONECK, NEW YORK					
A	(2) "B" HOLES WERE 15/32 DIA	10-5-62 7385	ALUMINUM	BRACKET, STANDOFF MOUNTING				
SYM	DESCRIPTION	DATE	CH. NO.	DRAFTS	CHECKER	ENG. APP.		
UNLESS OTHERWISE SPECIFIED: DIMENSIONS ARE IN INCHES TOLERANCES ON FRAC. ± 1/64 DEC. ± .005 ANGLES ± 1/2°		SCALE: 2 X 1 (DO NOT SCALE)		5052-H32				
MAXIMUM ALLOWABLE TOLERANCES HAVE BEEN DETERMINED AND ANY DEVIATIONS WILL BE CAUSE FOR REJECTION. REMOVE ALL BURRS AND SHARP EDGES				TYPE & TEMPER	HEAT TREAT. SPEC.	DRAWN	CHECKED	FINAL APPROVAL
				5404 YELLOW IRIDITE				
				FINISH & SPEC. NO.	ELEC. DES. APP.	MECH. DES. APP.	MS-2810	A

THE CONTENTS OF THIS DRAWING ARE THE EXCLUSIVE PROPERTY OF THE TECHNICAL MATERIEL CORP. ITS UNAUTHORIZED USE OR REPRODUCTION IN WHOLE OR IN PART IS STRICTLY FORBIDDEN.

REQ. PER UNIT

USED ON

MODEL

ASS'Y. NO.

DATE

1

GPT-40K

AX-238

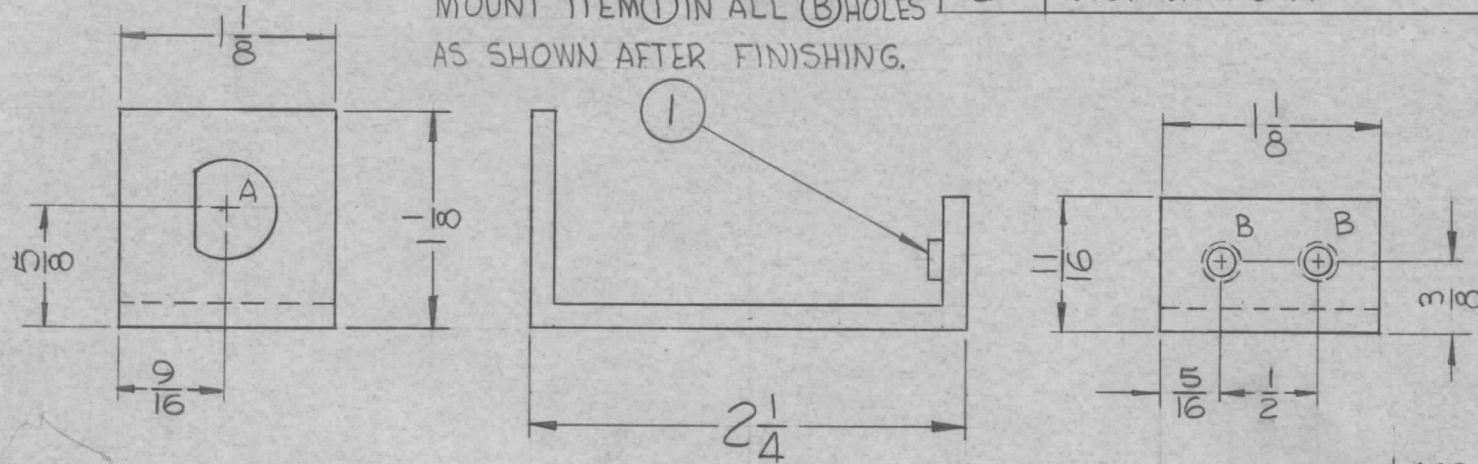
3-5-62

MS-2813

LEGEND

HOLE	DESCRIPTION	REQ'D
A	SEE DETAIL	1
B	.191-.194 DIA.	2

MOUNT ITEM ① IN ALL ② HOLES AS SHOWN AFTER FINISHING.



USE MATERIAL THICKNESS FOR MAX. RADIUS ON ALL BENDS UNLESS OTHERWISE SPECIFIED

MOUNT INSERTS AFTER FINISHING

"A" DETAIL

REF: LD-1042(1)

UNLESS OTHERWISE SPECIFIED DIMENSIONS ARE IN INCHES AND INCLUDE CHEMICALLY APPLIED OR PLATED FINISHES		
DECIMALS	TOLERANCES	FRACTIONS
.X ± .05		± 1/64
.XX ± .01		ANGLES
.XXX ± .005		± 0° 30'

CUT HERE GUARANTEED 2-66

2	1	NT-129-632-4	NUT, ROUND, SWAGE TYPE	B				
REQ. ITEM	PART NO.		F. BUDETTI DESCRIPTION	SYMBOL				
	.081		THE TECHNICAL MATERIEL CORP.					
	STOCK SIZE		MAMARONECK, NEW YORK					
	ALUMINUM		BRACKET, CONNECTOR MTG.					
	MATERIAL							
SYM	DESCRIPTION	DATE	CH. NO.	DRAFTS	CHECKER	ENG. APP.		
UNLESS OTHERWISE SPECIFIED: DIMENSIONS ARE IN INCHES TOLERANCES ON		SCALE:		5052-H32	GG	HW	FB	
FRAC. ± 1/64 DEC. ± .005 ANGLES ± 1/2°		MAXIMUM ALLOWABLE TOLERANCES HAVE BEEN DETERMINED AND ANY DEVIATIONS WILL BE CAUSE FOR REJECTION. REMOVE ALL BURRS AND SHARP EDGES		TYPE & TEMPER	HEAT TREAT. SPEC.	DRAWN	CHECKED	FINAL APPROVAL
				YELLOW		BB	AA	MS-2813
				FINISH & SPEC. NO.	ELEC. DES. APP.	MECH. DES. APP.		

THE CONTENTS OF THIS DRAWING ARE THE EXCLUSIVE PROPERTY OF THE TECHNICAL MATERIEL CORP. ITS UNAUTHORIZED USE OR REPRODUCTION IN WHOLE OR IN PART IS STRICTLY FORBIDDEN.

REQ. PER UNIT

MODEL

USED ON

ASS'Y. NO.

DATE

1

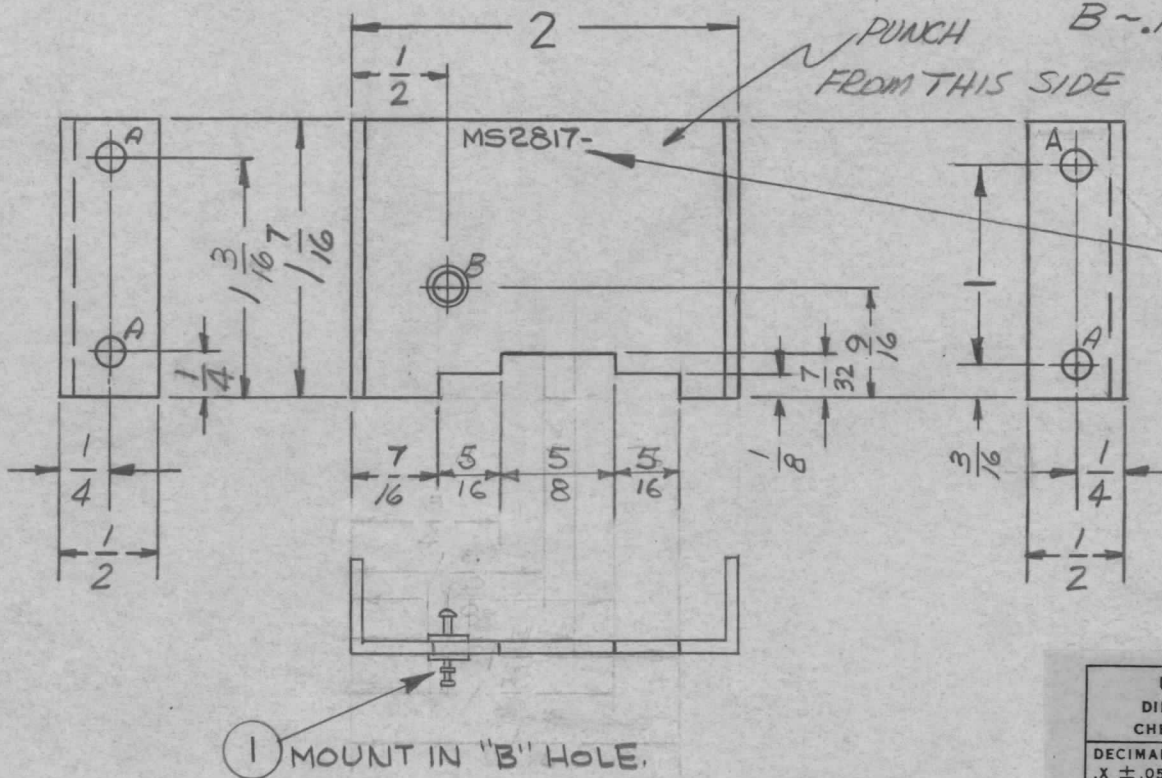
HF8-11N

7-24-62

MS-2817

B

HOLES ~
A ~ 9/64 DIA. 4 REQ'D.
B ~ .136 DIA. 1 REQ'D.
C SINK 60°



UNLESS OTHERWISE SPECIFIED
DIMENSIONS ARE IN INCHES AND INCLUDE
CHEMICALLY APPLIED OR PLATED FINISHES

DECIMALS	TOLERANCES	FRACTIONS
.X ± .05		± 1/64
.XX ± .01		ANGLES
.XXX ± .005		± 0° 30'

CUT HERE
GUARANTEED
2-66

						1	1	TE193B759	TERMINAL, STUD, INSULATED	B	
						REQ.	ITEM	PART NO.	GELLMAN DESCRIPTION	SYMBOL	
						.051 THK			THE TECHNICAL MATERIEL CORP.		
						ALUMINUM			MAMARONECK, NEW YORK		
						MATERIAL			BRACKET, MOUNTING, RF SHIELD, #2		
						5052-H32			AB	file	BP
						TYPE & TEMPER		HEAT TREAT. SPEC.	DRAWN	CHECKED	FINAL APPROVAL
						5404-YEL. IRIDITE			WCF		MS-2817 B
						FINISH & SPEC. NO.		ELEC. DES. APP.	MECH. DES. APP.		

UNLESS OTHERWISE SPECIFIED:
DIMENSIONS ARE IN INCHES
TOLERANCES ON
FRAC. ± 1/64 DEC. ± .005 ANGLES ± 1/2°

SCALE:
MAXIMUM ALLOWABLE TOLERANCES HAVE BEEN DETERMINED AND ANY DEVIATIONS WILL BE CAUSE FOR REJECTION.
REMOVE ALL BURRS AND SHARP EDGES

THE CONTENTS OF THIS DRAWING ARE THE EXCLUSIVE PROPERTY OF THE TECHNICAL MATERIEL CORP. ITS UNAUTHORIZED USE OR REPRODUCTION IN WHOLE OR IN PART IS STRICTLY FORBIDDEN.

REQ. PER UNIT

USED ON

MODEL

ASS'Y. NO.

DATE

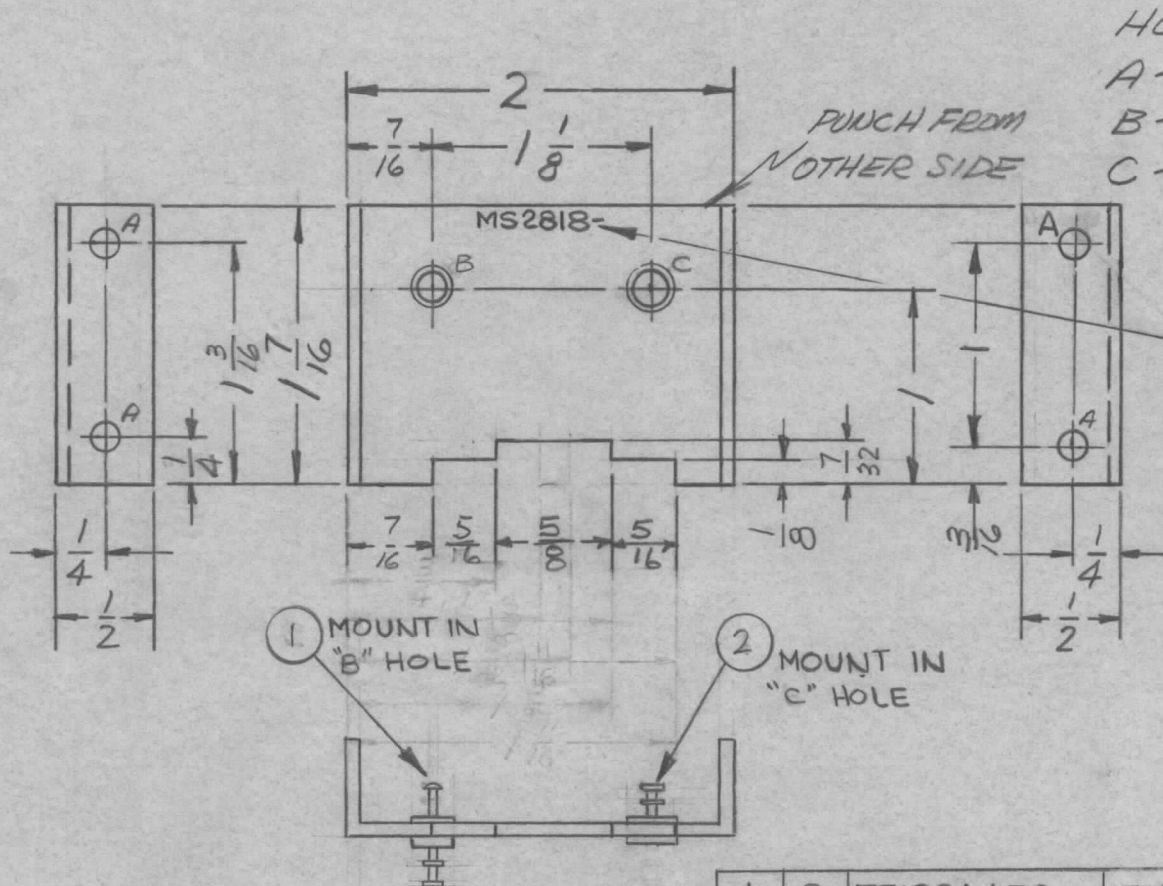
1

HFR-11/N

7-24-62

MS 2818

C



HOLES~

A ~ 9/64 DIA. 4 REQ'D.

B ~ .172 DIA, C'SINK 60° 1 REQ'D.

C ~ .136 DIA, C'SINK 60° 1 REQ'D

METAL STAMP
TMC PART NO.
1/8 HIGH GOTHIC, WITH
LATEST REVISION LETTER

1	2	TE192A4R9	TERMINAL, STUD, INSULATED	B
1	1	TE193B7S9	TERMINAL, STUD, INSULATED	C

REQ.	ITEM	PART NO.	DESCRIPTION	SYMBOL		
		.051 THK	THE TECHNICAL MATERIEL CORP. MAMARONECK, NEW YORK BRACKET, MOUNTING, RF SHIELD, #3			
		STOCK SIZE				
		ALUMINUM				
		MATERIAL				
		5052-H32	AB	Jude	BP	
		TYPE & TEMPER	HEAT TREAT. SPEC.	DRAWN	CHECKED	FINAL APPROVAL
		5404-YEL. IRIDITE				
		FINISH & SPEC. NO.	ELEC. DES. APP.	MECH. DES. APP.		

SYM	DESCRIPTION	DATE	CH. NO.	DRAFTS	CHECKER	ENG. APP.
C	IT 1 & 2 REVERSED	11.28.66	17320	WHD	JCF	J
B	ONE "A" HOLE ADDED	11.5.64	12869	WOB	@	J
A	ITEMS (1) & (2) ADDED "B" HOLE WAS .172 DIA, "C" WAS .136 DIA	8-7-62	12046	WHD	NP.	J

UNLESS OTHERWISE SPECIFIED:
DIMENSIONS ARE IN INCHES
TOLERANCES ON
FRAC. ± 1/64 DEC. ± .005 ANGLES ± 1/2°

SCALE:
MAXIMUM ALLOWABLE TOLERANCES HAVE BEEN DETERMINED AND ANY DEVIATIONS WILL BE CAUSE FOR REJECTION.
REMOVE ALL BURRS AND SHARP EDGES

MS 2818 C

THE CONTENTS OF THIS DRAWING ARE THE EXCLUSIVE PROPERTY OF THE TECHNICAL MATERIEL CORP. ITS UNAUTHORIZED USE OR REPRODUCTION IN WHOLE OR IN PART IS STRICTLY FORBIDDEN.

REQ. PER UNIT

1

USED ON

MODEL

ASS'Y. NO.

DATE

RAK-9G

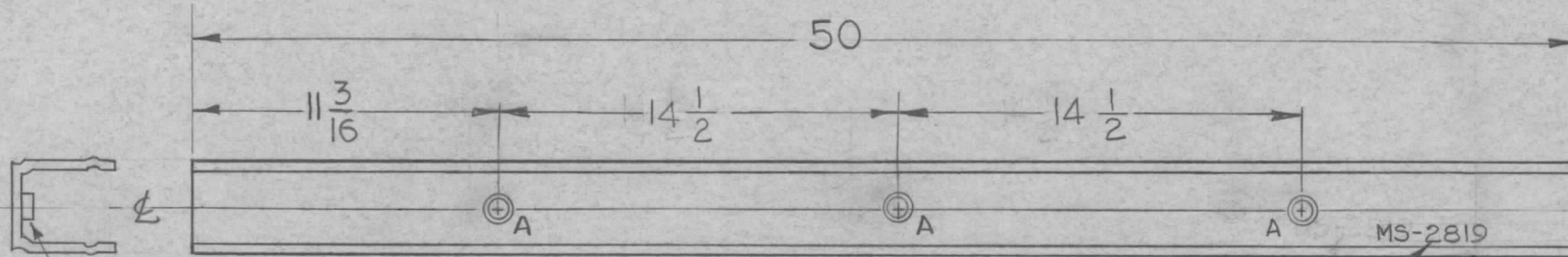
AX-340

1-9-62

MS-2819

LEGEND

HOLE	DESCRIPTION	REQ.
A	.191-.194 DIA	3



MOUNT IN ALL "A" HOLES AFTER FINISH

METAL STAMP TMC PART No. IN 1/8 HIGH GOTHIC AS SHOWN

MOUNT INSERTS AFTER FINISHING

UNLESS OTHERWISE SPECIFIED DIMENSIONS ARE IN INCHES AND INCLUDE CHEMICALLY APPLIED OR PLATED FINISHES	
DECIMALS	FRACTIONS
.X ± .05	± 1/64
.XX ± .01	ANGLES ± 0° 30'
.XXX ± .005	

TOLERANCES

CUT HERE GUARANTEED 2-66

REF: PO-160

REQ.	ITEM	PART NO.	DESCRIPTION	SYMBOL
3	1	NT-129-632-3	NUT, ROUND, SWAGE TYPE	A
STOCK SIZE			THE TECHNICAL MATERIEL CORP. MAMARONECK, NEW YORK STRIP, CHANNEL, AC	
MATERIAL				
TYPE & TEMPER HEAT TREAT. SPEC.				
FINISH & SPEC. NO.			ELEC. DES. APP.	MECH. DES. APP.

SYM	DESCRIPTION	DATE	CH. NO.	DRAFTS	CHECKER	ENG. APP.
	UNLESS OTHERWISE SPECIFIED: DIMENSIONS ARE IN INCHES TOLERANCES ON					
	FRAC. ± 1/64 DEC. ± .005 ANGLES ± 1/2°	SCALE: DO NOT SCALE				
		MAXIMUM ALLOWABLE TOLERANCES HAVE BEEN DETERMINED AND ANY DEVIATIONS WILL BE CAUSE FOR REJECTION. REMOVE ALL BURRS AND SHARP EDGES				

A

G.D.L. RUZZO SFM
 DRAWN CHECKED FINAL APPROVAL
 RK RK MS-2819

THE CONTENTS OF THIS DRAWING ARE THE EXCLUSIVE PROPERTY OF THE TECHNICAL MATERIEL CORP. ITS UNAUTHORIZED USE OR REPRODUCTION IN WHOLE OR IN PART IS STRICTLY FORBIDDEN.

REQ. PER UNIT

4

USED ON

MODEL

TER-5K-50

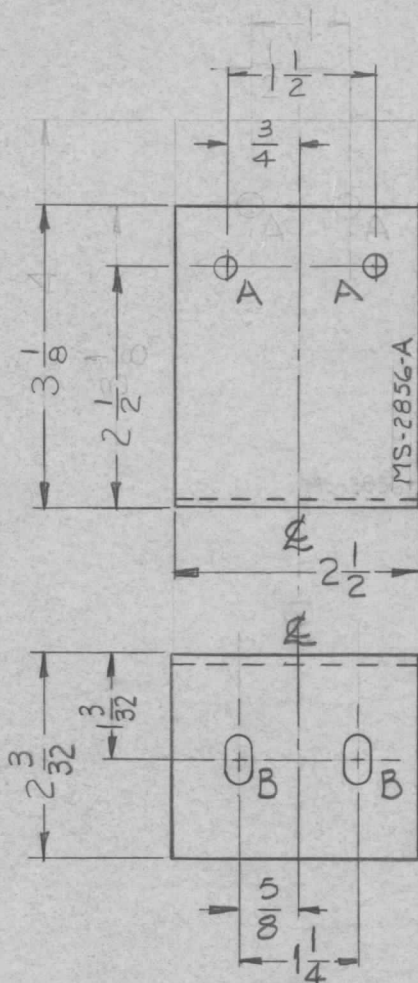
ASS'Y. NO.

DATE

1-30-62

MS-2856

A



SYMBOL	DESCRIPTION	REQ.
A	13/64 DIA.	2
B	13/64 x 13/32 SLOT	2

METAL STAMP TMC PART NO. GOTHIC 1/8 HIGH AS SHOWN.

USE MATERIAL THICKNESS FOR MAX. RADIUS ON ALL BENDS UNLESS OTHERWISE SPECIFIED

UNLESS OTHERWISE SPECIFIED DIMENSIONS ARE IN INCHES AND INCLUDE CHEMICALLY APPLIED OR PLATED FINISHES	
DECIMALS	FRACTIONS
.X ± .05	± 1/64
.XX ± .01	ANGLES
.XXX ± .005	± 0° 30'

CUT HERE GUARANTEED 2-66

REQ.	ITEM	PART NO.				DESCRIPTION	SYMBOL	
		.081 THK.				THE TECHNICAL MATERIEL CORP. MAMARONECK, NEW YORK BRACKET, TOP SUPPORT TER-5000-50	A	
		STOCK SIZE						
		ALUMINUM						
A	DIMS CLARIFIED	9-28-62	7258	GS.	<i>[Signature]</i>			
SYM	DESCRIPTION	DATE	CH. NO.	DRAFTS	CHECKER	ENG. APP.		
UNLESS OTHERWISE SPECIFIED: DIMENSIONS ARE IN INCHES TOLERANCES ON FRAC. ± 1/64 DEC. ± .005 ANGLES ± 1/2°		SCALE: Do Not SCALE				5052-432	<i>[Signature]</i>	<i>[Signature]</i>
MAXIMUM ALLOWABLE TOLERANCES HAVE BEEN DETERMINED AND ANY DEVIATIONS WILL BE CAUSE FOR REJECTION. REMOVE ALL BURRS AND SHARP EDGES		5404 YELLOW IRIDITE		TYPE & TEMPER	HEAT TREAT. SPEC.	DRAWN	CHECKED	FINAL APPROVAL
		FINISH & SPEC. NO.		ELEC. DES. APP.		MECH. DES. APP.	MS-2856	A

THE CONTENTS OF THIS DRAWING ARE THE EXCLUSIVE PROPERTY OF THE TECHNICAL MATERIEL CORP. ITS UNAUTHORIZED USE OR REPRODUCTION IN WHOLE OR IN PART IS STRICTLY FORBIDDEN.

REQ. PER UNIT

2

MODEL

HFA-1

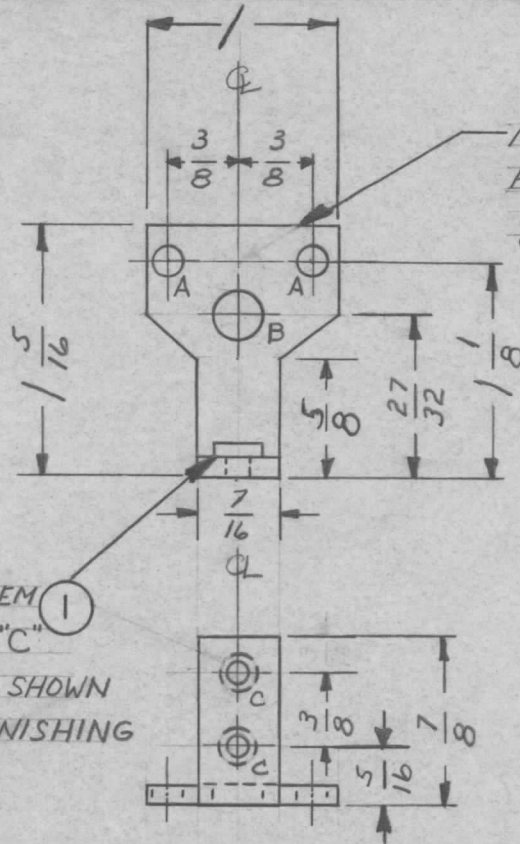
USED ON

ASS'Y. NO.

DATE

7-26-62

MS-2858



METAL STAMP TMC
PART NO. MS-2858
1/8" HIGH GOTHIC ON
REAR.

HOLES.	REQ.
A-5/32 DIA.	2
B-1/4 DIA.	1
C-.191-.194 DIA.	2

MOUNT ITEM
"1" IN ALL "C"
HOLES AS SHOWN
AFTER FINISHING

USE MATERIAL THICKNESS FOR MAX. RADIUS
ON ALL BENDS UNLESS OTHERWISE SPECIFIED

BLANK SIZE 1.2 1/16

UNLESS OTHERWISE SPECIFIED
DIMENSIONS ARE IN INCHES AND INCLUDE
CHEMICALLY APPLIED OR PLATED FINISHES

DECIMALS	TOLERANCES	FRACTIONS
.X ± .05		± 1/64
.XX ± .01		ANGLES
.XXX ± .005		± 0° 30'

CUT HERE
GUARANTEED
2-66

2	1	NT-129-632-4	NUT, ROUND, SWAGE TYPE	C
REQ.	ITEM	PART NO.	DESCRIPTION	SYMBOL
		.081	THE TECHNICAL MATERIEL CORP.	
		STOCK SIZE	MAMARONECK, NEW YORK	
		ALUMINUM	BRACKET, MOUNTING, RELAY	
		MATERIAL		
		5052-H32	G. SENCEN	BP
		TYPE & TEMPER	HEAT TREAT. SPEC.	DRAWN
		5404 YEL. IRIDITE		C.R. Fazio
		FINISH & SPEC. NO.	ELEC. DES. APP.	MECH. DES. APP.
				MS-2858

UNLESS OTHERWISE SPECIFIED:
DIMENSIONS ARE IN INCHES
TOLERANCES ON
FRAC. ± 1/64 DEC. ± .005 ANGLES ± 1/2°

SCALE:
MAXIMUM ALLOWABLE TOLERANCES HAVE
BEEN DETERMINED AND ANY DEVIATIONS
WILL BE CAUSE FOR REJECTION.
REMOVE ALL BURRS AND SHARP EDGES

THE CONTENTS OF THIS DRAWING ARE THE EXCLUSIVE PROPERTY OF THE TECHNICAL MATERIEL CORP. ITS UNAUTHORIZED USE OR REPRODUCTION IN WHOLE OR IN PART IS STRICTLY FORBIDDEN.

REQ. PER UNIT

4

MODEL

HAF-1

USED ON

ASS'Y. NO.

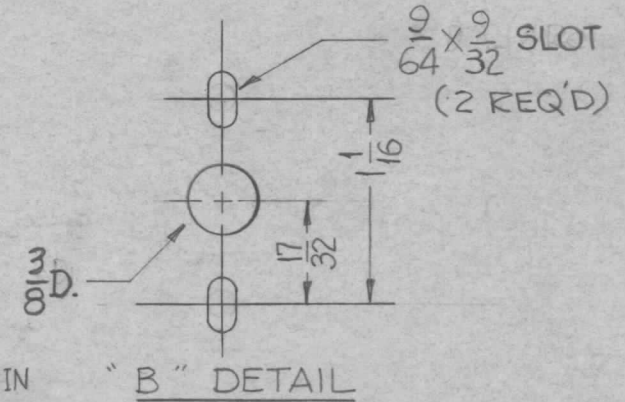
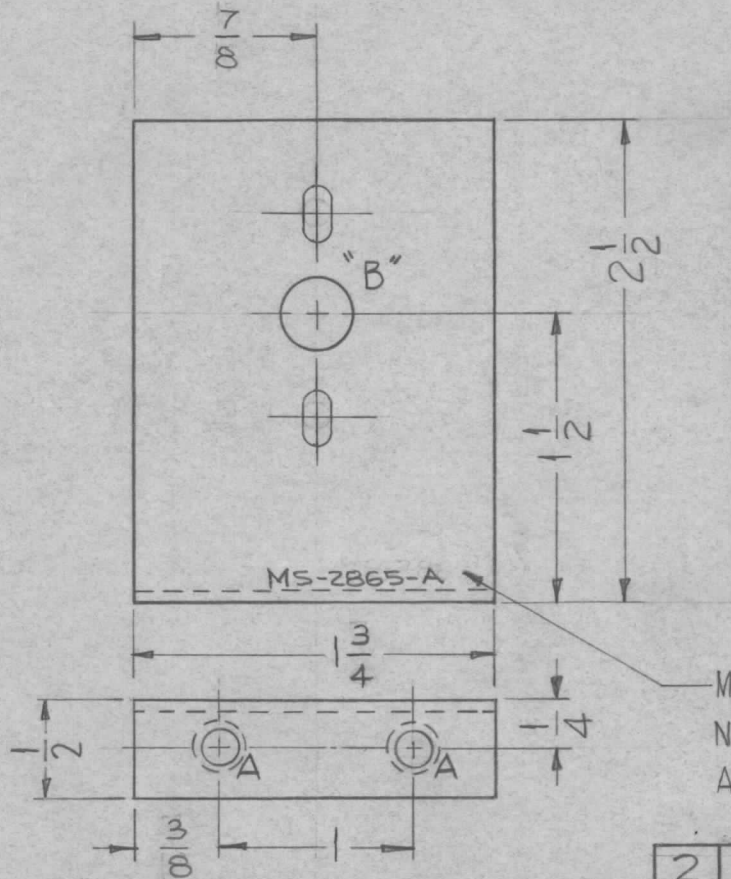
DATE

7-26-62

MS-2865

A

HOLES	DESCRIPTION	REQ.
A	.191-.194 DIA. (TO MOUNT ITEM 1)	2
B	SEE DETAIL BELOW	1



MOUNT ITEM 1 IN ALL "A" HOLES AS SHOWN, AFTER FINISHING.

METAL STAMP TMC PART NO 1/8 HIGH GOTHIC, AS SHOWN.

UNLESS OTHERWISE SPECIFIED DIMENSIONS ARE IN INCHES AND INCLUDE CHEMICALLY APPLIED OR PLATED FINISHES		
DECIMALS	TOLERANCES	FRACTIONS
.X ± .05		± 1/64
.XX ± .01		ANGLES ± 0° 30'
.XXX ± .005		

CUT HERE GUARANTEED 2-66

USE MATERIAL THICKNESS FOR MAX. RADIUS ON ALL BENDS UNLESS OTHERWISE SPECIFIED.
BLANK SIZE 2 3/32 X 1 1/8

2	1	NT-129-632-4	NUT, ROUND SWAGE TYPE	A
REQ.	ITEM	PART NO.	DESCRIPTION	SYMBOL
			.064 THK.	
			STOCK SIZE	
			ALUMINUM	
			MATERIAL	
		5052-H32		
		TYPE & TEMPER	HEAT TREAT. SPEC.	
		S-404-YELLOW IRIDITE		
		FINISH & SPEC. NO.		
			DRAWN	CHECKED
			MECH. DES. APP.	
				FINAL APPROVAL
				MS-2865 A

UNLESS OTHERWISE SPECIFIED:
DIMENSIONS ARE IN INCHES
TOLERANCES ON
FRAC. ± 1/64 DEC. ± .005 ANGLES ± 1/2°

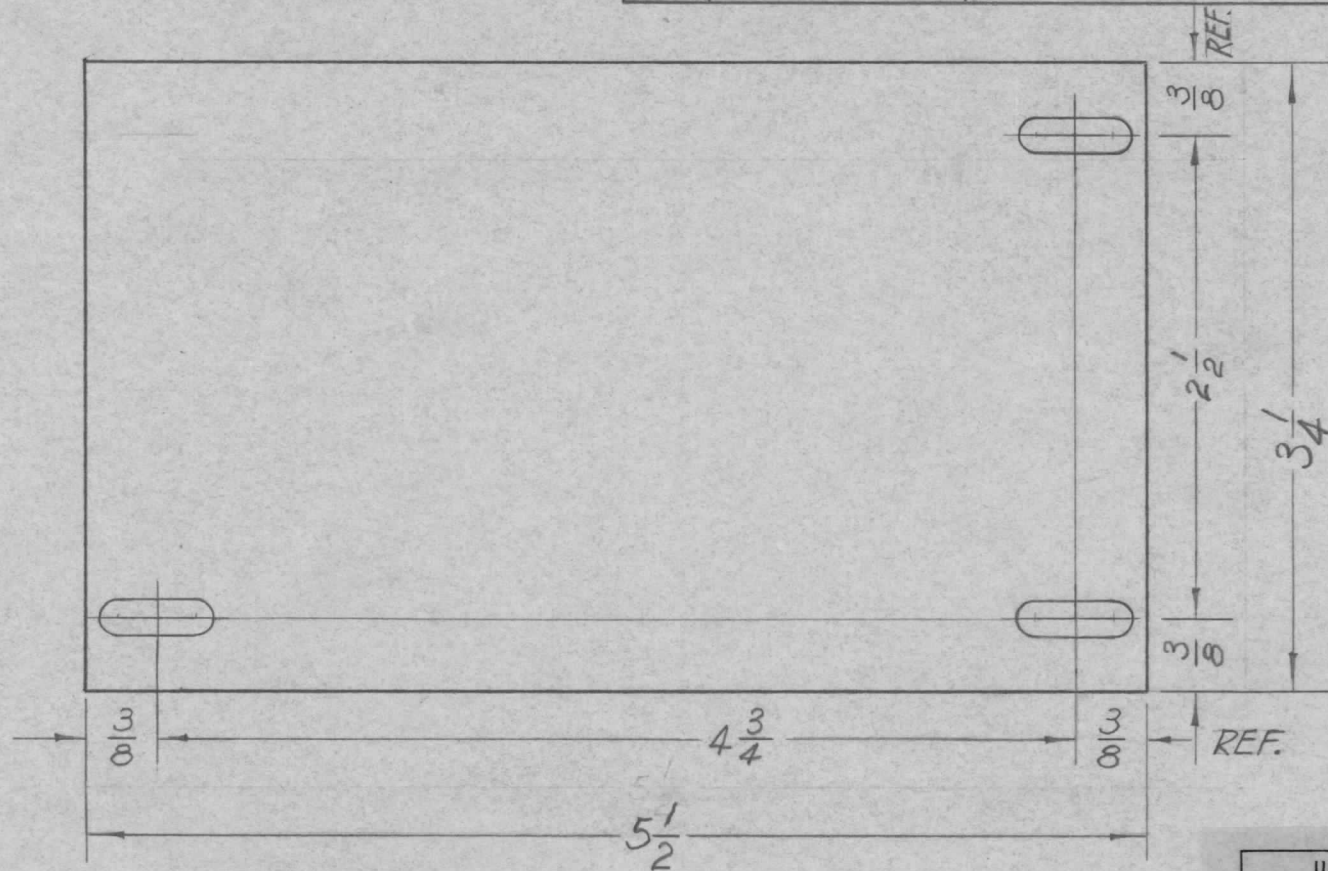
SCALE: DO NOT SCALE
MAXIMUM ALLOWABLE TOLERANCES HAVE BEEN DETERMINED AND ANY DEVIATIONS WILL BE CAUSE FOR REJECTION.
REMOVE ALL BURRS AND SHARP EDGES

A	9/64 X 9/32 SLOTS WERE 9/64 DIA HOLES	9/27/63	10079	HPD	JAB	JTB
SYM	DESCRIPTION	DATE	CH. NO.	DRAFTS	CHECKER	ENG. APP.

THE CONTENTS OF THIS DRAWING ARE THE EXCLUSIVE PROPERTY OF THE TECHNICAL MATERIEL CORP. ITS UNAUTHORIZED USE OR REPRODUCTION IN WHOLE OR IN PART IS STRICTLY FORBIDDEN.

REQ. PER UNIT	USED ON		
	MODEL	ASS'Y. NO.	DATE
1	RTS-2		2-13-62
1	RTX-2		

MS-2867



LEGEND		
HOLE	DESCRIPTION	REQ.
A	$\frac{13}{64} \times \frac{13}{32}$ SLOTS	3

UNLESS OTHERWISE SPECIFIED DIMENSIONS ARE IN INCHES AND INCLUDE CHEMICALLY APPLIED OR PLATED FINISHES		
DECIMALS	TOLERANCES	FRACTIONS
.X ± .05		± 1/64
.XX ± .01		ANGLES
.XXX ± .005		± 0° 30'

CUT HERE GUARANTEED 2-66

REQ.	ITEM	PART NO.	DESCRIPTION		SYMBOL			
		.064	THE TECHNICAL MATERIEL CORP.					
		STOCK SIZE	MAMARONECK, NEW YORK					
		ALUMINUM	COVER, CONDENSER CABLE					
		MATERIAL	MOUNTING COV					
SYM	DESCRIPTION	DATE	CH. NO.	DRAFTS	CHECKER	ENG. APP.		
UNLESS OTHERWISE SPECIFIED: DIMENSIONS ARE IN INCHES TOLERANCES ON		SCALE: DO NOT SCALE		5052-H32	K.C. [Signature]	[Signature]		
FRAC. ± 1/64 DEC. ± .005 ANGLES ± 1/2°		MAXIMUM ALLOWABLE TOLERANCES HAVE BEEN DETERMINED AND ANY DEVIATIONS WILL BE CAUSE FOR REJECTION. REMOVE ALL BURRS AND SHARP EDGES		TYPE & TEMPER	HEAT TREAT. SPEC.	DRAWN	CHECKED	FINAL APPROVAL
				YELLOW IRIDITE		[Signature]		MS-2867
				FINISH & SPEC. NO.	ELEC. DES. APP.	MECH. DES. APP.		

THE CONTENTS OF THIS DRAWING ARE THE EXCLUSIVE PROPERTY OF THE TECHNICAL MATERIEL CORP. ITS UNAUTHORIZED USE OR REPRODUCTION IN WHOLE OR IN PART IS STRICTLY FORBIDDEN.

REQ. PER UNIT

2

MODEL

HFS-1

USED ON

ASS'Y. NO.

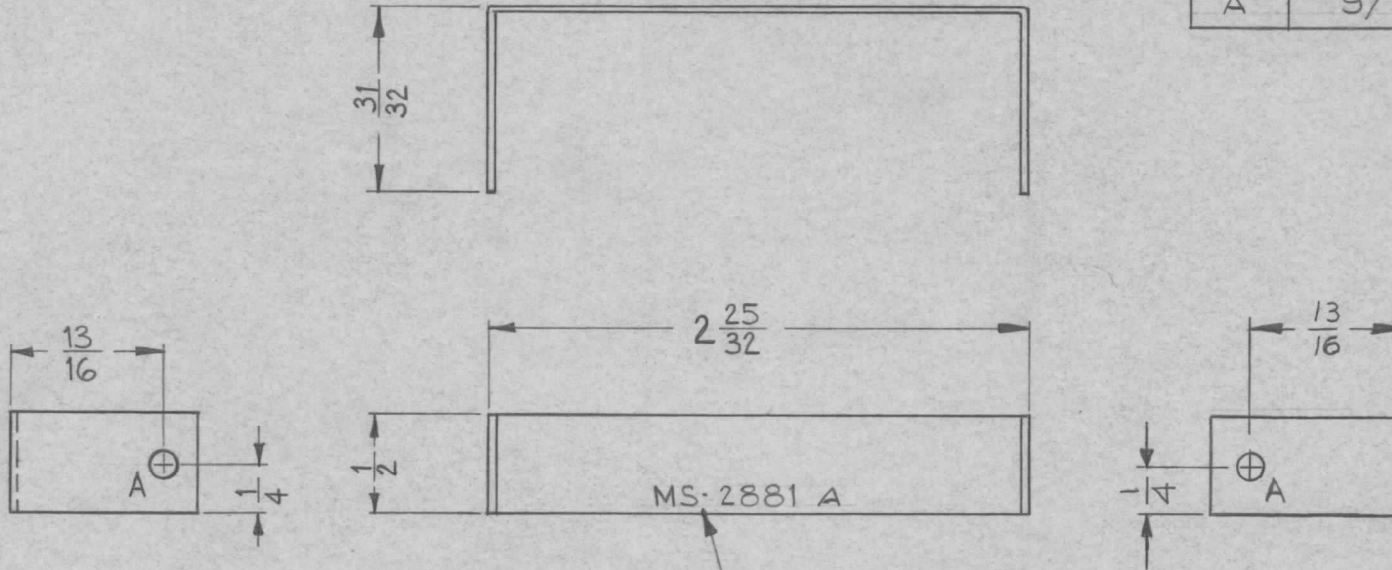
DATE

8-15-62

MS-2881

A

LEGEND		
HOLE	DESCRIPTION	REQ.
A	9/64 DIA.	2



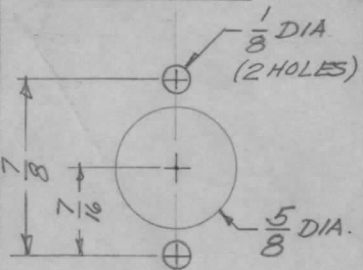
METAL STAMP TMC PART NO. 1/8 HIGH GOTHIC AS SHOWN.

UNLESS OTHERWISE SPECIFIED DIMENSIONS ARE IN INCHES AND INCLUDE CHEMICALLY APPLIED OR PLATED FINISHES	
DECIMALS	FRACTIONS
.X ± .05	± 1/64
.XX ± .01	ANGLES
.XXX ± .005	± 0° 30'

CUT HERE GUARANTEED 2-66

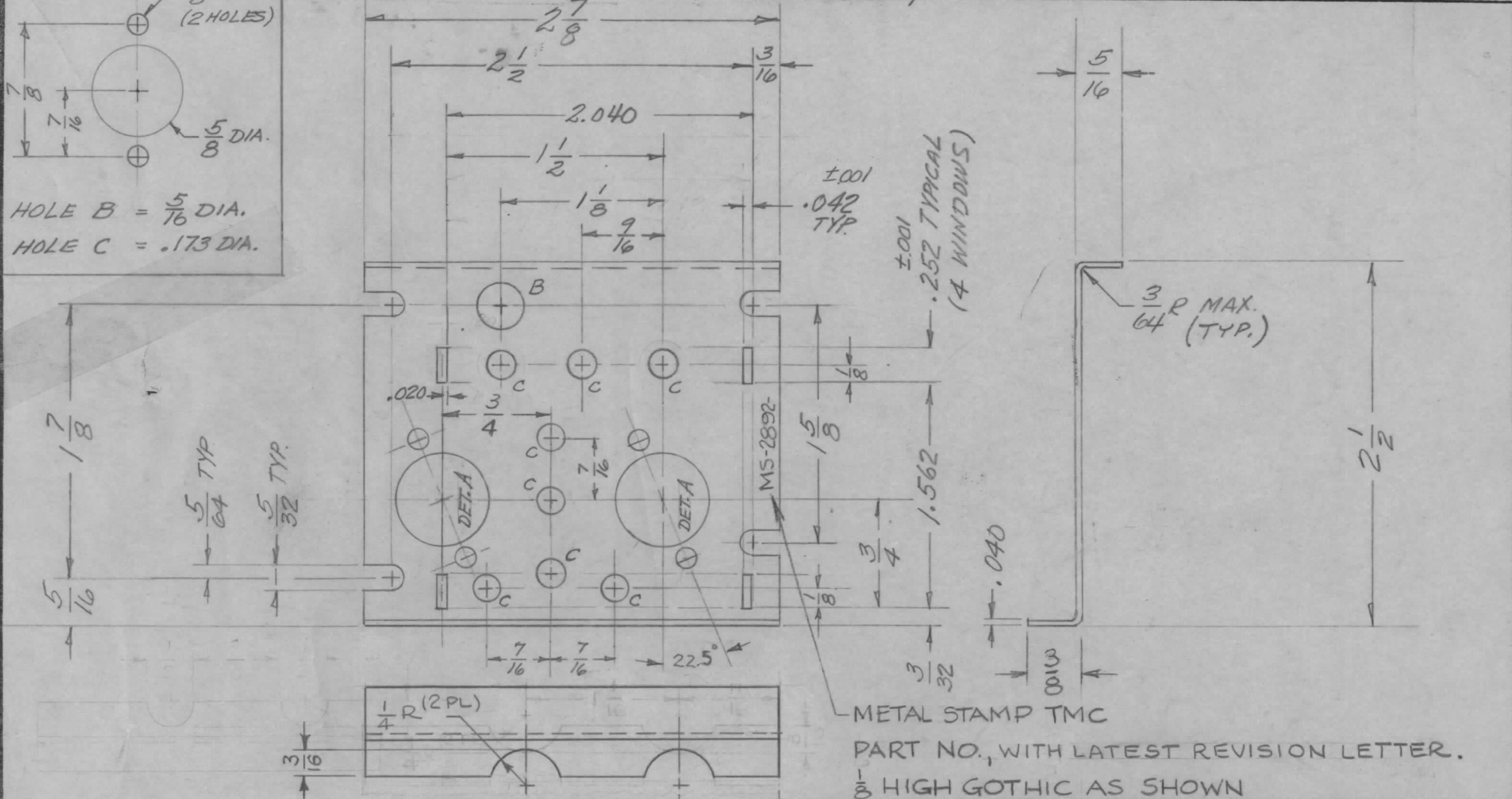
REQ.	ITEM	PART NO.				J. STRUMER	DESCRIPTION	SYMBOL
		.020				THE TECHNICAL MATERIEL CORP.		
		STOCK SIZE				MAMARONECK, NEW YORK		
A	ADDED SIDE VIEW & "A" HOLE	3-19-64	11060	A.M.	@	LEF	BRACKET, SUPPORT CRYSTAL	
						MATERIAL		
						5052-H32		
						TYPE & TEMPER HEAT TREAT. SPEC.		
						S404 YEL IRIDITE		
						FINISH & SPEC. NO.		
UNLESS OTHERWISE SPECIFIED: DIMENSIONS ARE IN INCHES TOLERANCES ON		SCALE: DO NOT SCALE				DRAWN		
FRAC. ± 1/64 DEC. ± .005 ANGLES ± 1/2°		MAXIMUM ALLOWABLE TOLERANCES HAVE BEEN DETERMINED AND ANY DEVIATIONS WILL BE CAUSE FOR REJECTION. REMOVE ALL BURRS AND SHARP EDGES				CHECKED		
						FINAL APPROVAL		
						MS-2881 A		
						ELEC. DES. APP. MECH. DES. APP.		

DETAIL A



HOLE B = $\frac{5}{16}$ DIA.
HOLE C = .173 DIA.

REQ. PER UNIT	USED ON			MS-2892	B
	MODEL	ASS'Y. NO.	DATE		
1	HFR-1/T	A 2343	4/25/61		



METAL STAMP TMC
PART NO., WITH LATEST REVISION LETTER.
 $\frac{1}{8}$ HIGH GOTHIC AS SHOWN

							PART NO.	DESCRIPTION	SYMBOL	
							.040 THK	THE TECHNICAL MATERIEL CORP. MAMARONECK, NEW YORK CHASSIS, ELECTRICAL EQUIP. OSC.		
							STOCK SIZE			
							BRASS			
							MATERIAL			
							$\frac{1}{2}$ HARD	J.A.	BP	
							TYPE & TEMPER	DRAWN		CHECKED
							FINISH & SPEC. NO.	J. ANGER	FINAL APPROVAL	
								ELEC. DES. APP	MECH. DES. APP	MS-2892 B

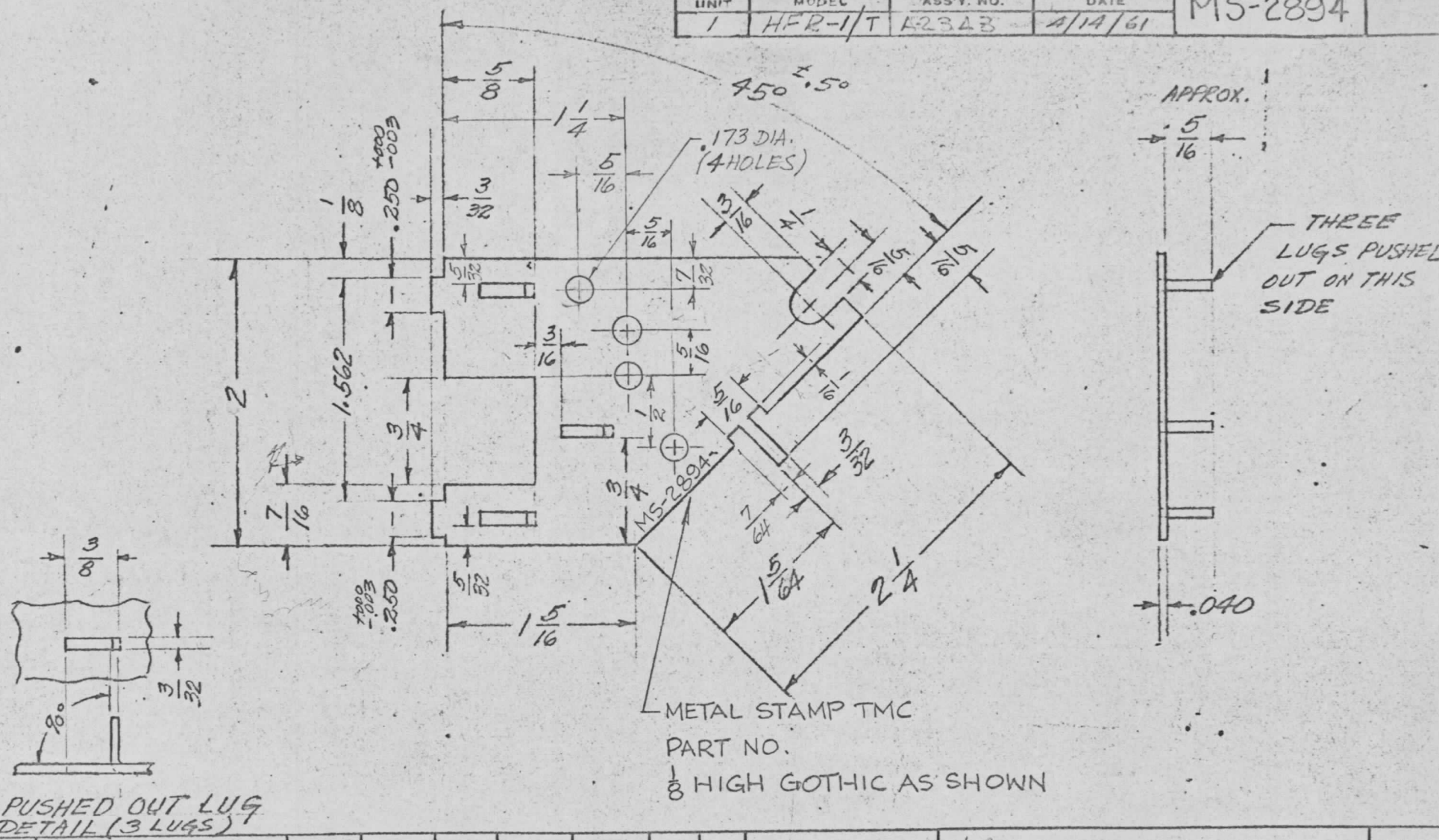
ISSUE	ITEM	CHANGED FROM	DATE	CH. NO.	DRAFTS	CHECKER	ENG. APP.
B	1	1/4R NOTCHES RELOCATED	7.14.64	11829	lob	@	<i>[Signature]</i>
A	1	NOTCHES ADDED	1/30/64	10822	T.R.	<i>[Signature]</i>	<i>[Signature]</i>

TOLERANCES
DEC. DIM. $\pm .005$
FRAC. DIM. $\pm .010$
ANGULAR DIM. $\pm .5^\circ$

SCALE: 1:1

MAXIMUM ALLOWABLE TOLERANCES HAVE BEEN DETERMINED AND ANY DEVIATIONS WILL BE CAUSE FOR REJECTION. REMOVE ALL BURRS AND SHARP EDGES

REQ. PER UNIT	USED ON			MS-2894
	MODEL	ASS'Y. NO.	DATE	
1	HFR-1/T	K2343	4/14/61	

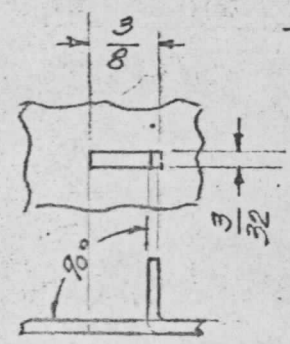
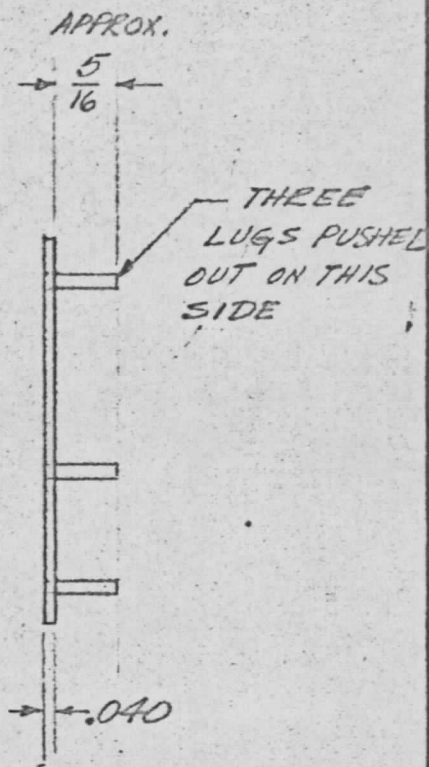
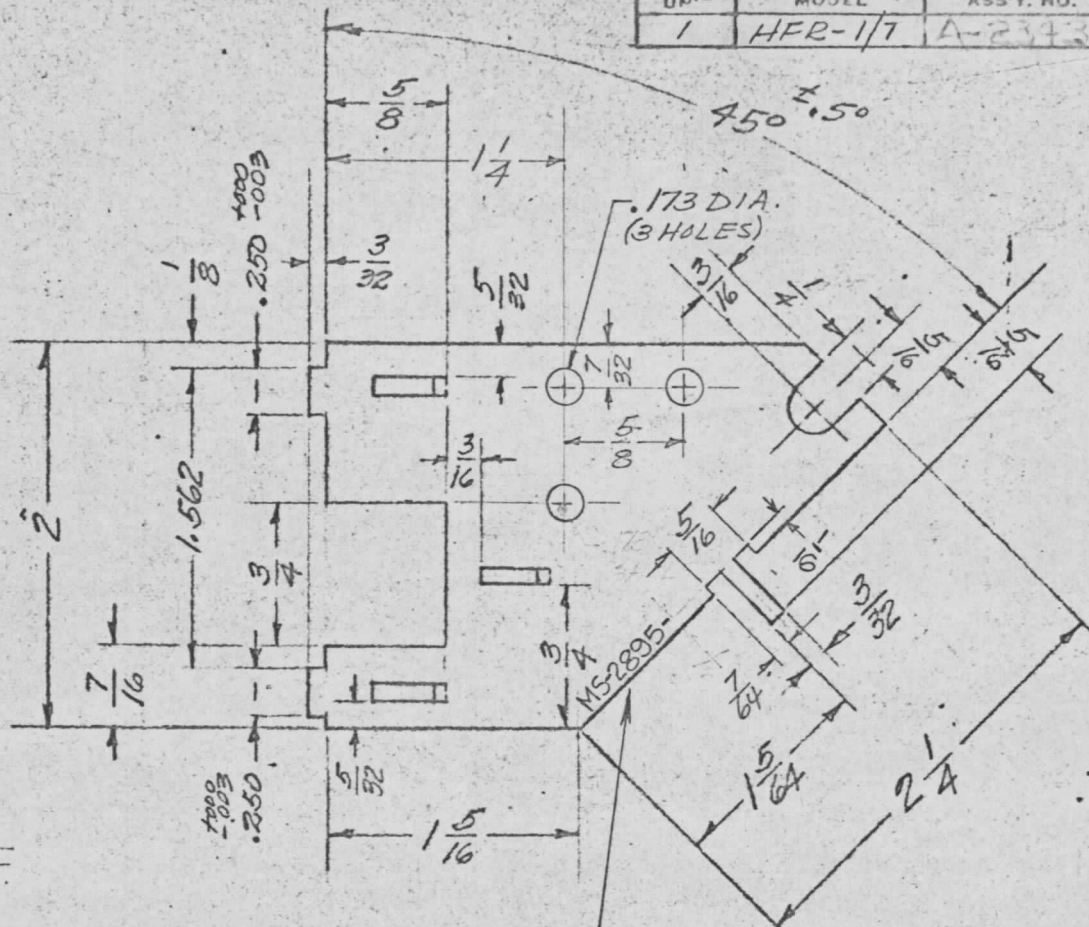


PUSHED OUT LUG
DETAIL (3 LUGS)

METAL STAMP TMC
PART NO.
1/8 HIGH GOTHIC AS SHOWN

REQ.	ITEM	PART NO.	DESCRIPTION	SYMBOL					
			J. ANGER						
		.040 THK	THE TECHNICAL MATERIEL CORP.						
		STOCK SIZE	MAMARONECK, NEW YORK						
		BRASS	CHASSIS, ELEC. EQUIP. BAFFLE						
		MATERIAL	OSC. #1						
ISSUE	ITEM	CHANGED FROM	DATE	CH. NO.	DRAFTS	CHECKER	ENG. APP.		
TOLERANCES		SCALE: 1:1		1/2 HARD		J. ANGER			
DEC. DIM. ± .002		MAXIMUM ALLOWABLE TOLERANCES HAVE BEEN DETERMINED AND ANY DEVIATIONS WILL BE CAUSE FOR REJECTION.		TYPE & TEMPER		DRAWN	CHECKED	FINAL APPROVAL	
FRAC. DIM. ± .010		REMOVE ALL BURRS AND SHARP EDGES		HEAT TREAT. SPEC.		J. ANGER		MS-2894	
ANGULAR DIM. ± 5°				FINISH & SPEC. NO.		ELEC. DES. APP	MECH. DES. APP		

REQ. PER. UP	USED ON			MS-2895
	MODEL	ASS'Y. NO.	DATE	
1	HFR-1/7	A-2343	4/14/61	



PUSHED OUT LUG
DETAIL (3 LUGS)

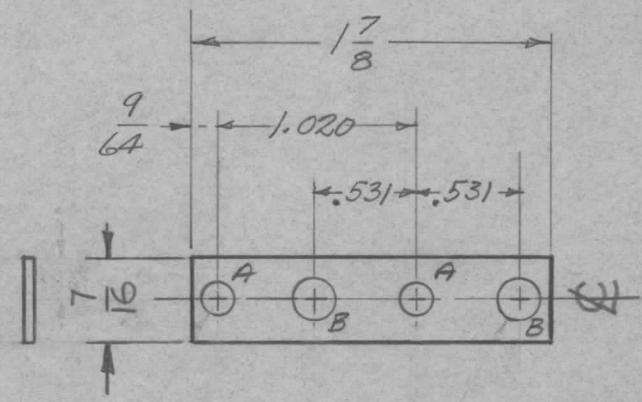
METAL STAMP TMC
PART NO.
1/8 HIGH GOTHIC AS SHOWN.

REQ.	ITEM	PART NO.	DESCRIPTION		SYMBOL							
			THE TECHNICAL MATERIEL, CORP.									
			MAMARONECK, NEW YORK									
			CHASSIS, ELEC. EQUIP. BAFFLE									
			OSC. #2									
ISSUE	ITEM	CHANGED FROM	DATE	CH. NO.	DRAFTS	CHECKER	ENG. APP.	1/2 HARD	J. LANGER	BP		
TOLERANCES			SCALE: 1:1			MAXIMUM ALLOWABLE TOLERANCES HAVE BEEN DETERMINED AND ANY DEVIATIONS WILL BE CAUSE FOR REJECTION. REMOVE ALL BURRS AND SHARP EDGES		TYPE & TEMPER	HEAT TREAT. SPEC.	DRAWN	CHECKED	FINAL APPROVAL
DEC. DIM. ± .002										J. LANGER		MS-2895
FRAC. DIM. ± .010												
ANGULAR DIM. ± .5°								FINISH & SPEC. NO.	ELEC. DES. APP	MECH. DES. APP		

REQ. PER UNIT	USED ON		
	MODEL	ASS'Y. NO.	DATE
32	HFR-1/T	SEE NOTE	9/6/61

MS-2897

USED ON
4 EA. REQ ON A-2371 TO A-2378 INCLUSIVE



HOLE LEGEND		
HOLE	DISCRIPTION	REQ.
A	5/32 DIA.	2
B	.203 DIA.	2

5/32 DIA. (2 HOLES)
.203 DIA. (2 HOLES)

							REQ. ITEM	PART NO.	J. ANGER DESCRIPTION		SYMBOL		
							.016 THK.		THE TECHNICAL MATERIEL CORP.				
							STOCK SIZE		MAMARONECK, NEW YORK				
							COPPER		STRAP, GROUND				
							MATERIAL						
ISSUE	ITEM	CHANGED FROM	DATE	CH. NO.	DRAFTS	CHECKER	ENG. APP.	SOFT	ROCKWELL #F 45	ab	RUZZO	BP	
TOLERANCES			SCALE: Do Not Scale				TYPE & TEMPER		HEAT TREAT. SPEC.	DRAWN	CHECKED	FINAL APPROVAL	
DEC. DIM. ± .005			MAXIMUM ALLOWABLE TOLERANCES HAVE BEEN DETERMINED AND ANY DEVIATIONS WILL BE CAUSE FOR REJECTION. REMOVE ALL BURRS AND SHARP EDGES				SILVER PLATE.0003		J. ANGER			MS-2897	
FRAC. DIM. ± 1/64							FINISH & SPEC. NO.		ELEC. DES. APP		MECH. DES. APP		
ANGULAR DIM. ±													