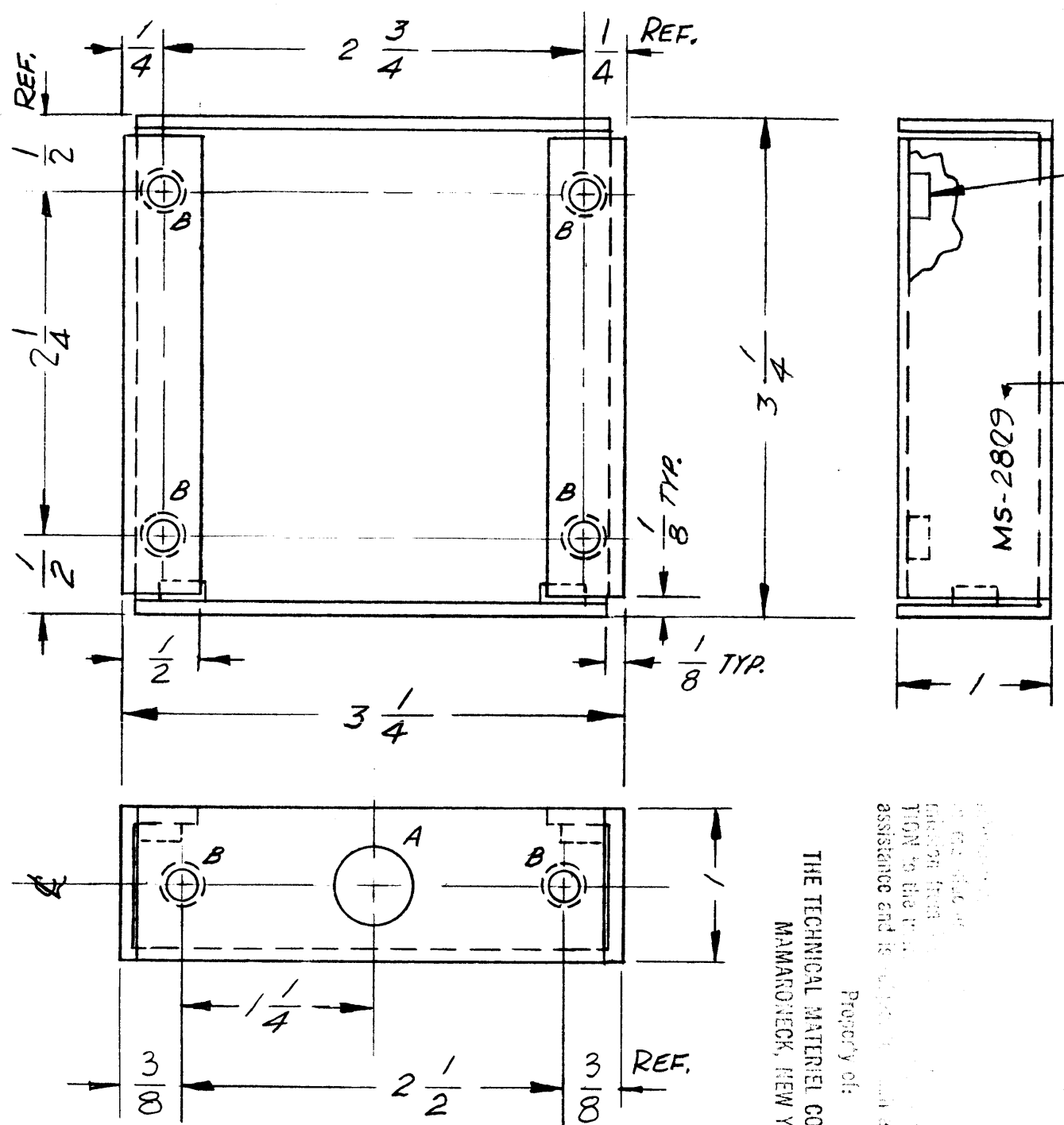


MS-2829

THE CONTENTS OF THIS DRAWING ARE THE EXCLUSIVE PROPERTY OF THE TECHNICAL MATERIEL CORP. ITS UNAUTHORIZED USE OR REPRODUCTION IN WHOLE OR IN PART IS STRICTLY FORBIDDEN.



MOUNT ITEM 1 IN ALL "B" HOLES AFTER FINISHING.

METAL STAMP TMC PART NO. 1/8 HIGH GOTHIC AS SHOWN.

HOLES:
 A - 1/2 DIA. 1 REQ.
 B - .191-.194 DIA. 6 REQ.

USE MATERIAL THICKNESS FOR MAX. RADIUS ON ALL BENDS UNLESS OTHERWISE SPECIFIED

MOUNT INSERTS AFTER FINISHING

THE TECHNICAL MATERIEL CORPORATION
 MAMARONECK, NEW YORK

Property of:
 THE TECHNICAL MATERIEL CORPORATION
 MAMARONECK, NEW YORK
 No part of this drawing is to be reproduced or transmitted in any form or by any means, electronic or mechanical, including photocopying, recording, or by any information storage and retrieval system, without the prior written permission of the Technical Materiel Corporation.

6	1	NT129-632-4	NUT, ROUND, SWAGE TYPE	B
REQ.	ITEM	PART NO.	DESCRIPTION	SYMBOL
.064			THE TECHNICAL MATERIEL CORP. MAMARONECK, NEW YORK	
ALUMINUM			BRACKET, MOUNTING, FREQUENCY STANDARD	
5052-H32			WA	J.P.
TYPE & TEMPER			DRAWN	CHECKED
5404-YEL. IRIDITE			8D	J.P.
FINISH & SPEC. NO.			ELEC. DES. APP.	MECH. DES. APP.
				MS-2829

SYM	DESCRIPTION	DATE	CH. NO.	DRAFTS	CHECKER	ENG. APP.
UNLESS OTHERWISE SPECIFIED:						
DIMENSIONS ARE IN INCHES		SCALE:				
TOLERANCES ON		MAXIMUM ALLOWABLE TOLERANCES HAVE BEEN DETERMINED AND ANY DEVIATIONS WILL BE CAUSE FOR REJECTION.				
FRACTIONS ± 1/64		REMOVE ALL BURRS AND SHARP EDGES				
DECIMALS ± .05						
ANGLES ± 1/2°						

1	C55-1A			1/10/62
REQ. PER UNIT	MODEL	SECTION	ASS'Y. NO.	DATE
USED ON				