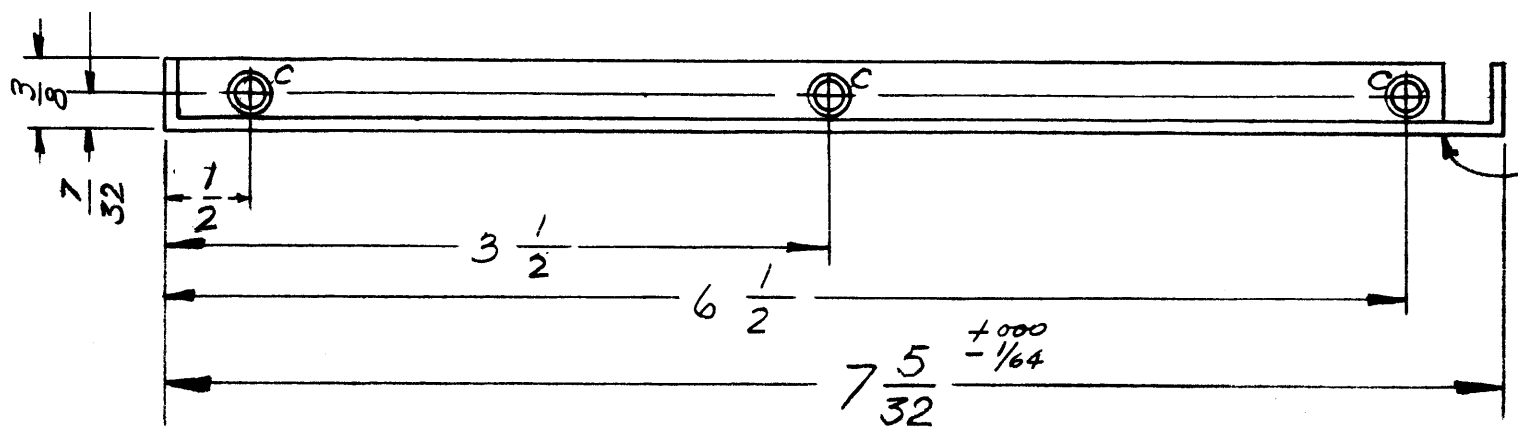


MS-2816

THE CONTENTS OF THIS DRAWING ARE THE EXCLUSIVE PROPERTY OF THE TECHNICAL MATERIEL CORP. ITS UNAUTHORIZED USE OR REPRODUCTION IN WHOLE OR IN PART IS STRICTLY FORBIDDEN.

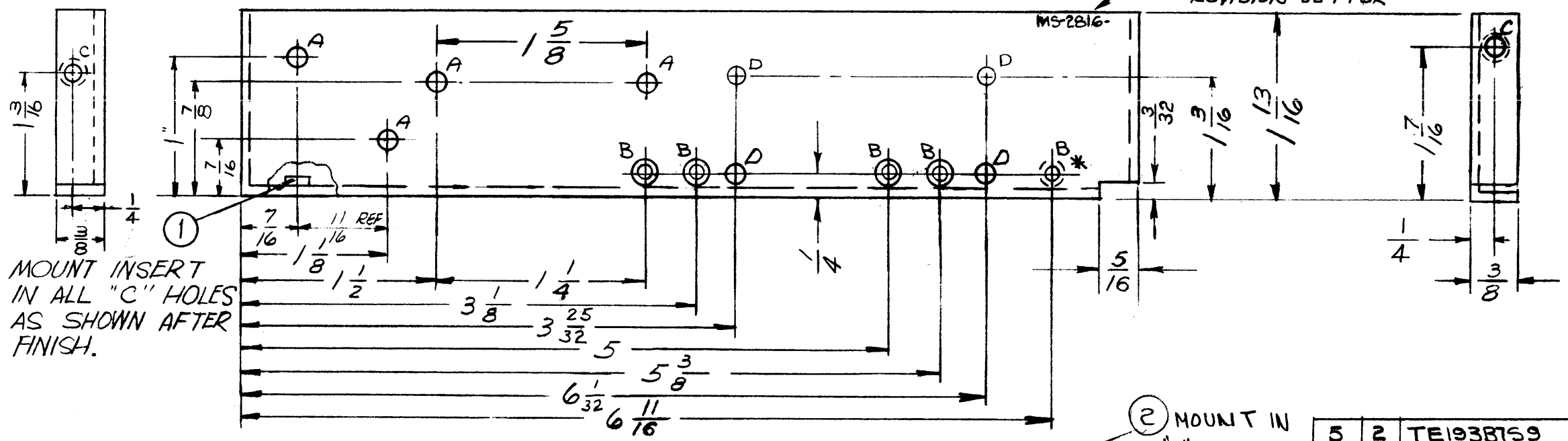
NOTE:
* INDICATES 1 "B" HOLE C'SUNK FROM REAR

~HOLES~		REQ
A	9/64 DIA.	4
B	.136 DIA. C'SINK 60°	5
C	.161/64 DIA	5
D	5/32 DIA.	4



PUNCH FROM THIS SIDE

METAL STAMP TMC PART NO. 1/8 HIGH GOTHIC, WITH LATEST REVISION LETTER



MOUNT INSERT IN ALL "C" HOLES AS SHOWN AFTER FINISH.

MOUNT IN "B" HOLES AS SHOWN

PROPERTY OF THE TECHNICAL MATERIEL CORPORATION
MAMARONECK, NEW YORK

USE MATERIAL THICKNESS FOR MAX. RADIUS ON ALL BENDS UNLESS OTHERWISE SPECIFIED

MOUNT INSERTS AFTER FINISHING

5	2	TE1938159	TERMINAL, STUD, INSULATED	B
5	1	NT-129-440-4	NUT, ROUND, SWAGE TYPE	C
REQ.	ITEM	PART NO.	M. GELLMAN DESCRIPTION	SYMBOL
		.064 THK STOCK SIZE		
		ALUMINUM		
		5052-H32		
		S404-YEL. IRIDITE		
		THE TECHNICAL MATERIEL CORP. MAMARONECK, NEW YORK		
		BRACKET, MOUNTING, RF SHIELD, #1		
		ab		
		BP		
		7-24-62		
		MS-2816		
		A		

SYM	DESCRIPTION	DATE	CH. NO.	DRAFTS	CHECKER	ENG. APP.
A	METAL STAMP NOTE UPDATED "B" HOLE WAS .136 DIA. ITEM (2) ADDED	6-6-64	12046		MR.	J
UNLESS OTHERWISE SPECIFIED:						
DIMENSIONS ARE IN INCHES						
TOLERANCES ON FRACTIONS ± 1/64 DECIMALS ± .05 ANGLES ± 1/2°						
SCALE: DO NOT SCALE						
MAXIMUM ALLOWABLE TOLERANCES HAVE BEEN DETERMINED AND ANY DEVIATIONS WILL BE CAUSE FOR REJECTION. REMOVE ALL BURRS AND SHARP EDGES						
REQ. PER UNIT	1	HER-11N				
	MODEL	SECTION	ASS'Y. NO.	DATE		
USED ON						