

THE CONTENTS OF THIS DRAWING ARE THE EXCLUSIVE PROPERTY OF THE TECHNICAL MATERIEL CORP. ITS UNAUTHORIZED USE OR REPRODUCTION IN WHOLE OR IN PART IS STRICTLY FORBIDDEN.

REQ. PER UNIT

1 SBS-1

USED ON

MODEL

ASS'Y. NO.

DATE

12-27-61

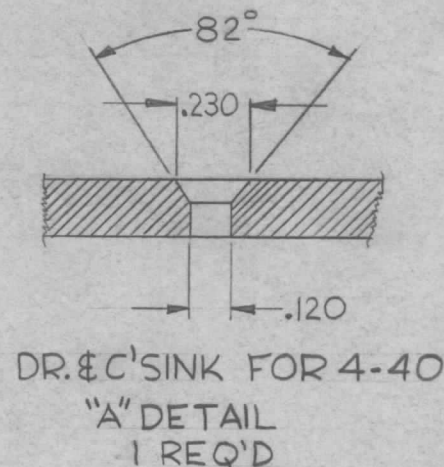
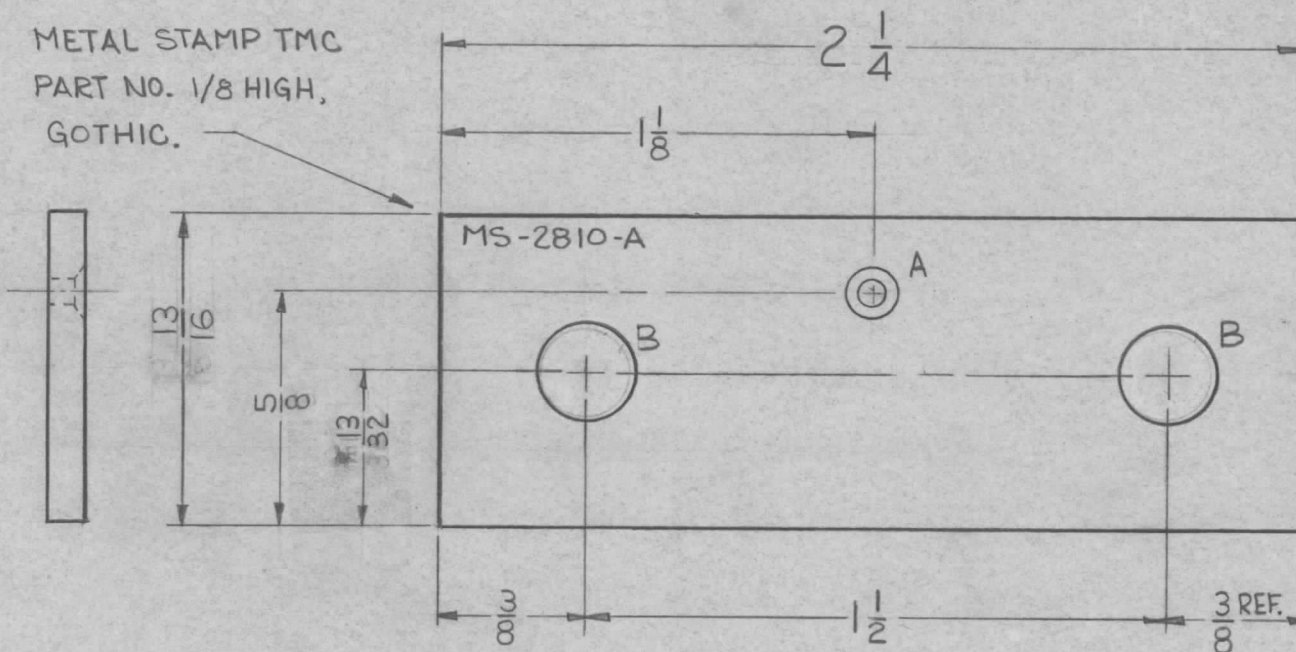
MS-2810

A

LEGEND

HOLE	DESCRIPTION	REQ'D.
A	SEE DETAIL	1
B	1/2" DIA.	2

METAL STAMP TMC  
PART NO. 1/8 HIGH,  
GOTHIC.



UNLESS OTHERWISE SPECIFIED  
DIMENSIONS ARE IN INCHES AND INCLUDE  
CHEMICALLY APPLIED OR PLATED FINISHES

DECIMALS	FRACTIONS
.X ± .05	± 1/64
.XX ± .01	ANGLES ± 0° 30'
.XXX ± .005	

TOLERANCES

CUT HERE  
GUARANTEED  
2-66

REQ.	ITEM	PART NO.	DESCRIPTION			SYMBOL
		.051	THE TECHNICAL MATERIEL CORP.			
		STOCK SIZE	MAMARONECK, NEW YORK			
A	(2) "B" HOLES WERE 15/32 DIA	10-5-62 7385	BRACKET, STANDOFF			
SYM	DESCRIPTION	DATE	CH. NO.	DRAFTS	CHECKER	ENG. APP.
UNLESS OTHERWISE SPECIFIED: DIMENSIONS ARE IN INCHES TOLERANCES ON FRAC. ± 1/64 DEC. ± .005 ANGLES ± 1/2°		SCALE: 2 X 1 (DO NOT SCALE)		5052-H32	ALUMINIUM	BRACKET, STANDOFF MOUNTING
		MAXIMUM ALLOWABLE TOLERANCES HAVE BEEN DETERMINED AND ANY DEVIATIONS WILL BE CAUSE FOR REJECTION. REMOVE ALL BURRS AND SHARP EDGES		TYPE & TEMPER	HEAT TREAT. SPEC.	DRAWN
				5404 YELLOW IRIDITE		CHECKED
				FINISH & SPEC. NO.	ELEC. DES. APP.	MECH. DES. APP.
						FINAL APPROVAL
						MS-2810 A