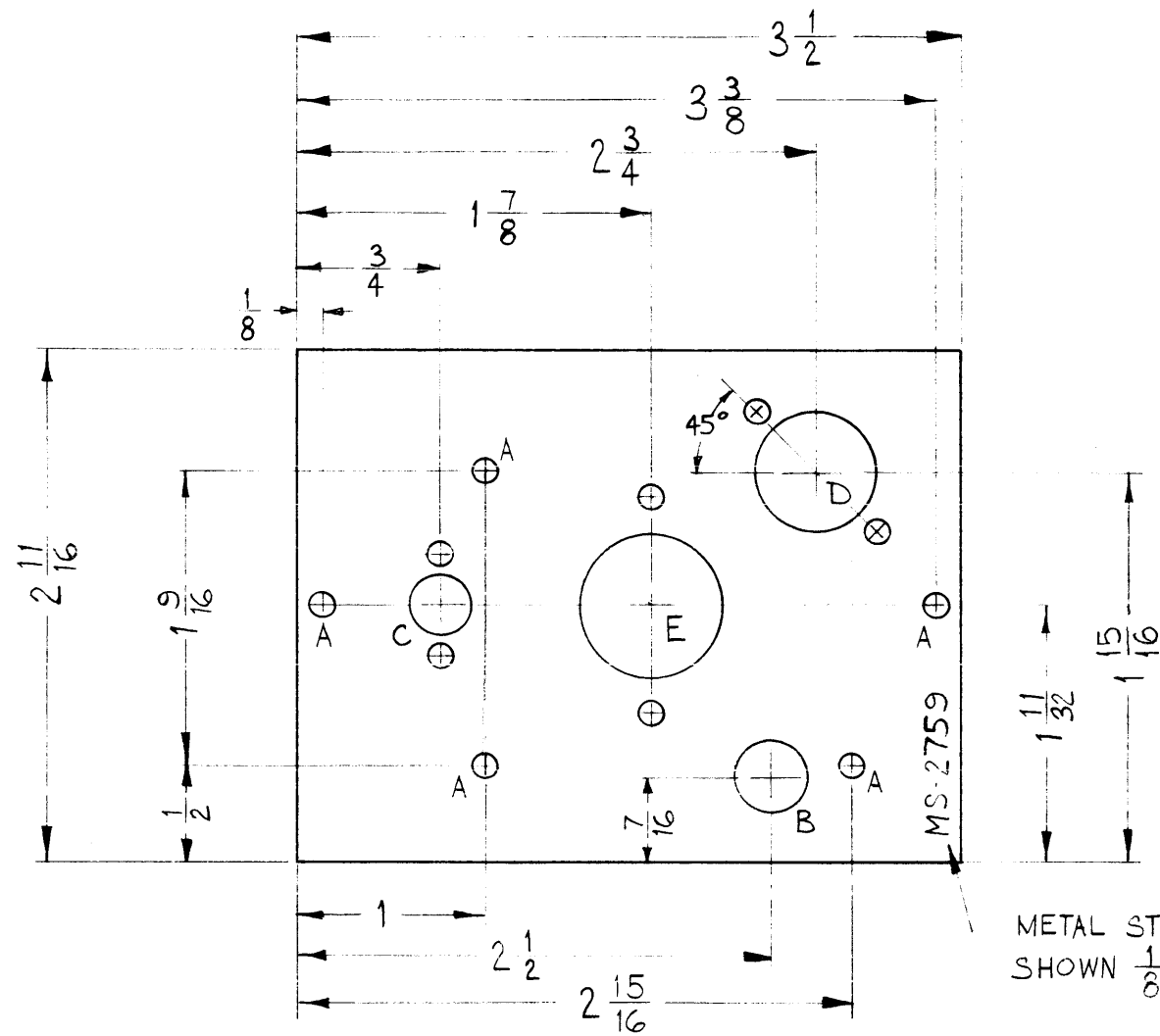
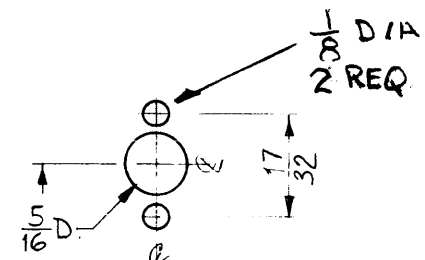


MS-2759

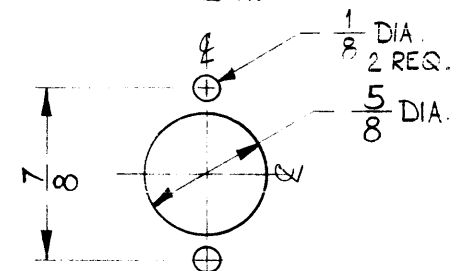


METAL STAMP TMC PART NO. AS SHOWN $\frac{1}{8}$ HIGH GOTHIC.

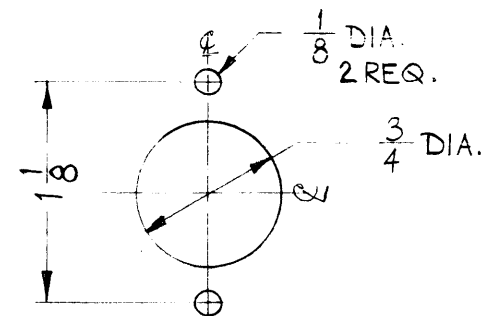
A- $\frac{1}{8}$ DIA. 5 REQ.
 B- $\frac{3}{8}$ DIA. 1 "



"C" DETAIL
1 REQ.



"D" DETAIL
1 REQ.



"E" DETAIL
1 REQ.

Property of:
 THE TECHNICAL MATERIEL CORPORATION
 MAMARONECK, NEW YORK

SYM	DESCRIPTION	DATE	CH. NO.	DRAFTS	CHECKER	ENG. APP.
UNLESS OTHERWISE SPECIFIED:						
DIMENSIONS ARE IN INCHES						
TOLERANCES ON FRACTIONS $\pm 1/64$ DECIMALS $\pm .05$ ANGLES $\pm 1/2^\circ$						
SCALE: DO NOT SCALE						
MAXIMUM ALLOWABLE TOLERANCES HAVE BEEN DETERMINED AND ANY DEVIATIONS WILL BE CAUSE FOR REJECTION. REMOVE ALL BURRS AND SHARP EDGES						

REQ. PER UNIT	MODEL	SECTION	ASSY. NO.	DATE
2	AFC-2			11-16-61
USED ON				

REQ.	ITEM	PART NO.	DESCRIPTION	SYMBOL
		.064	THE TECHNICAL MATERIEL CORP. MAMARONECK, NEW YORK	
		ALUMINUM	CHASSIS, ELECTRICAL	
			CRYSTAL OSC.	
	5052-H-32		DRAWN	FINAL APPROVAL
	S404 YEL. IRIDITE		CHECKER	
			ELEC. DES. APP.	MS-2759
			MECH. DES. APP.	