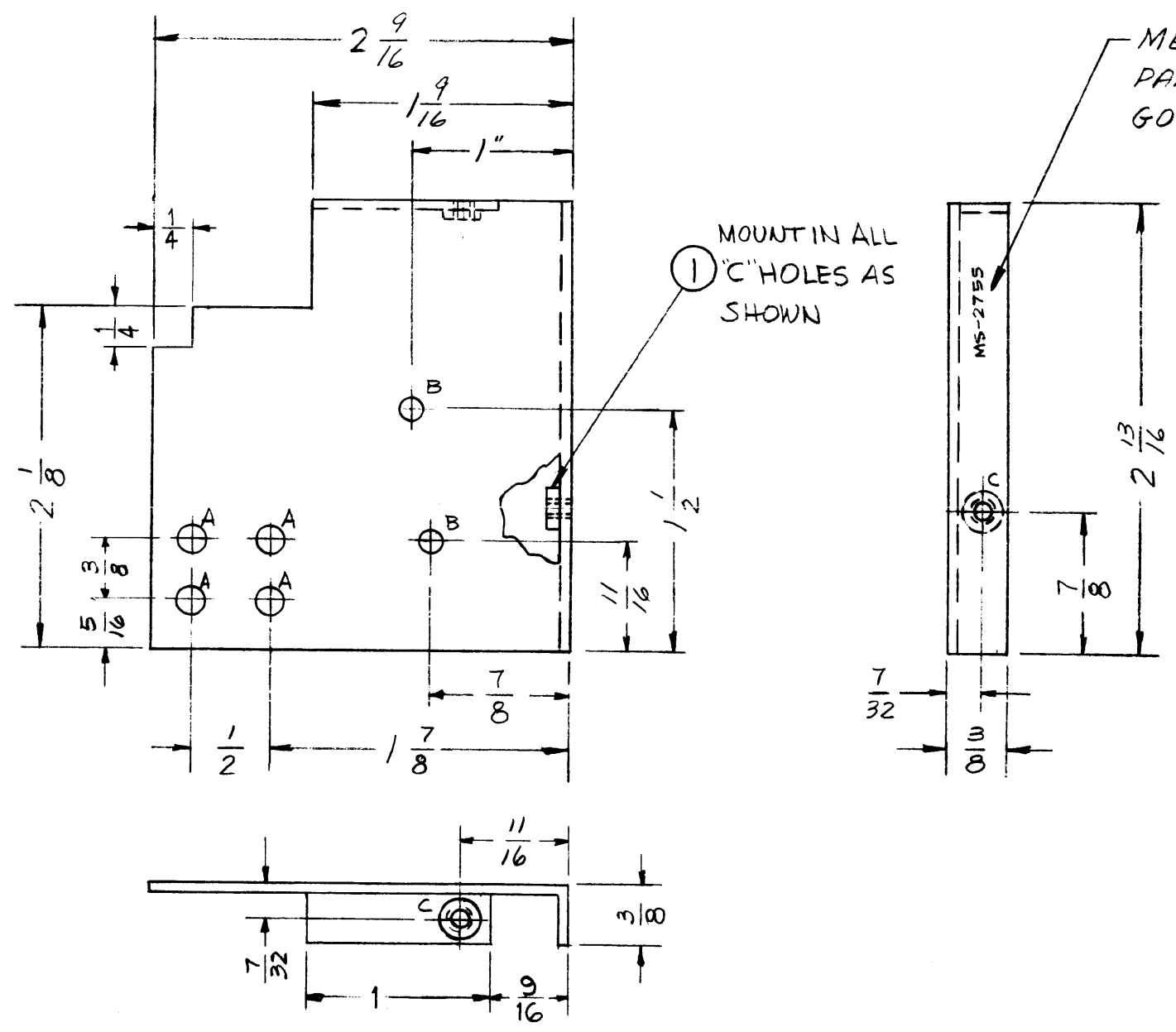


MS-2755 A



HOLES:
 A - .166 DIA. 4 REQ'D.
 B - 1/8 DIA. 2 REQ'D.
 C - .161-.164 DIA. 2 REQ'D.

PROPERTY OF THE TECHNICAL MATERIEL CORPORATION
 MAMARONECK, NEW YORK

SYM	DESCRIPTION	DATE	CH. NO.	DRAFTS	CHECKER	ENG. APP.
A	2 9/16 WAS 2 3/8, 1 9/16 WAS 1 3/8, 1 WAS 1 1/4	12/15/61	15401	F.V.V.	J.C.B.	W.N.K.

UNLESS OTHERWISE SPECIFIED:
 DIMENSIONS ARE IN INCHES
 TOLERANCES ON FRACTIONS ± 1/64 DECIMALS ± .005 ANGLES ± 1/20

SCALE: DO NOT SCALE
 MAXIMUM ALLOWABLE TOLERANCES HAVE BEEN DETERMINED AND ANY DEVIATIONS WILL BE CAUSE FOR REJECTION.
 REMOVE ALL BURRS AND SHARP EDGES

USE MATERIAL THICKNESS FOR MAX. RADIUS ON ALL BENDS UNLESS OTHERWISE SPECIFIED

MOUNT INSERTS AFTER FINISHING

REQ. PER UNIT	MODEL	SECTION	ASS'Y. NO.	DATE
1	SBS-1			11-14-61

REQ.	ITEM	PART NO.	DESCRIPTION	SYMBOL
2	1	NT-129-440-4	NUT, ROUND, SWAGE TYPE	C
		.051 THICK	THE TECHNICAL MATERIEL CORP. MAMARONECK, NEW YORK	
		ALUMINUM	SHIELD, BRACKET CONVERTER SECTION	
		5052-H32	ab	RUTZTO
		TYPE & TEMPER	HEAT TREAT. SPEC.	DRAWN
		S404-YEL. IRIDITE		J.P.D.
		FINISH & SPEC. NO.	ELEC. DES. APP.	MECH. DES. APP.
				MS-2755 A