

THE CONTENTS OF THIS DRAWING ARE THE EXCLUSIVE PROPERTY OF THE TECHNICAL MATERIEL CORP. ITS UNAUTHORIZED USE OR REPRODUCTION IN WHOLE OR IN PART IS STRICTLY FORBIDDEN.

REQ. PER UNIT

USED ON

MODEL

ASS'Y. NO.

DATE

1

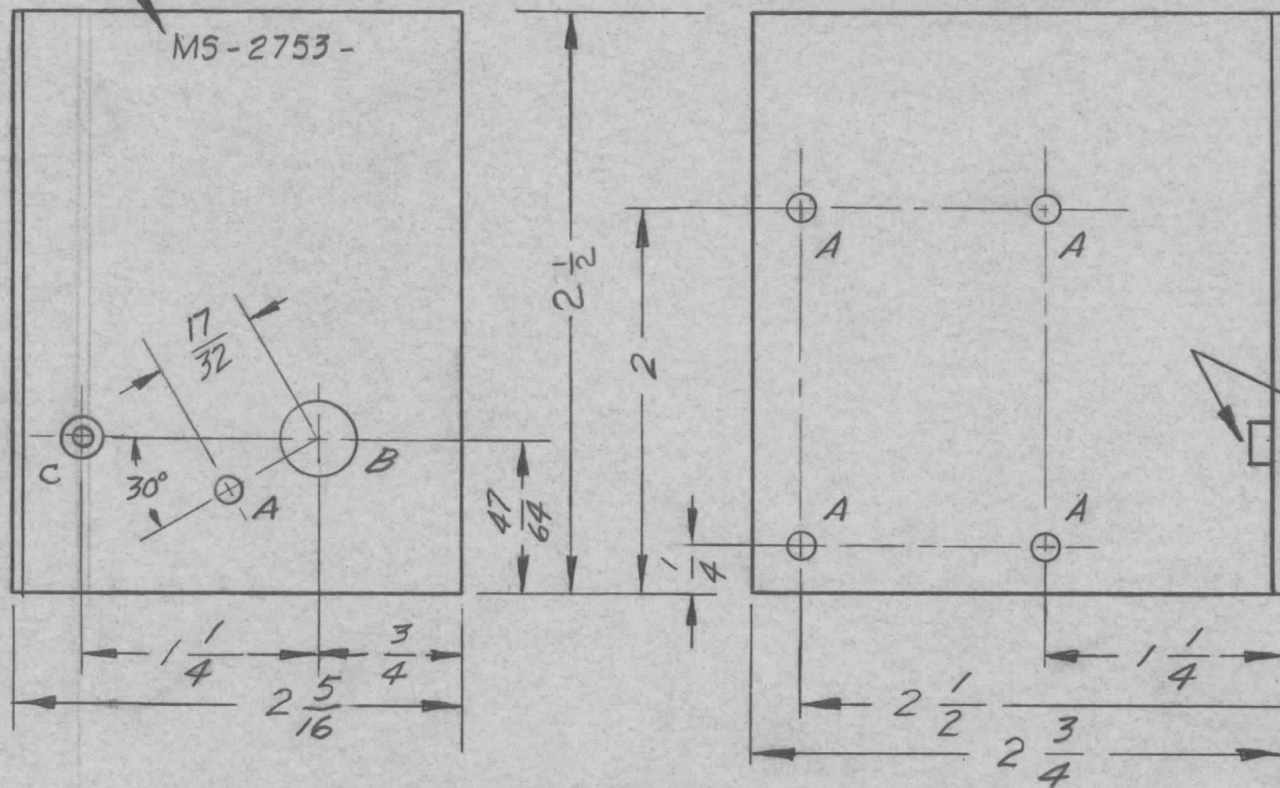
KIT-113

12-5-61

MS-2753

A

METAL STAMP TMC PART NO. WITH LATEST REVISION LETTER  $\frac{1}{8}$  HIGH GOTHIC AS SHOWN.



HOLE:

A- $\frac{1}{8}$  DIA. 5 REQ.

B- $\frac{3}{8}$  DIA. 1 REQ.

C-.191-.194 DIA. 1 REQ.

MOUNT ITEM 1 IN "C" HOLE AFTER FINISHING.

UNLESS OTHERWISE SPECIFIED DIMENSIONS ARE IN INCHES AND INCLUDE CHEMICALLY APPLIED OR PLATED FINISHES

DECIMALS	TOLERANCES	FRACTIONS
.X ± .05		± 1/64
.XX ± .01		ANGLES
.XXX ± .005		± 0° 30'

CUT HERE  
GUARANTEED  
2-66

1	1	NT-129-632-4	NUT, ROUND, SWAGE TYPE	C
REQ.	ITEM	PART NO.	DESCRIPTION	SYMBOL
		.081	THE TECHNICAL MATERIEL CORP.	
		ALUMINUM	MAMARONECK, NEW YORK	
A	2 1/2 WAS 3 (DIM)	7.6.64 11675	BRACKET SWITCH AND DECOUPLING MTG.	
SYM	DESCRIPTION	DATE	CH. NO.	DRAFTS
			CHECKER	ENG. APP.
UNLESS OTHERWISE SPECIFIED: DIMENSIONS ARE IN INCHES TOLERANCES ON		SCALE: DO NOT SCALE		
FRAC. ± 1/64 DEC. ± .005 ANGLES ± 1/2°		MAXIMUM ALLOWABLE TOLERANCES HAVE BEEN DETERMINED AND ANY DEVIATIONS WILL BE CAUSE FOR REJECTION. REMOVE ALL BURRS AND SHARP EDGES		
		5052-H32	wh	file
		TYPE & TEMPER	HEAT TREAT. SPEC.	DRAWN
		5404 YEL. IRIDITE	oa	aa
		FINISH & SPEC. NO.	ELEC. DES. APP.	MECH. DES. APP.
				MS-2753
				A