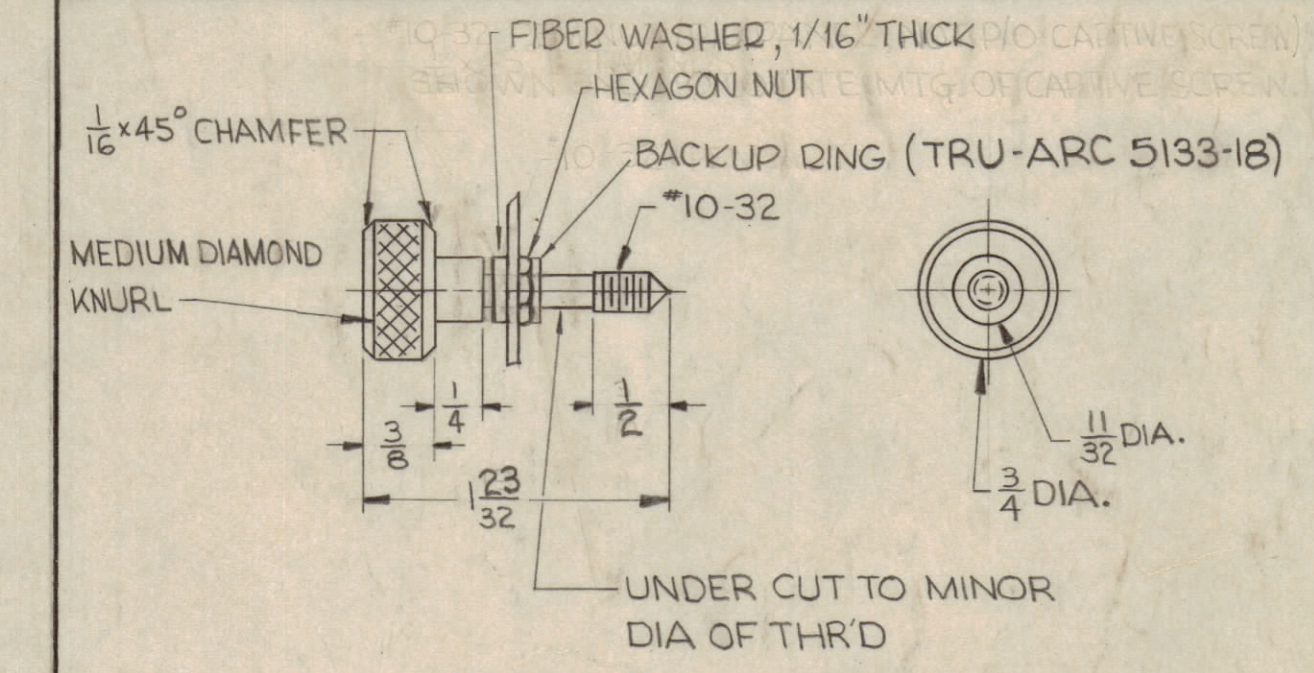
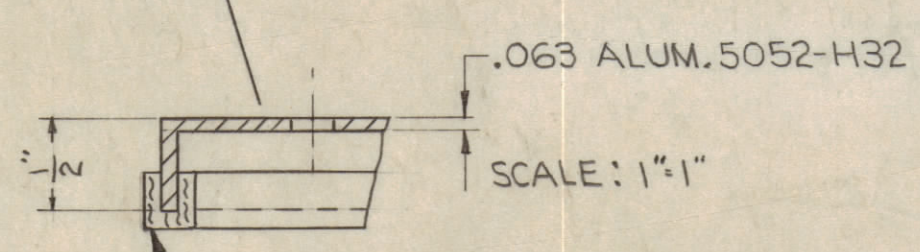
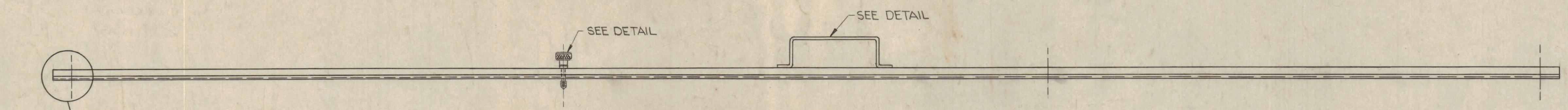


HANDLE
HANDLE TO BE TACK-WELDED
SECURELY TO PANEL .125 ALUM. 5052-H32
(2 REQ.)



CAPTIVE SCREW AND NUT DETAIL
(9 REQ.)

HOLE:
A - .203 DIA. 9 HOLES, FOR CAPTIVE SCREW



FINISH NOTE:
S404 IRIDITE
S114 ZINC CHROMATE
S520 BLUE-GRAY TEXT. PAINT

TOLERANCES	
DECIMALS ± .005	FRACTIONS ± 1/64
ANGLES ± .01	ANGLES ± .01

NOTICE TO PERSONS RECEIVING THIS DRAWING:
THE TECHNICAL MATERIEL CORPORATION claims proprietary right in the material disclosed herein. This drawing is issued in confidence for engineering information only and may not be reproduced or used to manufacture anything shown hereon without permission from THE TECHNICAL MATERIEL CORPORATION to the user. This drawing is loaned for mutual assistance and is subject to recall at any time.

Property of:
THE TECHNICAL MATERIEL CORPORATION
MAMARONECK, NEW YORK

SYM	ZONE	DESCRIPTION	DATE	CH. NO.	DRAFTS	CHECKER	ENG. APP.
D		ADDED SHEET 2 AND -2-3	10-9-70	00365	GE	RO	VEA
C		DIM. CHG. 10 3/16 TO 15 3/16, 14 3/16 TO 15 3/16	8-13-69	18319	GE	RO	FB
B		CHG'D 'A' HOLE LOC. DIM. FR. 15 3/16 TO 16 3/16	11-23-66	17311	RME	ST	OS
A		CREASE & FINISH NOTES ADD. 'A' WAS 5/16 DIA. 1" HOLE DELE., 2" Holes RELOC. TO 3/32 DIA. DIA.	5-7-64	11373	WB	ST	OS

UNLESS OTHERWISE SPECIFIED:	
DIMENSIONS ARE IN INCHES	SCALE 4"=1'-0"
TOLERANCES ON FRACTIONS ± 1/64	DECIMALS ± .005
ANGLES ± 1/2°	MAXIMUM ALLOWABLE TOLERANCES HAVE BEEN DETERMINED AND ANY DEVIATIONS WILL BE CAUSE FOR REJECTION. REMOVE ALL BURRS & SHARP EDGES

REQ. PER UNIT	MODEL	SECTION	ASS'Y. NO.	DATE
1	GPT-40KH	AX291		
1	GPT-10KZ	AX292		10-11-61

REQ. ITEM	PART NO.	DESCRIPTION	SYMBOL
	.063	ALUMINUM	
		THE TECHNICAL MATERIEL CORP. MAMARONECK, NEW YORK	
		PANEL REAR (POWER SUPPLY, MAIN FRAME)	
	5052-H32		
		TYPE & TEMPER	
		HEAT TREAT. SPEC.	
		FINISH & SPEC. NO.	

MS-2748 D

A

MS-2748 D

