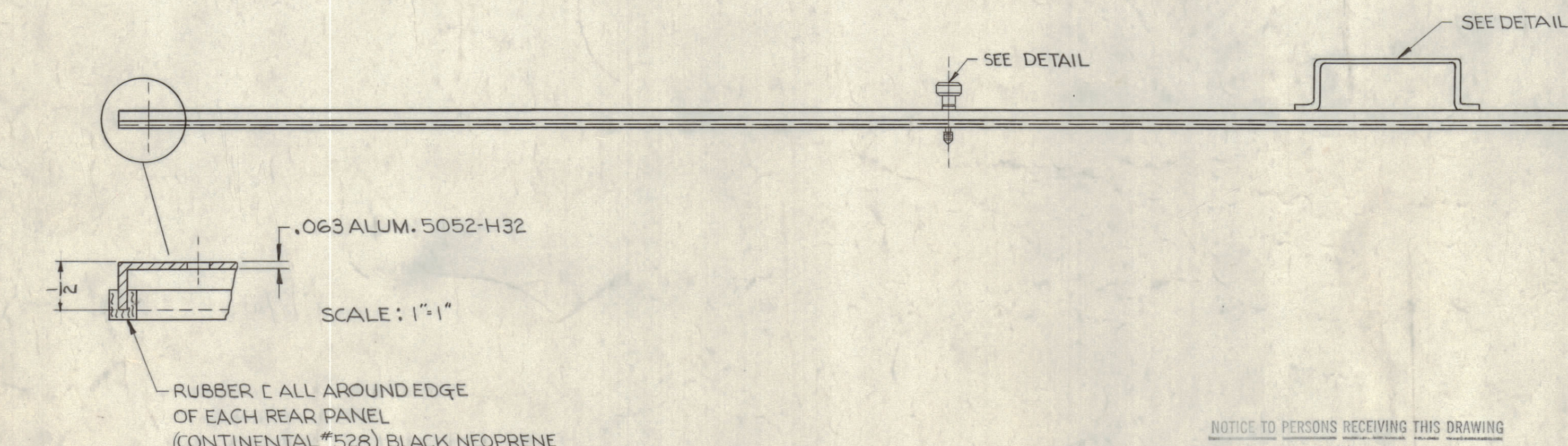


HOLE: A-.203 DIA. 9 HOLES FOR CAPTIVE SCREW

ALL CORNERS ARE WELDED AND GROUND SMOOTH  
 CREASE UP

FLATTEN THIS AREA APPROX. 6" DIA.



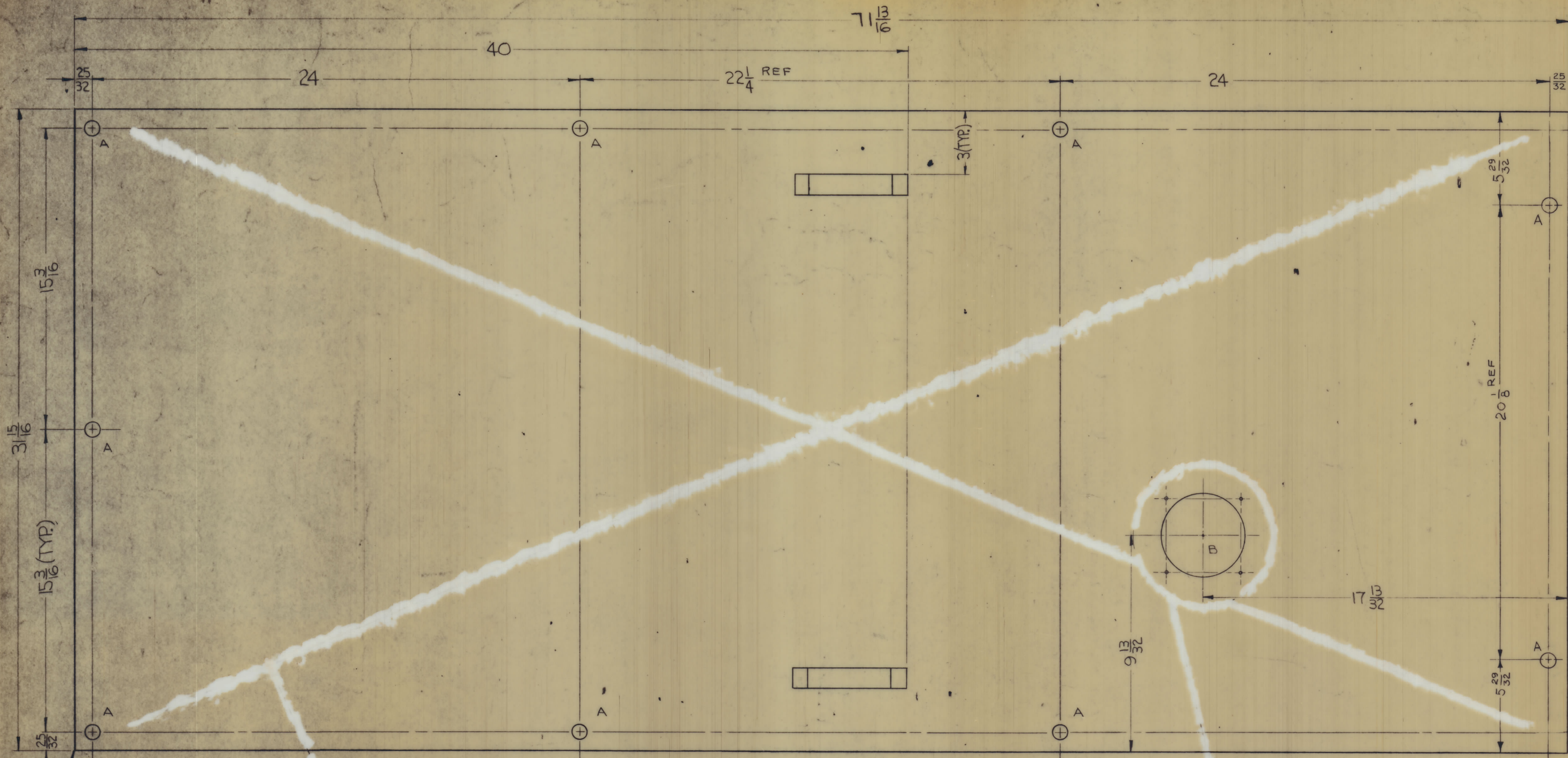
FINISH NOTE:  
 S404 IRIDITE  
 S114 ZINC CHROMATE PRIMER  
 S520 BLUE-GRAY TEXT. PAINT

NOTICE TO PERSONS RECEIVING THIS DRAWING  
 THE TECHNICAL MATERIEL CORPORATION claims proprietary right in the material disclosed herein. This drawing is issued in confidence for engineering information only and may not be reproduced or used to manufacture anything shown herein without permission from THE TECHNICAL MATERIEL CORPORATION to the user. This drawing is loaned for mutual assistance and is subject to recall at any time.  
 Property of:  
 THE TECHNICAL MATERIEL CORPORATION  
 MAMARONECK, NEW YORK

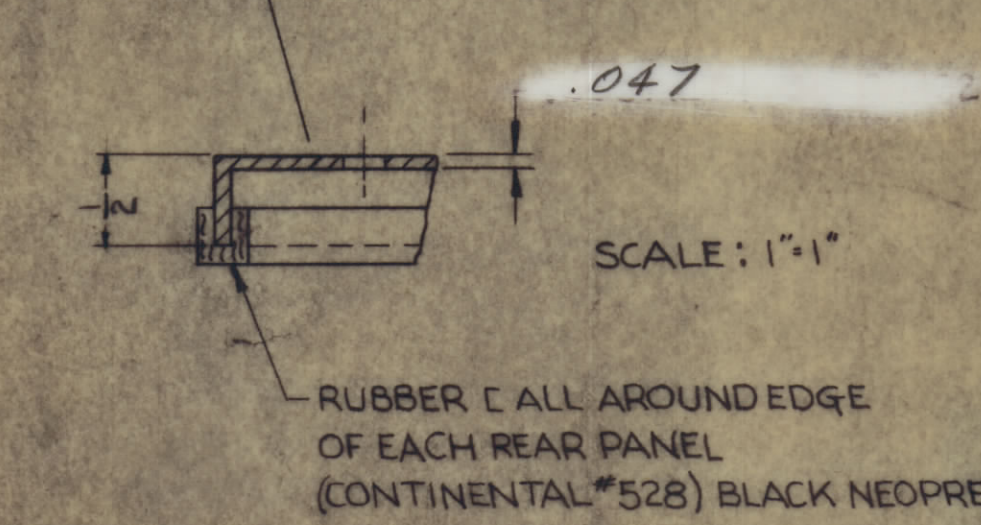
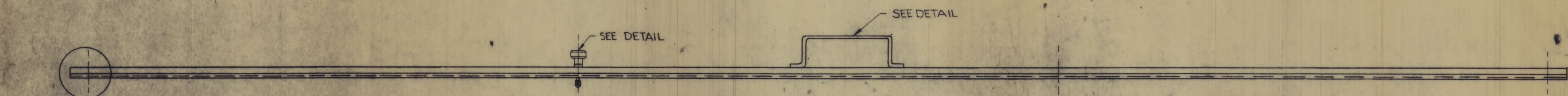
SYM	ZONE	DESCRIPTION	DATE	CH. NO.	DRAFTS	CHECKER	ENG. APP.
A	~	ADDED SURF 2x	11/30	80363	GE	MC	3/28
B	~	CREASE, FLATTEN & FINISH NOTES ADDED. 1" X HOLE DELE. 2" X HOLES RELOC. "A" WAS 3/16 DIA.	5.6.64	11373	JB	MC	3/28
UNLESS OTHERWISE SPECIFIED:		SCALE 4" = 1'-0"					
DIMENSIONS ARE IN INCHES		MAXIMUM ALLOWABLE TOLERANCES HAVE BEEN DETERMINED AND ANY DEVIATIONS WILL BE CAUSE FOR REJECTION. REMOVE ALL BURRS & SHARP EDGES					
TOLERANCES ON FRACTIONS ± 1/64		DECIMALS ± .005		ANGLES ± 1/2°		A	

REQ. PER UNIT	MODEL	SECTION	ASSY. NO.	DATE	FINISH & SPEC. NO.	ELEC. DES. APP.	MECH. DES. APP.	SHEET	OF
1	GPT40KH	AX291		10-12-61				MS-2747	B

MS-2747 B

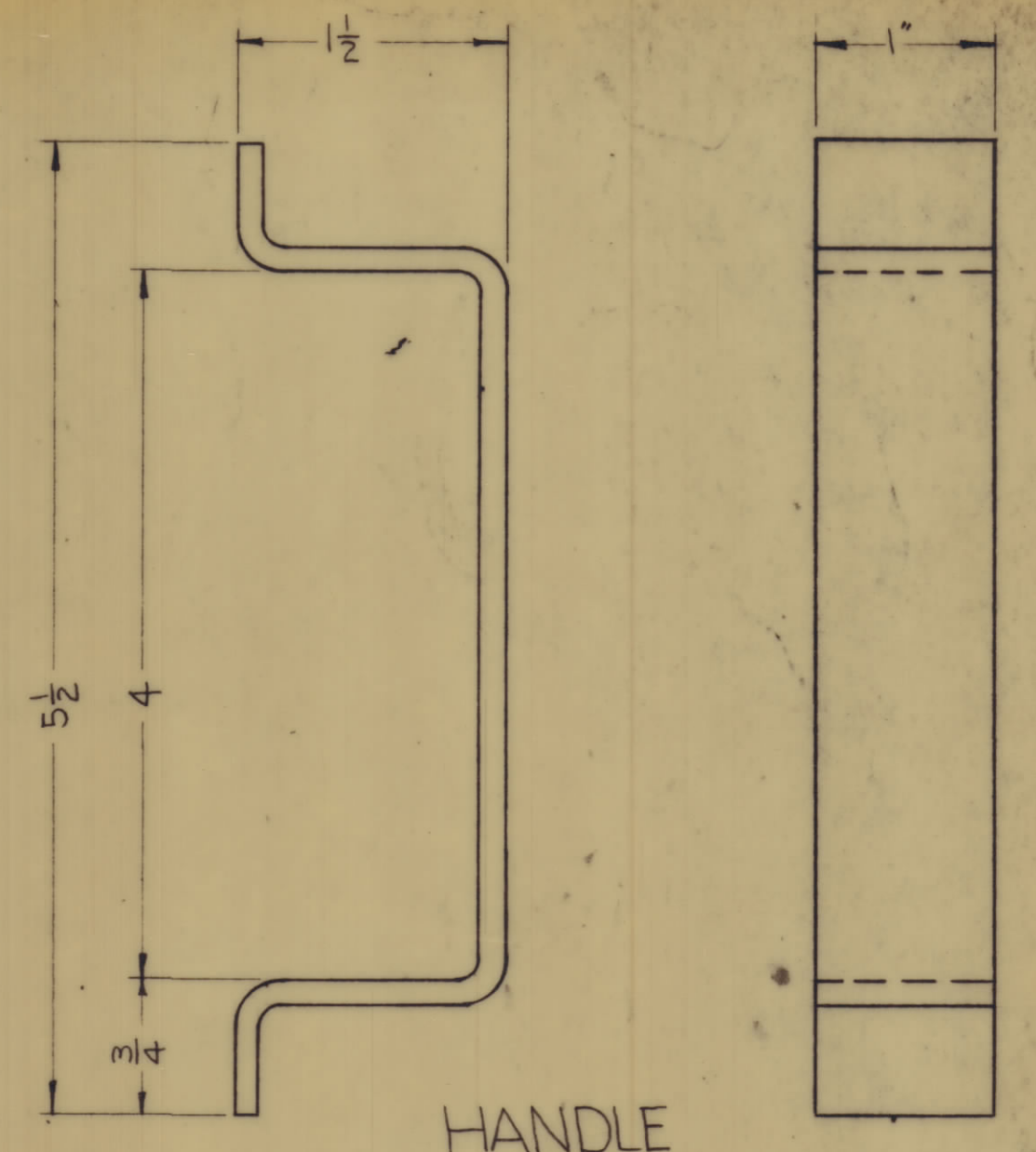


ALL CORNERS ARE WELDED AND GROUND SMOOTH

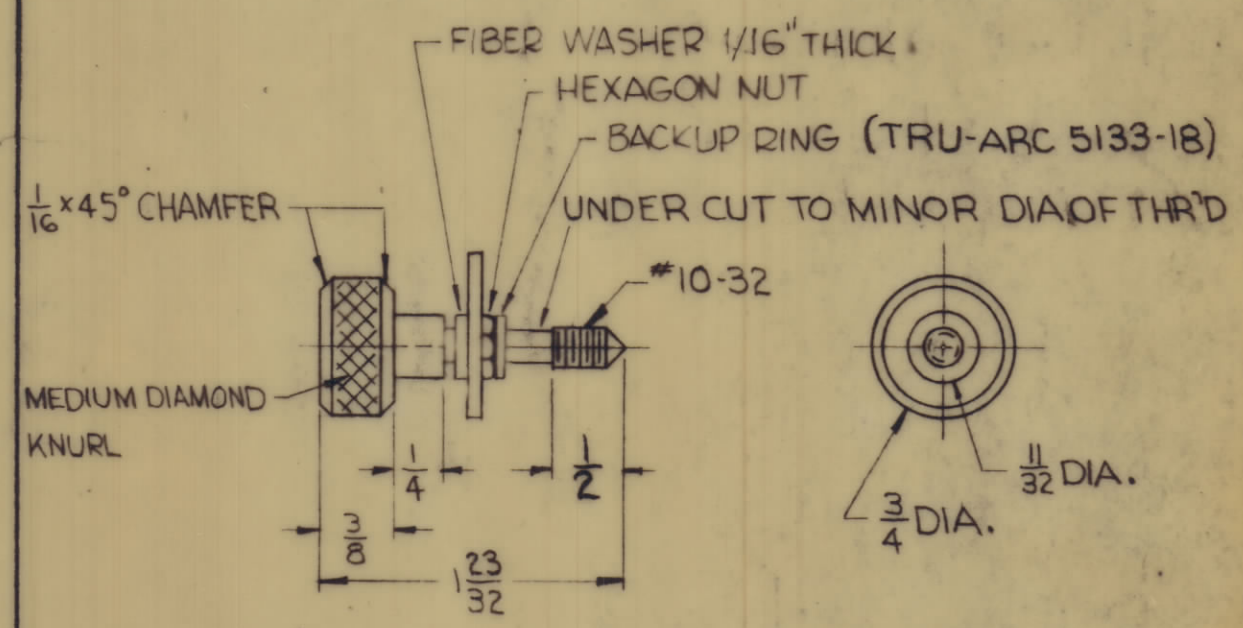


NOTICE TO PERSONS RECEIVING THIS DRAWING  
 THE TECHNICAL MATERIEL CORPORATION claims proprietary right in the material disclosed herein. This drawing is issued in confidence for engineering information only and may not be reproduced or used to manufacture anything shown herein without permission from THE TECHNICAL MATERIEL CORPORATION to the user. This drawing is loaned for mutual assistance and is subject to recall at any time.  
 Property of:  
 THE TECHNICAL MATERIEL CORPORATION  
 MAMARONECK, NEW YORK

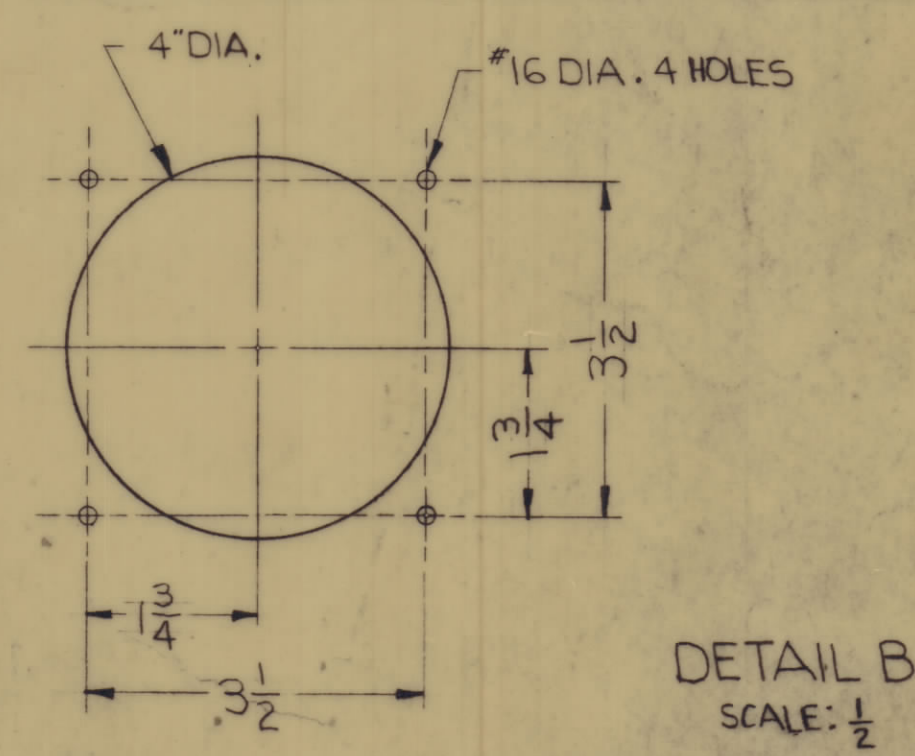
FINISH NOTE:  
 S404 IRIDITE  
 S114 ZINC CHROMATE PRIMER  
 S520 BLUE-GRAY TEXT. PAINT



HANDLE TO BE TACK-WELDED SECURELY TO PANEL. .125 ALUM. 5052-H32 (2 REQ.)



CAPTIVE SCREW AND NUT DETAIL (3 REQ.)



HOLE:  
 A-.203 DIA. 9 HOLES FOR CAPTIVE SCREW

B	ADDED SHEET 2 1/2 - 2	11/9/70	20363	SE	ME	RE	
A	CREASE PLATTEN & FINISH NOTES ADDED. 1/4" HOLE DIA. 2" HOLES REL. DC. * N WAS 3/16 DIA.	5.6.64	11373	MB	ME	RE	
SYM	ZONE	DESCRIPTION	DATE	CH. NO.	DRAFTS	CHECKER	ENG. APP.
UNLESS OTHERWISE SPECIFIED:			SCALE 4" = 1'-0"				
DIMENSIONS ARE IN INCHES			MAXIMUM ALLOWABLE TOLERANCES HAVE BEEN DETERMINED AND ANY DEVIATIONS WILL BE CAUSE FOR REJECTION. REMOVE ALL BURRS & SHARP EDGES				
TOLERANCES ON FRACTIONS ± 1/64			DECIMALS ± .005			ANGLES ± 1/2°	

1	GPT-40K	KIT364				
1	GPT40KH	AX291			10-12-61	
REQ. PER UNIT	MODEL	SECTION	ASSY. NO.	DATE	USED ON:	

REQ. ITEM	PART NO.	DESCRIPTION	SYMBOL
	18 GA	THE TECHNICAL MATERIEL CORP. MAMARONECK, NEW YORK	
	CRS	PANEL REAR (POWER AMPL)	
		MATERIAL	
		TYPE & TEMPER	
		HEAT TREAT. SPEC.	
		FINISH & SPEC. NO.	
		ELEC. DES. APP.	
		MECH. DES. APP.	
		SHEET 2 OF 2	

MS-2747 B