

THE CONTENTS OF THIS DRAWING ARE THE EXCLUSIVE PROPERTY OF THE TECHNICAL MATERIEL CORP. ITS UNAUTHORIZED USE OR REPRODUCTION IN WHOLE OR IN PART IS STRICTLY FORBIDDEN.

REQ. PER UNIT

USED ON

MODEL

ASS'Y. NO.

DATE

1

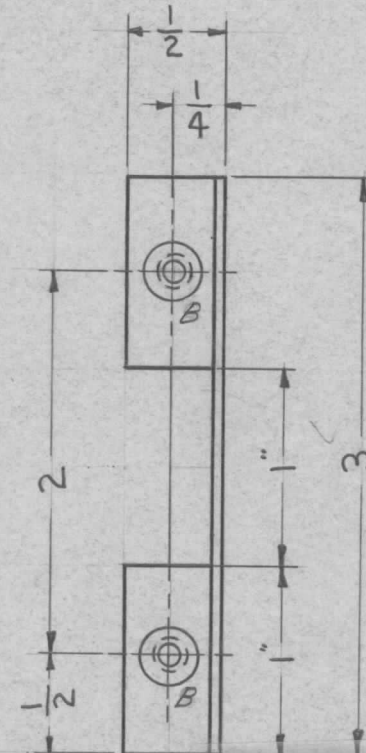
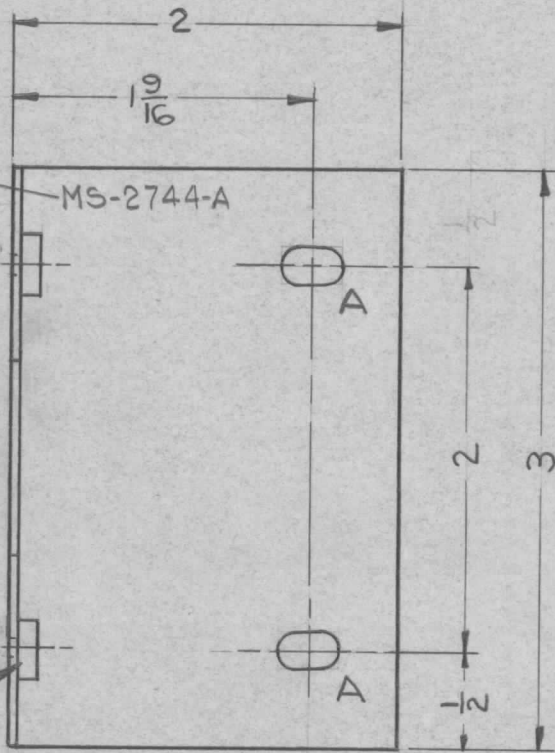
TER 250/300U

A-2225

11-4-61

MS-2744 A

METAL STAMP
TMC PART 1/8
HIGH GOTHIC
AS SHOWN



HOLES:
A - $\frac{3}{16} \times \frac{5}{16}$ SLOT 2 REQ.
B - .221-.224 DIA. 2 REQ.
C - NT-129-832-4 2 REQ.

MOUNT ITEM 1 IN ALL "B" HOLES AFTER FINISHING.

UNLESS OTHERWISE SPECIFIED
DIMENSIONS ARE IN INCHES AND INCLUDE
CHEMICALLY APPLIED OR PLATED FINISHES

DECIMALS	TOLERANCES	FRACTIONS
.X ± .05		± 1/64
.XX ± .01		ANGLES ± 0° 30'
.XXX ± .005		

CUT HERE
GUARANTEED
2-66

2	1	NT-129-832-4	NUT, ROUND, SWAGE			B
REQ.	ITEM	PART NO.	DESCRIPTION			SYMBOL
		.064	THE TECHNICAL MATERIEL CORP.			
		STOCK SIZE	MAMARONECK, NEW YORK			
A	STOCK SIZE WAS .062	11-27-61	5942	G.D.L.	...	BRACKET, INSULATOR SUPPORT
SYM	DESCRIPTION	DATE	CH. NO.	DRAFTS	CHECKER	ENG. APP.
UNLESS OTHERWISE SPECIFIED: DIMENSIONS ARE IN INCHES TOLERANCES ON FRAC. ± 1/64 DEC. ± .005 ANGLES ± 1/2°		SCALE: 1" = 1"		MAXIMUM ALLOWABLE TOLERANCES HAVE BEEN DETERMINED AND ANY DEVIATIONS WILL BE CAUSE FOR REJECTION. REMOVE ALL BURRS AND SHARP EDGES		
		5052-H32		R. Juchin	JHQ	203
		TYPE & TEMPER	HEAT TREAT. SPEC.	DRAWN	CHECKED	FINAL APPROVAL
		S-404 YEL. IRIDITE		aa		MS-2744 A
		FINISH & SPEC. NO.	ELEC. DES. APP.	MECH. DES. APP.		