

- A ~ 3/16 DIA. HOLE'S 7 REQ.
- B ~ .128 DIA. 3 "
- C ~ 1/2 DIA. 2 "

ISSUED TO PERSONS RECEIVING THIS DRAWING

THE TECHNICAL MATERIEL CORPORATION claims proprietary right in the material disclosed herein. This drawing is issued in confidence for engineering information only and may not be reproduced or used to manufacture anything shown hereon without permission from THE TECHNICAL MATERIEL CORPORATION to the user. This drawing is loaned for mutual assistance and is subject to recall at any time.

Property of:  
THE TECHNICAL MATERIEL CORPORATION  
MAMARONECK, NEW YORK

NOTE: Use Material Thickness For Max. Radius on All Bends, unless otherwise Specified.

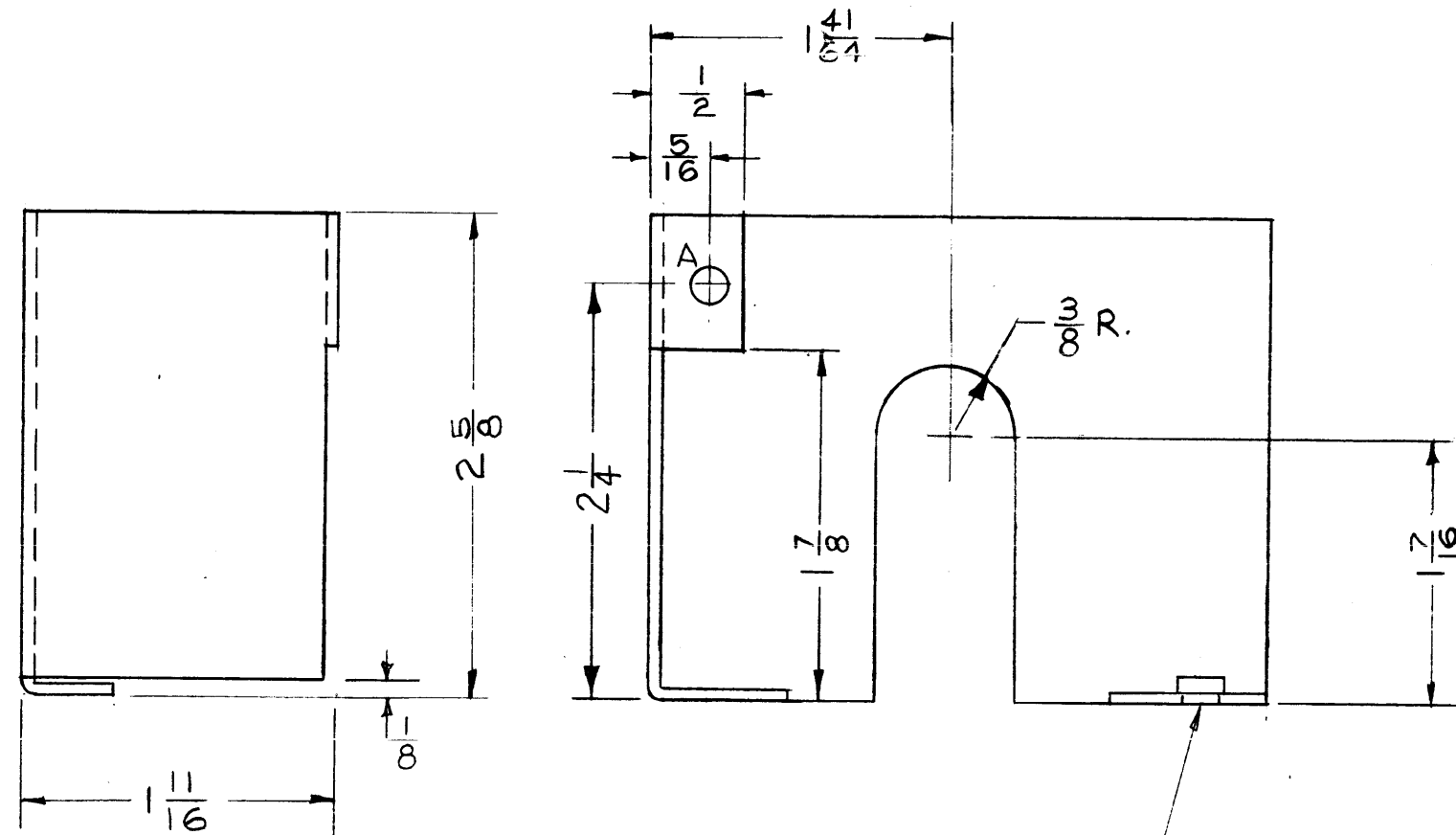
1775-14

NOTE: PERFORATION .072 HOLES ON 1/8 CENTERS

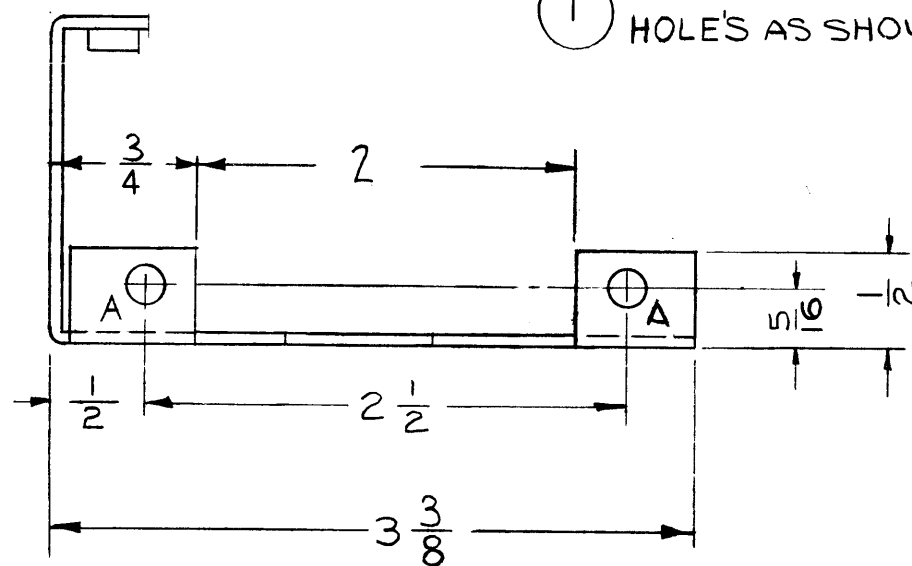
C	1	BLANK SIZE REF: MS-1775-14, DELETED	4-25-63	8912	JAG	JLH	JLH
B	2	TWO "C" HOLES ADDED	12-14-60	2415	M.A.F.	JCS	JLH
A	1	THREE "B" HOLES ADDED	10/12/60	3154	JLH	JLH	JLH
		HOLES RELOCATED LIP ADDED					
ISSUE	ITEM	CHANGED FROM	DATE	CH. NO.	DRAFTS	CHECKER	ENG. APP.
TOLERANCES		SCALE:					
DEC. DIM. ±		MAXIMUM ALLOWABLE TOLERANCES HAVE BEEN DETERMINED AND ANY DEVIATIONS WILL BE CAUSE FOR REJECTION.					
FRAC. DIM. ± 1/64		REMOVE ALL BURRS AND SHARP EDGES					
ANGULAR DIM. ±							

1	CHG-1			9-13-60
REQ. PER UNIT	MODEL	PROJECT NO.	ASS'Y. NO.	DATE
USED ON				

REQ. ITEM	PART NO.	DESCRIPTION	SYMBOL
	.051	THE TECHNICAL MATERIEL CORP.	
	STOCK SIZE	MAMARONECK, NEW YORK	
	ALUMINUM (SEE NOTE)	R.F. DECK TOP COVER	
	MATERIAL		
5052-H32			
TYPE & TEMPER	HEAT TREAT. SPEC.	DRAWN	CHECKED
S-404 YELLOW IRIDITE			
FINISH & SPEC. NO.	ELEC. DES. APP.	MECH. DES. APP.	
			MS-2415 C



A ~ .191 DIA. HOLES 3 REQ.  
(FOR NT-129-632-4)



**NOTICE TO PERSONS RECEIVING THIS DRAWING**

THE TECHNICAL MATERIEL CORPORATION claims proprietary right in the material disclosed hereon. This drawing is issued in confidence for engineering information only and may not be reproduced or used to manufacture anything shown hereon without permission from THE TECHNICAL MATERIEL CORPORATION to the user. This drawing is loaned for mutual assistance and is subject to recall at any time.

Property of:  
THE TECHNICAL MATERIEL CORPORATION  
MAMARONECK, NEW YORK

C	2	1/8" NOTCH ADDED (TOP VIEW)	2-28-61	4291	RU	JCS	JCS
	1	DIM 2 WDS 1 3/4 (BOTTOM VIEW)					
B	2	1 3/4 NOTCH ADDED	1-4-61	3854	M.A.F.	JCS	JCS
	1	ONE "A" HOLE DELETED					
A	3	3/8 R. WAS 3/4 D. IN ERROR	12-20-60	3745	M.A.F.	JCS	JCS
	2	O/A DIM. 3 3/8 WAS 3 1/2					
	1	LIP DELETED					

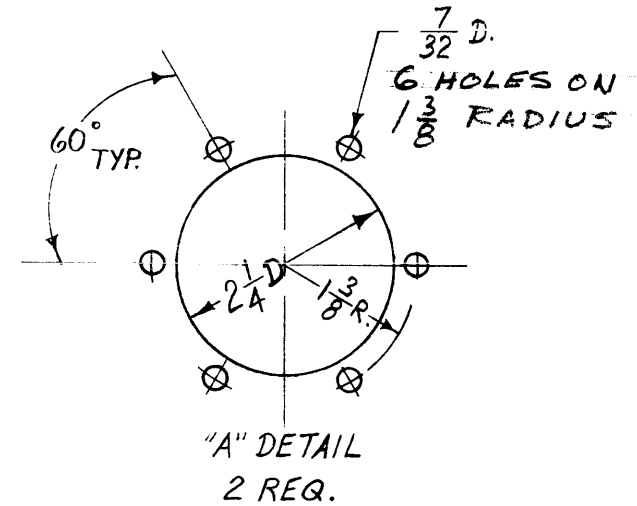
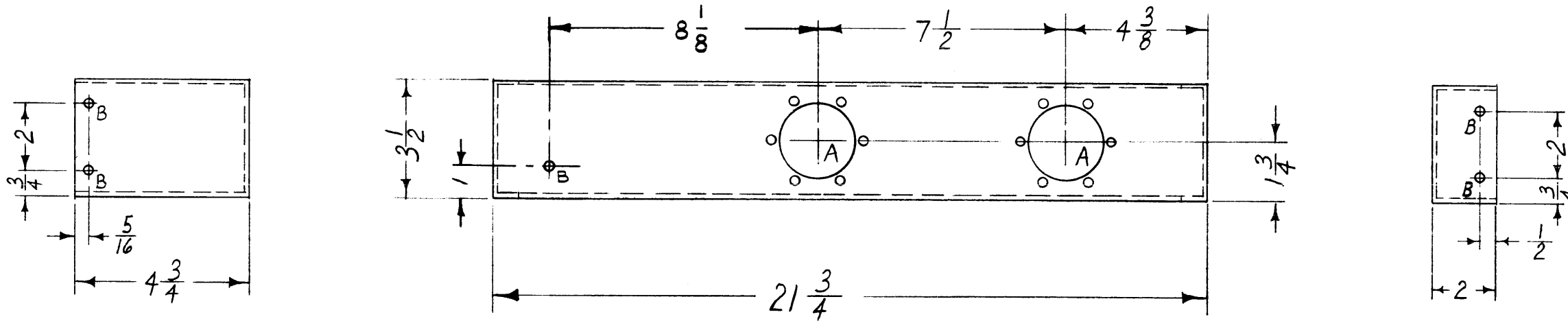
ISSUE		ITEM	CHANGED FROM	DATE	CH. NO.	DRAFTS	CHECKER	ENG. APP.
TOLERANCES				SCALE: FULL				
DEC. DIM. ±				MAXIMUM ALLOWABLE TOLERANCES HAVE BEEN DETERMINED AND ANY DEVIATIONS WILL BE CAUSE FOR REJECTION.				
FRAC. DIM. ± 1/64				REMOVE ALL BURRS AND SHARP EDGES				
ANGULAR DIM. ±								

1	CHG-1			9-28-60
REQ. PER UNIT	MODEL	PROJECT NO.	ASS'Y. NO.	DATE
USED ON				

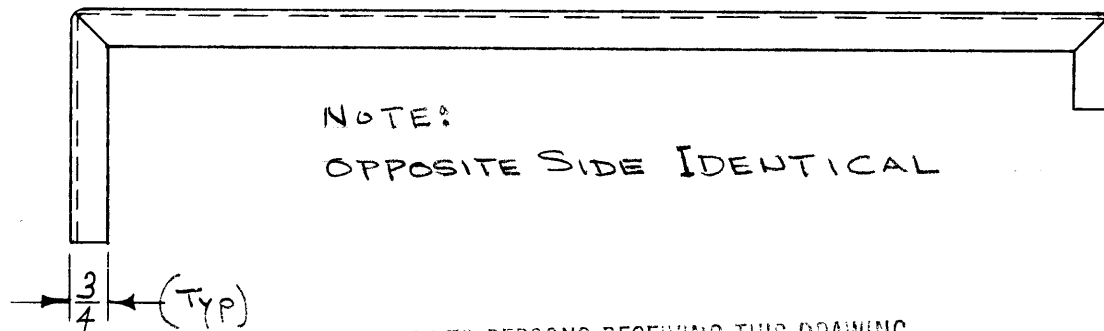
3	1	NT-129-632-4	NUT ROUND SWAGE TYPE	
REQ. ITEM	PART NO.		DESCRIPTION	
	.064		THE TECHNICAL MATERIEL CORP. MAMARONECK, NEW YORK	
STOCK SIZE			REAR SHIELD, BOTTOM	
MATERIAL				
ALUMINUM				
5052-H32			AS	JCS
TYPE & TEMPER		HEAT TREAT. SPEC.	DRAWN	CHECKED
S-404 YELLOW IRDITE			JCS	JCS
FINISH & SPEC. NO.			ELEC. DES. APP.	MECH. DES. APP.
				MS-2419 C

MS-2423

A- SEE DETAIL 2 REQ.  
B-  $\frac{3}{16}$  DIA. 5 REQ.



NOTE:  
OPPOSITE SIDE IDENTICAL



NOTICE TO PERSONS RECEIVING THIS DRAWING

THE TECHNICAL MATERIEL CORPORATION claims proprietary right in the material disclosed hereon. This drawing is issued in confidence for engineering information only and may not be reproduced or used to manufacture anything shown hereon without permission from THE TECHNICAL MATERIEL CORPORATION to the user. This drawing is loaned for mutual assistance and is subject to recall at any time.

Property of:  
THE TECHNICAL MATERIEL CORPORATION  
MAMARONECK, NEW YORK

USE MATERIAL THICKNESS FOR MAX RADIUS  
ON ALL BENDS UNLESS OTHERWISE SPECIFIED

REF: LD-902 (1)

ISSUE	ITEM	CHANGED FROM	DATE	CH. NO.	DRAFTS	CHECKER	ENG. APP.
TOLERANCES			SCALE: $\frac{1}{1}$				
DEC. DIM. $\pm$			MAXIMUM ALLOWABLE TOLERANCES HAVE BEEN DETERMINED AND ANY DEVIATIONS WILL BE CAUSE FOR REJECTION. REMOVE ALL BURRS AND SHARP EDGES				
FRAC. DIM. $\pm$ $\frac{1}{64}$							
ANGULAR DIM. $\pm$							

REQ. PER UNIT	MODEL	PROJECT NO.	ASS'Y. NO.	DATE
1	ACU			9-16-60
USED ON				

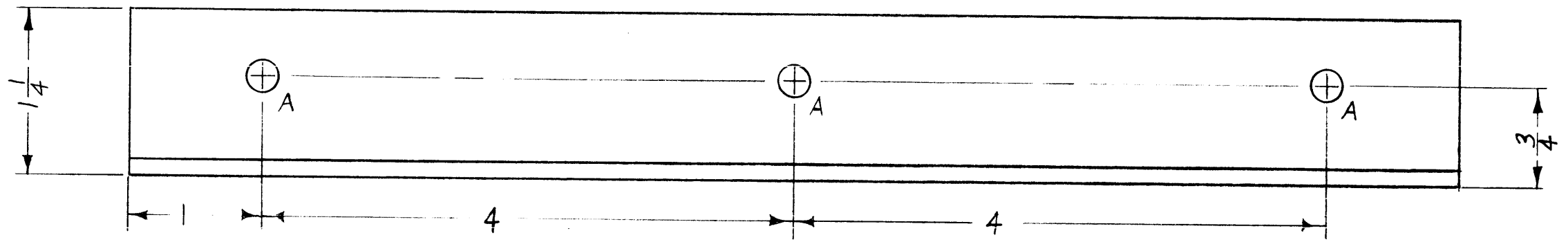
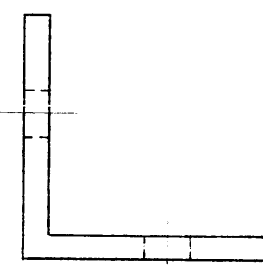
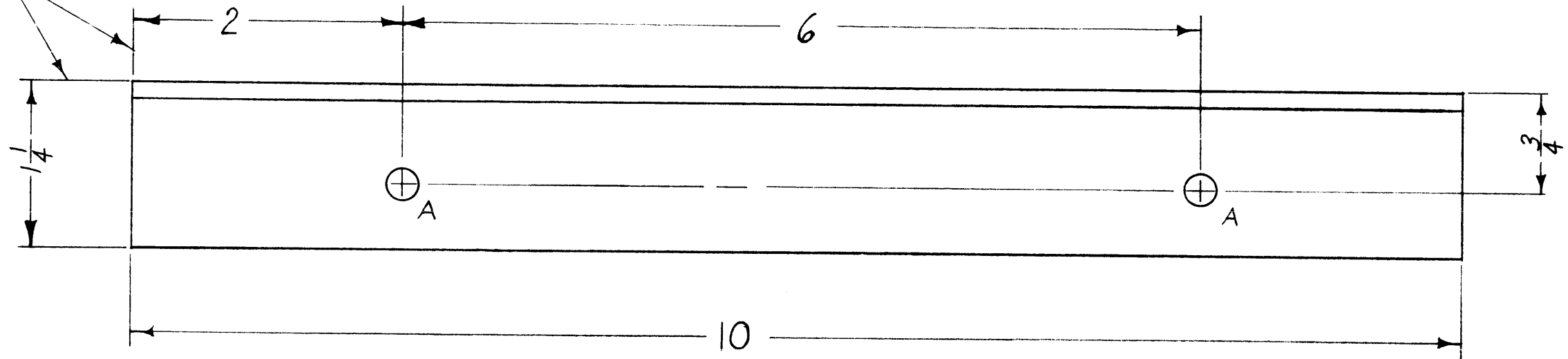
REQ. ITEM	PART NO.	DESCRIPTION	SYMBOL
	1/8	THE TECHNICAL MATERIEL CORP. MAMARONECK, NEW YORK	
	ALUMINUM	SUPPORT CAPACITOR	
	5052-H32		
TYPE & TEMPER	HEAT TREAT. SPEC.	DRAWN	CHECKED
	S404 YELL. IRIDITE		
FINISH & SPEC. NO.	ELEC. DES. APP.	MECH. DES. APP.	
			MS-2423

MS-2424

LOCATING BASE LINE.

A ~ 7/32 DIA.

5 REQ.



NOTICE TO PERSONS RECEIVING THIS DRAWING

THE TECHNICAL MATERIEL CORPORATION claims proprietary right in the material disclosed hereon. This drawing is issued in confidence for engineering information only and may not be reproduced or used to manufacture anything shown hereon without permission from THE TECHNICAL MATERIEL CORPORATION to the user. This drawing is loaned for mutual assistance and is subject to recall at any time.

Property of:  
THE TECHNICAL MATERIEL CORPORATION  
MAMARONECK, NEW YORK

ISSUE	ITEM	CHANGED FROM	DATE	CH. NO.	DRAFTS	CHECKER	ENG. APP.
TOLERANCES			SCALE: FULL				
DEC. DIM. ±			MAXIMUM ALLOWABLE TOLERANCES HAVE BEEN DETERMINED AND ANY DEVIATIONS WILL BE CAUSE FOR REJECTION.				
FRAC. DIM. ± 1/16			REMOVE ALL BURRS AND SHARP EDGES				
ANGULAR DIM. ±							

2	ACU			9-23-60
REQ. PER UNIT	MODEL	PROJECT NO.	ASS'Y. NO.	DATE
USED ON				

REQ. ITEM	PART NO.	DESCRIPTION	SYMBOL
	1/8 x 1/4 x 1/4	THE TECHNICAL MATERIEL CORP.	
	STOCK SIZE	MAMARONECK, NEW YORK	
	ALUMINUM	BRACKET, COIL ASS'Y MTG.	
	MATERIAL		
5052-H32			
TYPE & TEMPER	HEAT TREAT. SPEC.	DRAWN	CHECKED
5404 YELL. IRIDITE			
FINISH & SPEC. NO.	ELEC. DES. APP.	MECH. DES. APP.	
			MS-2424

MS-2432

HOLES ~

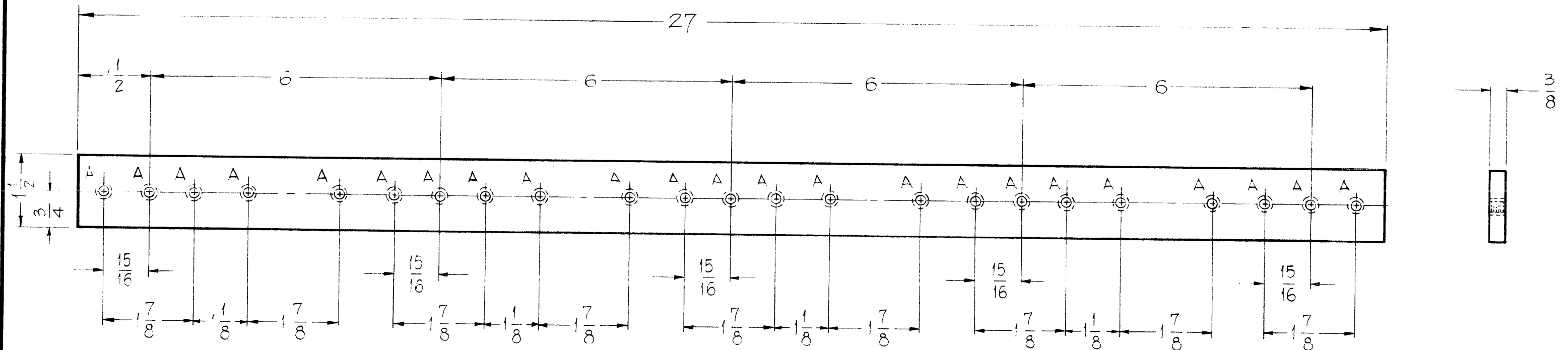
A ~ DRILL & TAP  $\frac{1}{4}$  - 20, THRU

23 Req.

FOR ALL PERSONS RECEIVING THIS DRAWING

THE TECHNICAL MATERIEL CORPORATION claims proprietary right in the material disclosed hereon. This Drawing is issued in confidence for engineering information only and may not be reproduced or used to manufacture anything shown hereon without permission from THE TECHNICAL MATERIEL CORPORATION to the user. This drawing is loaned for mutual assistance and is subject to recall at any time.

Property of:  
THE TECHNICAL MATERIEL CORPORATION  
MAMARONECK, NEW YORK



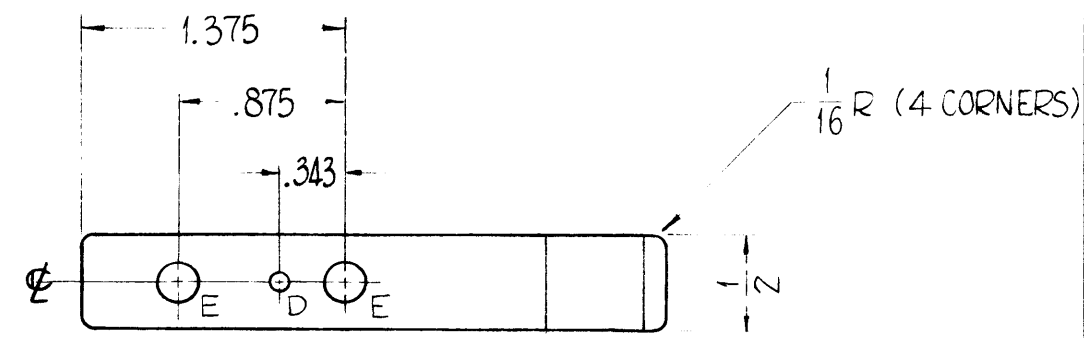
ISSUE	ITEM	CHANGED FROM	DATE	CH. NO.	DRAFTS	CHECKER	ENG. APP.
φ		ORIGINAL RELEASE	9/2/64			W	
TOLERANCES		SCALE: 1/2 ~ DO NOT SCALE ~					
DEC. DIM. ±		MAXIMUM ALLOWABLE TOLERANCES HAVE BEEN DETERMINED AND ANY DEVIATIONS WILL BE CAUSE FOR REJECTION. REMOVE ALL BURRS AND SHARP EDGES					
FRAC. DIM. ± 1/64							
ANGULAR DIM. ±							

REQ PER UNIT	MODEL	PROJECT NO.	ASS'Y. NO.	DATE
1	QDP-6517			9 - 21 - 60
USED ON				

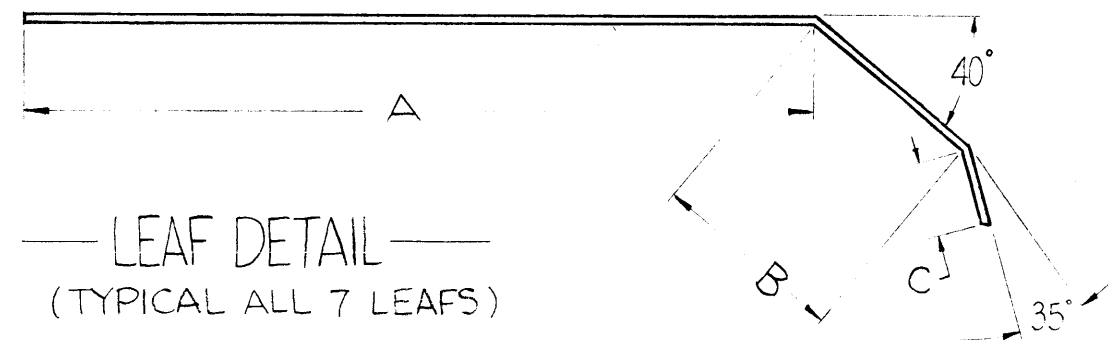
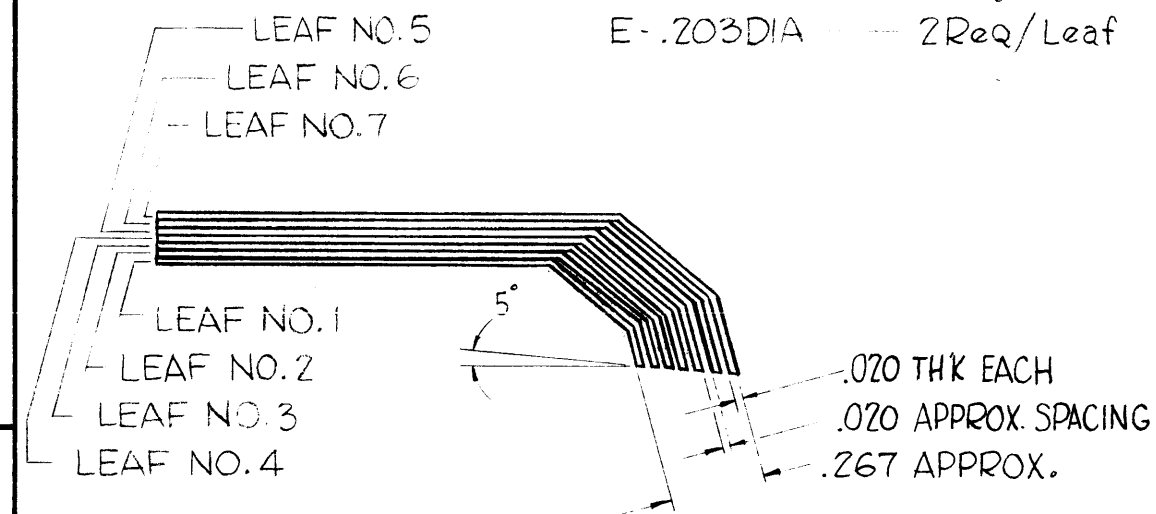
REQ. ITEM	PART NO.	DESCRIPTION	SYMBOL
	3/8 THICK	THE TECHNICAL MATERIEL CORP. MAMARONECK, NEW YORK	
	STOCK SIZE		
	ALUMINUM	BAR, CABLE SUPPORT	
MATERIAL			
2024-T3		J.C. Biele	SPM 9/2/64
TYPE & TEMPER	HEAT TREAT. SPEC.	DRAWN	CHECKED
S404-IRIDITE			FINAL APPROVAL
FINISH & SPEC. NO.		ELEC. DES. APP.	MECH. DES. APP.
		MS-2432 φ	

	TMC NO.	LEAF NO.	DIM. "A"	DIM. "B"	DIM. "C"	QUAN. 40K
MS-2445	MS-2445-1	1	2.063	.500	.187	8
	MS-2445-2	2	2.094	.500	.218	8
	MS-2445-3	3	2.125	.500	.250	8
	MS-2445-4	4	2.156	.500	.281	8
	MS-2445-5	5	2.187	.500	.312	8
	MS-2445-6	6	2.218	.500	.343	8
	MS-2445-7	7	2.249	.500	.374	8

NOTES:  
 HEAT TREATMENT - AFTER BENDING AND MACHINING LEAFS (MS-2445-1 THRU-7),  
 PUT IN CLOSED OVEN AT 600°F FOR 2 HOURS, BEFORE FINISHING.  
 FINISH - SILVER PLATE .0005, RHODIUM PLATE .000025.



HOLES  
 D-.109 DIA. 1 Req/Leaf  
 E-.203 DIA. 2 Req/Leaf



LOAN TO PERSONS RECEIVING THIS DRAWING

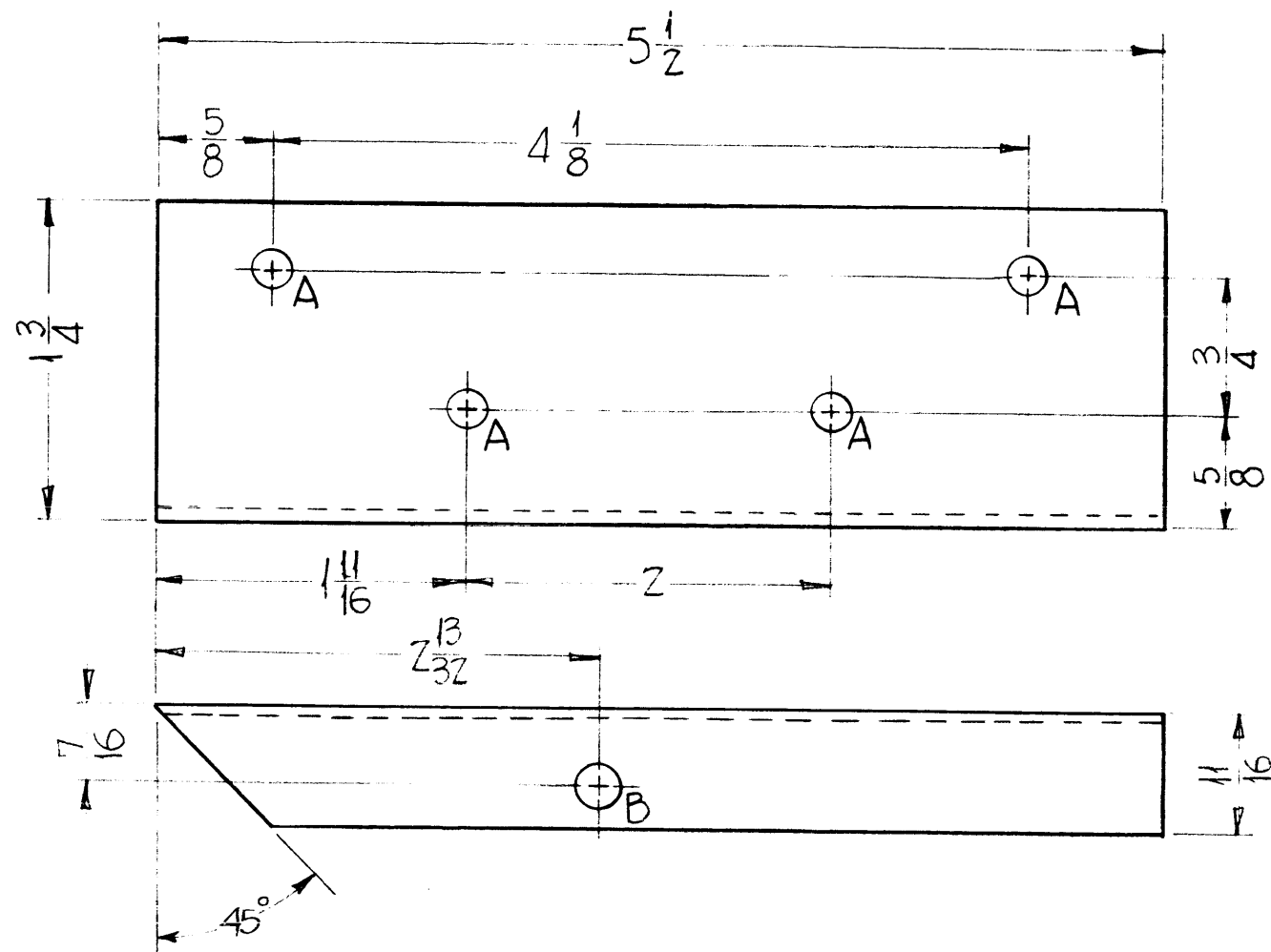
THE TECHNICAL MATERIEL CORPORATION claims proprietary right in the material disclosed hereon. This drawing is issued in confidence for engineering information only and may not be reproduced or used to manufacture anything shown hereon without permission from THE TECHNICAL MATERIEL CORPORATION to the user. This drawing is loaned for mutual assistance and is subject to recall at any time.

Property of:  
 THE TECHNICAL MATERIEL CORPORATION  
 MAMARONECK, NEW YORK

REQ.	ITEM	PART NO.	DESCRIPTION	SYMBOL
		.020 THK EACH	THE TECHNICAL MATERIEL CORP. MAMARONECK, NEW YORK	
		STOCK SIZE		
		BERYLLIUM COPPER	CONTACT, SWITCH SPRING TYPE	
		MATERIAL		
		FULLY HARD	J.C. Biele	MS-2445
		SEE NOTE		
		TYPE & TEMPER	DRAWN	FINAL APPROVAL
		HEAT TREAT. SPEC.	CHECKER	
		SEE NOTE		
		FINISH & SPEC. NO.	ELEC. DES. APP.	
			MECH. DES. APP.	

SYM	DESCRIPTION	DATE	CH. NO.	DRAFTS	CHECKER	ENG. APP.
	UNLESS OTHERWISE SPECIFIED:					
	DIMENSIONS ARE IN INCHES					
	TOLERANCES ON					
	FRACTIONS ± 1/64					
	DECIMALS ± .005					
	ANGLES ± 1/2°					

MS-2446



HOLES	REQ
A ~ 13/64	4
B ~ 1/4	1

NOTICE TO PERSONS RECEIVING THIS DRAWING

THE TECHNICAL MATERIEL CORPORATION claims proprietary right in the material disclosed hereon. This drawing is issued in confidence for engineering information only and may not be reproduced or used to manufacture anything shown hereon without permission from THE TECHNICAL MATERIEL CORPORATION to the user. This drawing is loaned for mutual assistance and is subject to recall at any time.

Property of:  
**THE TECHNICAL MATERIEL CORPORATION**  
 MAMARONECK, NEW YORK

NOTES

USE MATERIAL THICKNESS FOR MAX. RADIUS ON BEND, UNLESS OTHERWISE SPECIFIED.

REF: LD-861 (1)

SYM	DESCRIPTION	DATE	CH. NO.	DRAFTS	CHECKER	ENG. APP.

UNLESS OTHERWISE SPECIFIED:  
 DIMENSIONS ARE IN INCHES  
 TOLERANCES ON FRACTIONS  $\pm 1/64$  DECIMALS  $\pm .005$  ANGLES  $\pm 1/2^\circ$

SCALE:  
 MAXIMUM ALLOWABLE TOLERANCES HAVE BEEN DETERMINED AND ANY DEVIATIONS WILL BE CAUSE FOR REJECTION.  
 REMOVE ALL BURRS AND SHARP EDGES

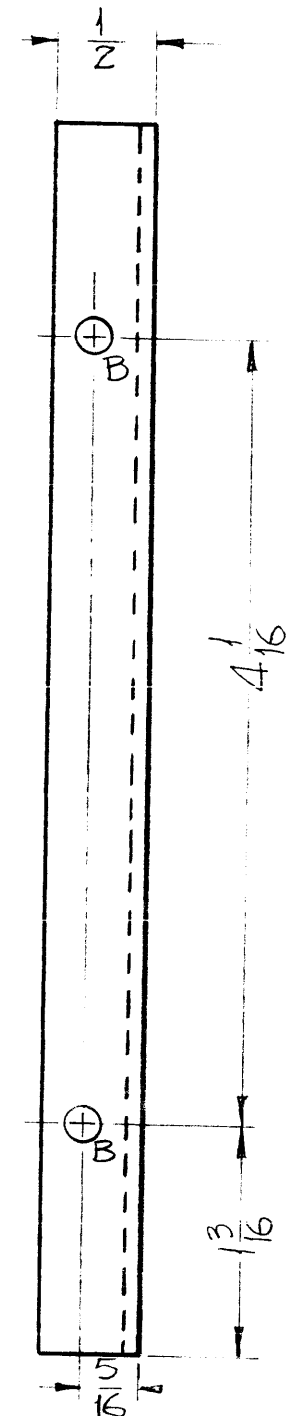
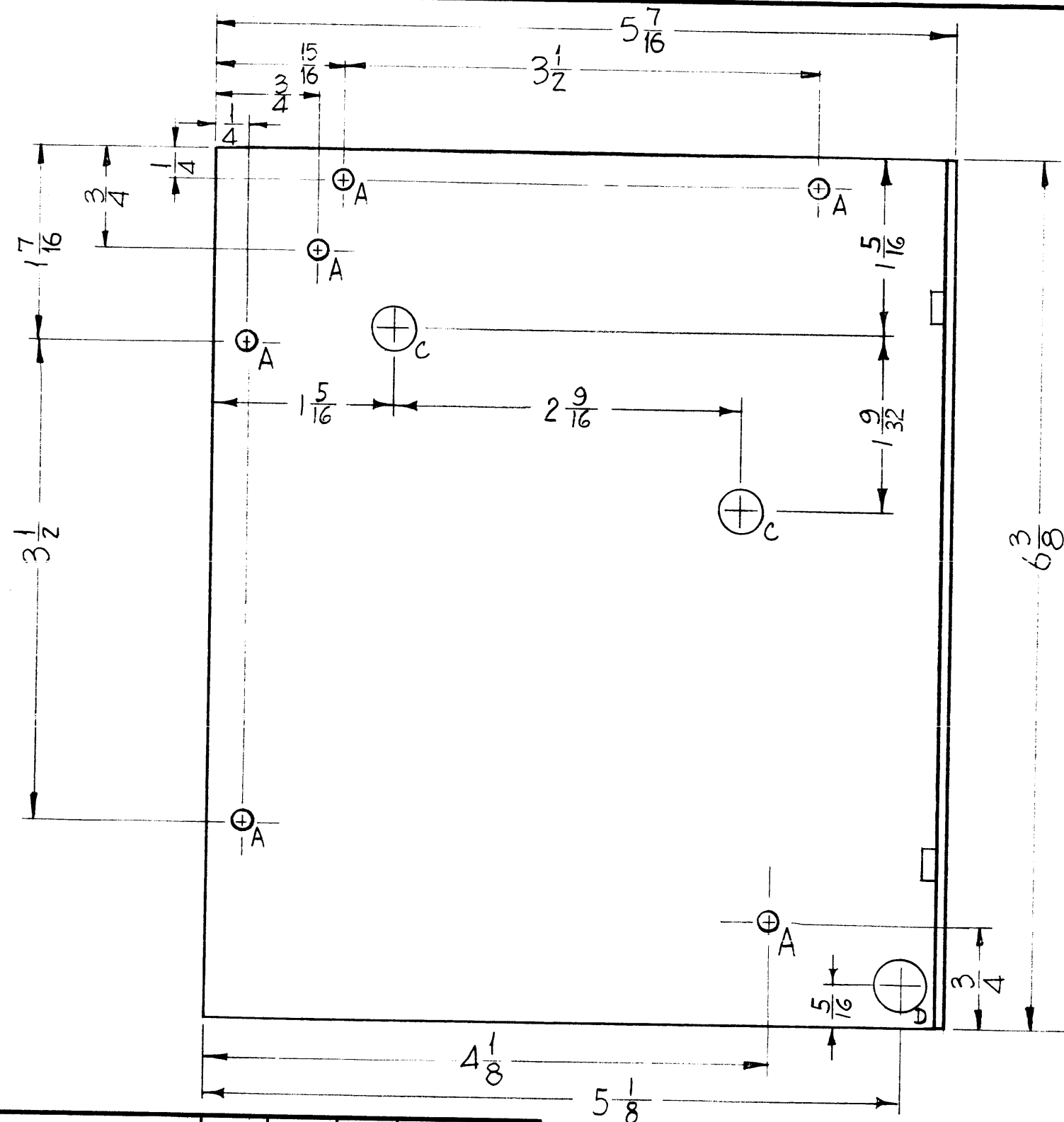
REQ. PER UNIT	MODEL	SECTION	ASS'Y. NO.	DATE
1	CHG-1	OVER		10-14-60

USED ON

REQ.	ITEM	PART NO.	DESCRIPTION	SYMBOL
	.064		THE TECHNICAL MATERIEL CORP. MAMARONECK, NEW YORK	
	ALUMINUM		SUPPORT BRACKET, REAR	
	5052-H32			
	5-404 Yellow Inertia			

DRAWN: *D. J. [Signature]*  
 CHECKER: *A. D. [Signature]*  
 FINAL APPROVAL: *[Signature]*  
 MS-2446

MS-Z447 A



HOLES	REQ
A - 5/32 DIA.	6
B - .191 (for NT-129-632-4)	2
C - 5/16 DIA.	2
D - 3/8 DIA.	1

NOTES -  
 1) Mount Inserts AFTER finishing.  
 2) Use material thickness for Max. Radius ON bend, unless otherwise specified.

SYM	DESCRIPTION	DATE	CH. NO.	DRAFTS	CHECKER	ENG. APP.
A	TWO "C" & ONE "D" HOLES ADDED	11-8-60	3433	<i>[Signature]</i>	<i>[Signature]</i>	<i>[Signature]</i>

UNLESS OTHERWISE SPECIFIED:  
 DIMENSIONS ARE IN INCHES  
 TOLERANCES ON FRACTIONS ± 1/64 DECIMALS ± .005 ANGLES ± 1/2°

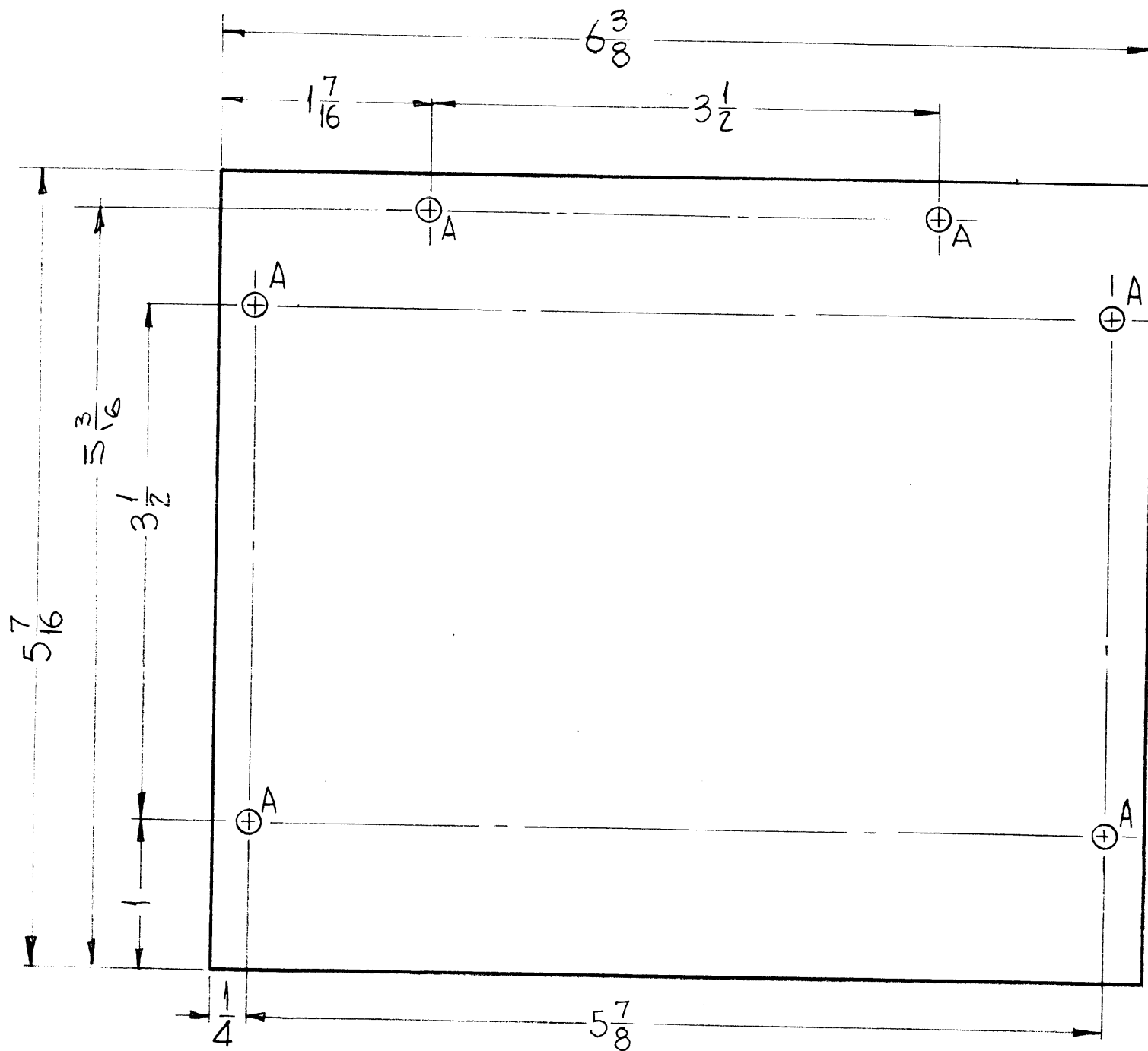
SCALE:  
 MAXIMUM ALLOWABLE TOLERANCES HAVE BEEN DETERMINED AND ANY DEVIATIONS WILL BE CAUSE FOR REJECTION. REMOVE ALL BURRS AND SHARP EDGES

REQ. PER UNIT	MODEL	SECTION	ASS'Y. NO.	DATE
1	CHG	OVEN	OVEN/OSC	10/14/60

USED ON

REQ.	ITEM	PART NO.	DESCRIPTION	SYMBOL
2	1	NT-129-632-4	NUT, SWAGE	
.064 STOCK SIZE			THE TECHNICAL MATERIEL CORP. MAMARONECK, NEW YORK	
ALUMINUM			TOP COVER, OVEN	
5082-H37			<i>[Signature]</i>	
TYPE & TEMPER		HEAT TREAT. SPEC.	DRAWN	CHECKER
S-404 yellow Iridite			<i>[Signature]</i>	<i>[Signature]</i>
FINISH & SPEC. NO.			ELEC. DES. APP.	MECH. DES. APP.
			<i>[Signature]</i>	<i>[Signature]</i>





HOLES  
A - 5/32 DIA.      REQ  
4

ALL PERSONS RECEIVING THIS DRAWING  
THE TECHNICAL MATERIEL CORPORATION claims  
proprietary right in the material disclosed hereon.  
This drawing is issued in confidence for engineering  
information only and may not be reproduced or used  
in manufacture anything shown hereon without per-  
mission from THE TECHNICAL MATERIEL CORPORA-  
TION to the user. This drawing is loaned for mutual  
assistance and is subject to recall at any time.

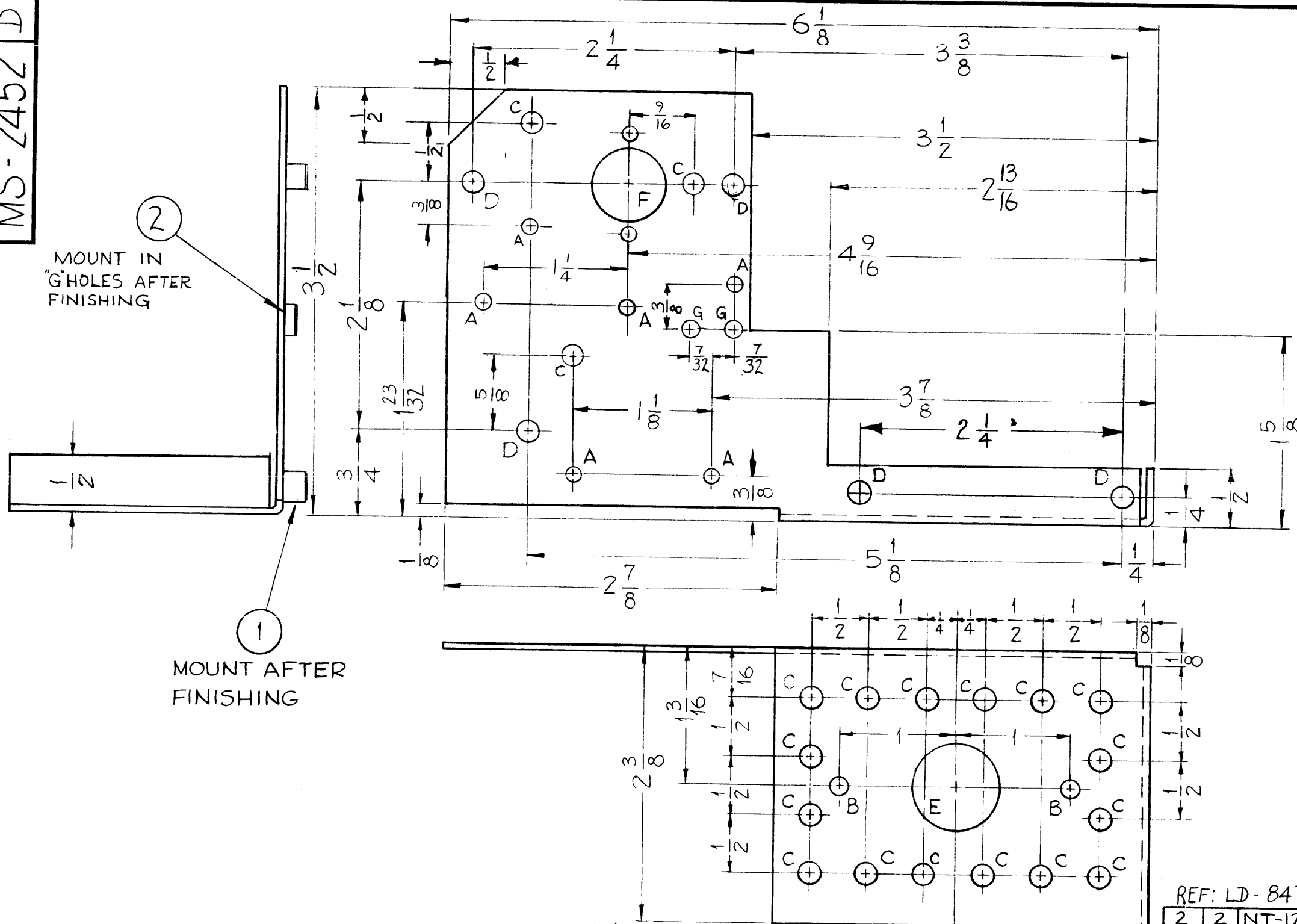
Property of:  
THE TECHNICAL MATERIEL CORPORATION  
MAMARONECK, NEW YORK

ISSUE	ITEM	CHANGED FROM	DATE	CH. NO.	DRAFTS	CHECKER	ENG. APP.
TOLERANCES			SCALE:				
DEC. DIM. ±			MAXIMUM ALLOWABLE TOLERANCES HAVE				
FRAC DIM. ± 1/64			BEEN DETERMINED AND ANY DEVIATIONS				
ANGULAR DIM. ±			WILL BE CAUSE FOR REJECTION.				
			REMOVE ALL BURRS AND SHARP EDGES				

1	CHG - 2	OVEN/OSC	10/14/60
REQ PER UNIT	MODEL	PROJECT NO.	ASSY. NO.
			DATE

REQ. ITEM	PART NO.	DESCRIPTION	SYMBOL
.064		THE TECHNICAL MATERIEL CORP.	
		MAMARONECK, NEW YORK	
ALUMINUM		BOTTOM COVER, OVEN	
5052-H32		DRAWN	CHECKED
5404 Yellow Iridite			FINAL APPROVAL
			MS-2448

MS-2452 D



HOLES --  
A ~  $\frac{1}{8}$  DIA. 6 Req.

B ~  $\frac{5}{32}$  DIA. 2 Req.

C ~  $\frac{3}{16}$  DIA. 19 Req.

D ~ NO. 12 DRILL (FOR TE-108-1) 5 Req.

E ~  $\frac{3}{4}$  DIA. 1 Req.

F ~  $\frac{161}{164}$  DIA. (FOR NT-129-440-4) 2 Req.

UNLESS OTHERWISE SPECIFIED.

1 ~ USE MATERIAL THICKNESS FOR  
MAXIMUM RADIUS ON ALL BENDS.

D	2	ONE "A" & ONE "C" HOLE ADDED	1-4-61	3854	M.K.F.	J.P.	
	1	1/2 x 1/2 NOTCH ADDED					
C	1	ONE "D" HOLE ADDED	12-20-60	3745	M.A.S.	J.P.	
B	3	DIM 3/2 WAS 3/165 DIM 1/2 WAS 15/8					
	2	ADDED 2-13/16 NOTCH	11/21/60	3535	D.M.	J.P.	
	1	DELETED (1) "D" HOLE					
A	2	Item Z Added	11-7-60	3410	ELL	J.P.	
	1	@C & A HOLES RELOCATED					
SYM		DESCRIPTION	DATE	CH. NO.	DRAFTS	CHECKER	ENG. APP.

UNLESS OTHERWISE SPECIFIED:

DIMENSIONS ARE IN INCHES

TOLERANCES ON

FRACTIONS  $\pm 1/64$  DECIMALS  $\pm .005$  ANGLES  $\pm 1/2^\circ$

SCALE: FULL, Do NOT SCALE

MAXIMUM ALLOWABLE TOLERANCES HAVE  
BEEN DETERMINED AND ANY DEVIATIONS  
WILL BE CAUSE FOR REJECTION.  
REMOVE ALL BURRS AND SHARP EDGES

1	CHG - 1				10-17-60
REQ. PER UNIT	MODEL	SECTION	ASS'Y. NO.		DATE
		USED ON			

REF: LD-847 (4)

2	2	NT-129-440-4	NUT ROUND, SWAGE TYPE	
5	1	TE108-1	STANDOFF, RIVET TYPE	D
REQ.	ITEM	PART NO.	DESCRIPTION	SYMBOL
.064 THICK			THE TECHNICAL MATERIEL CORP.	
STOCK SIZE			MAMARONECK, NEW YORK	
ALUMINUM			CHASSIS, H.F. AMP.	
MATERIAL				
5052-H-32			J.C. Biele	
TYPE & TEMPER	HEAT TREAT. SPEC.	DRAWN	CHECKER	FINAL APPROVAL
S404 - IRIDITE				
FINISH & SPEC. NO.		ELEC. DES. APP.	MECH. DES. APP.	MS-2452 D

MS-2458

TMC FORM NO. 109

UNLESS OTHERWISE SPECIFIED:  
DIMENSIONS ARE IN INCHES  
TOLERANCES ON  
FRACTIONS  $\pm 1/64$  DECIMALS  $\pm .005$  ANGLES  $\pm 1/20^\circ$

MAXIMUM ALLOWABLE TOLERANCES HAVE BEEN DETERMINED AND ANY DEVIATIONS WILL BE CAUSE FOR REJECTION.  
REMOVE ALL BURRS AND SHARP EDGES

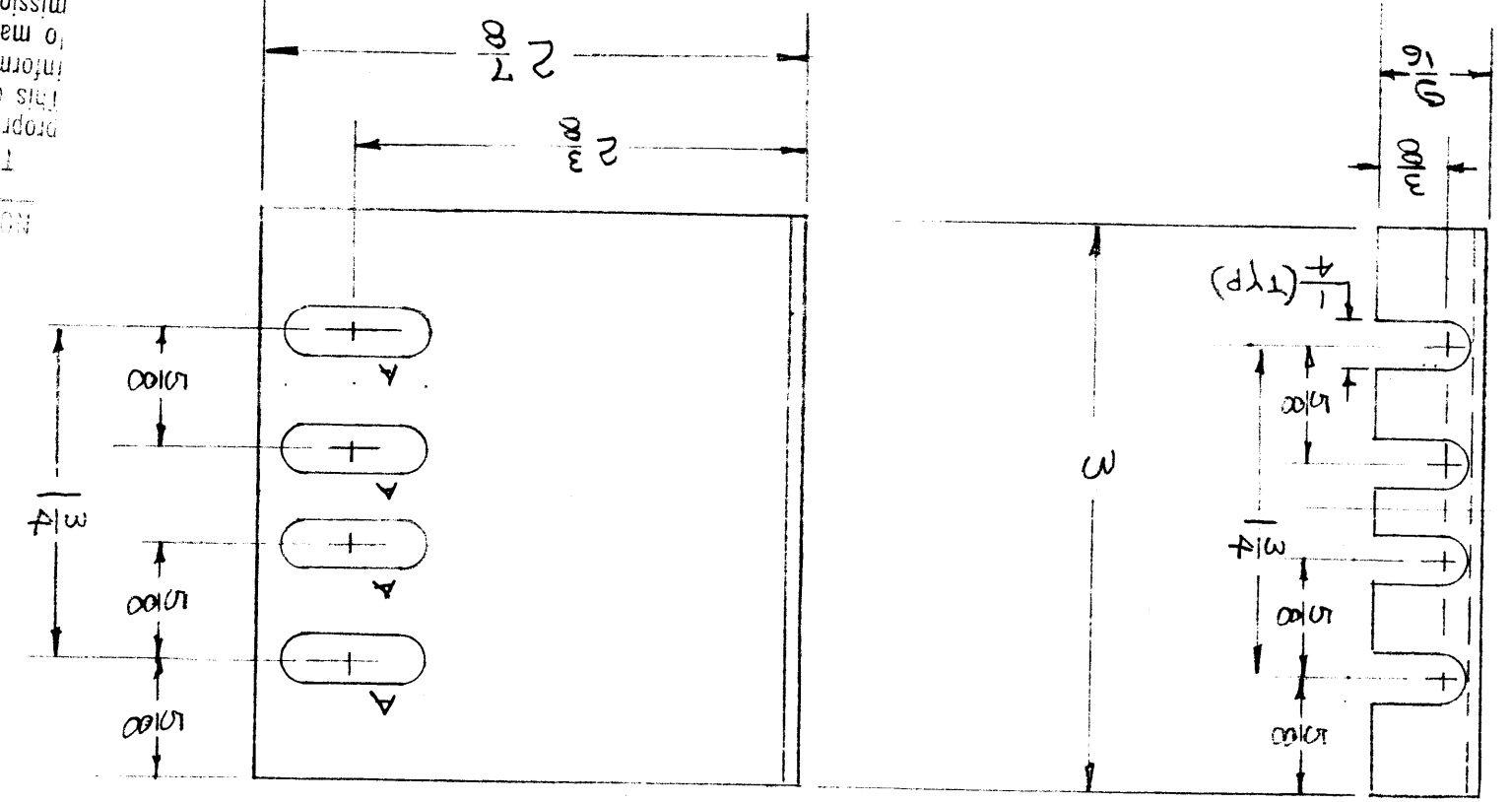
SYM	DESCRIPTION	DATE	CH. NO.	DRAFTS	CHECKER	ENG. APP.

SCALE:  $\frac{1}{2}$

REQ. PER UNIT: 6  
MODEL: GPT-10K  
SECTION:   
ASSY. NO.   
DATE:   
U ED ON

REQ. ITEM	PART NO.	DESCRIPTION	SYMBOL
		THE TECHNICAL MATERIEL CORP. MAMARONECK, NEW YORK	
		STEEL	
		MATERIAL	
		ADAPTER BRKT, KEAK	
		3" SLIDE	
		DRAWN: HLG	
		CHECKER: <i>[Signature]</i>	
		FINISH & SPEC. NO. YELLOW IRIDITE	
		ELEC. DES. APP.	
		MECH. DES. APP.	
		MS-2458	

REF: TK-100  
TK-101  
TK-106



Property of:  
THE TECHNICAL MATERIEL CORPORATION  
MAMARONECK, NEW YORK

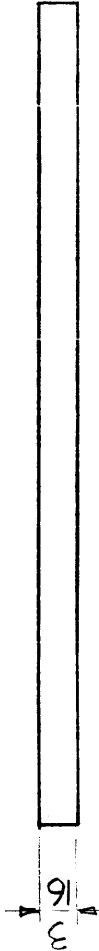
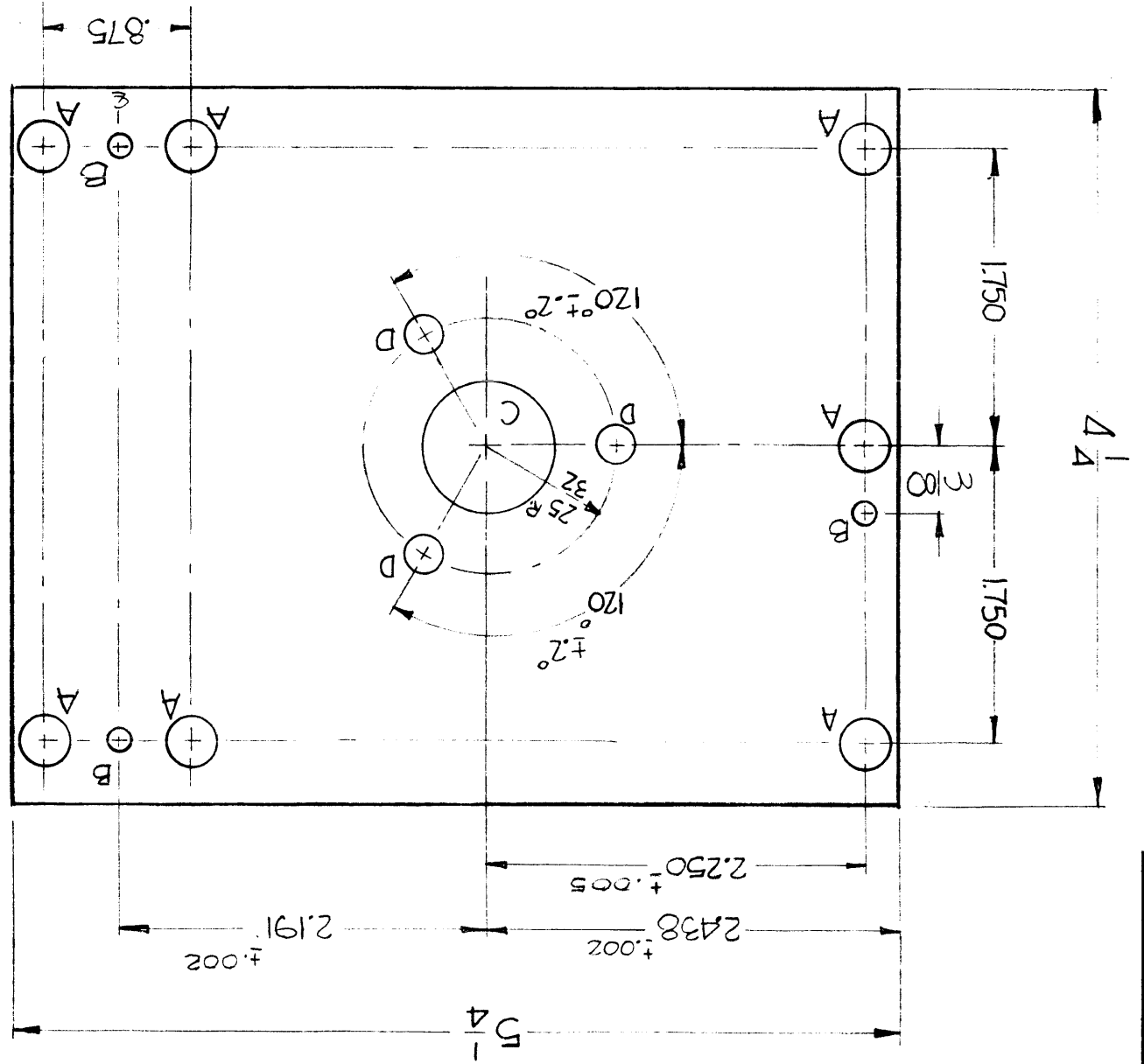
NOTICE TO PERSONS RECEIVING THIS DRAWING  
The drawing is issued in confidence for engineering information only and may not be reproduced or used to manufacture anything shown hereon without permission from THE TECHNICAL MATERIEL CORPORATION to the user. This drawing is loaned for mutual assistance and is subject to recall at any time.

A - 1/4 x 3/4 SLOTS  
4 REQ

UNLESS OTHERWISE SPECIFIED: DIMENSIONS ARE IN INCHES TOLERANCES ON FRACTIONS ± 1/64 DECIMALS ± .005 ANGLES ± 1/2°		SCALE:			
SYM	DESCRIPTION	DATE	CH. NO.	DRAFTS	CHECKER
MAXIMUM ALLOWABLE TOLERANCES HAVE BEEN DETERMINED AND ANY DEVIATIONS WILL BE CAUSE FOR REJECTION. REMOVE ALL BURRS AND SHARP EDGES					

REQ. PER UNIT	MODEL	SECTION	ASSY. NO.	DATE
1	GPT-40K	AX-209		11-8-60
USED ON				

REQ. ITEM	PART NO.	STOCK SIZE	MATERIAL	TYPE & TEMPER	HEAT TREAT. SPEC.	DRAWN	CHECKER	FINAL APPROVAL	FINISH & SPEC. NO.	ELEC. DES. APP.	MECH. DES. APP.
		3/16 THK	ALUMINUM	2024-T3			A.G.	<i>[Signature]</i>	S404 - yellow indite		
DESCRIPTION		THE TECHNICAL MATERIEL CORP. MAMARONECK, NEW YORK									
SYMBOL		SUB-PLATE, BANDSWITCH									
		MS-2474									



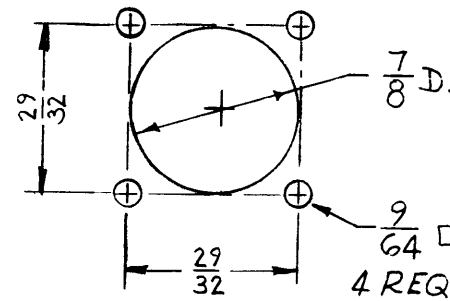
- HOLES
- A ~ 5/16 DIA.      7 REQ.
  - B ~ .128 DIA.      3
  - C ~ 7/8 DIA.      1
  - D ~ 13/64 DIA      3

NOTICE TO PERSONS RECEIVING THIS DRAWING  
 THE TECHNICAL MATERIEL CORPORATION claims  
 proprietary right in the material disclosed hereon.  
 This drawing is issued in confidence for engineering  
 information only and may not be reproduced or used  
 to manufacture anything shown hereon without per-  
 mission from THE TECHNICAL MATERIEL CORPORA-  
 TION to the user. This drawing is loaned for mutual  
 assistance and is subject to recall at any time.  
 Property of:  
 THE TECHNICAL MATERIEL CORPORATION  
 MAMARONECK, NEW YORK

MS-2474

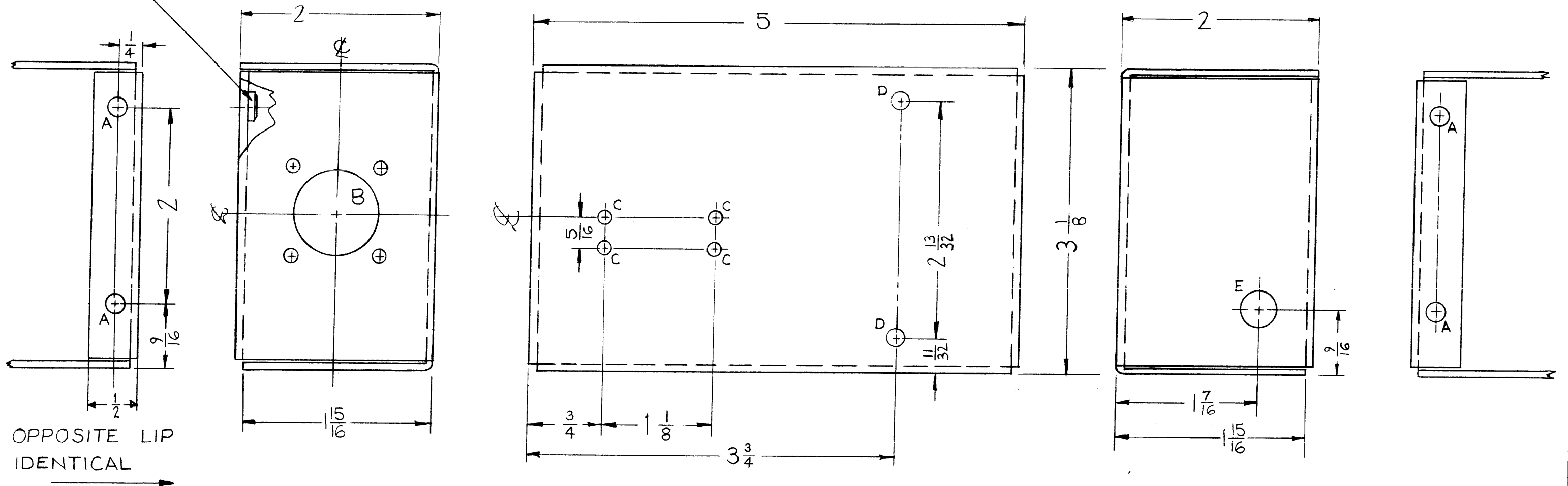
MS-2492 B

DETAIL "B"



- A ~ .224-.221 DIA. ~ ~ ~ 4 REQ
- B ~ SEE DETAIL ~ ~ ~ 1 REQ
- C ~ 9/64 DIA. ~ ~ ~ 4 REQ
- D ~ 3/16 DIA. ~ ~ ~ 2 REQ
- E ~ 3/8 DIA. ~ ~ ~ 1 REQ

① MOUNTED IN ALL "A" HOLES AS SHOWN.



REF. LD-878

SYM	DESCRIPTION	DATE	CH. NO.	DRAFTS	CHECKER	ENG. APP.
B	1-15/16 DIM. RELOCATED; 2" DIM. ADDED	6-21-62	6825	G.S.	<i>[Signature]</i>	<i>[Signature]</i>
A	1-15/16 DIM. WAS 2	5-2-62	6668	EE	<i>[Signature]</i>	<i>[Signature]</i>

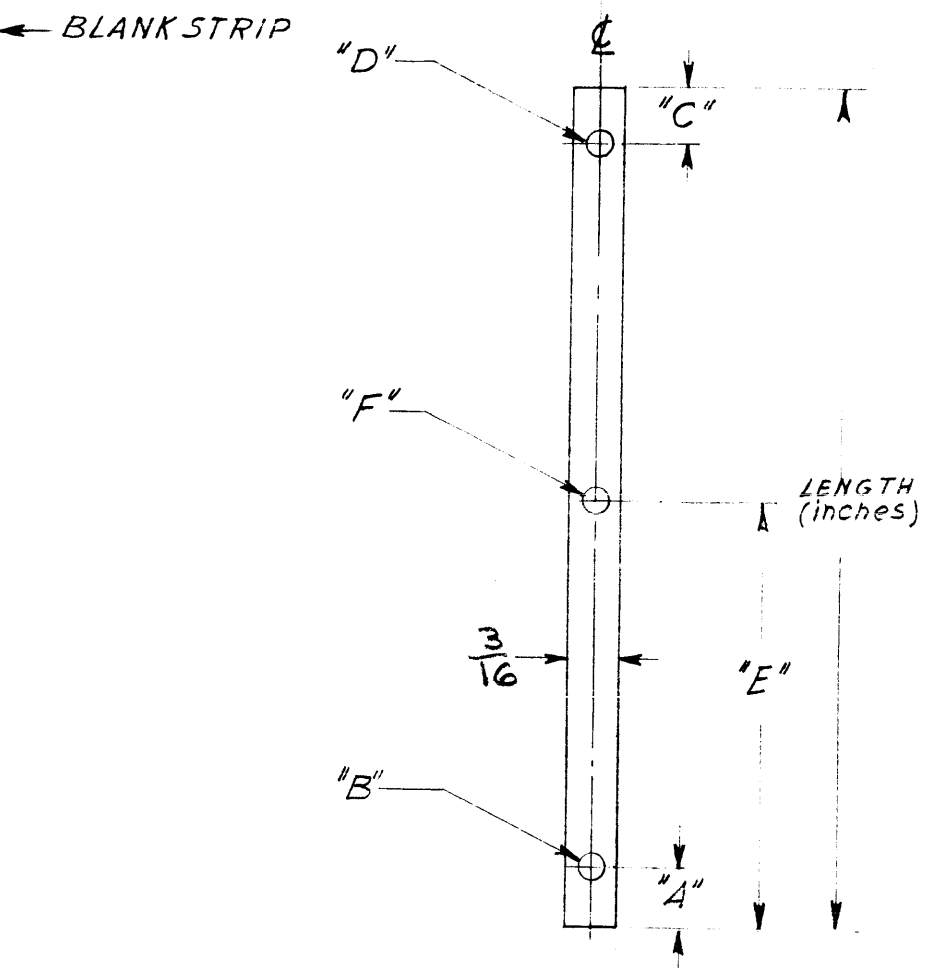
UNLESS OTHERWISE SPECIFIED:  
 DIMENSIONS ARE IN INCHES  
 TOLERANCES ON FRACTIONS ± 1/64 DECIMALS ± .005 ANGLES ± 1/2°  
 SCALE: Do Not SCALE  
 MAXIMUM ALLOWABLE TOLERANCES HAVE BEEN DETERMINED AND ANY DEVIATIONS WILL BE CAUSE FOR REJECTION.  
 REMOVE ALL BURRS AND SHARP EDGES

REQ. PER UNIT	MODEL	SECTION	ASSY. NO.	DATE
1	RAK-9			12-5-60
USED ON				

4	1	NT-129-832-4	NUT ROUND, SWAGE TYPE
REQ. ITEM	PART NO.		DESCRIPTION
.064		THE TECHNICAL MATERIEL CORP.	
STOCK SIZE		MAMARONECK, NEW YORK	
ALUMINUM		CHASSIS, BLOWER CONNECTING	
MATERIAL			
5052-H32		RUIZZO <i>[Signature]</i>	<i>[Signature]</i>
TYPE & TEMPER	HEAT TREAT. SPEC.	DRAWN	CHECKER
S404 YELL. IRIDITE		RK <i>[Signature]</i>	<i>[Signature]</i>
FINISH & SPEC. NO.		ELEC. DES. APP.	MECH. DES. APP.
			MS-2492 B

MS-2495

TMC NO.	"A" DIM.	"B" DIAM.	"C" DIM.	"D" DIAM.	"E" DIM.	"F" DIAM.
MS-2495-1	—	N.H.	—	N.H.	—	N.H.



**NOTICE TO PERSONS RECEIVING THIS DRAWING**

THE TECHNICAL MATERIEL CORPORATION claims proprietary right in the material disclosed hereon. This drawing is issued in confidence for engineering information only and may not be reproduced or used to manufacture anything shown hereon without permission from THE TECHNICAL MATERIEL CORPORATION to the user. This drawing is loaned for mutual assistance and is subject to recall at any time.

Property of:  
THE TECHNICAL MATERIEL CORPORATION  
MAMARONECK, NEW YORK

TYPE DESIGNATION TO BE AS FOLLOWS:

MS-2495-1-4.50

TMC DWG. NO.      DRILLING PLAN CODE (SEE CHART)      LENGTH (inches) (see Note)

NOTE:  
THE LENGTH REQ. WILL BE FOUND ON THE MATERIAL LIST WHERE THIS ITEM IS USED.

NOTE:  
N.H. = NO HOLE

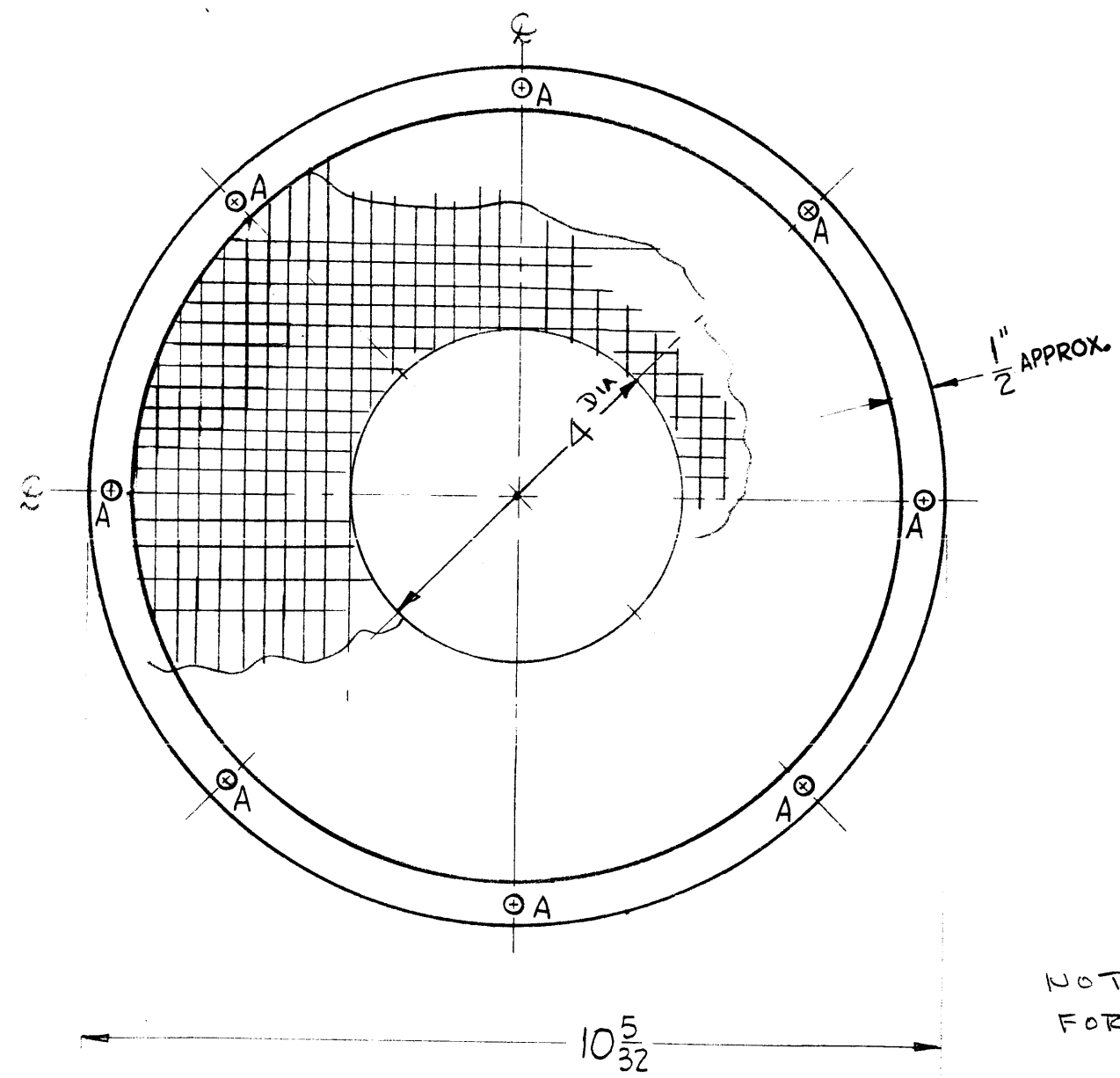
SYM	DESCRIPTION	DATE	CH. NO.	DRAFTS	CHECKER	ENG. APP.
UNLESS OTHERWISE SPECIFIED: DIMENSIONS ARE IN INCHES TOLERANCES ON FRACTIONS ± 1/64    DECIMALS ± .005    ANGLES ± 1/2°		SCALE: MAXIMUM ALLOWABLE TOLERANCES HAVE BEEN DETERMINED AND ANY DEVIATIONS WILL BE CAUSE FOR REJECTION. REMOVE ALL BURRS AND SHARP EDGES				

REQ. PER UNIT	MODEL	SECTION	ASS'Y. NO.	DATE
				12-15-60
USED ON				

REQ. ITEM	PART NO.	DESCRIPTION	SYMBOL
.031 THK.		THE TECHNICAL MATERIEL CORP. MAMARONECK, NEW YORK	
STOCK SIZE		LEAD, CONNECTING, 3/16 WIDE	
COPPER			
MATERIAL			
COMM. SOFT		John J.W.	OB
TYPE & TEMPER	HEAT TREAT. SPEC.	DRAWN	CHECKER
FINISH & SPEC. NO.		ELEC. DES. APP.	MECH. DES. APP.
			MS-2495

MS-2496

HOLE'S REQ'D.  
A-.180 DIA. ON 9.687 DIA, 45° APART 8



TACK WELD SCREEN TO FRAME.

NOTE:  
FOR USE W/ BL-101

NOTICE TO PERSONS RECEIVING THIS DRAWING

THE TECHNICAL MATERIEL CORPORATION claims proprietary right in the material disclosed hereon. This drawing is issued in confidence for engineering information only and may not be reproduced or used to manufacture anything shown hereon without permission from THE TECHNICAL MATERIEL CORPORATION to the user. This drawing is loaned for mutual assistance and is subject to recall at any time.

Property of:

THE TECHNICAL MATERIEL CORPORATION  
MAMARONECK, NEW YORK.

REF: ROTRON # 12407 (MODIFIED AS SHOWN)

SYM	DESCRIPTION	DATE	CH. NO.	DRAFTS	CHECKER	ENG. APP.

UNLESS OTHERWISE SPECIFIED:  
DIMENSIONS ARE IN INCHES  
TOLERANCES ON  
FRACTIONS ± 1/64    DECIMALS ± .005    ANGLES ± 1/2°

SCALE:  
MAXIMUM ALLOWABLE TOLERANCES HAVE BEEN DETERMINED AND ANY DEVIATIONS WILL BE CAUSE FOR REJECTION.  
REMOVE ALL BURRS AND SHARP EDGES

REQ. PER UNIT	MODEL	SECTION	ASS'Y. NO.	DATE
1	RAK-9			12-19-60

USED ON

REQ. ITEM	PART NO.	DESCRIPTION	SYMBOL
		THE TECHNICAL MATERIEL CORP. MAMARONECK, NEW YORK	
		STEEL	SCREENGUARD
		BLACK ANODIZE	
		FINISH & SPEC. NO.	
		ELEC. DES. APP.	MECH. DES. APP.

Handwritten signatures and initials: DJM, HIO, SFW

MS-2496