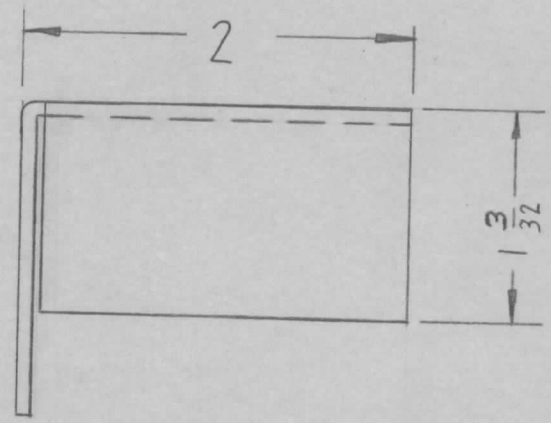
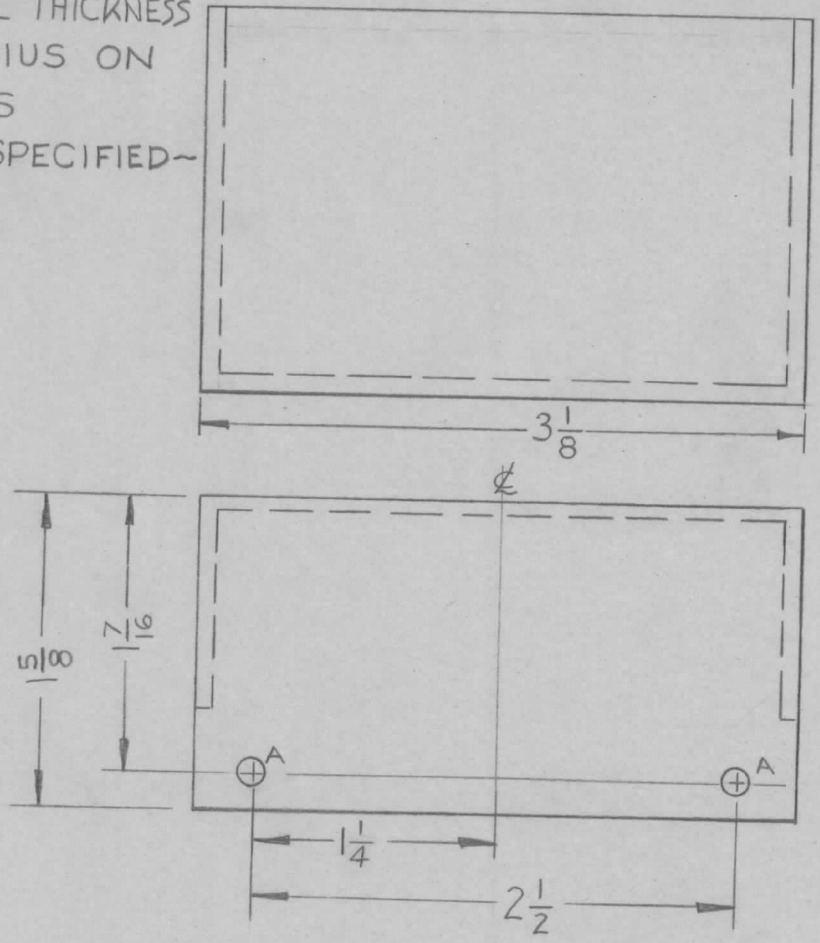


REQ. PER. UNIT	USED ON			MS-2475
	MODEL	ASS'Y. NO.	DATE	
	1	TIS-3	11-14-60	
1	XFK		11-14-60	

NOTE ~
 USE MATERIAL THICKNESS
 FOR MAX. RADIUS ON
 BEND, UNLESS
 OTHERWISE SPECIFIED ~

A ~ 9/64 DIA. 2 REQ



ISSUE	ITEM	CHANGED FROM	DATE	CH. NO.	DRAFTS	CHECKER	ENG. APP.	REQ. ITEM	PART NO.	DESCRIPTION	SYMBOL			
								.051		THE TECHNICAL MATERIEL CORP.				
								STOCK SIZE		MAMARONECK, NEW YORK				
								ALUMINUM		COVER, BOARD				
								MATERIAL		TERMINAL BOARD, ELEMENT				
								5052-H32		REU	ADQ			
								TYPE & TEMPER	HEAT TREAT. SPEC.	DRAWN	CHECKED			
								5404 IRIDITE						
								FINISH & SPEC. NO.		ELEC. DES. APP	MECH. DES. APP			
TOLERANCES			SCALE: (DO NOT SCALE)											
DEC. DIM. ±			MAXIMUM ALLOWABLE TOLERANCES HAVE BEEN DETERMINED AND ANY DEVIATIONS WILL BE CAUSE FOR REJECTION. REMOVE ALL BURRS AND SHARP EDGES											
FRAC. DIM. ± 1/64														
ANGULAR DIM. ±														
											MS-2475			