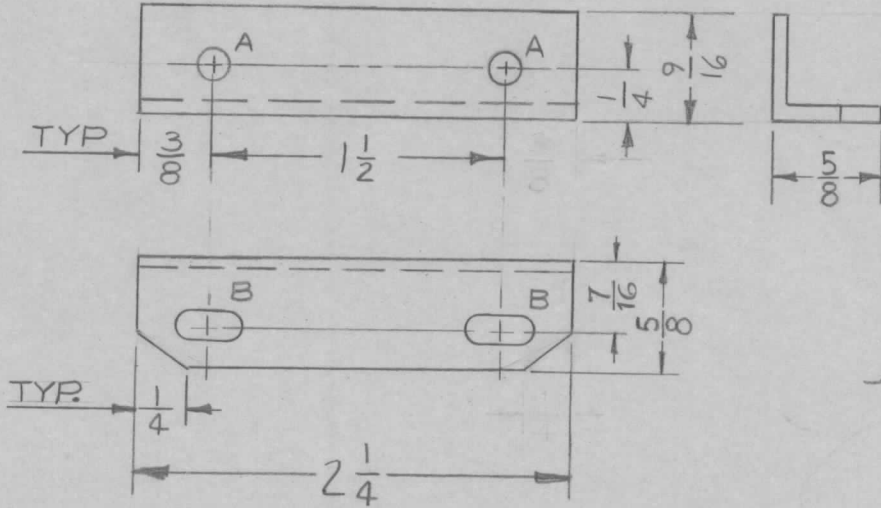


REQ. PER. UNIT	USED ON			MS-2472	A
	MODEL	ASS'Y. NO.	DATE		
2	TIS-3		11-3-60		



A - $\frac{1}{16}$ AD 2 HOLES
 B - $\frac{5}{32} \times \frac{5}{16}$ 2 SLOTS

							REQ. ITEM	PART NO.	DESCRIPTION	SYMBOL	
							.051		THE TECHNICAL MATERIEL CORP.		
							STOCK SIZE		MAMARONECK, NEW YORK		
							ALUMINUM		BRACKET, 200KC OVEN		
							MATERIAL				
A	3	"B" HOLES WERE $\frac{9}{64} \times \frac{9}{32}$	1-11-61	3872	W.D.F.	JCB	5052-H32				
	2	$\frac{7}{16}$ DIM. WAS $\frac{3}{8}$									
	1	$\frac{5}{8}$ DIM. WAS $\frac{9}{16}$									
ISSUE	ITEM	CHANGED FROM	DATE	CH. NO.	DRAFTS	CHECKER	ENG. APP.				
TOLERANCES			SCALE: FULL DO NOT SCALE								
DEC. DIM. \pm			MAXIMUM ALLOWABLE TOLERANCES HAVE BEEN DETERMINED AND ANY DEVIATIONS WILL BE CAUSE FOR REJECTION.				TYPE & TEMPER	HEATTREAT. SPEC.	DRAWN	CHECKED	FINAL APPROVAL
FRAC. DIM. $\pm \frac{1}{64}$			REMOVE ALL BURRS AND SHARP EDGES				S404 - IRIDITE				
ANGULAR DIM. \pm							FINISH & SPEC. NO.	ELEC. DES. APP	MECH. DES. APP		
										MS-2472 A	