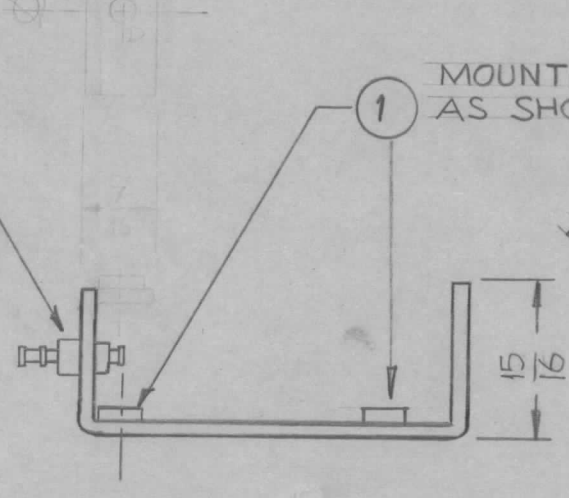
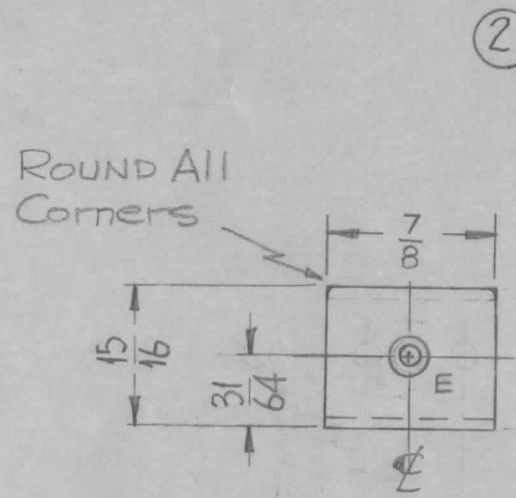
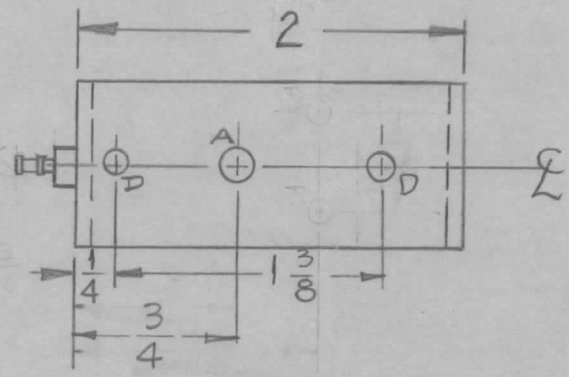
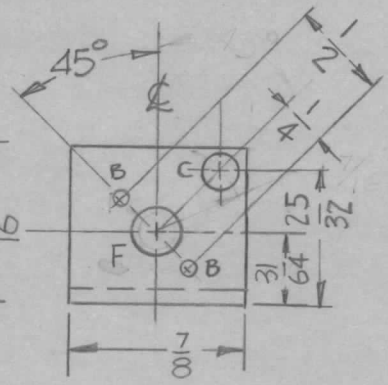


REQ. PER UNIT	USED ON			MS-2436 D
	MODEL	ASS'Y. NO.	DATE	
1	CHG-1	RF/SECTION #4	9-22-60	



MOUNTED IN ALL "D" HOLES AS SHOWN



- A - Dr. & C'sink for 4-40 FHS. - 1 Req.
- B - 3/32 DIA. 2 Req.
- C - 3/16 DIA. 1 Req.
- D - .161-.164 D. (FOR NT 129-440-4) 2 Req.
- E - .156 DIA (for Item 2) 1 Req.
- F - 1/4 DIA. 1 Req.

D	1	2" DIM. WAS 1.5/16	6-19-61	5074	WAF	JCS	
C	1	25/32 DIM. WAS 27/32	12-2-60	3659	WAF	JCS	
B	1	COMPLETELY REDESIGNED	11-21-60	3512	DXM	JCS	
A	2	① F' Hole Added	10-6-60	3147	J.C.B.		
	1	① E' Hole Deleted					

1	2	TE-169-1	TERMINAL, FEED THRU	E			
2	1	NT-129-440-4	NUT, ROUND, SWAGE TYPE	D			
REQ. ITEM	PART NO.		DESCRIPTION	SYMBOL			
	.064		THE TECHNICAL MATERIEL CORP. MAMARONECK, NEW YORK				
STOCK SIZE							
ALUMINUM							
MATERIAL			MTG. BRACKET				
			BAL. MODULATOR				
TOLERANCES		SCALE: (DO NOT SCALE)	5052-H32	R-0220			
DEC. DIM. ±		MAXIMUM ALLOWABLE TOLERANCES HAVE BEEN DETERMINED AND ANY DEVIATIONS WILL BE CAUSE FOR REJECTION. REMOVE ALL BURRS AND SHARP EDGES	TYPE & TEMPER	HEATTREAT. SPEC.	DRAWN	CHECKED	FINAL APPROVAL
FRAC. DIM. ± 1/64			S404 YELL. IRIDITE				
ANGULAR DIM. ±			FINISH & SPEC. NO.	ELEC. DES. APP	MECH. DES. APP		
							MS-2436 D