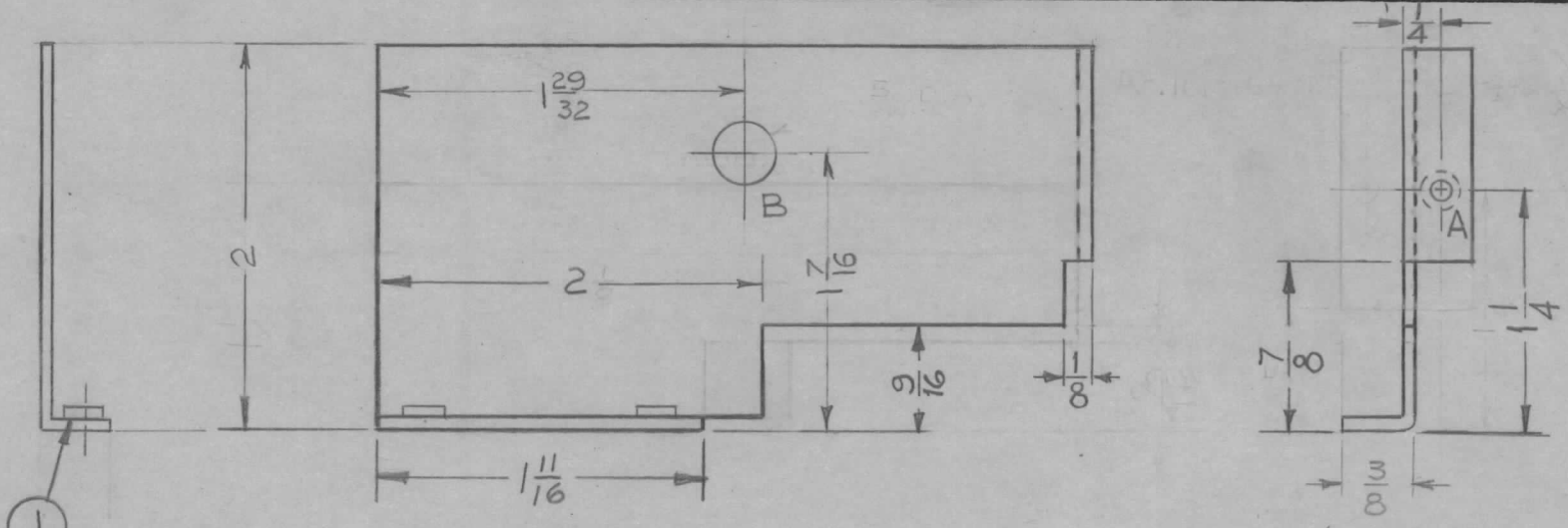
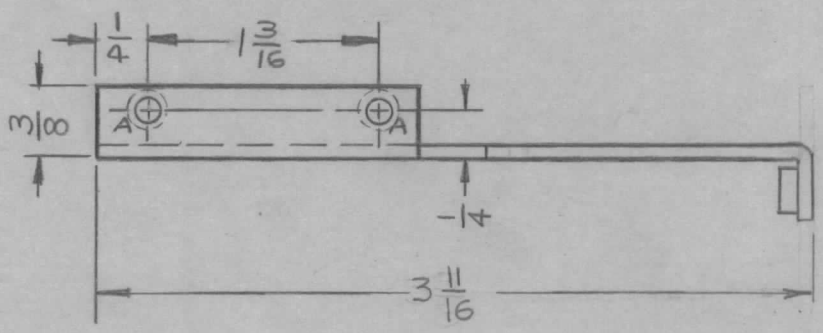


REQ. PER. UNIT	USED ON			MS-2435	D
	MODEL	ASS'Y. NO.	DATE		
1	CHG-1	RF/MF Section	9-22-60		



A- .161-164D. (FOR NT 129-440-4) 3 REQ  
 B- 5/16 (.312) - 1 REQ

MOUNTED IN ALL "A" HOLES AFTER FINISHING



NOTE:  
 USE MATERIAL THICKNESS FOR MAX. RADIUS ON ALL BENDS UNLESS OTHERWISE SPECIFIED.

D	1	7/8 X 1/8 NOTCH WAS 5/8	6-20-61	5083	WGF	JCS	JCS	3	1	NT-129-440-4	NUT, ROUND, SWAGE TYPE				
C	1	9/16 DIM. WAS 7/16	6-7-61	5033	WGF	JCS	JCS	THE TECHNICAL MATERIEL CORP. MAMARONECK, NEW YORK SHIELD, RF							
B	2	CHANGED DIRECTION OF (1) LIP	4/26/61	4792	JPM	JCS	JCS						.064		STOCK SIZE
A	1	COMPLETE REDESIGN	9/7/60	3117	GD	JCS	JCS						ALUMINUM		MATERIAL
ISSUE ITEM CHANGED FROM			DATE	CH. NO.	DRAFTS	CHECKER	ENG. APP.	5052-H32			Ruzzo	JCS	JCS		
TOLERANCES			SCALE: (DO NOT SCALE)					TYPE & TEMPER		HEAT TREAT. SPEC.	DRAWN	CHECKED	FINAL APPROVAL		
DEC. DIM. ±			MAXIMUM ALLOWABLE TOLERANCES HAVE BEEN DETERMINED AND ANY DEVIATIONS WILL BE CAUSE FOR REJECTION. REMOVE ALL BURRS AND SHARP EDGES					5404 YELL. IRIDITE					MS-2435 D		
FRAC. DIM. ± 1/64								FINISH & SPEC. NO.		ELEC. DES. APP		MECH. DES. APP			
ANGULAR DIM. ±															