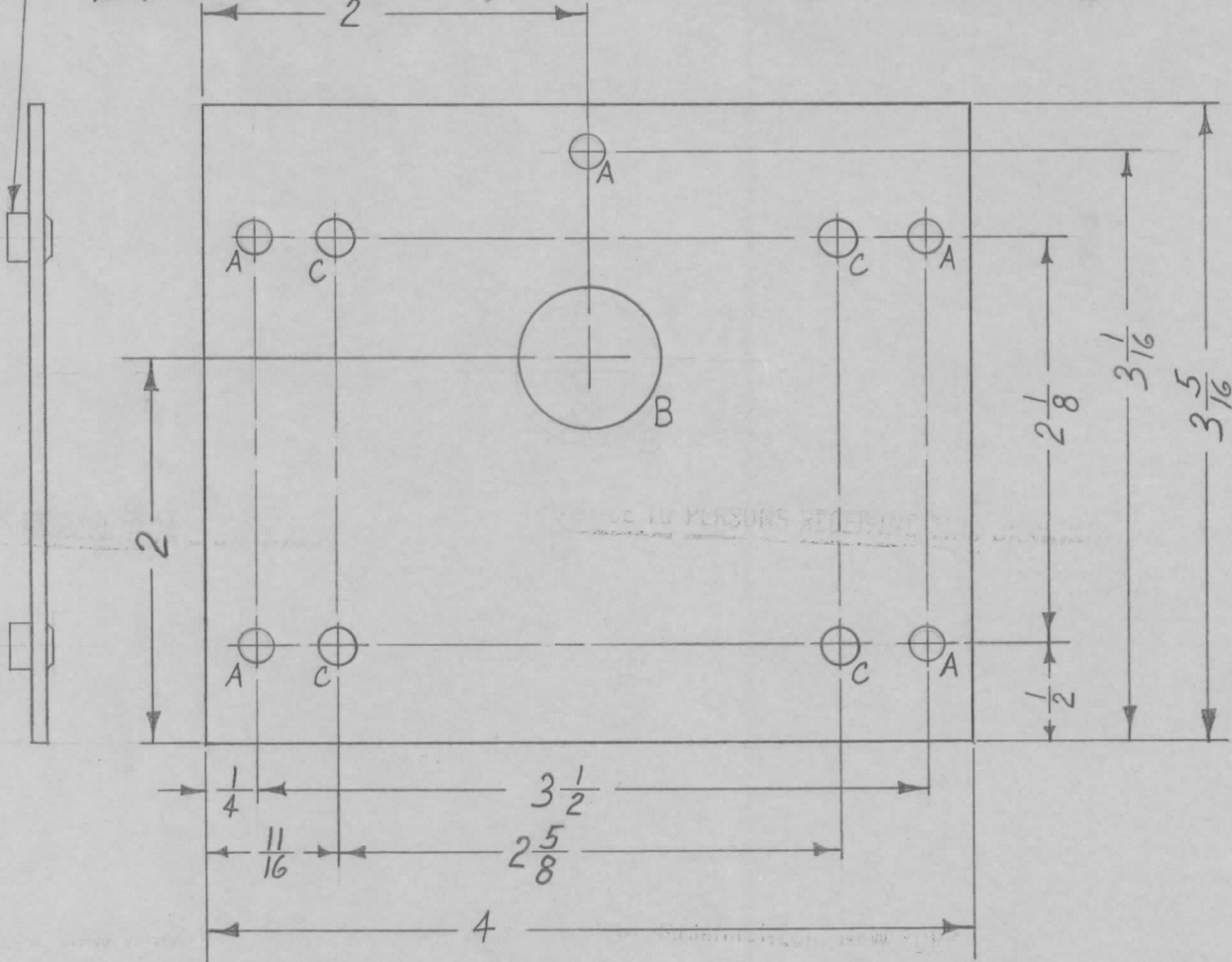


MOUNT ITEM 1 TE-108-19 IN ALL "C" HOLES. AFTER FINISHING

REQ. PER. UNIT	USED ON		
	MODEL	ASS'Y. NO.	DATE
1	CHG-1	OVEN/BSC	9-14-60

MS-2405 A


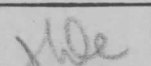



A - $\frac{11}{64}$ DIA. 5 REQ.
 B - $\frac{3}{4}$ DIA. 1 "
 C - .187 DIA. 4 "

NOTICE TO PERSONS RECEIVING THIS DRAWING

THE TECHNICAL MATERIEL CORPORATION claims proprietary right in the material disclosed hereon. This drawing is issued in confidence for engineering information only and may not be reproduced or used to manufacture anything shown hereon without permission from THE TECHNICAL MATERIEL CORPORATION to the user. This drawing is loaned for mutual assistance and is subject to recall at any time.

Property of:
 THE TECHNICAL MATERIEL CORPORATION
 MAMARONECK, NEW YORK

				4	1	TE-108-19	STANDOFF, RIVET TYPE			
				REQ. ITEM	PART NO.			DESCRIPTION		
				.064			THE TECHNICAL MATERIEL CORP.			
				STOCK SIZE			MAMARONECK, NEW YORK			
				ALUMINUM			OVEN SHELL, FRONT COVER			
				MATERIAL						
				5052-H32			  			
				TYPE & TEMPER			DRAWN			
				S404 YELL. IRIDITE			CHECKED			
				FINISH & SPEC. NO.			FINAL APPROVAL			
							MS-2405 A			
				ELEC. DES. APP			MECH. DES. APP			
TOLERANCES DEC. DIM. \pm FRAC. DIM. $\pm 1/64$ ANGULAR DIM. \pm				SCALE: FULL MAXIMUM ALLOWABLE TOLERANCES HAVE BEEN DETERMINED AND ANY DEVIATIONS WILL BE CAUSE FOR REJECTION. REMOVE ALL BURRS AND SHARP EDGES						
ISSUE	ITEM	CHANGED FROM	DATE	CH. NO.	DRAFTS	CHECKER	ENG. APP.			
A	1	"A" HOLE WERE 9/64 D	11-1-60	3351	27	