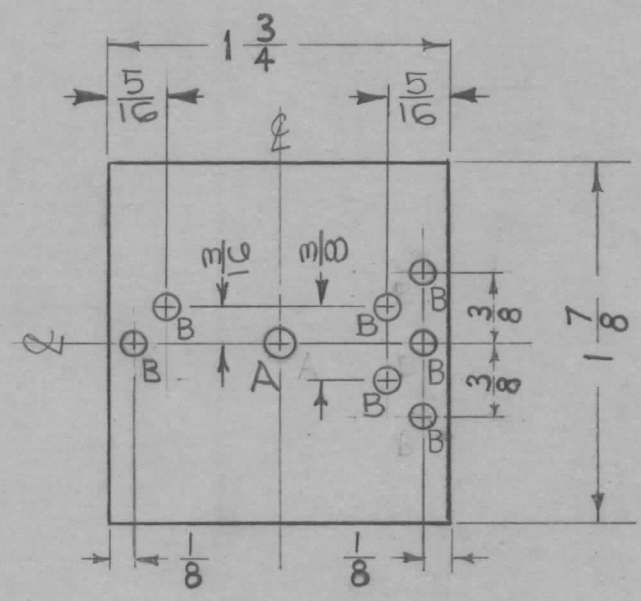


REQ. PER UNIT	USED ON			MS-2276	B
	MODEL	ASS'Y. NO.	DATE		
1	CLL-1		5-17-60		

A ~  $\frac{5}{32}$  DIA. 711 D 1 REQ.  
 B ~  $\frac{1}{8}$  DIA. 9931 B 7 REQ.



							REQ.	ITEM	PART NO.	DESCRIPTION	SYMBOL		
									.040	THE TECHNICAL MATERIEL CORP.			
									STOCK SIZE	MAMARONECK, NEW YORK			
									ALUMINUM	PLATE, MOUNTING			
									MATERIAL				
									5052-H32				
									TYPE & TEMPER	HEAT TREAT. SPEC.	DRAWN	CHECKED	FINAL APPROVAL
									S404 YELL. IRIDITE				
									FINISH & SPEC. NO.	ELEC. DES. APP	MECH. DES. APP		
B 1 3 "B" HOLES ADDED A 2 "B" HOLES WERE 3/32 D. 1 "A" HOLE WAS 1/64 D.							G-23-63	9382	N.O.				
CHANGED FROM DATE CH. NO. DRAFTS CHECKER ENG. APP.							5-15-61	4891	N.G.F.				
TOLERANCES DEC. DIM. ± FRAC. DIM. ± 1/64 ANGULAR DIM. ±							SCALE: MAXIMUM ALLOWABLE TOLERANCES HAVE BEEN DETERMINED AND ANY DEVIATIONS WILL BE CAUSE FOR REJECTION. REMOVE ALL BURRS AND SHARP EDGES						
												MS-2276	B