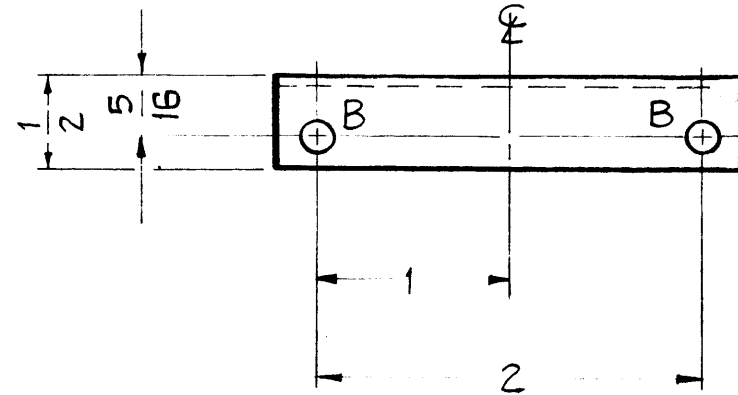
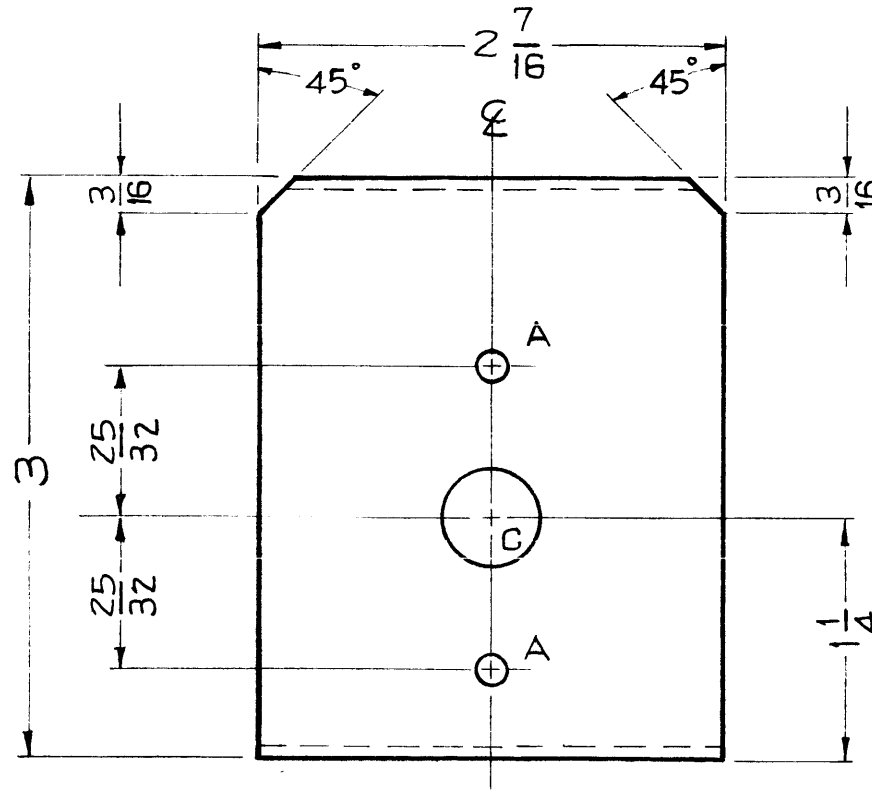
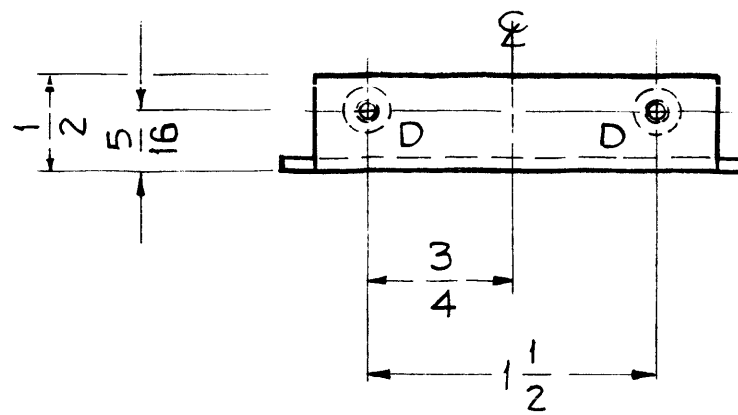
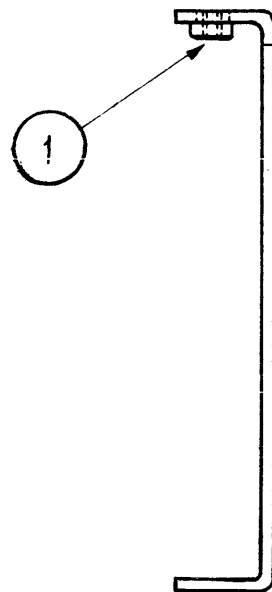


MS-2221 A



HOLES ~

- A ~ 5/32 (.156) DIA. 2 REQ.
 - B ~ 11/64 (.171) DIA. 2 REQ.
 - C ~ 1/2 (.500) DIA. 1 REQ.
 - D ~ .161 MIN. .164 MAX. DIA'S. 2 REQ.
- FOR NT129-440-4

NOTICE TO PERSONS RECEIVING THIS DRAWING

THE TECHNICAL MATERIEL CORPORATION claims proprietary right in the material disclosed hereon. This drawing is issued in confidence for engineering information only and may not be reproduced or used to manufacture anything shown hereon without permission from THE TECHNICAL MATERIEL CORPORATION to the user. This drawing is loaned for mutual assistance and is subject to recall at any time.

Property of:

THE TECHNICAL MATERIEL CORPORATION
MAMARONECK, NEW YORK

A 1	PICT. REVISED	10/30/63	10302	MA	MA	MA	MA
ISSUE ITEM	CHANGED FROM	DATE	CH. NO.	DRAFTS	CHECKER	ENG. APP.	
TOLERANCES		SCALE: FULL, DO NOT SCALE					
DEC. DIM. ±		MAXIMUM ALLOWABLE TOLERANCES HAVE BEEN DETERMINED AND ANY DEVIATIONS WILL BE CAUSE FOR REJECTION.					
FRAC. DIM. ± 1/64		REMOVE ALL BURRS AND SHARP EDGES					
ANGULAR DIM. ± 1/2°							

1	CLL - 1			5 - 2 - 60
REQ. PER UNIT	MODEL	PROJECT NO.	ASS'Y. NO.	DATE
USED ON				

2	1	NT129-440-4	NUT, ROUND, SWAGE TYPE		
REQ. ITEM	PART NO.		DESCRIPTION		SYMBOL
.064		THE TECHNICAL MATERIEL CORP.			
STOCK SIZE		MAMARONECK, NEW YORK			
ALUMINUM		BRACKET, FRONT			
MATERIAL		SWITCH MOUNTING			
5052-H32		J.C. Biele			
TYPE & TEMPER		HEAT TREAT. SPEC.		DRAWN	
5404 - IRIDITE				CHECKED	
FINISH & SPEC. NO.		ELEC. DES. APP.		MECH. DES. APP.	
				MS-2221 A	