

STANDARD DRAWING

MS-202 AB

THE TECHNICAL MATERIEL CORPORATION
 PROPRIETARY RIGHTS IN THE MATERIAL DISCLOSED HEREON.
 THIS DRAWING IS ISSUED IN CONFIDENCE FOR ENGINEERING
 INFORMATION ONLY AND MAY NOT BE REPRODUCED OR USED
 TO MANUFACTURE ANYTHING SHOWN HEREON WITHOUT PER-
 MISSION FROM THE TECHNICAL MATERIEL CORPORA-
 TION TO THE USER. THIS DRAWING IS LOANED FOR MUTUAL
 ASSISTANCE AND IS SUBJECT TO RETURN AT ANY TIME.

THE TECHNICAL MATERIEL CORPORATION
 MAMARONECK, NEW YORK

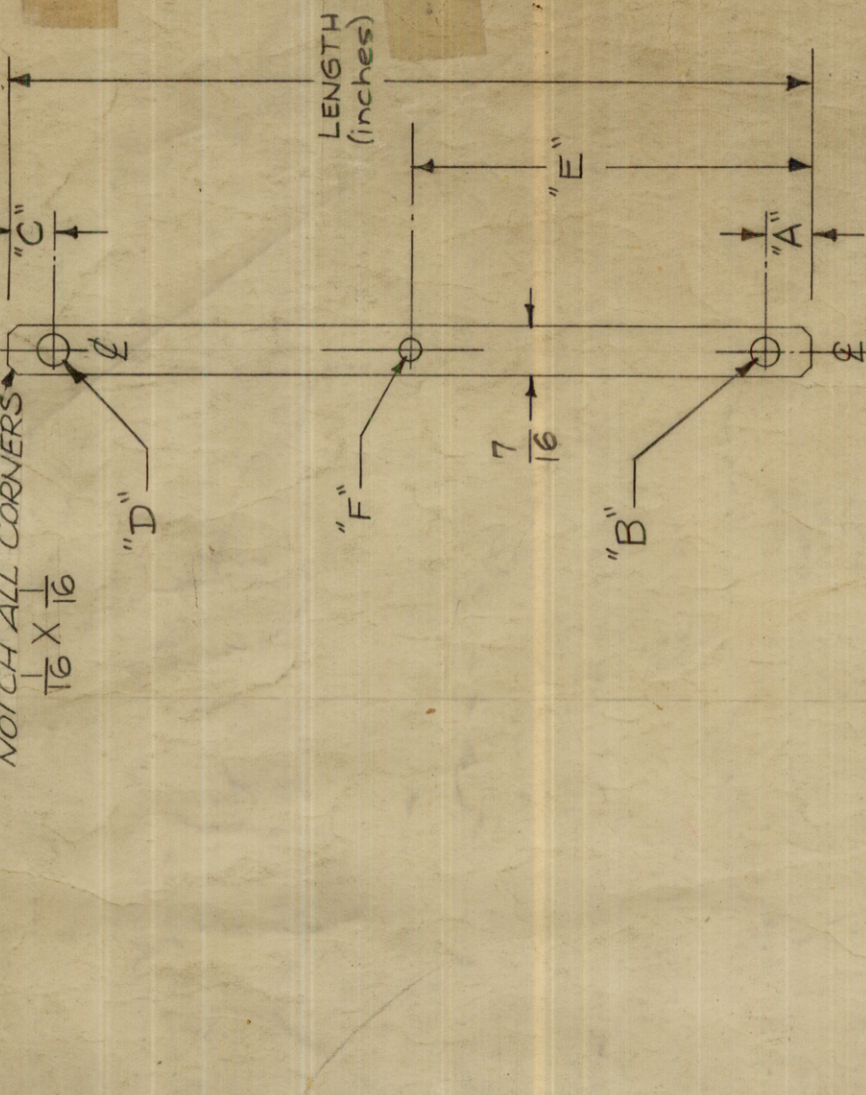
ISSUE ITEM	CHANGED FROM	DATE	CH. NO.	DRAFTS	CHECKER	ENG. APP.
AB	MS-202-45 ADD	3/19/60	1978		KH	MD
AA	MS-202-43, 44 ADD	4/25/59	1966		KH	MD
Z	MS-202-42 ADDED	8-16-66	16759		RME	MM
Y	MS-202-41 ADDED	4-25-66	16148		HUA	QC
W	MS-202-38, 39, 40 NOTED	10/29/65	15025		F.V.V.	QC
V	MATERIAL TYPE AND TEMPER WAS CORRECTED	9/1/65	14744		X.V.V.	QC
U	ON-1, THK. WAS .025 MAT'L THK. COL. ADD.	1/21-64	13323		J.P.	
T	MS-202-37 ADDED	5-26-64	11424		A.M.	
S	MS-202-34, 35, 36 ADDED	4/15/64	10684			
R	MS-202-32, 33 ADDED	4-6-62	6594		E.H.	
P	MS-202-31 ADDED	3-22-62	6516		G.S.	
N	1/16 X 1/16 NOTCH NOTE ADDED	1-24-62	6241		E.H.	
M	MS-202-30 ADDED	10-25-61	5759		E.H.	
L	MS-202-29 ADDED	9-29-61	5625		E.H.	
K	ADDED -26, -27 & -28.	4/26/61	4736		D.M.	
J	ADDED FOR AT-101 MS-202-24 & 25	4/29/60	2213		C.Y.	
H	ADD MS-202-23 (FOR AX-130)	4-11-60			C.Y.	
G	21-22 ADDED	8-25-59			APL	
F	-20 ADDED	8/21/59			D.M.	
E	-19 ADDED	5/13/59			H.D.	
D	ADDED FOR RTF-2 (ADDED FOR AT-101)	12/12/58	594		A.S.C.	
C	MS 985, MS 920, MS 984, MS 979, MS 921, MS 965, MS 982, MS 914, MS 965, MS 961, MS 930 ADDED	11-10-58			J.C.	B
B	MS-202-5 ADDED FOR RFA-1	6/11/58	2		H.D.	
A	MS-202-3 ADDED FOR RFA-1 (TF-) -4 ADDED	5/27/58	1		H.D.	

SCALE: MAXIMUM ALLOWABLE TOLERANCES HAVE BEEN DETERMINED AND ANY DEVIATIONS WILL BE CAUSE FOR REJECTION. REMOVE ALL BURRS AND SHARP EDGES

TMC NO.	"A" DIM. (INCH)	"B" DIA.	"C" DIM. (INCH)	"D" DIA.	"E" DIM.	"F" DIA.	MAT'L THK.
MS-202-1	1/4	NH	1/4	NH	3 1/16	NH	.020
MS-202-2	1/4	1/4	1/4	1/4	3 1/16	1/4	.025
MS-202-3	1/4	3/16	1/4	3/16	3 1/16	NH	
MS-202-4	1/4	1/4	1/4	NH	3 1/16	NH	
MS-202-5	3/16	3/16	3/16	3/16	3 1/16	NH	
MS-202-6	3/16	11/64	3/16	7/32	3 1/16	NH	
MS-202-7	1/4	13/64	1/4	NH	3 1/16	NH	
MS-202-8	1/4	7/32	3/16	5/32	3 1/16	NH	
MS-202-9	1/4	13/64	3/8	13/64	5 9/16	NH	
MS-202-10	3/16	11/64	3/16	11/64	5 9/16	11/64	
MS-202-11	2 5/8	3/16	3 3/16	3/16	3 1/16	NH	
MS-202-12	1/4	5/32 X 3/16 SLOTS	1/4	5/32 X 5/16 SLOTS	3 9/16	5/32 X 5/16 SLOTS	
MS-202-13	1/4	5/32 X 5/16 SLOTS	1/4	NH	3 9/16	NH	
MS-202-14	1/4	5/32 X 3/16 SLOTS	1/4	NH	3 9/16	NH	
MS-202-15	1/4	5/32 X 3/16 SLOTS	1/4	NH	3 9/16	NH	
MS-202-16	3/16	7/32	3/16	7/32	11/16	7/32	
MS-202-17	3/4	13/64	1/4	N.H.	11/16	N.H.	
MS-202-18	3/16	11/64	3/16	11/64	4 1/2	11/64	
MS-202-19	5/16	9/32 X 1/2 SLOT	5/16	9/32 X 1/2 SLOT	8 3/16	9/32 X 1/2 SLOT	
MS-202-20	1/4	13/64	5/16	9/32	9/32	N.H.	
MS-202-21	3/16	11/64	3/16	11/64	9/32	N.H.	
MS-202-22	1/4	13/64	1/4	13/64	5/8	11/64	
MS-202-23	1/4	13/64	1/4	13/64	5/8	N.H.	
MS-202-24	1/4	9/32	1/4	7/32	5/8	N.H.	
MS-202-25	1/4	9/32	1/4	9/32	5/8	N.H.	
MS-202-26	3/16	11/64	1/4	1/4	5/8	11/64	
MS-202-27	1/4	1/4	1/4	1/4	5/8	N.H.	
MS-202-28	1/4	1/4	1/4	13/64	5/8	N.H.	
MS-202-29	3/8	13/64	1/4	NH	5/8	NH	
MS-202-30	1/4	13/64	1/4	9/32	3/4	13/64	
MS-202-31	1/4	1/4	1/4	1/4	3/4	1/4	
MS-202-32	9/16	13/64	9/16	13/64	3/4	N.H.	
MS-202-33	3/4	13/64	3/4	13/64	3/8	13/64	
MS-202-34	3/8	7/32	3/8	7/32	1/8	7/32	
MS-202-35	5/16	3/16 X 3/8 SLOT	5/16	3/16 X 3/8 SLOT	8 13/16	3/16 X 3/8 SLOT	
MS-202-36	1/4	9/32	3/16	3/16	1/8	N.H.	
MS-202-37	3/8	13/64	3/8	13/64	1/8	N.H.	
MS-202-38	3/16	13/64	3/16	13/64	1/8	N.H.	
MS-202-39	3/16	11/64	3/16	13/64	1/8	N.H.	.025

REQ. UNIT MODEL PROJECT NO. USED ON DATE

TMC NO.	"A" DIM	"B" DIA.	"C" DIM.	"D" DIA.	"E" DIM.	"F" DIA.	MAT'L THK.
MS-202-40	7/32	9/32	7/32	11/64	19/32	11/64	.025
MS-202-41	1/4	13/64	1/4	13/64	1 1/16	15/64	.025
MS-202-42	1/4	11/64	1/4	5/32	1 1/16	NH	.025
MS-202-43	1/4	11/64	1/4	11/64	1 1/4	11/64	.025
MS-202-44	1/4	11/64	1/4	11/64	1 1/4	NH	.025
MS-202-45	1/4	1/8	1/4	9/32	1 1/4	NH	.025



NOMENCLATURE AS FOLLOWS:

MS-202-1-4.500

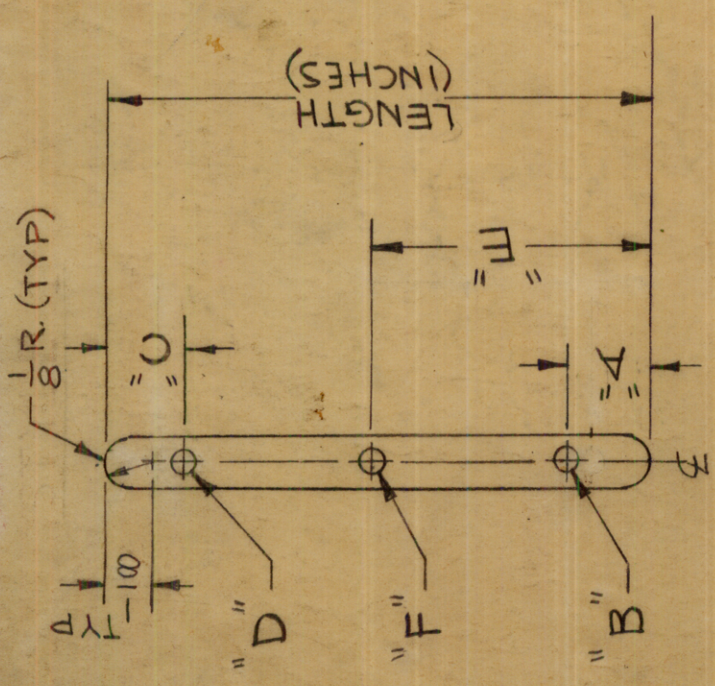
TMC DWG NO. DRILLING PLAN CODE LENGTH (inches)

NOTE: NH = NO HOLE

REQ. ITEM	PART NO.	DESCRIPTION	SYMBOL
SEE CHART		THE TECHNICAL MATERIEL CORP. MAMARONECK.	
COPPER		LEAD, CONNECTING, 7/16" WIDE	
OFHC SOFT			
TYPE & TEMPER	HEAT TREAT. SPEC.	DRAWN	FINAL APPROVAL
S245 Silver Plate	.0003	AAH	MS-202 AB
FINISH & SPEC. NO.		ELEC. DES. APP.	MECH. DES. APP.
		16 10-23-57	MS-202 AB

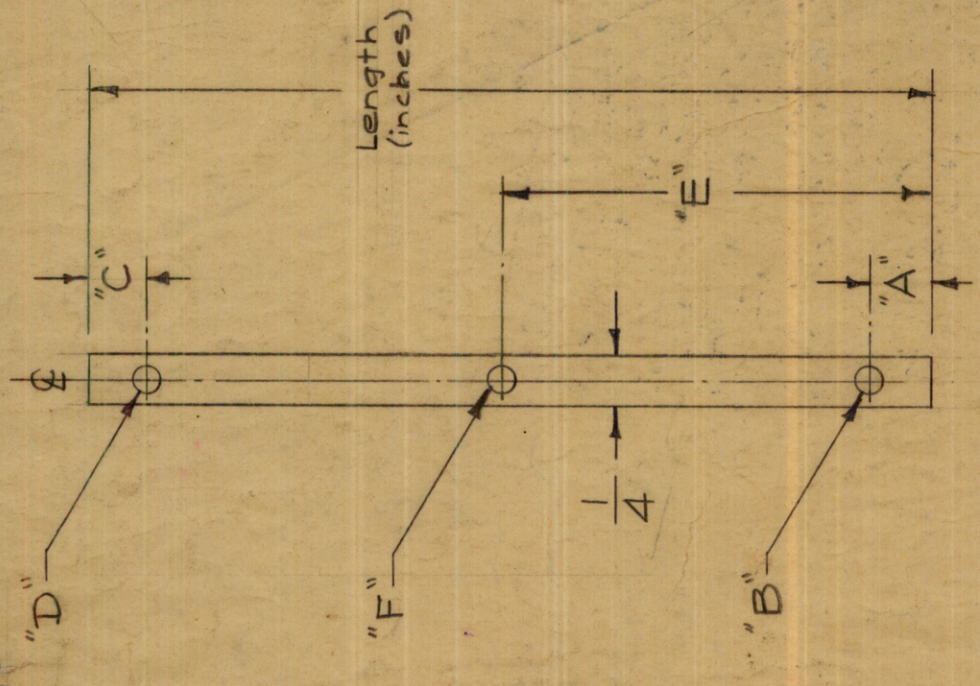
STANDARD DRAWING

STYLE 1



NOTICE TO PERSONS RECEIVING THIS DRAWING
 THE TECHNICAL MATERIAL CORPORATION claims
 proprietary right in the material disclosed herein.
 This drawing is issued in confidence for engineering
 information only and shall not be reproduced or used
 to manufacture or for any other purpose without per-
 mission from THE TECHNICAL MATERIAL CORPORATION.
 This drawing is loaned for mutual
 assistance and shall be returned to the property of
 THE TECHNICAL MATERIAL CORPORATION
 MAMARONECK, NEW YORK

STYLE 2



TYPE DESIGNATION TO BE AS FOLLOWS:

MS-203-1-4.500 N
 TMC DWG. NO. DRILLING PLAN CODE (See Chart)
 LENGTH (inches)
 FINISH SUFFIX CODE (USE ONLY WHEN NO FINISH IS REQ'D)

* NOTE: WHEN PART NO. DOES NOT HAVE FINISH SUFFIX CODE, S245 WILL BE STANDARD FINISH.

NOTE: THE LENGTH REQ. WILL BE FOUND ON THE MATERIAL LIST WHERE THIS ITEM IS USED.

TMC NO.	"A" DIM.	"B" DIAM.	"C" DIM.	"D" DIAM.	"E" DIM.	"F" DIAM.	STYLE
MS-203-1		N.H.		N.H.		N.H.	2
MS-203-2	3/16	11/64		N.H.		N.H.	2
MS-203-3	3/16	9/64		N.H.		N.H.	2
MS-203-4	3/16	9/64		N.H.		N.H.	2
MS-203-5	3/16	9/64		N.H.		N.H.	2
MS-203-6	3/16	11/64	3/16	11/64		N.H.	2
MS-203-7	3/16	11/64		N.H.	1 1/16	11/64	2
MS-203-8	3/16	5/32	3/16	5/32		N.H.	2
MS-203-9	1/4	17/64		N.H.		N.H.	2
MS-203-10	1/4	5/32	1/4	3/32		N.H.	1
MS-203-11	1/8	11/64	1/8	11/64		N.H.	1
MS-203-12	1/8	11/64	1/8	11/64	1"	11/64	1
MS-203-13	3/16	5/32	3/16	5/32	1"	5/32	1
MS-203-14	1/4	11/64	1/8	11/64		NH	1
MS-203-15	3/16	5/32	3/16	5/32		NH	1
MS-203-16	3/16	11/64	3/16	11/64		NH	1

NOTE: N.H. = No Hole

REQ. ITEM	PART NO.	DESCRIPTION	SYMBOL
	.025 THK.	THE TECHNICAL MATERIAL CORP.	
	COPPER	MAMARONECK, NEW YORK	
		LEAD, CONNECTING, 1/4" WIDE	
OFHC			
TYPE & TEMPER	HEAT TREAT. SPEC.	CHECKED	FINAL APPROVAL
*S245 SILVER PLATE		DRAWN	
.0003			
FINISH & SPEC. NO.		ELEC. DES. APP. MECH. DES. APP.	

REQ. PER UNIT	1 ST MODEL	PROJECT NO.	ASSY. NO.	DATE
	ATS			

ISSUE	ITEM	CHANGED FROM	DATE	CH. NO.	DRAFTS	CHECKER	ENG. APP.
T		ADD - 15¢ - 16	7-8-63	18975			FB10
S		ADD - 14. ADD "N" FINISH SUFFIX CODE & * NOTE.	12-9-66	17432	RME		
R		ION TYPE DESIGN LENGTH WAS 4.50	6-28-66	CLEBIA	CGL		
P		MS-203-13 ADDED	8-8-66	15926	UPU		
N		MATL. WAS COMM SOFT	10/12/65	14958	M.V.V.		
M		MS-203-12 ADDED - 11 1/2" DIA WAS 5/32	9/27/65	14820	M.V.V.		

TOLERANCES
 DEC. DIM. ±
 FRAC. DIM. ±
 ANGULAR DIM. ±

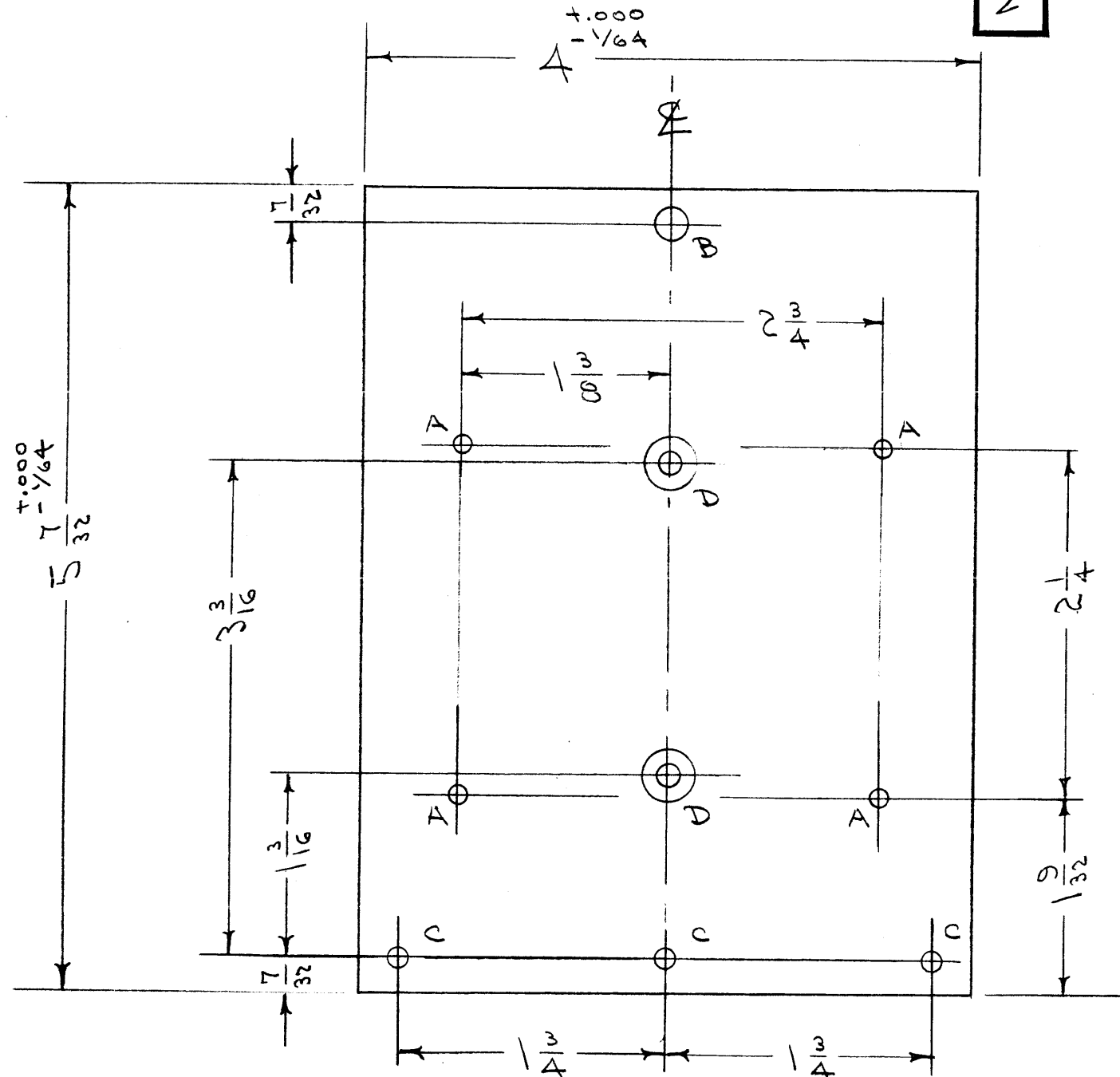
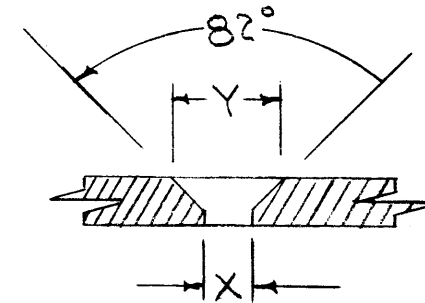
SCALE:
 MAXIMUM ALLOWABLE TOLERANCES HAVE BEEN DETERMINED AND ANY DEVIATIONS WILL BE CAUSE FOR REJECTION.
 REMOVE ALL BURRS AND SHARP EDGES

IF IT IS FOUND DESIRABLE TO CHANGE ANY TOLERANCE OR OTHER DETAIL SPECIFIED ON THIS DRAWING NOTIFY THE PURCHASER PROMPTLY.

MAXIMUM ALLOWABLE TOLERANCES HAVE BEEN DETERMINED AND DEVIATIONS WILL BE CAUSE FOR REJECTION. REMOVE ALL BURRS AND SHARP EDGES

MS-210 F

- A - #38 (.101) D. 4 HOLES REQ.
- B - 1/4 (.250) D. 1 " "
- C - 1/8 (.125) DIA 3 " "
- D - SEE CHART 2 " "



HOLE	DIM	SIZE
D	X	#27 (.144)
	Y	.284

NOTICE TO PERSONS RECEIVING THIS DRAWING

THE TECHNICAL MATERIEL CORPORATION claims proprietary right in the material disclosed hereon. This drawing is issued in confidence for engineering information only and may not be reproduced or used to manufacture anything shown hereon without permission from THE TECHNICAL MATERIEL CORPORATION to the user. This drawing is loaned for mutual assistance and is subject to recall at any time.

Property of:
THE TECHNICAL MATERIEL CORPORATION
MAMARONECK, NEW YORK

NOTE: FINISH - (ALL SURFACES)
S-404 YELLOW IRIDITE
S-114 ZINC CHROMATE PRIMER
S-115 SMOOTH GRAY ENAMEL
OR PRIME & PAINT TO CUSTOMERS SPEC.

ISSUE	ITEM	CHANGED FROM	DATE	CN. NO.	DRAFTS	CHECKER	ENG. APP.
F	1	"C" HOLES REVISED DWG UPDATED	10/3/63	10131	AD	SAB	[Signature]
E	1	S-404 WAS S-101	11/1/59	1001	AB	[Signature]	EMN
D	1	1/4 WAS 7/32	5/15/56	4	JAB	[Signature]	[Signature]
C	1	"C" SUNK DETAIL ADDED	5/15/56	3	[Signature]	[Signature]	[Signature]

TOLERANCES		SCALE:
ALL OTHERS	DEC. DIM. ± FRAC. DIM. ± 1/64 ANGULAR DIM. ±	DRILL, PUNCH, COMMERCIAL STOCK SIZES AND MANUFACTURERS TOLERANCES ARE NOT INCLUDED.

REQ. PER UNIT	MODEL	PROJECT NO.	ASSY. NO.	DATE
1	XFK		A-709	5-19-55
USED ON				

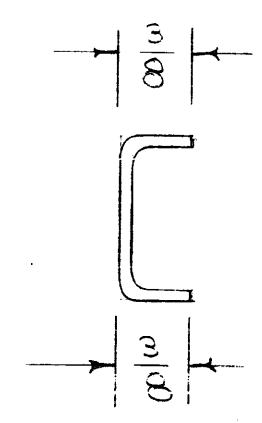
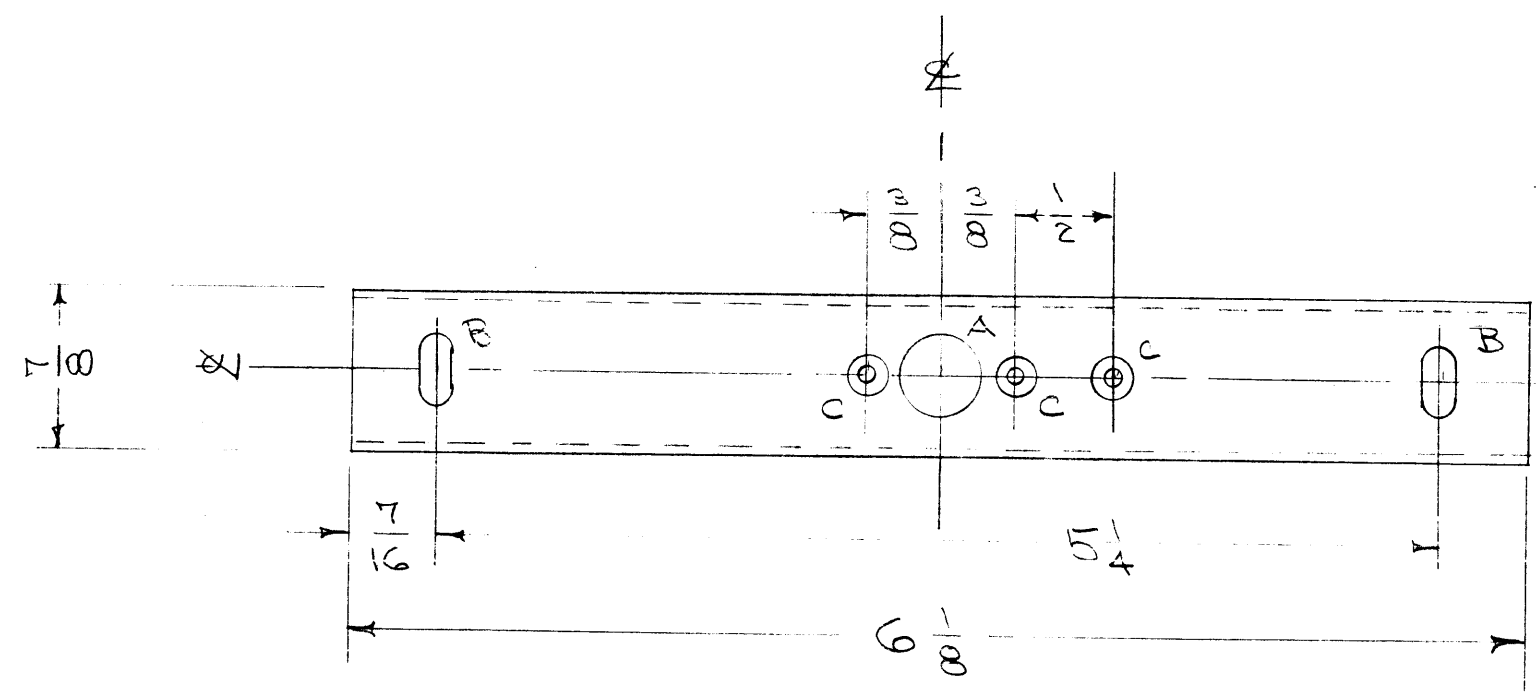
REQ. ITEM	PART NO.	DESCRIPTION	SYMBOL
	3/16 THK.	THE TECHNICAL MATERIEL CORP.	
	STOCK SIZE	MAMARONECK, NEW YORK	
	ALUMINUM	DOOR, FRONT	
	MATERIAL WEIGHT PER PC.	XFK	
	2024 T3		
	TYPE & TEMPER	ORD. 5-19-55	[Signature]
	HEAT TREAT. SPEC.	DRAWN	ELEC. DES. APP. MECH. DES. APP.
	SEE NOTE	CHECKED	FINAL APPROVAL
	FINISH & SPEC. NO.		MS-210 F

IF IT IS FOUND DESIRABLE TO CHANGE ANY TOLERANCE OR OTHER DETAIL SPECIFIED ON THIS DRAWING NOTIFY THE PURCHASER PROMPTLY.

MAXIMUM ALLOWABLE TOLERANCES HAVE BEEN DETERMINED AND DEVIATIONS WILL BE CAUSE FOR REJECTION. REMOVE ALL BURRS AND SHARP EDGES

MS-211 C

A - 3/8 (.375) D. 1 HOLE REQ.
 B - 1/64 x 1/32 SLOT. 2 SLOTS "
 C - DRILL & SINK 3-48 FHS - 3 HOLES REQ.



NOTICE TO PERSONS RECEIVING THIS DRAWING

THE TECHNICAL MATERIEL CORPORATION claims proprietary right in the material disclosed hereon. This drawing is issued in confidence for engineering information only and may not be reproduced or used to manufacture anything shown hereon without permission from THE TECHNICAL MATERIEL CORPORATION to the user. This drawing is loaned for mutual assistance and is subject to recall at any time.

Property of:
 THE TECHNICAL MATERIEL CORPORATION
 MAMARONECK, NEW YORK

C	1	S-404 WAS S-101	2/1/55	1001	RL		EMN
B	2	3-48 WAS 4-40	8/1/55	2	CS	MS	MS
		REDRAWN					
ISSUE	ITEM	CHANGED FROM	DATE	CN. NO.	DRAFTS	CHECKER	ENG. APP.

TOLERANCES		SCALE:
ALL OTHERS	DEC. DIM. ± FRAC. DIM. ± ANGULAR DIM. ±	DRILL, PUNCH, COMMERCIAL STOCK SIZES AND MANUFACTURERS TOLERANCES ARE NOT INCLUDED.

1	XFK	A-685	8-15-55
REQ. PER UNIT	MODEL	PROJECT NO.	DATE
USED ON			

REQ. ITEM	PART NO.	DESCRIPTION	SYMBOL
	.051	THE TECHNICAL MATERIEL CORP. MAMARONECK, NEW YORK	
STOCK SIZE		BRACKET, DOOR LATCH	XFK
ALUMINUM	—		
MATERIAL	WEIGHT PER PC.		
5052	H32		
TYPE & TEMPER		DRN	MECH. DES. APP.
		ELEC. DES. APP.	
HEAT TREAT. SPEC.		CHECKED	FINAL APPROVAL
S-404 YELLOW IRIDITE			
FINISH & SPEC. NO.			

MS-211 C

IF IT IS FOUND DESIRABLE TO CHANGE ANY TOLERANCE OR OTHER DETAIL SPECIFIED ON THIS DRAWING NOTIFY THE PURCHASER PROMPTLY.

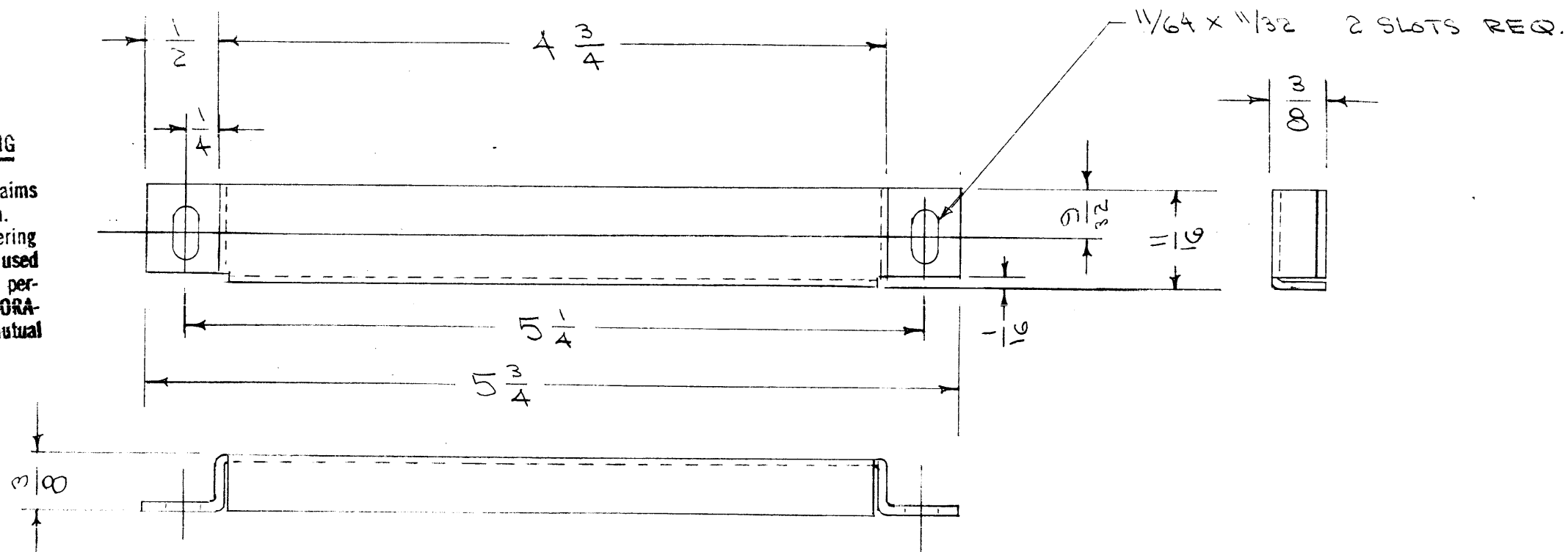
MAXIMUM ALLOWABLE TOLERANCES HAVE BEEN DETERMINED AND DEVIATIONS WILL BE CAUSE FOR REJECTION. REMOVE ALL BURRS AND SHARP EDGES

C
MS-217

NOTICE TO PERSONS RECEIVING THIS DRAWING

THE TECHNICAL MATERIEL CORPORATION claims proprietary right in the material disclosed hereon. This drawing is issued in confidence for engineering information only and may not be reproduced or used to manufacture anything shown hereon without permission from THE TECHNICAL MATERIEL CORPORATION to the user. This drawing is loaned for mutual assistance and is subject to recall at any time.

Property of:
THE TECHNICAL MATERIEL CORPORATION
MAMARONECK, NEW YORK



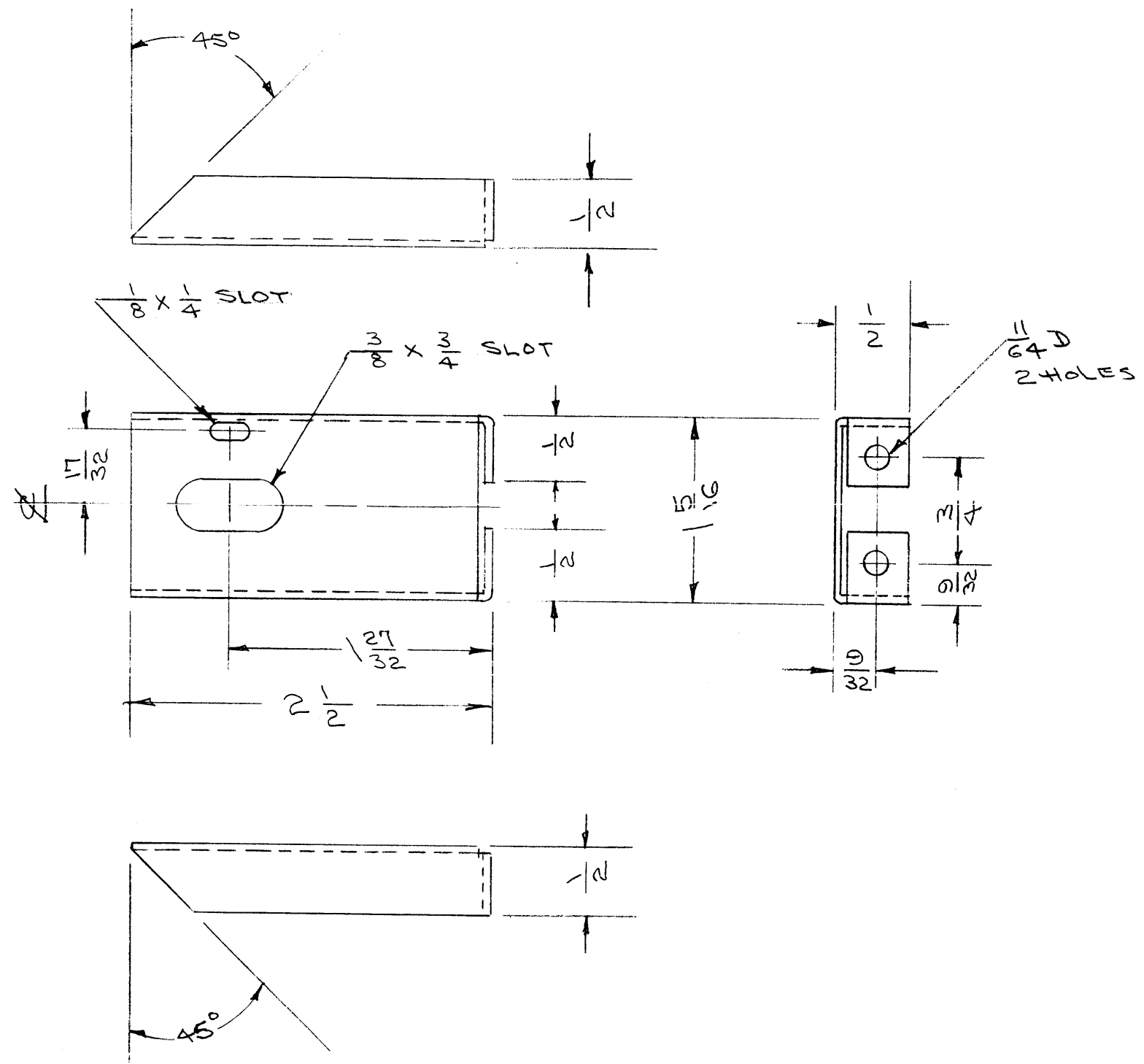
ISSUE	ITEM	CHANGED FROM	DATE	CN. NO.	DRAFTS	CHECKER	ENG. APP.
C	1	S-404 WAS S-101	8/11/59	1001	FB		EMN
B	2	DIMENSIONING CHANGED	8/11/59	2	CS	JAD	
	1	REDRAWN					

TOLERANCES		SCALE:
ALL OTHERS	DEC. DIM. \pm FRAC. DIM. \pm ANGULAR DIM. \pm	DRILL, PUNCH, COMMERCIAL STOCK SIZES AND MANUFACTURERS TOLERANCES ARE NOT INCLUDED.

REQ. PER UNIT	MODEL	PROJECT NO.	ASS'Y. NO.	DATE
1	XFK		A-367	8-2-59

REQ. ITEM	PART NO.	DESCRIPTION	SYMBOL
.051		THE TECHNICAL MATERIEL CORP., MAMARONECK, NEW YORK	
ALUMINUM	—H—	SPACE COVER, FRONT	
MATERIAL	WEIGHT PER PC.	XFK	
5052	4 32		
TYPE & TEMPER		ADD. BLISTER	WE
HEAT TREAT. SPEC.		DRAWN	ELEC. DES. APP. MECH. DES. APP.
S-404 YELLOW IRIDITE		CHECKED	FINAL APPROVAL
FINISH & SPEC. NO.			MS-217 C

MS-219 F



NOTICE TO PERSONS RECEIVING THIS DRAWING

THE TECHNICAL MATERIEL CORPORATION claims proprietary right in the material disclosed hereon. This drawing is issued in confidence for engineering information only and may not be reproduced or used to manufacture anything shown hereon without permission from THE TECHNICAL MATERIEL CORPORATION to the user. This drawing is loaned for mutual assistance and is subject to recall at any time.

Property of:
THE TECHNICAL MATERIEL CORPORATION
MAMARONECK, NEW YORK

ISSUE	ITEM	CHANGED FROM	DATE	CH. NO.	DRAFTS	CHECKER	ENG. APP.
F	1	S-404 WAS S-101	12/11/59	1001	AB		EMN
-	-	REDRAWN - ORIG. WAS LOST - NO REV.	3/13/58	-	JAD	16	<i>[Signature]</i>
E	2	$\frac{1}{8} \times \frac{1}{4}$ WAS $\frac{9}{64}$	8/16/55	5	CDD	JAD	WDC
	1	REDRAWN					

TOLERANCES		SCALE:	
DEC. DIM. \pm		MAXIMUM ALLOWABLE TOLERANCES HAVE BEEN DETERMINED AND ANY DEVIATIONS WILL BE CAUSE FOR REJECTION.	
FRAC. DIM. \pm $\frac{1}{64}$		REMOVE ALL BURRS AND SHARP EDGES	
ANGULAR DIM. \pm 2°			

1	XFK	A-683	8/16/55
REQ. PER UNIT	MODEL	PROJECT NO.	ASS'Y. NO.
USED ON			

REQ. ITEM	PART NO.	DESCRIPTION	SYMBOL
	.051	THE TECHNICAL MATERIEL CORP. MAMARONECK, NEW YORK	
	STOCK SIZE		
	ALUMINUM	BRACKET, SWITCH	
	MATERIAL	XFK	
5052-H32			
TYPE & TEMPER	HEAT TREAT. SPEC.	REDRAWN	CHECKED
S-404 YELLOW IRIDITE			
FINISH & SPEC. NO.	ELEC. DES. APP.	MECH. DES. APP.	
			MS-219 F

IF IT IS FOUND DESIRABLE TO CHANGE ANY TOLERANCE OR OTHER DETAIL SPECIFIED ON THIS DRAWING NOTIFY THE PURCHASER PROMPTLY.

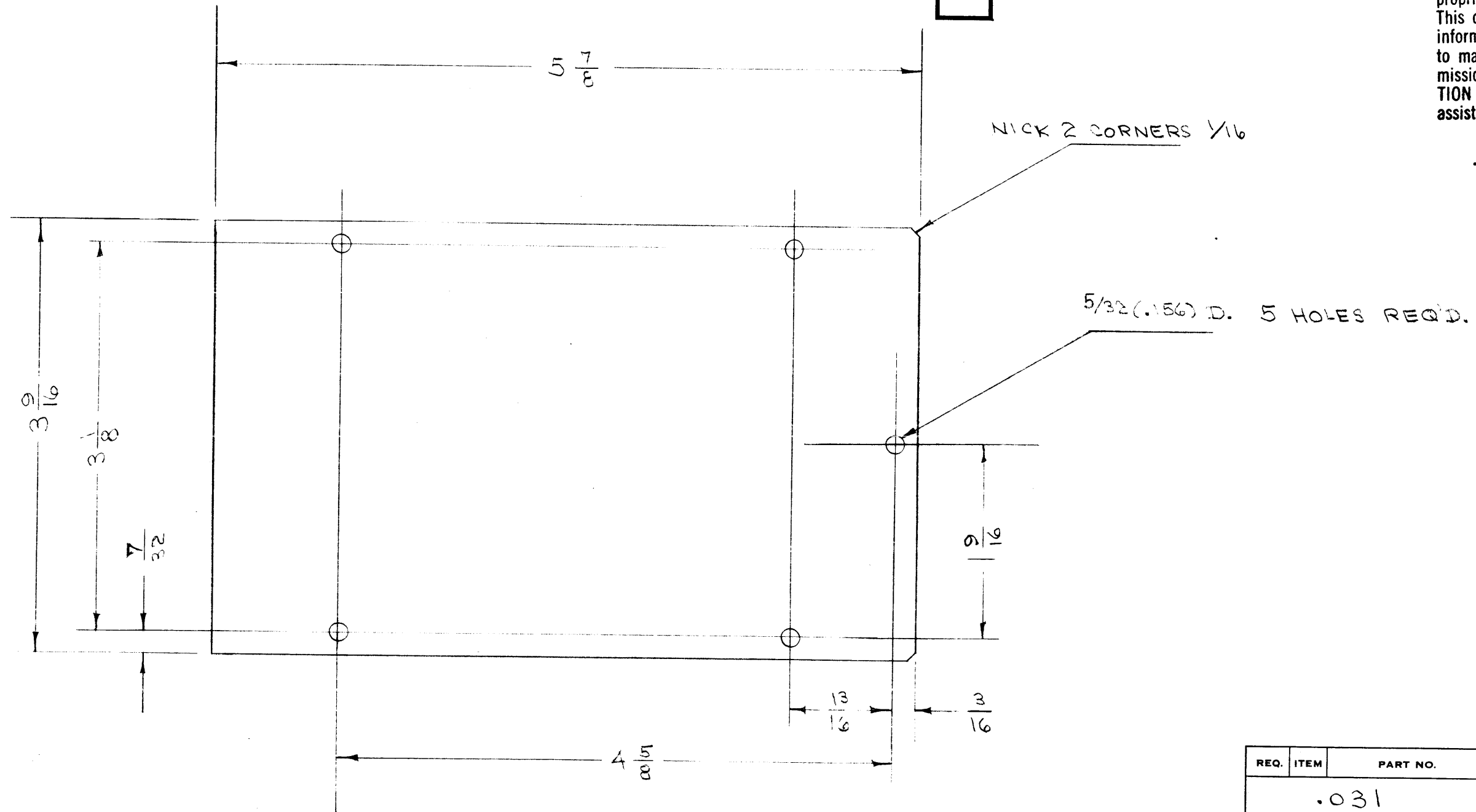
MAXIMUM ALLOWABLE TOLERANCES HAVE BEEN DETERMINED AND DEVIATIONS WILL BE CAUSE FOR REJECTION. REMOVE ALL BURRS AND SHARP EDGES

MS-232 A

NOTICE TO PERSONS RECEIVING THIS DRAWING

THE TECHNICAL MATERIEL CORPORATION claims proprietary right in the material disclosed hereon. This drawing is issued in confidence for engineering information only and may not be reproduced or used to manufacture anything shown hereon without permission from THE TECHNICAL MATERIEL CORPORATION to the user. This drawing is loaned for mutual assistance and is subject to recall at any time.

Property of:
THE TECHNICAL MATERIEL CORPORATION
MAMARONECK, NEW YORK



REQ.	ITEM	PART NO.	DESCRIPTION	SYMBOL
		.031	THE TECHNICAL MATERIEL CORP.	
		STOCK SIZE	MAMARONECK, NEW YORK	
	ALUMINUM		SHIELD COVER	
	MATERIAL	WEIGHT PER PC.		
	523-H32			
	TYPE & TEMPER		CD.D. 5/5/53	
	HEAT TREAT. SPEC.		DRAWN	ELEC. DES. APP.
			MECH. DES. APP.	
			HAID. 5/8/53	
			CHECKED	FINAL APPROVAL
		S-404 YELLOW IRIDITE		
		FINISH & SPEC. NO.		

ISSUE	ITEM	CHANGED FROM	DATE	CN. NO.	DRAFTS	CHECKER	ENG. APP.
A	1	S-404 WAS S-101	12/11/59	1001	AB		EMN

TOLERANCES: DEC. DIM. \pm FRACTIONAL DIM. \pm 1/64 ANGULAR DIM. \pm

SCALE: DRILL, PUNCH, COMMERCIAL STOCK SIZES AND MANUFACTURERS TOLERANCES ARE NOT INCLUDED.

DCU	200		9-25-51
MODEL	PROJECT NO.	ASS'Y. NO.	DATE

IF IT IS FOUND DESIRABLE TO CHANGE ANY TOLERANCE OR OTHER DETAIL SPECIFIED ON THIS DRAWING NOTIFY THE PURCHASER PROMPTLY.

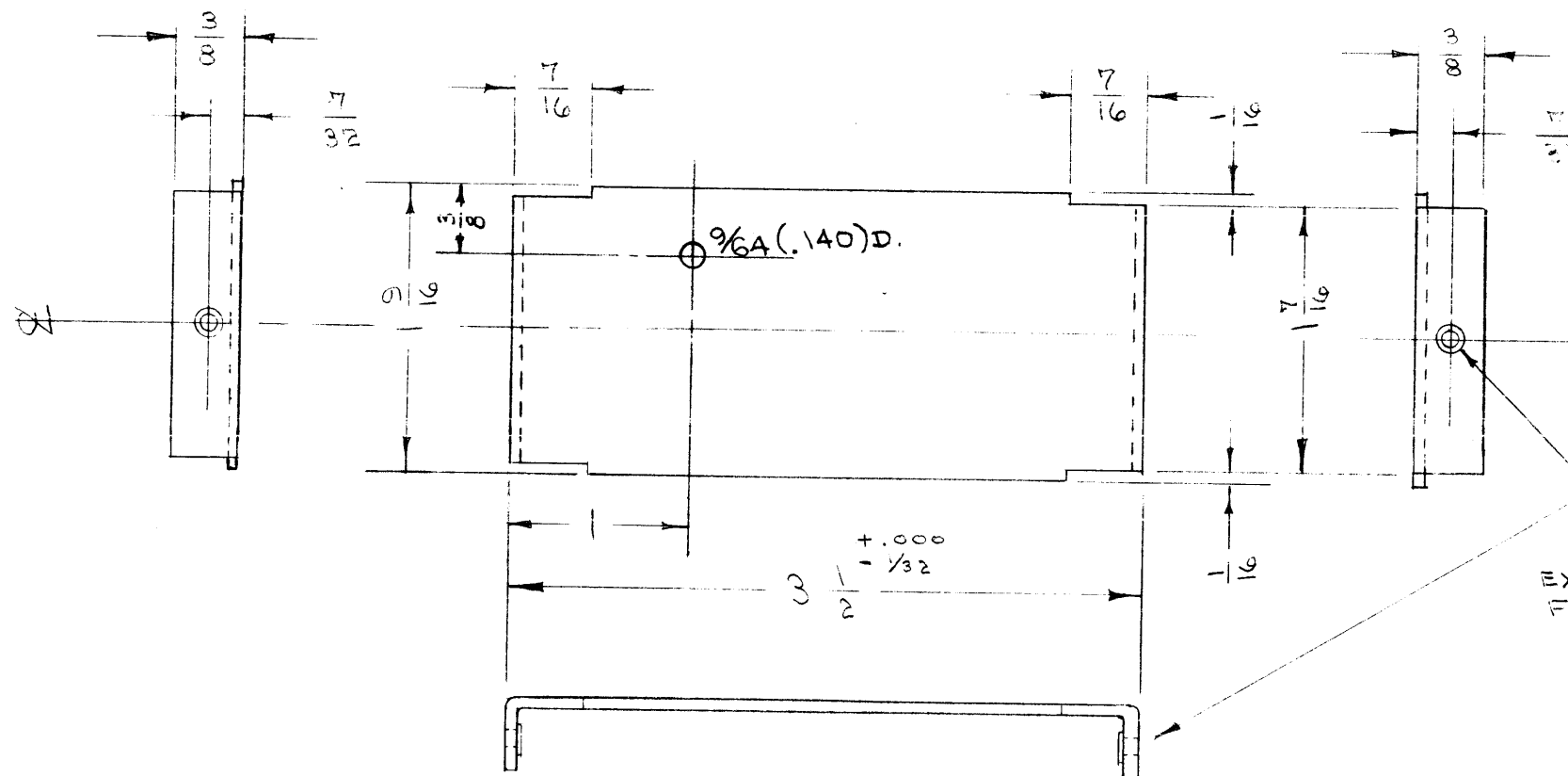
MAXIMUM ALLOWABLE TOLERANCES HAVE BEEN DETERMINED AND DEVIATIONS WILL BE CAUSE FOR REJECTION. REMOVE ALL BURRS AND SHARP EDGES

MS-233 B

NOTICE TO PERSONS RECEIVING THIS DRAWING

THE TECHNICAL MATERIEL CORPORATION claims proprietary right in the material disclosed hereon. This drawing is issued in confidence for engineering information only and may not be reproduced or used to manufacture anything shown hereon without permission from THE TECHNICAL MATERIEL CORPORATION to the user. This drawing is loaned for mutual assistance and is subject to recall at any time.

Property of:
THE TECHNICAL MATERIEL CORPORATION
MAMARONECK, NEW YORK



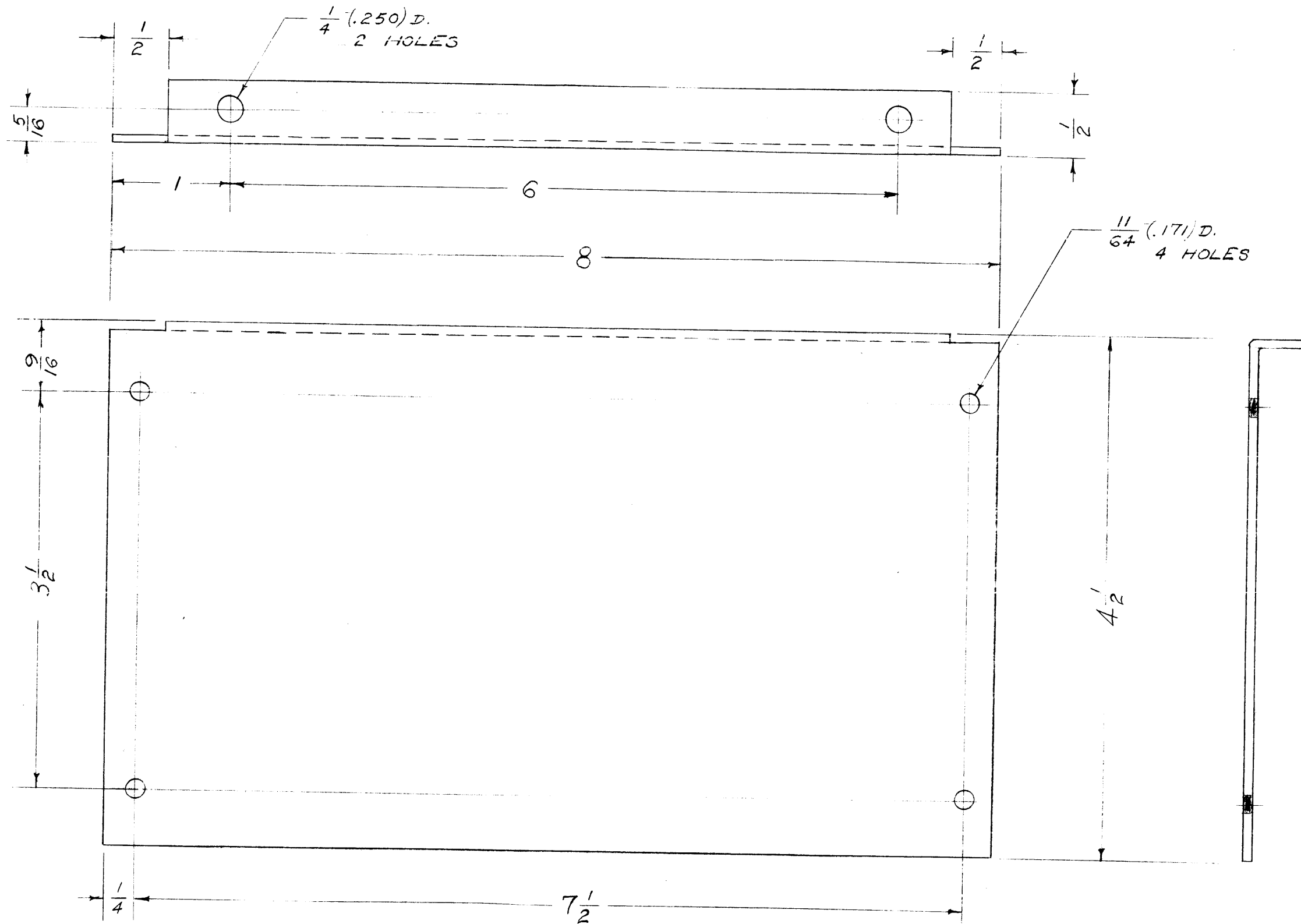
EXTRUDE INWARD AS SHOWN. TAP FOR A-40. 2 HOLES REQ'D.

B	1	S-404 WAS S-101	12/11/54	1001	AB	EMN	
A	1	HOLE POSITION CHANGED	12/30/53	1	VB	JAD	
ISSUE	ITEM	CHANGED FROM	DATE	CN. NO.	DRAFTS	CHECKER	ENG. APP.
TOLERANCES		SCALE: #					
ALL OTHERS	DEC. DIM. ±	DRILL, PUNCH, COMMERCIAL STOCK SIZES AND MANUFACTURERS TOLERANCES ARE NOT INCLUDED.					
	FRAC. DIM. ± 1/64						
	ANGULAR DIM. ±						

DCU	200	9-14-51
MODEL	PROJECT NO.	ASS'Y. NO.
		DATE
USED ON		

REQ.	ITEM	PART NO.	DESCRIPTION	SYMBOL
		.051	THE TECHNICAL MATERIEL CORP.	
		STOCK SIZE	MAMARONECK. NEW YORK	
	ALUMINUM	#	SHIELD PARTITION	
	MATERIAL	WEIGHT PER PC.		
	52S-H32			
	TYPE & TEMPER		C.D.D. 5/6/53	
			DRAWN	ELEC. DES. APP.
			MECH. DES. APP.	
	HEAT TREAT. SPEC.		JAD 5/8/53	
			CHECKED	FINAL APPROVAL
	S-404 YELLOW IRIDITE			
	FINISH & SPEC. NO.			
			MS-233	B

MS-240 A



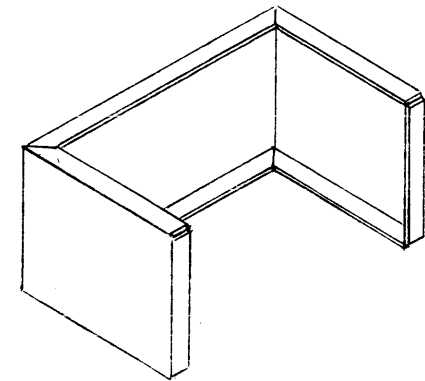
NOTICE TO PERSONS RECEIVING THIS DRAWING
 THE TECHNICAL MATERIEL CORPORATION claims proprietary right in the material disclosed hereon. This drawing is issued in confidence for engineering information only and may not be reproduced or used to manufacture anything shown hereon without permission from THE TECHNICAL MATERIEL CORPORATION to the user. This drawing is loaned for mutual assistance and is subject to recall at any time.
 Property of:
 THE TECHNICAL MATERIEL CORPORATION
 MAMARONECK, NEW YORK

ISSUE	ITEM	CHANGED FROM	DATE	CH. NO.	DRAFTS	CHECKER	ENG. APP.
A	1	S-404 WAS S-101	12/11/59	1001	FB		EMN
#	#	REDRAWN NO CHANGE	8/23/55	#	AB		WJ

TOLERANCES		SCALE:
DEC. DIM. ±		MAXIMUM ALLOWABLE TOLERANCES HAVE BEEN DETERMINED AND ANY DEVIATIONS WILL BE CAUSE FOR REJECTION. REMOVE ALL BURRS AND SHARP EDGES
FRAC. DIM. ±		
ANGULAR DIM. ±		

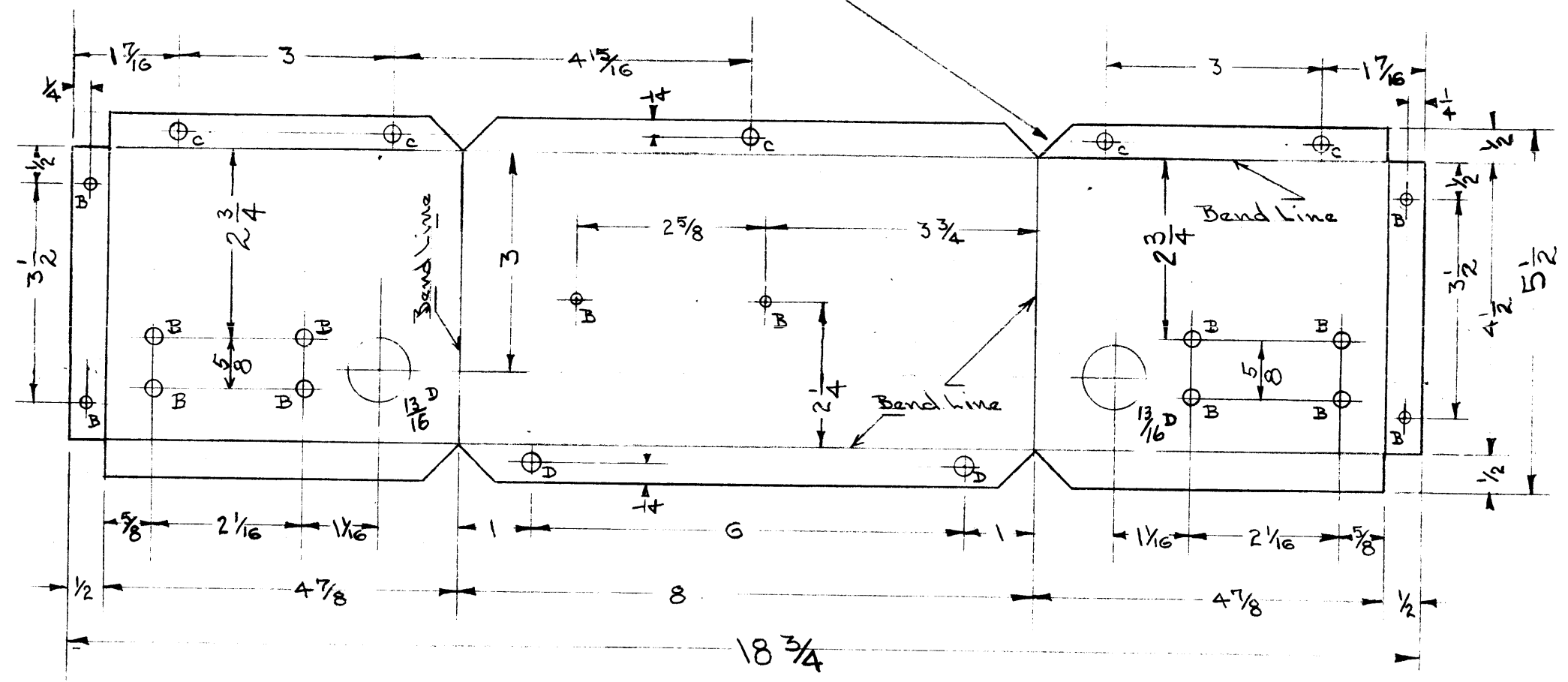
REQ. PER UNIT	MODEL	PROJECT NO.	ASS'Y. NO.	DATE
1	DCP			4-15-51

REQ. ITEM	PART NO.	DESCRIPTION	SYMBOL
	.051	THE TECHNICAL MATERIEL CORP.	
	STOCK SIZE	MAMARONECK, NEW YORK	
	ALUMINUM	TOP COVER	
	MATERIAL	POWER CONTROL PANEL - DCP	
52S-H32	—H—	WJ 8-23-55	WJ
TYPE & TEMPER	HEAT TREAT. SPEC.	DRAWN	CHECKED
S-404 YELLOW IRIDITE		WJ	WJ
FINISH & SPEC. NO.	ELEC. DES. APP.	MECH. DES. APP.	MS-240 A



Bend All Flanges
Up 90°

Make All Notches
For Right Angle Bends



NOTICE TO PERSONS RECEIVING THIS DRAWING
 THE TECHNICAL MATERIEL CORPORATION claims
 proprietary right in the material disclosed hereon.
 This drawing is issued in confidence for engineering
 information only and may not be reproduced or used
 to manufacture anything shown hereon without per-
 mission from THE TECHNICAL MATERIEL CORPORA-
 TION to the user. This drawing is loaned for mutual
 assistance and is subject to recall at any time.

Property of:
 THE TECHNICAL MATERIEL CORPORATION
 MAMARONECK, NEW YORK

SUPERCEDES BMS031

- B = 1/64 - 14 Holes
- C = 13/64 - 5 Holes
- D = 1/4 - 2 Holes

Material: 525-1/4 Hard Alum .052 GA.
 Required: 1 Per Unit.
 Finish : Alkali Etch & Lacquer.

CONTROL BOX	
POWER CONTROL PANEL	
MODEL DCP	
THE TECHNICAL MATERIEL CORPORATION	
MAMARONECK, NEW YORK	
DATE	5-4-51
BY	[Signature]
CF	[Signature]
NO	MS-242

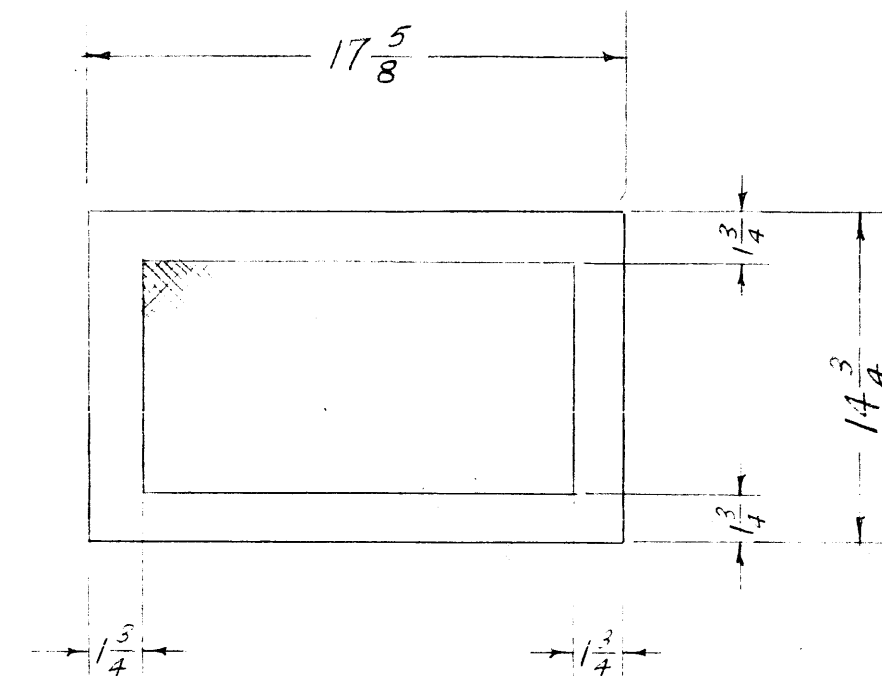
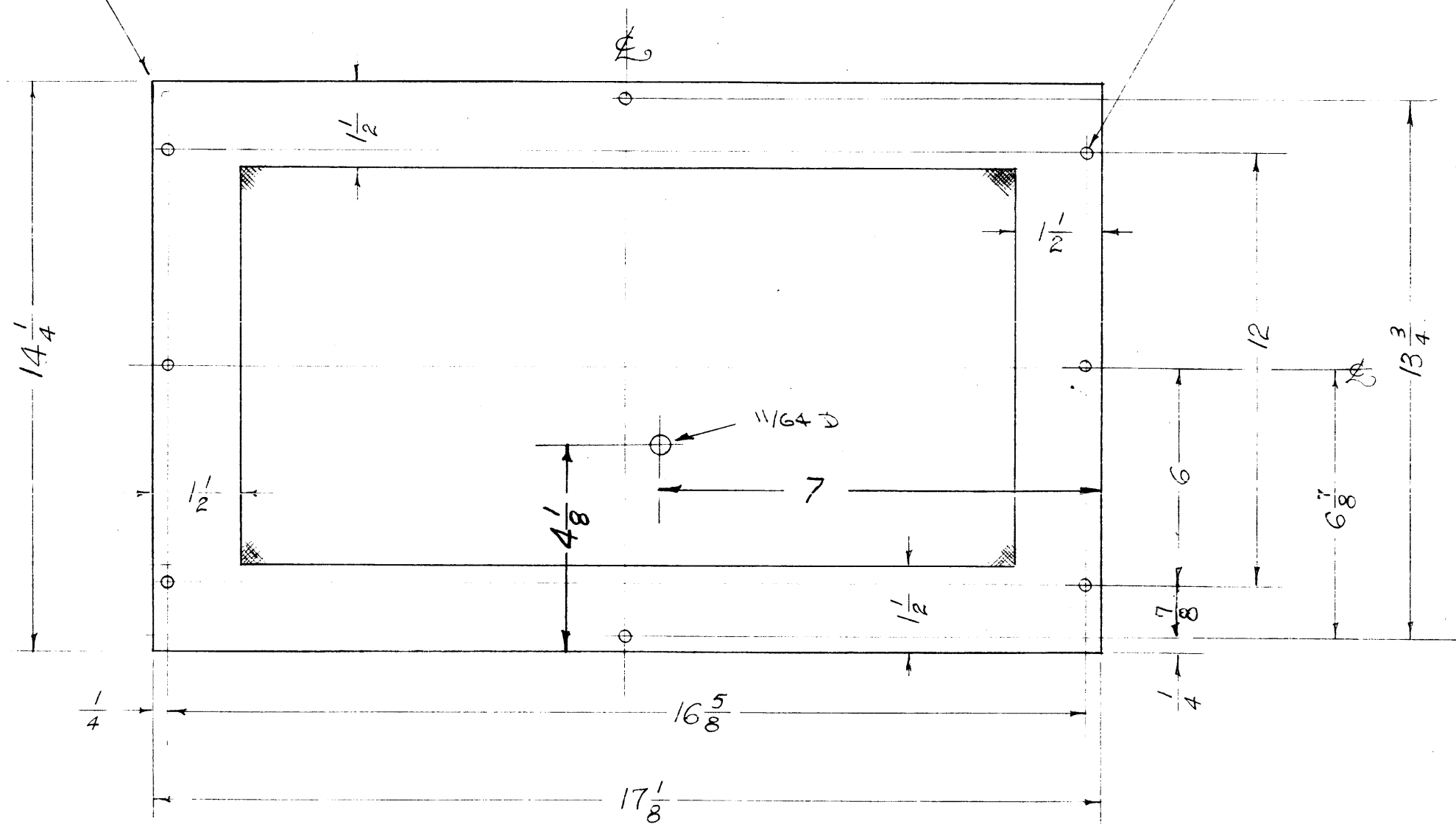
IF IT IS FOUND DESIRABLE TO CHANGE ANY TOLERANCE OR OTHER DETAIL SPECIFIED ON THIS DRAWING NOTIFY THE PURCHASER PROMPTLY.

MAXIMUM ALLOWABLE TOLERANCES HAVE BEEN DETERMINED AND DEVIATIONS WILL BE CAUSE FOR REJECTION. REMOVE ALL BURRS AND SHARP EDGES

MS-265 C

NICK ALL CORNERS SLIGHTLY

$\frac{3}{16}$ (.187) D. 8 HOLES



BLANK LAYOUT

PERFORATION-.072 D. HOLES ON 1/8" CENTERS (STAGGERED)

C	1	S-404 WAS S-101	12/11/59	1001	MB		EMN
B	1	Perforation Info. Added	10/13/59	1417	16		
A	1	DIM. ADDED (7" x 4 1/8")	12/3/56	1	15		
#	#	REDRAWN NO CHANGE		#	18		
ISSUE	ITEM	CHANGED FROM	DATE	CN. NO.	DRAFTS	CHECKER	ENG. APP.

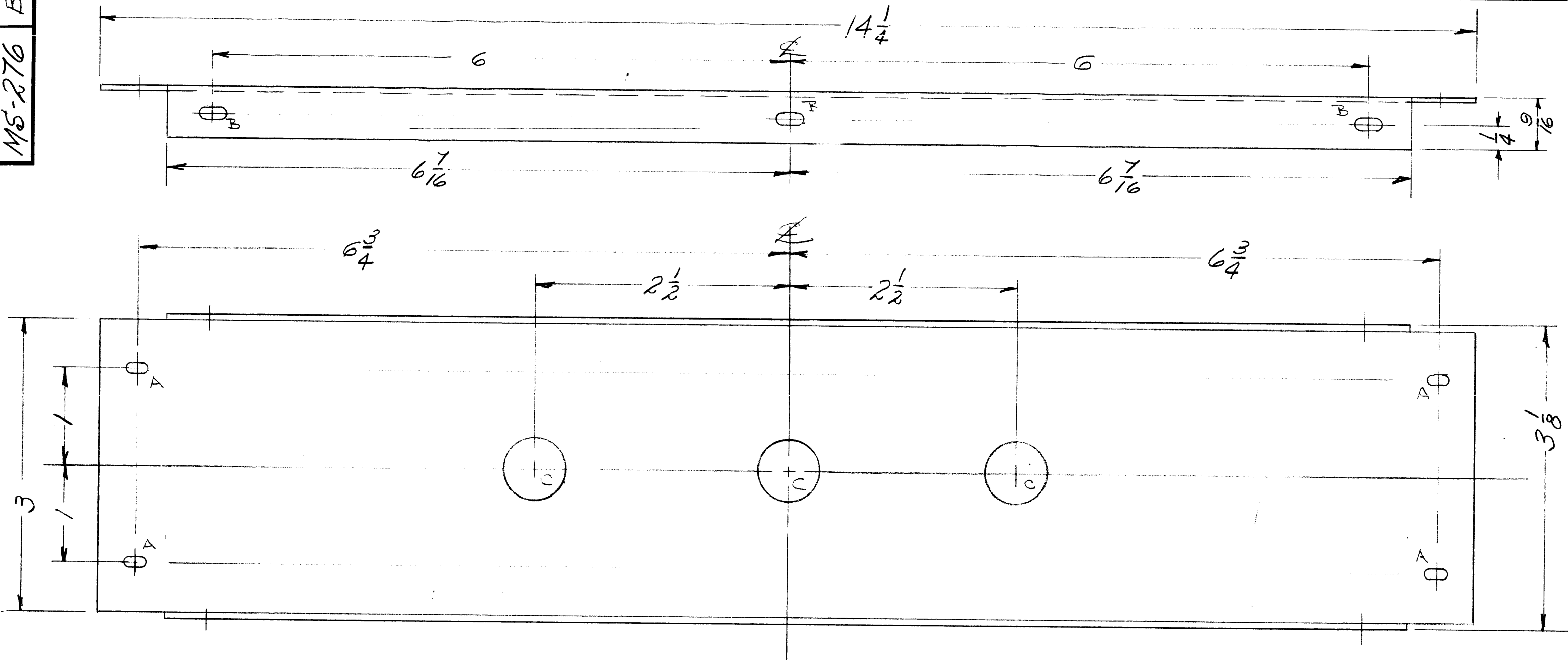
TOLERANCES		SCALE:
ALL OTHERS	DEC. DIM. ± FRAC. DIM. ± 1/64 ANGULAR DIM. ±	DRILL, PUNCH, COMMERCIAL STOCK SIZES AND MANUFACTURERS TOLERANCES ARE NOT INCLUDED.

1	CFA	PROJECT NO.	ASSY. NO.	DATE
REQ. PER UNIT	MODEL	PROJECT NO.	ASSY. NO.	DATE

REQ. ITEM	PART NO.	DESCRIPTION	SYMBOL
	.051	THE TECHNICAL MATERIEL CORP.	
	STOCK SIZE	MAMARONECK, NEW YORK	
ALUMINUM	#	TOP COVER	
MATERIAL	WEIGHT PER PC.	CFA	
TYPE & TEMPER		AB. 8-16-55	
		DRAWN	ELEC. DES. APP. MECH. DES. APP.
HEAT TREAT. SPEC.		CHECKED	FINAL APPROVAL
S-404 YELLOW IRIDITE			
FINISH & SPEC. NO.			

MS-265 C

MS-276 B



HOLE LEGEND

- A - $\frac{11}{64} \times \frac{11}{32}$ SLOTS - 4 REQ.
- B - $\frac{13}{64} \times \frac{13}{32}$ SLOTS - 2 REQ.
- C - $5/8$ DIA. 3 REQ.

ISSUE	ITEM	CHAN ED FROM	DATE	CH. NO.	DRAFTS	CHECKER	ENG. APP.
B	1	Redrawn - NO Mech. Chg. - Bents Added	7/1/58	1			

TOLERANCES

DEC. DIM. \pm

FRAC. DIM. $\pm \frac{1}{64}$

ANGULAR DIM. \pm

SCALE: $\frac{1}{16}$

MAXIMUM ALLOWABLE TOLERANCES HAVE BEEN DETERMINED AND ANY DEVIATIONS WILL BE CAUSE FOR REJECTION. REMOVE ALL BURRS AND SHARP EDGES

2	CFA					7-1-58
REQ. PER UNIT	MODEL	PR JECT NO.	ASS'Y. NO.	DATE	USED ON	

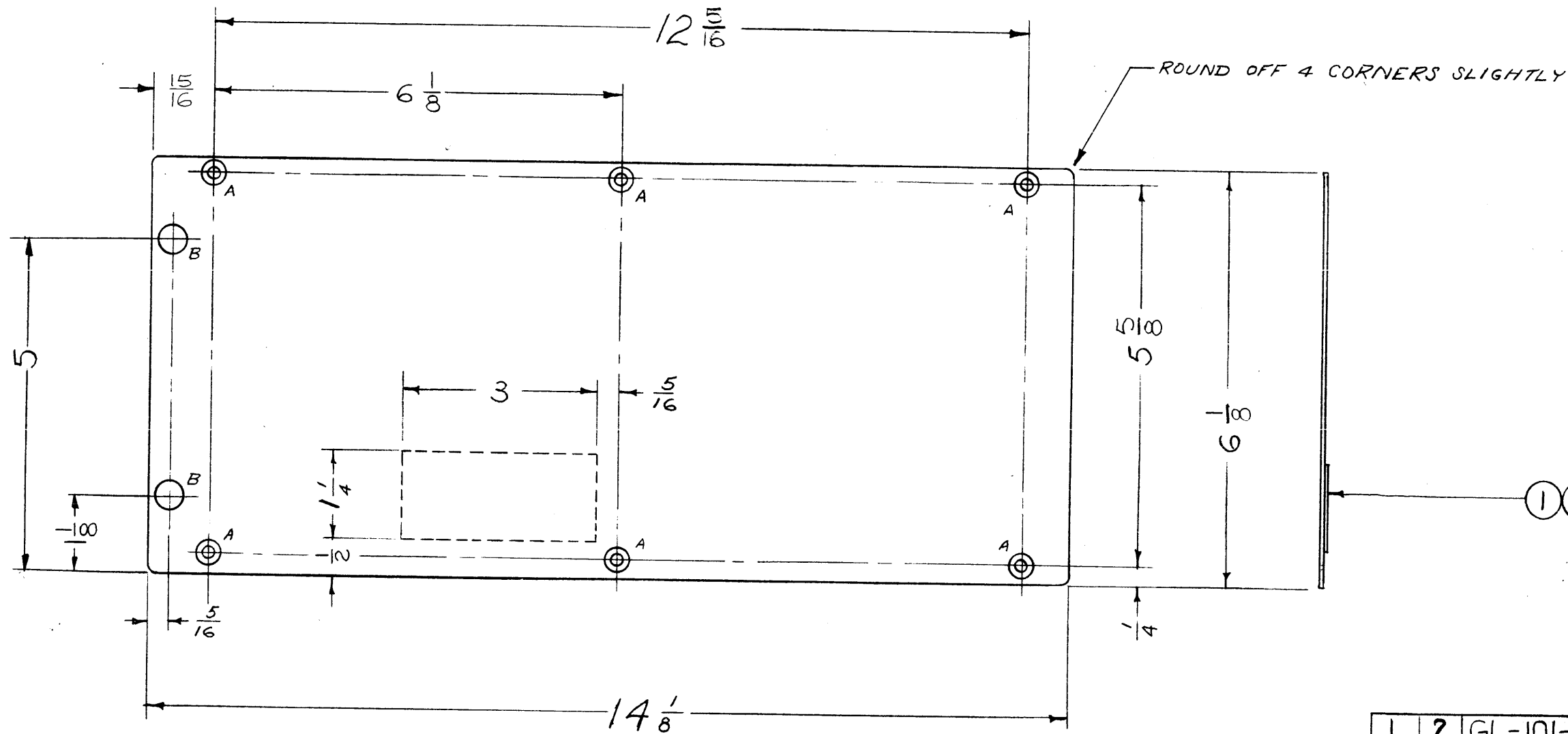
REQ. ITEM	PART NO.	DESCRIPTION	SYMBOL
	.052 THICK STOCK SIZE	THE TECHNICAL MATERIEL CORP. MAMARONECK, NEW YORK	
	5052-H32	SIDE COVER	
	MATERIAL	MODEL CFA	
	IRIDITE S404		
	FINISH & SPEC. NO.	ELEC. DES. APP.	MECH. DES. APP.

IF IT IS FOUND DESIRABLE TO CHANGE ANY TOLERANCE OR OTHER DETAIL SPECIFIED ON THIS DRAWING NOTIFY THE PURCHASER PROMPTLY.

MAXIMUM ALLOWABLE TOLERANCES HAVE BEEN DETERMINED AND DEVIATIONS WILL BE CAUSE FOR REJECTION. REMOVE ALL BURRS AND SHARP EDGES

MS-288 E

A = CTSK FOR .0632 FLAT HD. SC. 6 REQ.
B = 7/16 (.4375) D. 2 HOLES "



NOTICE TO PERSONS RECEIVING THIS DRAWING

THE TECHNICAL MATERIEL CORPORATION claims proprietary right in the material disclosed hereon. This drawing is issued in confidence for engineering information only and may not be reproduced or used to manufacture anything shown hereon without permission from THE TECHNICAL MATERIEL CORPORATION to the user. This drawing is loaned for mutual assistance and is subject to recall at any time.

Property of:
THE TECHNICAL MATERIEL CORPORATION
MAMARONECK, NEW YORK

E	1	12-5/16 DIM. WAS 12-1/4	3-8-62	6503	EE	<i>[Signature]</i>	<i>[Signature]</i>
D	4	6-1/8 DIM. WAS 6-1/4 (Rt. Side)	2-9-	6328	EE	<i>[Signature]</i>	<i>[Signature]</i>
	3	12-1/4 DIM. WAS 12-3/8; 5-5/8 DIM. WAS 5-3/4	62	6328	EE	<i>[Signature]</i>	<i>[Signature]</i>
	2	15/16 DIM. WAS 7/8; 6-1/8 DIM. WAS 6-3/16					
	1	1-1/8 DIM. WAS 1-3/16; 1/2 DIM. WAS 9/16					
C	1	REDRAWN FROM A-917	4-28-61	4743	RU	<i>[Signature]</i>	<i>[Signature]</i>

ISSUE	ITEM	CHANGED FROM	DATE	CN. NO.	DRAFTS	CHECKER	ENG. APP.

TOLERANCES		SCALE:
ALL OTHERS	DEC. DIM. ± FRAC. DIM. ± ANGULAR DIM. ±	DRILL, PUNCH, COMMERCIAL STOCK SIZES AND MANUFACTURERS TOLERANCES ARE NOT INCLUDED.

1	VOX-2	291			1-18-55
1	VOX-1	291			1-18-55
1	VOX	101			1-18-55
REQ. PER UNIT	MODEL	PROJECT NO.	ASS'Y. NO.	DATE	

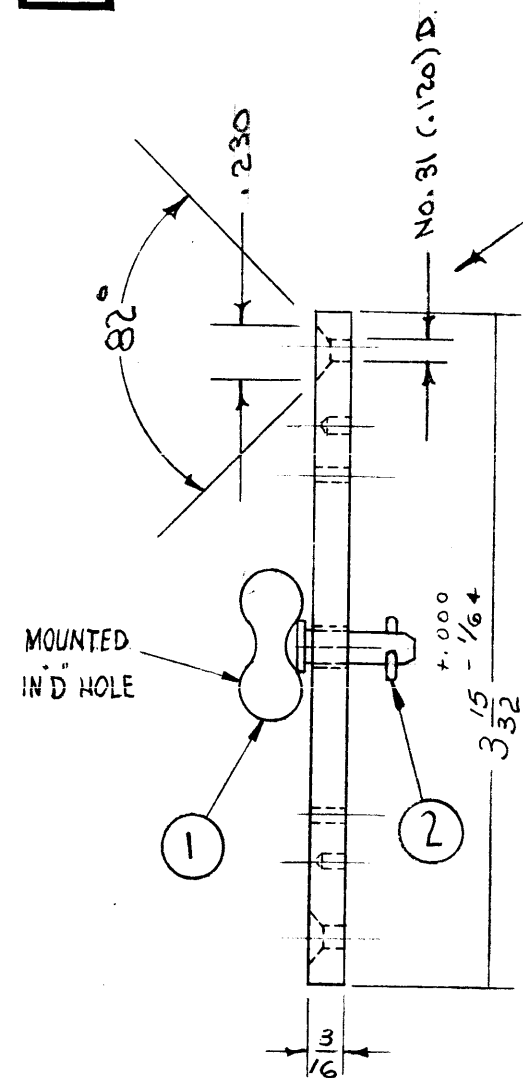
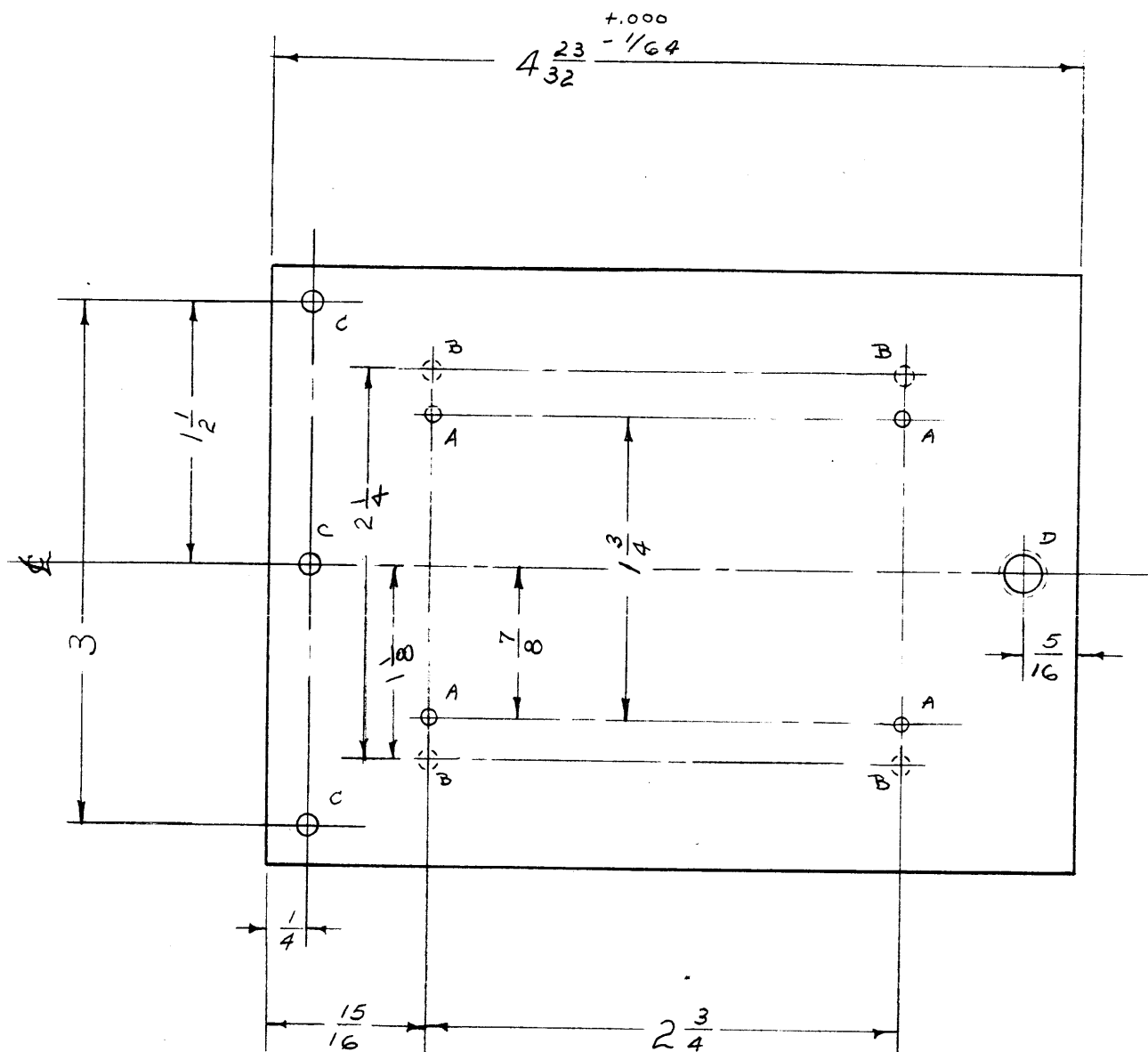
1	2	GL-101-2	CEMENT - PLIOBOND #30
1	1	IM-148	INSULATION, P.S. BOT. COVER
REQ. ITEM	PART NO.		DESCRIPTION
	.040		THE TECHNICAL MATERIEL CORP.
STOCK SIZE			MAMARONECK, NEW YORK
ALUMINUM	#		POWER SUPPLY BOTTOM COVER
MATERIAL	WEIGHT PER PC.		MODEL VOX
525 - H32			P.B. 1-18-55
TYPE & TEMPER			
HEAT TREAT. SPEC.			
S-404 YELLOW IRIDITE		FINISH & SPEC. NO.	

DRAWN	ELEC. DES. APP.	MECH. DES. APP.
CHECKED	FINAL APPROVAL	
	MS-288	E

IF IT IS FOUND DESIRABLE TO CHANGE ANY TOLERANCE OR OTHER DETAIL SPECIFIED ON THIS DRAWING NOTIFY THE PURCHASER PROMPTLY.

MAXIMUM ALLOWABLE TOLERANCES HAVE BEEN DETERMINED AND DEVIATIONS WILL BE CAUSE FOR REJECTION. REMOVE ALL BURRS AND SHARP EDGES

MS-291 F



A = #47 (.078) DRILL 4 HOLES REQ.
 B = DRILL FROM REAR #47 (.078) 1/8 DEEP 4 HOLES REQ.
 C = 1/8 (.125) DIA 3 HOLES REQ.
 D = 7/32 (.21875) DIA. 1 HOLE REQ.

NOTE:
 NO SHARP EDGES
 SMOOTH FINISH

NOTE: FINISH - BOTH SIDES & ALL EDGES

S-404 YELLOW IRIDITE
 S-114 - ZINC CHROMATE PRIMER
 S-115 - SMOOTH GRAY ENAMEL
 OR PRIME & PAINT TO CUSTOMERS SPECIFICATION

F	1	1/8 D. "C" HOLES WERE C SINKS FOR 4-40	7/16/53	10685	SRG	File	EMN
E	2	ADD VOX 3,4,5,6 & ITEMS 1 & 2	6/21/52	6470	SRG	File	EMN
D	1	S-404 WAS S-101	12/11/59	1001	AB	File	EMN
C	2	A HOLES ADDED					
C	1	REDRAWN, NO CHANGE	1-19-55	3	P.B.	File	EMN

ISSUE	ITEM	CHANGED FROM	DATE	CN. NO.	DRAFTS	CHECKER	ENG. APP.
		TOLERANCES	SCALE:				
		DEC. DIM. ±	DRILL, PUNCH, COMMERCIAL STOCK				
		FRAC. DIM. ±	SIZES AND MANUFACTURERS				
		AN ULAR DIM. ±	TOLERANCES ARE NOT INCLUDED.				

1	VOX-3,4,5,6			
1	VOX-1,2	291		1-19-55
1	VOX	101		1-19-55
REQ. PER UNIT	MODEL	PROJECT NO.	ASS'Y. NO.	DATE

1	2	PN-106	PIN, GROSS	
1	1	FS-106-7	STUD, WING HERD	
REQ. ITEM	PART NO.		DESCRIPTION	SYMBOL
3/16 THK.			THE TECHNICAL MATERIEL CORP.	
STOCK SIZE			MAMARONECK, NEW YORK	
ALUMINUM		—#—	FRONT DOOR	
MATERIAL		WEIGHT PER PC.	MODEL VOX-1,2	
24 S - 73			P.B. 1-19-55	
TYPE & TEMPER			DRAWN	MECH. DES. APP.
—#—			FILE	EMN
HEAT TREAT. SPEC.			CHECKED	FINAL APPROVAL
SEE NOTE				
FINISH & SPEC. NO.			MS-291	F

IF IT IS FOUND DESIRABLE TO CHANGE ANY TOLERANCE OR OTHER DETAIL SPECIFIED ON THIS DRAWING NOTIFY THE PURCHASER PROMPTLY.

MAXIMUM ALLOWABLE TOLERANCES HAVE BEEN DETERMINED AND DEVIATIONS WILL BE CAUSE FOR REJECTION. REMOVE ALL BURRS AND SHARP EDGES

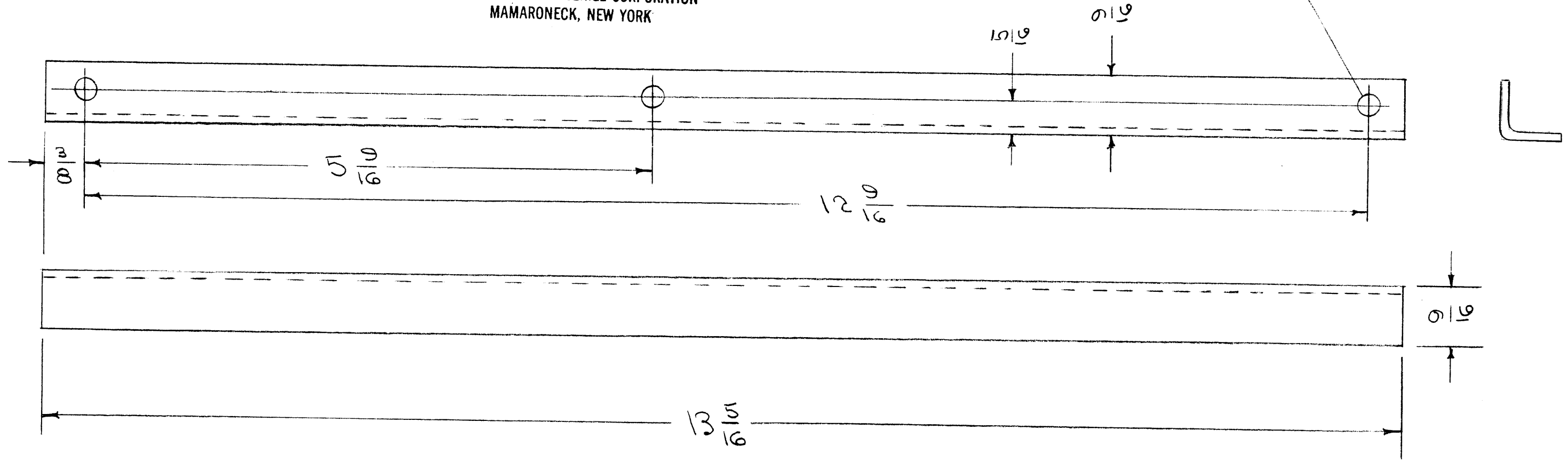
MS-292 B

NOTICE TO PERSONS RECEIVING THIS DRAWING

THE TECHNICAL MATERIEL CORPORATION claims proprietary right in the material disclosed hereon. This drawing is issued in confidence for engineering information only and may not be reproduced or used to manufacture anything shown hereon without permission from THE TECHNICAL MATERIEL CORPORATION to the user. This drawing is loaned for mutual assistance and is subject to recall at any time.

Property of:
THE TECHNICAL MATERIEL CORPORATION
MAMARONECK, NEW YORK

$\frac{13}{64}$ (.203) D. 3 HOLES REQ.



ISSUE	ITEM	CHANGED FROM	DATE	CN. NO.	DRAFTS	CHECKER	ENG. APP.
B	1	S-404 WAS S-101	4-1-55	1001	AR		EMN
A	1	COMPLETE REVISION	7-20-55	1	COB	JAW	W

TOLERANCES		SCALE:
ALL OTHERS	DEC. DIM. ± FRAC. DIM. ± ANGULAR DIM. ±	1/16
	DRILL, PUNCH, COMMERCIAL STOCK SIZES AND MANUFACTURERS TOLERANCES ARE NOT INCLUDED.	

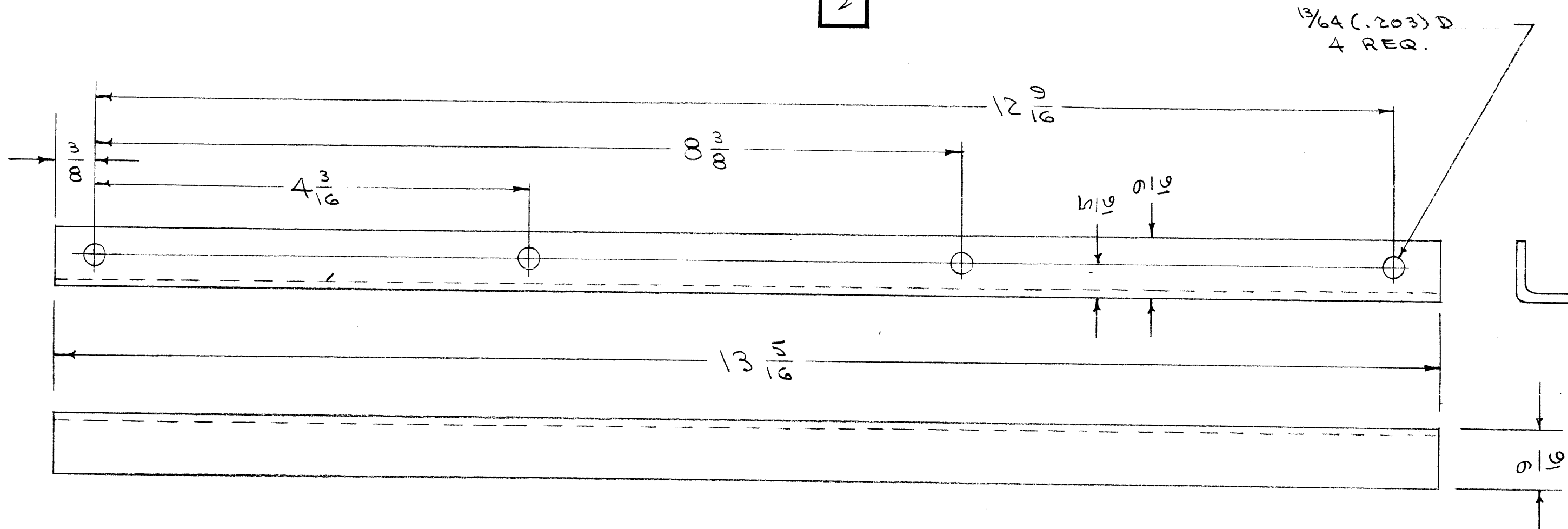
REQ. PER UNIT	MODEL	PROJECT NO.	ASS'Y. NO.	DATE
1	VOX 22			1-20-55
1	VOX			1-20-55

REQ. ITEM	PART NO.	DESCRIPTION	SYMBOL
	.064	THE TECHNICAL MATERIEL CORP. MAMARONECK, NEW YORK	
	ALUMINUM #	TRACK, RIGHT	
	52S H32		
	TYPE & TEMPER	CDD-1-20-55	
	HEAT TREAT. SPEC.	DRAWN	ELEC. DES. APP. MECH. DES. APP.
	FINISH & SPEC. NO.	CHECKED	FINAL APPROVAL
			MS-292 B

IF IT IS FOUND DESIRABLE TO CHANGE ANY TOLERANCE OR OTHER DETAIL SPECIFIED ON THIS DRAWING NOTIFY THE PURCHASER PROMPTLY.

MAXIMUM ALLOWABLE TOLERANCES HAVE BEEN DETERMINED AND DEVIATIONS WILL BE CAUSE FOR REJECTION. REMOVE ALL BURRS AND SHARP EDGES

MS-293 B



NOTICE TO PERSONS RECEIVING THIS DRAWING

THE TECHNICAL MATERIEL CORPORATION claims proprietary right in the material disclosed hereon. This drawing is issued in confidence for engineering information only and may not be reproduced or used to manufacture anything shown hereon without permission from THE TECHNICAL MATERIEL CORPORATION to the user. This drawing is loaned for mutual assistance and is subject to recall at any time.

Property of:

THE TECHNICAL MATERIEL CORPORATION
MAMARONECK, NEW YORK

REQ. ITEM	PART NO.	DESCRIPTION	SYMBOL
.064		THE TECHNICAL MATERIEL CORP. MAMARONECK, NEW YORK	
ALUMINUM	#	TRACK, LEFT	
52S-H32			
TYPE & TEMPER		CDD 1-20-55	
HEAT TREAT. SPEC.			
S-404 YELLOW IRIDITE			
FINISH & SPEC. NO.			

ISSUE	ITEM	CHANGED FROM	DATE	CN. NO.	DRAFTS	CHECKER	ENG. APP.
B	1	S-404 WAS S-101	12/11/59	1001	AB		EMN
A	1	COMPLETE REVISION	1/20/55	1	ESD	J. De...	

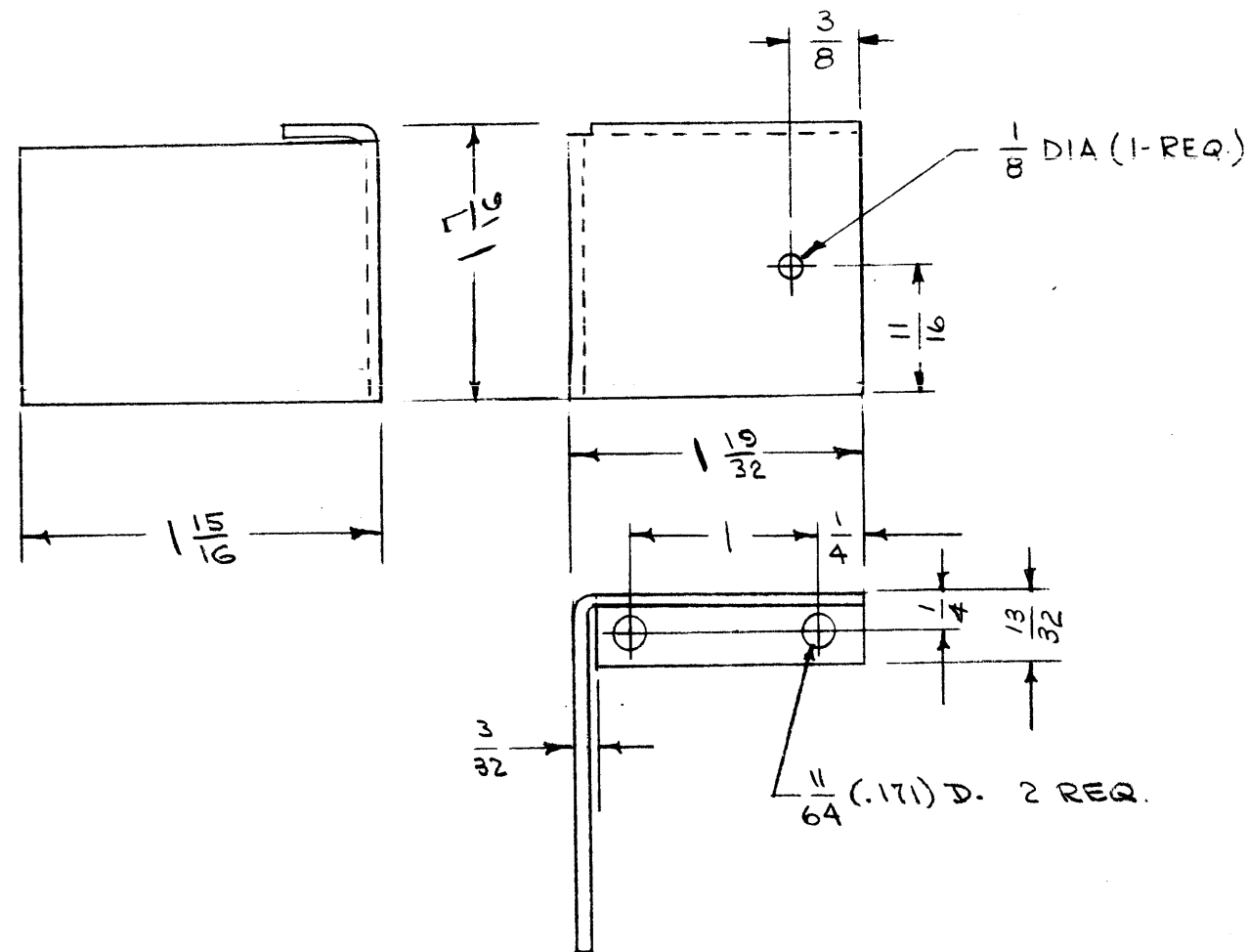
TOLERANCES		SCALE:
ALL OTHERS	DEC. DIM. ± FRAC. DIM. ± ANGULAR DIM. ±	DRILL, PUNCH, COMMERCIAL STOCK SIZES AND MANUFACTURERS TOLERANCES ARE NOT INCLUDED.

REQ. PER UNIT	MODEL	PROJECT NO.	ASS'Y. NO.	DATE
1	VOX			1-20-55
1	VOX 1/2			1-20-55

IF IT IS FOUND DESIRABLE TO CHANGE ANY TOLERANCE OR OTHER DETAIL SPECIFIED ON THIS DRAWING NOTIFY THE PURCHASER PROMPTLY.

MAXIMUM ALLOWABLE TOLERANCES HAVE BEEN DETERMINED AND DEVIATIONS WILL BE CAUSE FOR REJECTION. REMOVE ALL BURRS AND SHARP EDGES

MS-294 E



NOTICE TO PERSONS RECEIVING THIS DRAWING

THE TECHNICAL MATERIEL CORPORATION claims proprietary right in the material disclosed hereon. This drawing is issued in confidence for engineering information only and may not be reproduced or used to manufacture anything shown hereon without permission from THE TECHNICAL MATERIEL CORPORATION to the user. This drawing is loaned for mutual assistance and is subject to recall at any time.

Property of:
THE TECHNICAL MATERIEL CORPORATION
MAMARONECK, NEW YORK

ISSUE	ITEM	CHANGED FROM	DATE	CN. NO.	DRAFTS	CHECKER	ENG. APP.
E	1	1/8 DIA HOLE ADDED, 1-REQ	8-14-62	7058	45	YD	LS
D	1	S-404 WAS - S-101	7/11/54	1001	AC	JAD	EMN
C	2	13/32 WAS 3/8	3-28-55	3	RB	JAD	WSE
C	1	1/4 WAS 5/16					
B	2	BRACKET REVERSED	3/1/55	2	edd	JAD	WSE
A	1	REBORN COMPLETE REVISION	1/17/55	1	edd	JAD	WSE

ISSUE	ITEM	CHANGED FROM	DATE	CN. NO.	DRAFTS	CHECKER	ENG. APP.
TOLERANCES							
ALL OTHERS		DEC. DIM. ±	SCALE:				
		FRAC. DIM. ± 1/64	DRILL, PUNCH, COMMERCIAL STOCK				
		ANGULAR DIM. ±	SIZES AND MANUFACTURERS				
			TOLERANCES ARE NOT INCLUDED.				

1	VOX-1	291			
1	VOX-2				
1	VOX				1-17-55
REQ PER UNIT	MODEL	PROJECT NO.	ASS'Y. NO.	DATE	
USED ON					

REQ.	ITEM	PART NO.	DESCRIPTION	SYMBOL
		.064	THE TECHNICAL MATERIEL CORP.	
		STOCK SIZE	MAMARONECK, NEW YORK	
	ALUMINUM	#	COIL SHIELD, R.F. CHASSIS	
	MATERIAL	WEIGHT PER PC.		
	52S H32			
	TYPE & TEMPER		CDD. 1-17-55	
			DRAWN	ELEC. DES. APP.
			JAD 1-19-55	WSE
	HEAT TREAT. SPEC.		CHECKED	FINAL APPROVAL
	S-404 YELLOW IRIDITE			
	FINISH & SPEC. NO.			

MS-294 E

IF IT IS FOUND DESIRABLE TO CHANGE ANY TOLERANCE OR OTHER DETAIL SPECIFIED ON THIS DRAWING NOTIFY THE PURCHASER PROMPTLY.

MAXIMUM ALLOWABLE TOLERANCES HAVE BEEN DETERMINED AND DEVIATIONS WILL BE CAUSE FOR REJECTION. REMOVE ALL BURRS AND SHARP EDGES

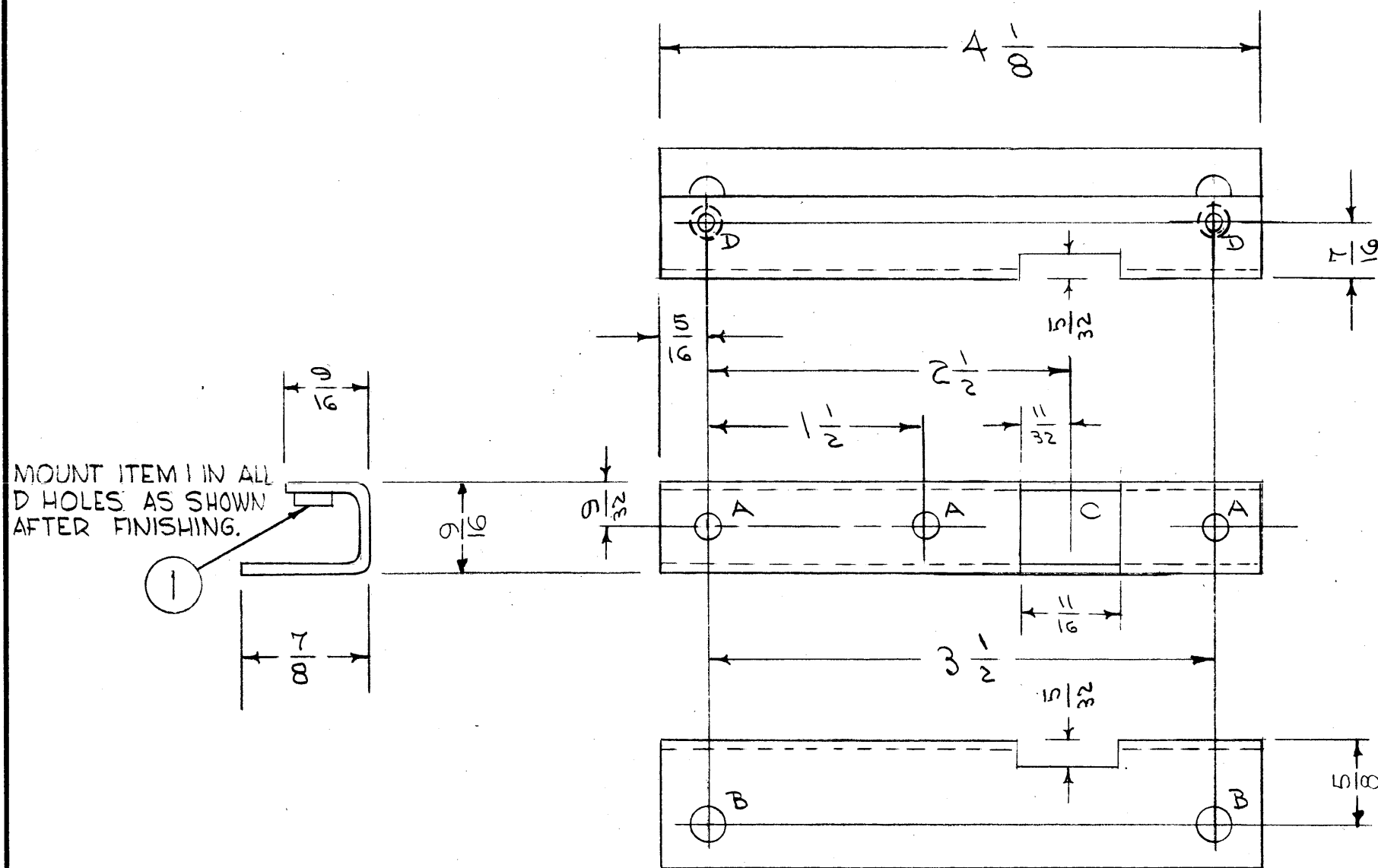
MS-297

A - 3/16 (.187) D. 3 HOLES REQ.
 B - 1/4 (.250) D. 2 " " "
 C - 1/16 x 3/4 PUNCH 1 " " "
 D - .191-.194 DIA. 2 REQ.

NOTICE TO PERSONS RECEIVING THIS DRAWING

THE TECHNICAL MATERIEL CORPORATION claims proprietary right in the material disclosed hereon. This drawing is issued in confidence for engineering information only and may not be reproduced or used to manufacture anything shown hereon without permission from THE TECHNICAL MATERIEL CORPORATION to the user. This drawing is loaned for mutual assistance and is subject to recall at any time.

Property of:
THE TECHNICAL MATERIEL CORPORATION
 MAMARONECK, NEW YORK



C	2	5/8 DIM. WAS 9/16; 9/16 DIM. WAS 5/8	12/9	6328	1/5	RTT	EMN
	1	ITEM (1) ADDED; D WAS .106 DIA	12/9	62	1/5	RTT	EMN
B	1	S-404 WAS S-101	12/11/59	1001	HB	EMN	EMN
A	1	COMPLETE REVISION	1/2/55	1	EMN	JAE	EMN

ISSUE	ITEM	CHANGED FROM	DATE	CN. NO.	DRAFTS	CHECKER	ENG. APP.
TOLERANCES		SCALE:					
ALL OTHERS	DEC. DIM. ±	DRILL, PUNCH, COMMERCIAL STOCK					
	FRAC. DIM. ±	SIZES AND MANUFACTURERS					
	ANGULAR DIM. ±	TOLERANCES ARE NOT INCLUDED.					

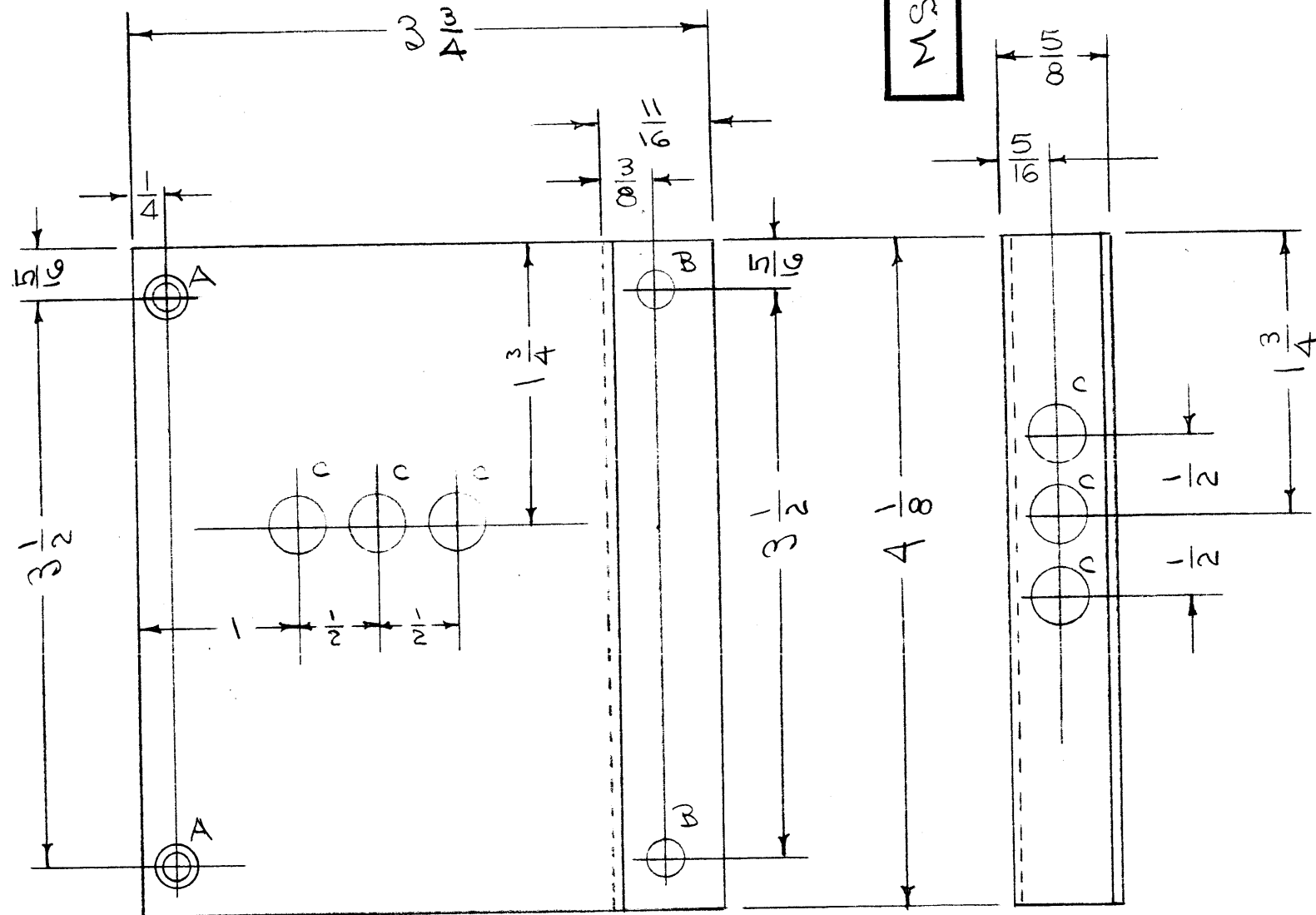
1	VOX			1-20-55
1	VOX = 1/2			1-20-55
REQ. PER UNIT	MODEL	PROJECT NO.	ASSY. NO.	DATE
USED ON				

2	1	NT-129-632-4	NUT, ROUND, SWAGE TYPE	D
REQ.	ITEM	PART NO.	DESCRIPTION	SYMBOL
		.064	THE TECHNICAL MATERIEL CORP.	
		ALUMINUM	MAMARONECK, NEW YORK	
		528 H 32	BRACKET, TRANSFORMER	
		TYPE & TEMPER	CDD. 1-20-55	
		HEAT TREAT. SPEC.	DRAWN	ELEC. DES. APP.
		S-404 YELLOW IRIDITE	CHECKED	FINAL APPROVAL
		FINISH & SPEC. NO.		MS-297

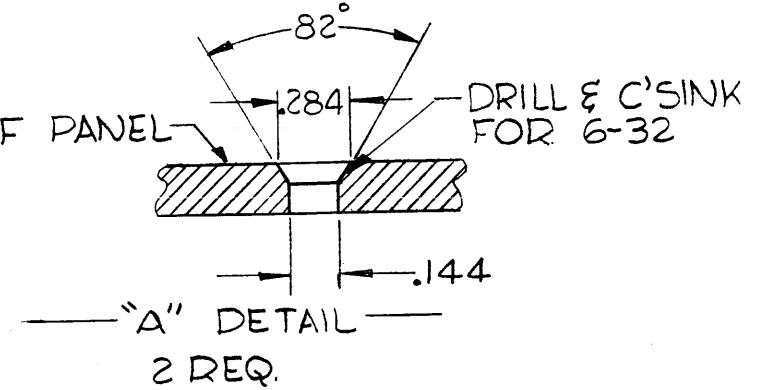
IF IT IS FOUND DESIRABLE TO CHANGE ANY TOLERANCE OR OTHER DETAIL SPECIFIED ON THIS DRAWING NOTIFY THE PURCHASER PROMPTLY.

MAXIMUM ALLOWABLE TOLERANCES HAVE BEEN DETERMINED AND DEVIATIONS WILL BE CAUSE FOR REJECTION. REMOVE ALL BURRS AND SHARP EDGES

MS-298



- A- SEE DETAIL 2 HOLES REQ.
- B- 1/4 (.250) D. 2 " "
- C- 3/8 (.375) D. 6 " "



NOTICE TO PERSONS RECEIVING THIS DRAWING

THE TECHNICAL MATERIEL CORPORATION claims proprietary right in the material disclosed hereon. This drawing is issued in confidence for engineering information only and may not be reproduced or used to manufacture anything shown hereon without permission from THE TECHNICAL MATERIEL CORPORATION to the user. This drawing is loaned for mutual assistance and is subject to recall at any time.

Property of:

THE TECHNICAL MATERIEL CORPORATION
MAMARONECK, NEW YORK

ISSUE	ITEM	CHANGED FROM	DATE	CN. NO.	DRAFTS	CHECKER	ENG. APP.
D	2	1/4 DIM WAS 5/16; 5/8 DIM WAS 11/16	2-9-62	6328	LE	[Signature]	[Signature]
C	1	AS WAS 3/16 DIA; 5/16 DIM WAS 11/32	12/11/62	1001	HC	[Signature]	EMN
B	1	S-404 WAS S-101	1/18/55	2	ESD	[Signature]	[Signature]
		COMPLETE REVISION					

TOLERANCES	SCALE:	REQ. PER UNIT	MODEL	PROJECT NO.	ASS'Y. NO.	DATE	HEAT TREAT. SPEC.	FINISH & SPEC. NO.
ALL OTHERS	DEC. DIM. ± FRAC. DIM. ± ANGULAR DIM. ±	1	VOX 1/2	291		1-18-55		S-404 YELLOW IRIDITE
	DRILL, PUNCH, COMMERCIAL STOCK SIZES AND MANUFACTURERS TOLERANCES ARE NOT INCLUDED.	1	VOX			1-18-55		

REQ.	ITEM	PART NO.	DESCRIPTION	SYMBOL
		.064	THE TECHNICAL MATERIEL CORP. MAMARONECK, NEW YORK	
		ALUMINUM	GUARD, TRANSFORMER	
		52S H32		
			CON. 1-18-55	
			DRAWN	
			ELEC. DES. APP.	
			MECH. DES. APP.	
			CHECKED	
			FINAL APPROVAL	
				MS-298

