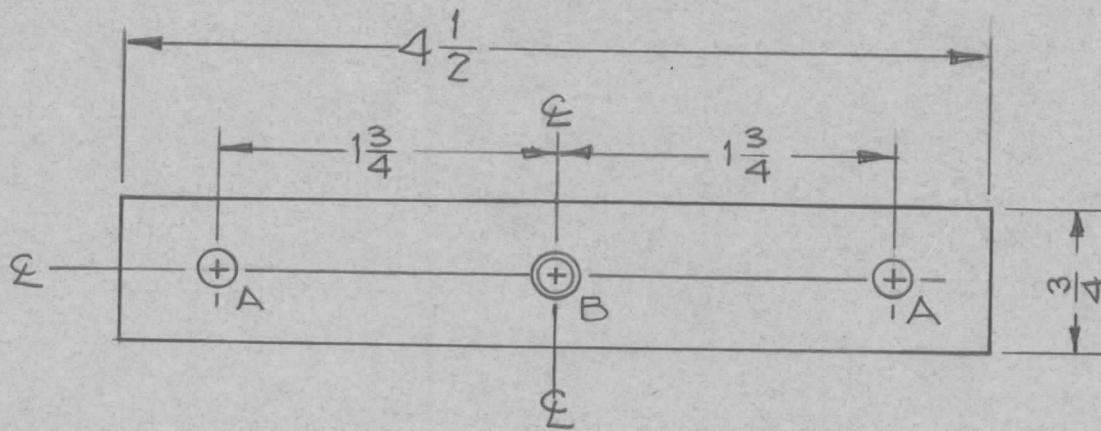


REQ. PER UNIT	USED ON			MS-1908	A
	MODEL	ASS'Y. NO.	DATE		
2	GPT-10K	AX-139	11-6-59		



HOLES Req'd.
 A ~ 13/64 (.203) Dia - - - 2
 B ~ COUNTER SINK - 10-32 FHS - 1

UNLESS OTHERWISE SPECIFIED
 DIMENSIONS ARE IN INCHES AND INCLUDE
 CHEMICALLY APPLIED OR PLATED FINISHES

DECIMALS	TOLERANCES	FRACTIONS
.X ± .05		± 1/64
.XX ± .01		ANGLES
.XXX ± .005		± 0° 30'

CUT HERE
 GUARANTEED
 2-66

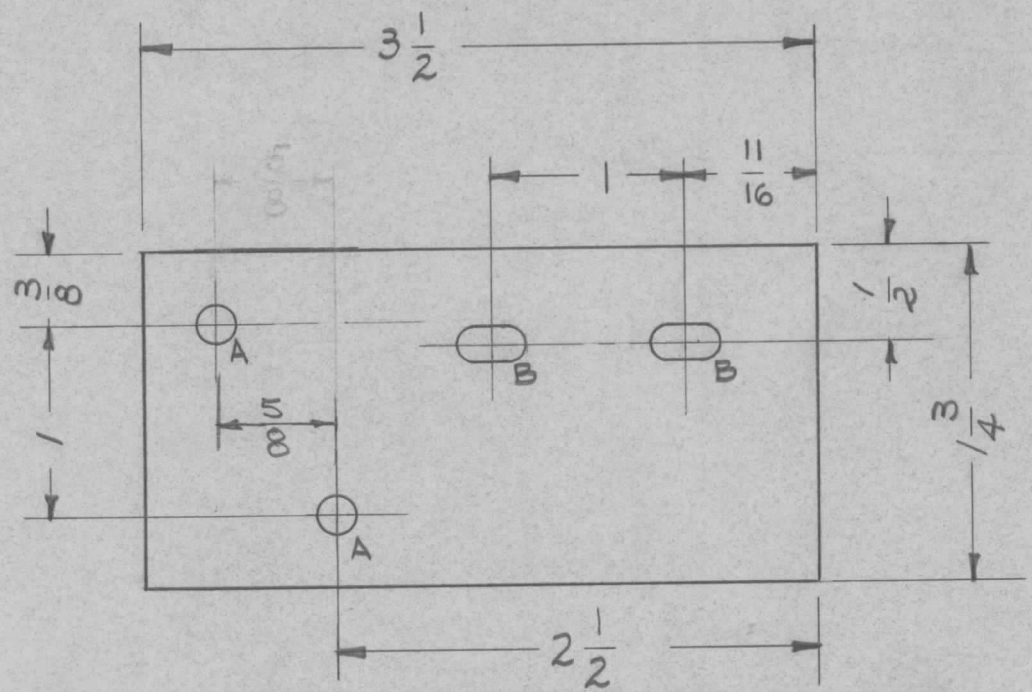
REQ.	ITEM	PART NO.	DESCRIPTION		SYMBOL
		1/8 THICK	THE TECHNICAL MATERIEL CORP.		
		STOCK SIZE	MAMARONECK, NEW YORK		
A	1	ALUMINUM	PLATE, RESISTOR MOUNT		
		MATERIAL			
		5052-H32	D. MANCUSO	Hole	chk
		TYPE & TEMPER	DRAWN	CHECKED	FINAL APPROVAL
		HEAT TREAT. SPEC.			
		S404 IRIDITE Yel.			MS-1908 A
		FINISH & SPEC. NO.	ELEC. DES. APP	MECH. DES. APP	

REQ PER UNIT WAS 4
 DATE 3-25-60
 CH. NO. ~
 DRAFTS MF
 CHECKER HDe
 ENG. APP. dnb

TOLERANCES
 DEC. DIM. ±
 FRAC. DIM. ±
 ANGULAR DIM. ±

SCALE:
 MAXIMUM ALLOWABLE TOLERANCES HAVE BEEN DETERMINED AND ANY DEVIATIONS WILL BE CAUSE FOR REJECTION. REMOVE ALL BURRS AND SHARP EDGES

REQ. PER. UNIT	USED ON			MS-1914
	MODEL	ASS'Y. NO.	DATE	
1	SBT-1K	AX-19B	11-23-59	



A - 3/16 (.187) DIA. 2 REQ'D.
 B - 11/64 X 11/32 SLOTS 2 REQ'D.

UNLESS OTHERWISE SPECIFIED
 DIMENSIONS ARE IN INCHES AND INCLUDE
 CHEMICALLY APPLIED OR PLATED FINISHES

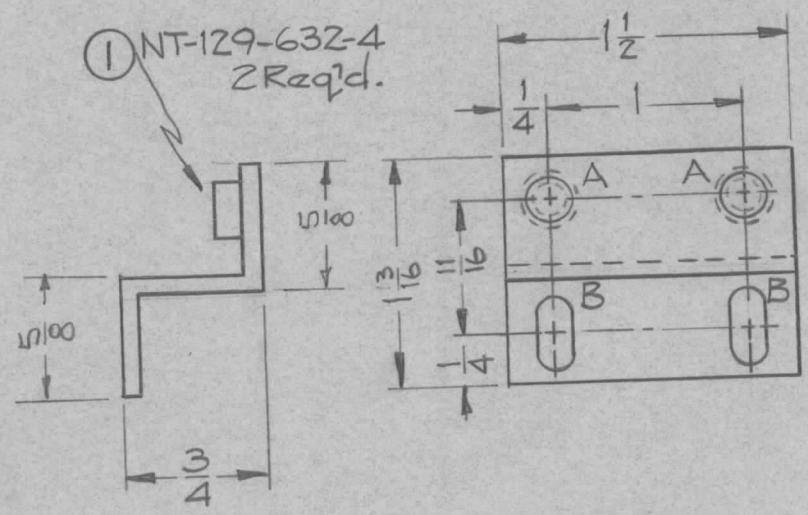
DECIMALS	TOLERANCES	FRACTIONS
.X ± .05		± 1/64
.XX ± .01		ANGLES
.XXX ± .005		± 0° 30'

CUT HERE
 GUARANTEED
 2-66

REQ.	ITEM	PART NO.	DESCRIPTION		SYMBOL				
		1/8	THE TECHNICAL MATERIEL CORP.						
		STOCK SIZE	MAMARONECK, NEW YORK						
		ALUMINUM	INTERLOCK SW. BRACKET						
		MATERIAL							
ISSUE	ITEM	CHANGED FROM	DATE	CH. NO.	DRAFTS	CHECKER	ENG. APP.		
TOLERANCES			SCALE:						
DEC. DIM. ±			MAXIMUM ALLOWABLE TOLERANCES HAVE BEEN DETERMINED AND ANY DEVIATIONS WILL BE CAUSE FOR REJECTION. REMOVE ALL BURRS AND SHARP EDGES						
FRAC. DIM. ±									
ANGULAR DIM. ±									
5052-H32			10RILLO		JEP		MS-1914		
TYPE & TEMPER		HEAT TREAT. SPEC.	DRAWN		CHECKED		FINAL APPROVAL		
5404 IRIDITE			ELEC. DES. APP		MECH. DES. APP				
FINISH & SPEC. NO.									

REQ. PER. UNIT	USED ON			MS-1916	B
	MODEL	ASS'Y. NO.	DATE		
1	AR-109		11-17-59		

HOLES — 221-334 DA
 A—.191-.194 Dia. to Mount NT-129-632-4 2
 B—3/16 X 3/8 Slots 2



UNLESS OTHERWISE SPECIFIED
 DIMENSIONS ARE IN INCHES AND INCLUDE
 CHEMICALLY APPLIED OR PLATED FINISHES

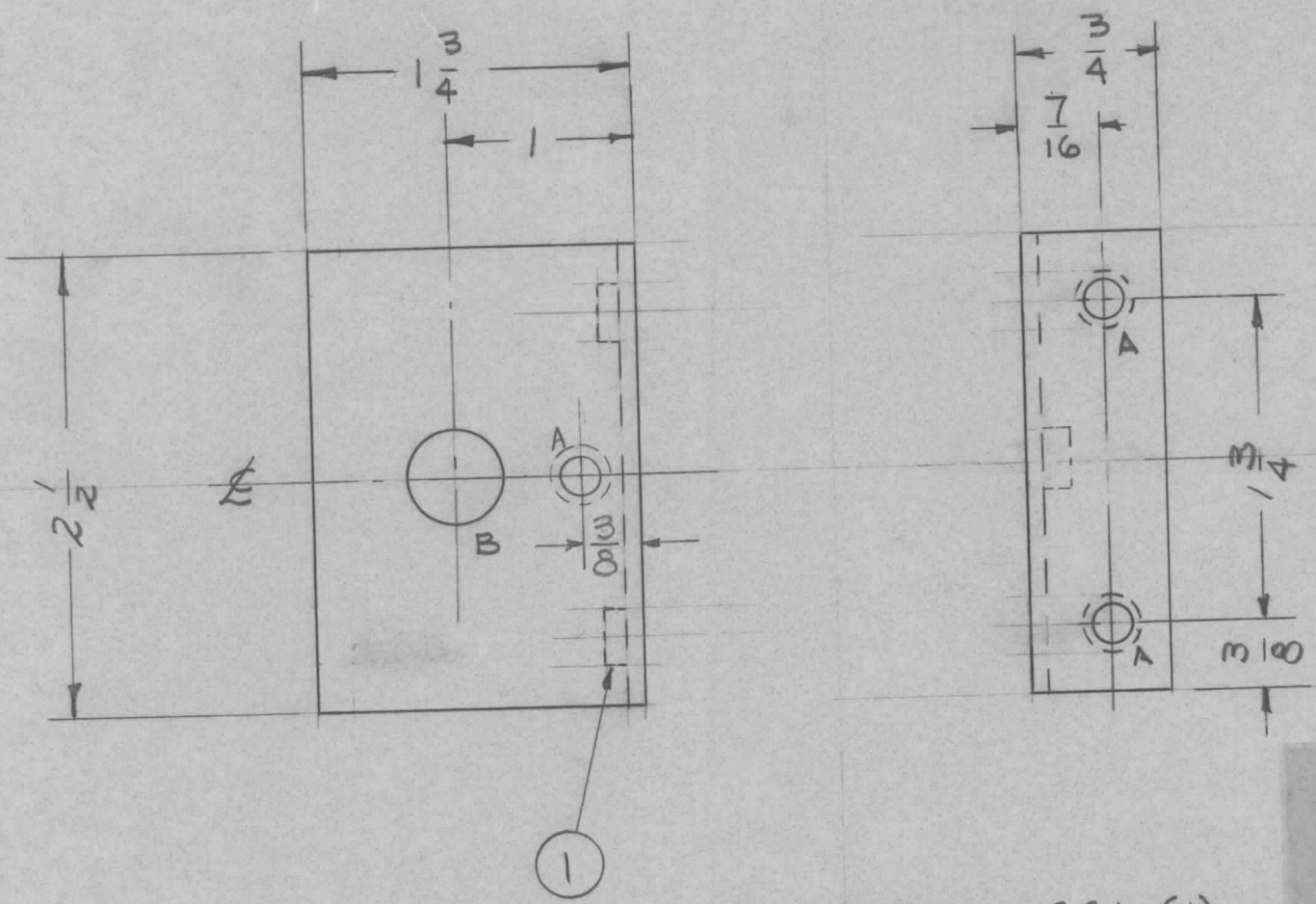
DECIMALS	TOLERANCES	FRACTIONS
.X ± .05		± 1/64
.XX ± .01		ANGLES
.XXX ± .005		± 0° 30'

CUT HERE
 GUARANTEED
 2-66

							2	1	NT-129-632-4	NUT ROUND, SWAGE TYPE	Δ			
							REQ.	ITEM	PART NO.	DESCRIPTION	SYMBOL			
										THE TECHNICAL MATERIEL CORP.				
										MAMARONECK, NEW YORK				
										BRACKET, SWITCH				
B	1	⊕ Hole was .221-224	1-7-61	3941	RU	JCB	200							
A	1	STOCK SIZE .061 TO .081	5-17-60	2291		JCB	ave							
ISSUE	ITEM	CHANGED FROM	DATE	CH. NO.	DRAFTS	CHECKER	ENG. APP.							
TOLERANCES			SCALE:											
DEC. DIM. ±			MAXIMUM ALLOWABLE TOLERANCES HAVE BEEN DETERMINED AND ANY DEVIATIONS WILL BE CAUSE FOR REJECTION. REMOVE ALL BURRS AND SHARP EDGES				TYPE & TEMPER		HEAT TREAT. SPEC.		FINAL APPROVAL			
FRAC. DIM. ±							5052-H32		S-404 Yellow Iridite		DRAWN		MECH. DES. APP	
ANGULAR DIM. ±											CHECKED		MS-1916 B	
							FINISH & SPEC. NO.		ELEC. DES. APP					

REQ. PER. UNIT	USED ON		
	MODEL	ASS'Y. NO.	DATE
1	RAK-9	SBT-1K	12-14-59

MS-1924 B



A - (.194 - .191) 3 REQ.
 B - 1/2 (.500) 1 REQ.

UNLESS OTHERWISE SPECIFIED
 DIMENSIONS ARE IN INCHES AND INCLUDE
 CHEMICALLY APPLIED OR PLATED FINISHES

DECIMALS	TOLERANCES	FRACTIONS
.X ± .05		± 1/64
.XX ± .01		ANGLES
.XXX ± .005		± 0° 30'

CUT HERE
 GUARANTEED
 2-66

REF: LD-661 (1)

3		1		NT-129-632-4		NUT, SWAGE	
REQ.	ITEM	PART NO.					
		081					
		STOCK SIZE					
		ALUMINUM					
		MATERIAL					
		5052-H32		DRAWN		CHECKED	
		TYPE & TEMPER		HEAT TREAT. SPEC.		FINAL APPROVAL	
		5404-IRIDITE Xel.		ELEC. DES. APP		MECH. DES. APP	
		FINISH & SPEC. NO.		MS-1924		B	

B	1	3/8 was 5/16	8-15-60	#	JFM	Wde	Wde
A	2	ONE NT-129-632-4 ADDED	1-28-60	1807	W.F.	Wde	Wde
	1	ONE "A" HOLE ADDED					
ISSUE	ITEM	CHANGED FROM	DATE	CH. NO.	DRAFTS	CHECKER	ENG. APP.
TOLERANCES			SCALE:				
DEC. DIM. ±			MAXIMUM ALLOWABLE TOLERANCES HAVE BEEN DETERMINED AND ANY DEVIATIONS WILL BE CAUSE FOR REJECTION.				
FRAC. DIM. ±			REMOVE ALL BURRS AND SHARP EDGES				
ANGULAR DIM. ±							

A1

A2

UNLESS OTHERWISE SPECIFIED
DIMENSIONS ARE IN INCHES AND INCLUDE
CHEMICALLY APPLIED OR PLATED FINISHES

DECIMALS
.X ± .05
.XX ± .01
.XXX ± .005

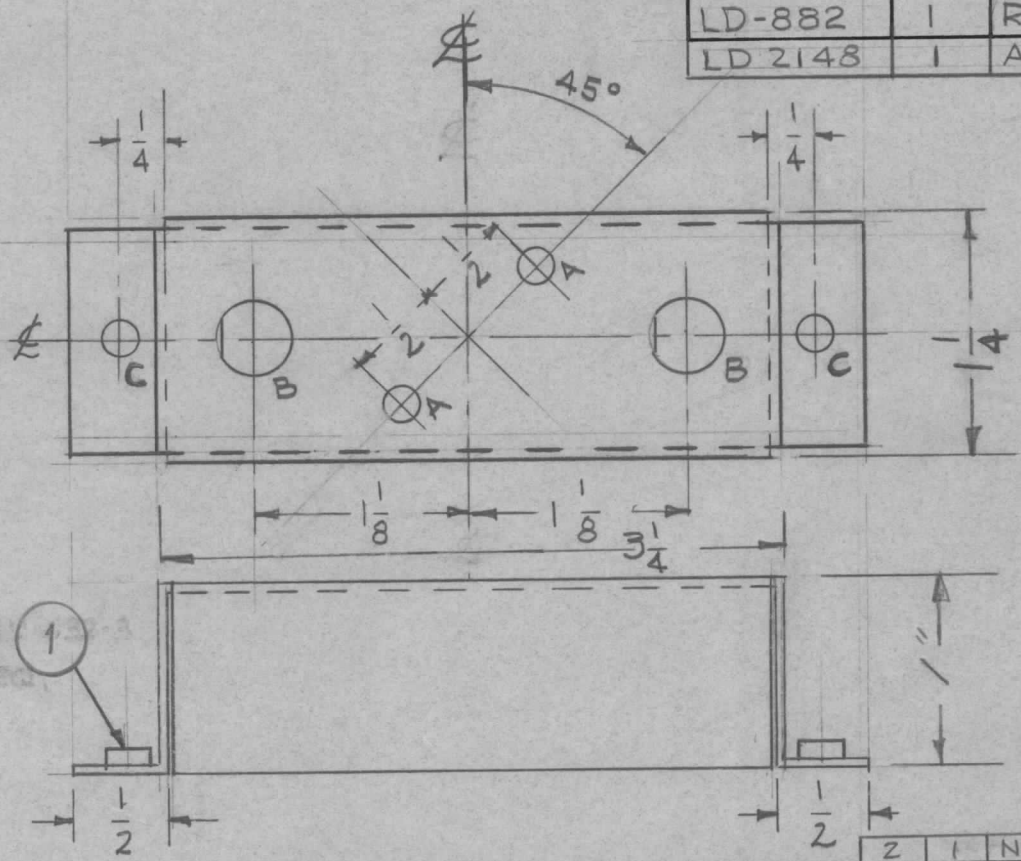
FRACTIONS
± 1/64
ANGLES
± 0° 30'

TOLERANCES

CUT HERE
GUARANTEED
2-66

LD-REF.	REQ. PER. UNIT	USED ON		
		MODEL	ASS'Y. NO.	DATE
LD-890	1	RAK-9 C	A-2049	12-14-59
LD-890	1	RAK-9 D	A-2049	
LD-882	1	RAK-11 A	A-2048	
LD-882	1	RAK-11 B	A-2048	
LD-887	1	AX-239	A-2048	
LD-882	1	RAK-20	A-2048	12-19-61
LD 2148	1	API25	A5461	

MS-1927 B



A ~ 1/8 (.125) D. 2 REQ.

B ~ 4.02 ±.005 / -.000 4 REQ.

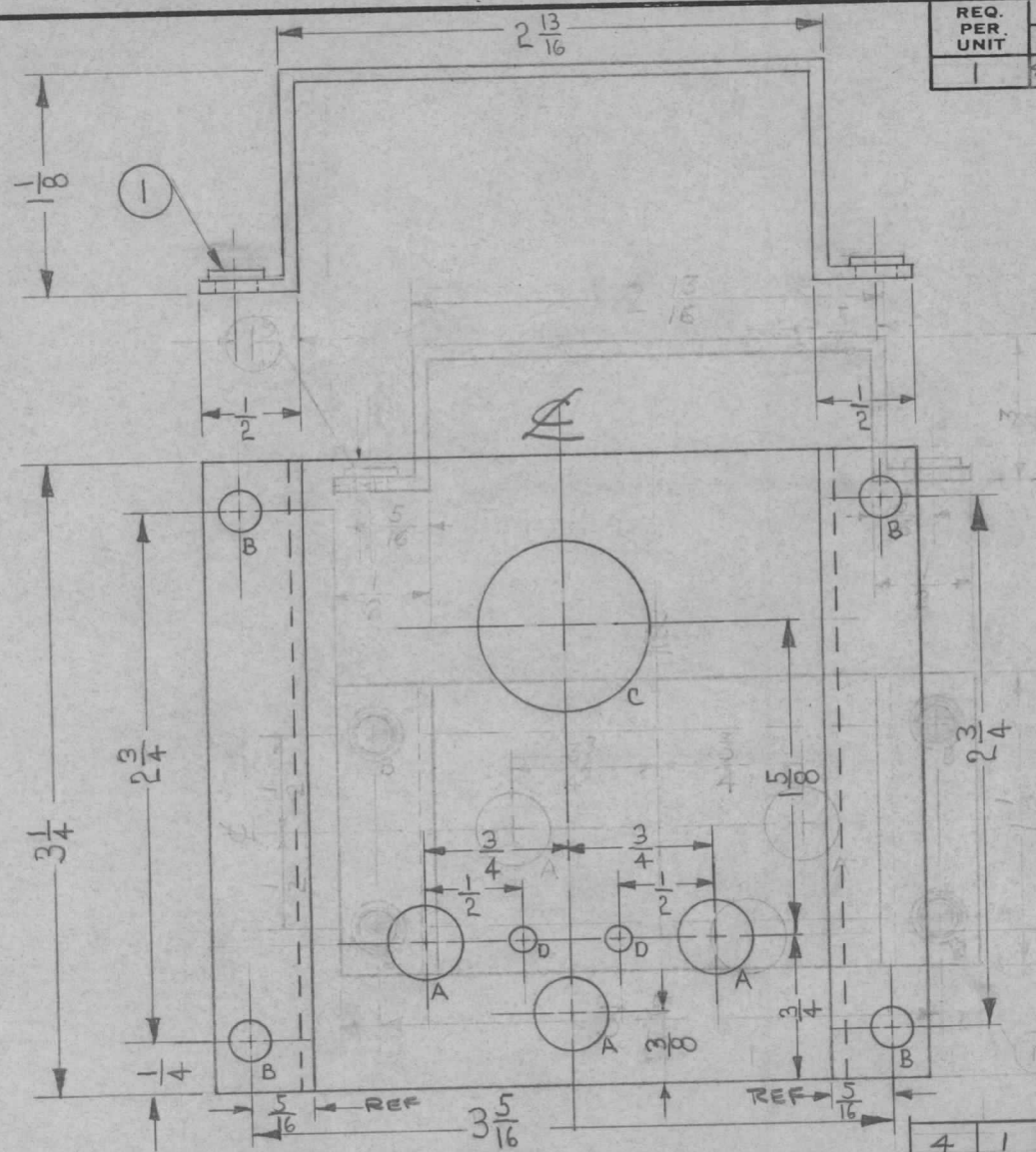
C ~ .191 / .194 D. 2 REQ.

NT-129-632-3
2 REQ.

REQ.	ITEM	PART NO.	DESCRIPTION	SYMBOL								
2	1	NT129-632-3	NUT, ROUND, SWAGE TYPE									
			THE TECHNICAL MATERIEL CORP. MAMARONECK, NEW YORK									
			CHASSIS, ATTENUATOR									
ISSUE		CHANGED FROM	DATE	CH. NO.	DRAFTS	CHECKER	ENG. APP.	DRAWN		CHECKED	FINAL APPROVAL	
B		ADDED LD2148 TO CHART	9/29/66	16940	JL	gcb	gcb	file		gcb	MS-1927 B	
A		② "A" Holes changed to "C" Holes.	1-24-61	3973	DM	gcb	gcb	DRILLO 12-14-59		gcb		
TOLERANCES			SCALE:									
DEC. DIM. ±			MAXIMUM ALLOWABLE TOLERANCES HAVE BEEN DETERMINED AND ANY DEVIATIONS WILL BE CAUSE FOR REJECTION. REMOVE ALL BURRS AND SHARP EDGES									
FRAC. DIM. ±												
ANGULAR DIM. ±												
5052-H32			TYPE & TEMPER		HEAT TREAT. SPEC.		FINISH & SPEC. NO.		ELEC. DES. APP		MECH. DES. APP	
			S404 YEL. IRIDITE									

REQ. PER UNIT	USED ON		
	MODEL	ASS'Y. NO.	DATE
1	SWR-1000BM		12-17-59

MS-1928



- A- 3/8 (.375) DIA. ~ 3-REQ'D
- B- .191-.194 ~ 4-REQ'D
- C- 7/8 DIA. ~ 1 REQ'D
- D- 1/8 DIA. (.125) ~ 2 REQ'D

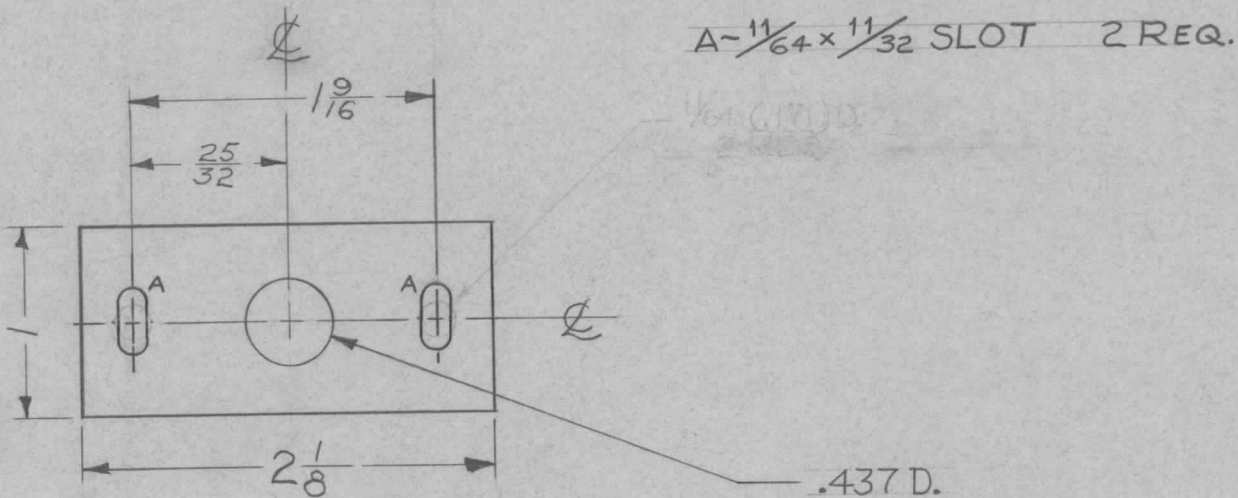
UNLESS OTHERWISE SPECIFIED
DIMENSIONS ARE IN INCHES AND INCLUDE
CHEMICALLY APPLIED OR PLATED FINISHES

DECIMALS	TOLERANCES	FRACTIONS
.X ± .05		± 1/64
.XX ± .01		ANGLES
.XXX ± .005		± 0° 30'

CUT HERE
GUARANTEED
2-56

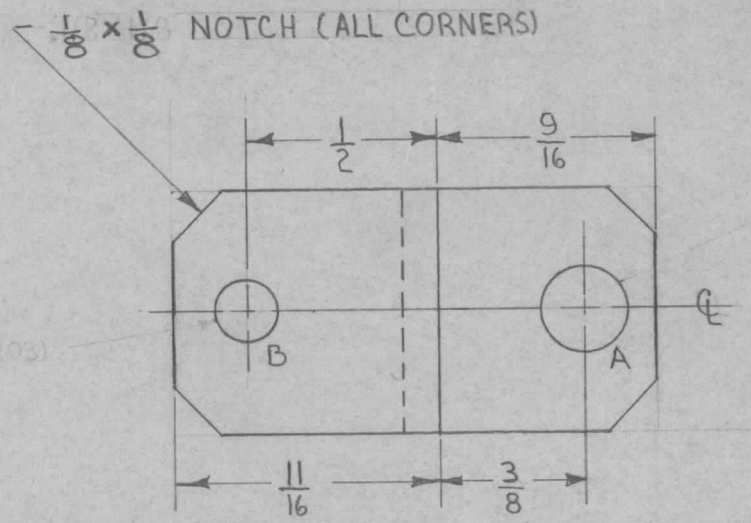
4	1	NT-129-632-4	NUT, ROUND, SWAGE TYPE		
REQ.	ITEM	PART NO.	DESCRIPTION		SYMBOL
		.064	THE TECHNICAL MATERIEL CORP.		
		STOCK SIZE	MAMARONECK, NEW YORK		
		ALUMINUM	BRACKET, VAR. RESISTORS		
		MATERIAL			
ISSUE	ITEM	CHANGED FROM	DATE	CH. NO.	DRAFTS
TOLERANCES			SCALE:		
DEC. DIM. ±			MAXIMUM ALLOWABLE TOLERANCES HAVE		
FRAC. DIM. ±			BEEN DETERMINED AND ANY DEVIATIONS		
ANGULAR DIM. ±			WILL BE CAUSED FOR REJECTION.		
			REMOVE ALL BURRS AND SHARP EDGES		
5052-H32			DRAWN		CHECKED
TYPE & TEMPER		HEATTREAT. SPEC.	AB		HA
S-404 YELLOW IRIDITE			MECH. DES. APP		FINAL APPROVAL
FINISH & SPEC. NO.			ELEC. DES. APP		MS-1928

REQ. PER. UNIT	USED ON			MS-1929	A
	MODEL	ASS'Y. NO.	DATE		
1	SBE-2		3-14-58		
1	SBE-3		11-30-59		

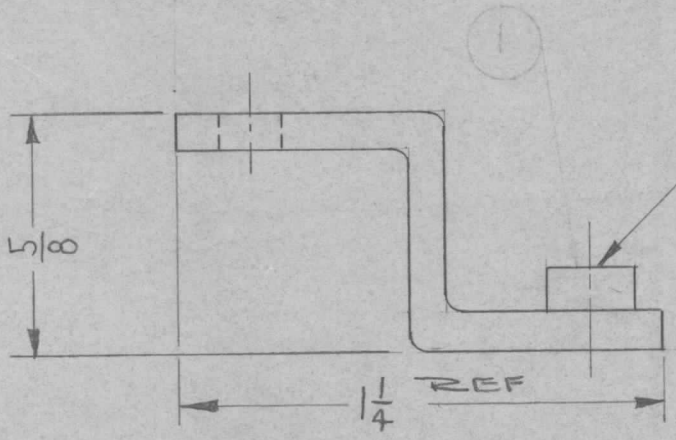


							REQ. ITEM	PART NO.	DESCRIPTION			SYMBOL		
							.064 THK.		THE TECHNICAL MATERIEL CORP.					
							STOCK SIZE		MAMARONECK, NEW YORK					
							ALUMINUM		PLATE, PANEL SUPPORT					
							MATERIAL							
A	1	"A" SLOTS WERE 11/64 HOLES	10/11/60	3156	FD	JW	JW	12-29-59	JW	AK				
ISSUE	ITEM	CHANGED FROM	DATE	CH. NO.	DRAFTS	CHECKER	ENG. APP.	5052-H32	—					
TOLERANCES			SCALE:				TYPE & TEMPER	HEAT TREAT. SPEC.	DRAWN	CHECKED	FINAL APPROVAL			
DEC. DIM. ± .001			MAXIMUM ALLOWABLE TOLERANCES HAVE BEEN DETERMINED AND ANY DEVIATIONS WILL BE CAUSE FOR REJECTION. REMOVE ALL BURRS AND SHARP EDGES				5-404 YELLOW IRIDITE				MS-1929 A			
FRAC. DIM. ± 1/64							FINISH & SPEC. NO.		ELEC. DES. APP	MECH. DES. APP				
ANGULAR DIM. ±														

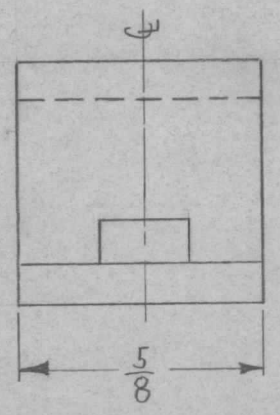
REQ. PER UNIT	USED ON			MS-1940
	MODEL	ASS'Y. NO.	DATE	
4	AX-212	GPT-40K	1/13/60	



- A- $\frac{.221}{.224}$ D. (FOR NT-129-832-6) 1 REQ
- B- $\frac{.13}{.64}$ D. (.203) 1 REQ



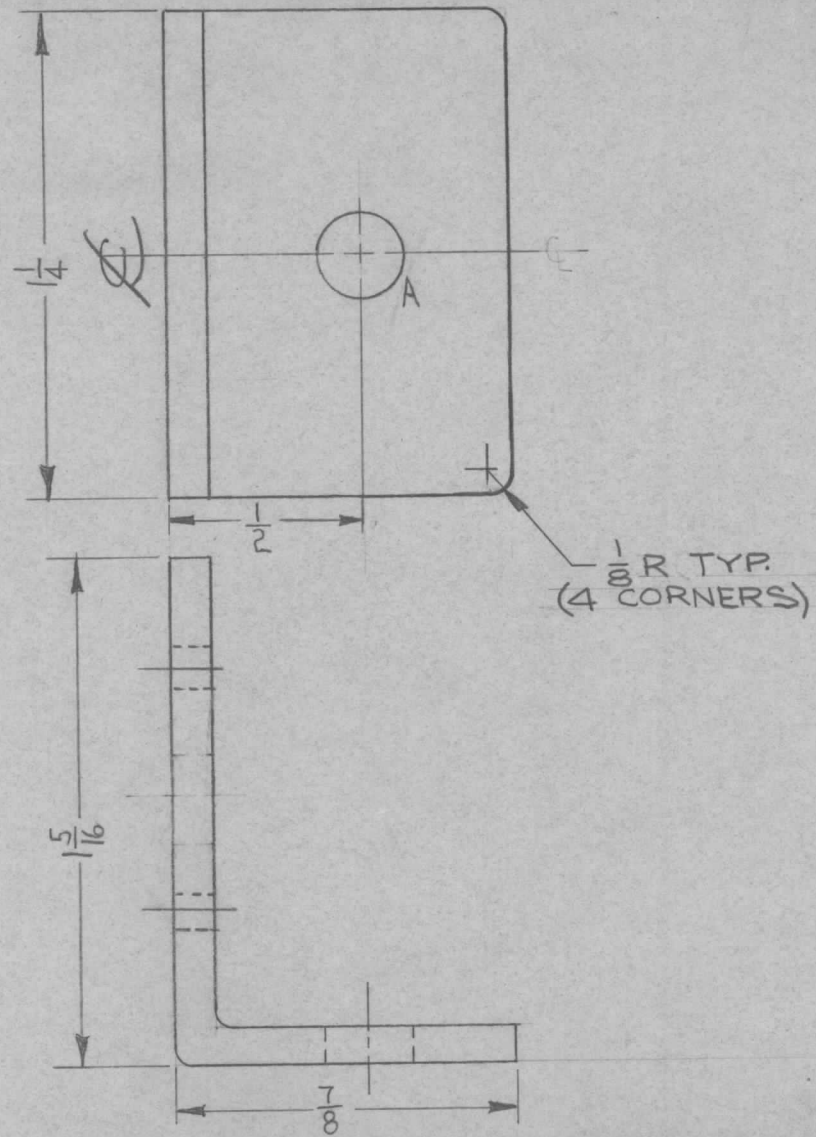
MOUNT (1) NT-129-832-6 AS SHOWN



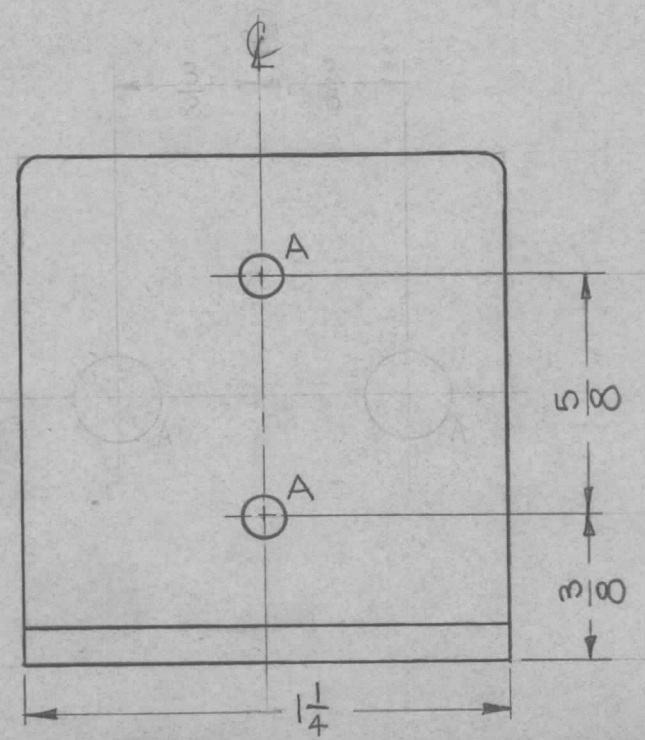
							1	1	NT-129-832-6	NUT, ROUND, SWAGE TYPE	
							REQ.	ITEM	PART NO.	DESCRIPTION	SYMBOL
							.081 THICK			THE TECHNICAL MATERIEL CORP.	
							STOCK SIZE			MAMARONECK, NEW YORK	
							ALUMINUM			BRACKET, SOCKET MTG.,	
							MATERIAL			(CROWBAR DRAWER)	
ISSUE	ITEM	CHANGED FROM	DATE	CH. NO.	DRAFTS	CHECKER	ENG. APP.	5052-H32	M.F. Jule	2B	
TOLERANCES			SCALE: 2:1				TYPE & TEMPER	HEAT TREAT. SPEC.	DRAWN	CHECKED	FINAL APPROVAL
DEC. DIM. ±			MAXIMUM ALLOWABLE TOLERANCES HAVE BEEN DETERMINED AND ANY DEVIATIONS WILL BE CAUSE FOR REJECTION. REMOVE ALL BURRS AND SHARP EDGES				S404 YEL. IRIDITE		Em	RLN	MS-1940
FRAC. DIM. ± 1/64							FINISH & SPEC. NO.			ELEC. DES. APP	MECH. DES. APP
ANGULAR DIM. ±											

REQ. PER UNIT	USED ON		
	MODEL	ASSY. NO.	DATE
1	AX-212	GPT-40K	1/12/60
1	GPT-200K	AX-398	

MS-1941 A



A-7/32 (.218) D. 3 REQ.

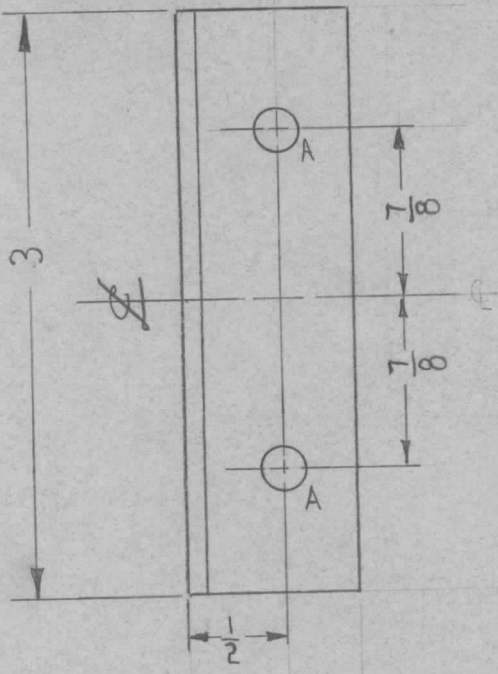


ISSUE	ITEM	CHANGED FROM	DATE	CH. NO.	DRAFTS	CHECKER	ENG. APP.	REQ.	ITEM	PART NO.	DESCRIPTION	SYMBOL	
										.081 THICK	THE TECHNICAL MATERIEL CORP. MAMARONECK, NEW YORK	A	
										STOCK SIZE			
A	1	1/8 R & MODEL # GPT-200K ADDED.	9-4-63	9889	AK	JWA	WFB			ALUMINUM	BRACKET, RESISTOR MTG, SINGLE (CROWBAR DRAWER).		
										MATERIAL			
										5052-H32	M.F.	JWA	WFB
										TYPE & TEMPER	DRAWN	CHECKED	FINAL APPROVAL
										S404 YEL IRIDITE	EM	RLN	MS-1941 A
										FINISH & SPEC. NO.	ELEC. DES. APP.	MECH. DES. APP.	

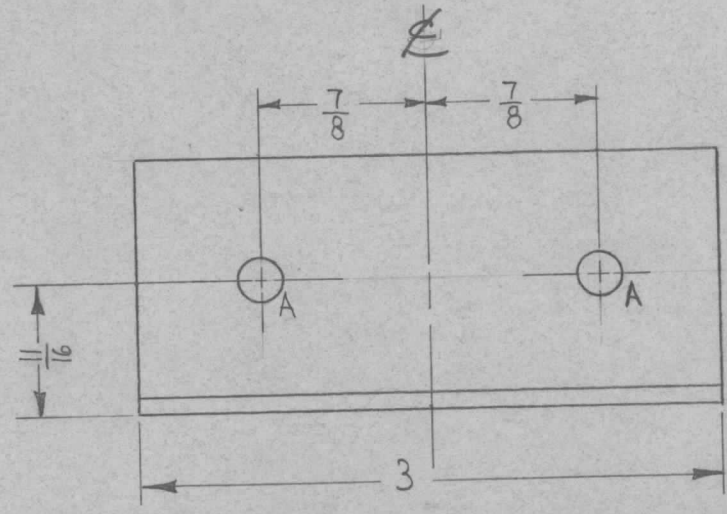
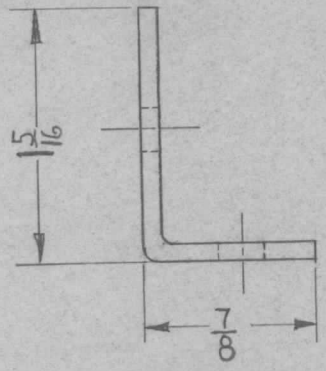
TOLERANCES
DEC. DIM. ±
FRAC. DIM. ± 1/64
ANGULAR DIM. ±

SCALE: 2:1
MAXIMUM ALLOWABLE TOLERANCES HAVE BEEN DETERMINED AND ANY DEVIATIONS WILL BE CAUSE FOR REJECTION.
REMOVE ALL BURRS AND SHARP EDGES

REQ. PER UNIT	USED ON			MS-1942
	MODEL	ASS'Y. NO.	DATE	
3	AX-212	GPT-40K	1/12/60	

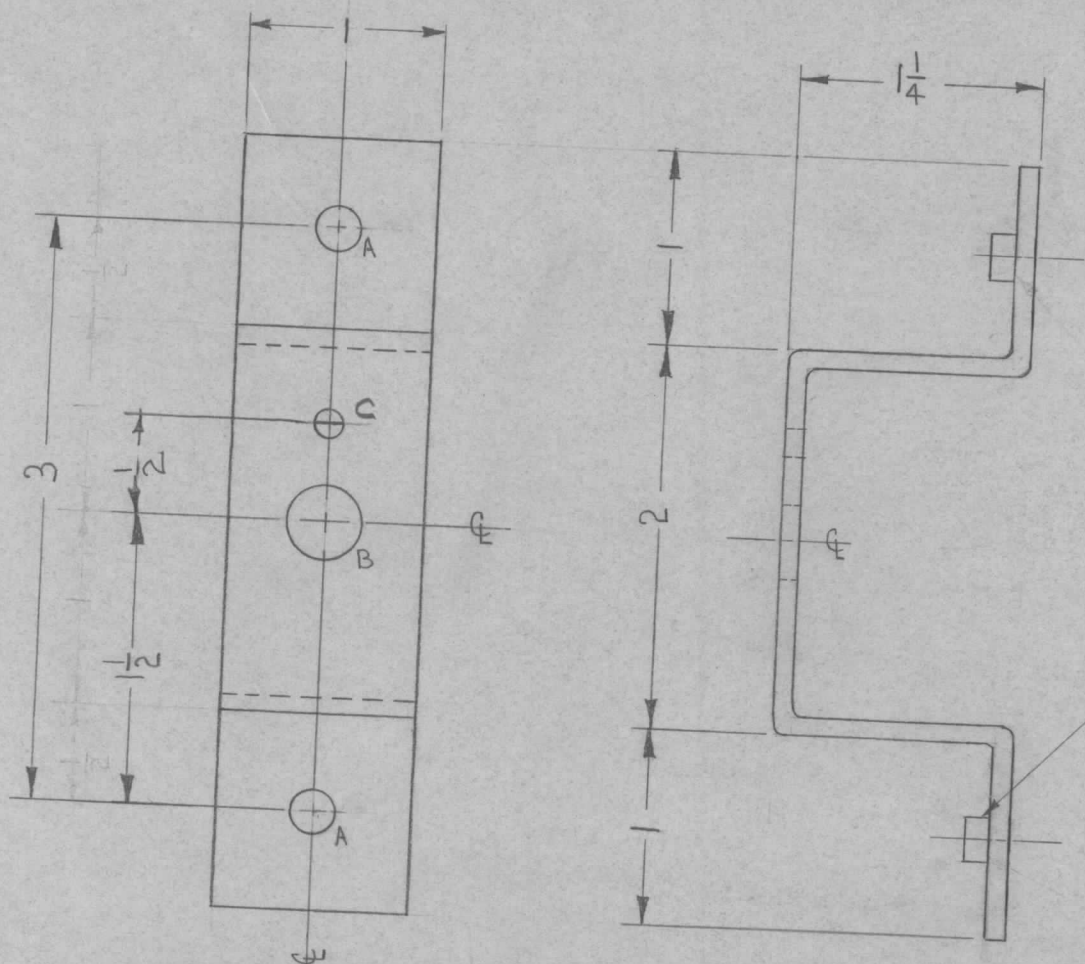


A - 7/32 (.218) D. 4 REQ.



ISSUE	ITEM	CHANGED FROM	DATE	CH. NO.	DRAFTS	CHECKER	ENG. APP.	REQ.	ITEM	PART NO.	DESCRIPTION	SYMBOL		
										.081	THE TECHNICAL MATERIEL CORP. MAMARONECK, NEW YORK BRACKET, RESISTOR MTG., (CROWBAR DRAWER).			
										STOCK SIZE				
										ALUMINUM				
										MATERIAL				
								5052-H32			<div style="display: flex; justify-content: space-between;"> <div> <p>TYPE & TEMPER</p> <p>S404 YEL IRIDITE</p> <p>FINISH & SPEC. NO.</p> </div> <div> <p>HEAT TREAT. SPEC.</p> <p></p> <p></p> </div> <div> <p>DRAWN</p> <p>Em</p> <p>ELEC. DES. APP</p> </div> <div> <p>CHECKED</p> <p>RLN</p> <p>MECH. DES. APP</p> </div> <div> <p>FINAL APPROVAL</p> <p>MS-1942</p> </div> </div>			
TOLERANCES			SCALE: FULL					MAXIMUM ALLOWABLE TOLERANCES HAVE BEEN DETERMINED AND ANY DEVIATIONS WILL BE CAUSE FOR REJECTION. REMOVE ALL BURRS AND SHARP EDGES						
DEC. DIM. ±														
FRAC. DIM. ± 1/64														
ANGULAR DIM. ±														

REQ. PER UNIT	USED ON			MS-1943	A
	MODEL	ASS'Y. NO.	DATE		
1	AX-212	GPT-40K	1/13/60		

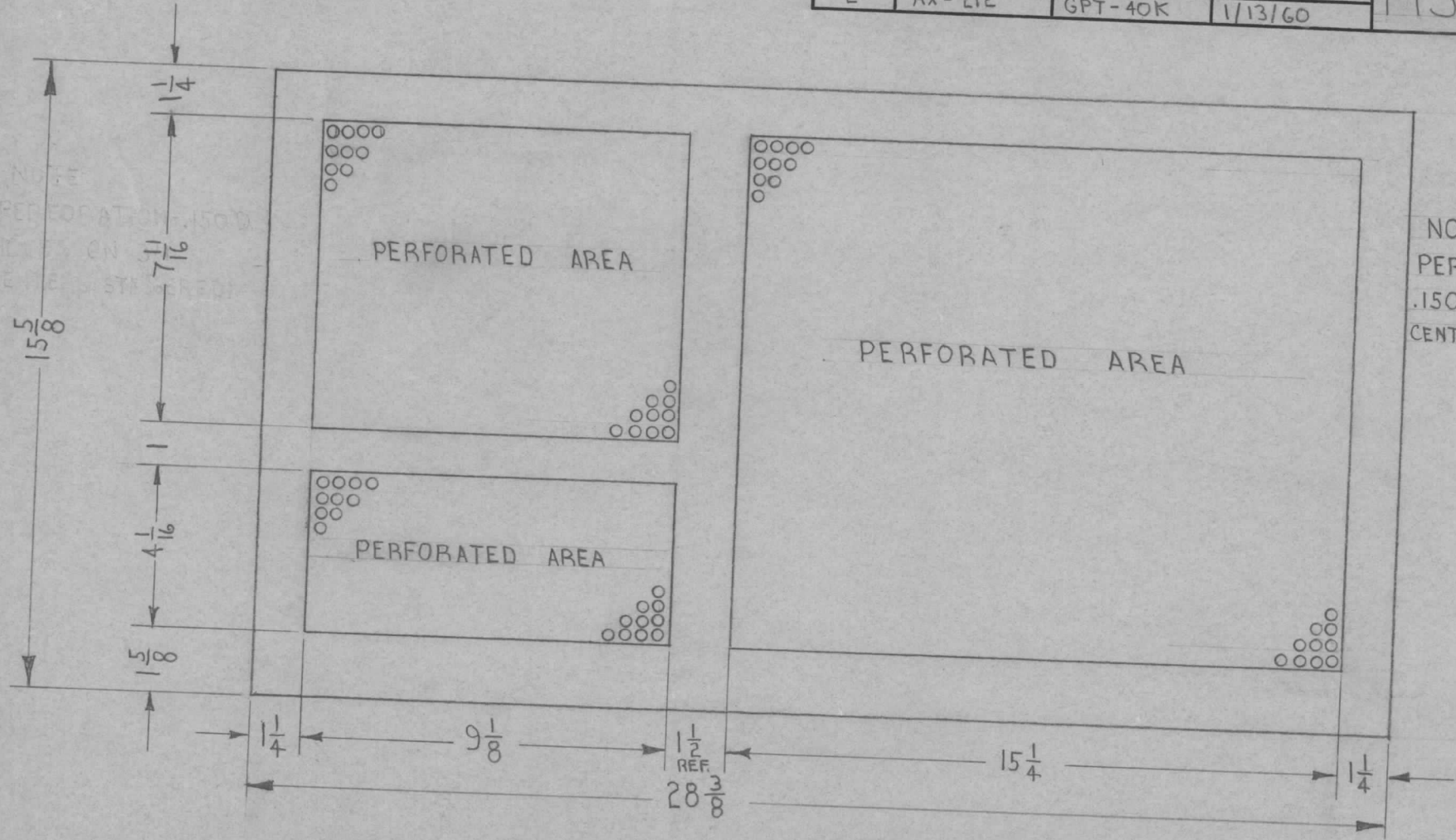


- A - $\frac{221}{224}$ D. (FOR NT-129-832-4) 2 REQ.
- B - $3/8$ (.375) D. 1 REQ.
- C - $9/64$ (.140) D. 1 REQ.

MOUNT NT-129-832-4 IN "A" HOLES AS SHOWN

A		ONE "C" HOLE ($9/64$) D. ADDED	2-1-60	1827	W.F.	J.D.	RLN	2	1	NT-129-832-4	NUT, ROUND, SWAGE TYPE		
ISSUE	ITEM	CHANGED FROM	DATE	CH. NO.	DRAFTS	CHECKER	ENG. APP.	REQ.	ITEM	PART NO.	DESCRIPTION	SYMBOL	
TOLERANCES		SCALE: FULL						.081 THICK		STOCK SIZE			THE TECHNICAL MATERIEL CORP. MAMARONECK, NEW YORK
DEC. DIM. \pm		MAXIMUM ALLOWABLE TOLERANCES HAVE BEEN DETERMINED AND ANY DEVIATIONS WILL BE CAUSE FOR REJECTION. REMOVE ALL BURRS AND SHARP EDGES						ALUMINUM		BRACKET, POTENTIOMETER MTG., (CROWBAR DRAWER)			
FRAC. DIM. $\pm 1/64$								5052-H32		TYPE & TEMPER		HEAT TREAT. SPEC.	
ANGULAR DIM. \pm		S404 YEL. IRIDITE		FINISH & SPEC. NO.		ELEC. DES. APP.		MECH. DES. APP.		MS-1943		A	

REQ. PER UNIT	USED ON			MS-1946
	MODEL	ASS'Y. NO.	DATE	
2	AX-212	GPT-40K	1/13/60	

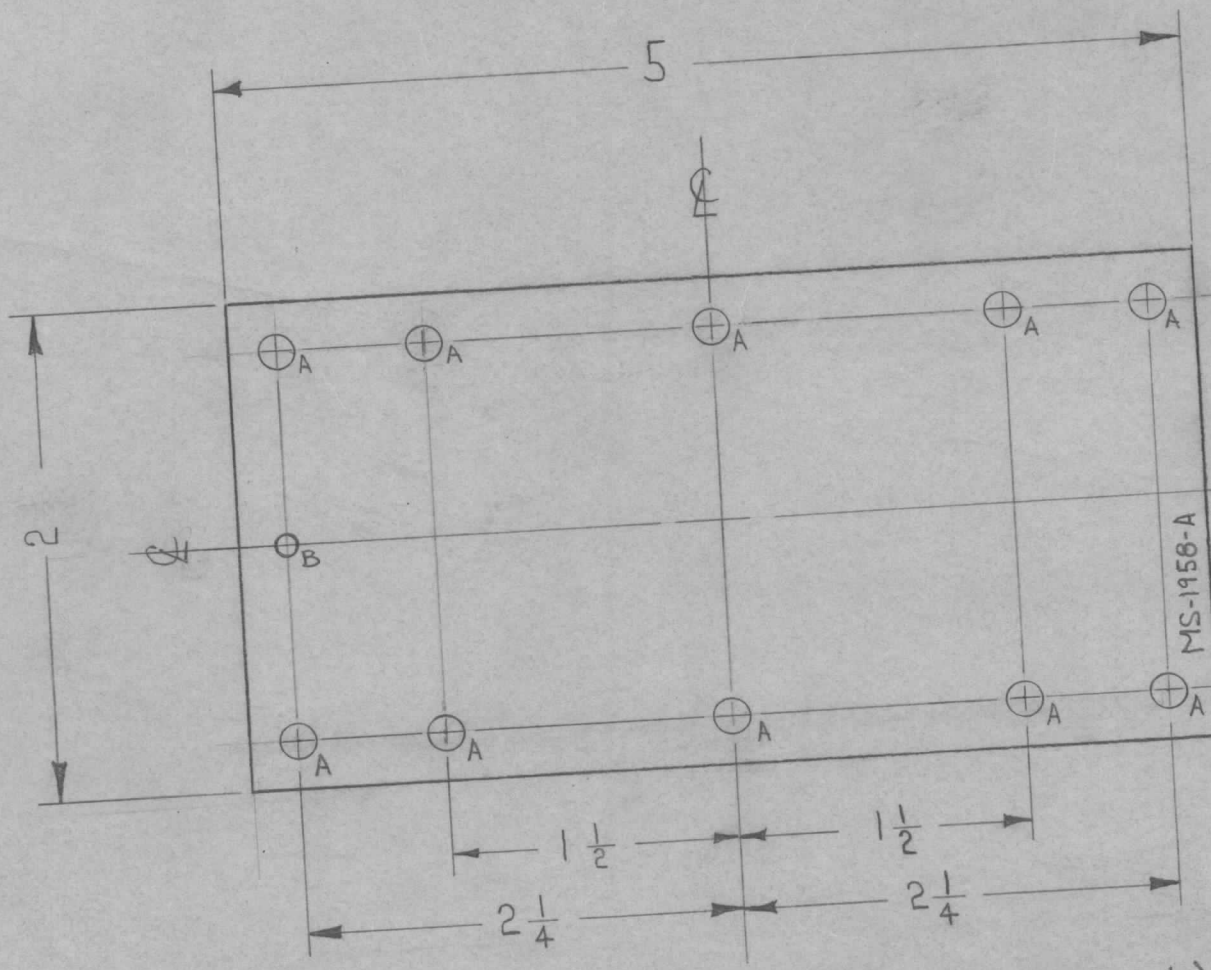


NOTE:
PERFORATION -
.150 D. HOLES ON 3/16
CENTERS (STAGGERED)

REF = MS-1944 - (TOP COVER)
MS-1945 - (BOTTOM COVER)

REQ.	ITEM	PART NO.	DESCRIPTION		SYMBOL
			.064 THICK		
			STOCK SIZE		
			ALUMINUM		
			MATERIAL		
		5052-H32			
		TYPE & TEMPER	HEAT TREAT. SPEC.		
		NONE			
		FINISH & SPEC. NO.		ELEC. DES. APP. MECH. DES. APP.	
ISSUE ITEM			CHANGED FROM		DATE
TOLERANCES			SCALE: 1/4		
DEC. DIM. ±			MAXIMUM ALLOWABLE TOLERANCES HAVE BEEN DETERMINED AND ANY DEVIATIONS WILL BE CAUSE FOR REJECTION.		
FRAC. DIM. ± 1/64			REMOVE ALL BURRS AND SHARP EDGES		
ANGULAR DIM. ±					
			DRAWN		2B
			CHECKED		
			FINAL APPROVAL		
			MS-1946		

REQ. PER UNIT	USED ON			MS-1958	A
	MODEL	ASS'Y. NO.	DATE		
1	AP-104	GPT-40K	1/19/60		



A - 11/64 (.171) D. 10 REQ.
 B - 1/8 (.125) D. 1 REQ.

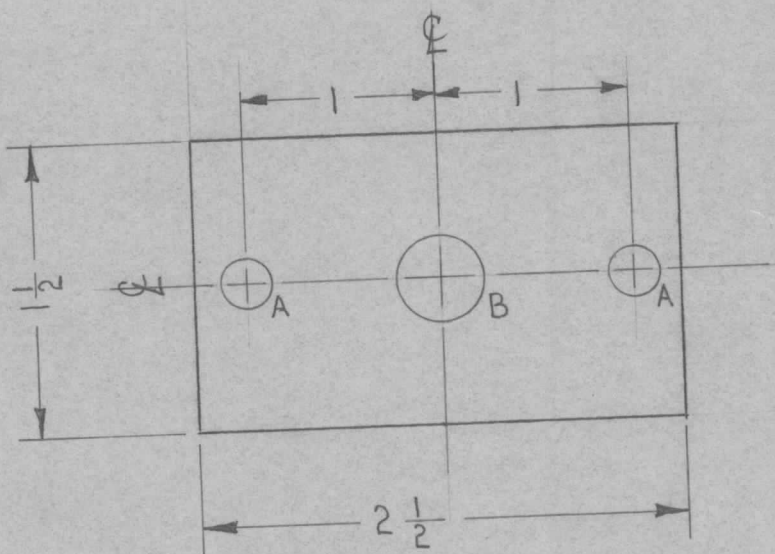
MS-1958-A

STAMP TMC PART NO 1/8 HIGH, GOTWIC

Ref-1LD-G87-(1)

						REQ. ITEM		PART NO.		DESCRIPTION			SYMBOL								
								.064 THK.		THE TECHNICAL MATERIEL CORP.											
								STOCK SIZE		MAMARONECK, NEW YORK											
								ALUMINUM		PLATE, FILTER MTG.											
								MATERIAL		(BIAS SUPPLY)											
A 1 (1) "B" HOLE ADDED						12-11-62		7828		W.F.		M.B.									
ISSUE ITEM						DATE		CH. NO.		DRAFTS		CHECKER		ENG. APP.							
TOLERANCES						SCALE: Not to Scale						DRAWN		CHECKED		FINAL APPROVAL					
DEC. DIM. ±						MAXIMUM ALLOWABLE TOLERANCES HAVE BEEN DETERMINED AND ANY DEVIATIONS WILL BE CAUSE FOR REJECTION. REMOVE ALL BURRS AND SHARP EDGES						E.M.		6		MS-1958		A			
FRAC. DIM. ± 1/64												TYPE & TEMPER		HEAT TREAT. SPEC.		ELEC. DES. APP		MECH. DES. APP			
ANGULAR DIM. ±												S404 YEL. IRIDITE		FINISH & SPEC. NO.							

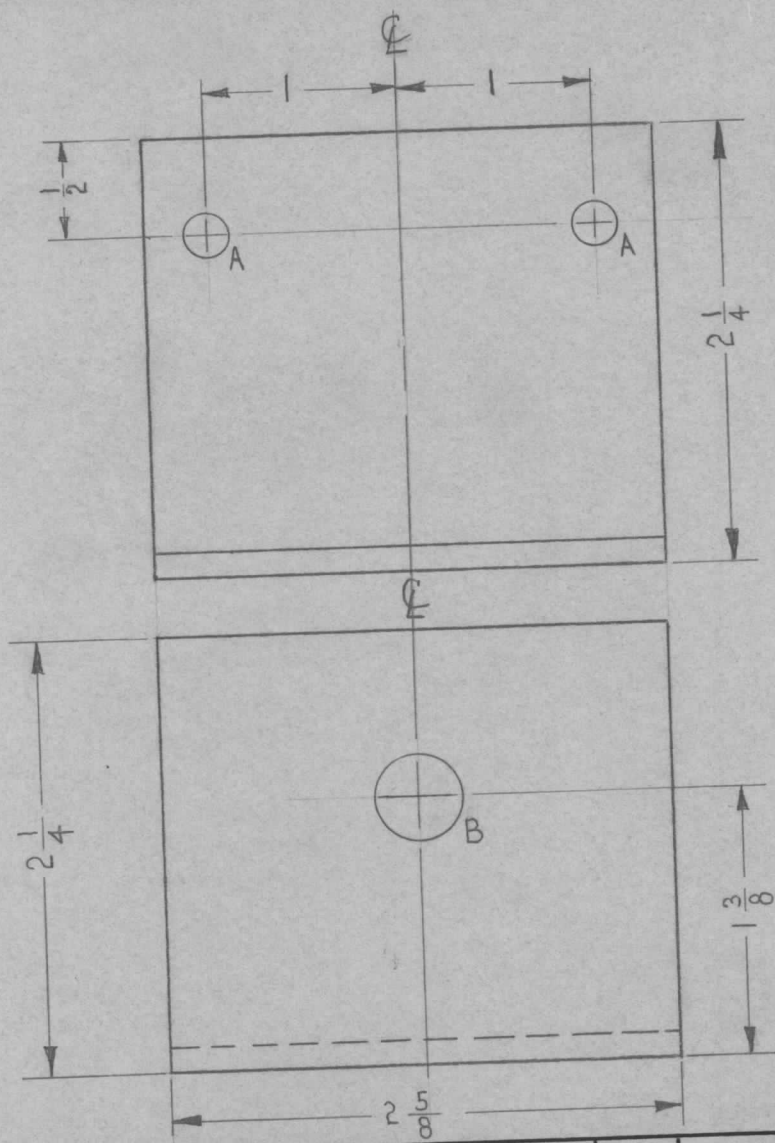
REQ. PER UNIT	USED ON			MS 1959
	MODEL	ASS'Y. NO.	DATE	
3	AX-209	GPT-40K	11/19/60	



- A- .250 / .253 (NT-129-10-32-6) 2 REQ.
- B- 7/16 (FOR BB 117-10) 1 REQ.

		2	1	NT-129-10-32-6	NUT, ROUND, SWAGE TYPE		
		REQ.	ITEM	PART NO.	DESCRIPTION		SYMBOL
		1/8 THK.			THE TECHNICAL MATERIEL CORP.		
		STOCK SIZE			MAMARONECK, NEW YORK		
		ALUMINUM			PLATE, SHAFT ADJ.		
		MATERIAL					
ISSUE	ITEM	CHANGED FROM	DATE	CH. NO.	DRAFTS	CHECKER	ENG. APP.
		TOLERANCES	SCALE: FULL				
		MAXIMUM ALLOWABLE TOLERANCES HAVE BEEN DETERMINED AND ANY DEVIATIONS WILL BE CAUSE FOR REJECTION. REMOVE ALL BURRS AND SHARP EDGES					
		DEC. DIM. ±					
		FRAC. DIM. ± 1/64					
		ANGULAR DIM. ±					
		5052-H32	TYPE & TEMPER		HEATTREAT. SPEC.	DRAWN	CHECKED
		S-404 YEL. IRIDITE	FINISH & SPEC. NO.		ELEC. DES. APP.	MECH. DES. APP.	MS-1959
				M.F.		J.D.	
				O.B.		FINAL APPROVAL	

REQ. PER UNIT	USED ON			MS-1960
	MODEL	ASS'Y. NO.	DATE	
2	AX-209	GPT-40K	11/19/60	

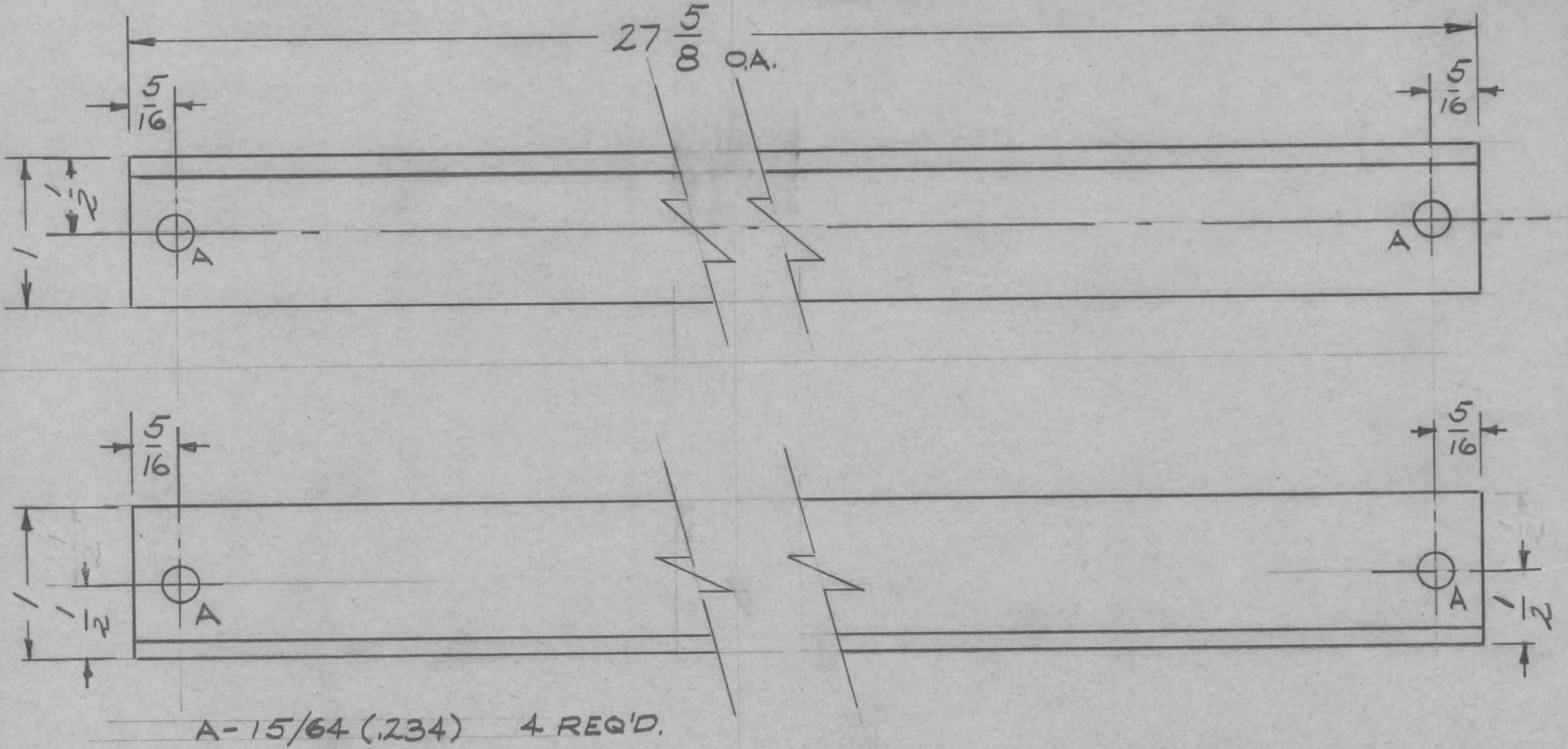


A - 7/32 DIA 2 REQ.
 B - 7/16 (FOR BB 117-10) 1 REQ.

REQ.	ITEM	PART NO.	DESCRIPTION	SYMBOL
		1/8 THK.	THE TECHNICAL MATERIEL CORP. MAMARONECK, NEW YORK	SUPPORT, SHAFT
		STOCK SIZE		
		ALUMINUM		
		MATERIAL		
		5052-H32	<i>M.F.</i>	<i>AB</i>
			DRAWN	CHECKED
		S404 YEL. IRIDITE	<i>R.L.N.</i>	FINAL APPROVAL
		FINISH & SPEC. NO.	ELEC. DES. APP.	MECH. DES. APP.
				MS-1960

ISSUE	ITEM	CHANGED FROM	DATE	CH. NO.	DRAFTS	CHECKER	ENG. APP.
TOLERANCES			SCALE: FULL				
DEC. DIM. ±			MAXIMUM ALLOWABLE TOLERANCES HAVE BEEN DETERMINED AND ANY DEVIATIONS WILL BE CAUSE FOR REJECTION: REMOVE ALL BURRS AND SHARP EDGES				
FRAC. DIM. ± 1/64							
ANGULAR DIM. ±							

REQ. PER UNIT	USED ON			MS-1967 A
	MODEL	ASS'Y. NO.	DATE	
1	AP-104	GPT-46K	1-19-60	

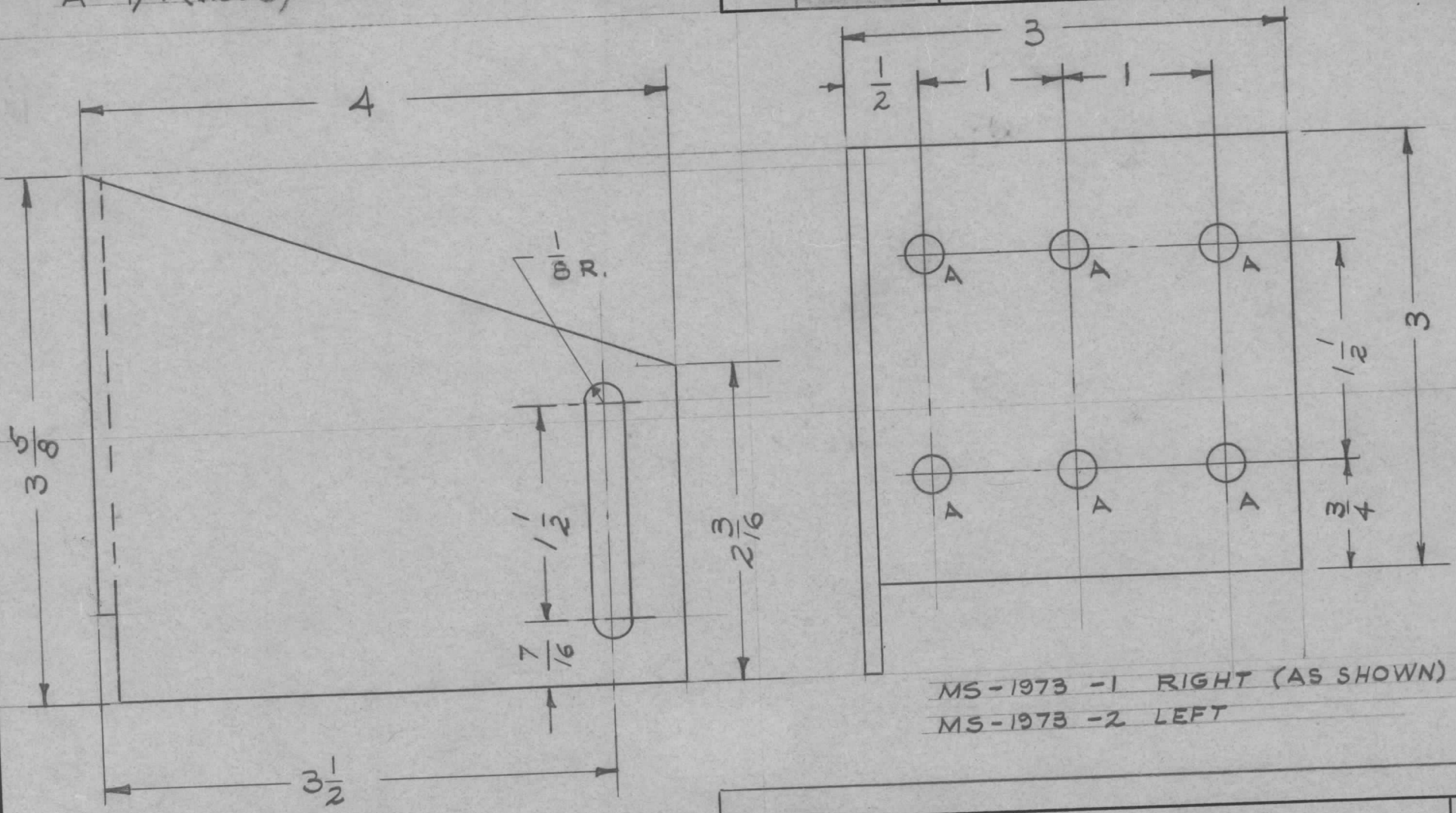


ISSUE	ITEM	CHANGED FROM	DATE	CH. NO.	DRAFTS	CHECKER	ENG. APP.	REQ. ITEM	PART NO.	DESCRIPTION	SYMBOL	
								1 X 31 X 1/8		THE TECHNICAL MATERIEL CORP.		
								STOCK SIZE		MAMARONECK, NEW YORK		
								ALUMINUM		BRACE, REAR		
								MATERIAL		(BIAS SUPPLY DRAWER)		
A	1	QUAN. PER UNIT CHG'D. FROM 2 to 1	2/1/60	1826	16	JLB	2B	6063-T5		DRILLED 1-19-60	JLB	
TOLERANCES			SCALE:					TYPE & TEMPER	HEAT TREAT. SPEC.	DRAWN	CHECKED	FINAL APPROVAL
DEC. DIM. ±			MAXIMUM ALLOWABLE TOLERANCES HAVE BEEN DETERMINED AND ANY DEVIATIONS WILL BE CAUSE FOR REJECTION. REMOVE ALL BURRS AND SHARP EDGES					5404 YEL. IRIDITE		Em	16	MS-1967 A
FRAC. DIM. ± 1/64								FINISH & SPEC. NO.		ELEC. DES. APP	MECH. DES. APP	
ANGULAR DIM. ±												

A - 1/4 (.250) DIA.

6 REQ'D.

REQ. PER UNIT	USED ON		MS-1973	A
	MODEL	ASS'Y. NO.		
			1-19-60	



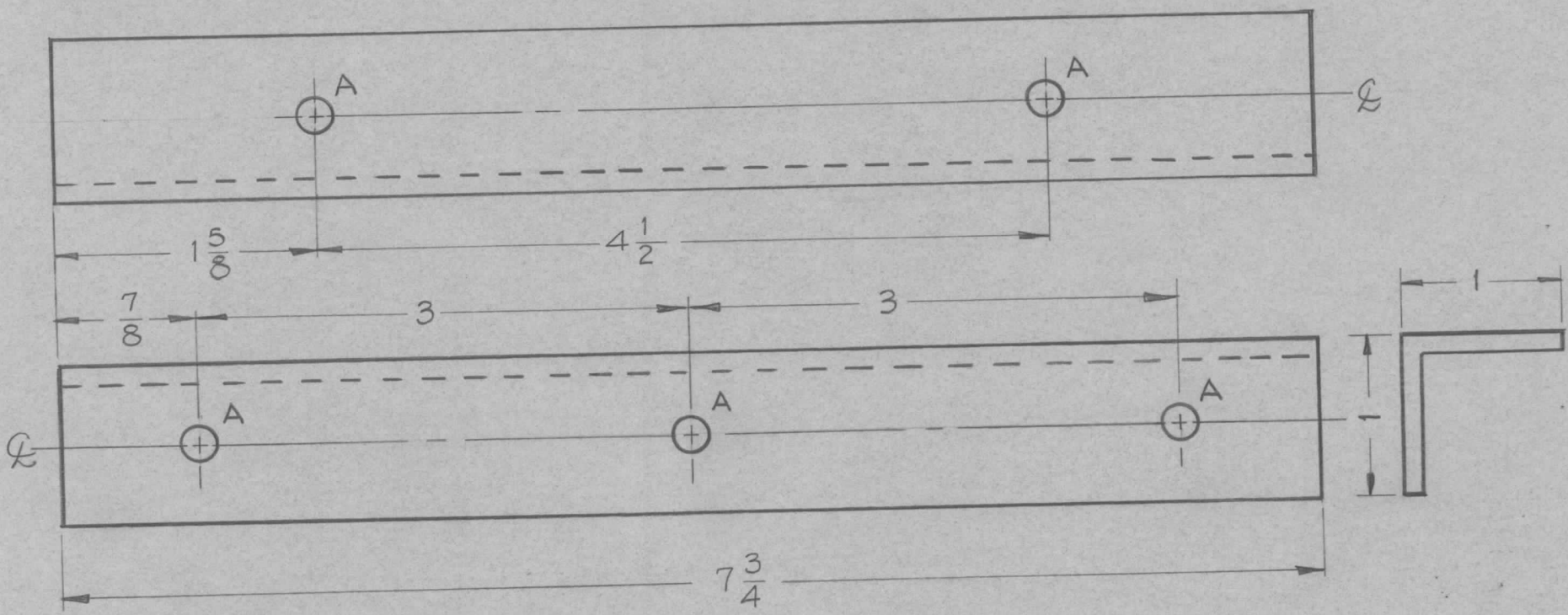
MS-1973 -1 RIGHT (AS SHOWN)
MS-1973 -2 LEFT

ISSUE	ITEM	CHANGED FROM	DATE	CH. NO.	DRAFTS	CHECKER	ENG. APP.
A	1	FINISH SPEC WAS S-254	5-22-63	9082			
TOLERANCES			SCALE:				
DEC. DIM. ±			MAXIMUM ALLOWABLE TOLERANCES HAVE BEEN DETERMINED AND ANY DEVIATIONS WILL BE CAUSE FOR REJECTION. REMOVE ALL BURRS AND SHARP EDGES				
FRAC. DIM. ± 1/64							
ANGULAR DIM. ±							

REQ.	ITEM	PART NO.	DESCRIPTION		SYMBOL
		11 GA.	THE TECHNICAL MATERIEL CORP.		
		STOCK SIZE	MAMARONECK, NEW YORK		
		STEEL	SUPPORT BRACKET, CHASSIS		
		MATERIAL			
		TYPE & TEMPER	HEAT TREAT. SPEC.	DRAWN	CHECKED
		S-520		LORILLO	16
		PAINT TMC-BLUE-GRAY		1-19-60	
		FINISH & SPEC. NO.			FINAL APPROVAL
					MS-1973
					A

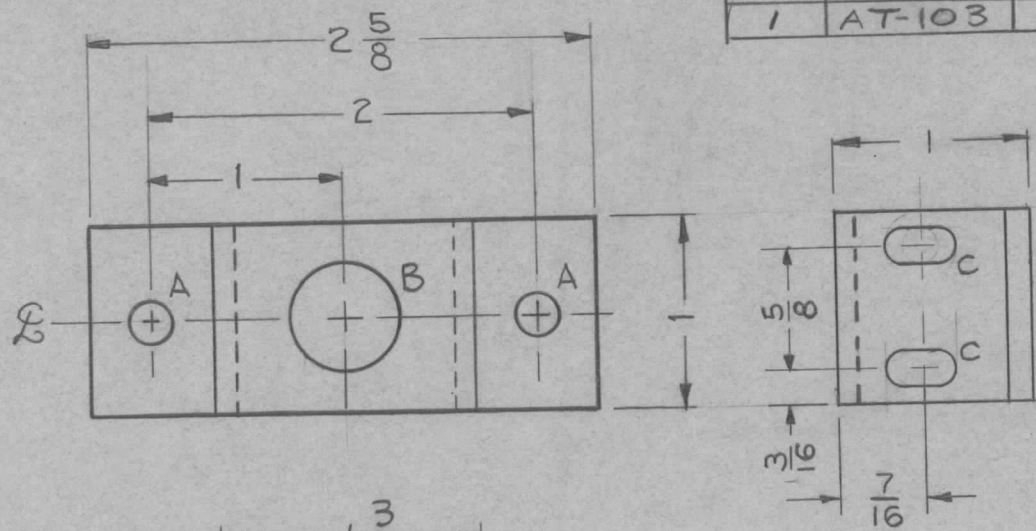
REQ. PER UNIT	USED ON			MS-1977
	MODEL	ASS'Y. NO.	DATE	
2	GPT-40K AX-209		1-22-60	

HOLES
A ~ 7/32 (.218) DIA. REQ. 5

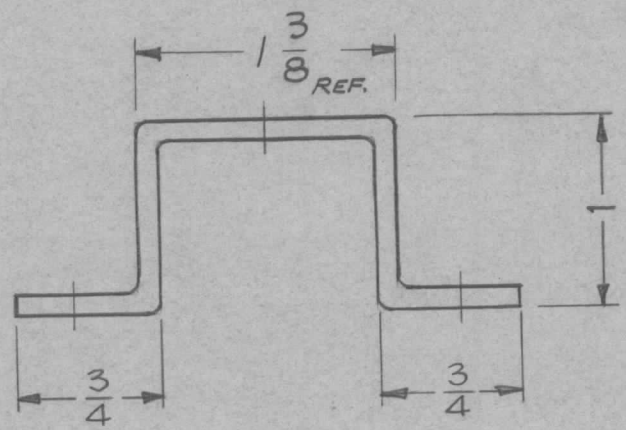


REQ.	ITEM	PART NO.	DESCRIPTION		SYMBOL						
		1 X 1 X 1/8	THE TECHNICAL MATERIEL CORP.								
		STOCK SIZE	MAMARONECK, NEW YORK								
		ALUMINUM	BRACKET, CAPACITOR SUPPORT								
		EXTRUDED									
		MATERIAL									
ISSUE	ITEM	CHANGED FROM	DATE	CH. NO.	DRAFTS	CHECKER	ENG. APP.				
TOLERANCES			SCALE: <i>H</i>								
DEC. DIM. ±			MAXIMUM ALLOWABLE TOLERANCES HAVE BEEN DETERMINED AND ANY DEVIATIONS WILL BE CAUSE FOR REJECTION: REMOVE ALL BURRS AND SHARP EDGES								
FRAG. DIM. ± 1/64							6063-T5				
ANGULAR DIM. ±							TYPE & TEMPER	HEAT TREAT. SPEC.	DRAWN	CHECKED	FINAL APPROVAL
			S-404 IRIDITE		<i>L.B.</i>	<i>J.D.K.</i>	<i>Q.B.</i>				
			FINISH & SPEC. NO.		ELEC. DES. APP	MECH. DES. APP	MS-1977				

REQ. PER UNIT	USED ON			MS-1978 B
	MODEL	ASS'Y. NO.	DATE	
	3 GPT-40K		1-22-60	
1 AX-209				
1 AT-103			10-23-61	



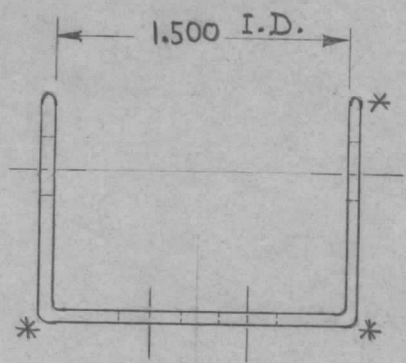
HOLES REQ'D.
 A ~ 7/32 (.218) DIA. 2 REQ.
 B ~ 9/16 (.562) 1 REQ.
 C ~ 11/64 X 11/32 SLOT 2 REQ.



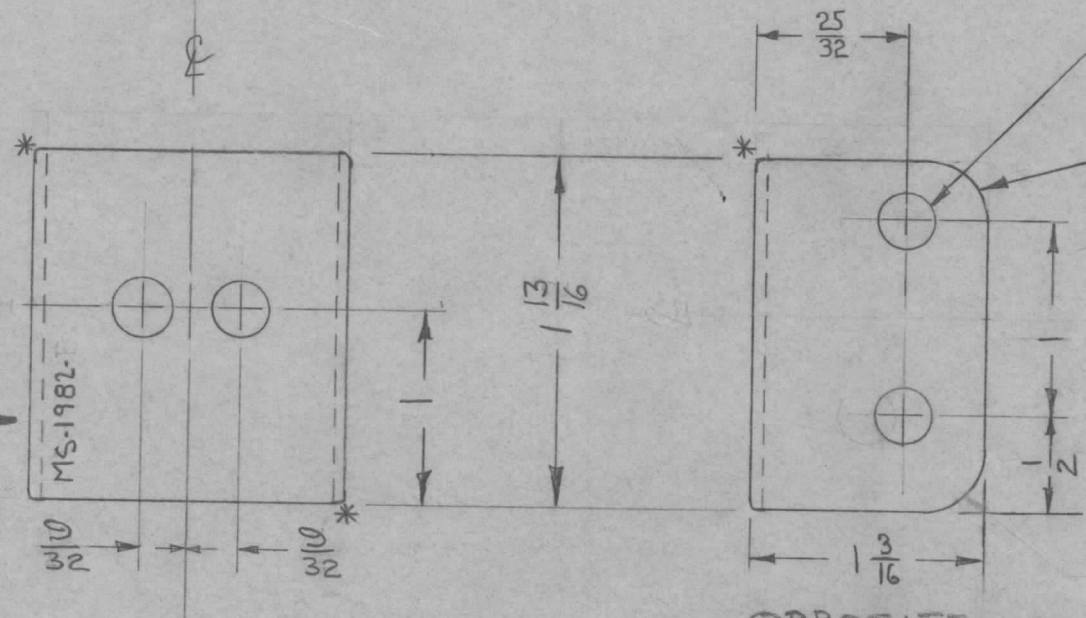
NOTE:
 1/8 RADIUS BENDS

REQ.	ITEM	PART NO.	DESCRIPTION				SYMBOL
		1/8 THK.	THE TECHNICAL MATERIEL CORP.				
		STOCK SIZE	MAMARONECK, NEW YORK				
B	2	ADD 2 "C" HOLES	BRACKET, CAPACITOR SHAFT				
	1	"B" WAS 21/32 HOLE					
A	1	"B" HOLE WAS 9/16 D					
ISSUE	ITEM	CHANGED FROM	DATE	CH. NO.	DRAFTS	CHECKER	ENG. APP.
TOLERANCES			SCALE: <i>H</i>				
DEC. DIM. ±			MAXIMUM ALLOWABLE TOLERANCES HAVE BEEN DETERMINED AND ANY DEVIATIONS WILL BE CAUSE FOR REJECTION. REMOVE ALL BURRS AND SHARP EDGES				
FRAC. DIM. ± <i>1/64</i>							
ANGULAR DIM. ±							
5052-H32			DRAWN		CHECKED		FINAL APPROVAL
S-404 IRIDITE			ELEC. DES. APP		MECH. DES. APP		
FINISH & SPEC. NO.							MS-1978 B

REQ. PER UNIT	USED ON			MS-1982	C
	MODEL	ASS'Y. NO.	DATE		
2	AS-120	GPT-40K	1-23-60		



* NOTE:
ALL EDGES TO BE ROUNDED



ALL HOLES $\frac{9}{32}$ DIA. 6 REQ.

$\frac{5}{16}$ R (TYP)

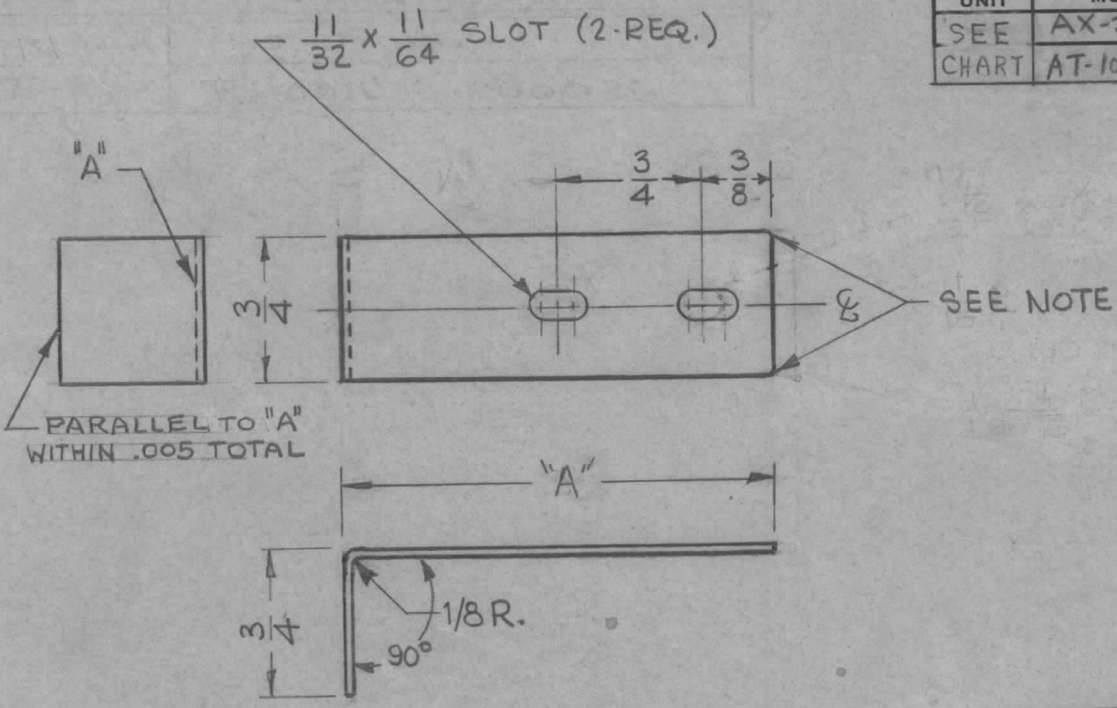
FINISH NOTES:
S-245 BRIGHT SILVER PLATE.
S-423 IRIDITE; AND 18P
SILVER KOTE.

OPPOSITE
SIDE
IDENTICAL

ISSUE	ITEM	CHANGED FROM	DATE	CH. NO.	DRAFTS	CHECKER	ENG. APP.	REQ. ITEM	PART NO.	DESCRIPTION	SYMBOL				
C	1	NOTE ADDED	7-24-63	9552		MP	MPB	$\frac{1}{16}$ THK.		THE TECHNICAL MATERIEL CORP. MAMARONECK, NEW YORK	C				
B	2	FINISH WAS RHODIUM .000025	2-7-63	8181		JL	LB	STOCK SIZE							
A	1	5/16 R. ADDED						BRASS	BRACKET, COIL & WAFER						
										SUPPORT (PA BANDSW)					
TOLERANCES			SCALE: FULL					$\frac{1}{2}$ HARD							
DEC. DIM. \pm			MAXIMUM ALLOWABLE TOLERANCES HAVE BEEN DETERMINED AND ANY DEVIATIONS WILL BE CAUSE FOR REJECTION. REMOVE ALL BURRS AND SHARP EDGES					TYPE & TEMPER	HEATTREAT. SPEC.	DRAWN	CHECKED	FINAL APPROVAL			
FRAC. DIM. $\pm \frac{1}{64}$															
ANGULAR DIM. \pm															
								FINISH & SPEC. NO.	ELEC. DES. APP	MECH. DES. APP	MS-1982	C			

REQ. PER UNIT	USED ON		
	MODEL	ASS'Y. NO.	DATE
SEE	AX-209	GPT-40K	1-25-60
CHART	AT-101	GPT-40K	3-11-60

MS-1984 J



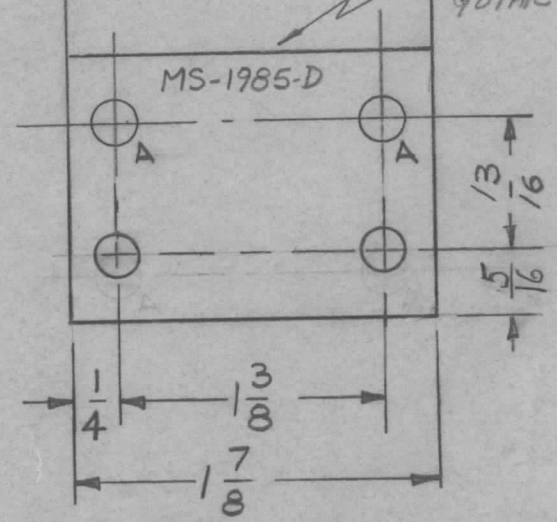
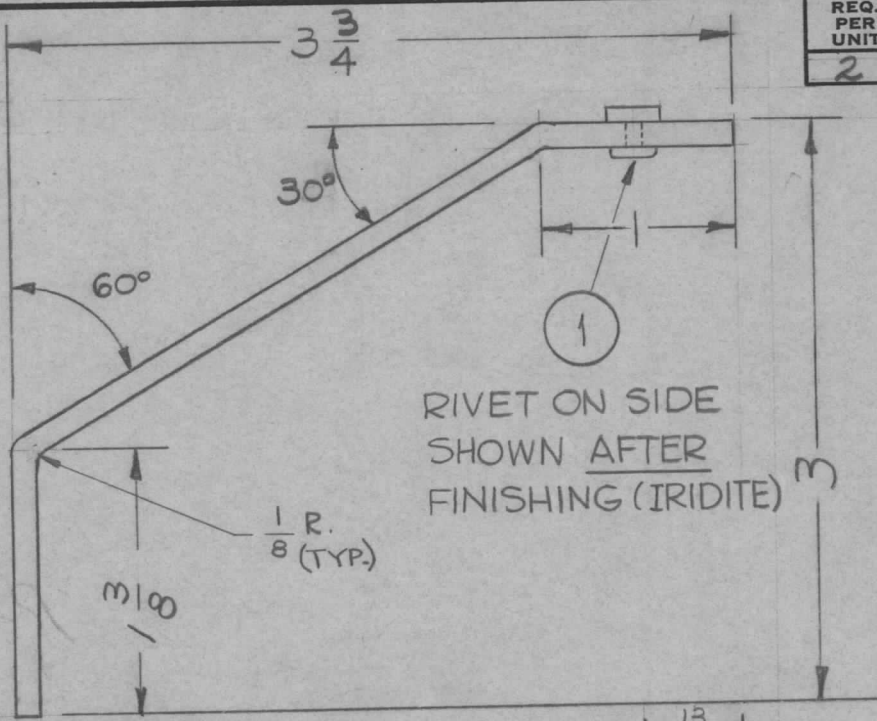
NOTE:
 1- ON MS-1984-2, 1/16 R. ON ALL CORNERS.
 2- ON MS-1984-1, 1/16 R. ON (2) CORNERS (SLOTTED END ONLY)
 3- REMOVE ALL BURRS.
 4- ON MS-1984-2, HEAT TREAT 600°F FOR 2 HOURS IN CLOSED OVEN BEFORE PLATING.

TMC PART NO	FINISH	A.	USED ON MODEL	PER UNIT	ASSY. NO.
MS 1984-1	NONE	2 3/8	AT101 AX209	5	A-1819
MS 1984-2	RHODIUM .000025	2 5/8	AT101	5	USED W/ A-1819

J	2	L.S.VIEW W. NOTES ADD.	5.26.64	11428	NB	@	203
	1	NOTES 3&4 ADDED					
H	1	NOTE 2 ADDED	3-8-63	8486		JMS	203
G	1	HEATING NOTE DELETED	1-30-63	8115		JHE	203
F	2	TYPE WAS HALF HARD					
	1	HEAT TREATMENT NOTE ADDED	9-26-60	3085		JHE	203
	4	SLOTS WERE 13/64 D HOLES					
	3	MS 1984-2 & 1 WERE 3R 3/16	9-8-60	29	R.U.	JB	203
E	2	MS 1984-2 & 4R DELETED					
	1	FINISH CHART INCORPORATED IN MAIN CHART.					
D	1	3/8 DIM. WAS 1/2	6-21-60	2529	CY	JCB	203
C	1	COMPLETE MODIFICATION & REDIM.	4/25/60	2168	CY	JCB	203
B	2	IN AX-209 REQ WAS 10	3-14-60	~			203
	1	MS-1984-3 ADDED					
A	2	MS-1984-3 & 4 DELETED	3-11-60	~			203
	1	AT-101 ADDED					
ISSUE	ITEM	CHANGED FROM	DATE	CH. NO.	DRAFTS	CHECKER	ENG. APP.
TOLERANCES			SCALE: π				
DEC. DIM. \pm			MAXIMUM ALLOWABLE TOLERANCES HAVE BEEN DETERMINED AND ANY DEVIATIONS WILL BE CAUSE FOR REJECTION. REMOVE ALL BURRS AND SHARP EDGES				
FRAC. DIM. \pm 1/64							
ANGULAR DIM. \pm							

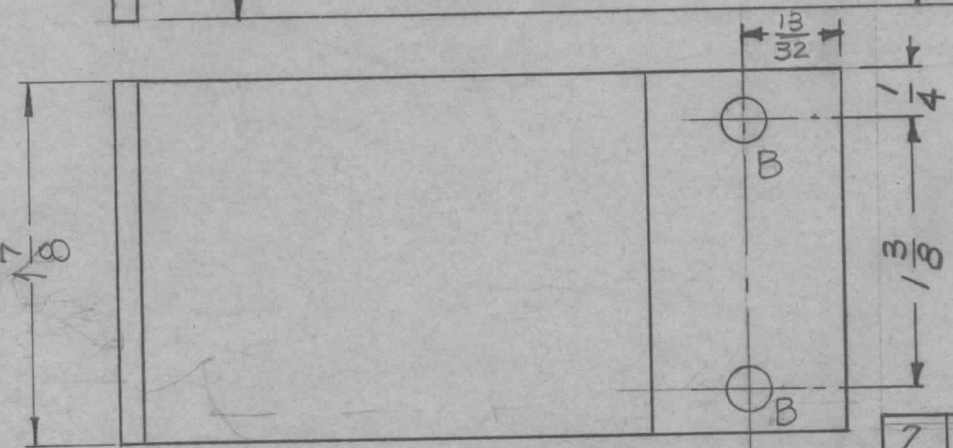
REQ.	ITEM	PART NO.	DESCRIPTION	SYMBOL
			040 THK.	
			STOCK SIZE	
			Beryllium Copper	
			MATERIAL	
			FULLY HARD	
			SEE NOTE	
			TYPE & TEMPER	
			HEAT TREAT. SPEC.	
			FINISH & SPEC. NO.	
			DRAWN	
			CHECKED	
			FINAL APPROVAL	
			MS-1984 J	
			ELEC. DES. APP	MECH. DES. APP

REQ. PER UNIT	USED ON			MS-1985	D
	MODEL	ASS'Y. NO.	DATE		
2	AX-209	GPT-40K	1-19-60		



METAL STAMP TMC
PART NO. 1/8 HIGH,
GOTHIC.

A - 7/32 (.218) DIA. 6 REQ'D.
B - .256 DIA. HOLE FOR 2 REQ.
TE-184-1



2	1	TE-184-1	SPACER, RIVET TYPE	
REQ.	ITEM	PART NO.	DESCRIPTION	SYMBOL
		1/8	THE TECHNICAL MATERIEL CORP.	
		STOCK SIZE	MAMARONECK, NEW YORK	
		ALUMINUM	BRACKET, MOTOR	
		MATERIAL		
		5052 H32		
		TYPE & TEMPER	HEAT TREAT. SPEC.	
		5404 YEL. IRIDITE		
		FINISH & SPEC. NO.	ELEC. DES. APP.	MECH. DES. APP.
			10RILLO 1-19-60	
			file	
			drawn	checked
				FINAL APPROVAL
				MS-1985
				D

D	1	DIM 13/32 WAS 1/2	11-27-62	7719	ef	file	
C	1	1/8R. ADDED	7-31-62	-	G.S.	file	
B	2	2 "B" Holes were "A" Holes	10/24/60	3250	J.C.B.	file	
	1	Item 1 Added					
A	1	5/16 WAS 1/4	3-10-60	-	mf	file	
ISSUE	ITEM	CHANGED FROM	DATE	CH. NO.	DRAFTS	CHECKER	ENG. APP.
TOLERANCES			SCALE: _____				
DEC. DIM. ±			MAXIMUM ALLOWABLE TOLERANCES HAVE BEEN DETERMINED AND ANY DEVIATIONS WILL BE CAUSE FOR REJECTION.				
FRAC. DIM. ±			REMOVE ALL BURRS AND SHARP EDGES				
ANGULAR DIM. ±							
			1/64				