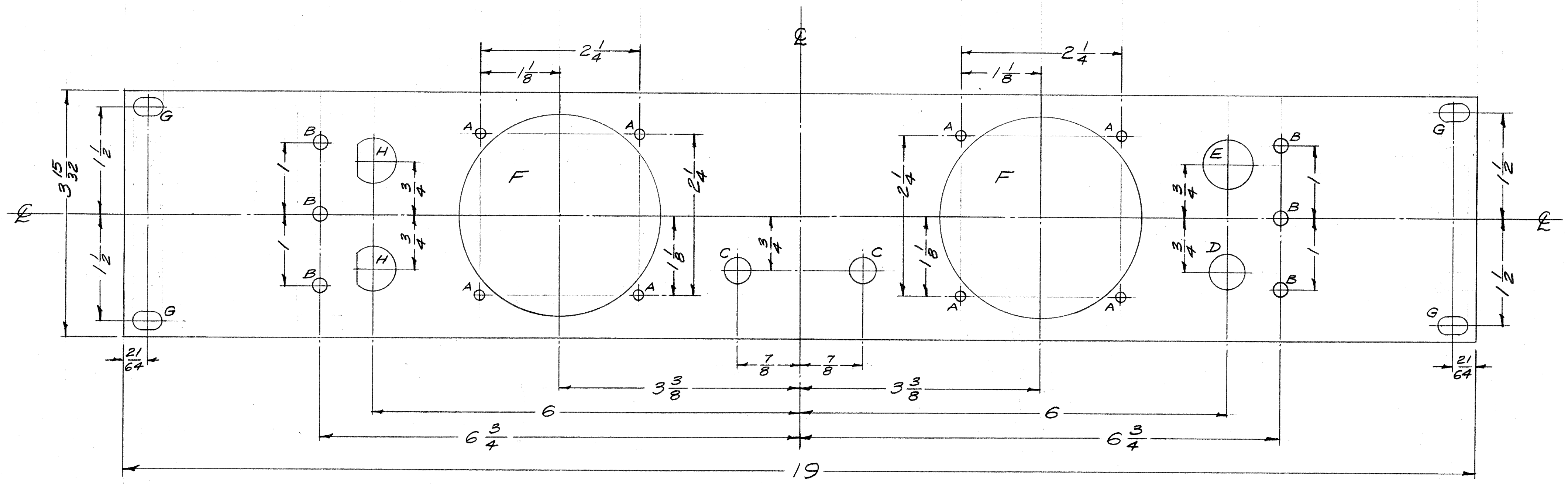


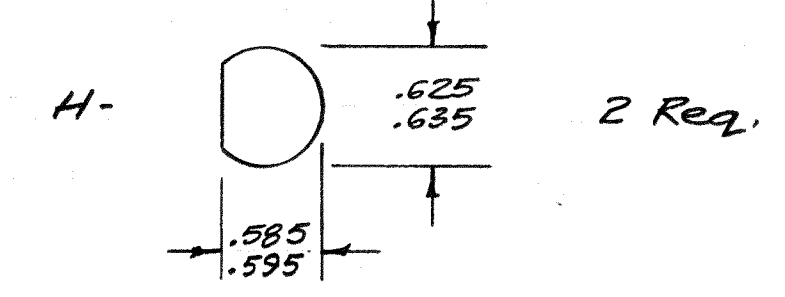
IF IT IS FOUND DESIRABLE TO CHANGE ANY TOLERANCE OR OTHER DETAIL SPECIFIED ON THIS DRAWING NOTIFY THE PURCHASER PROMPTLY.
 MAXIMUM ALLOWABLE TOLERANCES HAVE BEEN DETERMINED AND DEVIATIONS WILL BE CAUSE FOR REJECTION.
 REMOVE ALL BURRS AND SHARP EDGES

NOTICE TO PERSONS RECEIVING THIS DRAWING
 THE TECHNICAL MATERIEL CORPORATION claims proprietary right in the material disclosed hereon. This drawing is issued in confidence for engineering information only and may not be reproduced or used to manufacture anything shown hereon without permission from THE TECHNICAL MATERIEL CORPORATION to the user. This drawing is loaned for mutual assistance and is subject to recall at any time.
 Property of:
 THE TECHNICAL MATERIEL CORPORATION
 MAMARONECK, NEW YORK

FRONT VIEW



- A - $\frac{3}{64}$ (.140) D. 8 Req.
- B - $\frac{7}{32}$ (.218) D. 6 Req.
- C - $\frac{3}{8}$ (.375) D. 2 Req.
- D - $\frac{17}{32}$ (.531) D. 1 Req.
- E - $\frac{11}{16}$ (.687) D. 1 Req.
- F - $2 \frac{13}{16}$ (2.812) D. 2 Req.
- G - $\frac{1}{4} \times \frac{13}{32}$ SLOT 4 Req.



- MACHINING**
1. Lateral Bow of Panel Must be kept to .031 Tolerance.
 2. Mill all Edges.
 3. Holes Must be Drilled.
 4. Panel Must be Free of All Machining Marks, Gouges, & Scratches.

FINISH NOTE -
 S404 YELLOW TRIDITE
 S114 Zinc Chromate Primer } Front & Edges
 S115 Smooth Grey Enamel } Only

4 LD-511 Lettering, Rear
 Ref: 8LD-502 Engraving, Front

1	S-404 YEL. IRIDITE WAS 10/19/59	1001	EMW
ISSUE	CHANGED FROM	DATE	CHK. NO. DRAFTS
ALL OTHERS	DEC. DIM. \pm FRAC. DIM. \pm 1/64 ANGULAR DIM. \pm	SCALE: FULL DRILL PUNCH, COMMERCIAL STOCK SIZES AND MANUFACTURERS TOLERANCES ARE NOT INCLUDED.	DO NOT SCALE

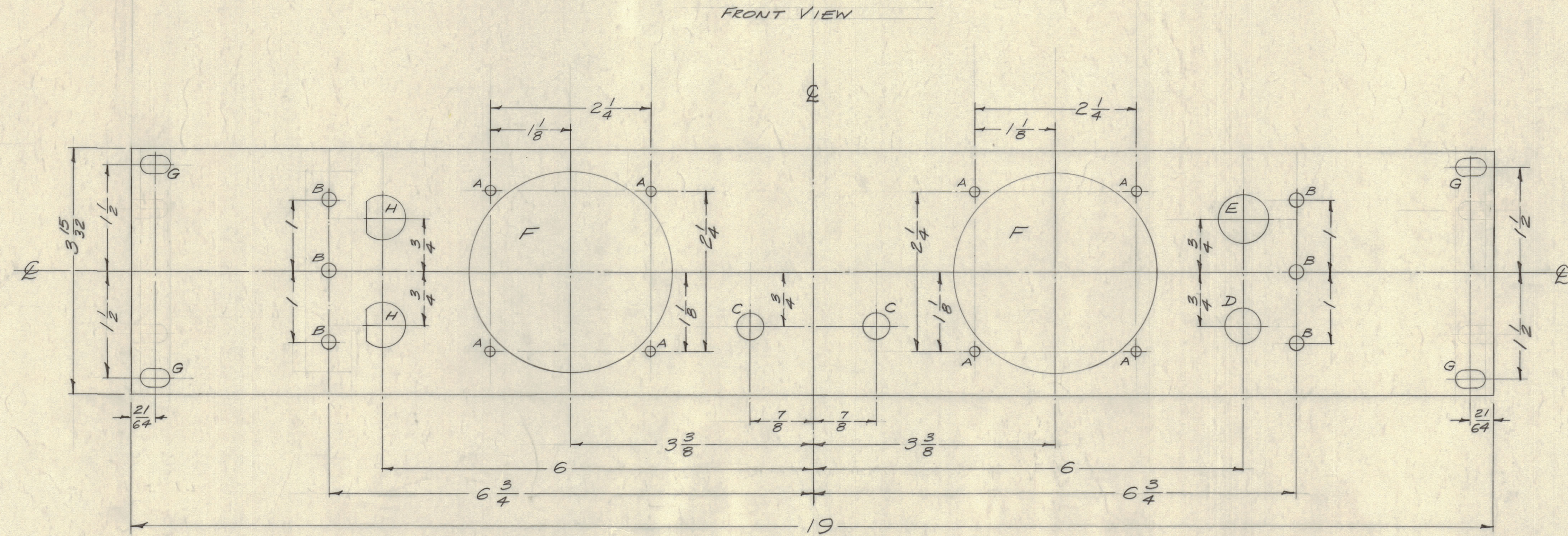
1	SLM	P/O OPTIOK	2-10-59
REQ PER UNIT	MODEL	PROJECT NO.	DATE
		ASS'Y. NO.	

REQ. ITEM	PART NO.	DESCRIPTION	SYMBOL
3/16 Thk.		THE TECHNICAL MATERIEL CORP. MAMARONECK, NEW YORK	
Aluminum		PANEL, FRONT,	
MATERIAL	WEIGHT PER PC.	514 SIDE BAND LEVEL MONITOR	
2024-T3	6 1/10/59		
TYPE & TEMPER	DRAWN	ELEC. DES. APP.	MECH. DES. APP.
	HEAT TREAT. SPEC.	CHECKED	FINAL APPROVAL
	See Finish Note		MS-1525 A

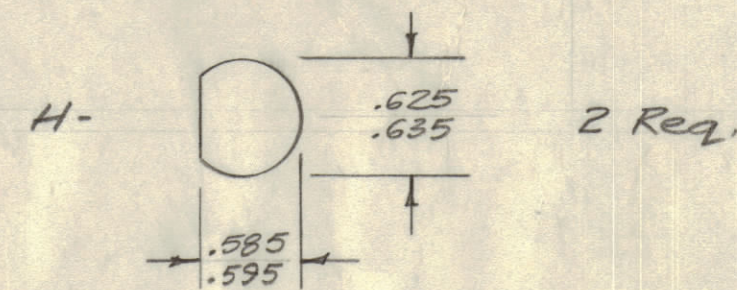
MS-1525 A

IF IT IS FOUND DESIRABLE TO CHANGE ANY TOLERANCE OR OTHER DETAIL SPECIFIED ON THIS DRAWING NOTIFY THE PURCHASER PROMPTLY.
 MAXIMUM ALLOWABLE TOLERANCES HAVE BEEN DETERMINED AND DEVIATIONS WILL BE CAUSE FOR REJECTION. REMOVE ALL BURRS AND SHARP EDGES

NOTICE TO PERSONS RECEIVING THIS DRAWING
 THE TECHNICAL MATERIEL CORPORATION claims proprietary right in the material disclosed hereon. This drawing is issued in confidence for engineering information only and may not be reproduced or used to manufacture anything shown hereon without permission from THE TECHNICAL MATERIEL CORPORATION to the user. This drawing is loaned for mutual assistance and is subject to recall at any time.
 Property of:
 THE TECHNICAL MATERIEL CORPORATION
 MAMARONECK, NEW YORK



- A - $\frac{9}{64}$ (.140) D. 8 Req.
- B - $\frac{7}{32}$ (.218) D. 6 Req.
- C - $\frac{3}{8}$ (.375) D. 2 Req.
- D - $\frac{17}{32}$ (.531) D. 1 Req.
- E - $\frac{11}{16}$ (.687) D. 1 Req.
- F - $2 \frac{13}{16}$ (2.812) D. 2 Req.
- G - $\frac{1}{4} \times \frac{13}{32}$ SLOT 4 Req.



- MACHINING**
1. Lateral Bow of Panel Must be kept to .031 Tolerance.
 2. Mill all Edges.
 3. Holes Must be Drilled.
 4. Panel Must be Free of All Machining Marks, Gouges, & Scratches.

FINISH NOTE-
 S404 YELLOW IRIDITE
 S114 Zinc Chromate Primer 2 Front & Edges
 S115 Smooth Grey Enamel } Only

4 LD-511 Lettering, Rear
 Ref: 8LD-502 Engraving, Front

REQ. ITEM	PART NO.	DESCRIPTION	SYMBOL
		3/16 THK.	
		STOCK SIZE	
		ALUMINUM	
		MATERIAL WEIGHT PER PC	
		2024-T3	
		TYPE & TEMPER	
		HEAT TREAT SPEC.	
		See Finish Note	
		FINISH & SPEC. NO.	

ISSUE	ITEM	CHANGED FROM	DATE	CN. NO.	DRAFTS	CHECKER	ENG. APP.
A	1	S-404 YEL. IRIDITE WAS 107 S-101 CAUSTIC DIP	1/19/59	1001	EMW		

TOLERANCES: SCALE: FULL DO NOT SCALE

ALL DEC. DIM. ±
 OTHERS FRACTIONAL DIM. ± 1/64
 ANGULAR DIM. ±

DRILL PUNCH COMMERCIAL STOCK
 SIZES AND MANUFACTURERS
 TOLERANCES ARE NOT INCLUDED.

REQ. PER UNIT	MODEL	PROJECT NO.	ASSY. NO.	DATE
1	SLM	P/O GPT10K		2-10-59

MS-1525
 A