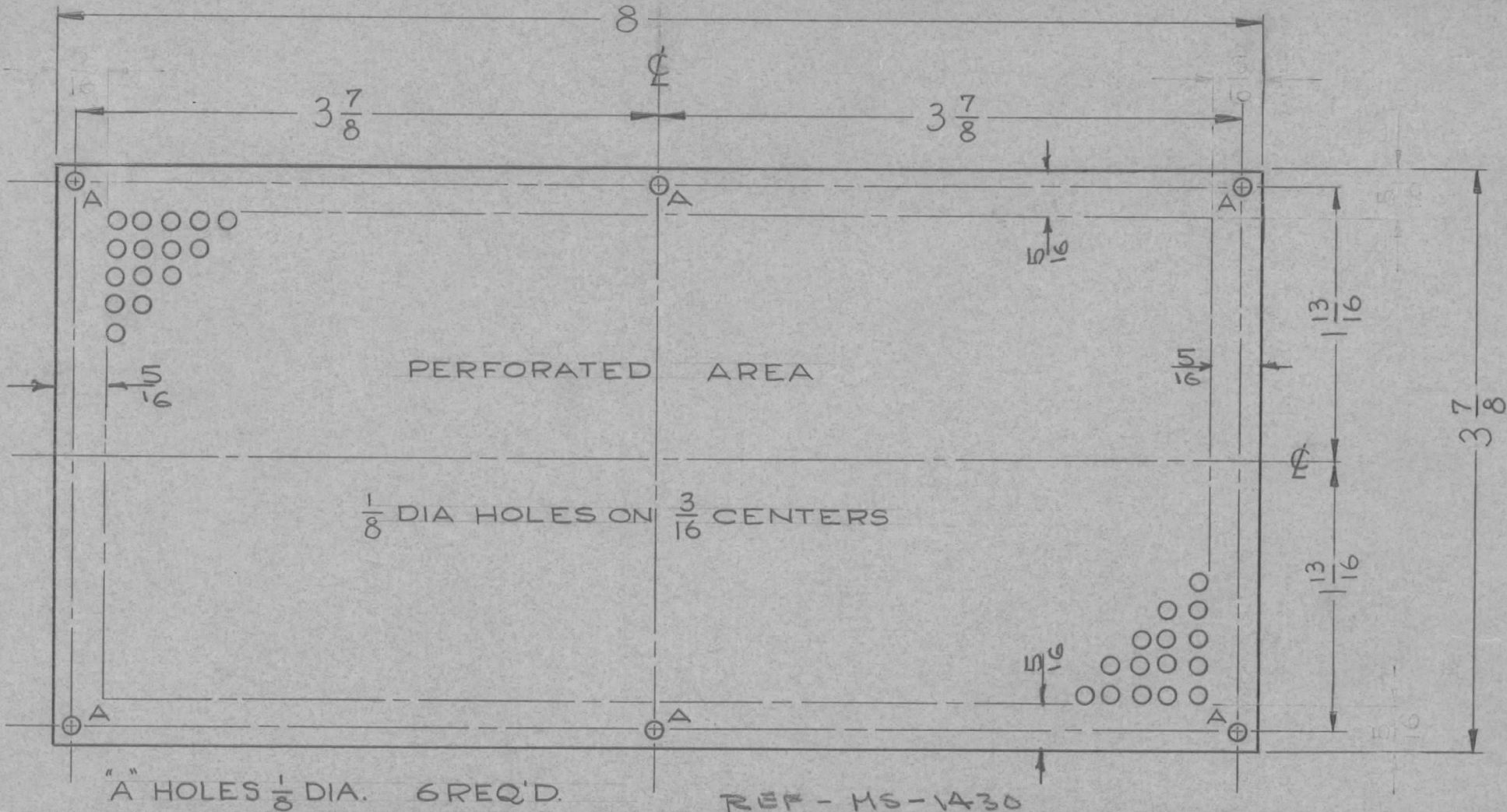
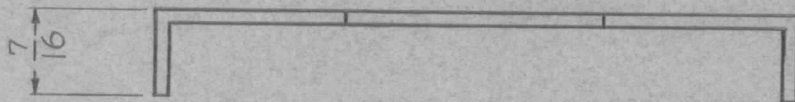


REQ. PER UNIT	USED ON			MS-1414 A
	MODEL	ASS'Y. NO.	DATE	
2	GPT-10, 100	IPA	11-18-58	



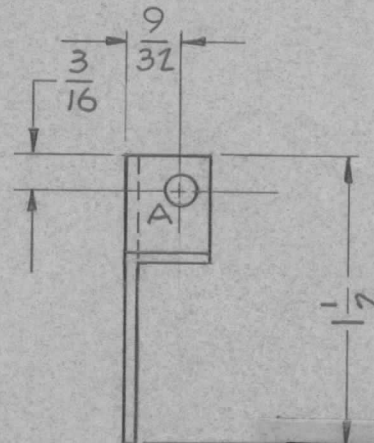
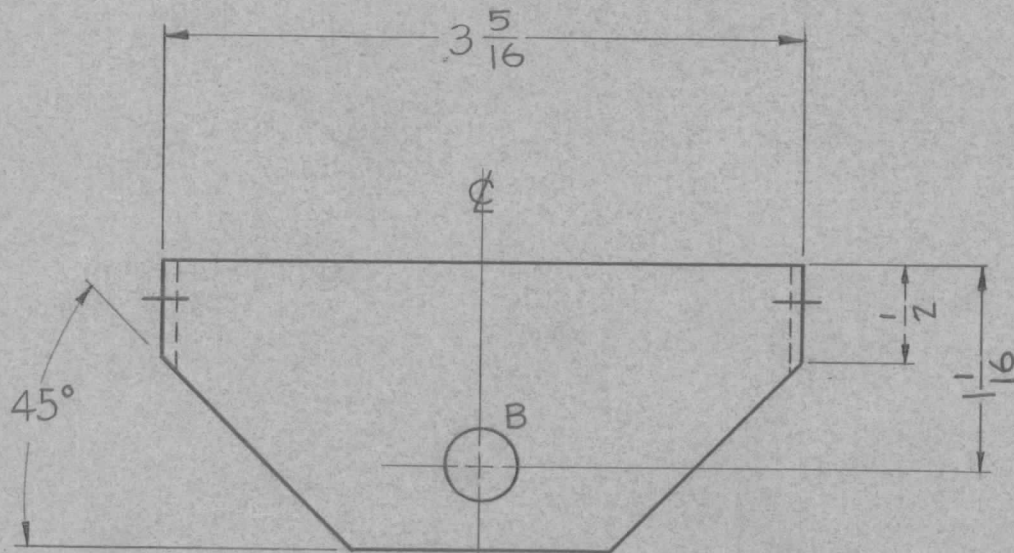
REQ.	ITEM	PART NO.	DESCRIPTION			SYMBOL	
		.064	THE TECHNICAL MATERIEL CORP.				
		STOCK SIZE	MAMARONECK, NEW YORK				
A	1	ALUMINUM	SIDE VENT				
		MATERIAL					
ISSUE	ITEM	CHANGED FROM	DATE	CH. NO.	DRAFTS	CHECKER	ENG. APP.
			12-8-59	1001			EMP
TOLERANCES			SCALE: SUPERSEDES ENG. DWG. NO. 1-1305				
DEC. DIM. ±			MAXIMUM ALLOWABLE TOLERANCES HAVE BEEN DETERMINED AND ANY DEVIATIONS WILL BE CAUSE FOR REJECTION: REMOVE ALL BURRS AND SHARP EDGES				
FRAC. DIM. ± 1/64							
ANGULAR DIM. ±							
5052 H-32		J.C. BIELE		LJQ		ARB	
TYPE & TEMPER		HEAT TREAT. SPEC.		DRAWN		CHECKED	
5404-Y2 IRIDITE							
FINISH & SPEC. NO.		ELEC. DES. APP.		MECH. DES. APP.		MS-1414 A	

REQ. PER UNIT	USED ON			MS-1417 A
	MODEL	ASS'Y. NO.	DATE	
1	RTF-2	MULT.	11-21-58	



A ~ 5/32 (.156) DIA.
 B ~ 3/8 (.375) DIA.

2 HOLES REQ'D
 1 HOLE REQ'D



UNLESS OTHERWISE SPECIFIED
 DIMENSIONS ARE IN INCHES AND INCLUDE
 CHEMICALLY APPLIED OR PLATED FINISHES

DECIMALS	TOLERANCES	FRACTIONS
.X ± .05		± 1/64
.XX ± .01		ANGLES
.XXX ± .005		± 0° 30'

CUT HERE
 GUARANTEED
 2-66

REF: LD-474

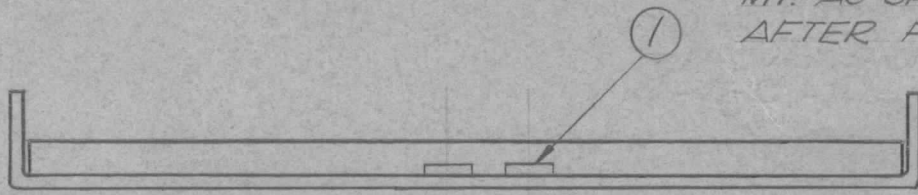
REQ.	ITEM	PART NO.	DESCRIPTION				SYMBOL
		.064	THE TECHNICAL MATERIEL CORP.				
		STOCK SIZE	MAMARONECK, NEW YORK				
		ALUMINUM	BRACKET, SWITCH SUPPORT				
		MATERIAL					
		5052-H-32	J.C. BIELE	<i>[Signature]</i>	<i>[Signature]</i>		
		TYPE & TEMPER	DRAWN	CHECKED	FINAL APPROVAL		
		HEAT TREAT. SPEC.			MS-1417 A		
		FINISH & SPEC. NO.	ELEC. DES. APP.	MECH. DES. APP.			

ISSUE	ITEM	CHANGED FROM	DATE	CH. NO.	DRAFTS	CHECKER	ENG. APP.
A	1	S404-Y-IRIDITE WAS S101-CAUSTIC DIP	12-8 59	1001	P		EMN

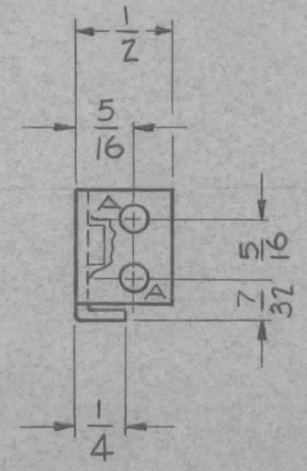
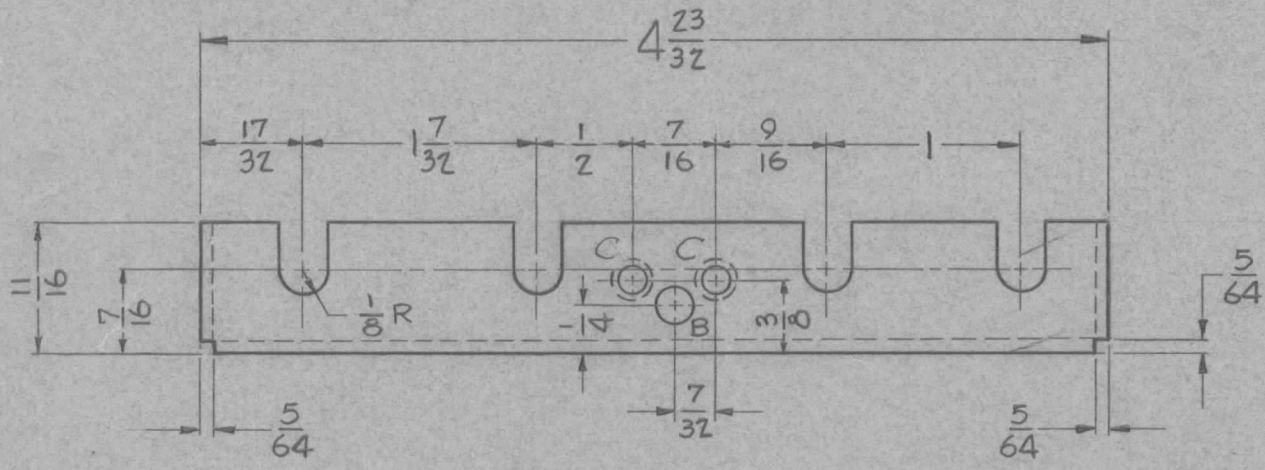
TOLERANCES	SCALE:
DEC. DIM. ±	MAXIMUM ALLOWABLE TOLERANCES HAVE BEEN DETERMINED AND ANY DEVIATIONS WILL BE CAUSE FOR REJECTION.
FRAC. DIM. ±	REMOVE ALL BURRS AND SHARP EDGES
ANGULAR DIM. ±	

REQ. PER UNIT	USED ON			MS-1419	B
	MODEL	ASS'Y. NO.	DATE		
1	RTF-2		12-3-58		

MT. AS SHOWN IN 2 'C' HOLES AFTER FINISHING



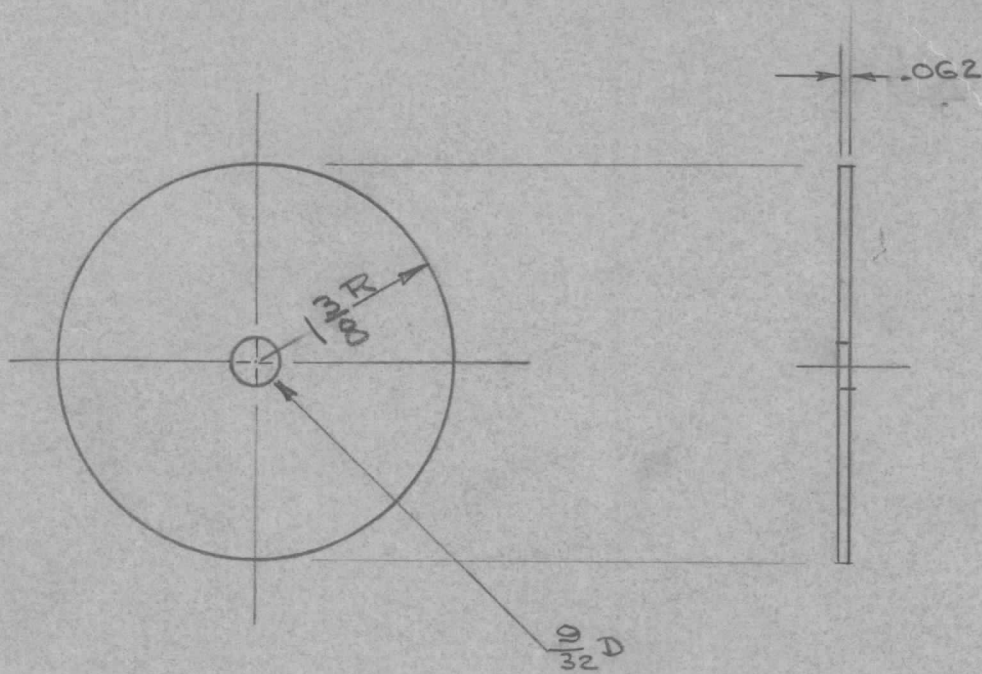
- A - 9/64 (.140) DIA. 4 HOLES REQ.
- B - #9 DRILL (.196 D) 1 HOLE REQ.
- C - .161 ^{+0.003} _{-.000} DIA. 2 HOLES REQ.



REF. LD 472

							2	1	NT129-0440-4	NUT, ROUND SWAGE TYPE				
							REQ.	ITEM	PART NO.	DESCRIPTION	SYMBOL			
										.064	THE TECHNICAL MATERIEL CORP.			
										STOCK SIZE	MAMARONECK, NEW YORK			
										ALUMINUM	BRACKET, COIL SUPPORT			
										MATERIAL				
ISSUE	ITEM	CHANGED FROM	DATE	CH. NO.	DRAFTS	CHECKER	ENG. APP.	5052-H-32		J.C. BIELE				
TOLERANCES							SCALE:							
DEC. DIM. ±							MAXIMUM ALLOWABLE TOLERANCES HAVE BEEN DETERMINED AND ANY DEVIATIONS WILL BE CAUSE FOR REJECTION. REMOVE ALL BURRS AND SHARP EDGES							
FRAC. DIM. ± 1/64														
ANGULAR DIM. ±														
							TYPE & TEMPER		HEATTREAT. SPEC.	DRAWN	CHECKED	FINAL APPROVAL		
							S404-YEL IRIDITE					MS-1419 B		
							FINISH & SPEC. NO.		ELEC. DES. APP	MECH. DES. APP				

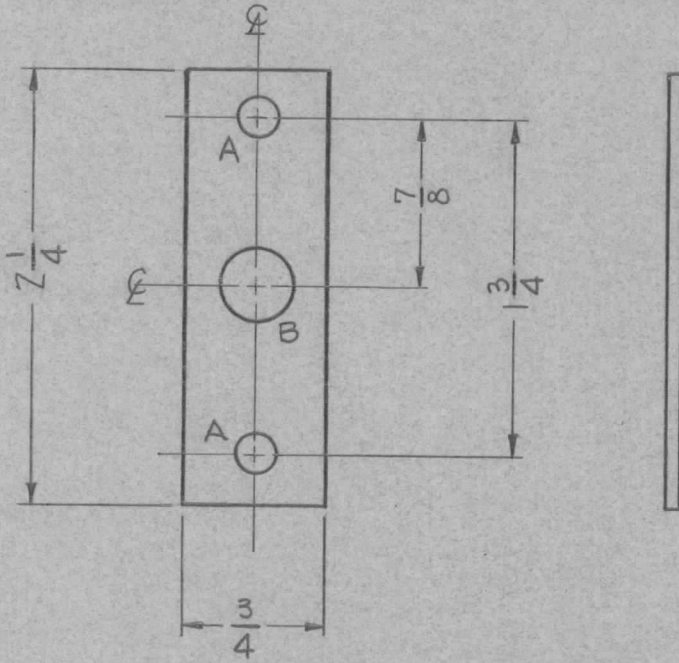
REQ. PER UNIT	USED ON			MS-1427	A
	MODEL	ASS'Y. NO.	DATE		
1	RTF-2	P/A A-1603			



REF: 1

ISSUE	ITEM	CHANGED FROM	DATE	CH. NO.	DRAFTS	CHECKER	ENG. APP.	REQ.	ITEM	PART NO.	DESCRIPTION	SYMBOL				
										.062	THE TECHNICAL MATERIEL CORP. MAMARONECK, NEW YORK	PLATE, LOCKING 360°				
										STOCK SIZE						
										BRASS						
										MATERIAL						
										1/2 HARD						
TOLERANCES			SCALE:													
DEC. DIM. ±			MAXIMUM ALLOWABLE TOLERANCES HAVE BEEN DETERMINED AND ANY DEVIATIONS WILL BE CAUSE FOR REJECTION: REMOVE ALL BURRS AND SHARP EDGES													
FRAC. DIM. ±																
ANGULAR DIM. ±																
								FINISH & SPEC. NO.		ELEC. DES. APP	MECH. DES. APP	MS-1427	A			

REQ. PER UNIT	USED ON			MS-1429	A
	MODEL	ASS'Y. NO.	DATE		
1	GPT-19000	IPA.	12-15-58		



A - 13/64 (.203) DIA.
 B - 3/8 (.375) DIA.

2 REQ'D
 1 REQ'D.

REQ.	ITEM	PART NO.	DESCRIPTION				SYMBOL
		.081	THE TECHNICAL MATERIEL CORP.				
		STOCK SIZE	MAMARONECK, NEW YORK				
A	1	ALUMINUM	BRACKET, ROTOR MTG				
ISSUE	ITEM	CHANGED FROM	DATE	CH. NO.	DRAFTS	CHECKER	ENG. APP.
		S404-YEL-IRIDITE WAS S101 CAUSTIC D IP	12-8-59	1001	1	EMN	
TOLERANCES			SCALE:				
DEC. DIM. ±			MAXIMUM ALLOWABLE TOLERANCES HAVE BEEN DETERMINED AND ANY DEVIATIONS WILL BE CAUSE FOR REJECTION:				
FRAC. DIM. ± 1/64			REMOVE ALL BURRS AND SHARP EDGES				
ANGULAR DIM. ±							
FINISH & SPEC. NO.		5052-H32	DRAWN		CHECKED		FINAL APPROVAL
ELEC. DES. APP		MECH. DES. APP		MS-1429 A			

UNLESS OTHERWISE SPECIFIED
DIMENSIONS ARE IN INCHES AND INCLUDE
CHEMICALLY APPLIED OR PLATED FINISHES

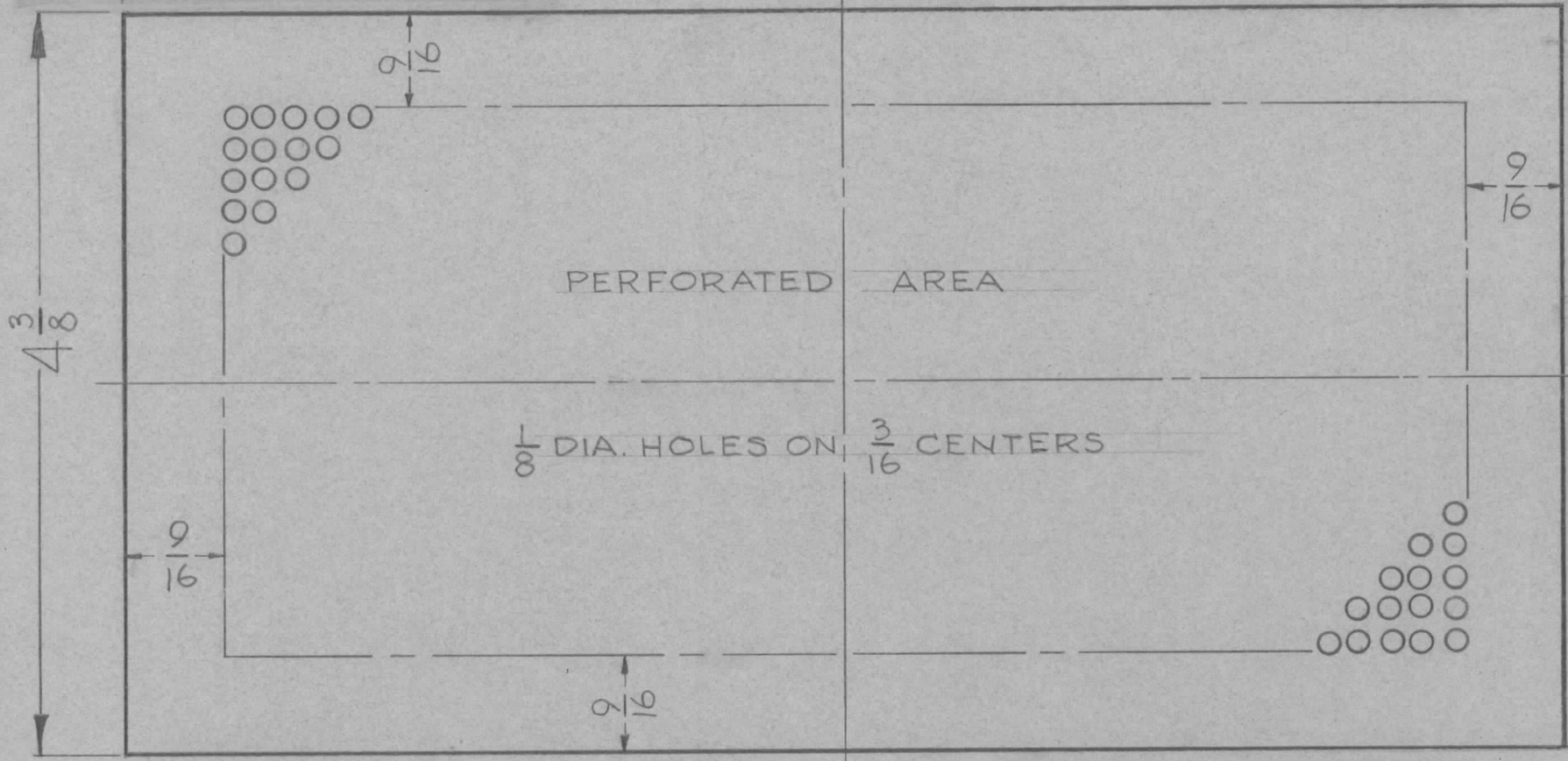
DECIMALS	TOLERANCES	FRACTIONS
.X ± .05		± 1/64
.XX ± .01		ANGLES ± 0° 30'
.XXX ± .005		

CUT HERE
GUARANTEED
2-66

8 1/2

REQ. PER UNIT	USED ON		
	MODEL	ASS'Y. NO.	DATE
2	GPT-10,000	IPA	12-16-58

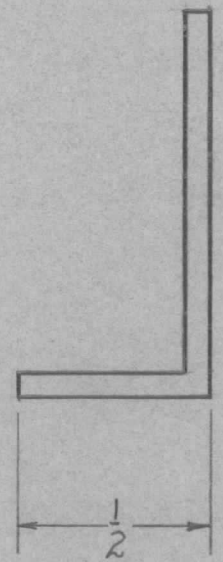
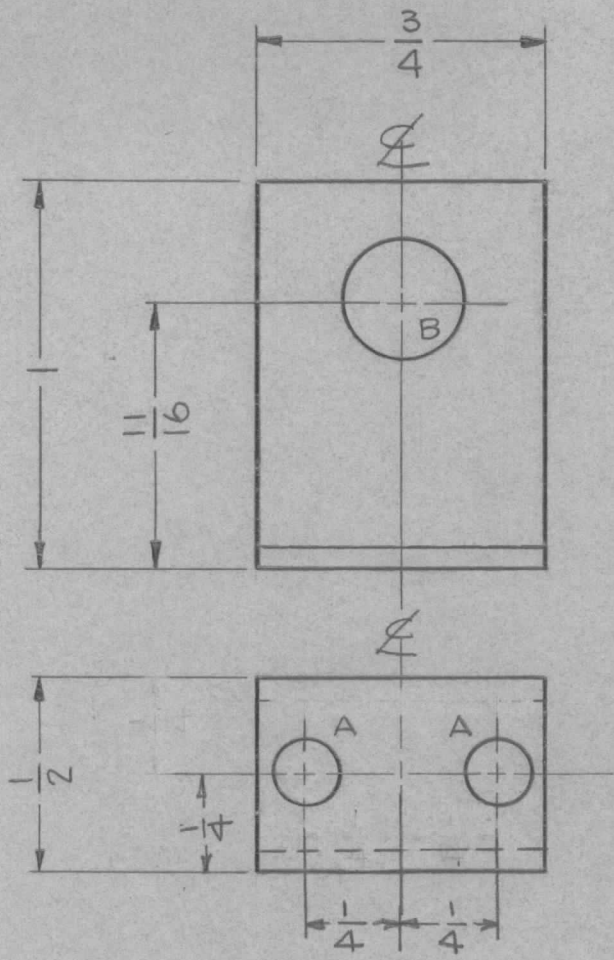
MS-1430



REF TMC# MS-1414

REQ.	ITEM	PART NO.	DESCRIPTION		SYMBOL						
		.064	THE TECHNICAL MATERIEL CORP.								
		STOCK SIZE	MAMARONECK, NEW YORK								
		ALUMINUM	BLANK LAYOUT, SIDE VENT								
		MATERIAL									
ISSUE	ITEM	CHANGED FROM	DATE	CH. NO.	DRAFTS	CHECKER	ENG. APP.				
TOLERANCES			SCALE:			5052-H32	J.C.B.	JHE	AMB		
DEC. DIM. ±			MAXIMUM ALLOWABLE TOLERANCES HAVE BEEN DETERMINED AND ANY DEVIATIONS WILL BE CAUSE FOR REJECTION: REMOVE ALL BURRS AND SHARP EDGES			TYPE & TEMPER	HEATTREAT. SPEC.	DRAWN	CHECKED	FINAL APPROVAL	
FRAC. DIM. ±											
ANGULAR DIM. ±											
						FINISH & SPEC. NO.	ELEC. DES. APP	MECH. DES. APP	MS-1430		

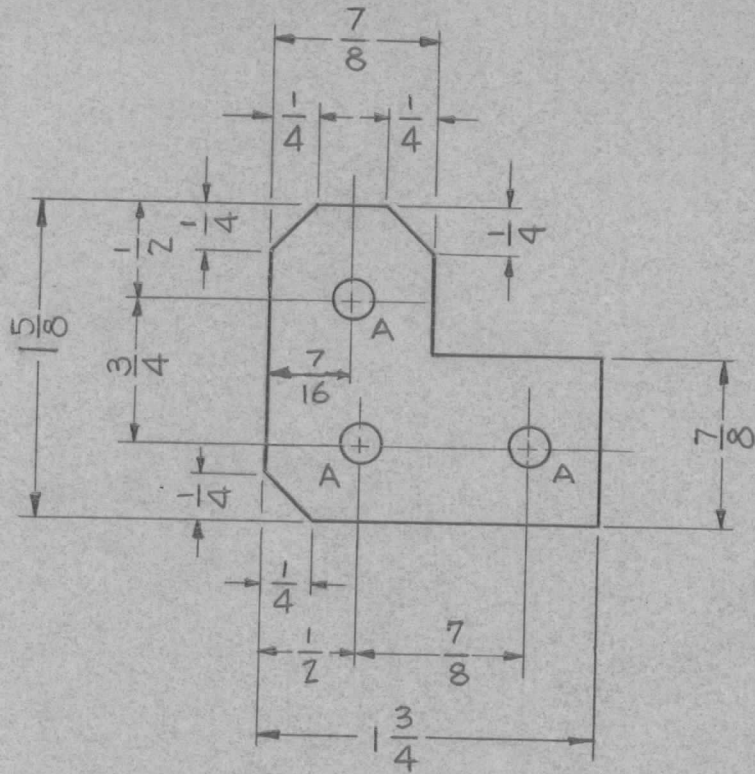
REQ. PER UNIT	USED ON			MS-1431	A
	MODEL	ASS'Y. NO.	DATE		
1	GPT-10,000	IPA	12-10-58		



A - 11/64 (.171) DIA. Z REQ'D.
 B - 5/16 (.312) DIA. FOR 1 REQ'D.
 NYLON BUSHING.

REQ.	ITEM	PART NO.	DESCRIPTION				SYMBOL
		.064	THE TECHNICAL MATERIEL CORP.				
		STOCK SIZE	MAMARONECK, NEW YORK				
		ALUMINUM	BRACKET, SUPPORT CAP. SHAFT				
		MATERIAL					
A	1	5404-Y-IRIDITE WAS 3101 CAUSTIC DIP	12-8 59	1001	P	EMN	
ISSUE	ITEM	CHANGED FROM	DATE	CH. NO.	DRAFTS	CHECKER	ENG. APP.
TOLERANCES			SCALE: <i>to</i>				
DEC. DIM. ± FRAC. DIM. ± 1/64 ANGULAR DIM. ±			MAXIMUM ALLOWABLE TOLERANCES HAVE BEEN DETERMINED AND ANY DEVIATIONS WILL BE CAUSE FOR REJECTION: REMOVE ALL BURRS AND SHARP EDGES				
		5052-H32			J.C. BIELE	<i>[Signature]</i>	<i>[Signature]</i>
		TYPE & TEMPER	HEAT TREAT. SPEC.	DRAWN		CHECKED	FINAL APPROVAL
		5404-YEL-IRIDITE			<i>[Signature]</i>	<i>[Signature]</i>	MS-1431 A
		FINISH & SPEC. NO.	ELEC. DES. APP		MECH. DES. APP		

REQ. PER UNIT	USED ON			MS-1432 A
	MODEL	ASS'Y. NO.	DATE	
1	GPT-10,000	IPA	12-9-58	



A-13/64 (.203) D 3 REQ.

REQ.	ITEM	PART NO.	DESCRIPTION			SYMBOL
		.081	THE TECHNICAL MATERIEL CORP.			
		STOCK SIZE	MAMARONECK, NEW YORK			
A	1	ALUMINUM	BRACKET, CAP MTG.			
		MATERIAL				
		5052-H32	J.C. BIELE	<i>[Signature]</i>	<i>[Signature]</i>	
		TYPE & TEMPER	HEAT TREAT. SPEC.	DRAWN	CHECKED	FINAL APPROVAL
		5404 YEL-IRIDITE				
		FINISH & SPEC. NO.	ELEC. DES. APP	MECH. DES. APP		
						MS-1432 A

ISSUE ITEM CHANGED FROM DATE CH. NO. DRAFTS CHECKER ENG. APP.

A 1 5404-YEL-IRIDITE WAS 12-8-59 1001 P EMN

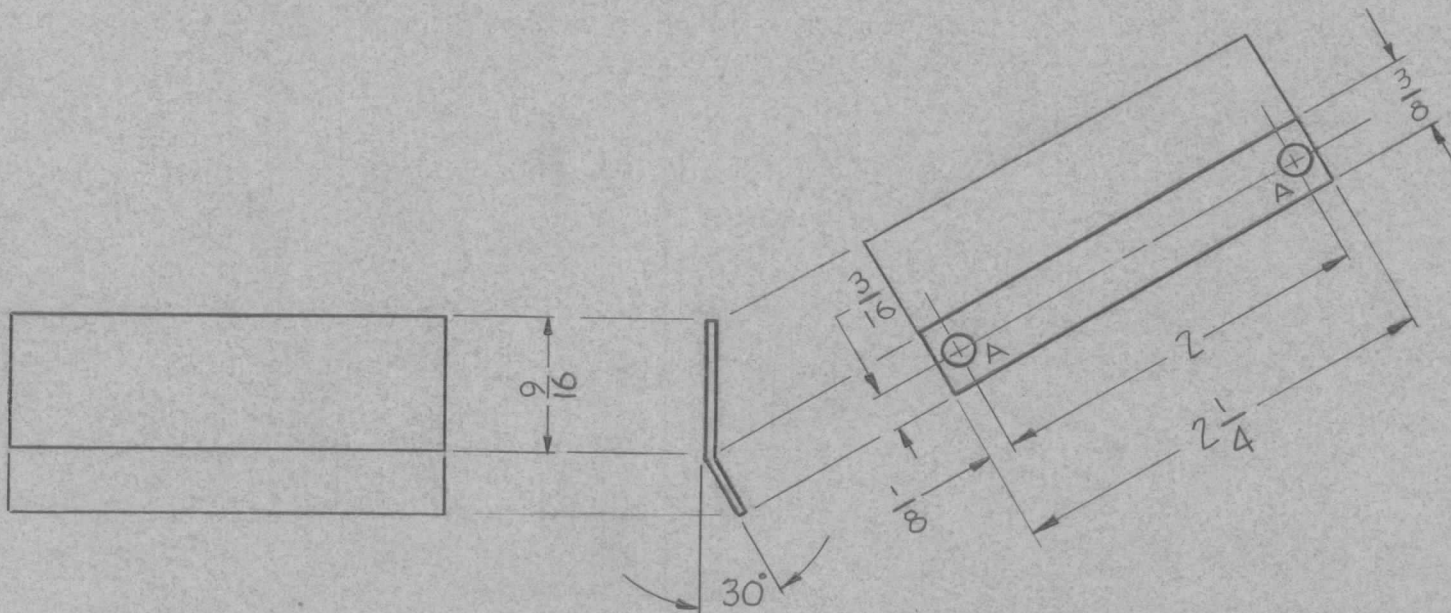
TOLERANCES: DEC. DIM. ±, FRAC. DIM. ± 1/64, ANGULAR DIM. ±

SCALE: MAXIMUM ALLOWABLE TOLERANCES HAVE BEEN DETERMINED AND ANY DEVIATIONS WILL BE CAUSE FOR REJECTION. REMOVE ALL BURRS AND SHARP EDGES

REQ. PER UNIT	USED ON			MS-1433	A
	MODEL	ASS'Y. NO.	DATE		
1	GPT-10,000	IPA	12-10-58		

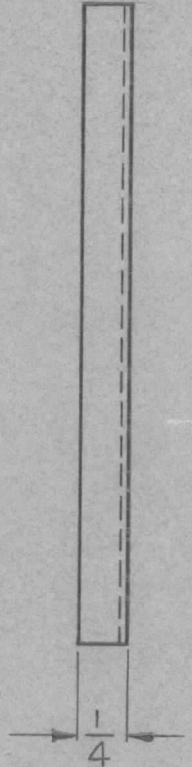
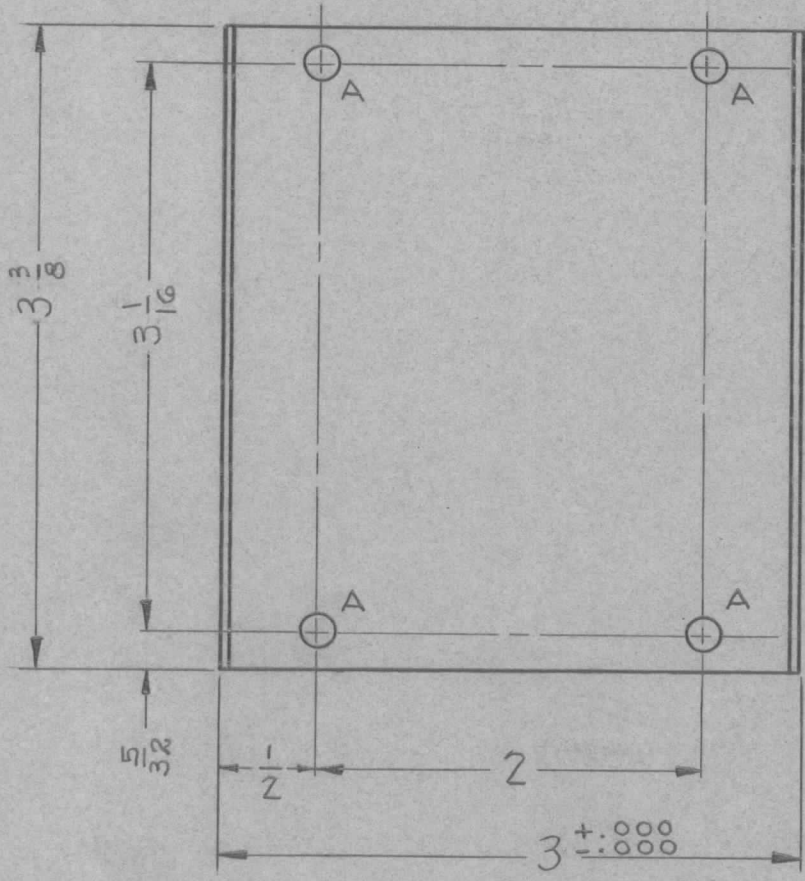
A ~ 11/64 (.171) DIA.

2 REQ'D.



REQ.	ITEM	PART NO.	DESCRIPTION				SYMBOL
		.051	THE TECHNICAL MATERIEL CORP.				
		STOCK SIZE	MAMARONECK, NEW YORK				
A	1	ALUMINUM	DUCT VANE				
ISSUE	ITEM	CHANGED FROM	DATE	CH. NO.	DRAFTS	CHECKER	ENG. APP.
			12-8	1001	P		EMN
TOLERANCES			SCALE:				
DEC. DIM. ±			MAXIMUM ALLOWABLE TOLERANCES HAVE BEEN DETERMINED AND ANY DEVIATIONS WILL BE CAUSE FOR REJECTION.				
FRAC. DIM. ± 1/64			REMOVE ALL BURRS AND SHARP EDGES				
ANGULAR DIM. ±							
5052-H32		J.C. BIELE		APB			
TYPE & TEMPER		HEAT TREAT. SPEC.		DRAWN		CHECKED	
5404-YEL-IRID IFE				APB		MS-1433 A	
FINISH & SPEC. NO.		ELEC. DES. APP		MECH. DES. APP			

REQ. PER UNIT	USED ON			MS-1434	A
	MODEL	ASS'Y. NO.	DATE		
1	GPT-10,000	IPA	12-10-58		



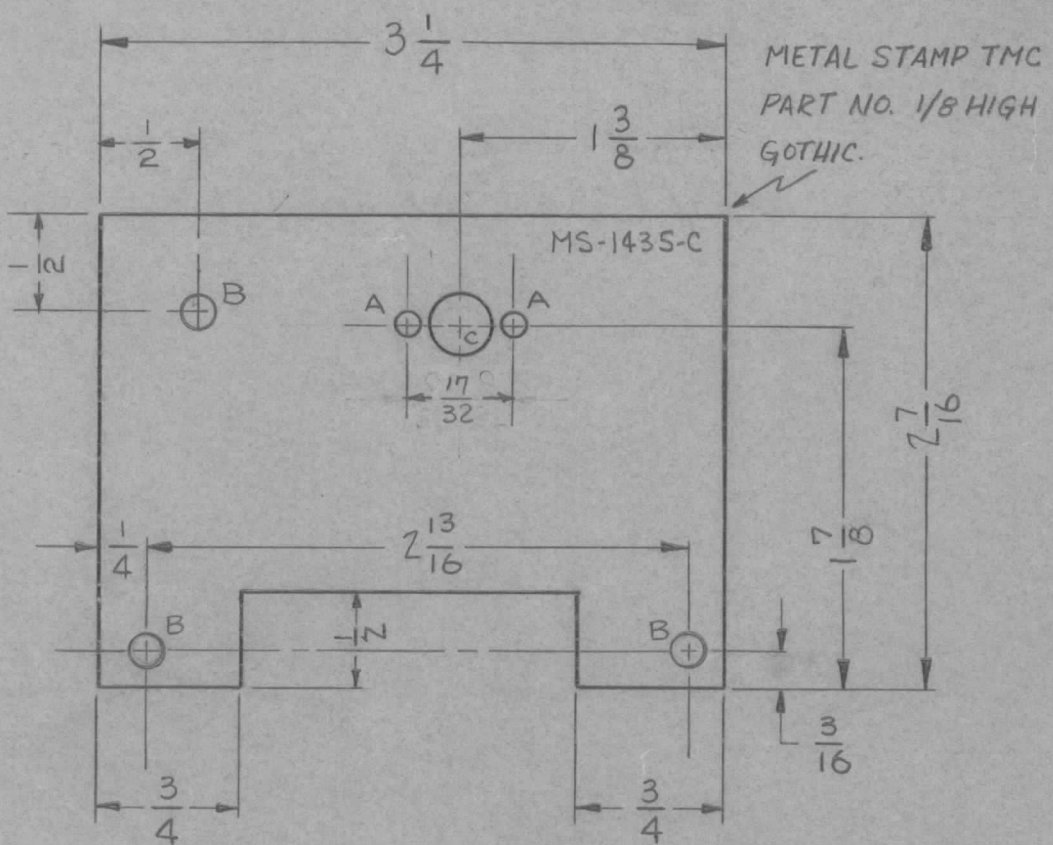
A - 11/64 DIA.

4 REQ'D.

REQ.	ITEM	PART NO.	DESCRIPTION				SYMBOL
		.040	THE TECHNICAL MATERIEL CORP.				
		STOCK SIZE	MAMARONECK, NEW YORK				
A	1	ALUMINUM	COVER, BLOWER DUCT				
		MATERIAL					
ISSUE	ITEM	CHANGED FROM	DATE	CH. NO.	DRAFTS	CHECKER	ENG. APP.
		5404 Y-IRIDITE WAS S101 CAUSTIC DIP	12-8 59	1001	P		EMN
TOLERANCES			SCALE:				
DEC. DIM. \pm			MAXIMUM ALLOWABLE TOLERANCES HAVE BEEN DETERMINED AND ANY DEVIATIONS WILL BE CAUSE FOR REJECTION: REMOVE ALL BURRS AND SHARP EDGES				
FRAC. DIM. \pm $\frac{1}{64}$							
ANGULAR DIM. \pm							
5052-H32		J.C. BIELE	DRAWN		CHECKED		FINAL APPROVAL
5404-Y-EL IRIDITE							MS-1434 A
FINISH & SPEC. NO.		ELEC. DES. APP	MECH. DES. APP				

REQ. PER UNIT	USED ON		
	MODEL	ASS'Y. NO.	DATE
1	RFB-1	GPT-10K	12-10-58
1	RFD-1	PAL-1K	6-23-59
	RFC-1		11-22-60

MS-1435 C



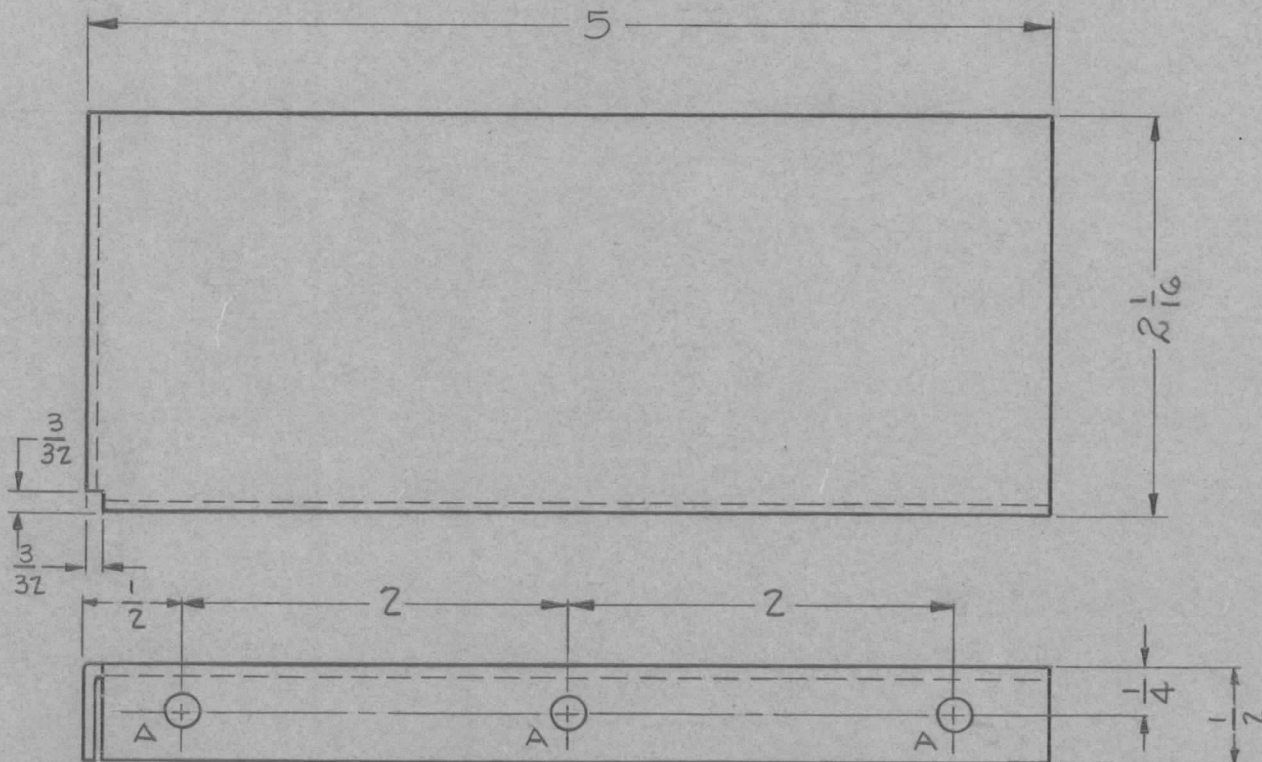
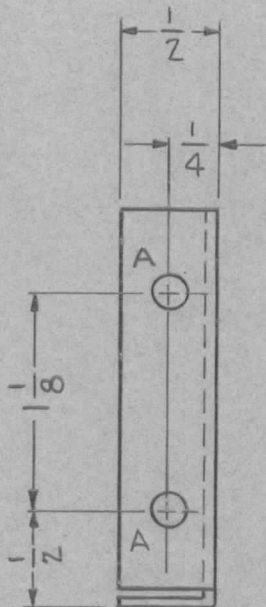
- A - 1/8 (.125) DIA. 2 REQ'D.
- B - 11/64 (.171) DIA. 3 REQ'D.
- C - 5/16 (.312) DIA. 1 REQ'D.

ISSUE	ITEM	CHANGED FROM	DATE	CH. NO.	DRAFTS	CHECKER	ENG. APP.	REQ. ITEM	PART NO.	DESCRIPTION	SYMBOL	
C	1	1 1/32 DIM WAS 9/16	10-12-62	7426						THE TECHNICAL MATERIEL CORP. MAMARONECK, NEW YORK BRACKET, TRIMMER	C	
B	1	(1)" B HOLE ADDED	5-18-60	2287					.064			
A	1	FINISH WAS 3101, 3109	6/23/59						ALUMINUM			
TOLERANCES								MATERIAL				
DEC. DIM. ±								5052-H32		J.C. BIELE		
FRAC. DIM. ± 1/64								TYPE & TEMPER		DRAWN	CHECKED	FINAL APPROVAL
ANGULAR DIM. ±								S404 IRIDITE				
SCALE:								HEAT TREAT. SPEC.		ELEC. DES. APP	MECH. DES. APP	
MAXIMUM ALLOWABLE TOLERANCES HAVE BEEN DETERMINED AND ANY DEVIATIONS WILL BE CAUSE FOR REJECTION: REMOVE ALL BURRS AND SHARP EDGES								FINISH & SPEC. NO.				MS-1435 C

REQ. PER UNIT	USED ON			MS-1436	A
	MODEL	ASS'Y. NO.	DATE		
1	GPT-10,000	IPA	12-11-58		

A ~ 11/64 (.171) DIA.

5 REQ'D.



REQ.	ITEM	PART NO.	DESCRIPTION			SYMBOL	
		.064	THE TECHNICAL MATERIEL CORP.				
		STOCK SIZE	MAMARONECK, NEW YORK				
A	1	5404-YEL-IRIDITE WAS S101-CAUSTIC DIP	SHIELD				
ISSUE	ITEM	CHANGED FROM	DATE	CH. NO.	DRAFTS	CHECKER	ENG. APP.
			12-8 59	1001	P		EMM
TOLERANCES			SCALE:				
DEC. DIM. ±			MAXIMUM ALLOWABLE TOLERANCES HAVE BEEN DETERMINED AND ANY DEVIATIONS WILL BE CAUSE FOR REJECTION.				
FRAC. DIM. ± 1/64			REMOVE ALL BURRS AND SHARP EDGES				
ANGULAR DIM. ±							
5052-H32		J.C. BIELE		fde		APB	
TYPE & TEMPER		HEAT TREAT. SPEC.		DRAWN		CHECKED	
5404-YEL IRIDITE							
FINISH & SPEC. NO.		ELEC. DES. APP		MECH. DES. APP		MS-1436 A	

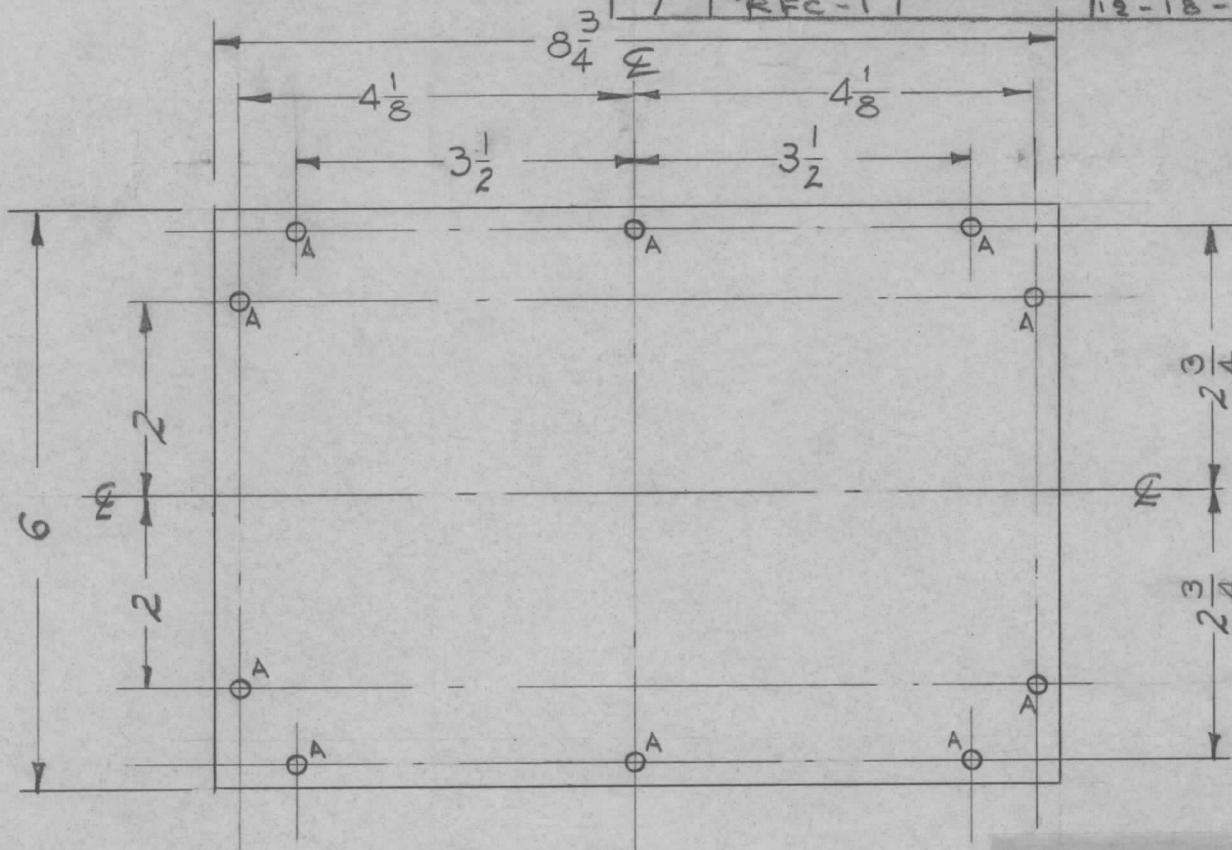
A- 1/64 (.171)

10 REQ'D.

REQ. PER. UNIT	USED ON		
	MODEL	ASS'Y. NO.	DATE
1	RFB-1	GPT-10K	
1	RFD-1	PAL-1K	6-23-59
1	RFC-1		12-18-60

MS-1439

D



UNLESS OTHERWISE SPECIFIED
DIMENSIONS ARE IN INCHES AND INCLUDE
CHEMICALLY APPLIED OR PLATED FINISHES

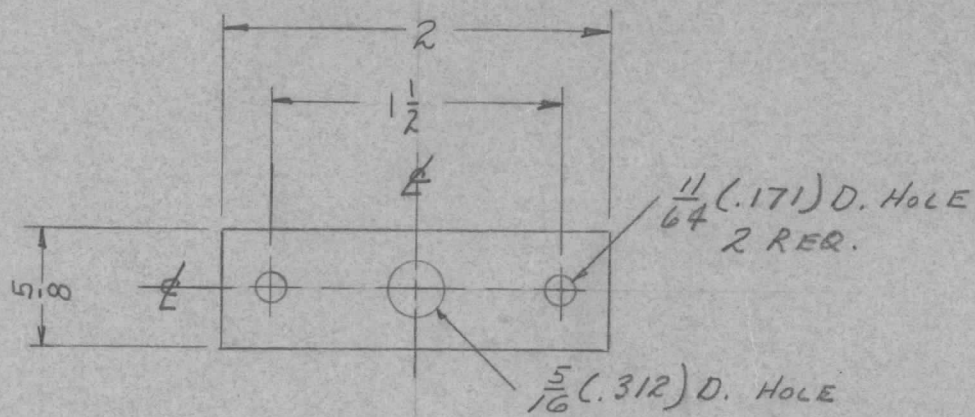
DECIMALS .X ± .05 .XX ± .01 .XXX ± .005	TOLERANCES	FRACTIONS ± 1/64 ANGLES ± 0° 30'
--	------------	---

CUT HERE
GUARANTEED
2-66

REF.-LD-1063(1)

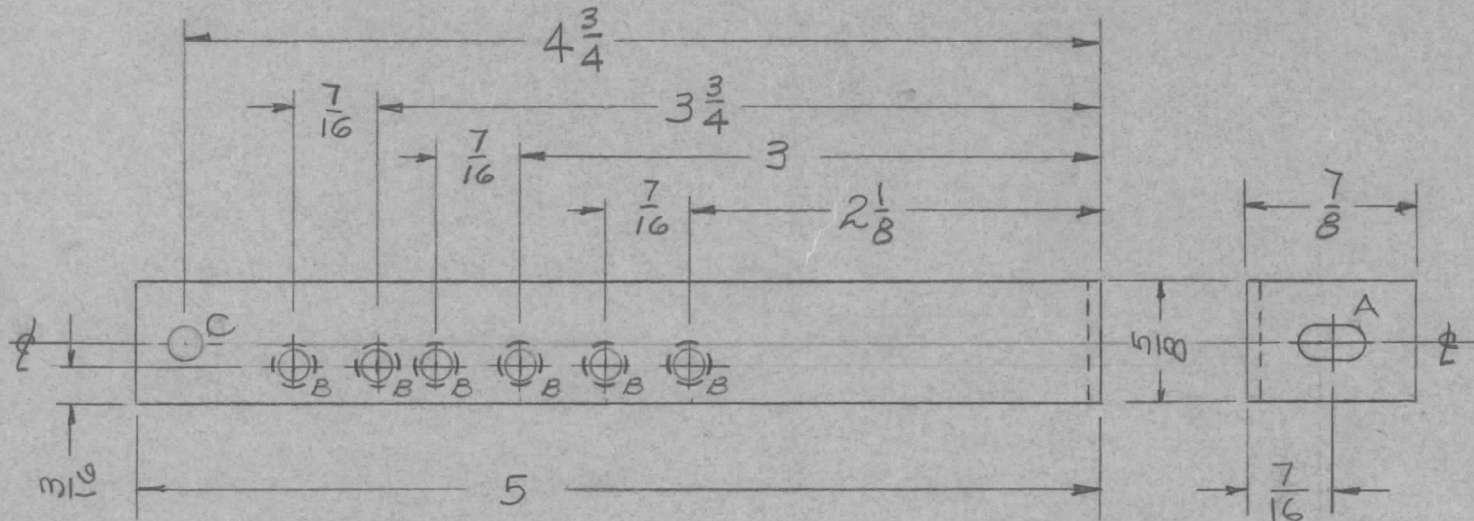
ISSUE	ITEM	CHANGED FROM	DATE	CH. NO.	DRAFTS	CHECKER	ENG. APP.	REQ.	ITEM	PART NO.	DESCRIPTION	SYMBOL
D	1	Dim 2 3/4 WAS 2 5/8 (right side 2 PLACES)	12-19-60	3761	RU.	file	[Signature]				THE TECHNICAL MATERIEL CORP. MAMARONECK, NEW YORK TUBE CHASSIS COVER GPT 10KW IPA TORILLO [Signature]	D
C	1	DIM 2 5/8 WAS 2 3/4 (2 PLACES)	10/11/60	3202	RH	file	[Signature]		.051	STOCK SIZE		
B	1	Dim 4 1/8 TAKEN FROM E	12-1-59	1626	JDM	16	[Signature]		ALUMINUM	MATERIAL		
A	1	COMPLETELY REVISED	6/9/59	—	file	[Signature]	[Signature]		5052-H32	TYPE & TEMPER		
									S404-IRIDITE	HEAT TREAT. SPEC.		
TOLERANCES		SCALE:		5052-H32		DRAWN		CHECKED		FINAL APPROVAL		
DEC. DIM. ±		MAXIMUM ALLOWABLE TOLERANCES HAVE BEEN DETERMINED AND ANY DEVIATIONS WILL BE CAUSE FOR REJECTION.		ELEC. DES. APP		MECH. DES. APP		MS-1439				
FRAC. DIM. ±		REMOVE ALL BURRS AND SHARP EDGES										
ANGULAR DIM. ±												

REQ. PER UNIT	USED ON			MS-1443	A
	MODEL	ASS'Y. NO.	DATE		
1	RTF-2	P/A	12-22-58		



REQ.	ITEM	PART NO.	DESCRIPTION				SYMBOL
			1/8 THICK STOCK SIZE				THE TECHNICAL MATERIEL CORP. MAMARONECK, NEW YORK
			ALUMINUM				
A	1	S404 IRIDITE WAS S101 CAUSTIC DIP	12-8 59	1001	P	EMN	PLATE, BEARING ADJUST. Pow/AMP
ISSUE	ITEM	CHANGED FROM	DATE	CH. NO.	DRAFTS	CHECKER	ENG. APP.
TOLERANCES			SCALE: FULL SIZE				
DEC. DIM. ± .002			MAXIMUM ALLOWABLE TOLERANCES HAVE BEEN DETERMINED AND ANY DEVIATIONS WILL BE CAUSE FOR REJECTION. REMOVE ALL BURRS AND SHARP EDGES				
FRAC. DIM. ± 1/64							
ANGULAR DIM. ±							
			5052-H32	12/22/58 EM		AKO	CHK
			TYPE & TEMPER	HEAT TREAT. SPEC.	DRAWN	CHECKED	FINAL APPROVAL
			S404-XEL IRIDITE			AMP	MS-1443
			FINISH & SPEC. NO.	ELEC. DES. APP	MECH. DES. APP		A

REQ. PER UNIT	USED ON			MS-1444	C
	MODEL	ASS'Y. NO.	DATE		
1	RTF-2	MULTI	12-22-58		



A - $\frac{11}{32} \times \frac{11}{64}$ SLOT 1 REQ
 B - $.161 \begin{smallmatrix} +.003 \\ -.000 \end{smallmatrix}$ 6 REQ
 C - $\frac{5}{32} (.156 D)$ 1 REQ

NOTE:

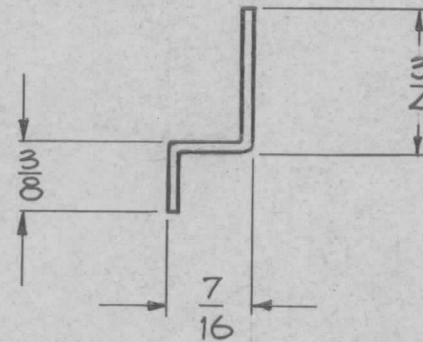
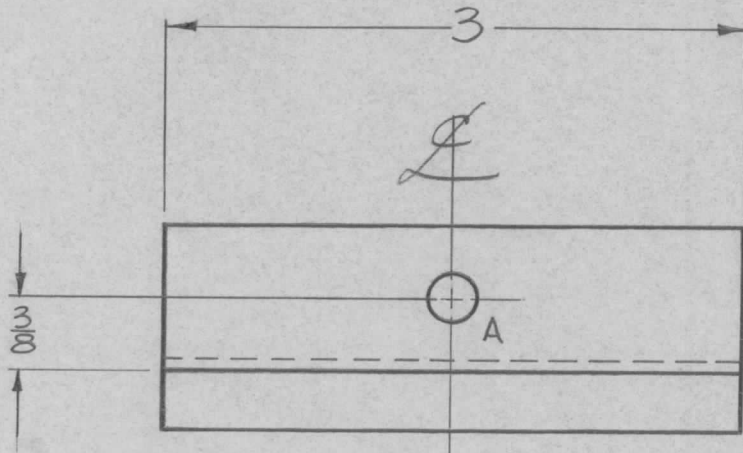
MT. ITEM ONE IN 6 'B' HOLES ON BACK SIDE AFTER IRIDITING.

REF: LD 480

							6	1	NT129-440-4	NUT, ROUND, SWAGE TYPE						
							REQ.	ITEM	PART NO.	DESCRIPTION	SYMBOL					
C		ADD IT. 1	11/16/70	20068	GE	W P.E.A.	.064 THICK			THE TECHNICAL MATERIEL CORP.						
B		C WAS "A" HOLE. "A" HOLE WAS 5/32 D. 7/16 DIM WAS 3/8	11-14-66	17230	WHO	JFB	STOCK SIZE			MAMARONECK, NEW YORK						
A	1	S404-YEL IRIDITE WAS 3101 CAUSTIC DIP	12-8	1001	P	EMN	ALUMINUM			BRACKET, TRIMMER MOUNTING						
ISSUE ITEM CHANGED FROM							MATERIAL									
TOLERANCES							SCALE: FULL SIZE			5052-H32	12/2/58	ave	JFB	JFB		
DEC. DIM. ±							TYPE & TEMPER			HEATTREAT. SPEC.	DRAWN	CHECKED	FINAL APPROVAL			
FRAC. DIM. ± 1/64							S404-YEL IRIDITE						MS-1444 C			
ANGULAR DIM. ±							FINISH & SPEC. NO.			ELEC. DES. APP	MECH. DES. APP					
MAXIMUM ALLOWABLE TOLERANCES HAVE BEEN DETERMINED AND ANY DEVIATIONS WILL BE CAUSE FOR REJECTION. REMOVE ALL BURRS AND SHARP EDGES																

REQ. PER. UNIT	USED ON			MS-1451	A
	MODEL	ASS'Y. NO.	DATE		
1	5052-H-32	1 PA	5-18-59		

A ~ 1/4 (.250) DIA ~ 1 Req.

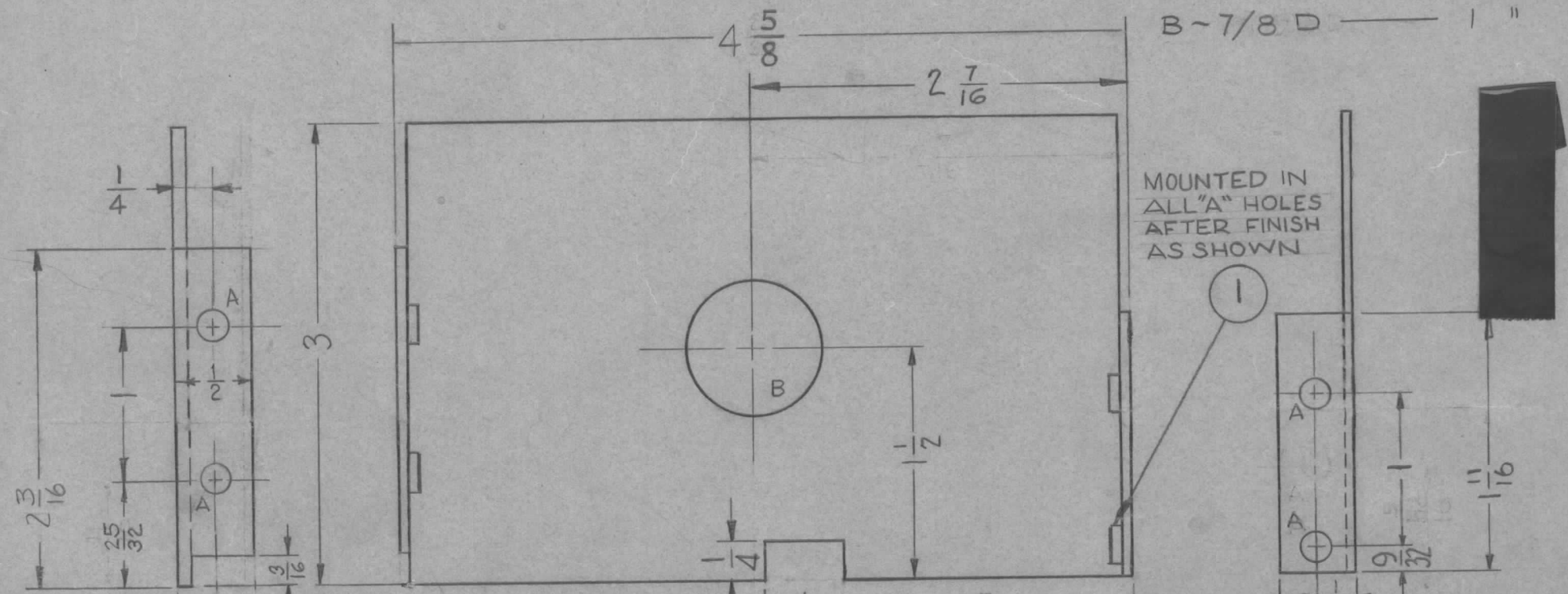


ISSUE	ITEM	CHANGED FROM	DATE	CH. NO.	DRAFTS	CHECKER	ENG. APP.	REQ. ITEM	PART NO.	DESCRIPTION	SYMBOL				
								.051		THE TECHNICAL MATERIEL CORP.					
								STOCK SIZE		MAMARONECK, NEW YORK					
A	1	Revised & Redrawn	5-18-59	1004	J.C.B.	<i>J.C.B.</i>	<i>Alm</i>	ALUMINUM		BRACKET, FILTER					
								MATERIAL		RETAINING					
TOLERANCES			SCALE:					5052-H-32		J.C. Biele	<i>J.C.B.</i>	<i>Alm</i>			
DEC. DIM. ±			MAXIMUM ALLOWABLE TOLERANCES HAVE BEEN DETERMINED AND ANY DEVIATIONS WILL BE CAUSE FOR REJECTION. REMOVE ALL BURRS AND SHARP EDGES					TYPE & TEMPER	HEATTREAT. SPEC.	DRAWN	CHECKED	FINAL APPROVAL			
FRAC. DIM. ± 1/64								S-404 - Inidite			<i>Alm</i>				MS-1451
ANGULAR DIM. ±								FINISH & SPEC. NO.		ELEC. DES. APP	MECH. DES. APP				A

REQ. PER UNIT	USED ON		
	MODEL	ASS'Y. NO.	DATE
1	RFB-1	GPT-10K	12-10-58
1	RFD-1	PAL-1K	6-23-59
	RFC-1		11-22-60

MS-1452 G

G 1 DIMENSION $\frac{1}{2}$ RELOCATED 7-7-61 5194 G.D.L. *JCB* 16



A-.191-.194 — 4REQ.
B-7/8 D — 1"

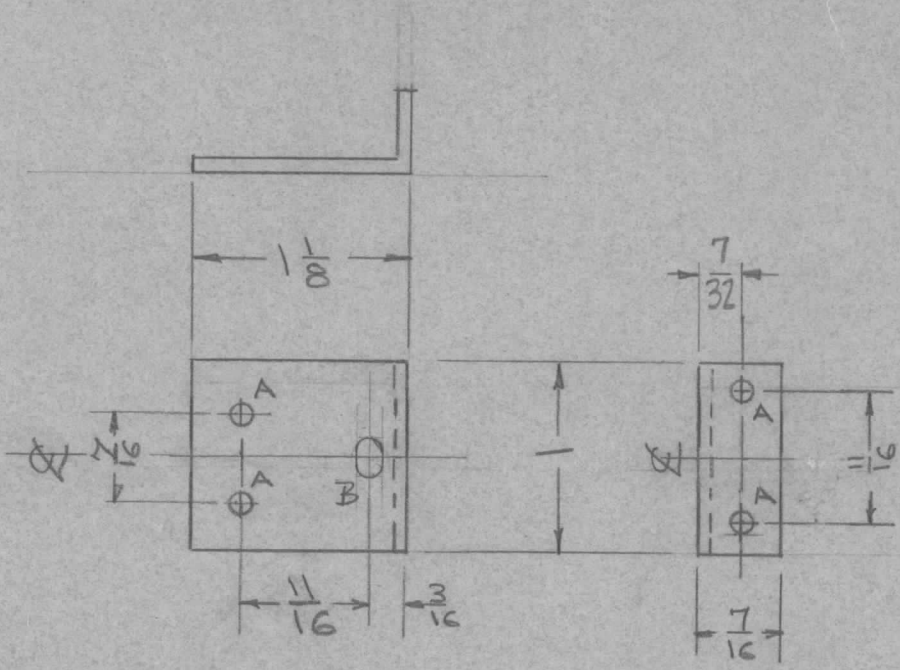
F	3	(2) "A" HOLES & (2) NT-129'S ADDED	5/19/61	4942	<i>DM</i>	<i>JCB</i>	<i>DB</i>
	2	1/4 X 1/2" NOTCH ADDED					
	1	LIPS EXTENDED & DIM'S CHANGED					
E	1	O/A DIM. 4 5/8 WAS 4 23/32	2-8-61	4058	<i>MAF</i>	<i>JCB</i>	<i>RL</i>
D	3	(A) HOLES WERE 3/16 D HOLES	12/20/60	3756	<i>RU</i>	<i>JCB</i>	<i>DB</i>
	2	Left LIP REVERSED, & NOTCH ADDED					
	1	DIM 5/32 WAS 9/32, 25/32 WAS 1/16 (LIP)					
C		RELOCATE (1) "A" HOLE	5-17-60	2288	<i>CU</i>	<i>JCB</i>	<i>DM</i>
B	1	DIM 4 23/32 WAS 4 3/4	12-1-59	1625	<i>DM</i>	<i>JCB</i>	<i>DB</i>
A	1	FINISH WAS S101 & S107	6/23/59		<i>JCB</i>	<i>JCB</i>	<i>DB</i>
ISSUE	ITEM	CHANGED FROM	DATE	CH. NO.	DRAFTS	CHECKER	ENG. APP.
TOLERANCES			SCALE: FULL SIZE				
DEC. DIM. ±			MAXIMUM ALLOWABLE TOLERANCES HAVE BEEN DETERMINED AND ANY DEVIATIONS WILL BE CAUSE FOR REJECTION. REMOVE ALL BURRS AND SHARP EDGES				
FRAC. DIM. ± 1/64							
ANGULAR DIM. ±							

REQ.	ITEM	PART NO.	DESCRIPTION	SYMBOL
4	1	NT129-6-32	NUT ROUND, SWAGE TYPE	A
.064			THE TECHNICAL MATERIEL CORP.	
STOCK SIZE			MAMARONECK, NEW YORK	
ALUMINUM			SHIELD, INTERSTAGE	
MATERIAL				
5052-H32			J.C. BIELE	<i>DM</i>
TYPE & TEMPER		HEAT TREAT. SPEC.	DRAWN	CHECKED
5404 IRIDITE			<i>ATB</i>	<i>DM</i>
FINISH & SPEC. NO.		ELEC. DES. APP	MECH. DES. APP	FINAL APPROVAL
				MS-1452 G

REQ. PER UNIT	USED ON		
	MODEL	ASS'Y. NO.	DATE
1	RFB-1	GPT-10K	12/30/58
1	RFD-1	PAL-1K	6-23-59
	RFC-1		11-22-60

MS-1457 C

A - 1/8 D 4 HOLES
 B - 3/16 DIA X 1/4 SLOT - 1 REQ.



ISSUE	ITEM	CHANGED FROM	DATE	CH. NO.	DRAFTS	CHECKER	ENG. APP.	REQ. ITEM	PART NO.	DESCRIPTION	SYMBOL		
C	1	7/32 Dim. added	10/4/60	3139	Dom	WJ	[Signature]			THE TECHNICAL MATERIEL CORP. MAMARONECK, NEW YORK	BRACKET, TRIMMER		
B	1	"B" SLOT WAS 3/16 D.	2-3-60	1836	WF	[Signature]	[Signature]		064				
A	1	FINISH WAS S101, S-107	6/23/59	-	[Signature]	[Signature]	[Signature]		ALUMINUM				
TOLERANCES								MATERIAL		5052-H32			
DEC. DIM. ±			SCALE:					TYPE & TEMPER		HEAT TREAT. SPEC.		DRAWN	
FRAC. DIM. ± 1/64			MAXIMUM ALLOWABLE TOLERANCES HAVE BEEN DETERMINED AND ANY DEVIATIONS WILL BE CAUSE FOR REJECTION. REMOVE ALL BURRS AND SHARP EDGES					S-404-Iridite				CHECKED	
ANGULAR DIM. ±								FINISH & SPEC. NO.		ELEC. DES. APP		MECH. DES. APP	
										MS-1457 C			

UNLESS OTHERWISE SPECIFIED
DIMENSIONS ARE IN INCHES AND INCLUDE
CHEMICALLY APPLIED OR PLATED FINISHES

DECIMALS	FRACTIONS
.X ± .05	± 1/64
.XX ± .01	ANGLES
.XXX ± .005	± 0° 30'

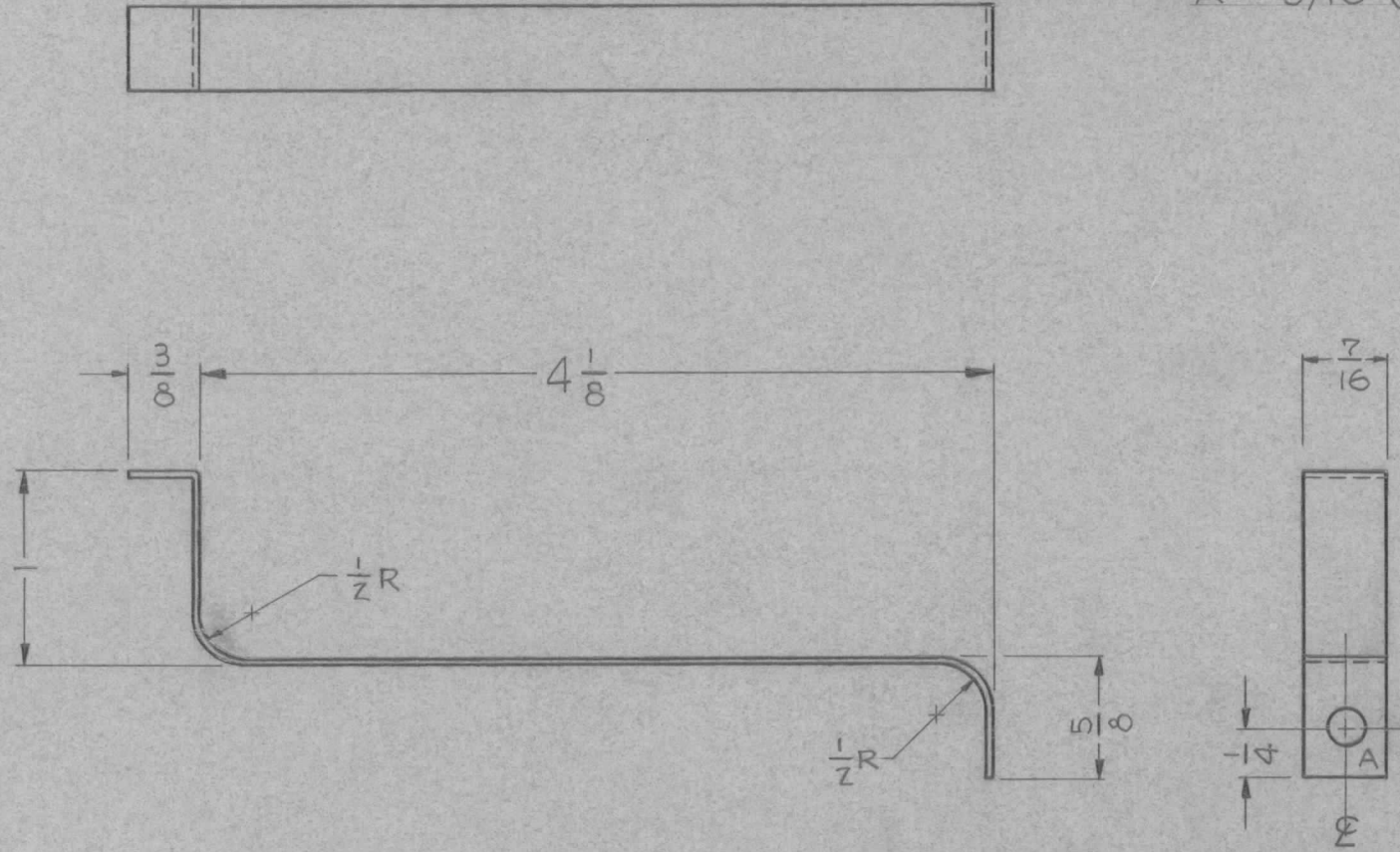
TOLERANCES

CUT HERE
GUARANTEED
2-66

REQ. PER UNIT	USED ON		
	MODEL	ASS'Y. NO.	DATE
1	G.P.T. 10,000	1 PA	1-2-59

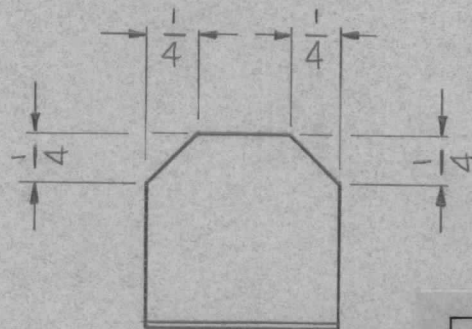
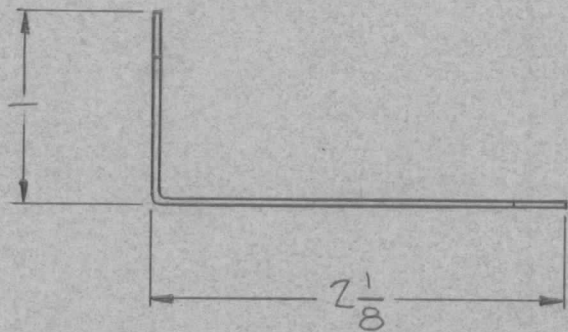
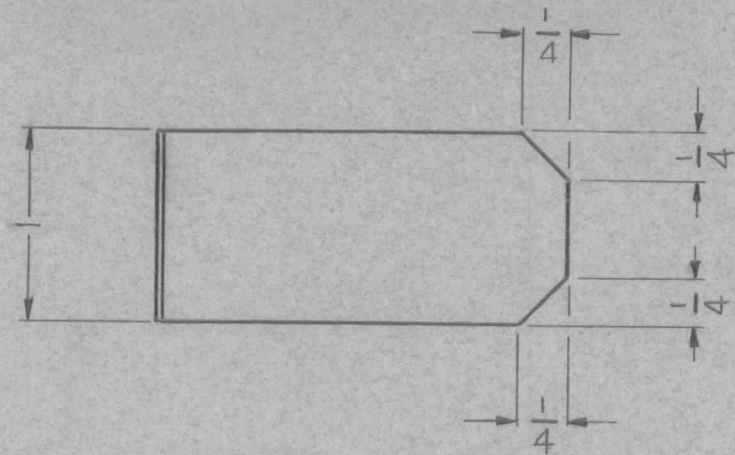
MS-1461

A ~ 3/16 (.187) DIA. 1 REQ



REQ.	ITEM	PART NO.	DESCRIPTION	SYMBOL							
		.025	THE TECHNICAL MATERIEL CORP. MAMARONECK, NEW YORK STRAP, CONN. CAP.								
		STOCK SIZE									
		COMM. SOFT COPPER									
		MATERIAL									
ISSUE	ITEM	CHANGED FROM	DATE	CH. NO.	DRAFTS	CHECKER	ENG. APP.	J.C. BIELE			
TOLERANCES			SCALE:		TYPE & TEMPER		HEATTREAT. SPEC.	DRAWN	CHECKED	FINAL APPROVAL	
DEC. DIM. ±			MAXIMUM ALLOWABLE TOLERANCES HAVE BEEN DETERMINED AND ANY DEVIATIONS WILL BE CAUSE FOR REJECTION. REMOVE ALL BURRS AND SHARP EDGES		SILVER PLATE			ATB	YCB	MS-1461	
FRAC. DIM. ±					.0002		FINISH & SPEC. NO.		ELEC. DES. APP		MECH. DES. APP
ANGULAR DIM. ±											

REQ. PER UNIT	USED ON			MS-1462
	MODEL	ASS'Y. NO.	DATE	
	1	G.P.T. 10,000	I.P.A.	



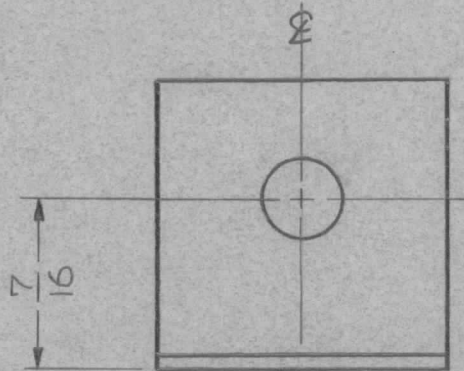
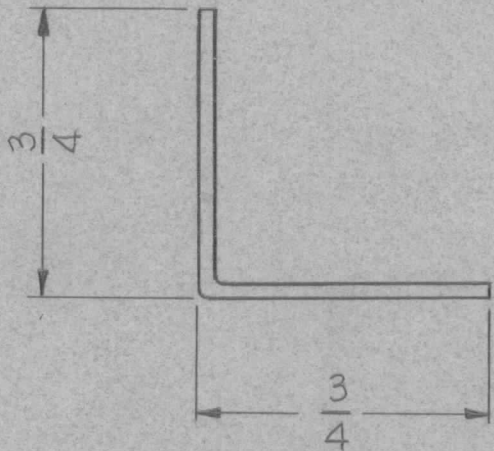
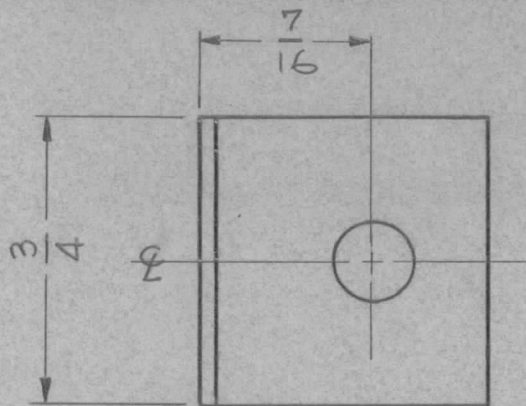
UNLESS OTHERWISE SPECIFIED
DIMENSIONS ARE IN INCHES AND INCLUDE
CHEMICALLY APPLIED OR PLATED FINISHES

DECIMALS	FRACTIONS
.X ± .05	± 1/64
.XX ± .01	ANGLES
.XXX ± .005	± 0° 30'

TOLERANCES

CUT HERE
GUARANTEED
2-66

ISSUE	ITEM	CHANGED FROM	DATE	CH. NO.	DRAFTS	CHECKER	ENG. APP.	REQ. ITEM	PART NO.	DESCRIPTION	SYMBOL	
										THE TECHNICAL MATERIEL CORP. MAMARONECK, NEW YORK STRAP, PLATE CONNECTOR		
									.025			
									STOCK SIZE			
									SOFT COPPER			
									MATERIAL			
										J.C. BIELE		
										<i>Handwritten Signature</i>	<i>Handwritten Signature</i>	
										DRAWN	CHECKED	FINAL APPROVAL
									TYPE & TEMPER	HEAT TREAT. SPEC.		
									SILVER PLATE			
									.0002			
									FINISH & SPEC. NO.	ELEC. DES. APP	MECH. DES. APP	MS-1462



REQ. PER UNIT	USED ON		
	MODEL	ASS'Y. NO.	DATE
3	G.T.P. 10,000	1PA	1-2-59

MS-1464 A

A - 13/64 (.203) DIA.

2 REQ.

UNLESS OTHERWISE SPECIFIED DIMENSIONS ARE IN INCHES AND INCLUDE CHEMICALLY APPLIED OR PLATED FINISHES		
DECIMALS	TOLERANCES	FRACTIONS
.X ± .05		± 1/64
.XX ± .01		ANGLES ± 0° 30'
.XXX ± .005		

CUT HERE
GUARANTEED
2-66

ISSUE	ITEM	CHANGED FROM	DATE	CH. NO.	DRAFTS	CHECKER	ENG. APP.	REQ.	ITEM	PART NO.	DESCRIPTION	SYMBOL	
										.081	THE TECHNICAL MATERIEL CORP. MAMARONECK, NEW YORK BRACKET, CAPACITOR MTG.		
										STOCK SIZE			
										ALUMINUM			
										MATERIAL			
A	1	S404-YEL IRIDITE WAS S101 CAUSTIC DIP	12-8 59	1001	Ⓟ		EMN			505Z-H-3Z	J.C. BIELE	APP	
TOLERANCES			SCALE:										
DEC. DIM. ±			MAXIMUM ALLOWABLE TOLERANCES HAVE BEEN DETERMINED AND ANY DEVIATIONS WILL BE CAUSE FOR REJECTION. REMOVE ALL BURRS AND SHARP EDGES										
FRAC. DIM. ±													
ANGULAR DIM. ±													
										FINISH & SPEC. NO.	ELEC. DES. APP	MECH. DES. APP	
										S404 YEL-IRIDITE	ATB	APP	MS-1464 A

UNLESS OTHERWISE SPECIFIED
DIMENSIONS ARE IN INCHES AND INCLUDE
CHEMICALLY APPLIED OR PLATED FINISHES

DECIMALS
.X ± .05
.XX ± .01
.XXX ± .005

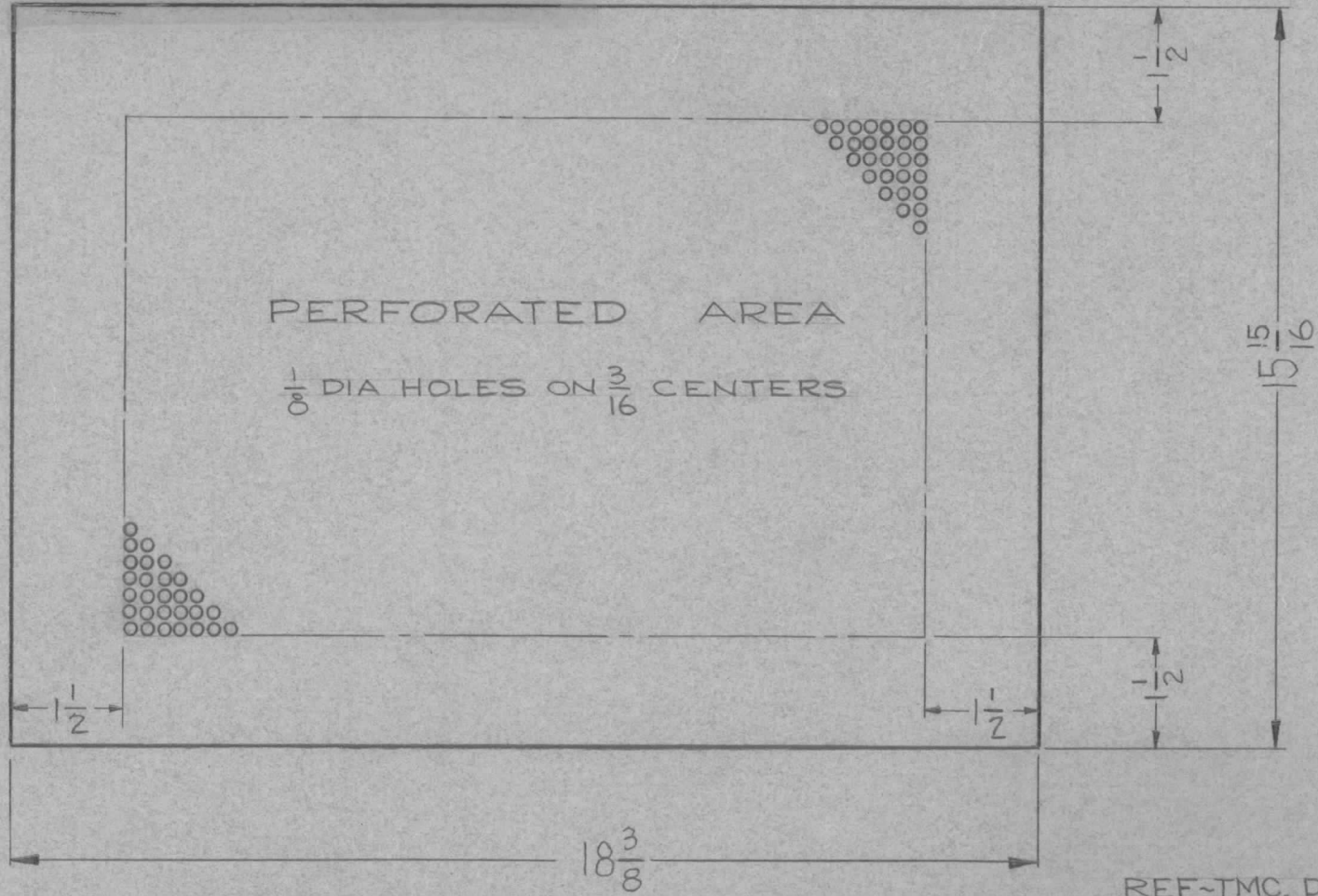
TOLERANCES

FRACTIONS
± 1/64
ANGLES
± 0° 30'

CUT HERE
GUARANTEED
2-66

REQ. PER UNIT	USED ON		
	MODEL	ASS'Y. NO.	DATE
1	SPT-10,000	IPA-	12-31-50

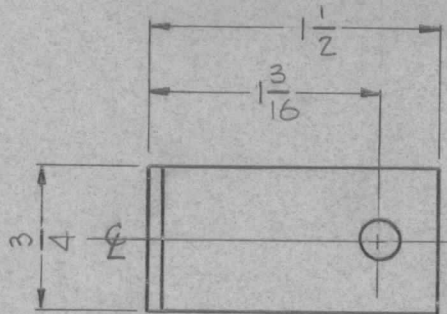
MS-1469



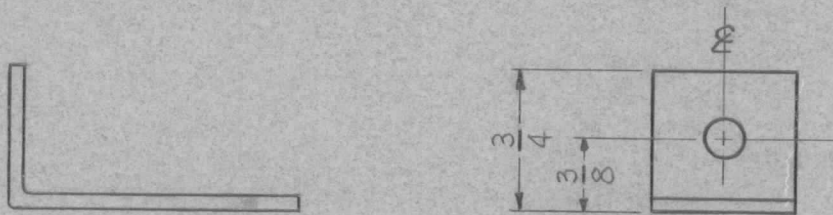
REF-TMC. DWG-MS-1466

REQ.	ITEM	PART NO.	DESCRIPTION	SYMBOL					
		.051	THE TECHNICAL MATERIEL CORP. MAMARONECK, NEW YORK BLANK SIZE, COVER TOP						
		STOCK SIZE							
		ALUMINUM							
		MATERIAL							
ISSUE	ITEM	CHANGED FROM	DATE	CH. NO.	DRAFTS	CHECKER	ENG. APP.		
TOLERANCES			SCALE:						
DEC. DIM. ±			MAXIMUM ALLOWABLE TOLERANCES HAVE BEEN DETERMINED AND ANY DEVIATIONS WILL BE CAUSE FOR REJECTION. REMOVE ALL BURRS AND SHARP EDGES						
FRAC. DIM. ±									
ANGULAR DIM. ±									
		5052-H-32	J.C. BIELE			CMB			
		TYPE & TEMPER	HEAT TREAT. SPEC.	DRAWN	CHECKED	FINAL APPROVAL			
		FINISH & SPEC. NO.	ELEC. DES. APP	MECH. DES. APP	MS-1469				

REQ. PER UNIT	USED ON			MS-1470 A
	MODEL	ASS'Y. NO.	DATE	
1	GPT 10,000	I.P.A.	1-2-59	



A ~ 13/64 (.203) DIA 2 REQ.



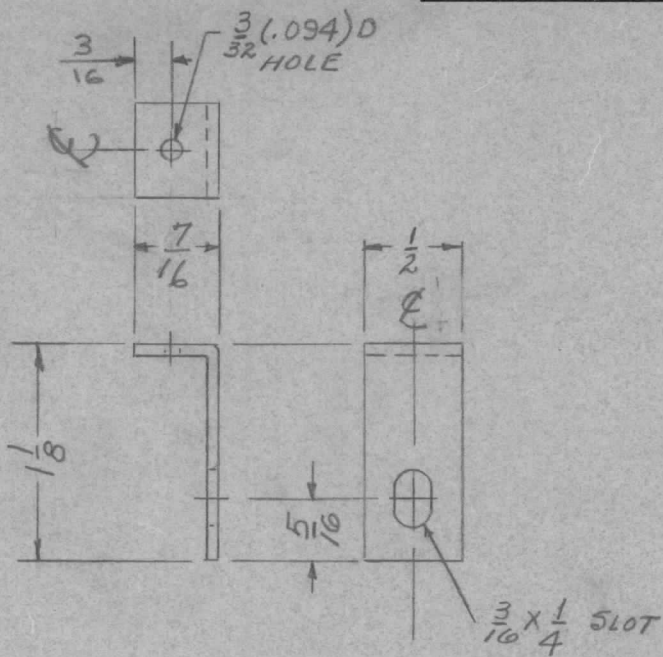
UNLESS OTHERWISE SPECIFIED DIMENSIONS ARE IN INCHES AND INCLUDE CHEMICALLY APPLIED OR PLATED FINISHES		
DECIMALS	TOLERANCES	FRACTIONS
.X ± .05		± 1/64
.XX ± .01		ANGLES
.XXX ± .005		± 0° 30'

CUT HERE
GUARANTEED
2-66

REQ.	ITEM	PART NO.	DESCRIPTION				SYMBOL
		.081	THE TECHNICAL MATERIEL CORP.				
		STOCK SIZE	MAMARONECK, NEW YORK				
A	1	ALUMINUM	BRACKET, MTG. R.F. CHOKE				
		MATERIAL					
		5052-H32	J.C. BIELE				
		TYPE & TEMPER	DRAWN	CHECKED	FINAL APPROVAL		
		HEAT TREAT. SPEC.			MS-1470 A		
		FINISH & SPEC. NO.	ELEC. DES. APP.	MECH. DES. APP.			
		S-404-IRIDITE YEL					

TOLERANCES		SCALE:				
DEC. DIM. ±		MAXIMUM ALLOWABLE TOLERANCES HAVE BEEN DETERMINED AND ANY DEVIATIONS WILL BE CAUSE FOR REJECTION.				
FRAC. DIM. ±		REMOVE ALL BURRS AND SHARP EDGES				
ANGULAR DIM. ±						

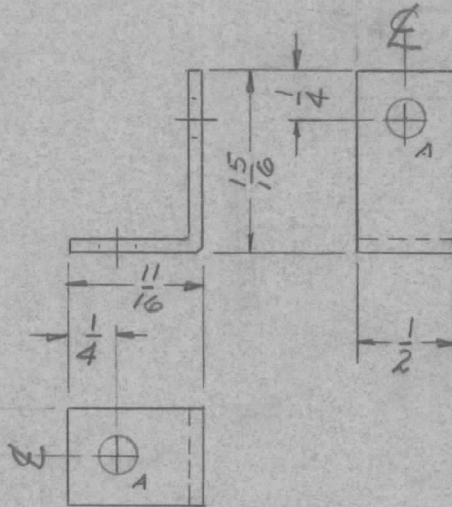
REQ. PER UNIT	USED ON			MS-1471	A
	MODEL	ASS'Y. NO.	DATE		
1	RTF-2	POW/AMP	1-6-59		



ISSUE	ITEM	CHANGED FROM	DATE	CH. NO.	DRAFTS	CHECKER	ENG. APP.	REQ. ITEM	PART NO.	DESCRIPTION	SYMBOL	
									.019	THE TECHNICAL MATERIEL CORP. MAMARONECK, NEW YORK		
									STOCK SIZE	BOTTOM CAPACITOR, MTS. BRACKET		
A	1	3/16 x 1/4 SLOT WAS 3/16 x 5/16	8/15/60			JDM	JHE		COPPER, SOFT.	POW/AMP		
									MATERIAL			
TOLERANCES			SCALE: FULL SIZE							1-6-59	JHE	ah
DEC. DIM. ±			MAXIMUM ALLOWABLE TOLERANCES HAVE BEEN DETERMINED AND ANY DEVIATIONS WILL BE CAUSE FOR REJECTION: REMOVE ALL BURRS AND SHARP EDGES									
FRAC. DIM. ± 1/64												
ANGULAR DIM. ±									SILVER PLATE			
									FINISH & SPEC. NO.	ELEC. DES. APP	MECH. DES. APP	
											MS-1471	A

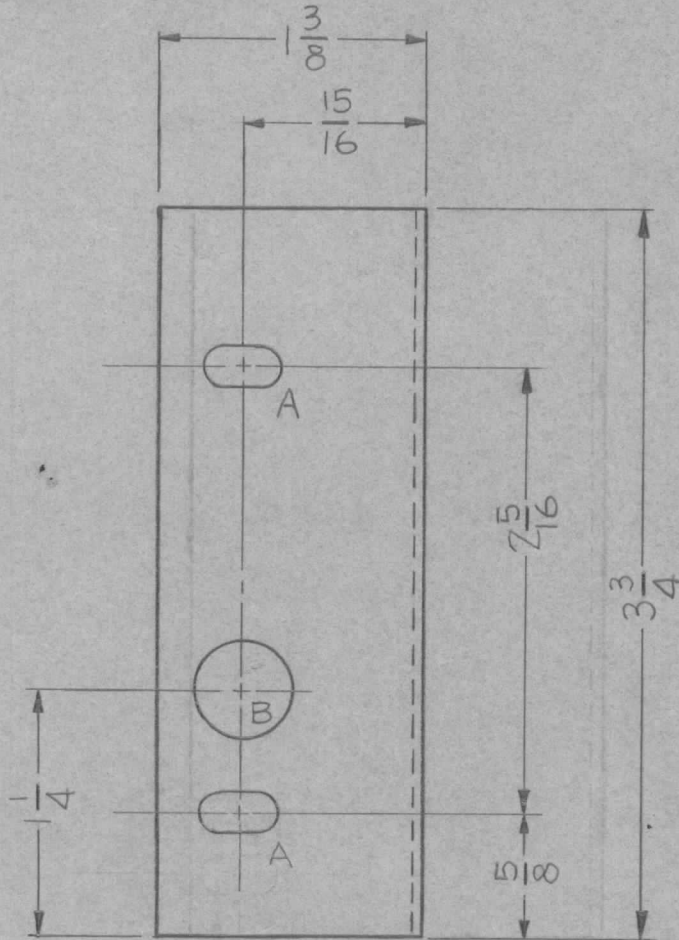
REQ. PER UNIT	USED ON			MS-1472	A
	MODEL	ASS'Y. NO.	DATE		
1	RTF-2	P/A	1-6-59		

A - $\frac{13}{64}$ (.203) DIA. HOLE
2 REQ.



ISSUE	ITEM	CHANGED FROM	DATE	CH. NO.	DRAFTS	CHECKER	ENG. APP.	REQ.	ITEM	PART NO.	DESCRIPTION	SYMBOL	
										.064 THICK STOCK SIZE	THE TECHNICAL MATERIEL CORP. MAMARONECK, NEW YORK		
										ALUMINUM	BRACKET, MOUNT		
										MATERIAL		L109	
A	.1	5404-IRIDITE WAS 5101-CAUSTIC DIP	12-8 59	1001	P		EMN						
TOLERANCES			SCALE: FULL SIZE					5052-H32		1-6-59 ave			
DEC. DIM. ±			MAXIMUM ALLOWABLE TOLERANCES HAVE BEEN DETERMINED AND ANY DEVIATIONS WILL BE CAUSE FOR REJECTION. REMOVE ALL BURRS AND SHARP EDGES					TYPE & TEMPER	HEAT TREAT. SPEC.	DRAWN	CHECKED	FINAL APPROVAL	
FRAC. DIM. ± 1/64								5404-YEL-IRIDITE					
ANGULAR DIM. ±								FINISH & SPEC. NO.		ELEC. DES. APP	MECH. DES. APP		

REQ. PER UNIT	USED ON			MS-1475	A
	MODEL	ASS'Y. NO.	DATE		
1	RTF-2	POW./AMP.	1-12-59		

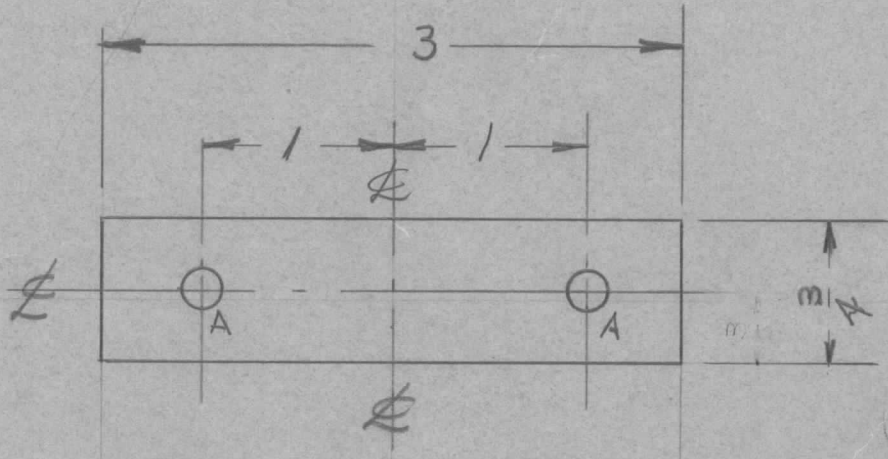


A - 13/64 X 13/32 SLOT 4 REQ
 B - 1/2 (500) DIA. 1 REQ

REQ.	ITEM	PART NO.	DESCRIPTION				SYMBOL
		.064	THE TECHNICAL MATERIEL CORP.				
		STOCK SIZE	MAMARONECK, NEW YORK				
		ALUMINUM	BRACKET, METER BOX				
		MATERIAL					
A	1	5404-YEL-IRIDITE 5701 CAUSTIC DIP	12-59	1001	J	EMN	
ISSUE	ITEM	CHANGED FROM	DATE	CH. NO.	DRAFTS	CHECKER	ENG. APP.
TOLERANCES			SCALE:				
DEC. DIM. ±			MAXIMUM ALLOWABLE TOLERANCES HAVE BEEN DETERMINED AND ANY DEVIATIONS WILL BE CAUSE FOR REJECTION:				
FRAC. DIM. ± 1/64			REMOVE ALL BURRS AND SHARP EDGES				
ANGULAR DIM. ±			5052-H-32		J.C. BIELE		
			TYPE & TEMPER	HEATTREAT. SPEC.	DRAWN	CHECKED	FINAL APPROVAL
			5404-YEL IRIDITE 5701 CAUSTIC DIP				
			FINISH & SPEC. NO.	ELEC. DES. APP	MECH. DES. APP	MS-1475	A

REQ. PER UNIT	USED ON		
	MODEL	ASS'Y. NO.	DATE
4	GPT-10K		1-27-59
10	AP-103 GPT-40K	A-1822	

MS-1478



HOLES REQ'D.
A - 13/64 DIA 2

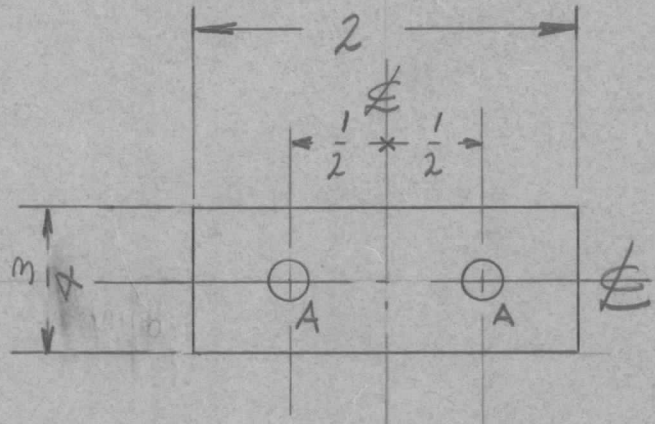
UNLESS OTHERWISE SPECIFIED
DIMENSIONS ARE IN INCHES AND INCLUDE
CHEMICALLY APPLIED OR PLATED FINISHES

DECIMALS	TOLERANCES	FRACTIONS
.X ± .05		± 1/64
.XX ± .01		ANGLES
.XXX ± .005		± 0° 30'

CUT HERE
GUARANTEED
2-66

REQ.	ITEM	PART NO.	DESCRIPTION	SYMBOL					
		1/8 THICK	THE TECHNICAL MATERIEL CORP. MAMARONECK, NEW YORK PLATE, RESISTOR MOUNT 3"						
		STOCK SIZE							
		ALUMINUM							
		MATERIAL							
ISSUE	ITEM	CHANGED FROM	DATE	CH. NO.	DRAFTS	CHECKER	ENG. APP.		
TOLERANCES			SCALE:						
DEC. DIM. ±			MAXIMUM ALLOWABLE TOLERANCES HAVE BEEN DETERMINED AND ANY DEVIATIONS WILL BE CAUSE FOR REJECTION: REMOVE ALL BURRS AND SHARP EDGES						
FRAC. DIM. ±									
ANGULAR DIM. ±									
5052-H32		IRIDITE		DRAWN		CHECKED		FINAL APPROVAL	
S-404 IRIDITE		FINISH & SPEC. NO.		ELEC. DES. APP		MECH. DES. APP		MS-1478	

REQ. PER UNIT	USED ON			MS-1479
	MODEL	ASS'Y. NO.	DATE	
18	GPT-10000		1-27-59	



HOLES REQ'D
 A - 13/64 DIA. 2

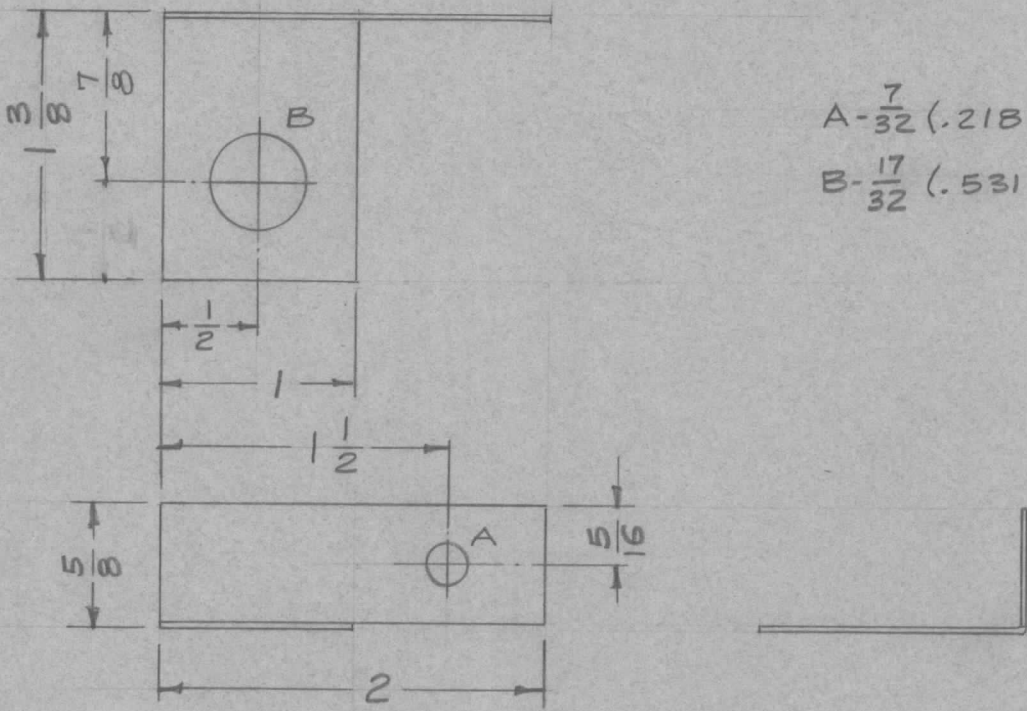
UNLESS OTHERWISE SPECIFIED
 DIMENSIONS ARE IN INCHES AND INCLUDE
 CHEMICALLY APPLIED OR PLATED FINISHES

DECIMALS	TOLERANCES	FRACTIONS
.X ± .05		± 1/64
.XX ± .01		ANGLES
.XXX ± .005		± 0° 30'

CUT HERE
 GUARANTEED
 2-66

REQ.	ITEM	PART NO.	DESCRIPTION	SYMBOL					
		1/8 THICK	THE TECHNICAL MATERIEL CORP. MAMARONECK, NEW YORK	PLATE, RESISTOR MOUNT 2"					
		STOCK SIZE							
		ALUMINUM							
		MATERIAL							
ISSUE	ITEM	CHANGED FROM	DATE	CH. NO.	DRAFTS	CHECKER	ENG. APP.		
TOLERANCES			SCALE:						
DEC. DIM. ±			MAXIMUM ALLOWABLE TOLERANCES HAVE BEEN DETERMINED AND ANY DEVIATIONS WILL BE CAUSE FOR REJECTION. REMOVE ALL BURRS AND SHARP EDGES						
FRAC. DIM. ±									
ANGULAR DIM. ±									
5052-H32		DRILLED		C.M.B.					
TYPE & TEMPER		HEAT TREAT. SPEC.		DRAWN		CHECKED		FINAL APPROVAL	
S.A.O. IRIDITE				DR				MS-1479	
FINISH & SPEC. NO.		ELEC. DES. APP		MECH. DES. APP					

REQ. PER UNIT	USED ON			MS-1483	A
	MODEL	ASS'Y. NO.	DATE		
1	TER-5000-70		1-29-59		

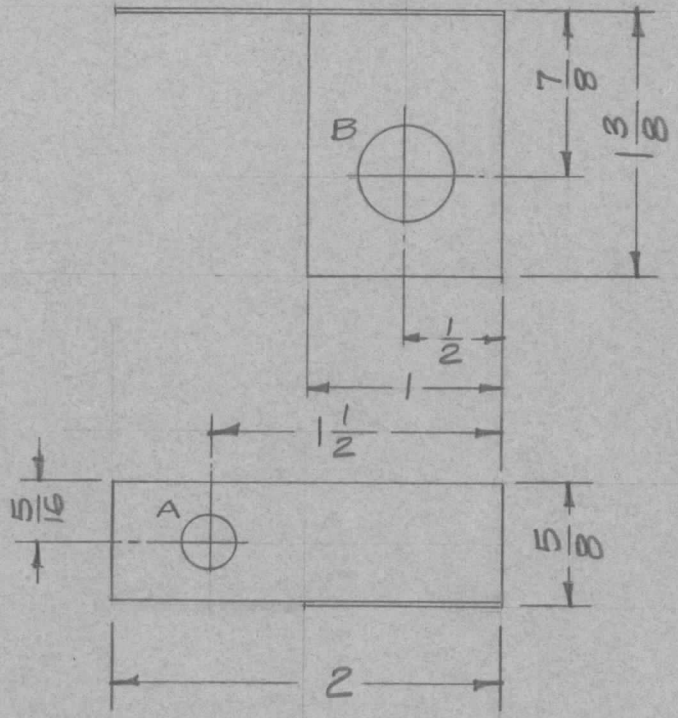


A - $\frac{7}{32}$ (.218) D. 1 Req.
 B - $\frac{17}{32}$ (.531) D. 1 Req.

REQ.	ITEM	PART NO.	DESCRIPTION				SYMBOL
			.032 THK.				THE TECHNICAL MATERIEL CORP. MAMARONECK, NEW YORK
			STOCK SIZE				
			COPPER				
A	1	STOCK SIZE WAS .025	7-31-62	#	G.S.	LEAD, GROUND, BOTTOM, LEFT	
ISSUE	ITEM	CHANGED FROM	DATE	CH. NO.	DRAFTS	CHECKER	ENG. APP.
TOLERANCES			SCALE: FULL				
DEC. DIM. \pm			MAXIMUM ALLOWABLE TOLERANCES HAVE BEEN DETERMINED AND ANY DEVIATIONS WILL BE CAUSE FOR REJECTION. REMOVE ALL BURRS AND SHARP EDGES				
FRAC. DIM. \pm $\frac{1}{64}$							
ANGULAR DIM. \pm							
TYPE & TEMPER		HEAT TREAT. SPEC.	DRAWN	CHECKED	FINAL APPROVAL		
Comm. Hard			16/29/59	HQE	G.S.		
5245 Silver Plate		.0005			MS-1483		
FINISH & SPEC. NO.		ELEC. DES. APP	MECH. DES. APP		A		

REQ. PER UNIT	USED ON		
	MODEL	ASS'Y. NO.	DATE
1	TER-5000-70		1-29-59

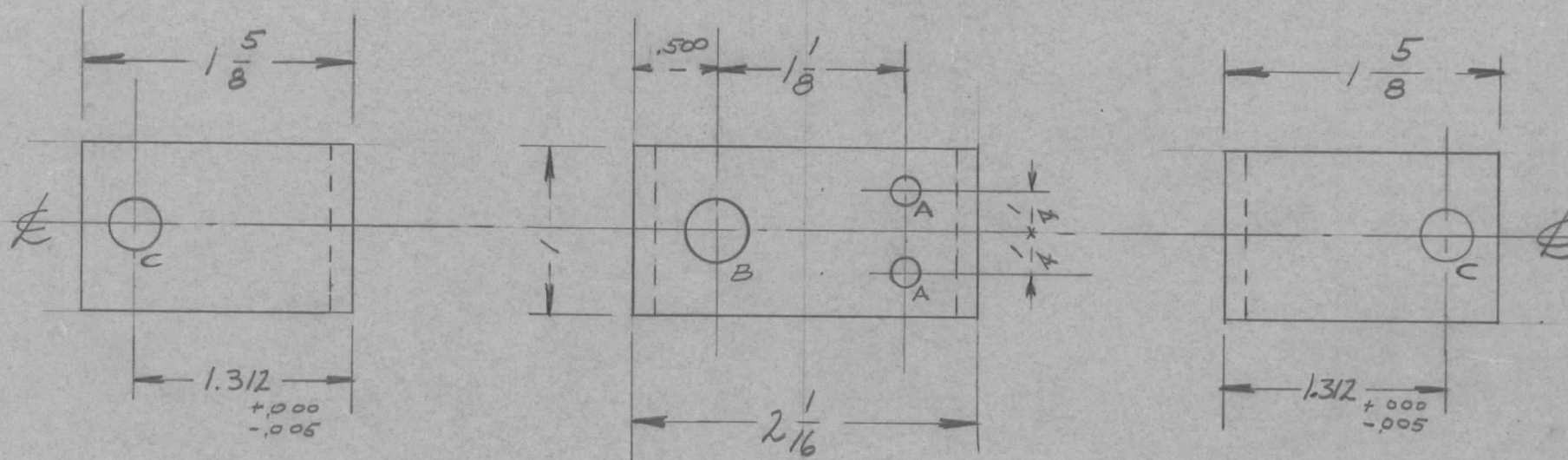
MS-1484



A - $\frac{9}{32}$ (.281) D. 1 Req.
 B - $\frac{17}{32}$ (.531) D. 1 Req.

REQ.	ITEM	PART NO.	DESCRIPTION			SYMBOL	
		.025 THK	THE TECHNICAL MATERIEL CORP.				
		STOCK SIZE	MAMARONECK, NEW YORK				
		Copper	LEAD, GROUND, BOTTOM,				
		MATERIAL	RIGHT				
ISSUE	ITEM	CHANGED FROM	DATE	CH. NO.	DRAFTS	CHECKER	ENG. APP.
TOLERANCES			SCALE: FULL				
DEC. DIM. \pm			MAXIMUM ALLOWABLE TOLERANCES HAVE BEEN DETERMINED AND ANY DEVIATIONS WILL BE CAUSE FOR REJECTION: REMOVE ALL BURRS AND SHARP EDGES				
FRAC. DIM. $\pm 1/64$							
ANGULAR DIM. \pm							
TYPE & TEMPER		HEAT TREAT. SPEC.	DRAWN	CHECKED	FINAL APPROVAL		
Comm. Hard			16/29/59	JDe	al		
5245 Silver Plate				G.G.	MS-1484		
FINISH & SPEC. NO.		ELEC. DES. APP	MECH. DES. APP				

REQ. PER UNIT	USED ON			MS-1491	A
	MODEL	ASS'Y. NO.	DATE		
2	GPT-10K	AX-104	1-26-59		



NOTE:
 ALL BENDS $90^\circ \pm 1/2^\circ$
 ALL BENDS $1/8$ R

HOLES	REQ'D.
A - $1/64$ DIA.	2
B - $3/8$ DIA.	1
C - $5/16$ DIA.	2 (FOR BB-117-6)

REQ.	ITEM	PART NO.	DESCRIPTION	SYMBOL					
			THE TECHNICAL MATERIEL CORP. MAMARONECK, NEW YORK						
			LATCH BRACKET						
A	1		ALL BENDS $1/8$ R ADDED						
ISSUE	ITEM	CHANGED FROM	DATE	CH. NO.	DRAFTS	CHECKER	ENG. APP.		
TOLERANCES			SCALE:						
DEC. DIM. \pm	$\pm .000$		MAXIMUM ALLOWABLE TOLERANCES HAVE BEEN DETERMINED AND ANY DEVIATIONS WILL BE CAUSE FOR REJECTION. REMOVE ALL BURRS AND SHARP EDGES						
FRAC. DIM. \pm	$\pm .015$								
ANGULAR DIM. \pm	$1/2^\circ$								
		5052-H32	IRIDITE		DRAWN		CHECKED		FINAL APPROVAL
					ELEC. DES. APP		MECH. DES. APP		MS-1491 A

UNLESS OTHERWISE SPECIFIED

DIMENSIONS ARE IN INCHES AND INCLUDE CHEMICALLY APPLIED OR PLATED FINISHES

FRACTIONS ± 1/64 ANGLES ± 0° 30'

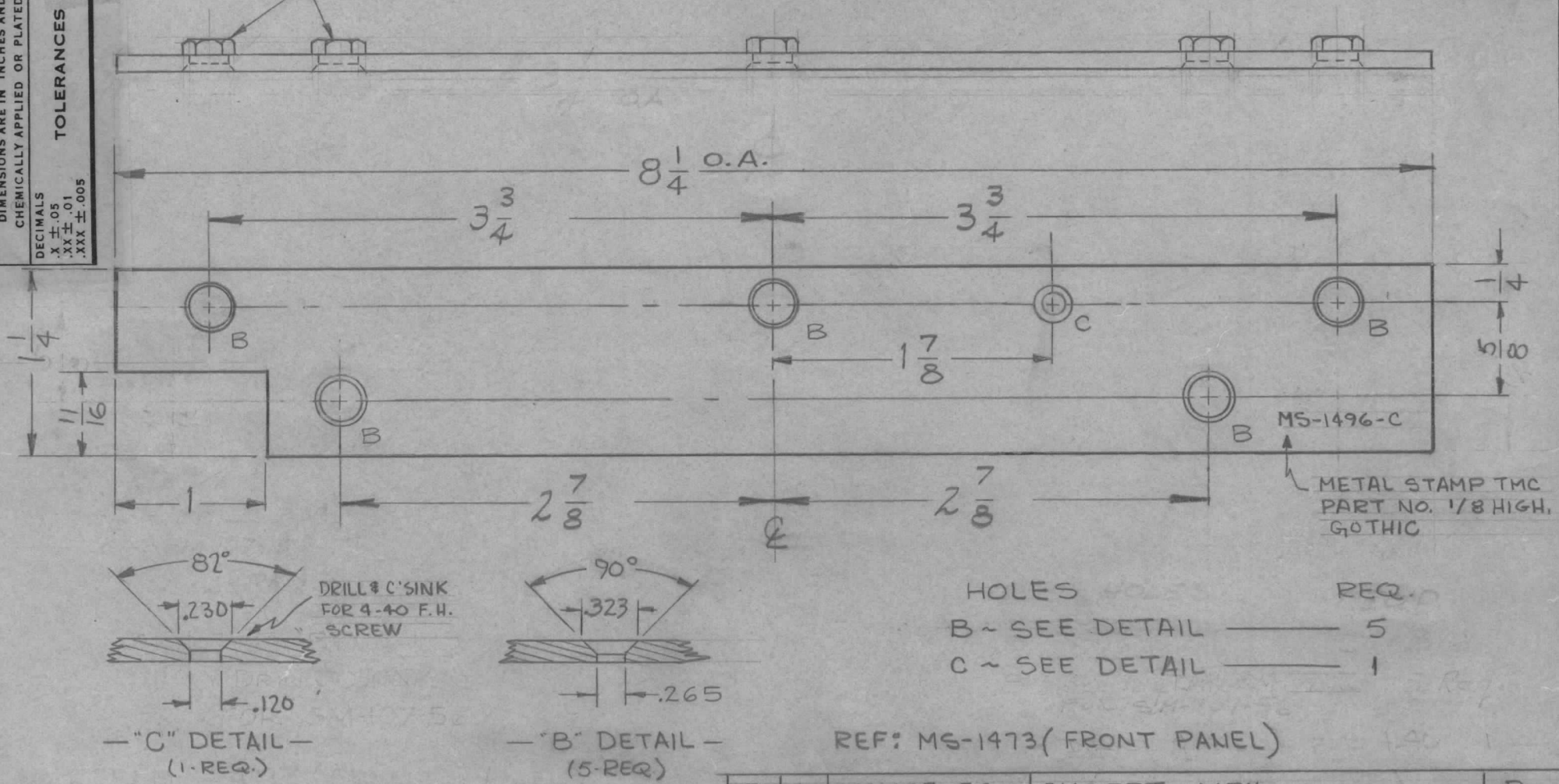
DECIMALS .X ± .05 .XX ± .01 .XXX ± .005

TOLERANCES

REQ. PER UNIT	USED ON		
	MODEL	ASS'Y. NO.	DATE
2	GPT-10000		1-26-59

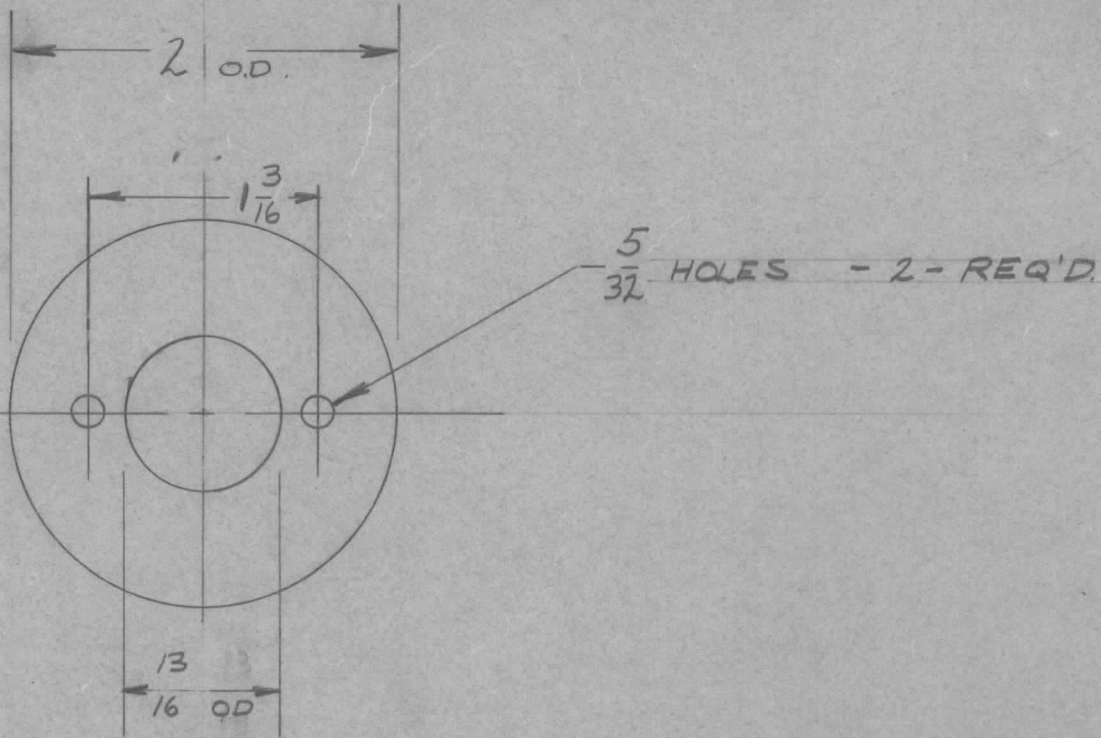
MS-1496 C

MOUNT ITEM (1) IN ALL "B" HOLES AS SHOWN AFTER FINISHING.



5	1	SM-107-56	INSERT, HEX.	B											
REQ.	ITEM	PART NO.	DESCRIPTION	SYMBOL											
C	2	ITEM (1) ADDED	THE TECHNICAL MATERIEL CORP. MAMARONECK, NEW YORK	MOUNTING PLATE											
	1	"C" DETAIL ADDED													
B	1	B-DETAIL REVISED	ALUMINUM	MATERIAL											
A	3	② B Holes added													
	2	③ A Holes deleted	5052-H32	DRAWN											
	1	Notch added													
ISSUE	ITEM	CHANGED FROM	DATE	CH. NO.	DRAFTS	CHECKER	ENG. APP.	TYPE & TEMPER	HEATTREAT. SPEC.	DRAWN	CHECKED	FINAL APPROVAL			
								IRIDITE		2B		MS-1496 C			
TOLERANCES			SCALE:					FINISH & SPEC. NO.		ELEC. DES. APP.		MECH. DES. APP.			
DEC. DIM. ±			MAXIMUM ALLOWABLE TOLERANCES HAVE BEEN DETERMINED AND ANY DEVIATIONS WILL BE CAUSE FOR REJECTION: REMOVE ALL BURRS AND SHARP EDGES												
FRAC. DIM. ±															
ANGULAR DIM. ±															

REQ. PER UNIT	USED ON			MS-1498	A
	MODEL	ASS'Y. NO.	DATE		
18	GPT-10,000	ZENER ASSY			



UNLESS OTHERWISE SPECIFIED
 DIMENSIONS ARE IN INCHES AND INCLUDE
 CHEMICALLY APPLIED OR PLATED FINISHES

DECIMALS	TOLERANCES	FRACTIONS
.X ± .05		± 1/64
.XX ± .01		ANGLES
.XXX ± .005		± 0° 30'

CUT HERE
 GUARANTEED
 2-66

REQ.	ITEM	PART NO.	DESCRIPTION	SYMBOL													
		.064 THICK	THE TECHNICAL MATERIEL CORP. MAMARONECK, NEW YORK	CONVECTORS													
		STOCK SIZE															
A	WAS G REQ GPT-10K DR. DRAW.	ALUMINUM															
		MATERIAL															
ISSUE	ITEM	CHANGED FROM	DATE	CH. NO.	DRAFTS	CHECKER	ENG. APP.	5052-H32	FILE	FILE	APP						
TOLERANCES			SCALE: FULL			6052-H32											
DEC. DIM. ±			MAXIMUM ALLOWABLE TOLERANCES HAVE BEEN DETERMINED AND ANY DEVIATIONS WILL BE CAUSE FOR REJECTION. REMOVE ALL BURRS AND SHARP EDGES			TYPE & TEMPER		HEAT TREAT. SPEC.		DRAWN		CHECKED		FINAL APPROVAL			
FRAC. DIM. ±						S404-YEL-IRIDITE				DB				MS-1498		A	
ANGULAR DIM. ±						FINISH & SPEC. NO.		ELEC. DES. APP		MECH. DES. APP							