

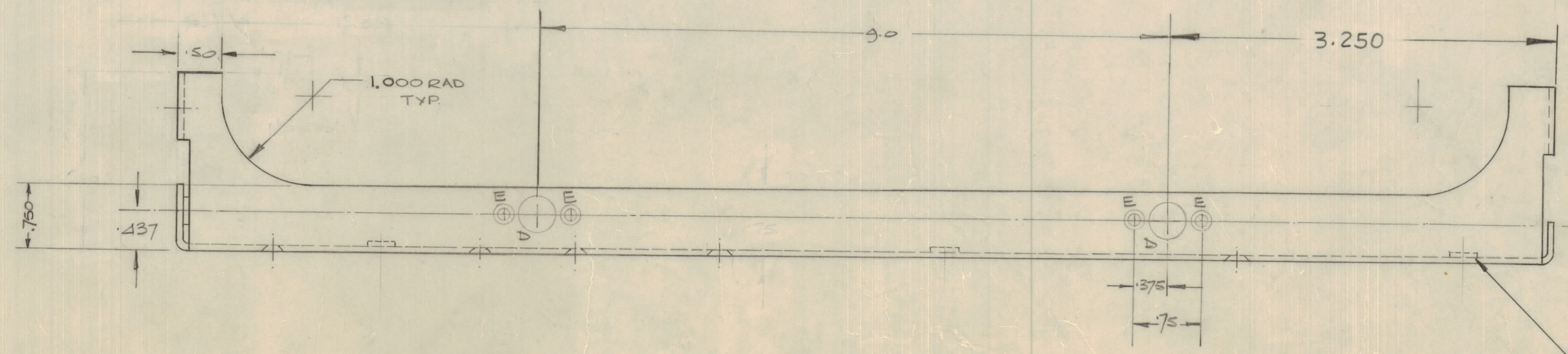
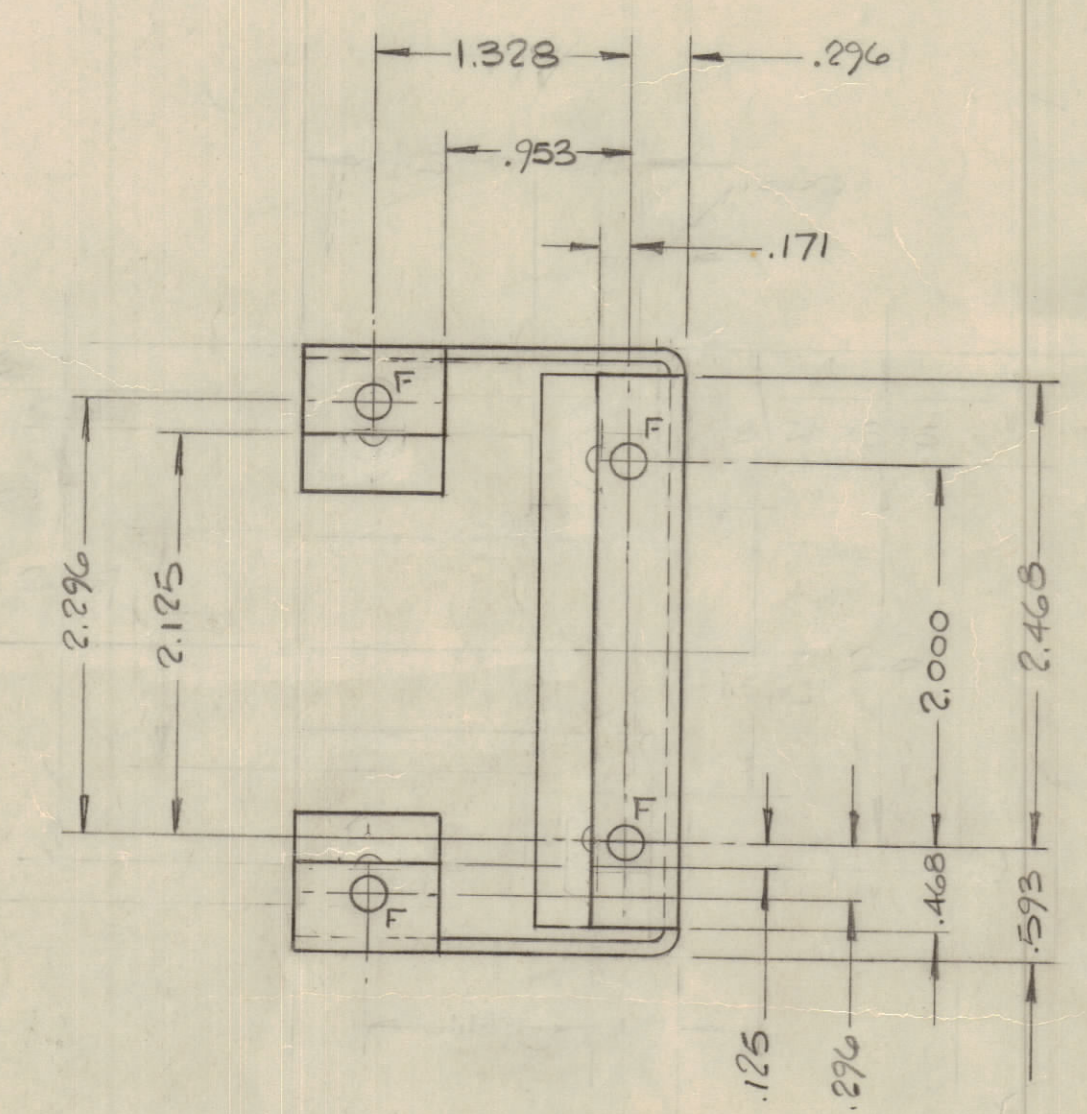
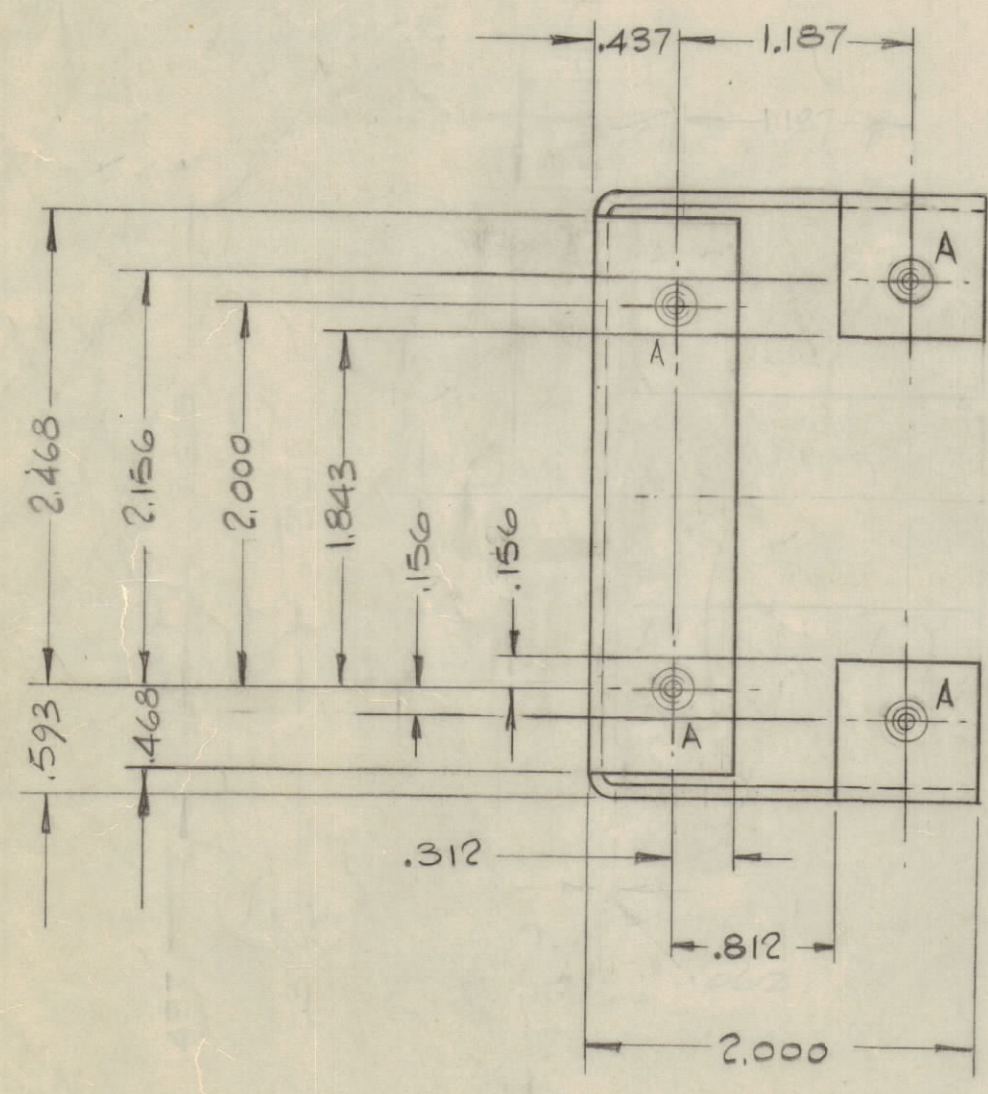
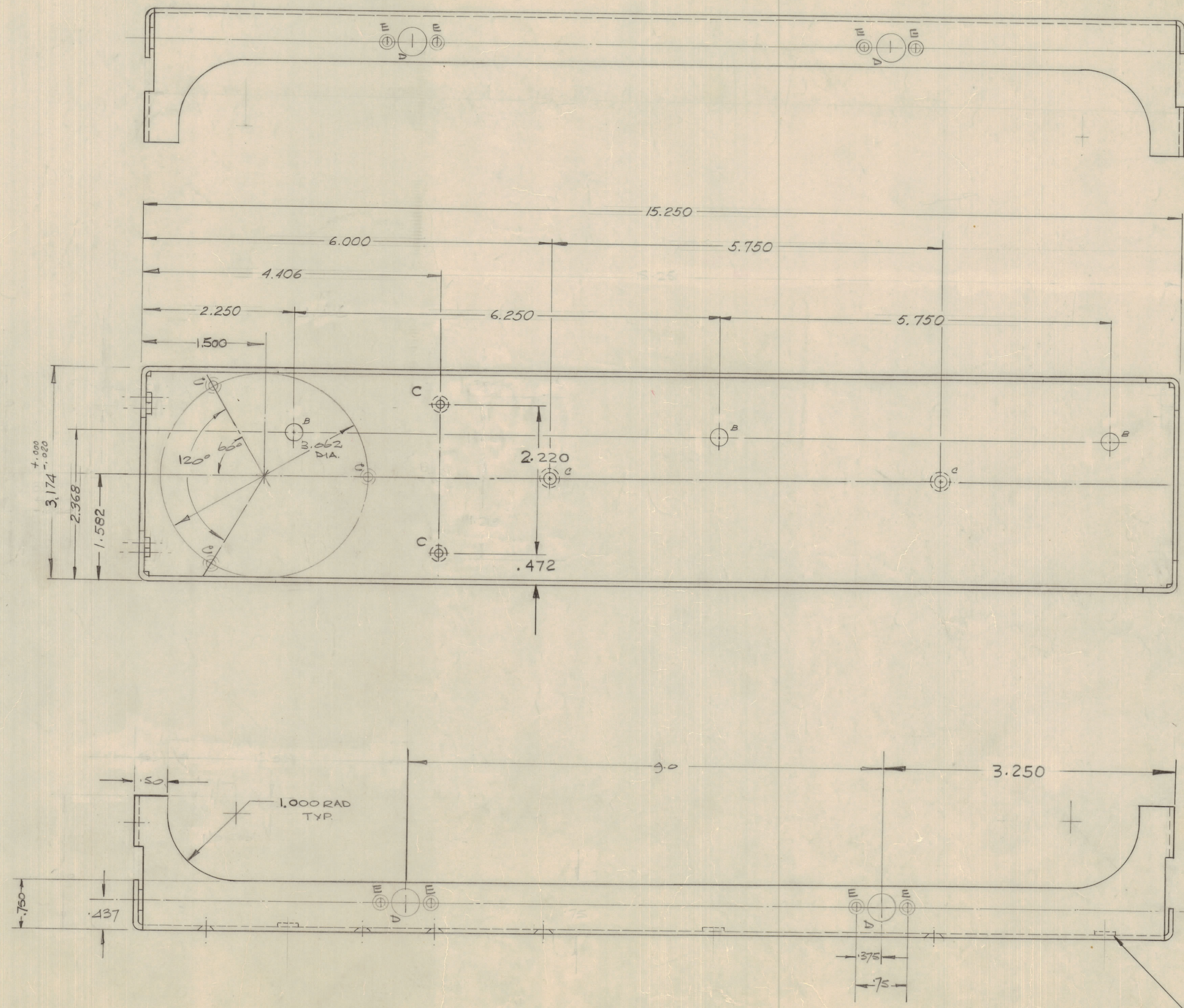
IF IT IS FOUND DESIRABLE TO CHANGE ANY TOLERANCE OR OTHER DETAIL SPECIFIED ON THIS DRAWING NOTIFY THE PURCHASER PROMPTLY.
 MAXIMUM ALLOWABLE TOLERANCES HAVE BEEN DETERMINED AND DEVIATIONS WILL BE CAUSE FOR REJECTION. REMOVE ALL BURRS AND SHARP EDGES.

DIMENSIONS IN INCHES UNLESS OTHERWISE SPECIFIED

MS 10347-1 C
 SHEET 1 OF 2

| REQ | ITEM | PART NO. | DESCRIPTION | USED ON | REMARKS |
|-----|------|---------------|--------------------------|---------|---------|
| 1 | 1 | MT-10002-2 | MIN. FASTENER, SELF/LOCK | | A HOLES |
| 3 | 2 | MT-129-1032-4 | NUT. ROUND SWAGE | | B HOLES |

| ISSUE | ITEM | CHANGED FROM | DATE | CN. NO. | DRAFTS | CHECKER | ENG APP. |
|-------|------|---------------------------|----------|---------|--------|---------|----------|
| Ø | | REL TO PROD | MAR 6/69 | | AP | | |
| A | | REV PER CEMU | MAR 72 | 1196 | CC | | Agg |
| B | | REVISED PER ENN | APR 73 | 21529 | W.B. | | RP |
| C | | NOTE: NO LONGER REQ'D ADD | 1-5-79 | 21728 | GDL | | MC |



HOLE DETAILS ~

| DEF | Nº | DETAIL |
|-----|----|--------------------------------|
| A | 4 | .213/.216 DIA |
| B | 3 | .250 DIA. |
| C | 7 | .171 DIA CSK TO .281 x 82° |
| D | 1 | .375 DIA |
| E | 3 | .101 DIA C'BORE .218 x .035 DP |
| F | 4 | .171 DIA. |

NOTE:
 NO LONGER REQUIRED
 REPLACED BY MS6972

2. INSTALL AFTER FINISHING
 1. ALL BENDS .062 INT RAD
 NOTES

| TOLERANCES UNLESS OTHERWISE SPECIFIED | SCALE: |
|--|--------|
| ALL DEC DIM : .015 → X-05 | 1/1 |
| OTHERS FRAC DIM : $\frac{1}{32}$ → XX-01 | |
| ANGULAR DIM : 0° 30' → XXX-005 | |

DRILL, FUNCH, COMMERCIAL STOCK
 SIZES AND MANUFACTURERS
 TOLERANCES ARE NOT INCLUDED

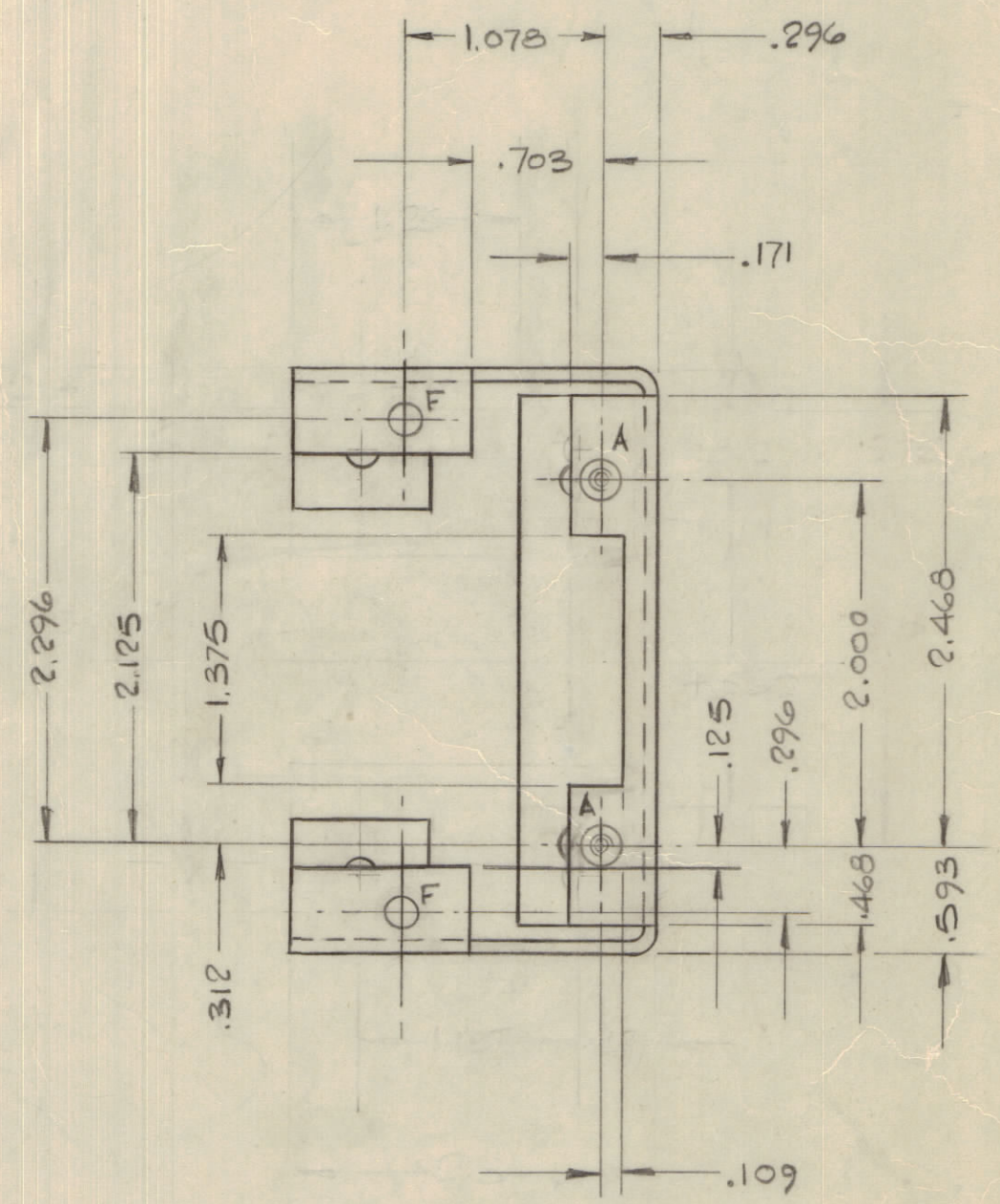
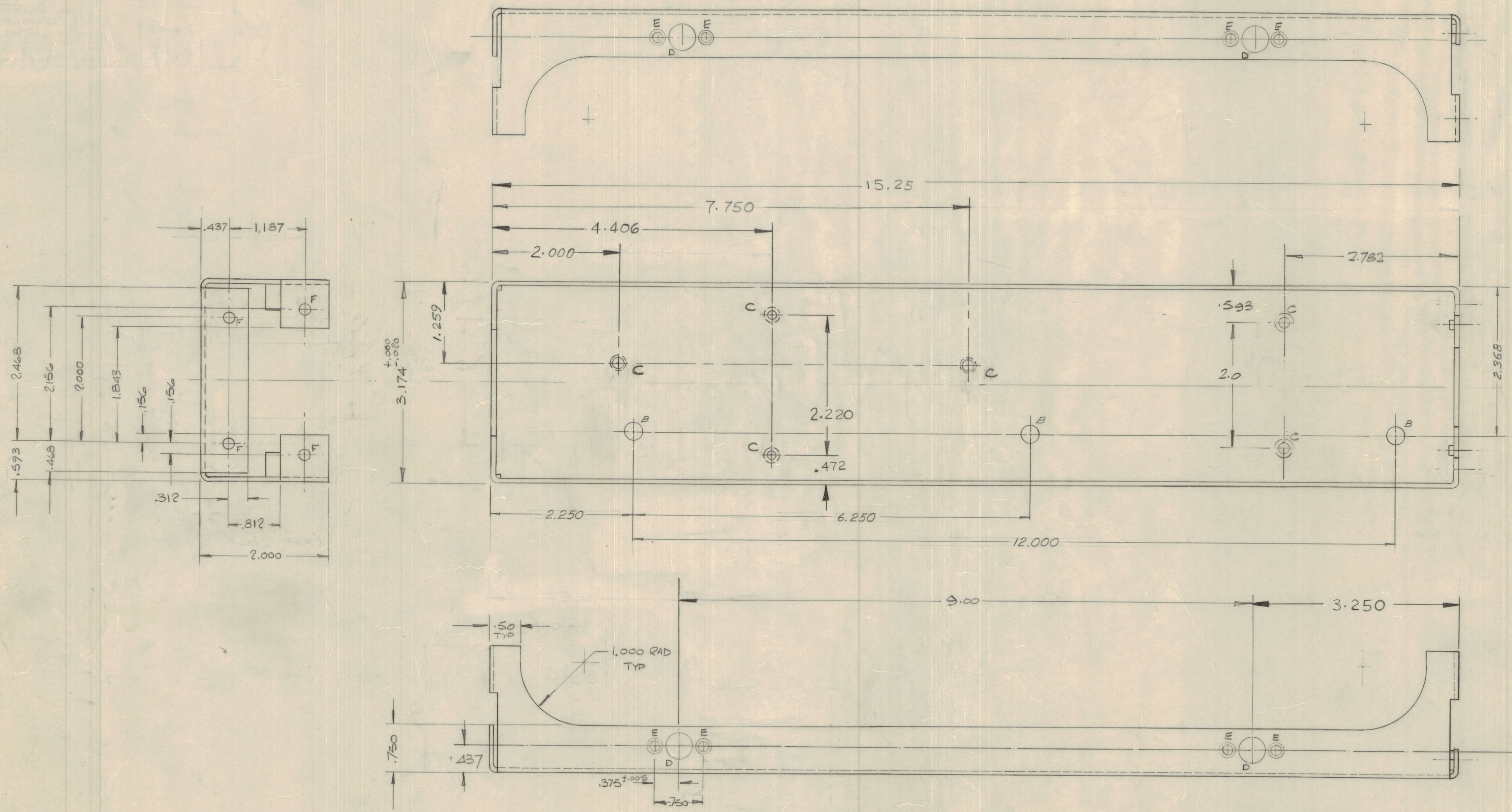
| | | | |
|--------------------|--|---------------------------|-----------------|
| 1064 THICK | TMC (Canada) LIMITED OTTAWA ONTARIO | | |
| ALUM. ALLOY | SIDE MEMBER, LEFT-HAND | | |
| MATERIAL | WEIGHT PER PC | TYPE & TEMPER | DRAWN |
| 57 S - H 34 | | BARTLETT | W |
| HEAT TREAT SPEC. | | ELEC. DES. APP. | MECH. DES. APP. |
| JDATE \$404 | | CHECKED | FINAL APPROVAL |
| FINISH & SPEC. NO. | | SHEET 1 OF 2 MS 10347-1 C | |

| | | |
|--------|-------------|------------|
| AMC 32 | 07A/69 | 6 NOV 1968 |
| MODEL | PROJECT NO. | ASS'Y NO. |
| | | DATE |

| IF IT IS FOUND DESIRABLE TO CHANGE ANY TOLERANCE OR OTHER DETAIL SPECIFIED ON THIS DRAWING NOTIFY THE PURCHASER PROMPTLY. | | | | DIMENSIONS IN INCHES UNLESS OTHERWISE SPECIFIED | | | |
|--|------|---------------------------|--------------|---|--------|---------|-----------|
| MAXIMUM ALLOWABLE TOLERANCES HAVE BEEN DETERMINED AND DEVIATIONS WILL BE CAUSE FOR REJECTION REMOVE ALL BURRS AND SHARP EDGES. | | | | | | | |
| ISSUE | ITEM | CHANGED FROM | DATE | CN. NO. | DRAFTS | CHECKER | ENG. APP. |
| Ø | | REL TO PROD | MAR 6 1968 | | AP | | |
| A | | REV PER CEMU | OCT 2 72 | 1196 | C.C. | | |
| B | | REV PER EMN | APRIL 7 1971 | 21524 | N.B. | | K.P. |
| C | | NOTE: NO LONGER REQ'D ADD | NOV 15 77 | 21728 | GOL | | |

MS 10347-2 C
SHEET 2 OF 2

| REQ | ITEM | PART NO. | DESCRIPTION | USED ON | REMARKS |
|-----|------|---------------|------------------------|---------|-----------|
| 2 | 1 | NT 10002-2 | MW. FASTENER SELF-LOCK | | 'A' HOLES |
| 3 | 2 | NT 129-1032-4 | NUT ROUND SWAGE | | 'B' HOLES |



NOTE -
NO LONGER REQUIRED
REPLACED BY MS 6971

HOLE DETAILS ~

| DEF | QTY | DETAIL |
|-----|-----|-----------------------------------|
| A | 2 | .213/.216 DIA |
| B | 3 | .250 DIA |
| C | 6 | .171 DIA CSK TO .281 x 82° |
| D | 4 | .375 DIA |
| E | 8 | .101 DIA BORE .218 DIA X .025 DP. |
| F | 6 | .171 DIA |

1. ALL BENDS .062 INT RAD

NOTE

| | |
|---------------------------------------|-------------------------------|
| TOLERANCES UNLESS OTHERWISE SPECIFIED | SCALE: 1/1 |
| ALL DEC DIM ±.015 | DRILL PUNCH, COMMERCIAL STOCK |
| OTHERS FRACTIONAL DIM ±.01 | SIZES AND MANUFACTURERS |
| ANGULAR DIM ± 0° 30' | TOLERANCES ARE NOT INCLUDED |

| | | | |
|--------|-------------|------------|-------------|
| MODEL | PROJECT NO. | ASS'Y. NO. | DATE |
| AMC 33 | 074/69 | | 18 NOV 1968 |

STOCK SIZE: .062 THICK

TMC (Canada) LIMITED
OTTAWA ONTARIO

MATERIAL: ALUM. ALLOY

WEIGHT PER PC: 575 - 314

TYPE & TEMPER: BARTLETT

HEAT TREAT SPEC: 1R1DITE S404

CHECKED: [Signature]

FINISH & SPEC. NO.: SHEET 2 OF 2 MS 10347-2 C