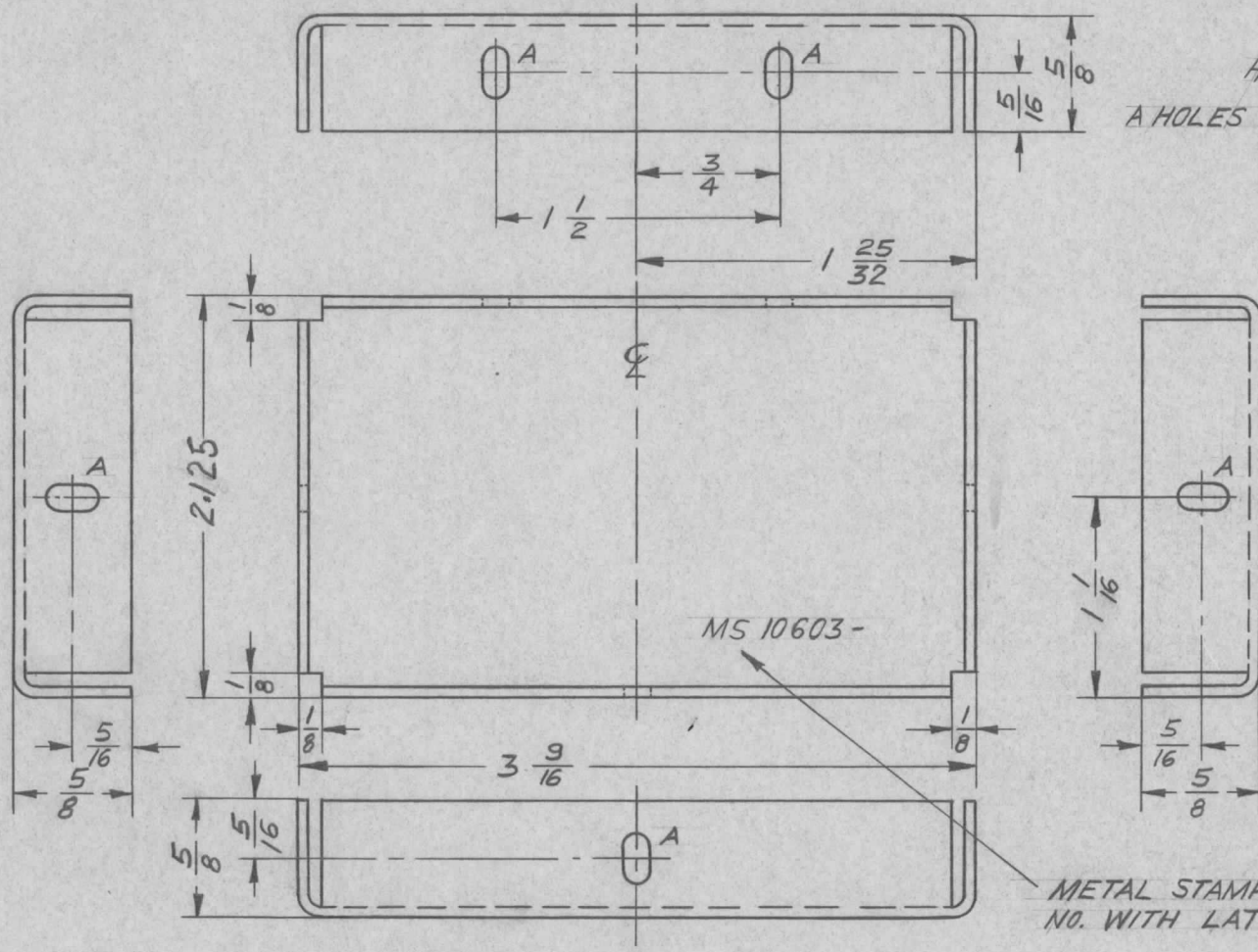


ISSUE	ITEM	CHANGED FROM	DATE	CN. NO.	DRAFTS	CHECKER	ENG. APP.	REQ.	ITEM	PART NO.	DESCRIPTION	SYMBOL
-------	------	--------------	------	---------	--------	---------	-----------	------	------	----------	-------------	--------

UNLESS OTHERWISE SPECIFIED:

1. USE MATERIAL THICKNESS FOR MAXIMUM RADIUS ON ALL BENDS
2. ALL ANGULAR BENDS 90 DEGREES
3. REMOVE ALL BURRS AND SHARP EDGES
4. MOUNT INSERTS AFTER FINISHING

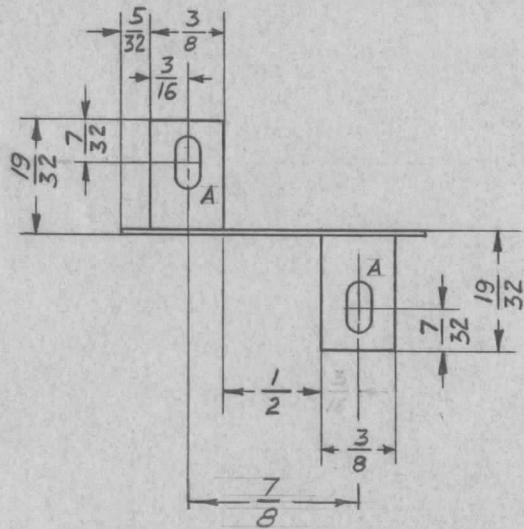


HOLE LEGEND
 A HOLES 9/64 x 9/32, 5 REQ'D
 SLOTTED

METAL STAMP ON REAR TMC PART NO. WITH LATEST REVISION LETTER.

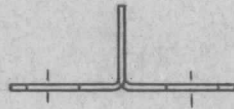
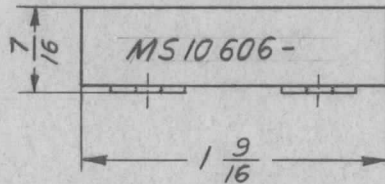
AMC 20		020/65		A 10 374		18-10-65		.064 THK.		TMC (Canada) LIMITED OTTAWA ONTARIO			
MODEL		PROJECT NO.		ASS'Y. NO.		DATE		STOCK SIZE		BRACKET, MODULE HOUSING			
USED ON								ALUM.		LEFT - RIGHT			
MAXIMUM ALLOWABLE TOLERANCES HAVE BEEN DETERMINED AND DEVIATIONS WILL BE CAUSE FOR REJECTION. REMOVE ALL BURRS AND SHARP EDGES				IF IT IS FOUND DESIRABLE TO CHANGE ANY TOLERANCE OR OTHER DETAIL SPECIFIED ON THIS DRAWING NOTIFY THE PURCHASER PROMPTLY.				MATERIAL		WEIGHT PER PC.		DRAWN	
								575 H32				ELEC. DES. APP.	
TOLERANCES				SCALE 1:1				TYPE & TEMPER				MECH. DES. APP.	
ALL OTHERS				DIMENSIONS IN INCHES UNLESS OTHERWISE SPECIFIED				HEAT TREAT. SPEC.		CHECKED		FINAL APPROVAL	
DEC. DIM. ± .005				DRILL, PUNCH, COMMERCIAL STOCK SIZES AND MANUFACTURERS TOLERANCES ARE NOT INCLUDED.				S 404 YELLOW IRIDITE				MS 10 603	
FRAC. DIM. ± 1/64													
ANGULAR DIM. ± 0°30'													

ISSUE	ITEM	CHANGED FROM	DATE	CN. NO.	DRAFTS	CHECKER	ENG. APP.	REQ.	ITEM	PART NO.	DESCRIPTION	SYMBOL
Ø		RELEASED FOR PRODUCTION	11-1-66		RD							



- UNLESS OTHERWISE SPECIFIED:
1. USE MATERIAL THICKNESS FOR MAXIMUM RADIUS ON ALL BENDS
 2. ALL ANGULAR BENDS 90 DEGREES
 3. REMOVE ALL BURRS AND SHARP EDGES

HOLE A - SLOT - 9/64 x 9/32

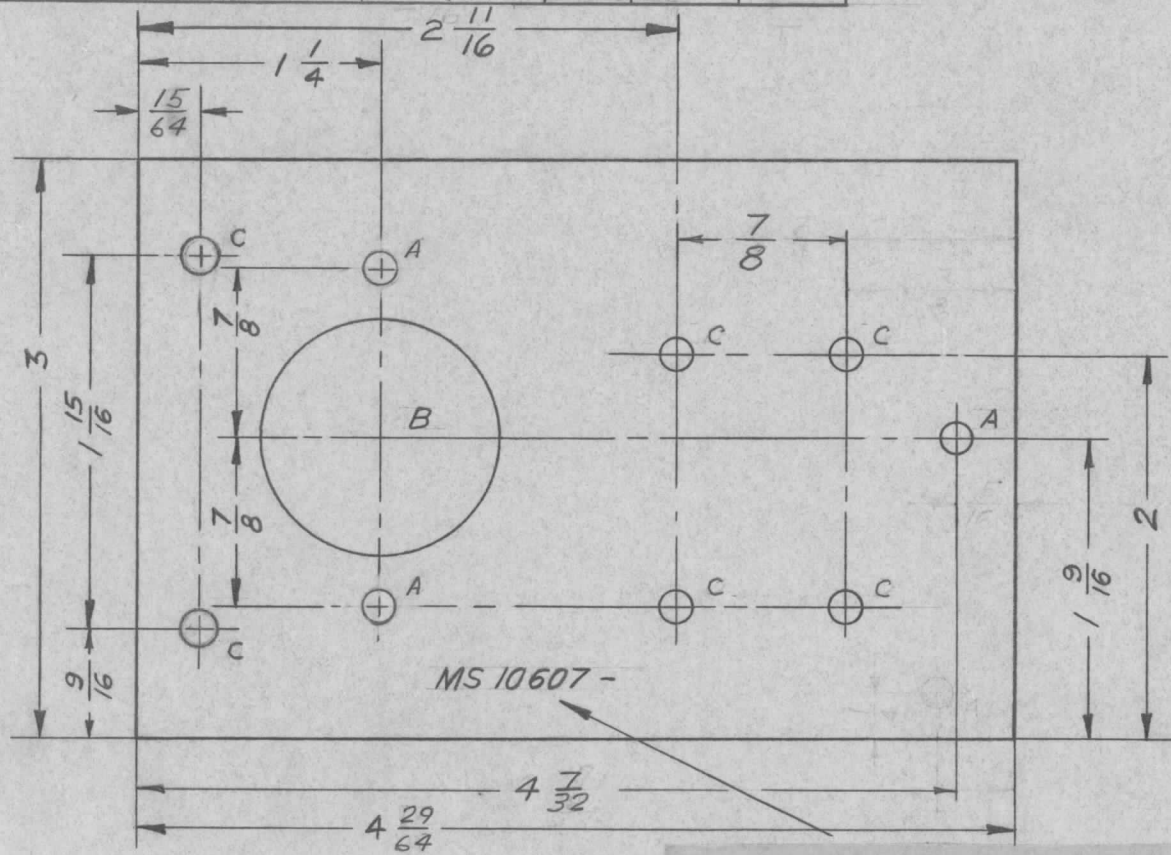


METAL STAMP TMC PART NO. 1/8
HIGH GOTHIC W/LATEST REVISION LETTER

AMC 20	020/65	A 10 376	29-10-65	.021 THK.		TMC (Canada) LIMITED	
MODEL	PROJECT NO.	ASS'Y. NO.	DATE	STOCK SIZE		OTTAWA	ONTARIO
USED ON				COPPER		SHIELD, OUTPUT	
MAXIMUM ALLOWABLE TOLERANCES HAVE BEEN DETERMINED AND DEVIATIONS WILL BE CAUSE FOR REJECTION. REMOVE ALL BURRS AND SHARP EDGES				MATERIAL		(PRE-AMP)	
				IF IT IS FOUND DESIRABLE TO CHANGE ANY TOLERANCE OR OTHER DETAIL SPECIFIED ON THIS DRAWING NOTIFY THE PURCHASER PROMPTLY.		WEIGHT PER PC.	
TOLERANCES				TYPE & TEMPER		AWD.	BCP
SCALE 1:1				HEAT TREAT. SPEC.		DRAWN	ELEC. DES. APP.
DIMENSIONS IN INCHES UNLESS OTHERWISE SPECIFIED				S 245 SILVER PLATE		CHECKED	FINAL APPROVAL
DRILL, PUNCH, COMMERCIAL STOCK SIZES AND MANUFACTURERS TOLERANCES ARE NOT INCLUDED.				FINISH & SPEC. NO.		MS 10 606 Ø	
ALL OTHERS	DEC. DIM. ±						
	FRAC. DIM. ± 1/64						
	ANGULAR DIM. ± 0° 30'						

ISSUE	ITEM	CHANGED FROM	DATE	CN. NO.	DRAFTS	CHECKER	ENG. APP.	REQ.	ITEM	PART NO.	DESCRIPTION	SYMBOL
-------	------	--------------	------	---------	--------	---------	-----------	------	------	----------	-------------	--------

REL. TO PROD. 15-11-65 GM



HOLE	DESC.	REQ'D.
A HOLE	11/64 DIA	3
B HOLE	1 1/4 DIA	1
C HOLE	13/64 DIA	6

FRONT VIEW

UNLESS OTHERWISE SPECIFIED:

1. USE MATERIAL THICKNESS FOR MAXIMUM RADIUS ON ALL BENDS
2. ALL ANGULAR BENDS 90 DEGREES
3. REMOVE ALL BURRS AND SHARP EDGES

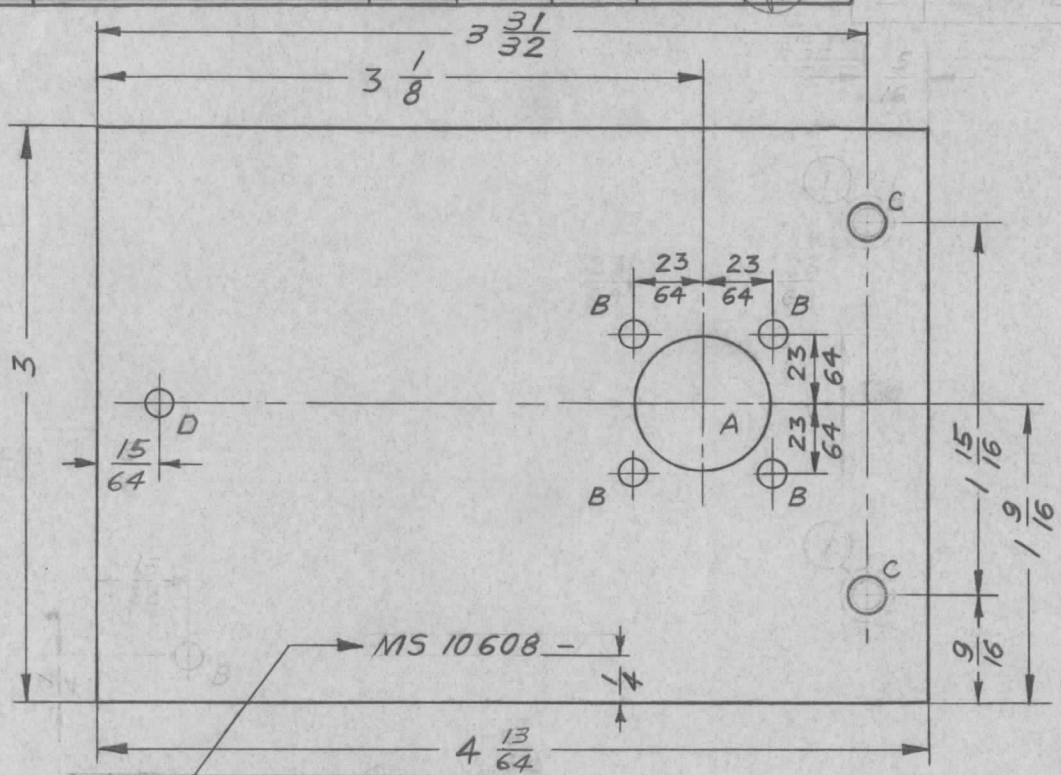
METAL STAMP TMC PART NO. 1/8
HIGH GOTHIC ON REAR W/LATEST REVISION LETTER

Ref.: LD 10 192

AMC 20 -16	020/66	A 10376	15-11-65	.064 THK		TMC (Canada) LIMITED	
MODEL	PROJECT NO.	ASS'Y. NO.	DATE	STOCK SIZE		OTTAWA	ONTARIO
USED ON				ALUM.	POWER RECEPTACLE		
MAXIMUM ALLOWABLE TOLERANCES HAVE BEEN DETERMINED AND DEVIATIONS WILL BE CAUSE FOR REJECTION. REMOVE ALL BURRS AND SHARP EDGES				MATERIAL		MOUNTING PLATE	
				575 H32			
IF IT IS FOUND DESIRABLE TO CHANGE ANY TOLERANCE OR OTHER DETAIL SPECIFIED ON THIS DRAWING NOTIFY THE PURCHASER PROMPTLY.				WEIGHT PER PC.		Drawn	MECH. DES. APP.
				TYPE & TEMPER			
TOLERANCES				HEAT TREAT. SPEC.		ELEC. DES. APP.	
SCALE N.T.S.				S 404		FINAL APPROVAL	
DIMENSIONS IN INCHES UNLESS OTHERWISE SPECIFIED				YELLOW IRIDITE		MS 10 607	
				FINISH & SPEC. NO.			
DRILL, PUNCH, COMMERCIAL STOCK SIZES AND MANUFACTURERS TOLERANCES ARE NOT INCLUDED.						Ø	

ISSUE	ITEM	CHANGED FROM	DATE	CN. NO.	DRAFTS	CHECKER	ENG. APP.	REQ.	ITEM	PART NO.	DESCRIPTION	SYMBOL
-------	------	--------------	------	---------	--------	---------	-----------	------	------	----------	-------------	--------

Ø		REL TO PROD.	15-11-65		GM		<i>(Signature)</i>	2	MS 10608	54495 UNIT		
---	--	--------------	----------	--	----	--	--------------------	---	----------	------------	--	--



HOLE LEGEND	REQ.
A HOLE 11/16 DIA	1
B HOLES 1/8 DIA	4
C HOLES 13/64 DIA	2
D HOLE 11/64 DIA	1

FRONT VIEW

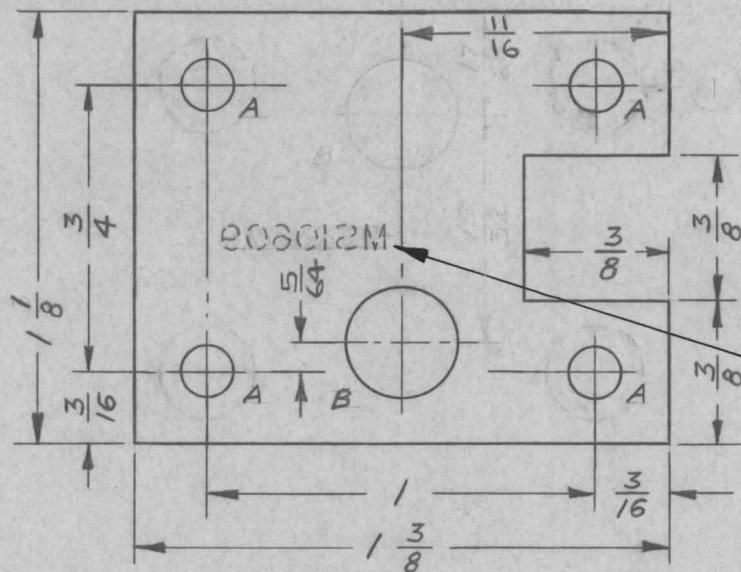
METAL STAMP TMC PART NO. 1/8
HIGH GOTHIC ON REAR W/LATEST REVISION LETTER

Ref: LD 10193

AMC 20-16	020/66	A 10376	15-11-65	.064 THK.		TMC (Canada) LIMITED OTTAWA ONTARIO			
MODEL	PROJECT NO.	ASS'Y. NO.	DATE	STOCK SIZE					
USED ON				ALUM.	ANT. CONNECTOR				
MAXIMUM ALLOWABLE TOLERANCES HAVE BEEN DETERMINED AND DEVIATIONS WILL BE CAUSE FOR REJECTION. REMOVE ALL BURRS AND SHARP EDGES				IF IT IS FOUND DESIRABLE TO CHANGE ANY TOLERANCE OR OTHER DETAIL SPECIFIED ON THIS DRAWING NOTIFY THE PURCHASER PROMPTLY.				MOUNTING PLATE	
								MATERIAL	
TOLERANCES				SCALE N.T.S.				575 H32	
								TYPE & TEMPER	
ALL OTHERS				DIMENSIONS IN INCHES UNLESS OTHERWISE SPECIFIED				HEAT TREAT. SPEC.	
								DRILL, PUNCH, COMMERCIAL STOCK SIZES AND MANUFACTURERS TOLERANCES ARE NOT INCLUDED.	
DEC. DIM. ±				S 404 YELLOW IRIDITE				MS 10608	
FRAC. DIM. ± 1/64				FINISH & SPEC. NO.					
ANGULAR DIM. ±								Ø	

ISSUE	ITEM	CHANGED FROM	DATE	CN. NO.	DRAFTS	CHECKER	ENG. APP.	REQ.	ITEM	PART NO.	DESCRIPTION	SYMBOL
Ø	1	RELEASED FOR PROD	JAN 17/66		RL		<i>RP</i>					
A		LMC 20 REF ADD	19-4-66		RD	<i>RD</i>	<i>RP</i>					
B		ONE "B" HOLE DELETED	MAY 11/66		RPL		<i>RP</i>					
C		REF. ADDED, LD10221 LD10222 LD10223 + LD10224	MAY 16/66		RPL	<i>RP</i>	<i>RP</i>					

HOLE LEGEND	REQ'D
A HOLE .193 DIA (#10 DRILL)	4
B HOLE 9/32 DIA	2



FRONT VIEW

METAL STAMP TMC PART NO. 1/8
HIGH GOTHIC ON REAR W/LATEST REVISION LETTER

REF. LD 10194 (AMC20) (LMC20)
LD 10221
LD 10222
LD 10223
LD 10224 } BAA 4

REMOVE ALL BURRS AND SHARP EDGES

BAA 4	049/66	A10451	16-5-66
LMC 20	046/66	A10458	19-4-66
AMC 20	020/65	A10458	20-10-65
MODEL	PROJECT NO.	ASS'Y. NO.	DATE

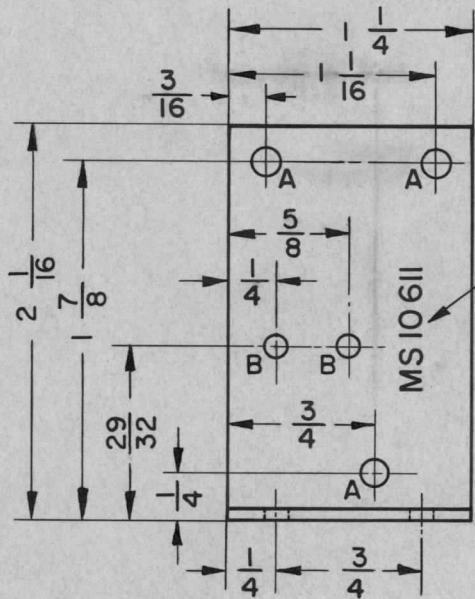
USED ON	
MAXIMUM ALLOWABLE TOLERANCES HAVE BEEN DETERMINED AND DEVIATIONS WILL BE CAUSE FOR REJECTION. REMOVE ALL BURRS AND SHARP EDGES	IF IT IS FOUND DESIRABLE TO CHANGE ANY TOLERANCE OR OTHER DETAIL SPECIFIED ON THIS DRAWING NOTIFY THE PURCHASER PROMPTLY.

TOLERANCES		SCALE 2:1
ALL OTHERS	DEC. DIM. ±	DIMENSIONS IN INCHES UNLESS OTHERWISE SPECIFIED
	FRAC. DIM. ± 1/64	DRILL, PUNCH, COMMERCIAL STOCK SIZES AND MANUFACTURERS TOLERANCES ARE NOT INCLUDED.
	ANGULAR DIM. ±	

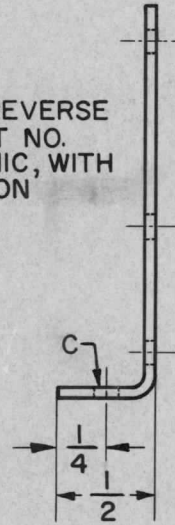
.064 THK.	TMC (Canada) LIMITED OTTAWA ONTARIO	
ALUM.	POTENTIOMETER MOUNTING	
MATERIAL	WEIGHT PER PC.	BRACKET
575 H 32		
TYPE & TEMPER	DRAWN <i>Kms.</i>	MECH. DES. APP. <i>RP</i>
HEAT TREAT. SPEC.	ELEC. DES. APP. <i>RP</i>	
5404 YELLOW IRIDITE	CHECKED <i>RP</i>	FINAL APPROVAL
FINISH & SPEC. NO.	BEDFORD	MS 10609

C

ISSUE	ITEM	CHANGED FROM	DATE	CN. NO.	DRAFTS	CHECKER	ENG. APP.	REQ.	ITEM	PART NO.	DESCRIPTION	SYMBOL
Ø		RELEASED FOR PROD.	17/1/66		RL		(Signature)					



METAL STAMP, REVERSE SIDE, TMC PART NO. 1/8 HIGH GOTHIC, WITH LATEST REVISION LETTER



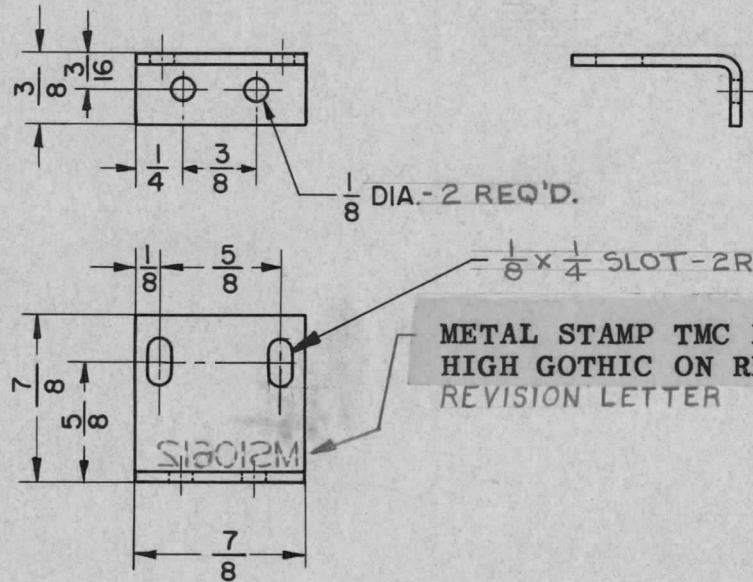
HOLE	DESCRIPTION	REQ'D
A HOLE	.189-194 DIA. (#10 DR.)	3
B HOLE	1/8 DIA	2
C HOLE	5/32 DIA	2

UNLESS OTHERWISE SPECIFIED:

1. USE MATERIAL THICKNESS FOR MAXIMUM RADIUS ON ALL BENDS
2. ALL ANGULAR BENDS 90 DEGREES
3. REMOVE ALL BURRS AND SHARP EDGES

AMC20	020 / 65	A 10 382	5-10-65	.064 THK		TMC (Canada) LIMITED	
MODEL	PROJECT NO.	ASS'Y. NO.	DATE	STOCK SIZE		OTTAWA ONTARIO	
USED ON				ALUM.		DRIVER BRACKET	
MAXIMUM ALLOWABLE TOLERANCES HAVE BEEN DETERMINED AND DEVIATIONS WILL BE CAUSE FOR REJECTION. REMOVE ALL BURRS AND SHARP EDGES				MATERIAL		WEIGHT PER PC.	
				57SH32			
IF IT IS FOUND DESIRABLE TO CHANGE ANY TOLERANCE OR OTHER DETAIL SPECIFIED ON THIS DRAWING NOTIFY THE PURCHASER PROMPTLY.				TYPE & TEMPER		DRAWN	
						ELEC. DES. APP.	
TOLERANCES				SCALE 1:1		MECH. DES. APP.	
DEC. DIM. ±				DIMENSIONS IN INCHES UNLESS OTHERWISE SPECIFIED		CHECKED	
FRAC. DIM. ± 1/64				DRILL, PUNCH, COMMERCIAL STOCK SIZES AND MANUFACTURERS TOLERANCES ARE NOT INCLUDED.		FINAL APPROVAL	
ANGULAR DIM. ± 0°30'				HEAT TREAT. SPEC.		BEDFORD	
ALL OTHERS				S 404 YELLOW IRIDITE		MS 10 611	
				FINISH & SPEC. NO.		Ø	

ISSUE	ITEM	CHANGED FROM	DATE	CN. NO.	DRAFTS	CHECKER	ENG. APP.	REQ.	ITEM	PART NO.	DESCRIPTION	SYMBOL
Ø		REL TO PROD.	OCT. 10/65		GM							



METAL STAMP TMC PART NO. 1/8
HIGH GOTHIC ON REAR W/LATEST
REVISION LETTER

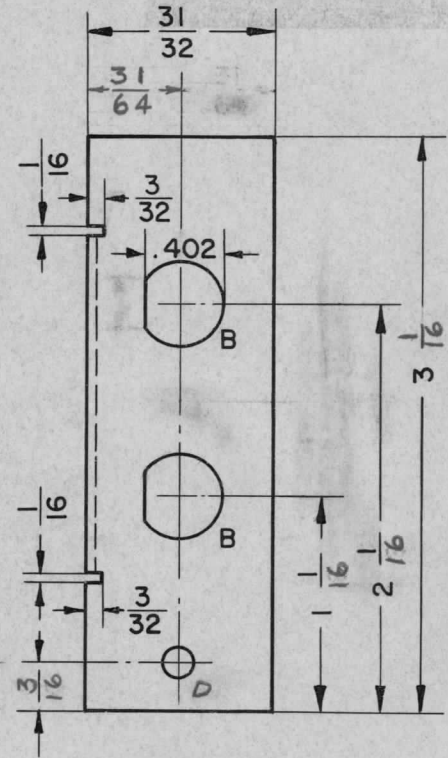
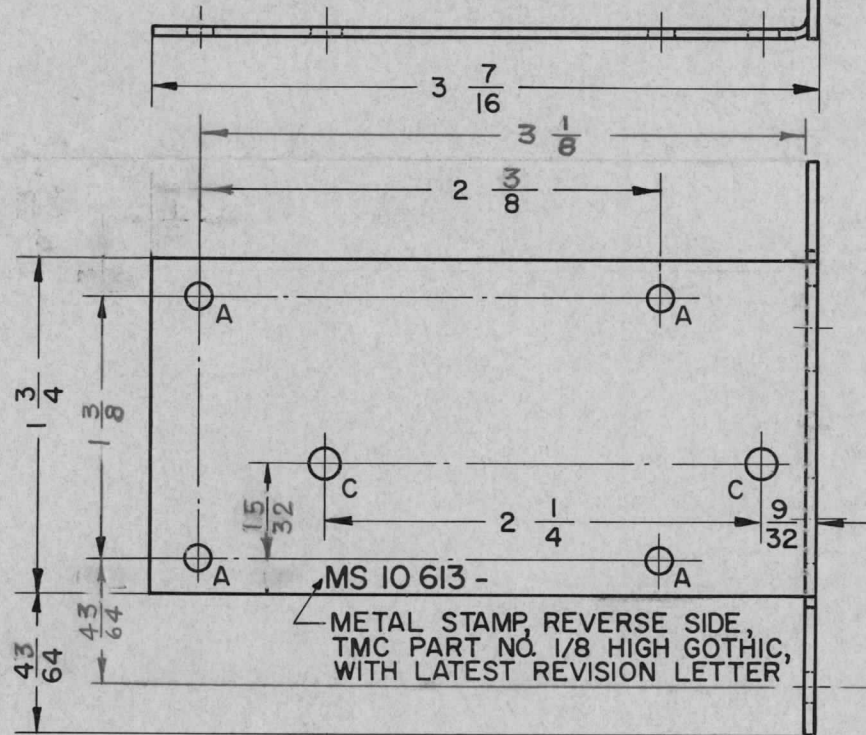
UNLESS OTHERWISE SPECIFIED:

1. USE MATERIAL THICKNESS FOR MAXIMUM RADIUS ON ALL BENDS
2. ALL ANGULAR BENDS 90 DEGREES
3. REMOVE ALL BURRS AND SHARP EDGES

AMC 20		020/65		A 10 382		5-10-65		.064 THK		TMC (Canada) LIMITED OTTAWA ONTARIO					
MODEL		PROJECT NO.		ASS'Y. NO.		DATE		STOCK SIZE							
USED ON								ALUM.		DRIVER BOARD BARRIER					
MAXIMUM ALLOWABLE TOLERANCES HAVE BEEN DETERMINED AND DEVIATIONS WILL BE CAUSE FOR REJECTION. REMOVE ALL BURRS AND SHARP EDGES								MATERIAL					WEIGHT PER PC.		
								IF IT IS FOUND DESIRABLE TO CHANGE ANY TOLERANCE OR OTHER DETAIL SPECIFIED ON THIS DRAWING NOTIFY THE PURCHASER PROMPTLY.							
TOLERANCES															
								SCALE 1:1							
ALL OTHERS		DEC. DIM. ±		DIMENSIONS IN INCHES UNLESS OTHERWISE SPECIFIED		S 404									
		FRAC. DIM. ± 1/64		DRILL, PUNCH, COMMERCIAL STOCK SIZES AND MANUFACTURERS TOLERANCES ARE NOT INCLUDED.		YELLOW IRIDITE									
		ANGULAR DIM. ± 0°30'				FINISH & SPEC. NO.									

ISSUE	ITEM	CHANGED FROM	DATE	CN. NO.	DRAFTS	CHECKER	ENG. APP.	REQ.	ITEM	PART NO.	DESCRIPTION	SYMBOL
Ø		RELEASED FOR PRODUCTION	11-1-66		RD		(RP)					
A		33/64 DELETED	MAY 17/66	CENN 014	GM	(RP)	(RP)					

HOLE LEGEND
 A HOLE .189 - .194 DIA (#10 DRILL)
 B HOLE 7/16 DIA 'D-HOLE'
 C HOLE 9/64 DIA
 D HOLE 5/32 DIA



UNLESS OTHERWISE SPECIFIED:

1. USE MATERIAL THICKNESS FOR MAXIMUM RADIUS ON ALL BENDS
2. ALL ANGULAR BENDS 90 DEGREES
3. REMOVE ALL BURRS AND SHARP EDGES
4. MOUNT INSERTS AFTER FINISHING

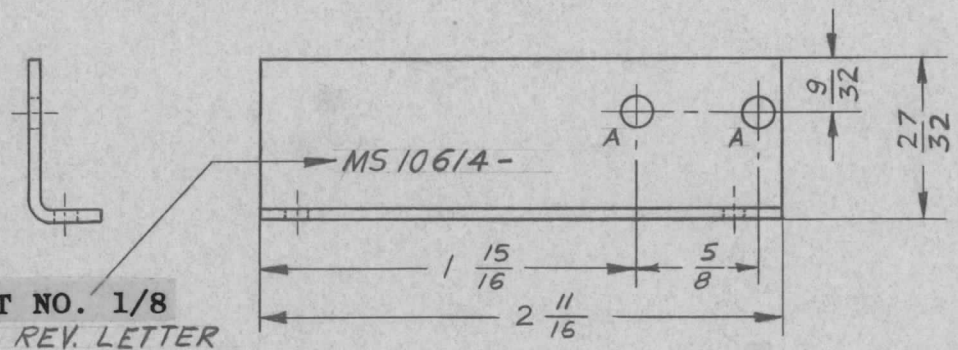
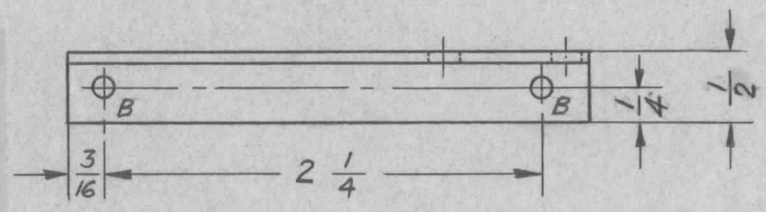
AMC 20	020/66	A 10 384	15-11-65	.064 THK.		TMC (Canada) LIMITED	
MODEL	PROJECT NO.	ASS'Y. NO.	DATE	STOCK SIZE		OTTAWA	ONTARIO
USED ON				ALUMINUM		MODULE CHASSIS	
MAXIMUM ALLOWABLE TOLERANCES HAVE BEEN DETERMINED AND DEVIATIONS WILL BE CAUSE FOR REJECTION. REMOVE ALL BURRS AND SHARP EDGES				MATERIAL	WEIGHT PER PC.		
				57S H32			
IF IT IS FOUND DESIRABLE TO CHANGE ANY TOLERANCE OR OTHER DETAIL SPECIFIED ON THIS DRAWING NOTIFY THE PURCHASER PROMPTLY.				TYPE & TEMPER		Drawn	
TOLERANCES				SCALE :	HEAT TREAT. SPEC.	DRAWN	ELEC. DES. APP.
ALL OTHERS DEC. DIM. ± .005 FRAC. DIM. ± 1/64 ANGULAR DIM. ± 0°30'				DIMENSIONS IN INCHES UNLESS OTHERWISE SPECIFIED	S 404	Checked	FINAL APPROVAL
				DRILL, PUNCH, COMMERCIAL STOCK SIZES AND MANUFACTURERS TOLERANCES ARE NOT INCLUDED.	YELLOW IRIDITE	BEDFORD	
				FINISH & SPEC. NO.		MS 10 613	

ISSUE	ITEM	CHANGED FROM	DATE	CN. NO.	DRAFTS	CHECKER	ENG. APP.	REQ.	ITEM	PART NO.	DESCRIPTION	SYMBOL
Ø		REL. TO PROD.	15-11, 65		GM							

HOLE LEGEND	REQ.
A HOLES	5/32 DIA - 2
B HOLES	.125 DIA - 2

UNLESS OTHERWISE SPECIFIED:

1. USE MATERIAL THICKNESS FOR MAXIMUM RADIUS ON ALL BENDS
2. ALL ANGULAR BENDS 90 DEGREES
3. REMOVE ALL BURRS AND SHARP EDGES



METAL STAMP TMC PART NO. 1/8
HIGH GOTHIC W/LATEST REV. LETTER

AMC 20		020/66		A 10 384		15-11-65		.064 THK.		TMC (Canada) LIMITED OTTAWA ONTARIO		
MODEL		PROJECT NO.		ASS'Y. NO.		DATE		STOCK SIZE		MODULE SHIELD		
USED ON				ALUMINUM		MATERIAL		WEIGHT PER PC.				
MAXIMUM ALLOWABLE TOLERANCES HAVE BEEN DETERMINED AND DEVIATIONS WILL BE CAUSE FOR REJECTION. REMOVE ALL BURRS AND SHARP EDGES				IF IT IS FOUND DESIRABLE TO CHANGE ANY TOLERANCE OR OTHER DETAIL SPECIFIED ON THIS DRAWING NOTIFY THE PURCHASER PROMPTLY.		575 H32		TYPE & TEMPER				
						HEAT TREAT. SPEC.		DRAWN		ELEC. DES. APP.		MECH. DES. APP.
TOLERANCES				SCALE N.T.S.		YELLOW IRIDITE		CHECKED		FINAL APPROVAL		
ALL OTHERS		DEC. DIM. ±		DIMENSIONS IN INCHES UNLESS OTHERWISE SPECIFIED		FINISH & SPEC. NO.		BEDFORD		MS 10 614		Ø
		FRAC. DIM. ± 1/64		DRILL, PUNCH, COMMERCIAL STOCK SIZES AND MANUFACTURERS TOLERANCES ARE NOT INCLUDED.								
		ANGULAR DIM. ± 0°30'										

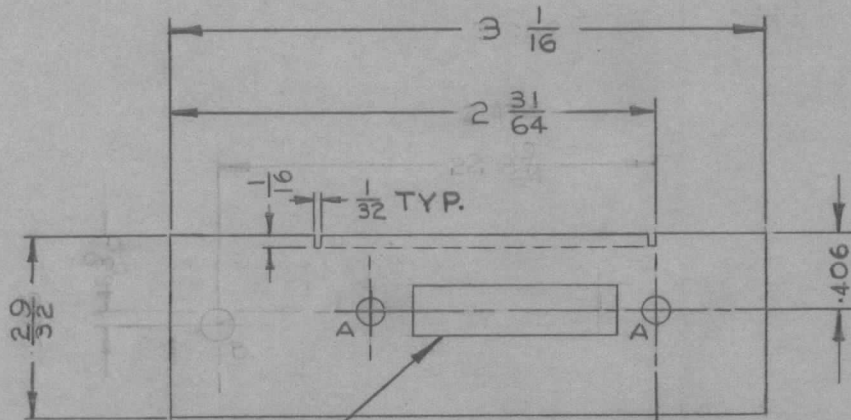
IF IT IS FOUND DESIRABLE TO CHANGE ANY TOLERANCE OR OTHER DETAIL SPECIFIED ON THIS DRAWING NOTIFY THE PURCHASER PROMPTLY.

MS10623

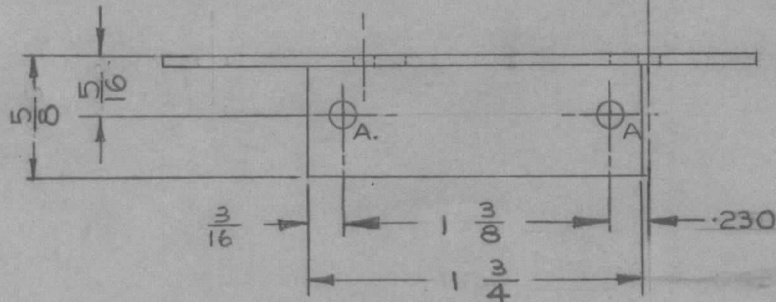
MAXIMUM ALLOWABLE TOLERANCES HAVE BEEN DETERMINED AND DEVIATIONS WILL BE CAUSE FOR REJECTION. REMOVE ALL BURRS AND SHARP EDGES

USED ON

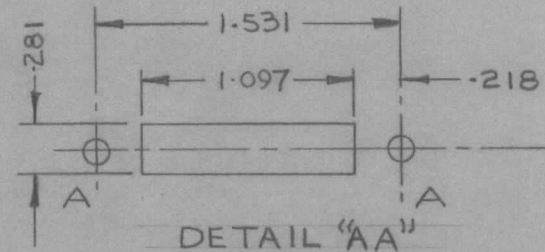
MODEL	PROJECT NO.	ASS'Y. NO.	DATE
AMC20	020/66	A10366	DEC2/65



SEE DETAIL "A-A"



HOLE	DESCRIPTION	REQ'D.
A	9/64 DIA.	4
B	5/32 DIA.	1



B	WAS ONE "B" HOLE	MAY 1/67	RPL	
A	REDRAWN AND REDIMENSIONED	FEB 7/66	GM	
Ø	REL. FOR PROD.	JAN. 17/66	RL	

ISSUE	ITEM	CHANGED FROM	DATE	CN. NO.	DRAFTS	CHECKER	ENG. APP.
-------	------	--------------	------	---------	--------	---------	-----------

TOLERANCES			SCALE 1:1				
ALL OTHERS	DEC. DIM. ± .XXX .005		DIMENSIONS IN INCHES UNLESS OTHERWISE SPECIFIED				
	FRAC. DIM. ± 1/64		DRILL, PUNCH, COMMERCIAL STOCK SIZES AND MANUFACTURERS TOLERANCES ARE NOT INCLUDED.				
	ANGULAR DIM. ±						

REQ.	ITEM	PART NO.	DESCRIPTION	SYMBOL
		064	TMC (Canada) LIMITED OTTAWA ONTARIO	BRACKET, MODULE EXTENSION
		STOCK SIZE		
		ALUMINUM		
		MATERIAL	WEIGHT PER PC.	
		TYPE & TEMPER	RL	
		575-H34	DRAWN	ELEC. DES. APP. MECH. DES. APP.
		HEAT TREAT. SPEC.		
		5404 IRIDITE	CHECKED	FINAL APPROVAL
		FINISH & SPEC. NO.	BEDFORD	MS10623 B

ISSUE	ITEM	CHANGED FROM	DATE	CN. NO.	DRAFTS	CHECKER	ENG. APP.	REQ.	ITEM	PART NO.	DESCRIPTION	SYMBOL
0		RELEASED FOR PRODUCTION	11-1-66		RD							

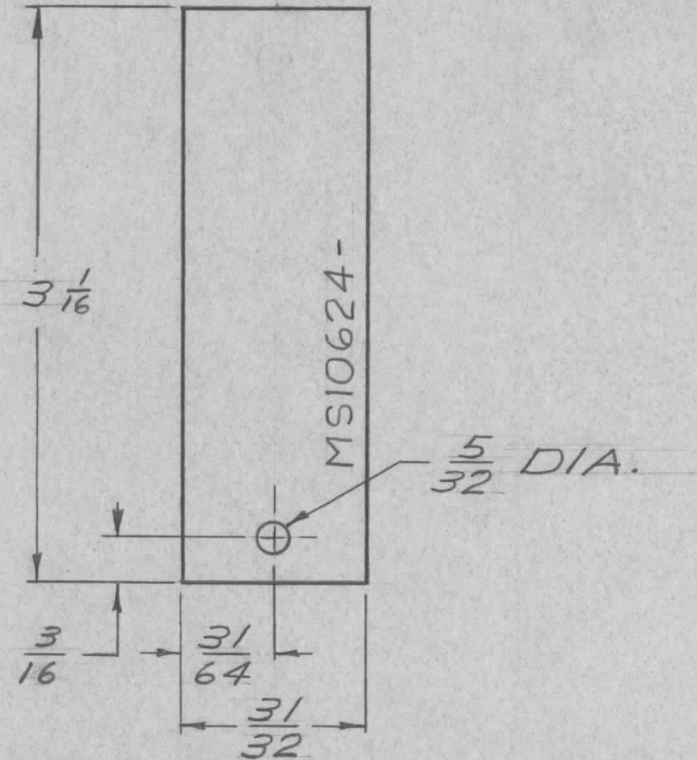
NOTES

UNLESS OTHERWISE SPECIFIED:

1. USE MATERIAL THICKNESS FOR MAXIMUM RADIUS ON ALL BENDS

2. REMOVE ALL BURRS AND SHARP EDGES

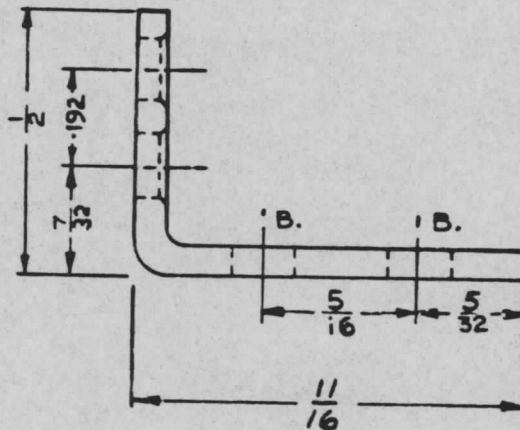
3. METAL STAMP TMC PART NO. 1/8 HIGH GOTHIC WITH LATEST REVISION LETTER.



AMC 20		O20/66		AMC20-4-12		9 NOV 65		.064 THK		TMC (Canada) LIMITED			
MODEL		PROJECT NO.		ASS'Y. NO.		DATE		STOCK SIZE		OTTAWA		ONTARIO	
USED ON								ALUM		PLATE			
MAXIMUM ALLOWABLE TOLERANCES HAVE BEEN DETERMINED AND DEVIATIONS WILL BE CAUSE FOR REJECTION. REMOVE ALL BURRS AND SHARP EDGES				IF IT IS FOUND DESIRABLE TO CHANGE ANY TOLERANCE OR OTHER DETAIL SPECIFIED ON THIS DRAWING NOTIFY THE PURCHASER PROMPTLY.				MATERIAL		WEIGHT PER PC.		MODULE BLANKING	
								575 H 32				RD	
TOLERANCES				SCALE 1:1				TYPE & TEMPER		DRAWN		ELEC. DES. APP.	MECH. DES. APP.
ALL OTHERS		DEC. DIM. ±		DIMENSIONS IN INCHES UNLESS OTHERWISE SPECIFIED				HEAT TREAT. SPEC.		74			
		FRAC. DIM. ± 1/64		DRILL, PUNCH, COMMERCIAL STOCK SIZES AND MANUFACTURERS TOLERANCES ARE NOT INCLUDED.				S404 YELLOW IRIDITE		CHECKED		FINAL APPROVAL	
		ANGULAR DIM. ±						FINISH & SPEC. NO.		BEDFORD		MS10624	

ISSUE	ITEM	CHANGED FROM	DATE	EN NO	DRAFTS	CHECKER	ENG APP	REQ	ITEM	PART NO	DESCRIPTION	SYMBOL
0		REL. TO PROD.	25-3-66		RD		<i>[Signature]</i>					
A		.305 WAS 9/32	APRIL 15/66		GM		<i>[Signature]</i>					
B		5/16 WAS .305	MAY 4/66		GM		<i>[Signature]</i>					
C		REV. AS PER EMN	NOV. 1/67	EMN. 308	AP	RPL	<i>[Signature]</i>					

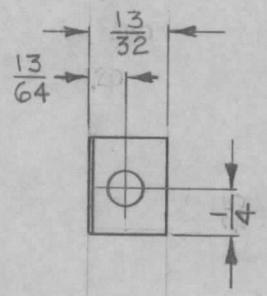
A. HOLES .110 DIA. -
 CSK. 60° X .120 DIA - 2 REQ.
 B. HOLES $\frac{1}{16}$ DIA. - 2 REQ.



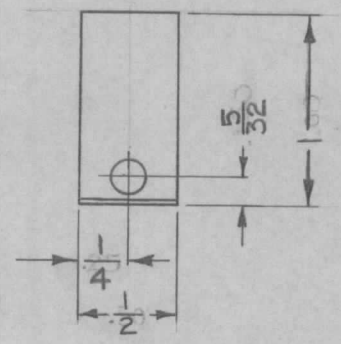
MODEL		005/66	PROJECT NO.		28-1-66	DATE		STOCK SIZE		.064		TMC (Canada) LIMITED	
USED ON		MAXIMUM ALLOWABLE TOLERANCES HAVE BEEN DETERMINED AND DEVIATIONS WILL BE CAUSE FOR REJECTION REMOVE ALL BURRS AND SHARP EDGES		IF IT IS FOUND DESIRABLE TO CHANGE ANY TOLERANCE OR OTHER DETAIL SPECIFIED ON THIS DRAWING NOTIFY THE PURCHASER PROMPTLY.		ALUMINUM		MATERIAL		WEIGHT PER PC.		OTTAWA ONTARIO	
TOLERANCES		DEC. DIM. ± .005		SCALE 3:1		575-H34		TYPE & TEMPER		GAM		XTAL MOUNTING BRKT.	
ALL OTHERS		FRAC. DIM. ± 1/64		DIMENSIONS IN INCHES UNLESS OTHERWISE SPECIFIED		S404 IRIDIOTE		HEAT TREAT SPEC		DRAWN		ELEC DES APP	
		ANGULAR DIM. ±		DRILL PUNCH. COMMERCIAL STOCK SIZES AND MANUFACTURERS TOLERANCES ARE NOT INCLUDED		FINISH & SPEC. NO.				CHECKED		MECH DES. APP	
										PLUMMER		FINAL APPROVAL	
												MS10647 C	

Obsolete

ISSUE	ITEM	CHANGED FROM	DATE	CN. NO.	DRAFTS	CHECKER	ENG. APP.	REQ.	ITEM	PART NO.	DESCRIPTION	SYMBOL
B		REDRAWN	MAR. 25/66		RPL	(Z)	(Signature)					
C		REDIMENSIONED	MAY 4/66		GM		(Signature)					



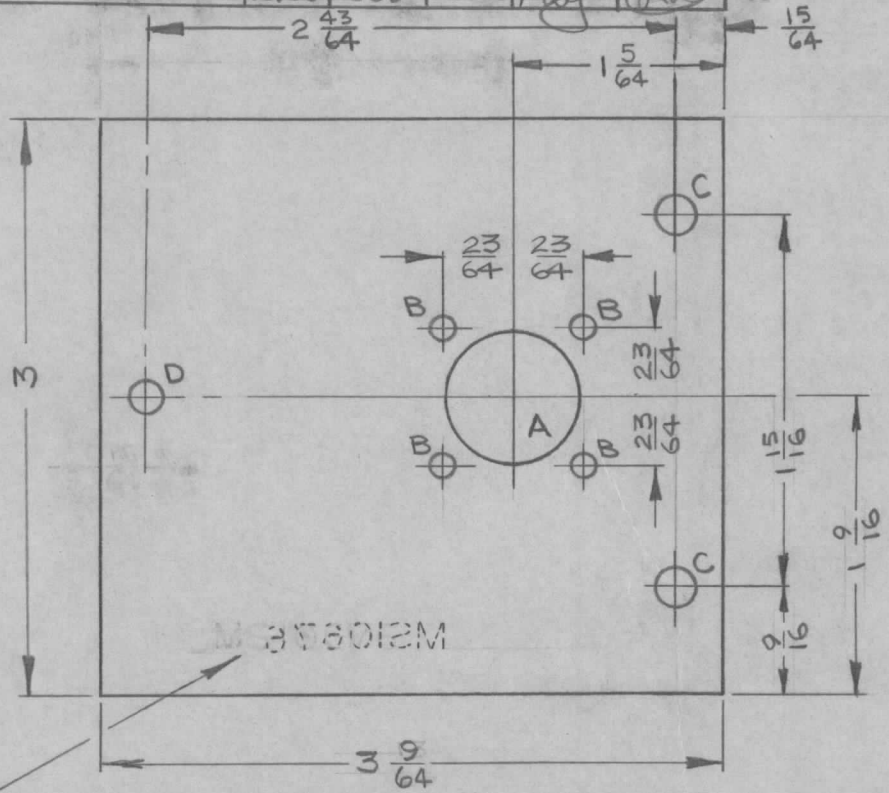
HOLES 11/64 DIA.



OBSOLETE
REPLACED BY REVISION "D"

MODEL		PROJECT NO. 005/66		DATE FEB. 22/66		STOCK SIZE .032 THK.		TMC (Canada) LIMITED OTTAWA ONTARIO			
ASS'Y. NO.		USED ON		MATERIAL PH. BRONZE		WEIGHT PER PC.		BRACKET, HOLDER OVEN			
MAXIMUM ALLOWABLE TOLERANCES HAVE BEEN DETERMINED AND DEVIATIONS WILL BE CAUSE FOR REJECTION. REMOVE ALL BURRS AND SHARP EDGES		IF IT IS FOUND DESIRABLE TO CHANGE ANY TOLERANCE OR OTHER DETAIL SPECIFIED ON THIS DRAWING NOTIFY THE PURCHASER PROMPTLY.		TYPE & TEMPER		HEAT TREAT. SPEC.		DRAWN RPL		MECH. DES. APP.	
TOLERANCES		SCALE 1:1		FINISH & SPEC. NO. S135 NICKEL PLATED		CHECKED JUTASI		ELEC. DES. APP.		FINAL APPROVAL (Signature)	
ALL OTHERS		DEC. DIM. ± .005		DIMENSIONS IN INCHES UNLESS OTHERWISE SPECIFIED		FINISH & SPEC. NO.		MS 10653		C	
		FRAC. DIM. ± 1/64		DRILL, PUNCH, COMMERCIAL STOCK SIZES AND MANUFACTURERS TOLERANCES ARE NOT INCLUDED.							
		ANGULAR DIM. ± 0° 30"									

ISSUE	ITEM	CHANGED FROM	DATE	CN. NO.	DRAFTS	CHECKER	ENG. APP.	REQ.	ITEM	PART NO.	DESCRIPTION	SYMBOL
Ø		RELEASED FOR PROD.	FEB. 28/66		RPL		<i>[Signature]</i>					
A		REDIMENSIONED	MAY 10/66	CEMN 009	GAM	<i>[Signature]</i>	<i>[Signature]</i>					



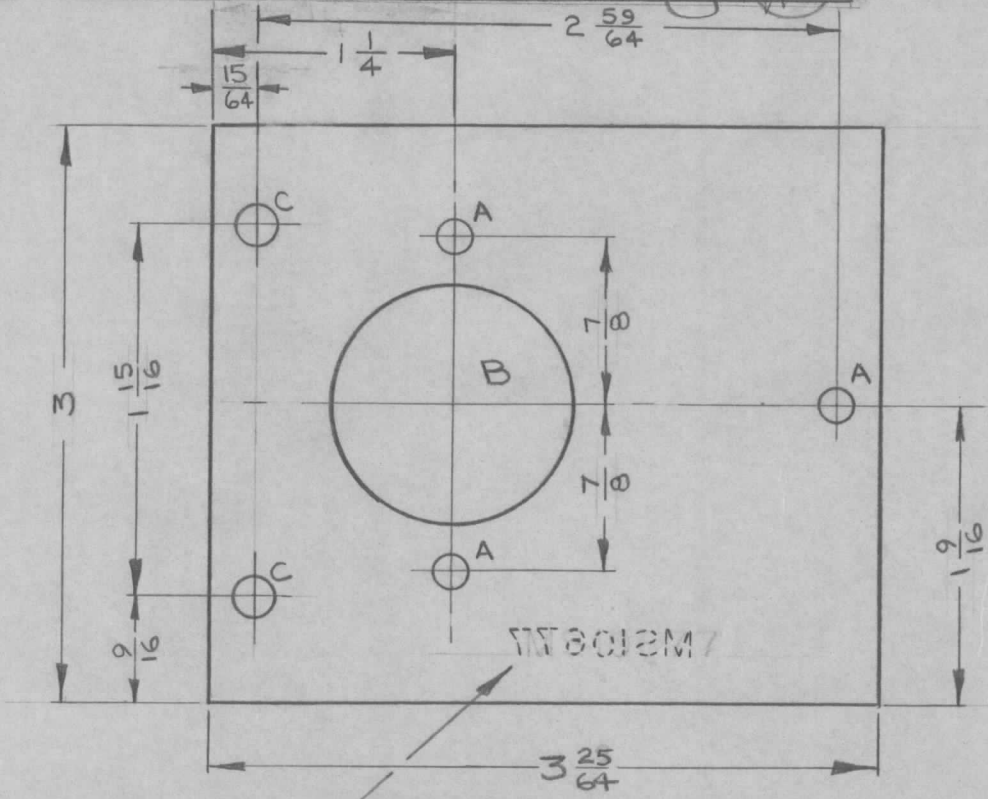
HOLE	DESCRIPTION	REQ'D
A	11/16 DIA.	1
B	1/8 DIA.	4
C	13/64 DIA.	2
D	11/64 DIA.	1

METAL STAMP TMC PART NO. 1/8 REAR SIDE
HIGH GOTHIC C/W LATEST REV. LETTER

REF: LD10208

AMC 20-20	039/66		FEB. 25/66	.064 THK.	TMC (Canada) LIMITED OTTAWA ONTARIO		
MODEL	PROJECT NO.	ASS'Y. NO.	DATE	STOCK SIZE	ANT. CONNECTOR		
USED ON				ALUM.	MOUNTING PLATE		
MAXIMUM ALLOWABLE TOLERANCES HAVE BEEN DETERMINED AND DEVIATIONS WILL BE CAUSE FOR REJECTION. REMOVE ALL BURRS AND SHARP EDGES		IF IT IS FOUND DESIRABLE TO CHANGE ANY TOLERANCE OR OTHER DETAIL SPECIFIED ON THIS DRAWING NOTIFY THE PURCHASER PROMPTLY.		MATERIAL	WEIGHT PER PC.	RPL	
TOLERANCES		SCALE 1:1		575 H32		DRAWN	ELEC. DES. APP.
ALL OTHERS	DEC. DIM. ±	DIMENSIONS IN INCHES UNLESS OTHERWISE SPECIFIED		TYPE & TEMPER		<i>[Signature]</i>	MECH. DES. APP.
	FRAC. DIM. ± 1/64	DRILL, PUNCH, COMMERCIAL STOCK SIZES AND MANUFACTURERS TOLERANCES ARE NOT INCLUDED.		HEAT TREAT. SPEC.		<i>[Signature]</i>	FINAL APPROVAL
	ANGULAR DIM. ±			S404 YELLOW IRIDITE		<i>[Signature]</i>	
				FINISH & SPEC. NO.			MS10676 A

ISSUE	ITEM	CHANGED FROM	DATE	CN. NO.	DRAFTS	CHECKER	ENG. APP.	REQ.	ITEM	PART NO.	DESCRIPTION	SYMBOL
Ø		RELEASED FOR PROD	FEB 28/66		RPL		(RD)					
A		REDIMENSIONED	MAY 10/66	CENJ 009	GAM	Reis	(RD)					



HOLE	DESCRIPTION	REQ'D
A	11/64 DIA.	3
B	1 1/4 DIA.	1
C	13/64 DIA.	2

METAL STAMP TMC PART NO. 1/8 REAR SIDE
HIGH GOTHIC C/W LATEST REV. LETTER

REF: LD10209

AMC20-20	039/66		FEB.25/66	.064 THK.	TMC (Canada) LIMITED OTTAWA ONTARIO		
MODEL	PROJECT NO.	ASS'Y. NO.	DATE	STOCK SIZE			
USED ON				ALUM	POWER RECEPTACLE		
MAXIMUM ALLOWABLE TOLERANCES HAVE BEEN DETERMINED AND DEVIATIONS WILL BE CAUSE FOR REJECTION. REMOVE ALL BURRS AND SHARP EDGES		IF IT IS FOUND DESIRABLE TO CHANGE ANY TOLERANCE OR OTHER DETAIL SPECIFIED ON THIS DRAWING NOTIFY THE PURCHASER PROMPTLY.		MATERIAL	WEIGHT PER PC.	MOUNTING PLATE	
				575 H32		RPL	
TOLERANCES		SCALE 1:1		TYPE & TEMPER	DRAWN: <i>[Signature]</i> ELEC. DES. APP. <i>[Signature]</i> MECH. DES. APP. <i>[Signature]</i>		
ALL OTHERS	DEC. DIM. ±	DIMENSIONS IN INCHES UNLESS OTHERWISE SPECIFIED DRILL, PUNCH, COMMERCIAL STOCK SIZES AND MANUFACTURERS TOLERANCES ARE NOT INCLUDED.		HEAT TREAT. SPEC.	CHECKED: <i>[Signature]</i> FINAL APPROVAL: <i>[Signature]</i> MS10677 A		
	FRAC. DIM. ± 1/64			5404			
	ANGULAR DIM. ±			YELLOW IRIDITE			
				FINISH & SPEC. NO.			