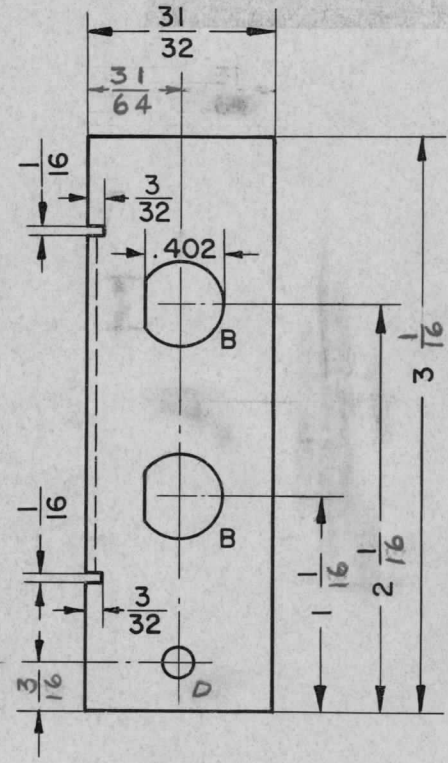
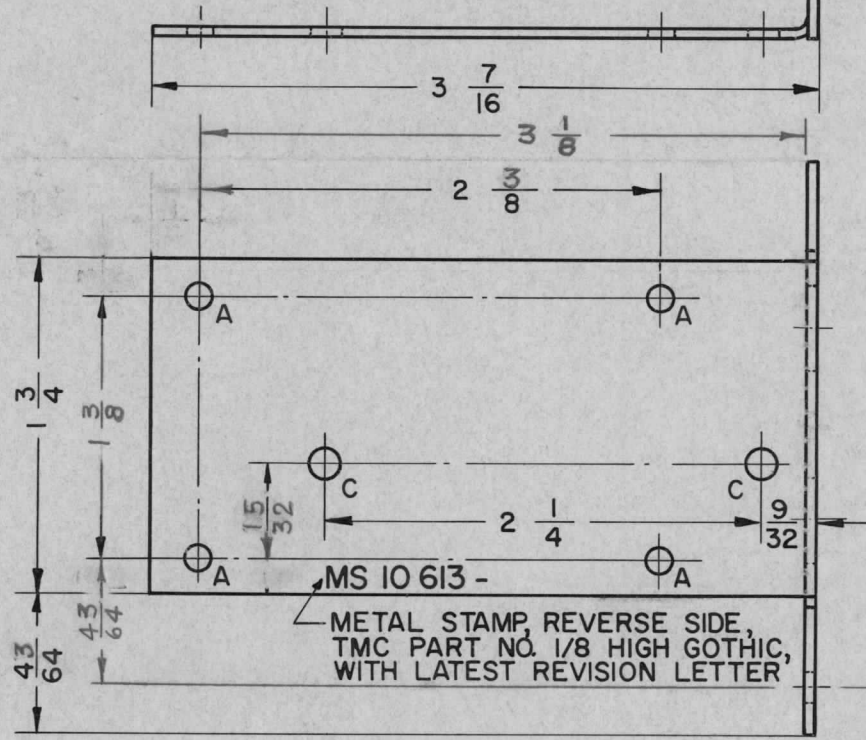


ISSUE	ITEM	CHANGED FROM	DATE	CN. NO.	DRAFTS	CHECKER	ENG. APP.	REQ.	ITEM	PART NO.	DESCRIPTION	SYMBOL
Ø		RELEASED FOR PRODUCTION	11-1-66		RD		(RP)					
A		33/64 DELETED	MAY 17/66	CENN 014	GM	(RP)	(RP)					

HOLE LEGEND
 A HOLE .189 - .194 DIA (#10 DRILL)
 B HOLE 7/16 DIA 'D-HOLE'
 C HOLE 9/64 DIA
 D HOLE 5/32 DIA



UNLESS OTHERWISE SPECIFIED:

1. USE MATERIAL THICKNESS FOR MAXIMUM RADIUS ON ALL BENDS
2. ALL ANGULAR BENDS 90 DEGREES
3. REMOVE ALL BURRS AND SHARP EDGES
4. MOUNT INSERTS AFTER FINISHING

AMC 20	020/66	A 10 384	15-11-65	.064 THK.	TMC (Canada) LIMITED OTTAWA ONTARIO		
MODEL	PROJECT NO.	ASS'Y. NO.	DATE	STOCK SIZE	MODULE CHASSIS		
USED ON				ALUMINUM			
MAXIMUM ALLOWABLE TOLERANCES HAVE BEEN DETERMINED AND DEVIATIONS WILL BE CAUSE FOR REJECTION. REMOVE ALL BURRS AND SHARP EDGES				MATERIAL	WEIGHT PER PC.		
				57S H32			
IF IT IS FOUND DESIRABLE TO CHANGE ANY TOLERANCE OR OTHER DETAIL SPECIFIED ON THIS DRAWING NOTIFY THE PURCHASER PROMPTLY.				TYPE & TEMPER	Hus.		
					ELEC. DES. APP. MECH. DES. APP.		
TOLERANCES				SCALE :	DRAWN		
ALL OTHERS DEC. DIM. ± .005 FRAC. DIM. ± 1/64 ANGULAR DIM. ± 0°30'				DIMENSIONS IN INCHES UNLESS OTHERWISE SPECIFIED	CHECKED		
					FINAL APPROVAL		
DRILL, PUNCH, COMMERCIAL STOCK SIZES AND MANUFACTURERS TOLERANCES ARE NOT INCLUDED.				HEAT TREAT. SPEC.	BEDFORD		
				S 404 YELLOW IRIDITE	MS 10 613		
				FINISH & SPEC. NO.	A		