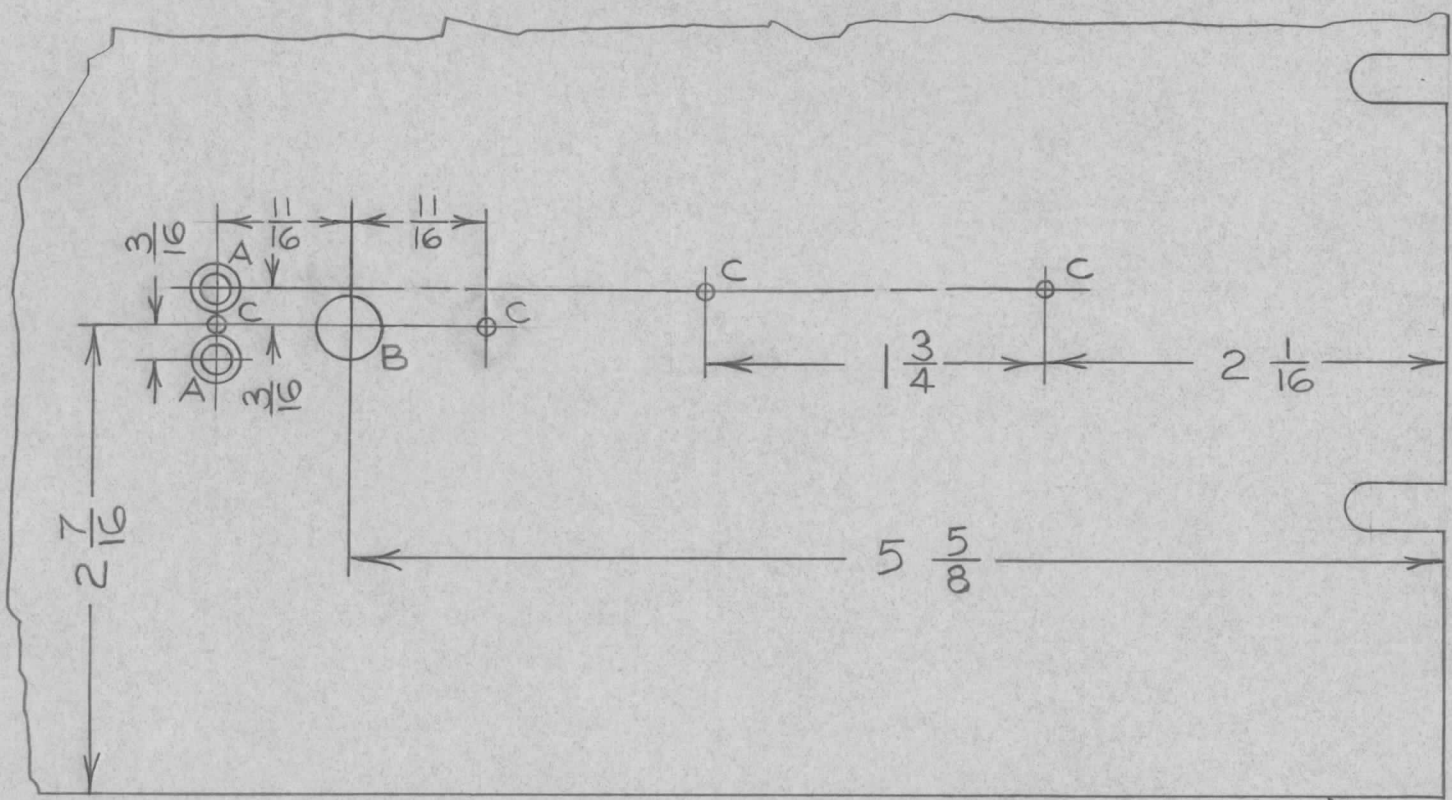


MS-10535

ISSUE	ITEM	CHANGED FROM	DATE	CN. NO.	DRAFTS	CHECKER	ENG. APP.	REQ.	ITEM	PART NO.	DESCRIPTION	SYMBOL
-------	------	--------------	------	---------	--------	---------	-----------	------	------	----------	-------------	--------



HOLE A - 9/64 DRILL & C'SK.
 HOLE B - 5/16 DIA.
 HOLE C - #47 DRILL

RIGHT SIDE OF FRONT PANEL.

BOTTOM OF FRONT PANEL

MS121 REF.

FFR-3 CODAN		E 1148 P		MAY 11/61		TMC (Canada) LIMITED OTTAWA ONTARIO							
MODEL	PROJECT NO.	ASS'Y. NO.	DATE	STOCK SIZE									
USED ON						MATERIAL	WEIGHT PER PC.	FRONT PANEL					
MAXIMUM ALLOWABLE TOLERANCES HAVE BEEN DETERMINED AND DEVIATIONS WILL BE CAUSE FOR REJECTION. REMOVE ALL BURRS AND SHARP EDGES			IF IT IS FOUND DESIRABLE TO CHANGE ANY TOLERANCE OR OTHER DETAIL SPECIFIED ON THIS DRAWING NOTIFY THE PURCHASER PROMPTLY.			FFR-3 CODAN MOD.							
						TYPE & TEMPER		J.P.C.		ELEC. DES. APP.		MECH. DES. APP.	
TOLERANCES			SCALE			HEAT TREAT. SPEC.		DRAWN		CHECKED		FINAL APPROVAL	
ALL OTHERS	DEC. DIM. ±		DIMENSIONS IN INCHES UNLESS OTHERWISE SPECIFIED			FINISH & SPEC. NO.		g.b.		M. Kr.		MS10535	
	FRAC. DIM. ±		DRILL, PUNCH, COMMERCIAL STOCK SIZES AND MANUFACTURERS TOLERANCES ARE NOT INCLUDED.										
ANGULAR DIM. ±													