

IF IT IS FOUND DESIRABLE TO CHANGE ANY TOLERANCE OR OTHER DETAIL SPECIFIED ON THIS DRAWING NOTIFY THE PURCHASER PROMPTLY.

MS10527

MAXIMUM ALLOWABLE TOLERANCES HAVE BEEN DETERMINED AND DEVIATIONS WILL BE CAUSE FOR REJECTION. REMOVE ALL BURRS AND SHARP EDGES

USED ON

MODEL

PROJECT NO.

ASS'Y. NO.

DATE

MID-1 E1147P

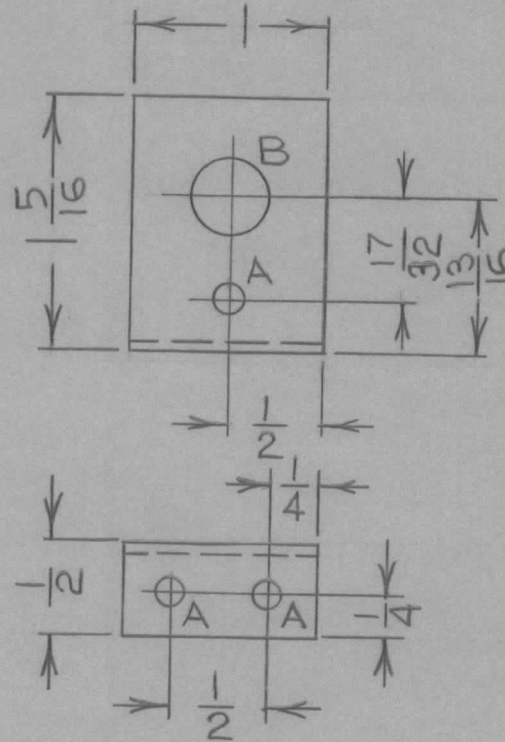
4/3/61

NOTICE TO PERSONS RECEIVING THIS DRAWING

THE TECHNICAL MATERIEL CORPORATION claims proprietary right in the material disclosed hereon. This drawing is issued in confidence for engineering information only and may not be reproduced or used to manufacture anything shown hereon without permission from THE TECHNICAL MATERIEL CORPORATION to the user. This drawing is loaned for mutual assistance and is subject to recall at any time.

Property of:

THE TECHNICAL MATERIEL CORPORATION
MAMARONECK, NEW YORK



HOLE A - 9/64 DIA.
HOLE B - 3/8 DIA.

REQ.	ITEM	PART NO.	DESCRIPTION	SYMBOL
		.064 TK.	TMC (Canada) LIMITED OTTAWA ONTARIO	
		STOCK SIZE		POTENTIOMETER
		ALUM.	MTG. BKT.	
		MATERIAL		
		WEIGHT PER PC.	JPC	
		TYPE & TEMPER	DRAWN	ELEC. DES. APP. MECH. DES. APP.
		HEAT TREAT. SPEC.	<i>M.C.</i>	
		FINISH & SPEC. NO.	CHECKED	FINAL APPROVAL
			MS10527	

ISSUE	ITEM	CHANGED FROM	DATE	CN. NO.	DRAFTS	CHECKER	ENG. APP.
TOLERANCES							
ALL OTHERS				SCALE 1:1			
DEC. DIM. ±				DIMENSIONS IN INCHES			
FRAC. DIM. ± 1/64				UNLESS OTHERWISE SPECIFIED			
ANGULAR DIM. ±				DRILL, PUNCH, COMMERCIAL STOCK			
				SIZES AND MANUFACTURERS			
				TOLERANCES ARE NOT INCLUDED.			