

IF IT IS FOUND DESIRABLE TO CHANGE ANY TOLERANCE OR OTHER DETAIL SPECIFIED ON THIS DRAWING NOTIFY THE PURCHASER PROMPTLY.

MS10488

MAXIMUM ALLOWABLE TOLERANCES HAVE BEEN DETERMINED AND DEVIATIONS WILL BE CAUSE FOR REJECTION. REMOVE ALL BURRS AND SHARP EDGES

USED ON

MODEL

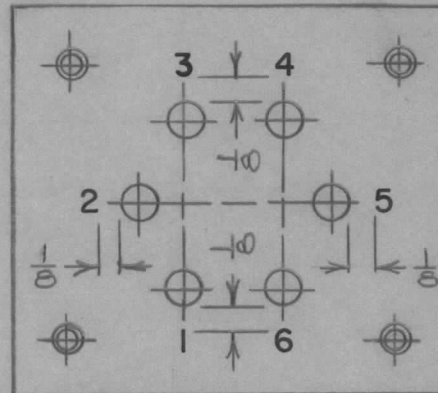
PROJECT NO.

ASS'Y. NO.

DATE

AMC 6-5

23/11/60



NOTE: STAMPING IS TO BE 1/8" HIGH.

REF - MS 10290

NOTICE TO PERSONS RECEIVING THIS DRAWING

THE TECHNICAL MATERIEL CORPORATION claims proprietary right in the material disclosed hereon. This drawing is issued in confidence for engineering information only and may not be reproduced or used to manufacture anything shown hereon without permission from THE TECHNICAL MATERIEL CORPORATION to the user. This drawing is loaned for mutual assistance and is subject to recall at any time.

Property of:

THE TECHNICAL MATERIEL CORPORATION
MAMARONECK, NEW YORK

REQ.	ITEM	PART NO.	DESCRIPTION	SYMBOL
			TMC (Canada) LIMITED OTTAWA ONTARIO	
STOCK SIZE			METAL STAMPING, BASE TRANSFORMER TRO73.	
MATERIAL WEIGHT PER PC.				
TYPE & TEMPER			JPC	
HEAT TREAT. SPEC.			DRAWN <i>[Signature]</i> ELEC. DES. APP. <i>[Signature]</i> MECH. DES. APP. <i>[Signature]</i>	
FINISH & SPEC. NO.			CHECKED <i>[Signature]</i> FINAL APPROVAL	
			MS10488	

ISSUE	ITEM	CHANGED FROM	DATE	CN. NO.	DRAFTS	CHECKER	ENG. APP.
TOLERANCES				SCALE			
ALL OTHERS				DIMENSIONS IN INCHES UNLESS OTHERWISE SPECIFIED			
				DRILL, PUNCH, COMMERCIAL STOCK SIZES AND MANUFACTURERS TOLERANCES ARE NOT INCLUDED.			