

IF IT IS FOUND DESIRABLE TO CHANGE ANY TOLERANCE OR OTHER DETAIL SPECIFIED ON THIS DRAWING NOTIFY THE PURCHASER PROMPTLY.

MS10472C

MAXIMUM ALLOWABLE TOLERANCES HAVE BEEN DETERMINED AND DEVIATIONS WILL BE CAUSE FOR REJECTION. REMOVE ALL BURRS AND SHARP EDGES

USED ON

MODEL

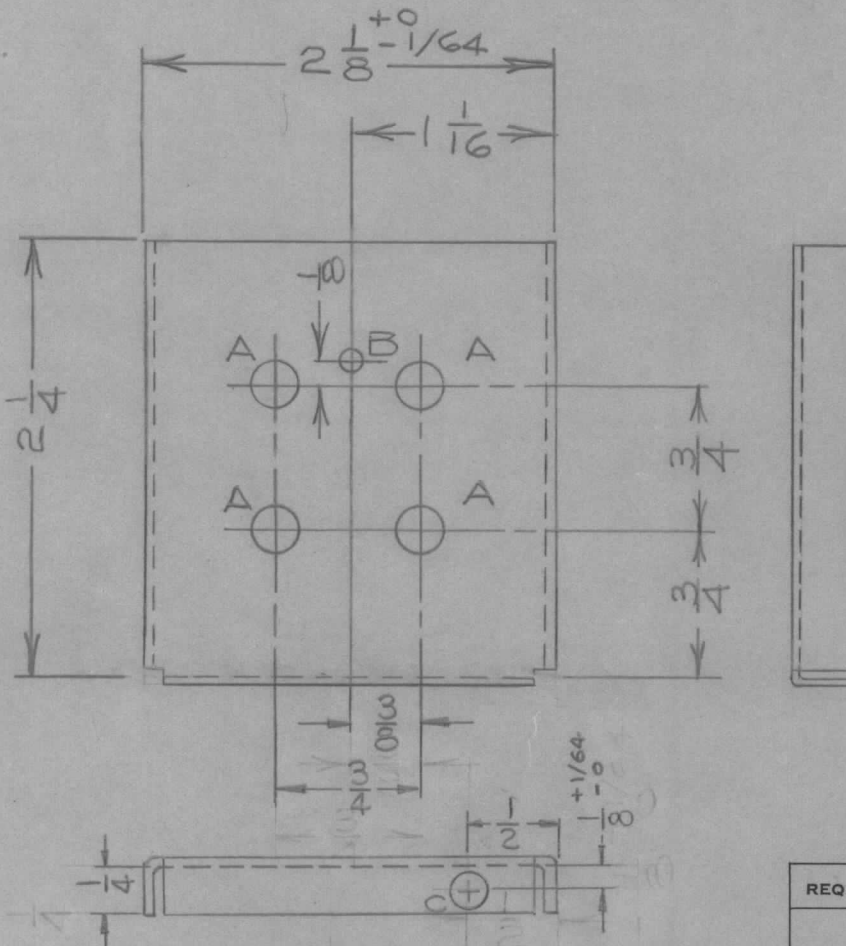
PROJECT NO.

ASS'Y. NO.

DATE

DA101 .CE5107

8/11/60



HOLE A - 9/32 DIA.
HOLE B - 5/32 DIA.
HOLE C - 3/16 DIA.

C	1	2 Lips Added On Pictorial	4-2-62	6578	J.E.	JPC	
B		.021 WAS .031. 5/32 WAS 1/8	NOV 28/60		JPC		
A		DA101 WAS LMC-10	4/11 1960		JPC		
ISSUE	ITEM	CHANGED FROM	DATE	CN. NO.	DRAFTS	CHECKER	ENG. APP.

REQ.	ITEM	PART NO.	DESCRIPTION	SYMBOL
		.021 TK. SH.	TMC (Canada) LIMITED	
		STOCK SIZE	OTTAWA ONTARIO	
		COPPER	BRACKET, MOUNTING	
		MATERIAL	FOR FILTER FX10011.	
		WEIGHT PER PC.	JPC	
		TYPE & TEMPER	DRAWN	MECH. DES. APP.
			ELEC. DES. APP.	
		HEAT TREAT. SPEC.	CHECKED	FINAL APPROVAL
		FINISH & SPEC. NO.		

TOLERANCES		SCALE 1:1
ALL OTHERS	DEC. DIM. ± FRAC. DIM. ± 1/64 ANGULAR DIM. ±	DIMENSIONS IN INCHES UNLESS OTHERWISE SPECIFIED DRILL, PUNCH, COMMERCIAL STOCK SIZES AND MANUFACTURERS TOLERANCES ARE NOT INCLUDED.

MS10472 C