

IF IT IS FOUND DESIRABLE TO CHANGE ANY TOLERANCE OR OTHER DETAIL SPECIFIED ON THIS DRAWING NOTIFY THE PURCHASER PROMPTLY.

MS10451

MAXIMUM ALLOWABLE TOLERANCES HAVE BEEN DETERMINED AND DEVIATIONS WILL BE CAUSE FOR REJECTION. REMOVE ALL BURRS AND SHARP EDGES

USED ON

MODEL

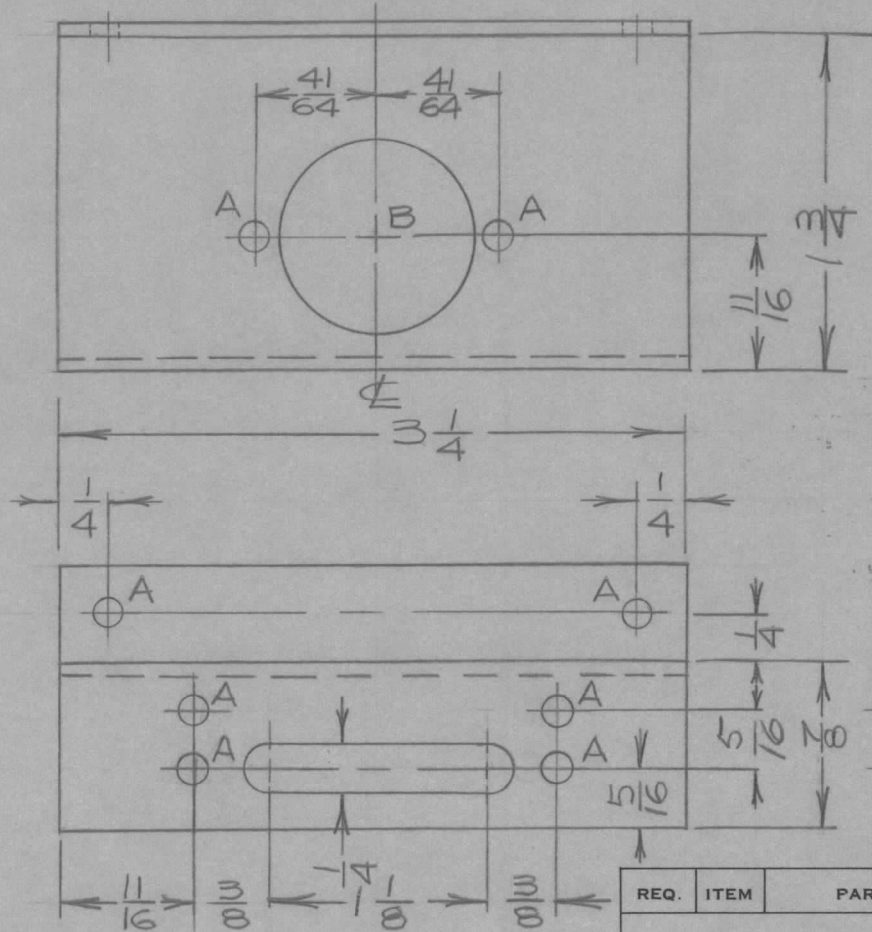
PROJECT NO.

ASS'Y. NO.

DATE

GPR-90# MOD. CAN. 2
GPR-90-RX.

APRIL 19/60



HOLE A = 5/32 DIA.
HOLE B = 1 DIA.

REQ.	ITEM	PART NO.	DESCRIPTION	SYMBOL
	16 GA.		TMC (Canada) LIMITED OTTAWA ONTARIO	
	STOCK SIZE		AUDIO TRANSFORMER	
	ALUM.		MOUNTING BKT.	
	MATERIAL	WEIGHT PER PC.	JPC	R.W. Thomas
	TYPE & TEMPER		DRAWN	ELEC. DES. APP. MECH. DES. APP.
	HEAT TREAT. SPEC.		CHECKED	FINAL APPROVAL
	ETCH & IRIDITE			MS10451
	FINISH & SPEC. NO.			

ISSUE	ITEM	CHANGED FROM	DATE	CN. NO.	DRAFTS	CHECKER	ENG. APP.
TOLERANCES		SCALE 1:1					
ALL OTHERS		DEC. DIM. ±	DIMENSIONS IN INCHES UNLESS OTHERWISE SPECIFIED				
		FRAC. DIM. ± 1/64	DRILL. PUNCH, COMMERCIAL STOCK SIZES AND MANUFACTURERS TOLERANCES ARE NOT INCLUDED.				
		ANGULAR DIM. ±					