

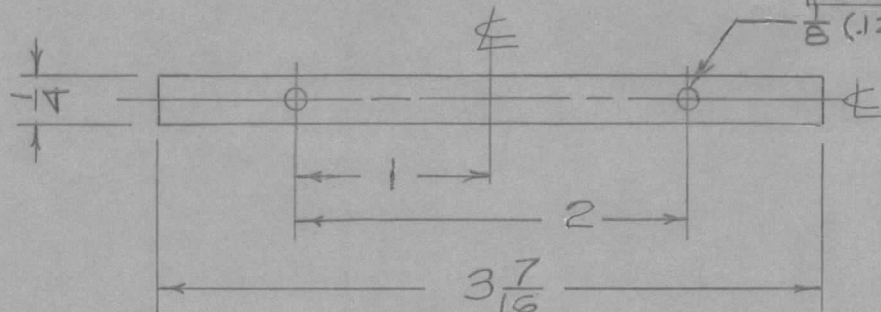
IF IT IS FOUND DESIRABLE TO CHANGE ANY TOLERANCE OR OTHER DETAIL SPECIFIED ON THIS DRAWING NOTIFY THE PURCHASER PROMPTLY.

MS10429 C

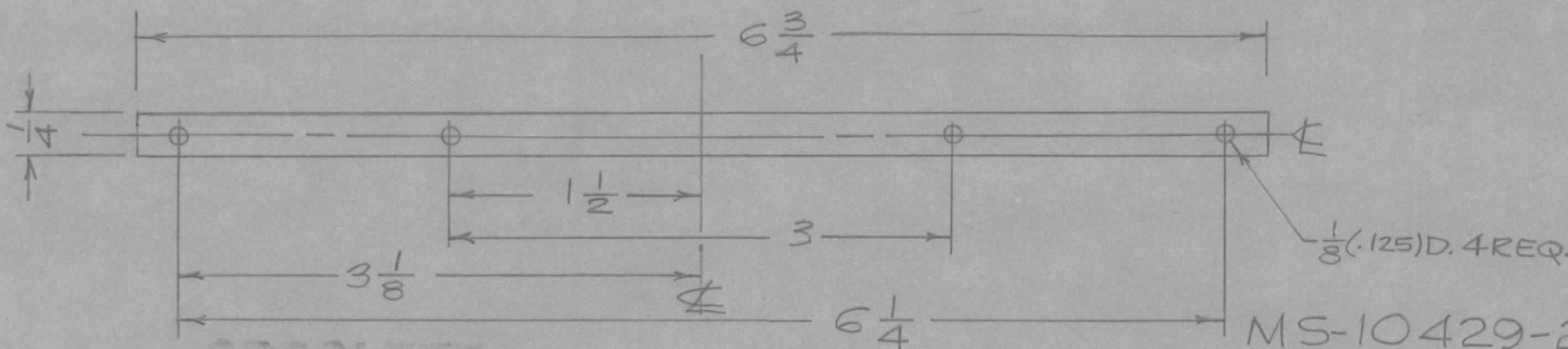
MAXIMUM ALLOWABLE TOLERANCES HAVE BEEN DETERMINED AND DEVIATIONS WILL BE CAUSE FOR REJECTION. REMOVE ALL BURRS AND SHARP EDGES

USED ON

| MODEL | PROJECT NO. | ASS'Y. NO. | DATE |
|-------|-------------|------------|---------|
| RFA-1 | CE1095 | | 8/23/60 |



MS-10429-1



MS-10429-2

OBSOLETE
NO LONGER USED

| REQ. | ITEM | PART NO. | DESCRIPTION | SYMBOL |
|------|------|----------------------------------|--|-----------------|
| | | .051TK. | TMC (Canada) LIMITED OTTAWA ONTARIO | |
| | | STOCK SIZE | | |
| | | ALUM. | STRAP, SCREEN RETAINING | |
| | | MATERIAL WEIGHT PER PC. | | |
| | | 5052-H32 | JPC | KA |
| | | TYPE & TEMPER | DRAWN | ELEC. DES. APP. |
| | | HEAT TREAT. SPEC. | MECH. DES. APP. | |
| | | S101 CAUSTIC DIP S404 IRIDITE | CHECKED | FINAL APPROVAL |
| | | FINISH & SPEC. NO. | MS10429 C | |

| ISSUE | ITEM | CHANGED FROM | DATE | CN. NO. | DRAFTS | CHECKER | ENG. APP. |
|-------|------|-----------------------|---------|---------|--------|---------|-----------|
| C | 1 | OBSOLETE NOTE DELETED | 12-6-62 | 7820 | EX | JPC | JPC |
| B | 1 | NO LONGER USED | 9-4-62 | 7176 | ES. | JPC | JPC |
| A | 1 | MS10429 WAS MS1274A | 8-23-60 | | | JPC | JPC |

| TOLERANCES | | | SCALE 1:1 |
|------------|----------------|------|---|
| ALL OTHERS | DEC. DIM. ± | | DIMENSIONS IN INCHES UNLESS OTHERWISE SPECIFIED |
| | FRAC. DIM. ± | 1/64 | DRILL, PUNCH, COMMERCIAL STOCK SIZES AND MANUFACTURERS TOLERANCES ARE NOT INCLUDED. |
| | ANGULAR DIM. ± | | |