

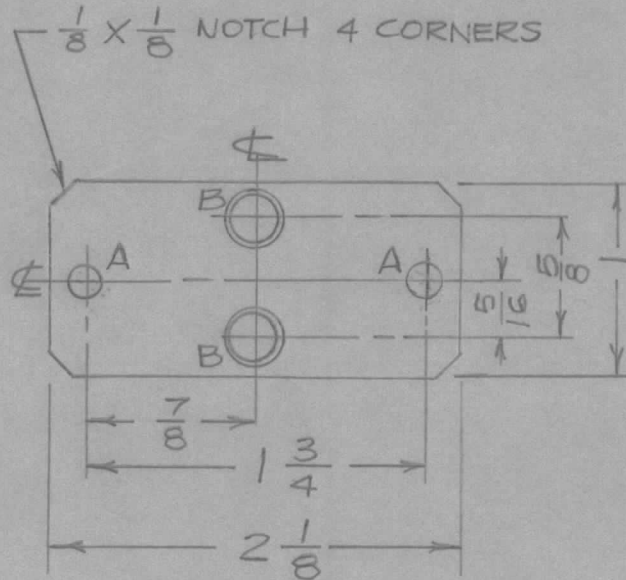
IF IT IS FOUND DESIRABLE TO CHANGE ANY TOLERANCE OR OTHER DETAIL SPECIFIED ON THIS DRAWING NOTIFY THE PURCHASER PROMPTLY.

MS10427A

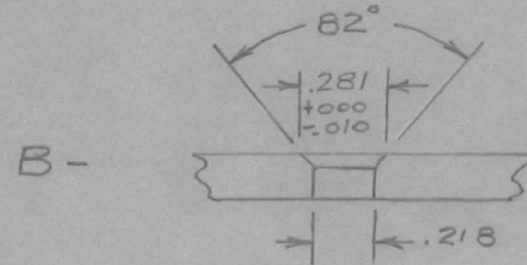
MAXIMUM ALLOWABLE TOLERANCES HAVE BEEN DETERMINED AND DEVIATIONS WILL BE CAUSE FOR REJECTION. REMOVE ALL BURRS AND SHARP EDGES

USED ON

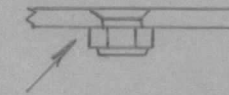
MODEL	PROJECT NO.	ASS'Y. NO.	DATE
RFA-1	CE1095		8/16/60



A - 1 3/64 (.203) D.



B -



MOUNT SM-111-D-206 IN "B" HOLES AS SHOWN.

REQ.	ITEM	PART NO.	DESCRIPTION	SYMBOL
		.081TK.	TMC (Canada) LIMITED OTTAWA ONTARIO	
		STOCK SIZE		
		ALUM.	PLATE, TUBE CLAMP	
		MATERIAL	WTG. PER PC.	
		5052-H32	MTG.	
		TYPE & TEMPER	JPC	KA
			DRAWN	ELEC. DES. APP. MECH. DES. APP.
			<i>[Signature]</i>	<i>[Signature]</i>
		HEAT TREAT. SPEC.	CHECKED	FINAL APPROVAL
		S101 CAUSTIC DIP S404 IRIDITE		
		FINISH & SPEC. NO.		
			MS10427	A

ISSUE	ITEM	CHANGED FROM	DATE	CN. NO.	DRAFTS	CHECKER	ENG. APP.
A		MS10427 WAS MS1270A	8/16/60		JPC	KA	KA

TOLERANCES	SCALE
DEC. DIM. ± FRAC. DIM. ± 1/64 ANGULAR DIM. ±	1:1

DIMENSIONS IN INCHES UNLESS OTHERWISE SPECIFIED
DRILL, PUNCH, COMMERCIAL STOCK SIZES AND MANUFACTURERS TOLERANCES ARE NOT INCLUDED.