

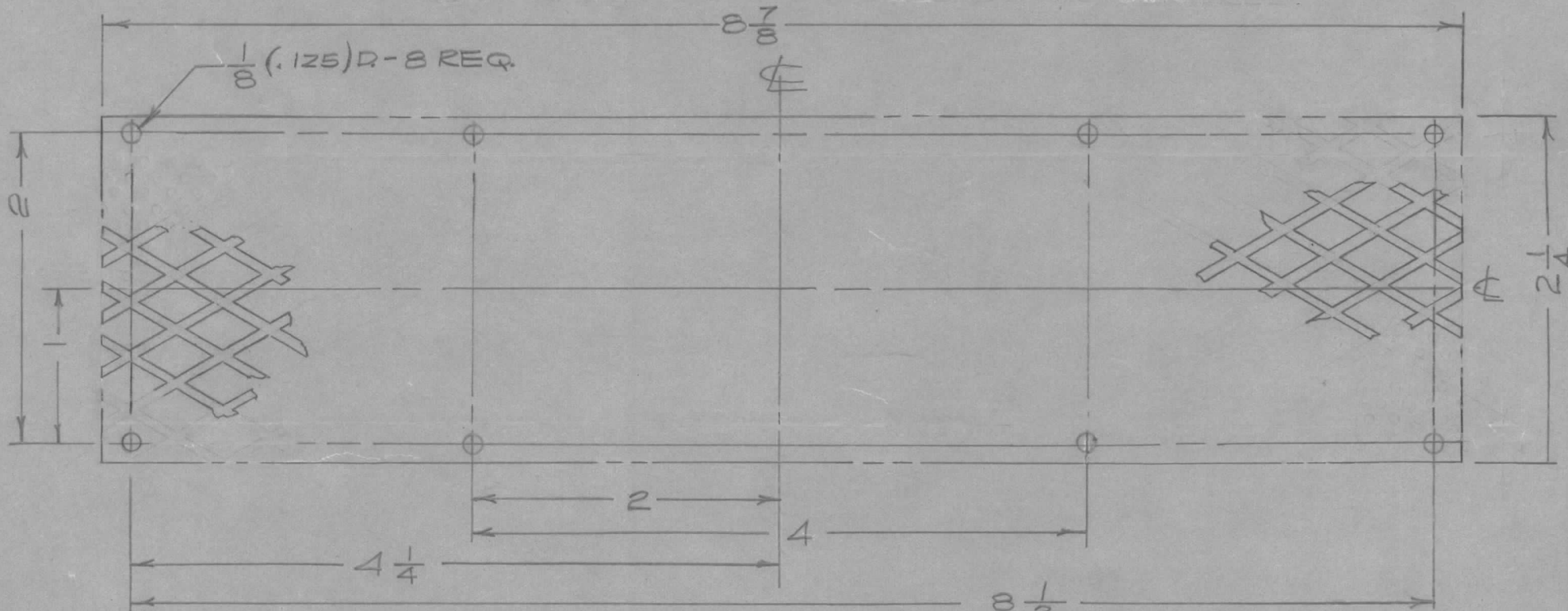
IF IT IS FOUND DESIRABLE TO CHANGE ANY TOLERANCE OR OTHER DETAIL SPECIFIED ON THIS DRAWING NOTIFY THE PURCHASER PROMPTLY.

MS10421B

MAXIMUM ALLOWABLE TOLERANCES HAVE BEEN DETERMINED AND DEVIATIONS WILL BE CAUSE FOR REJECTION. REMOVE ALL BURRS AND SHARP EDGES

USED ON

MODEL	PROJECT NO.	ASS'Y. NO.	DATE
RFA-1	CE1095		8/24/60



NOTE:

MATERIAL - .032 FLATTENED EXPANDED ALUMINUM, 3/8 X 3/16

REQ.	ITEM	PART NO.	DESCRIPTION	SYMBOL
		SEE NOTE	TMC (Canada) LIMITED OTTAWA ONTARIO	
		STOCK SIZE		
		SEE NOTE	VENT, RIGHT SIDE, WRAPAROUND.	
		MATERIAL		
		5052-H32	JPC	KA
		TYPE & TEMPER	DRAWN	ELEC. DES. APP.
		HEAT TREAT. SPEC.	MECH. DES. APP.	
		S101 CAUSTIC DIP	CHECKED	
		S404 IRIDITE	FINAL APPROVAL	
		FINISH & SPEC. NO.	MS10421B	

B	PERFORATION NOTE REF DWG DELETED	2367	17785	440	JPC	KA	
A	MS10421 WAS MS1260	8/24/60		JPC	KA	KA	
ISSUE	ITEM	CHANGED FROM	DATE	CN. NO.	DRAFTS	CHECKER	ENG. APP.

TOLERANCES

SCALE 1:1

DIMENSIONS IN INCHES
UNLESS OTHERWISE SPECIFIED
DRILL, PUNCH, COMMERCIAL STOCK
SIZES AND MANUFACTURERS
TOLERANCES ARE NOT INCLUDED.

ALL OTHERS
DEC. DIM. ±
FRAC. DIM. ± 1/64
ANGULAR DIM. ±