

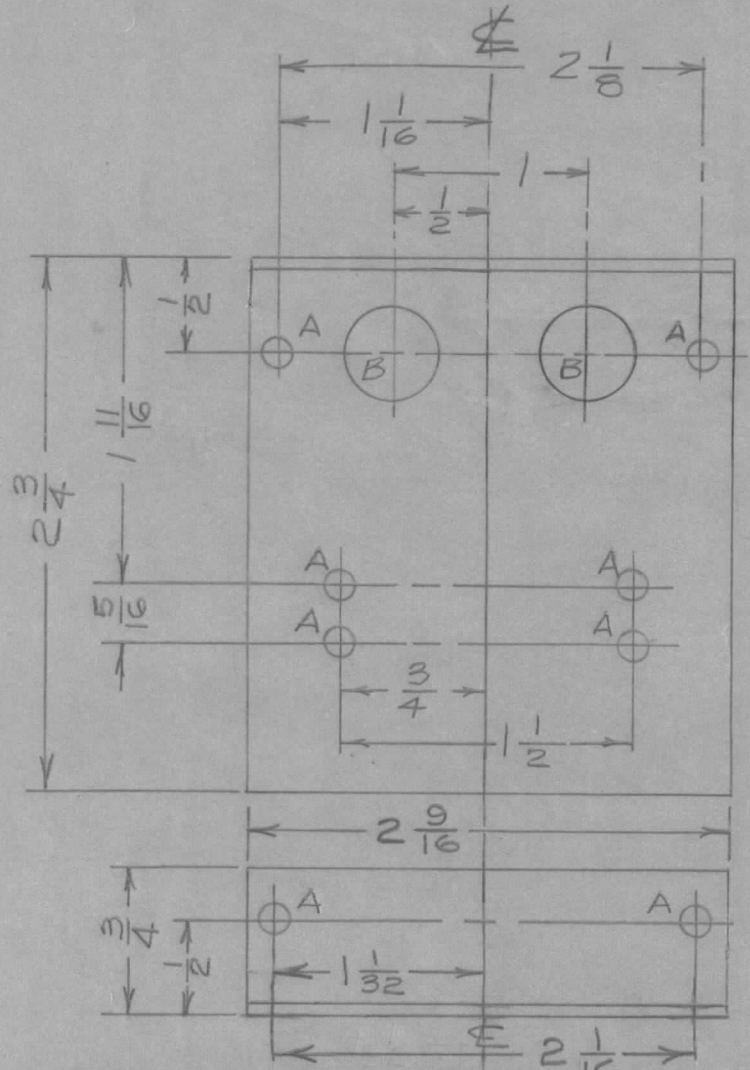
IF IT IS FOUND DESIRABLE TO CHANGE ANY TOLERANCE OR OTHER DETAIL SPECIFIED ON THIS DRAWING NOTIFY THE PURCHASER PROMPTLY.

MS10408B

MAXIMUM ALLOWABLE TOLERANCES HAVE BEEN DETERMINED AND DEVIATIONS WILL BE CAUSE FOR REJECTION. REMOVE ALL BURRS AND SHARP EDGES

USED ON

MODEL	PROJECT NO.	ASS'Y. NO.	DATE
RFA-1	CE1095		8/12/60



A - 1/64 (.171) D.
B - 1/2 (.500) D.

REF: SILKSCREENING LD10097

REQ.	ITEM	PART NO.	DESCRIPTION	SYMBOL
		.064 TK.	TMC (Canada) LIMITED OTTAWA ONTARIO	
		STOCK SIZE		
		ALUM.	BRACKET TERMINAL	
		MATERIAL	WEIGHT PER PC.	
		5052-H32	STRIP MTG.	
		TYPE & TEMPER	JPC	
		DRAWN	ELEC. DES. APP.	MECH. DES. APP.
		CHECKED	FINAL APPROVAL	
		HEAT TREAT. SPEC.	MS10408 B	
		5101 CAUSTIC DIP S404 IRIDITE		
		FINISH & SPEC. NO.		

B	CORRECTED	2/22/61	JPC	JPC	KCA		
A	MS10408 WAS MS1246C	8/15/60	JPC	JPC	KCA		
ISSUE	ITEM	CHANGED FROM	DATE	CN. NO.	DRAFTS	CHECKER	ENG. APP.
TOLERANCES			SCALE 1:1				
ALL OTHERS	DEC. DIM. ±		DIMENSIONS IN INCHES UNLESS OTHERWISE SPECIFIED				
	FRAC. DIM. ± 1/64		DRILL, PUNCH, COMMERCIAL STOCK SIZES AND MANUFACTURERS TOLERANCES ARE NOT INCLUDED.				
	ANGULAR DIM. ±						