

IF IT IS FOUND DESIRABLE TO CHANGE ANY TOLERANCE OR OTHER DETAIL SPECIFIED ON THIS DRAWING NOTIFY THE PURCHASER PROMPTLY.

MS10406 B

MAXIMUM ALLOWABLE TOLERANCES HAVE BEEN DETERMINED AND DEVIATIONS WILL BE CAUSE FOR REJECTION. REMOVE ALL BURRS AND SHARP EDGES

USED ON

MODEL

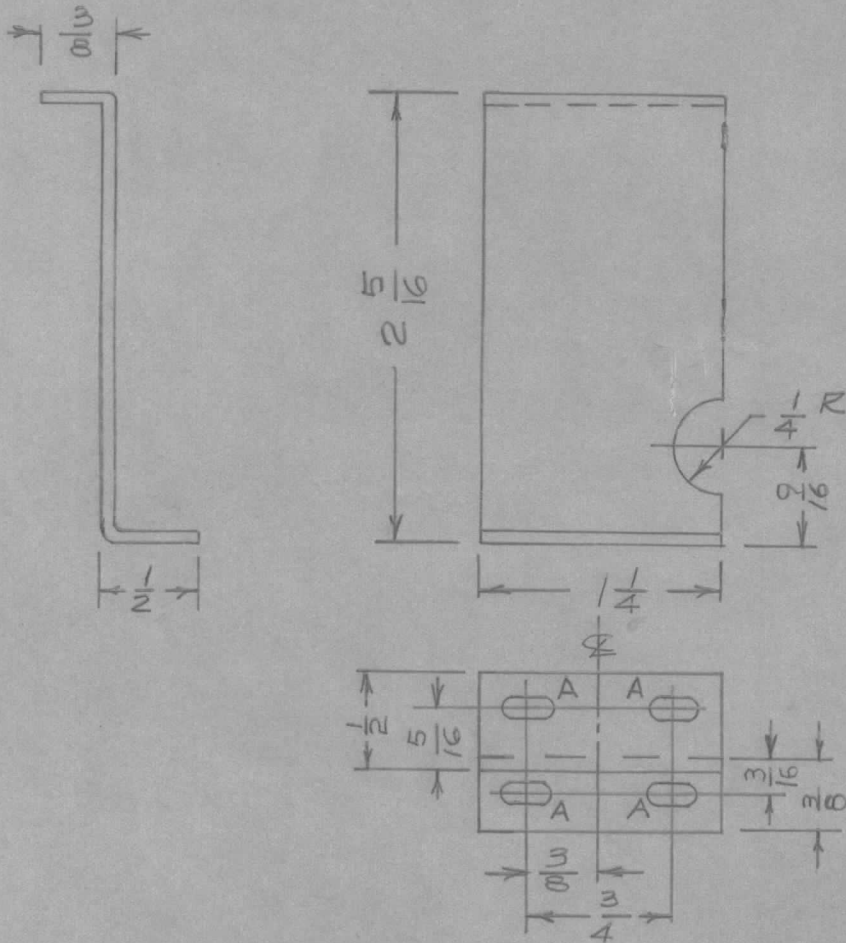
PROJECT NO.

ASS'Y. NO.

DATE

RFA-1 CE1095

8/12/60



A- 1/8 X 1/4 SLOT.

| REQ. | ITEM | PART NO. | DESCRIPTION | SYMBOL |
|------|------|----------------------------------|----------------------------------------|-----------------|
| | | .064TK. | TMC (Canada) LIMITED OTTAWA ONTARIO | |
| | | STOCK SIZE | | |
| | | ALUM. | BRACKET CONNECTOR | |
| | | MATERIAL | MTG. | |
| | | WEIGHT PER PC. | | |
| | | 5052-H32 | JPC | KA |
| | | TYPE & TEMPER | DRAWN | ELEC. DES. APP. |
| | | | MECH. DES. APP. | |
| | | HEAT TREAT. SPEC. | CHECKED | FINAL APPROVAL |
| | | S101 CAUSTIC DIP S404 IRIDITE | | |
| | | FINISH & SPEC. NO. | | |

| B | 9/16 DIM WAS 1/2 | 2.3.67 | 17785 | 4th | QC/S | PB | |
|-------|---------------------|--------------|-------|---------|--------|---------|-----------|
| A | MS10406 WAS MS1244A | 8/15/60 | | JPC | GMS | KA | |
| ISSUE | ITEM | CHANGED FROM | DATE | CN. NO. | DRAFTS | CHECKER | ENG. APP. |

| TOLERANCES | | SCALE 1:1 |
|------------|-------------------|-------------------------------------------------------------------------------------|
| ALL OTHERS | DEC. DIM. ± | DIMENSIONS IN INCHES UNLESS OTHERWISE SPECIFIED |
| | FRAC. DIM. ± 1/64 | |
| | ANGULAR DIM. ± | |
| | | DRILL, PUNCH, COMMERCIAL STOCK SIZES AND MANUFACTURERS TOLERANCES ARE NOT INCLUDED. |