

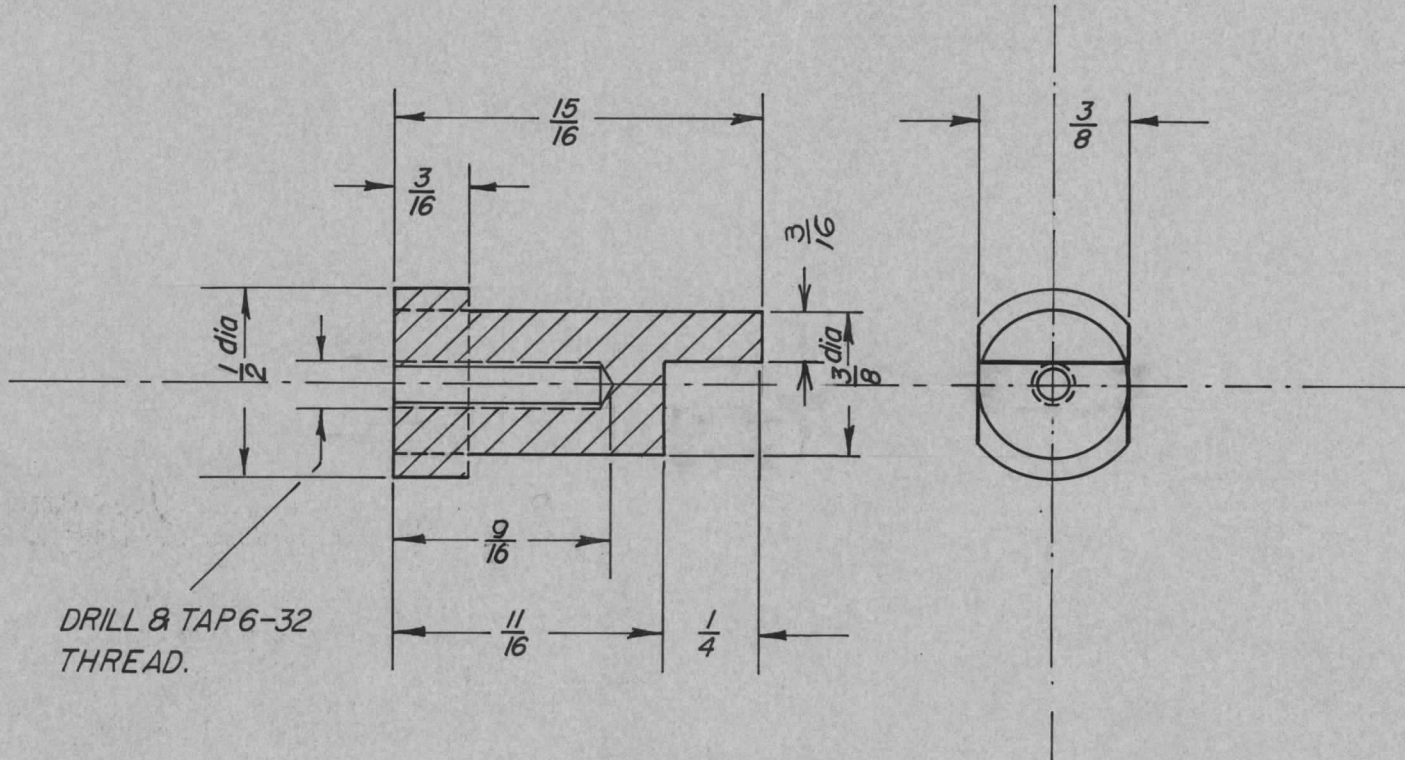
IF IT IS FOUND DESIRABLE TO CHANGE ANY TOLERANCE OR OTHER DETAIL SPECIFIED ON THIS DRAWING NOTIFY THE PURCHASER PROMPTLY.

MS-10327

MAXIMUM ALLOWABLE TOLERANCES HAVE BEEN DETERMINED AND DEVIATIONS WILL BE CAUSE FOR REJECTION. REMOVE ALL BURRS AND SHARP EDGES

USED ON

MODEL	PROJECT NO.	ASS'Y. NO.	DATE
GPT 750		A-10218	May 15/59



DRILL & TAP 6-32
THREAD.

REQ.	ITEM	PART NO.	DESCRIPTION	SYMBOL
	1/2 DIA		TMC (Canada) LIMITED OTTAWA ONTARIO	
	STOCK SIZE			
	BRASS		TERMINAL	
	MATERIAL	WEIGHT PER PC.	GROUNDING HOOK GPT 750	
	TYPE & TEMPER		<i>M. Puler</i> <i>M. Ver.</i> <i>M. Ver.</i>	
			DRAWN ELEC. DES. APP. MECH. DES. APP.	
			<i>WCM</i> <i>Jue</i>	
	HEAT TREAT. SPEC.		CHECKED FINAL APPROVAL	
	BRIGHT NICKEL			
	FINISH & SPEC. NO.			MS-10327

ISSUE	ITEM	CHANGED FROM	DATE	CN. NO.	DRAFTS	CHECKER	ENG. APP.
TOLERANCES			SCALE 2:1				
ALL OTHERS	DEC. DIM. ± FRAC. DIM. ± 1/64 ANGULAR DIM. ±		DRILL, PUNCH, COMMERCIAL STOCK SIZES AND MANUFACTURERS TOLERANCES ARE NOT INCLUDED.				