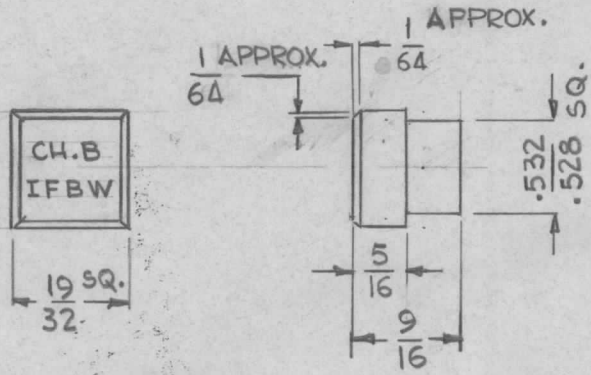


SPECIFICATIONS

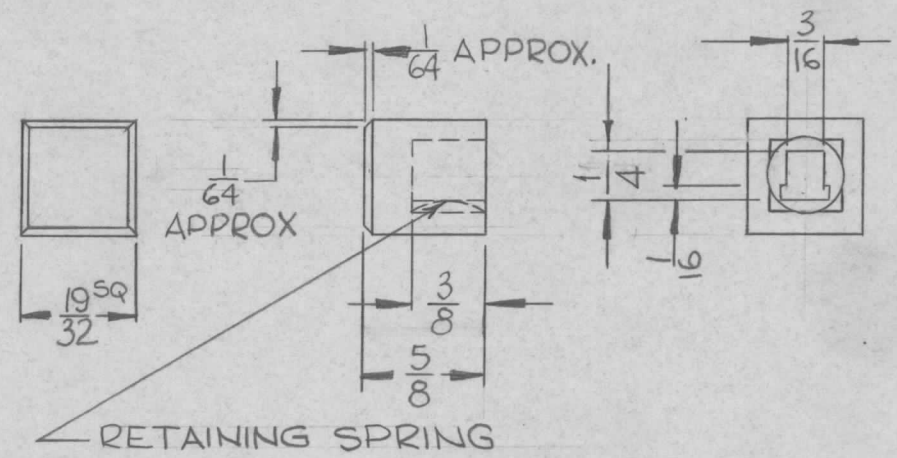
COLOR: WHITE
 TRANSMITTANCE: TRANSLUCENT
 NON-ROTATING: YES
 RETENTION: SEE NOTE 1 & 2
 MAXIMUM TEMPERATURE: 130°F (54.5°C)
 ENGRAVING: HORIZ. (AS SHOWN) 3/32 HIGH
 BLACK GOTHIC
 USED FOR SPARE PARTS OF PUSH BUTTON
 ROW SWITCHES.



TYPE 1

NOTE 1
 RETENTION = SNAP-IN

REQ. PER UNIT	USED ON			LI-111	B
	MODEL	ASS'Y. NO.	DATE		
			6-15-65		



RETAINING SPRING

NOTE 2
 RETENTION: FRICTION FIT
 TYPE 2

TMC PART NUMBER SHALL BE IN THE FOLLOWING FORM:

LI 111-1 - CH. B / IFBW

BASIC PART NO.	TYPE	ENGRAVING
		(SLASH INDICATES THE BEGINNING OF ANOTHER LINE AS SHOWN)

ENGRAVING REF: MIL-STD-12 (AS APPLICABLE)

REQ. ITEM	PART NO.	EATON	DESCRIPTION	SYMBOL		
B	MFG CODE No. WAS-378	12.2.66	CC	WFO	QC/B	
A	NOTES ADDED, TYPE 2 ADDED, TITLE CLARIFIED	5-2-66	16195	WFO	QC/B	
Ø	ORIGINAL RELEASE FOR PRODUCTION	6-17-65	—	JC		
SYM	DESCRIPTION	DATE	CH. NO.	DRAFTS	CHECKER	ENG. APP.
UNLESS OTHERWISE SPECIFIED DIMENSIONS ARE IN INCHES AND INCLUDE CHEMICALLY APPLIED OR PLATED FINISHES		SCALE		1:1		
DECIMALS .X ± .05 .XX ± .01 .XXX ± .004	TOLERANCES	FRACTIONS ± 1/64 ANGLES ± 0° 30'	CODE	S401-365		
STOCK SIZE		ACRYLIC PLASTIC		THE TECHNICAL MATERIEL CORP. MAMARONECK, NEW YORK		
MATERIAL		G-D.L		LENS, INDICATOR, ENGRAVED		
TYPE & TEMPER		HEAT TREAT. SPEC.		DRAWN		
FINISH & SPEC. NO.		ELEC. DES. APP.		MECH. DES. APP.		
		QC 6-17-65		LI-111		
				B		