

5

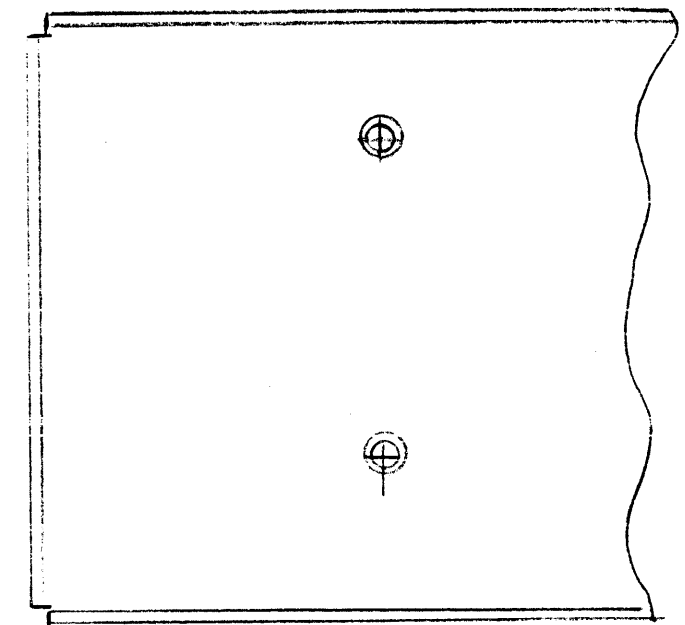
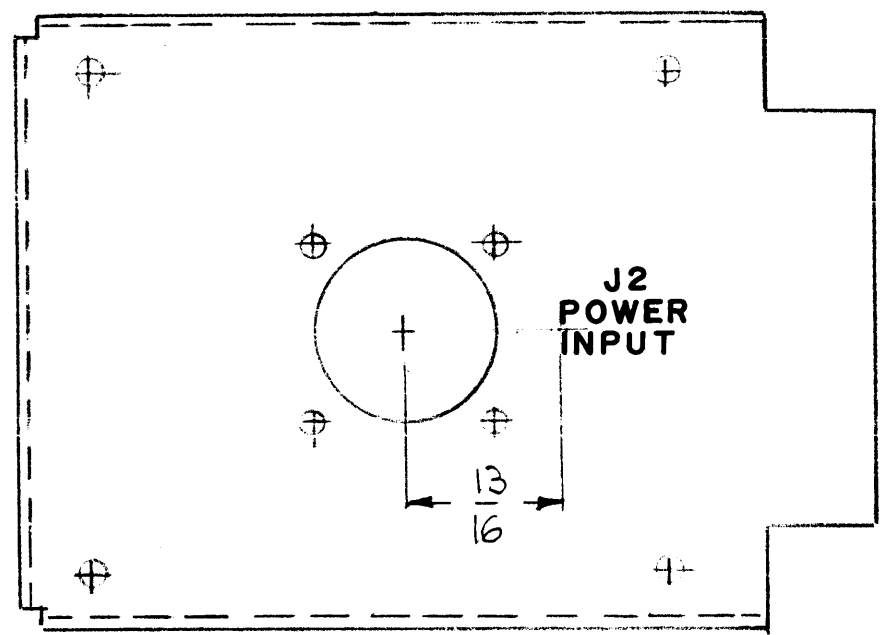
4

3

2

1

REVISIONS						
E.M.N. NO.	DRAFT	CHKD	ZONE	LTR	DESCRIPTION	DATE
		<i>dw</i>		<i>Ø</i>	ORIGINAL RELEASE	5-6-80



MARKING PROCESS: AS PER TMC SPECIFICATION S727
 LETTERING: 1/8 HIGH BLACK GOTHIC, LOCATED AS SHOWN

1	AMC-21C	
QTY / UNIT	MODEL USED ON	ASS'Y NO.
APPLICATION		
	CODE	
NOTICE TO PERSONS RECEIVING THIS DRAWING THE TECHNICAL MATERIEL CORPORATION claims proprietary right in the material disclosed hereon. This drawing is issued in confidence for engineering information only and may not be reproduced or used to manufacture anything shown hereon without permission from THE TECHNICAL MATERIEL CORPORATION to the user. This drawing is loaned for mutual assistance and is subject to recall at any time.		

REF: MS7020		UNLESS OTHERWISE SPECIFIED DIMENSIONS ARE IN INCHES AND INCLUDE CHEMICALLY APPLIED OR PLATED FINISHES		FINAL APPROVAL <i>DB</i> DATE <i>7/9/80</i>		MECH. DES. DATE		ELECT. DES. DATE		CHECKED DATE		DRAWN <i>G.D.L</i> DATE <i>1-12-80</i>		REQ'D		ITEM		PART NUMBER		DESCRIPTION		SYM.	
LIST OF MATERIAL																							
THE TECHNICAL MATERIEL CORP. MAMARONECK, NEW YORK																							
MARKING, RIGHT SIDE PLATE																							
SIZE		CODE IDENT. NO.		DWG NO.		ISSUE		SCALE		SHEET		OF		B		82679		LD 3125		Ø			

5

4

3

2

1