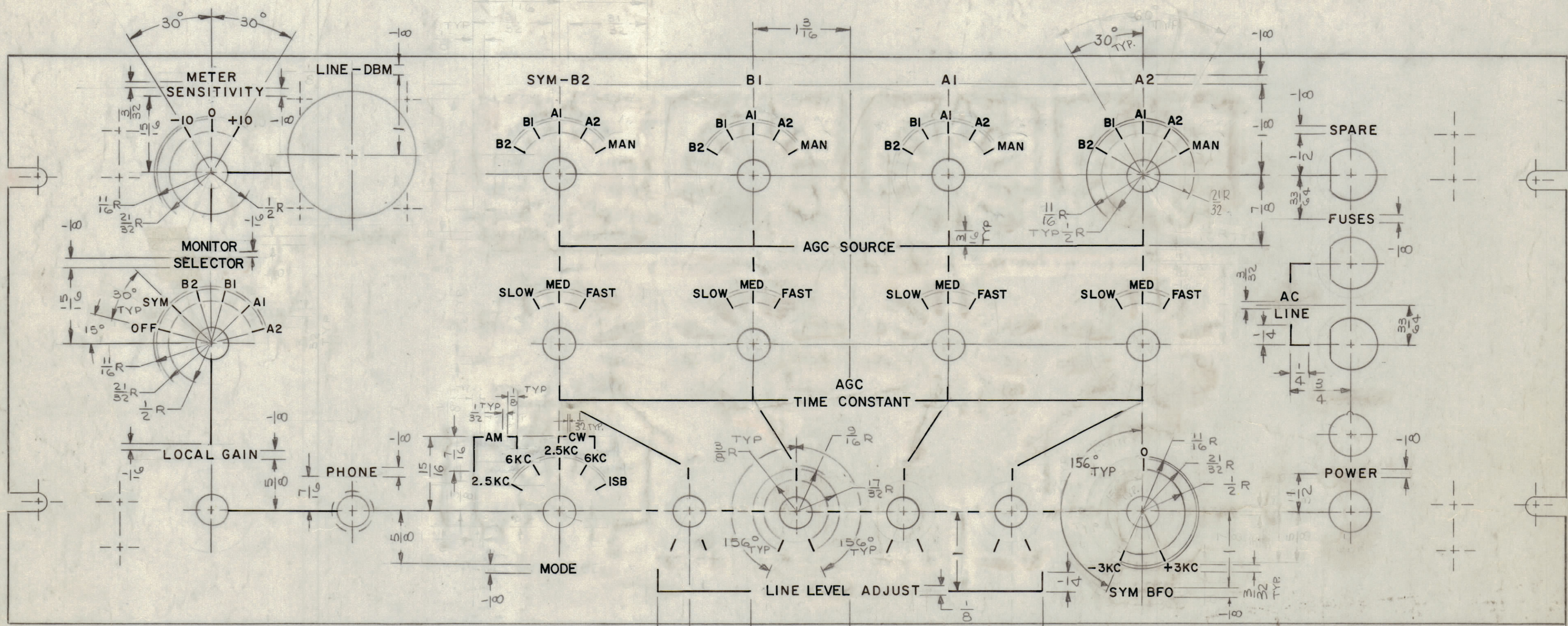


REVISIONS						
ZONE	LTR	DESCRIPTION	DATE	E.M.N.NO	DRAFT	CHKD APPD
	X2	COMPLETELY REVISED	7-11-67		LAK	
	X3	SEE SHEET 1 OF 2	11/6/68		L.H.	
	Ø	ORIGINAL RELEASE FOR PRODUCTION	11/8/68	Ø	HG	JL



HEIGHT OF LETTERS	DEPTH OF LETTERS	WIDTH OF LETTERS
1/8	.010	.020
3/32	.010	.015
LINES	.010	.015

-UNLESS OTHERWISE SPECIFIED -
 1-ENGRAVING AS PER TMC SPEC S566.
 2-ALL LETTERING & LINES TO BE WHITE FILLED.
 3-ALL LETTER GROUPS TO BE CENTERED ON HOLES.

REF: MS 5327

1	MSAR-4	
QTY / UNIT	MODEL USED ON	ASS'Y NO.
APPLICATION		
	CODE	

NOTICE TO PERSONS RECEIVING THIS DRAWING
 THE TECHNICAL MATERIEL CORPORATION claims proprietary right in the material disclosed hereon. This drawing is issued in confidence for engineering information only and may not be reproduced or used to manufacture anything shown hereon without permission from THE TECHNICAL MATERIEL CORPORATION to the user. This drawing is loaned for mutual assistance and is subject to recall at any time.

UNLESS OTHERWISE SPECIFIED DIMENSIONS ARE IN INCHES AND INCLUDE CHEMICALLY APPLIED OR PLATED FINISHES

TOLERANCES ON
 DECIMALS .X ± .05
 .XX ± .01
 .XXX ± .005
 FRACTIONS ± 1/64
 ANGLES ± 0° -30'

QTY. REQ.	ITEM	PART NO.	DESCRIPTION	SYMBOL
LIST OF MATERIAL				
THE TECHNICAL MATERIEL CORP. MAMARONECK, NEW YORK				
MARKING - PANEL, FRONT				
MATERIAL		SIZE CODE IDENT.NO DWG NO.		ISSUE
FINISH		C	82679 LD 228905-16	Ø
SCALE				SHEET 1 OF 2

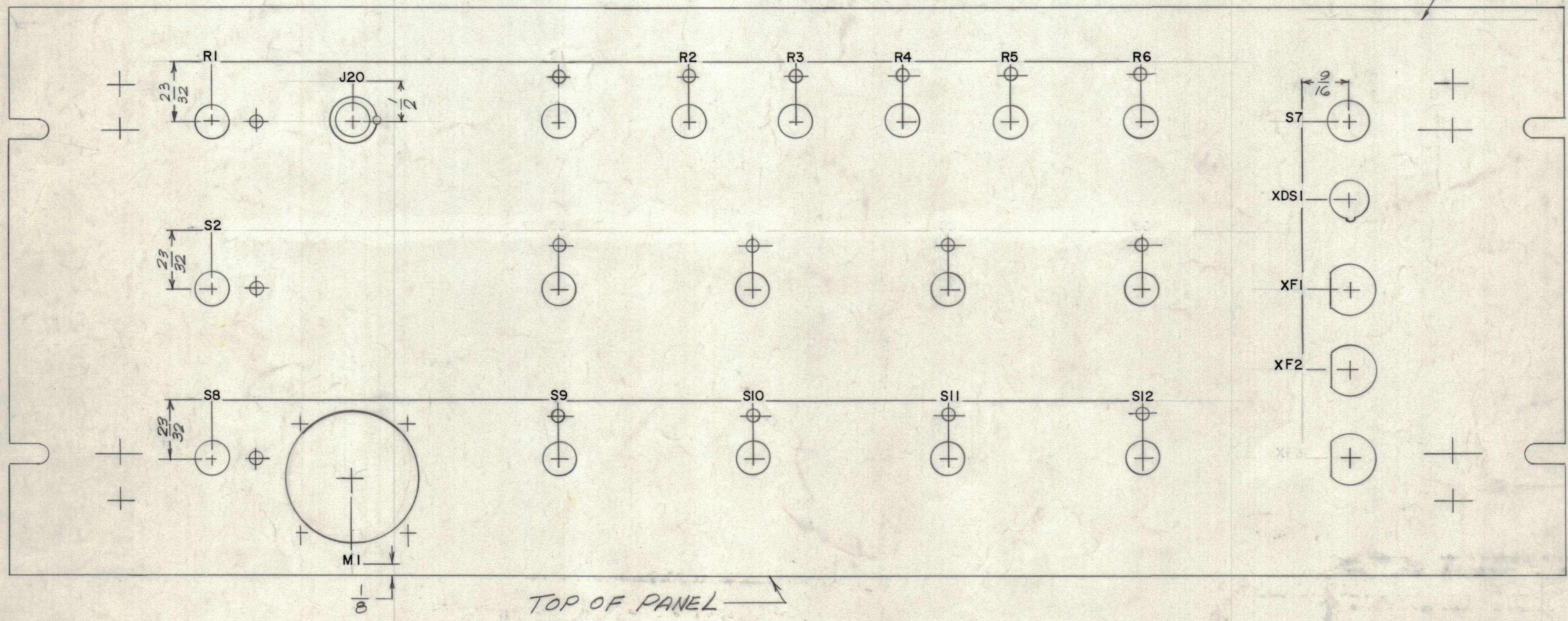
LD 2289

REVISIONS						
ZONE	LTR	DESCRIPTION	DATE	E.M.N.NO	DRAFT	CHKD APPD
	X	EXPERIMENTAL RELEASE	8-14-67		HL	RE
	X7	SEE SHT-1				
	X3	DELE. S1, S3 TO S6 & XF3	11/8/68		K.H.	HL
	Ø	ORIGINAL RELEASE FOR PRODUCTION	11/8/68		H.G.	HL

MARKING PROCESS: AS PER TMC SPECIFICATION S-727.
 LETTERING: 1/8 HIGH BLACK GOTHIC, LOCATED AS SHOWN.

INSIDE VIEW OF FRONT PANEL SHOWN

MARK TMC P/N
 1/8 HIGH GOTHIC
 W/LATEST REV.
 LETTER.



REF: MS 5327

QTY. REQ.	ITEM	PART NO.	DESCRIPTION	SYMBOL
	HOGAN LIST OF MATERIAL			
	FINAL APPROVAL		DATE	
	<i>[Signature]</i>		11.8.68	
	MECH. DES.		DATE	
	ELECT. DES.		DATE	
	CHECKED		DATE	
	CM RE		8/14/67	
	DRAWN		DATE	
	H. AUSTIN		8-14-67	
	MATERIAL			SIZE CODE IDENT. NO. DWG NO. ISSUE
	FINISH			C 82679 LD 2289-5-16 Ø
	SK 3252-005-16			SCALE 1:1 SHEET 2 OF 2

1	MSAB-4	
QTY / UNIT	MODEL USED ON	ASS'Y NO.
APPLICATION		
	CODE	
	A	
NOTICE TO PERSONS RECEIVING THIS DRAWING		
THE TECHNICAL MATERIEL CORPORATION claims proprietary right in the material disclosed hereon. This drawing is issued in confidence for engineering information only and may not be reproduced or used to manufacture anything shown hereon without permission from THE TECHNICAL MATERIEL CORPORATION to the user. This drawing is loaned for mutual assistance and is subject to recall at any time.		