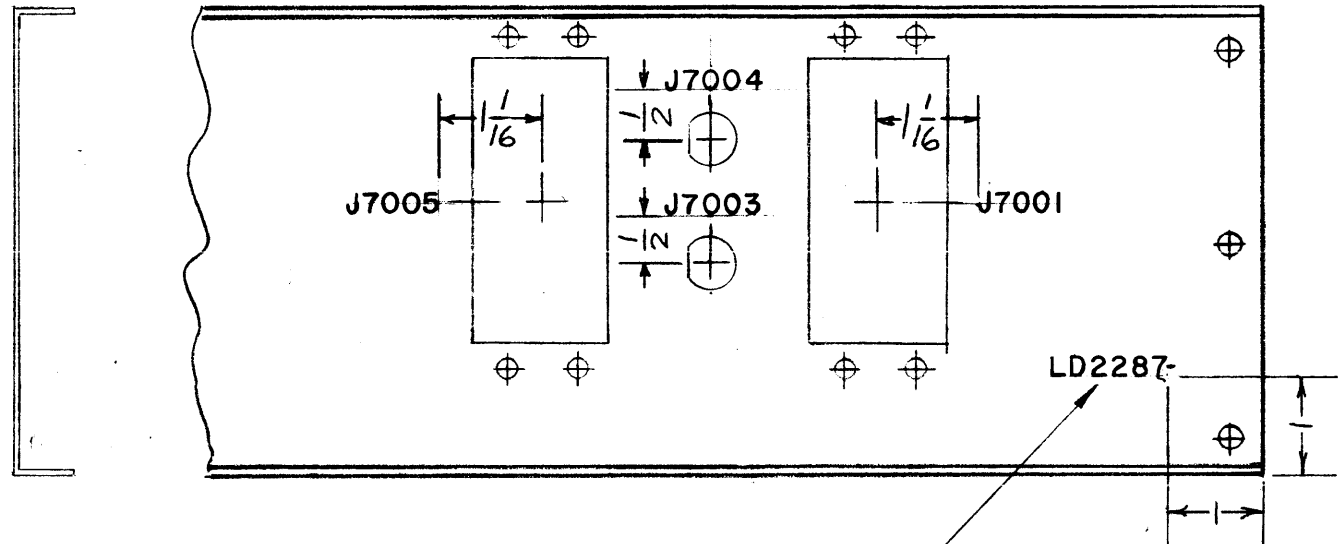
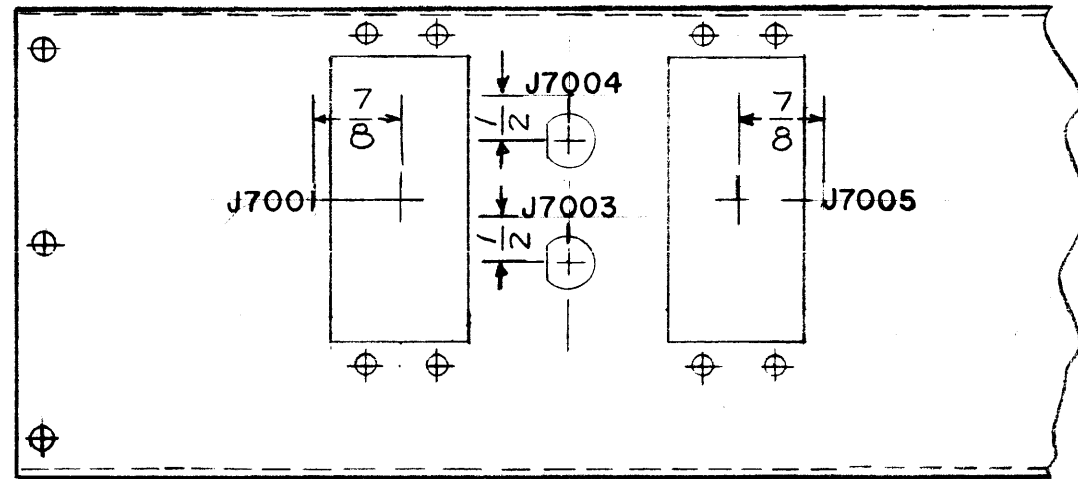


REVISIONS						
ZONE	LTR	DESCRIPTION	DATE	E.M.N.NO	DRAFT	CHKD APPD
	X	EXP. RELEASE	1.8.68		A.P.	<i>[Signature]</i> <i>[Signature]</i>
	∅	ORIGINAL RELEASE FOR PRODUCTION	5.7.68	∅	H.S.	<i>[Signature]</i>



MARK TMC P/N  $\frac{1}{8}$  HIGH GOTHIC  
W/LATEST REV. LETTER

MARKING PROCESS AS PER TMC SPECIFICATION S-727  
LETTERING:  $\frac{1}{8}$  HIGH BLACK GOTHIC, LOCATED AS SHOWN.

REF: MS5311

1	SWCD-3K	
QTY / UNIT	MODEL USED ON	ASS'Y NO.
APPLICATION		
	CODE A	5401-451

**NOTICE TO PERSONS RECEIVING THIS DRAWING**  
THE TECHNICAL MATERIEL CORPORATION claims proprietary right in the material disclosed hereon. This drawing is issued in confidence for engineering information only and may not be reproduced or used to manufacture anything shown hereon without permission from THE TECHNICAL MATERIEL CORPORATION to the user. This drawing is loaned for mutual assistance and is subject to recall at any time.

UNLESS OTHERWISE SPECIFIED  
DIMENSIONS ARE IN INCHES  
AND INCLUDE CHEMICALLY APPLIED  
OR PLATED FINISHES

DECIMALS	FRACTIONS
.X ± .05	1/64
.XX ± .01	TOLS. ANGLES
.XXX ± .005	0° -30'

MATERIAL

FINISH

REQ'D	ITEM	PART NUMBER	DESCRIPTION	SYM.
	BUDETTI		LIST OF MATERIAL	
FINAL APPROVAL		DATE	THE TECHNICAL MATERIEL CORP.	
<i>[Signature]</i>		1-8-68	MAMARONECK, NEW YORK	
MECH. DES.		DATE	MARKING, PLATE, REAR	
A. PETROCCA		5-7-68		
ELECT. DES.		DATE		
<i>[Signature]</i>		5-7-68		
CHECKED		DATE		
<i>[Signature]</i>		1-8-68		
DRAWN		DATE		
A. PETROCCA		1-8-68		
SIZE	CODE IDENT. NO.	DWG NO.	ISSUE	
B	82679	LD2287	∅	
SCALE			SHEET	OF