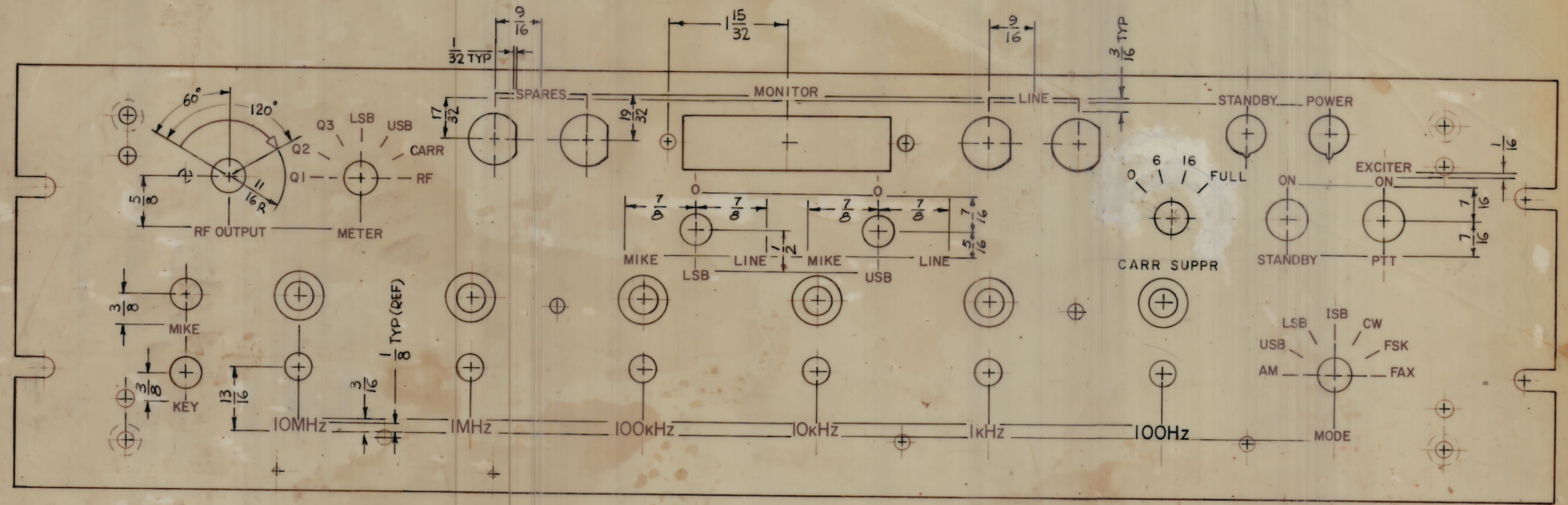
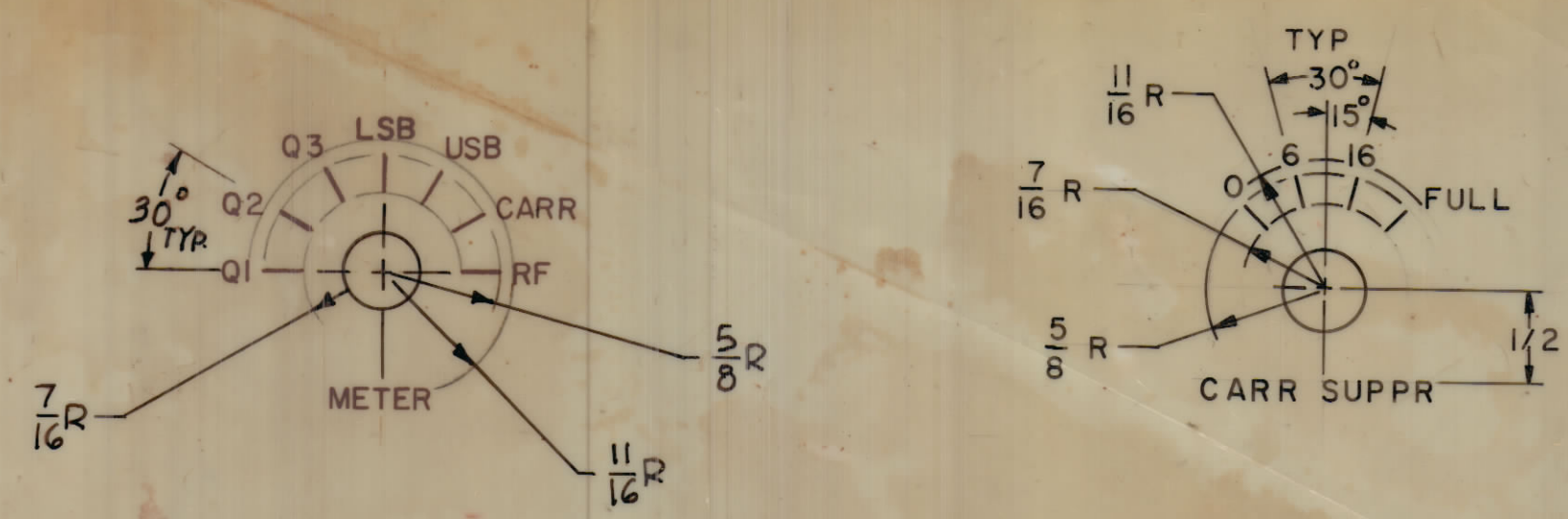


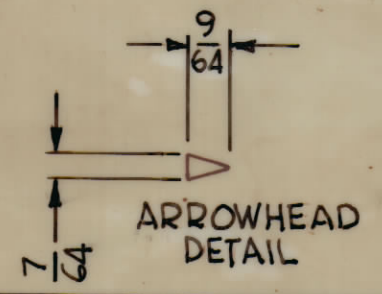
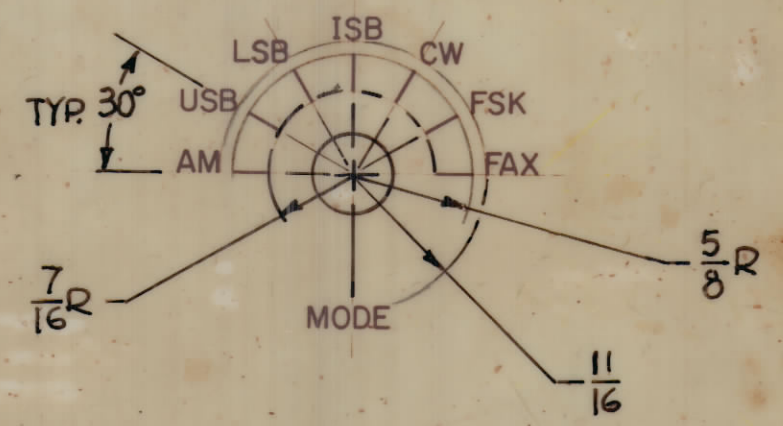
REVISIONS						
ZONE	SYM	DESCRIPTION	DATE	E.M.N. NO.	DRAFT	CHKD.
X		EXP. RELEASE	1-21-67			G.D.L.
X1		SEE SHEET 2 OF 2	4-24-65			G.D.L.
8		ORIGINAL RELEASE FOR PRODUCTION	6-24-67			RG
A		CHG. CARR SUPPR MARKINGS	6-7-71	20374		RZ
B		CHART ADDED FOR LETTERING FOR ALDC CONT.	7-18-71	21560		PH
C		BLACK FILL NOTE ADDED (NOTE 6)	9-6-78	21680		RU WB



FRONT OF PANEL SHOWN

APPLICATION

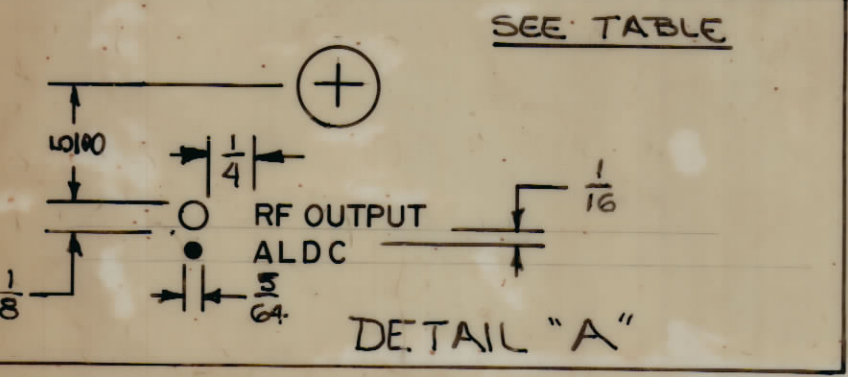
TMC PART No.	DETAIL "A"
LD 2213-1	N/A
LD 2213-2	1



ARROWHEAD
DETAIL

HEIGHT OF LETTER	DEPTH OF STROKE	WIDTH OF STROKE
1/8	.010	.020
3/16	.010	.025
LINES	.010	.015
ARROWHEADS	.010	SEE DETAIL

NOTE:
6- WHEN FINISH SPECIFICATIONS S1365 IS APPLIED TO THE FRONT PANEL. ALL ENGRAVING (LETTERS) (ARROWHEADS) & (LINES) ARE TO BE WHITE FILLED.



DETAIL "A"

- UNLESS OTHERWISE SPECIFIED:
- 1- ENGRAVING TO BE 1/8 HIGH GOTHIC, WHITE FILLED.
 - 2- ALL LINES TO BE WHITE FILLED.
 - 3- ALL ARROWHEADS TO BE WHITE FILLED.
 - 4- ALL LETTER GROUPS TO BE CENTERED ON HOLES, CUTOUTS OR INDICATING LINES.
 - 5- ALL ENGRAVING AS PER TMC SPEC. S566

REF MS6937
REF: MS 6081

REQ'D.	ITEM	PART NUMBER	DESCRIPTION	SYMBOL
POSE				
LIST OF MATERIAL				
THE TECHNICAL MATERIEL CORP. MAMARONECK, NEW YORK				
MARKING, FRONT PANEL				
DRAWN G.D.L.		DATE 1-31-67		FINAL APPROVAL
CHECKED		DATE 6-26-67		
ELECT. DES.		DATE		
MECH. DES.		DATE		
UNLESS OTHERWISE SPECIFIED DIMENSIONS ARE IN INCHES AND INCLUDE CHEMICALLY APPLIED OR PLATED FINISHES		LD2213		
DECIMALS: .X ± .05, .XX ± .01, .XXX ± .005		C		
FRACTIONS: ± 1/64, ANGLES: ± 0° 30'		SHEET 1 of 2		

1	MMX - ()	ASSY. NO.
QTY./UNIT	MODEL USED ON	
SCALE 1:1	CODE 3401-451	

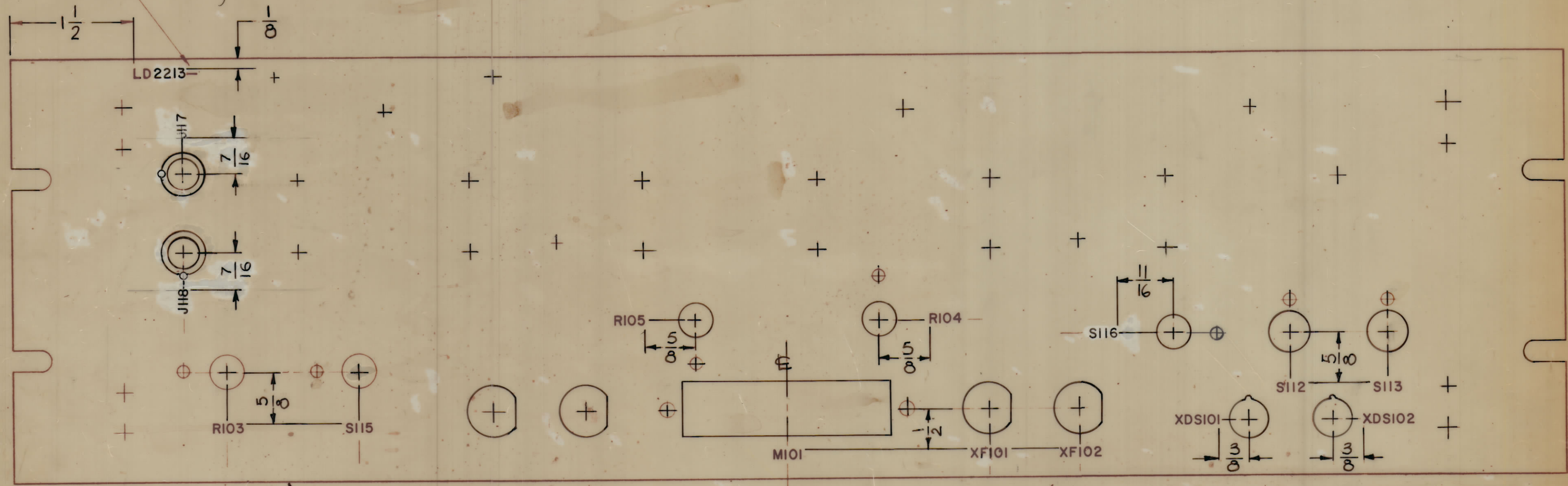
THE CONTENTS OF THIS DRAWING ARE THE EXCLUSIVE PROPERTY OF THE TECHNICAL MATERIEL CORP. ITS UNAUTHORIZED USE OR REPRODUCTION IN WHOLE OR IN PART IS STRICTLY FORBIDDEN.

NOTES

LD2213

REVISIONS						
ZONE	LTR	DESCRIPTION	DATE	E.M.N.NO	DRAFT	CHKD APPD
X		EXP. RELEASE	1-31-67		G.D.L.	AK
X1		DIM. 7/16 FOR J117 & J118 WAS 3/8	4-24-67		G.D.L.	AK
Ø		ORIGINAL RELEASE FOR PRODUCTION	6-26-67		RG	AK
A		CHG. R102 TO S116	6-7-71	20374	RZ	AK
B		SHEET 1; ADD DETAIL "A" & APPLICATION CHART.	7-18-71	21560	PH.	AK
C		ON SHEET (D) NOTE 6 Added	9-6-78	21680	PH	WB RU

MARK TMC PT/No.
 1/8 HIGH GOTHIC W/LATEST
 REVISION LETTER



TOP OF PANEL

REAR VIEW OF PANEL SHOWN

UNLESS OTHERWISE SPECIFIED

MARKING PROCESS: AS PER TMC SPECIFICATION 5727
 LETTERING: 1/8 HIGH BLACK GOTHIC, LOCATED AS SHOWN.

REF MS6937
 REF: MS6081

I	MMX- ()	
QTY / UNIT	MODEL USED ON	ASS'Y NO.
APPLICATION		
S401-451	CODE A	

NOTICE TO PERSONS RECEIVING THIS DRAWING
 THE TECHNICAL MATERIEL CORPORATION claims proprietary right in the material disclosed hereon. This drawing is issued in confidence for engineering information only and may not be reproduced or used to manufacture anything shown hereon without permission from THE TECHNICAL MATERIEL CORPORATION to the user. This drawing is loaned for mutual assistance and is subject to recall at any time.

UNLESS OTHERWISE SPECIFIED
 DIMENSIONS ARE IN INCHES
 AND INCLUDE CHEMICALLY APPLIED
 OR PLATED FINISHES

TOLERANCES ON	
DECIMALS	FRACTIONS
.X ± .05	± 1/64
.XX ± .01	ANGLES
.XXX ± .005	± 0° -30'

MATERIAL	
FINISH	

QTY. REQ.	ITEM	PART NO.	DESCRIPTION	SYMBOL
O. POSE LIST OF MATERIAL				
FINAL APPROVAL: <i>[Signature]</i> DATE: 6/26/67 MECH. DES: <i>[Signature]</i> DATE: 6/26/67 ELECT. DES: DATE: CHECKED: <i>[Signature]</i> DATE: 6-28-67 DRAWN: G.D.L. DATE: 1-31-67 MATERIAL: <i>[Signature]</i> 6/27/67				
THE TECHNICAL MATERIEL CORP. MAMARONECK, NEW YORK				
MARKING - PANEL, FRONT				
SIZE	CODE IDENT. NO.	DWG NO.	ISSUE	
C	82679	LD 2213	C	
SCALE 1:1			SHEET 2 OF 2	