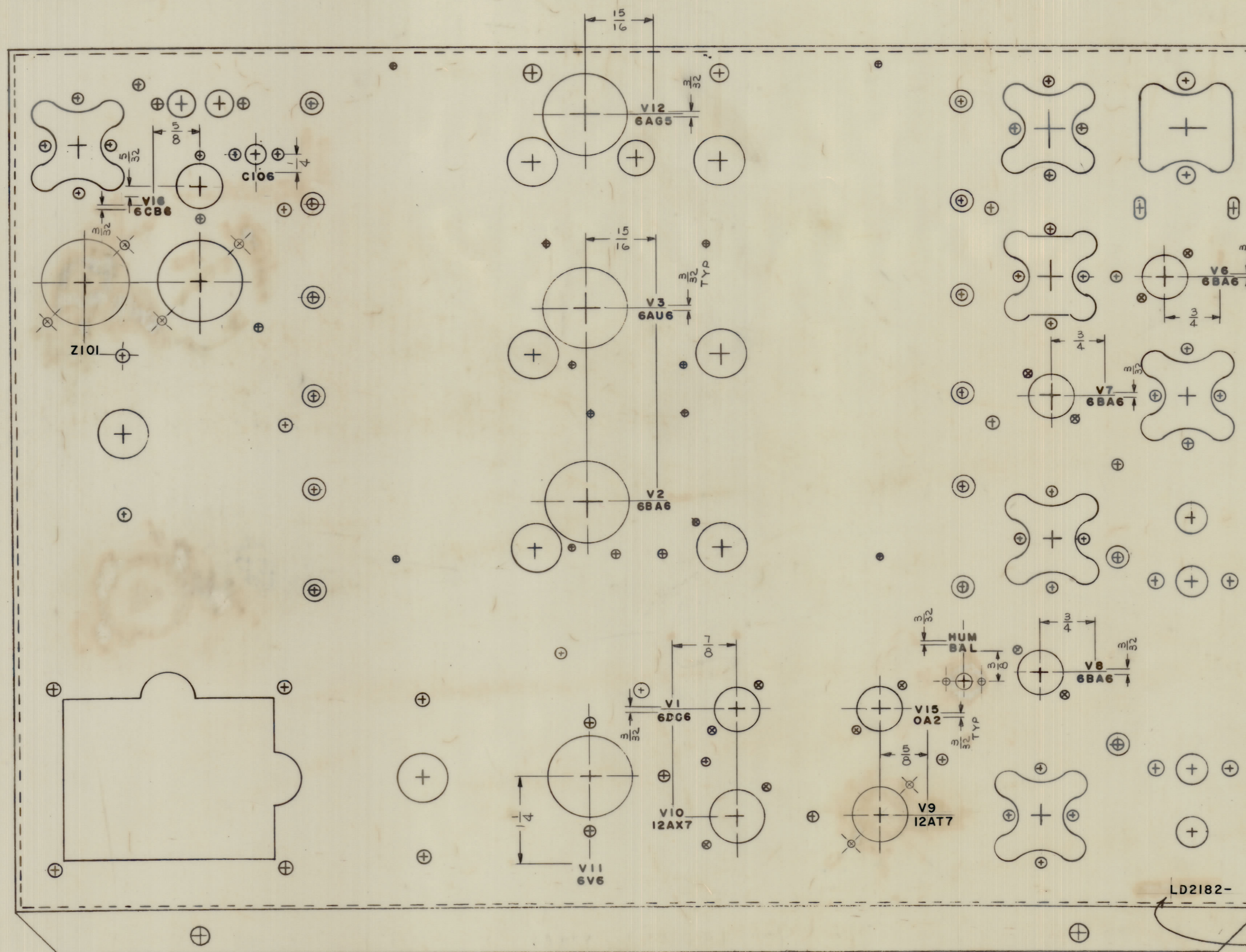


IF IT IS FOUND DESIRABLE TO CHANGE ANY TOLERANCE OR OTHER DETAIL SPECIFIED ON THIS DRAWING NOTIFY THE PURCHASER PROMPTLY.  
 MAXIMUM ALLOWABLE TOLERANCES HAVE BEEN DETERMINED AND DEVIATIONS WILL BE CAUSE FOR REJECTION. REMOVE ALL BURRS AND SHARP EDGES.

NOTICE TO PERSONS RECEIVING THIS DRAWING

THE TECHNICAL MATERIEL CORPORATION claims proprietary right in the material disclosed herein. This drawing is issued in confidence for engineering information only and may not be reproduced or used to manufacture any item shown hereon without permission from THE TECHNICAL MATERIEL CORPORATION to the user. This drawing is loaned for mutual assistance and is subject to recall at any time.

Property of:  
 THE TECHNICAL MATERIEL CORPORATION  
 MAMARONECK, NEW YORK

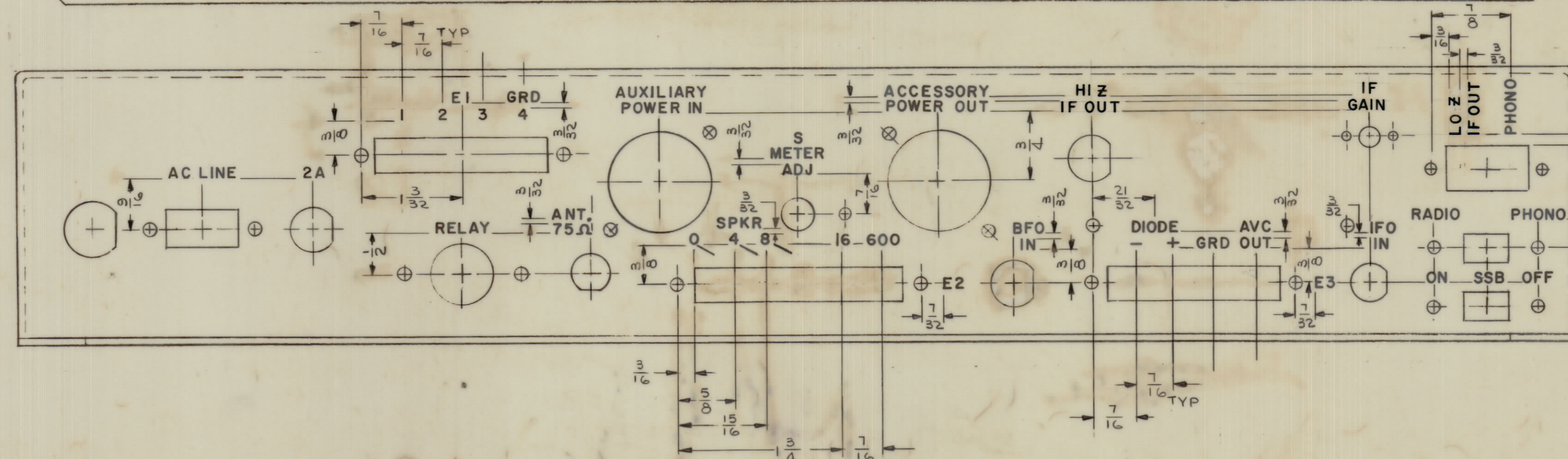


FRONT  
 TOP OF CHASSIS  
 REAR

- UNLESS OTHERWISE SPECIFIED -

LETTERING TO BE 1/8" HIGH GOTHIC, BLACK  
 LOCATED AS SHOWN  
 MARKING PROCESS: AS PER TMC SPECIFICATION S-727

MARK TMC PART NO.  
 1/8 HIGH GOTHIC  
 WITH LATEST REVISION  
 LETTER.



TOP  
 REAR OF CHASSIS  
 BOTTOM

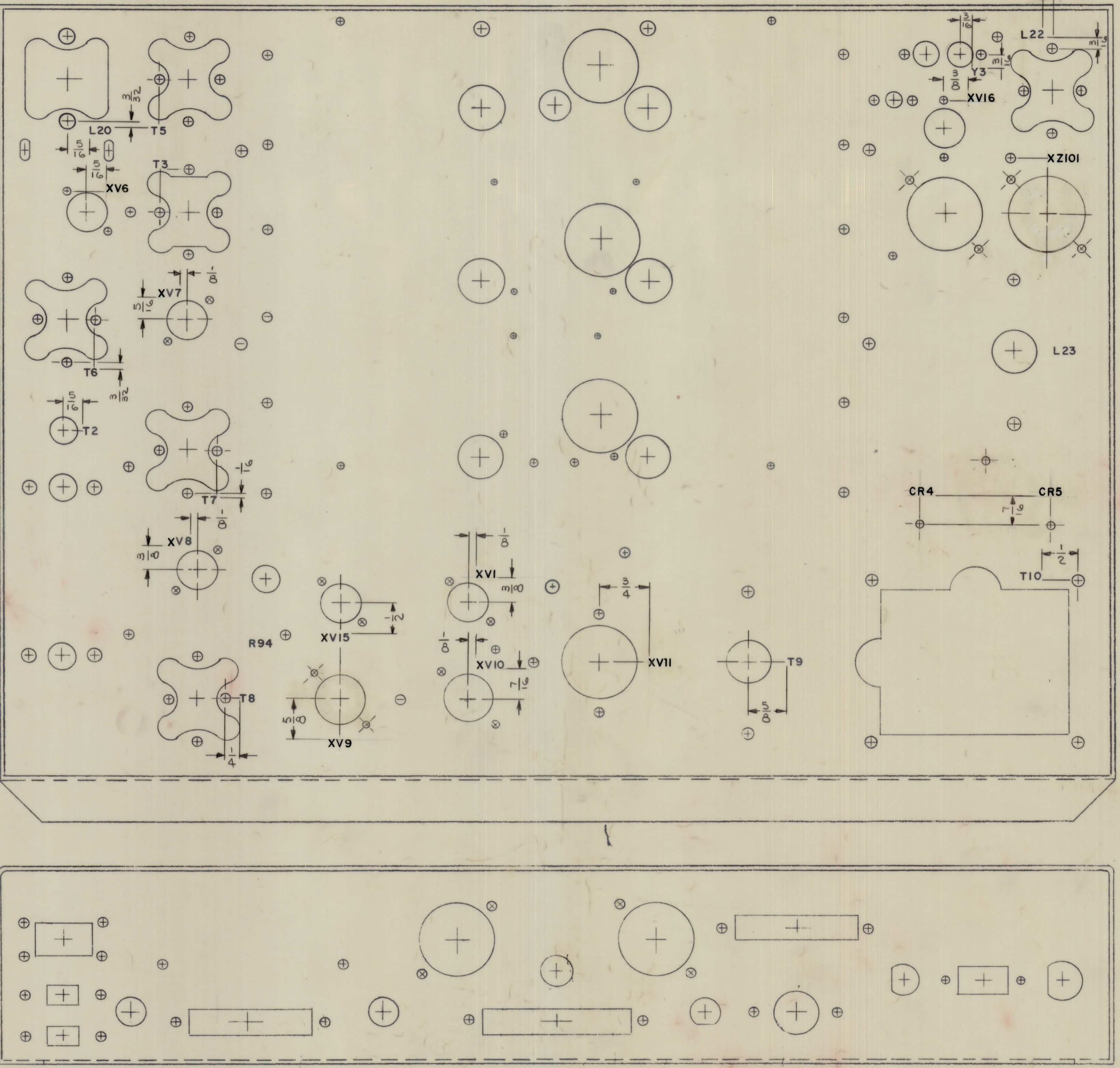
REF. MSG013

ORIGINAL RELEASE FOR PRODUCTION	11/16/64	RME	JL
EXP. RELEASE	12/2/64	JL	
DATE	CH NO.	DRAFTS	CHECKER (ENG APP)
TOLERANCES	SCALE		
DRILL PUNCH COMMERCIAL BOOK	SIZES 1/16 MANUFACTURERS		
TOLERANCES ARE NOT INCLUDED			

REQ PER UNIT	MODEL	PROJECT NO.	ASST. NO.	DATE
	GPR-90RIDS			
		USED ON		

REQ. ITEM	PART NO.	DESCRIPTION	SYMBOL
THE TECHNICAL MATERIEL CORP. MAMARONECK, NEW YORK			
MARKING - CHASSIS, ELEC-MAIN			
STOCK SIZE			
MATERIAL	WEIGHT PER PC		
TYPE & TEMPER	JL		
DRAWN	ELEC. DES. APP.	MCH. DES. APP.	
HEAT TREAT. SPEC.	CHECKED	FINAL APPROVAL	
FINISH & SPEC. NO.			

LD2182



FRONT  
BOTTOM OF CHASSIS  
REAR

- UNLESS OTHERWISE SPECIFIED -  
LETTERING TO BE 1/8 HIGH GOTHIC, BLACK  
MARKING PROCESS: AS PER T.M.C. SPECIFICATION S-727

TO PERSONS RECEIVING THIS DRAWING  
THE TECHNICAL MATERIEL CORPORATION claims  
proprietary right in the material disclosed herein.  
This drawing is issued in confidence for engineering  
information only and may not be reproduced or used  
in manufacture or being shown hereon without per-  
mission from THE TECHNICAL MATERIEL CORPORA-  
TION to the user. This drawing is loaned for mutual  
assistance and is subject to recall at any time.

Property of:  
THE TECHNICAL MATERIEL CORPORATION  
MAMARONECK, NEW YORK

LD2182

REF. MS 6013

REQ. ITEM	PART NO.	DESCRIPTION	SYMBOL
		<b>THE TECHNICAL MATERIEL CORP.</b> MAMARONECK, NEW YORK	
STOCK SIZE		MARKING - CHASSIS, ELEC - MAIN	
MATERIAL			
TYPE & TEMPER			
DRAWN		ELEC. DES. APP.	MECH. DES. APP.
CHECKED		FINAL APPROVAL	
FINISH & SPEC. NO.		LD2182	

REQ. PER UNIT	MODEL	SECTION	ABBY. NO.	DATE	USED ON
1	GPR-90RXDS				

ISSUE	ZONE	DESCRIPTION	DATE	CH. NO.	DRAFTS	CHECKER	ENG. APP.
Ø		ORIGINAL RELEASE FOR PRODUCTION	11/10/66	Ø	RME		
X		EXP. RELEASE	10/27/66		JL		