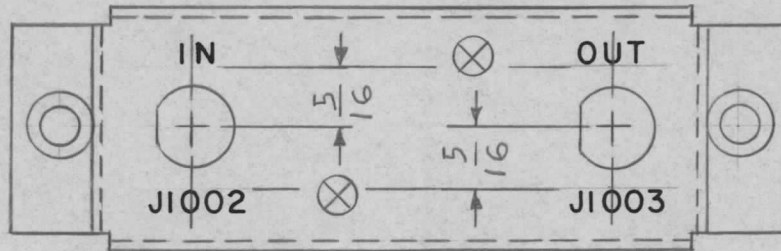


REQ. PER UNIT	USED ON			LD2148	Ø
	MODEL	ASS'Y. NO.	DATE		
1	AP125		8-22-66		



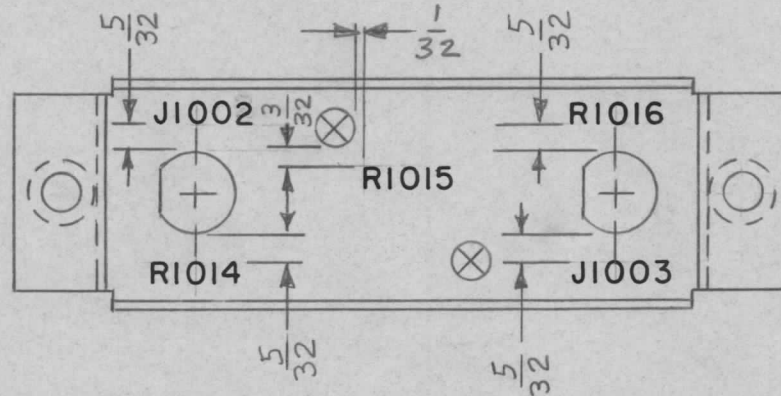
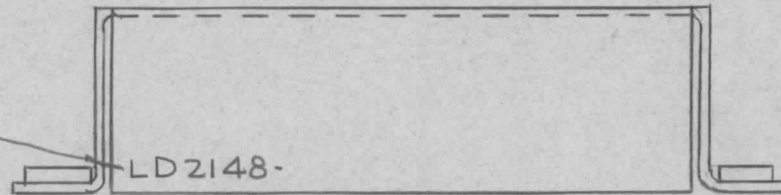
MARKING PROCESS:

AS PER TMC SPECIFICATION S-727.

LETTERING:

1/8 HIGH BLACK GOTHIC, LOCATED AS SHOWN.

MARK TMC P/N
1/8 HIGH GOTHIC
W/LATEST REV.
LETTER.



REF: MS-1927(1)

						REQ. ITEM	PART NO.	F-BUDETTI	DESCRIPTION	SYMBOL	
									THE TECHNICAL MATERIEL CORP. MAMARONECK, NEW YORK		
							STOCK SIZE		MARKING, ATTENUATOR.		
Ø	ORIGINAL RELEASE FOR PRODUCTION	8-22-66	X	JBC					CHASSIS		
SYM	DESCRIPTION	DATE	CH. NO.	DRAFTS	CHECKER	ENG. APP.	MATERIAL				
UNLESS OTHERWISE SPECIFIED DIMENSIONS ARE IN INCHES AND INCLUDE CHEMICALLY APPLIED OR PLATED FINISHES		SCALE						JBC 8-22-66	<i>JBC</i>	<i>[Signature]</i>	
DECIMALS .X ± .05 .XX ± .01 .XXX ± .005	TOLERANCES	FRACTIONS ± 1/64 ANGLES ± 0° 30'	CODE A				TYPE & TEMPER	HEAT TREAT. SPEC.	DRAWN	CHECKED	FINAL APPROVAL
									<i>[Signature]</i>		LD2148
							FINISH & SPEC. NO.	ELEC. DES. APP.	MECH. DES. APP.		Ø