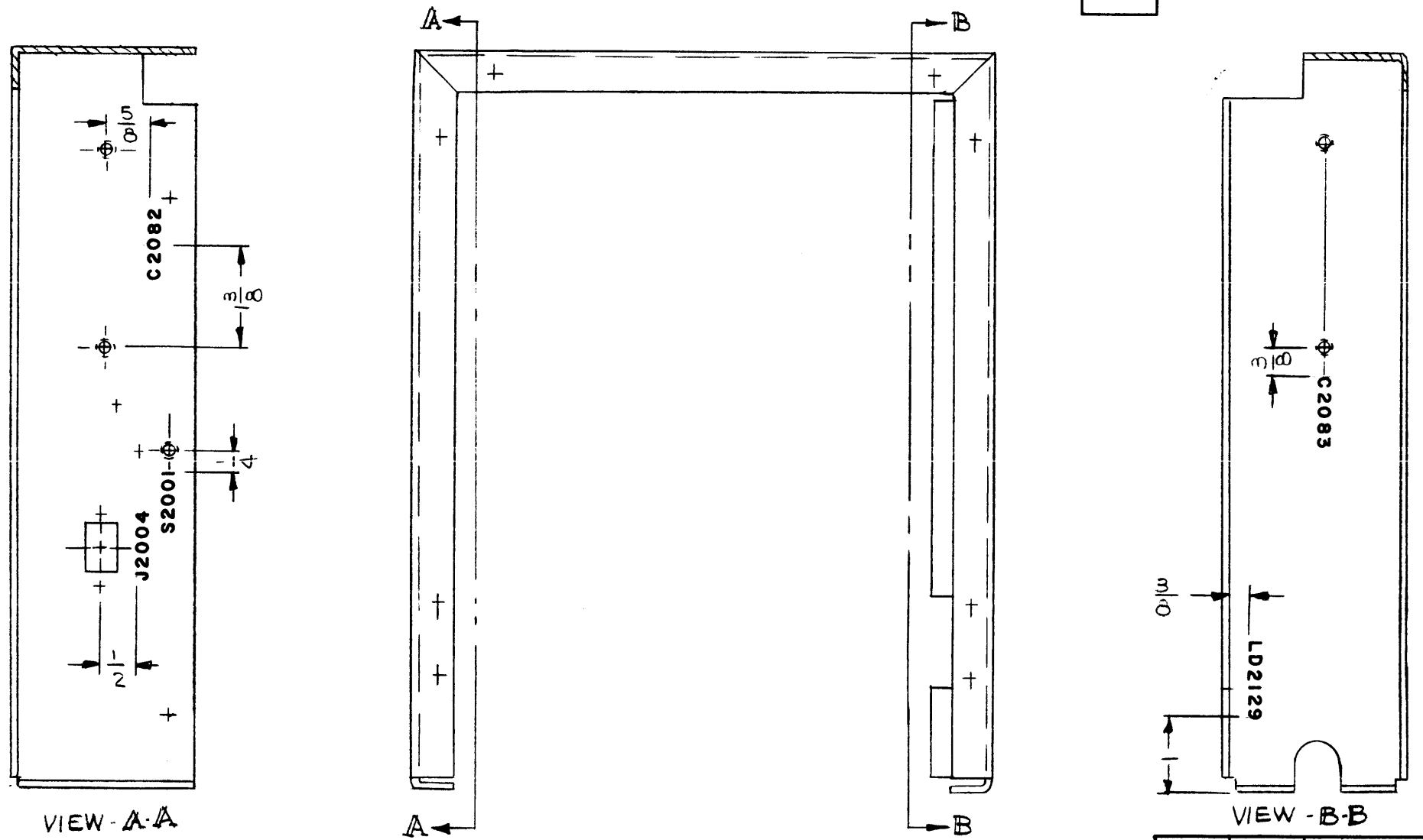


LD2129

REVISIONS						
SYM	DESCRIPTION	DATE	E.M.N. NO.	DRAFT	CHKD	APPD
X	EXP. RELEASE	8-3-66	X			
Ø	ORIGINAL RELEASE FOR PRODUCTION	11/16/66	Ø	RME		



REF: MS 4953-

- UNLESS OTHERWISE SPECIFIED -

MARKING PROCESS: AS PER TMC SPECIFICATION S-727.  
 LETTERING: 1/8 HIGH BLACK GOTHIC, LOCATED AS SHOWN.

**NOTES**

1	TLAA-2.5K	A5493
QTY./UNIT	MODEL USED ON	ASS'Y. NO.
SCALE 1:2	CODE A	
THE CONTENTS OF THIS DRAWING ARE THE EXCLUSIVE PROPERTY OF THE TECHNICAL MATERIEL CORP. ITS UNAUTHORIZED USE OR REPRODUCTION IN WHOLE OR IN PART IS STRICTLY FORBIDDEN.		

REQ'D.	ITEM	PART NUMBER	DESCRIPTION	SYMBOL
F. BUDETTI LIST OF MATERIAL				
MATERIAL			THE TECHNICAL MATERIEL CORP. MAMARONECK, NEW YORK	
FINISH			TITLE MARKING CHASSIS, MTG. CAP AS PER TMC SPEC. S727	
UNLESS OTHERWISE SPECIFIED DIMENSIONS ARE IN INCHES AND INCLUDE CHEMICALLY APPLIED OR PLATED FINISHES			DRAWN <i>[Signature]</i> DATE 8-3-66	FINAL APPROVAL <i>[Signature]</i> DATE
DECIMALS .X ± .05 .XX ± .01 .XXX ± .005			CHECKED <i>[Signature]</i> DATE	LD2129 Ø
FRACTIONS ± 1/64 ANGLES ± 0° 30'			ELECT. DES. <i>[Signature]</i> DATE 11/11/66	
TOLERANCES			MECH. DES. <i>[Signature]</i> DATE	
			M/L <i>[Signature]</i> 11-14-66	