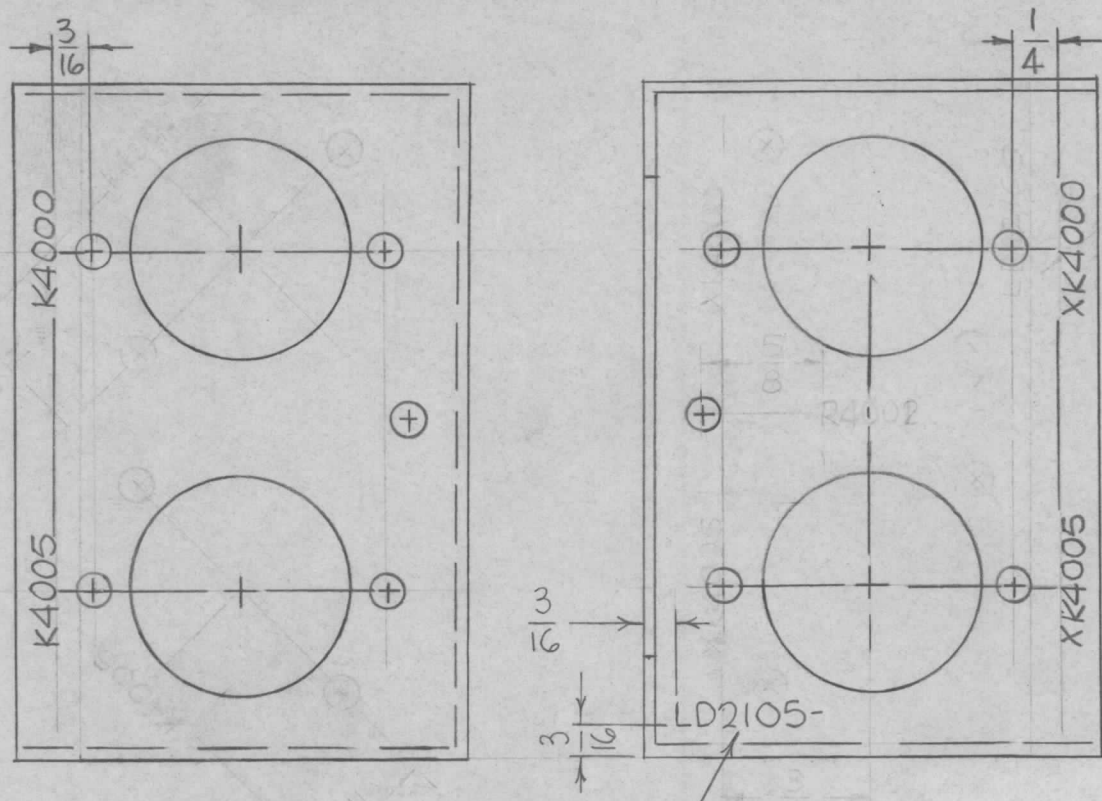


REQ. PER UNIT 1	USED ON		LD2105	⊙
	MODEL TCP-2	ASS'Y. NO.		

MARKING PROCESS: AS PER TMC SPECIFICATION S-727.

LETTERING: 1/8 HIGH BLACK GOTHIC, LOCATED AS SHOWN



MARK TMC PART NO. 1/8 HIGH GOTHIC W/LATEST REV LETTER

MARK TMC PART NO. 1/8 HIGH GOTHIC W/LATEST REVISION LETTER

⊙	ORIGINAL RELEASE FOR PRODUCTION	2.1.66	WHD			
X3	R4002 DELETED	11-29-66	X3	Ray		
X2	R4002 WAS R4001	9-1-66	X2	Ray		
X1	MARKING, RELOCATED	8-2-66	X1			
X	EXP. RELEASE	6-16-66	X			
SYM	DESCRIPTION	DATE	CH. NO.	DRAFTS	CHECKER	ENG. APP.
UNLESS OTHERWISE SPECIFIED DIMENSIONS ARE IN INCHES AND INCLUDE CHEMICALLY APPLIED OR PLATED FINISHES		SCALE	1:1			
DECIMALS .X ± .05 .XX ± .01 .XXX ± .005	TOLERANCES	FRACTIONS ± 1/64 ANGLES ± 0° 30'	CODE	A		

REF: MS4999-		REQ. ITEM	PART NO.	F. BUDETTI	DESCRIPTION	SYMBOL
				THE TECHNICAL MATERIEL CORP. MAMARONECK, NEW YORK		
STOCK SIZE				MARKING, BRACKET, MTG. RELAY AS PER TMC SPEC. S-727		
MATERIAL						
TYPE & TEMPER		HEAT TREAT. SPEC.	DRAWN	CHECKED	FINAL APPROVAL	
					LD2105 ⊙	
FINISH & SPEC. NO.				ELEC. DES. APP.	MECH. DES. APP.	