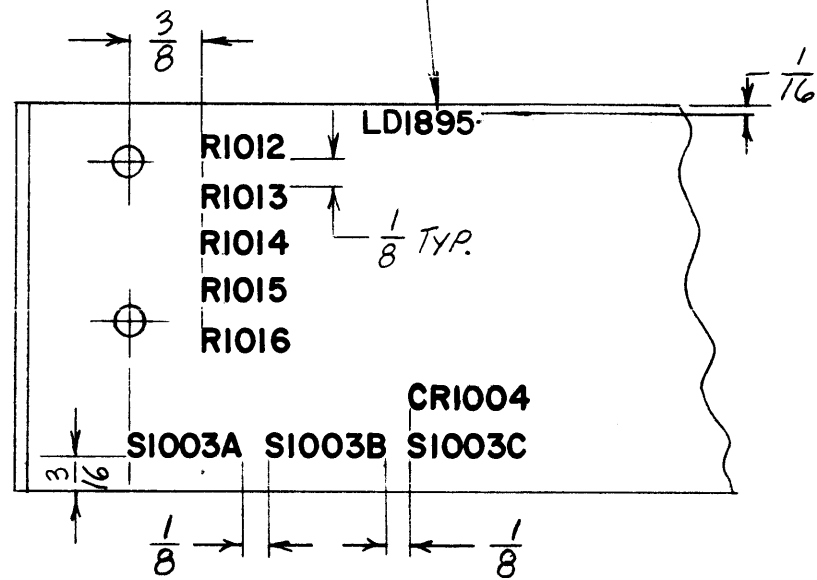


LD1895

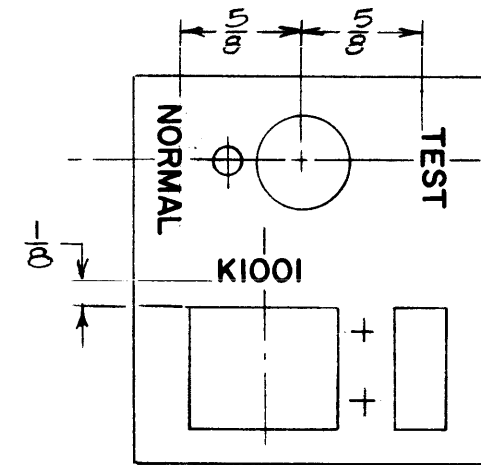
REVISIONS						
SYM	DESCRIPTION	DATE	E.M.N. NO.	DRAFT	CHKD	APPD
Ø	ORIGINAL RELEASE FOR PRODUCTION	7/27/66	Ø	CV		

MARKING PROCESS: AS PER TMC SPECIFICATION S-727.  
 LETTERING: 1/8 HIGH BLACK GOTHIC, LOCATED AS SHOWN.

MARK TMC PART NO. W/LATEST REV. LETTER, LOCATED AS SHOWN



VIEW A-A



VIEW B-B

REF.: MS4563

REQ'D.	ITEM	PART NUMBER	DESCRIPTION	SYMBOL
<b>ZETENA LIST OF MATERIAL</b>				
MATERIAL		<b>THE TECHNICAL MATERIEL CORP. MAMARONECK, NEW YORK</b>		
FINISH		TITLE <b>MARKING, BRACKET, MOUNTING AUTO. SWITCH</b>		
UNLESS OTHERWISE SPECIFIED DIMENSIONS ARE IN INCHES AND INCLUDE CHEMICALLY APPLIED OR PLATED FINISHES		DRAWN <b>H. AUSTIN</b>	DATE <b>5-6-65</b>	FINAL APPROVAL <i>[Signature]</i>
DECIMALS .X ± .05 .XX ± .01 .XXX ± .005		CHECKED <i>[Signature]</i>	DATE	DATE <b>7/27/66</b>
FRACTIONS ± 1/64 ANGLES ± 0° 30'		ELECT. DES.	DATE	DATE <b>LD1895</b>
TOLERANCES		MECH. DES. <i>[Signature]</i>	DATE <b>7-26-66</b>	DATE <b>Ø</b>
		SHEET		REV. LTR.

Q'TY./UNIT	MODEL USED ON	ASS'Y. NO.
SCALE <b>1:1</b>	CODE	
THE CONTENTS OF THIS DRAWING ARE THE EXCLUSIVE PROPERTY OF THE TECHNICAL MATERIEL CORP. ITS UNAUTHORIZED USE OR REPRODUCTION IN WHOLE OR IN PART IS STRICTLY FORBIDDEN.		

NOTES