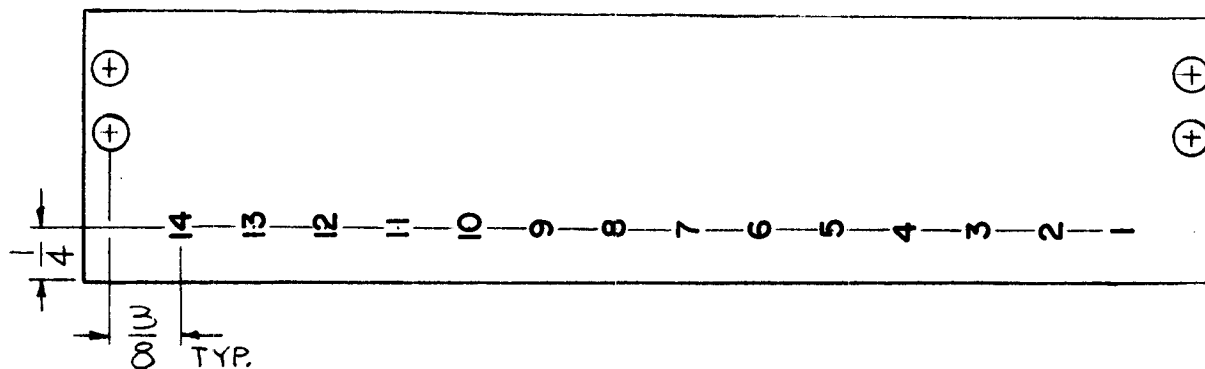


REQ. PER UNIT	USED ON			LD1883	Ø
	MODEL	ASS'Y. NO.	DATE		
1	TSTE-10K	AX580	4-26-65		

MARKING PROCESS: AS PER TMC SPECIFICATION S-727.

LETTERING: 1/8 HIGH BLACK GOTHIC, LOCATED AS SHOWN.



MARK TMC PART NO. LD1883- 1/8 HIGH GOTHIC W/LATEST REV. LETTER. (ON REAR)

REF: PX 935-

REQ.	ITEM	PART NO.	F. BUDETTI DESCRIPTION				SYMBOL
			THE TECHNICAL MATERIEL CORP. MAMARONECK. NEW YORK				
			MARKING, INSULATOR TERM. STRIP				
			MARKING PROCESS: AS PER TMC SPEC. S-727				
Ø			DATE	CH. NO.	DRAFTS	CHECKER	ENG. APP.
			4-29-66	Ø	WFO		JHE
SYM	DESCRIPTION		DATE	CH. NO.	DRAFTS	CHECKER	ENG. APP.
	UNLESS OTHERWISE SPECIFIED DIMENSIONS ARE IN INCHES AND INCLUDE CHEMICALLY APPLIED OR PLATED FINISHES		SCALE	1:1			
	TOLERANCES		CODE	A			
	DECIMALS .X ± .05 .XX ± .01 .XXX ± .005		FRACTIONS ± 1/64 ANGLES ± 0° 30'				
			TYPE & TEMPER	HEAT TREAT. SPEC.	DRAWN	CHECKED	FINAL APPROVAL
					SRG	JHE	M. M. M.
			FINISH & SPEC. NO.		ELEC. DES. APP.	MECH. DES. APP.	LD1883 Ø